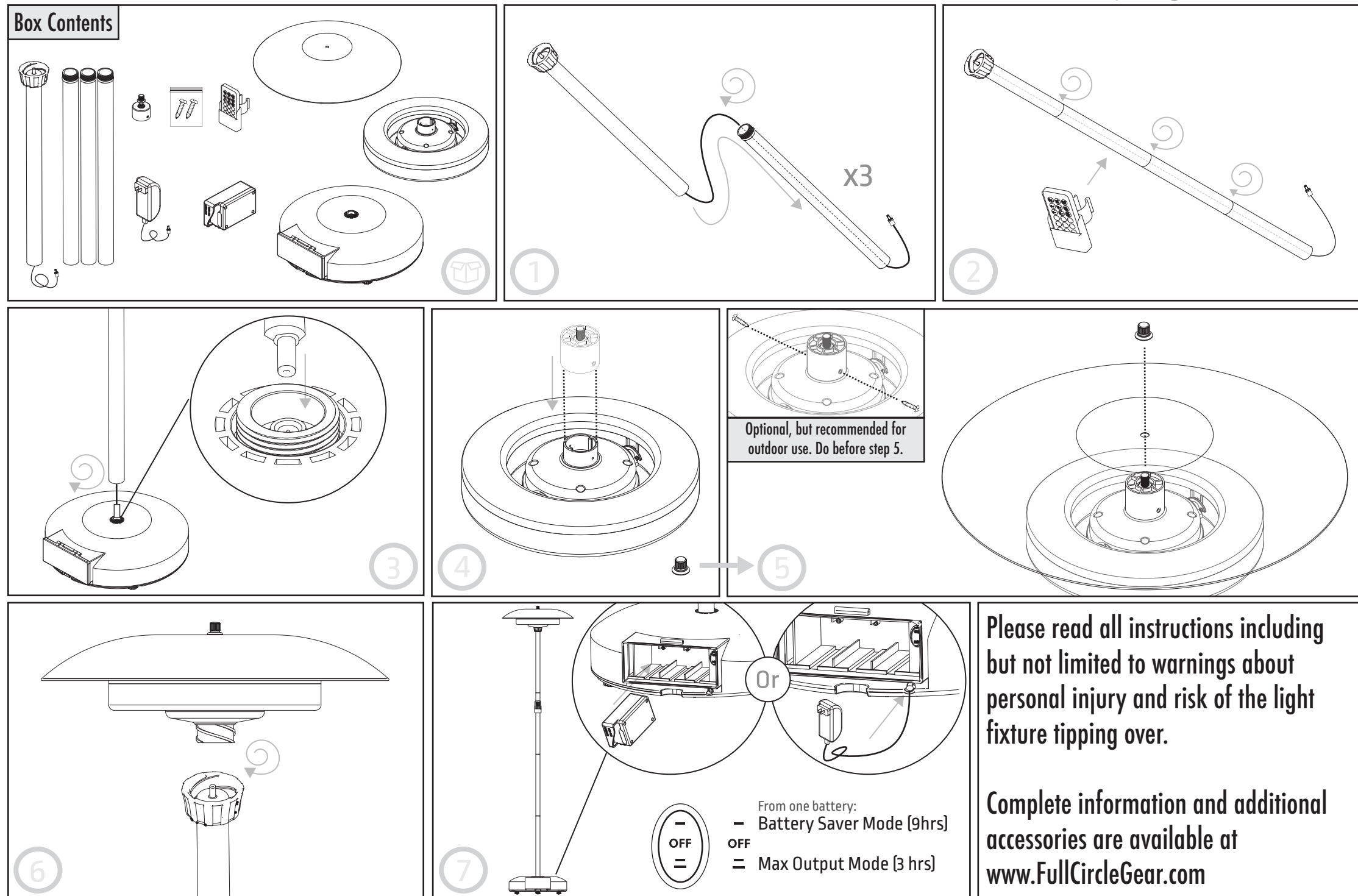


# Saturn Light®: Installation and Assembly Guide

for more information, please go to [FullCircleGear.com](http://FullCircleGear.com)

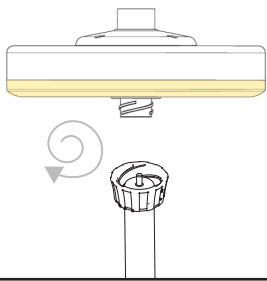


# Saturn Light®: How to use the Saturn Light

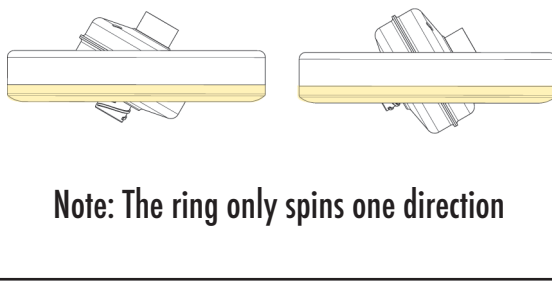
for more information, please go to [FullCircleGear.com](http://FullCircleGear.com)

## Change From Up to Down Light - Flip the Ring Around the Light

1. Remove from pole.

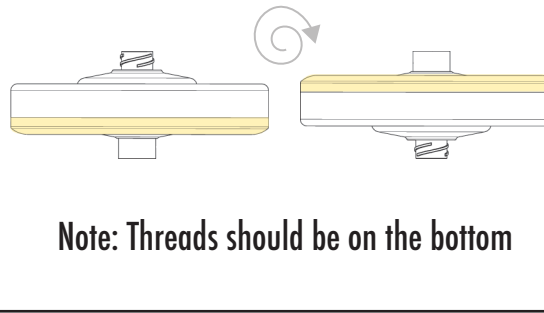


2. Rotate inner or outer ring.



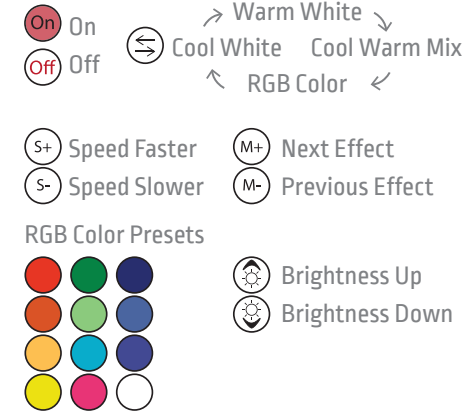
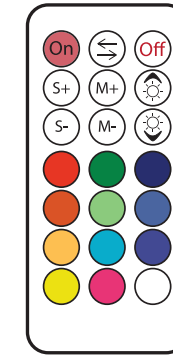
Note: The ring only spins one direction

2. Flip light completely around



Note: Threads should be on the bottom

## Remote Guide



## Connect to the App

Step 1: Download SmartPhone App  
"Magic Home Pro"



Step 2: Open wi-fi settings on the phone and connect to "LEDnetxxxxx" wi-fi.  
After successful connection, go back to the Magic Home Pro App. The Saturn Light® will be listed under "Devices"

## Connect Saturn Light to a wi-fi Network.

Step 3: Make sure Step 1 and 2 are done. Then open the App and click the "+" button in the upper right corner, then select "Connect device to wi-fi network".

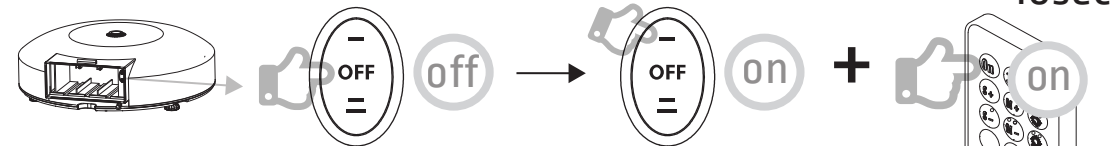
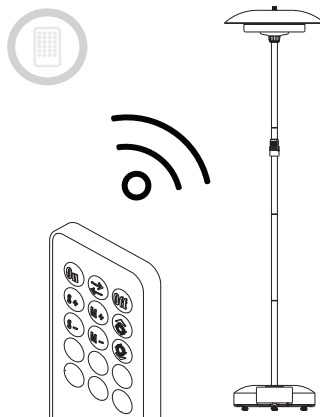
Step 4: Choose the wi-fi network you want the light to be on and enter the password if needed. The Light may change color as it connects to the network. You can also change the name of the Light now.

Step 5: The Light is now connected! Connect your phone to the same network as the light to see it in the App. Create a free Magic Home account for remote access and smart features.

For more information on the remote and app connectivity please go to [www.FullCircleGear.com](http://www.FullCircleGear.com)

Smart Assistant integration requires a free Magic Home Pro account to connect to online features like Smart Assistants and remote device access.

## Pair a new Remote



### FCC Statement

This device complies with part 15 of the FCC rules. Operation is subject to the following two conditions:

(1) this device may not cause harmful interference, and (2) this device must accept any interference received, including interference that may cause undesired operation.

Changes or modifications not expressly approved by the party responsible for compliance could void the user's authority to operate the equipment.

NOTE: This equipment has been tested and found to comply with the limits for a Class B digital device, pursuant to part 15 of the FCC Rules. These limits are designed to provide reasonable protection against harmful interference in a residential installation. This equipment generates uses and can radiate radio frequency energy and, if not installed and used in accordance with the instructions, may cause harmful interference to radio communications. However, there is no guarantee that interference will not occur in a particular installation. If this equipment does cause harmful interference to radio or television reception, which can be determined by turning the equipment off and on, the user is encouraged to try to correct the interference by one or more of the following measures:

- Reorient or relocate the receiving antenna.

- Reorient or relocate the receiving antenna.

- Reorient or relocate the receiving antenna.

- Consult the dealer or an experienced radio/TV technician for help important announcement Important

Note: Radiation Exposure Statement

This equipment complies with FCC radiation exposure limits set forth for an uncontrolled environment. This equipment should be installed and operated with minimum distance 20cm between the radiator and your body.

This transmitter must not be co-located or operating in conjunction with any other antenna or transmitter.