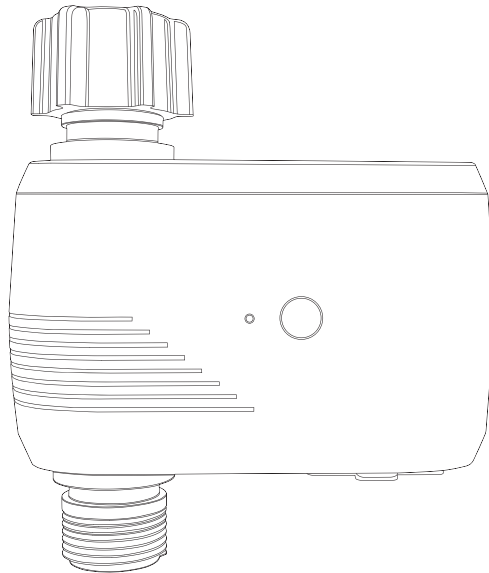
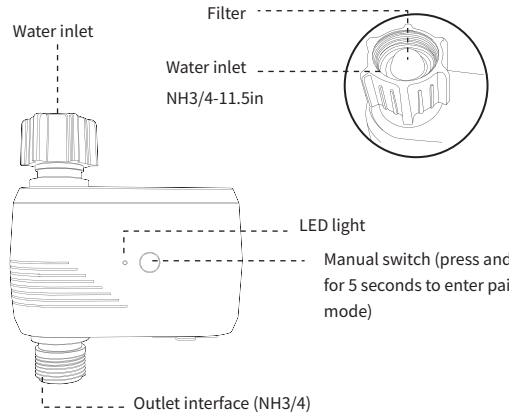


Smart Water Timer



Intelligent Water Valves Overview



Operating temperature range: 1°C~55°C
Operating pressure range: 0.02~0.8Mpa
Batteries : DC1.5V X4 AA batteries
protection level: IP55
Only for outdoor tapwater , not for drinking water.



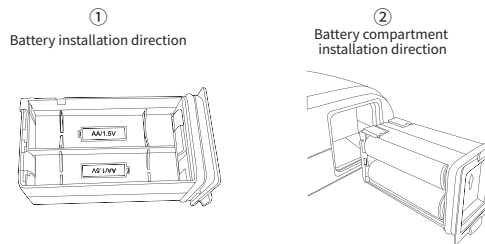
Input: DC5V
Protocol: IEEE 802.11b/g/n
Number of connectable water valves: 8
Operating temperature: -10°C~45°C

Wi-Fi Frequency: 2.4GHz
APP Program: Smart Life
Connector: TYPE-C

Initial Setup for Smart Water Valve

1. Please install AA batteries.

Please note that the batteries are not included when you receive the product. You will need four AA batteries to power your smart water valve. Do not mix alkaline batteries, standard batteries (carbon-zinc), or rechargeable batteries (nickel-cadmium). Used or depleted batteries must be removed from the smart water valve.



2. Initial Setup for the Smart Water Valve App

1. Download the Smart Life App

Please search for "Smart Life" in your phone's built-in app store to install the application.



Scan Code To Download

GET IT ON
Google Play

Download on the
App Store

3. Gateway Network Configuration

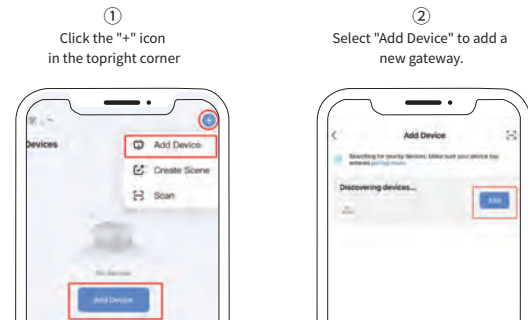
1. Gateway Requirements

The gateway is compatible with 2.4GHz Wi-Fi networks. If your current network is 5G, please switch to a 2.4GHz network. Each gateway can only be bound to one phone at a time. If you need to bind another phone, you will need to clear the network configuration by pressing and holding the gateway's power button for 5 seconds, waiting until the indicator light starts blinking, then Gateway can be bound again.

2. Gateway Power On

Please connect the gateway to a Type-C charging cable. When the gateway is powered on, the indicator light will blink blue, indicating that it is in an unconnected state and can be connected to the app for network configuration. If the gateway's indicator light is constantly on, it means that the network configuration already works.

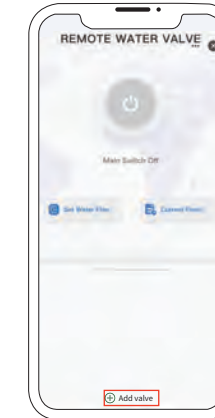
3. Opening the Application



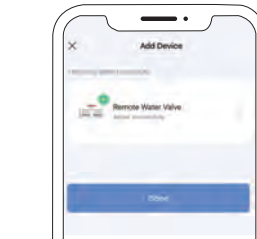
③ Connect to Your Home Wi-Fi
Compatible with 2.4GHz Only



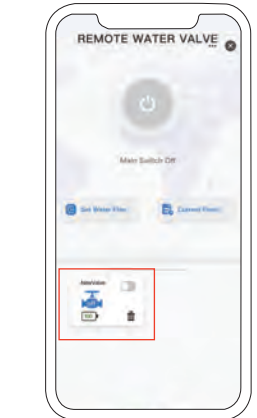
⑤ Press and hold button on valve for 5s until led blinks, then click "Add valve" to add valve



④ Once the device is successfully added, you will be prompted with a connection success message.



⑥ After successful addition, a valve icon will appear, indicating that the water valve has been successfully connected



⑦ Icon explanation



- master Water Valve Switch (Gray for Off, Blue for On)
- Set master Watering Plan
- Display master Watering Plan
- Water Valve Status Display (OFF indicates the water valve is closed, ON indicates the water valve is open. A black water valve icon means the water valve is offline.)
- Click to Edit Device Name
- Single water valve switch (grey off, blue on)
- Delete Water Valve - Click to confirm deletion of a paired water valve
- (The battery indicator displays the remaining battery)
- Add Water Valve

When the water valve icon is bright blue, clicking on it will enter the detailed information display area.



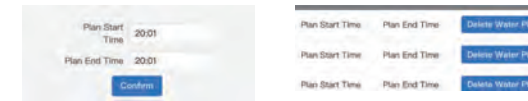
The detailed display area of the water valve includes the following information:

- ①Area displays the water valve name, battery level, and on/off status.
- ② Area displays the weather status.
- ③Area is for setting the irrigation plan
- ④Area is for manually switching the water valve on/off.
- ⑤Area displays the irrigation plan
- ⑥Area shows the last irrigation time
- ⑦Area shows the next irrigation time

4. Water Valve Irrigation Plan Settings

The irrigation plan refers to the automatic operation of the water valve at a specific time each day. If a master irrigation plan is set, all water valves will open when scheduled time arrived.

If an individual irrigation plan is set for a specific water valve, that water valve will also open when its own irrigation plan time is reached. The limitation of plans is 3.



5. Precautions

- Both the battery and the battery compartment have a specific installation direction. Please follow the instructions for installation.
- The device should not be used while submerged in water or in an environment with a temperature below 1°C.
- When the battery level is below 10%, please replace all batteries.
- If the water output decreases significantly, please clean the filter.
- When the water valve is offline, it may be due to bad network or low battery level. If the water valve still has power, you can click on the water valve switch to bring it back online. If the water always keep gray, please move it to new place closer to gateway, if still no response, please change the battery
- When setting the irrigation plan, the start time must be earlier than the end time.

Changes or modifications not expressly approved by the party responsible for compliance could void the user's authority to operate the equipment. This equipment has been tested and found to comply with the limits for a Class B digital device, pursuant to Part 15 of the FCC Rules. These limits are designed to provide reasonable protection against harmful interference in a residential installation. This equipment generates uses and can radiate radio frequency energy and, if not installed and used in accordance with the instructions, may cause harmful interference to radio communications. However, there is no guarantee that interference will not occur in a particular installation. If this equipment does cause harmful interference to radio or television reception, which can be determined by turning the equipment off and on, the user is encouraged to try to correct the interference by one or more of the following measures:

- Reorient or relocate the receiving antenna.
- Increase the separation between the equipment and receiver.
- Connect the equipment into an outlet on a circuit different from that to which the receiver is connected.
- Consult the dealer or an experienced radio/TV technician for help.

FCC Radiation Exposure Statement
The antennas used for this transmitter must be installed to provide a separation distance of at least 20 cm from all persons and must not be co-located for operating in conjunction with any other antenna or transmitter.

This device complies with Part 15 of the FCC Rules. Operation is subject to the following two conditions:

- (1) This device may not cause harmful interference, and
- (2) This device must accept any interference received, including interference that may cause undesired operation.

Warranty Plan

User Information:

User Name: :

User Address:

Seller Information:

Seller Name:

Seller Address: