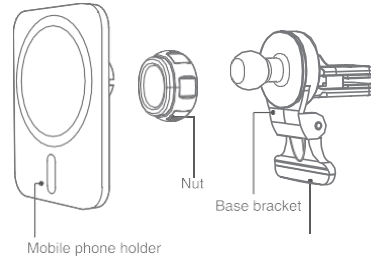


S I Z E:65\*90MM 材质：128克铜板纸,单面印刷



## Magnetic wireless charger

Please read the instructions before using the product



### Parameter specification

**Model:** CWXC530

**Input volage/current** DC5.0V/2.0A,9.0V/2.0A,12V/1.5A

**Output power:** 15W(Max)

**Charging frequency:** 110~205KHz

**Transmission Distance:** ≤5mm

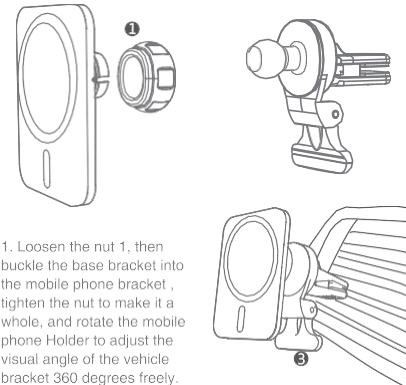
**Efficiency:** ≥75%

**Scope of application:** For iPhone 12 series

**Material:**( PC+ ABS )plastic

**Dimention;**L81.5"W61.5"D82mm

### Installation of air outlet bracket

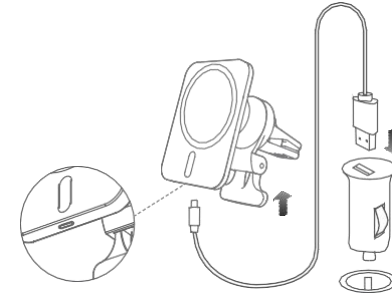


1. Loosen the nut 1, then buckle the base bracket into the mobile phone bracket , tighten the nut to make it a whole, and rotate the mobile phone Holder to adjust the visual angle of the vehicle bracket 360 degrees freely.

2. Push forward the clamp to lock of the base bracket, put the clip into the air outlet of the car and fasten it tightly with the blade.

3. The fixed bracket is used to support and stabilize the bracket, The anti-skid part of silica gel is close to the air outlet. Pay attention to the installation direction.

### Connect the power cord



① Connect one end of the USB-C interface of the USB cable to the magnetic wireless charging USB-C interface.

② Insert the USB cable USB-A into the USB socket of the car charger.

Remarks:

1. The magnetic suction function of the wireless charger only supports iPhone 12/12 mini/12 pro/12 pro Max Series.
2. The standard support 9V/12V car charger can support the fast charging function of this product, and the car charger needs to be purchased separately.

### Important notes

When the wireless charger is charging for the mobile device, if you run a power-consuming application on the mobile device or use the application on the device for a long time, the mobile device will heats up. This is a normal phenomeno and will not affect the service life or performance of the device.

- 1.This product only supports original Apple protective covers, can not guarantee to be compatible with third-party magnet accessories.
2. When the bracket is installed to the air outlet, the fixed bracket should be adjusted to the appropriate position, and the anti-skid silica gel should be used to fix the air outlet to prevent shaking.
3. Adjust the mobile phone bracket to the ideal angle before placing the mobile phone
4. The bracket does not support fan-shaped air outlet
5. The equipment can be used between 0°C - 35°C, and can be stored between -20°C and 50°C. If the device is used or stored outside the recommended temperature range, it may damage the device.
6. Pls prevent the children or animal chewing the equipment.
5. Do not disassemble, modify or repair the equipment.
6. Do not place magnetic stripe cards (including credit cards, phone cards, bank books and registration cards) near the charging device to avoid damage from the the magnetic field generated by the device.

•Recommend to use with Apple original phone case

### Warranty

There is one year guarantee for this product unless anthropogenic factor.

### Packing List

Magnetic wireless charger x1  
USB-C Cable x1  
User Manual x1

\* The involved images are sketch maps , the final product as per the material subjects

This device complies with Part 15 of the FCC Rules. Operation is subject to the following two conditions: (1) this device may not cause harmful interference, and (2) this device must accept any interference received, including interference that may cause undesired operation

NOTE: This equipment has been tested and found to comply with the limits for a Class B digital device, pursuant to Part 15 of the FCC Rules. These limits are designed to provide reasonable protection against harmful interference in a residential installation. This equipment generates, uses and can radiate radio frequency energy and, if not installed and used in accordance with the instructions, may cause harmful interference to radio communications. However, there is no guarantee that interference will not occur in a particular installation.

If this equipment does cause harmful interference to radio or television reception, which can be determined by turning the equipment off and on, the user is encouraged to try to correct the interference by one or more of the following measures:

- Reorient or relocate the receiving antenna.
- Increase the separation between the equipment and receiver.
- Connect the equipment into an outlet on a circuit different from that to which the receiver is connected.
- Consult the dealer or an experienced radio/TV technician for help.

FCC RF exposure statement:

The equipment complies with FCC radiation exposure limits set forth for an uncontrolled environment. During the operation of device a distance of 15 cm surrounding the device and 20 cm above the top surface of the device must be respected

Warning: changes or modifications not expressly approved by the party responsible for compliance could void the user's authority to operate the equipment