



Shenzhen CTL Testing Technology Co., Ltd.  
Tel: +86-755-89486194 E-mail: ctl@ctl-lab.com

# TEST REPORT

## FCC PART 15 SUBPART C

Report Reference No. .... : CTL2012071041-WF

Compiled by  
( position+printed name+signature) Happy Guo  
(File administrators)

Happy Guo

Supervised by  
( position+printed name+signature) Cary Gao  
(Test Engineer)

Cary Gao

Approved by  
( position+printed name+signature) Ivan Xie  
(Manager)

Ivan Xie

Applicant's name ..... : ZCOVER INC

Address of applicant..... : 100-13551 VERDUN PLACE RICHMOND, CANADA

Test Firm ..... : Shenzhen CTL Testing Technology Co., Ltd.

Address ..... : Floor 1-A, Baisha Technology Park, No.3011, Shahexi Road,  
Nanshan District, Shenzhen, China 518055

Test specification .....

Standard..... : FCC Part 15C

Master TRF ..... : Dated 2011-01

Test item description ..... : Wireless charger (transmitting)

FCC ID ..... : 2AYKS-ZDUWAUBK

Trade Mark..... : ZCOVER, ZOOL

Model/Type reference ..... : ZDUWAUBK

Transmit Frequency ..... : 115~205KHz

Antenna type ..... : Loop antenna

Date of receipt of test item ..... : Dec. 18, 2020

Date of sampling ..... : Dec. 18, 2020

Date of Test Date..... : Dec. 18, 2020–Dec. 31, 2020

Date of Issue..... : Jan. 06, 2021

Result ..... : Pass

Shenzhen CTL Testing Technology Co., Ltd. All rights reserved.

This publication may be reproduced in whole or in part for non-commercial purposes as long as the Shenzhen CTL Testing Technology Co., Ltd. is acknowledged as copyright owner and source of the material. Shenzhen CTL Testing Technology Co., Ltd. takes no responsibility for and will not assume liability for damages resulting from the reader's interpretation of the reproduced material due to its placement and context.

**TEST REPORT**

<b>Test Report No. :</b>	<b>CTL2012071041-WF</b>	Jan. 06, 2021
		Date of issue

Equipment under Test : Wireless charger (transmitting)

Sample No : CTL201207104-1-S001

Type / Model(s) : ZDUWAUBK

**Applicant** : **ZCOVER INC**

Address : 100-13551 VERDUN PLACE RICHMOND, CANADA

**Manufacturer** : **shen zhen buysent Information technology co., ltd.**

Address : Southeast of 4F, South Building 7, No.104 Baoli Road, Buji Street, Longgang District, Shenzhen, China

<b>Test result</b>	<b>Pass *</b>
--------------------	---------------

The test results presented in this report relate only to the object tested.

This report shall not be reproduced, except in full, without the written approval of the issuing testing laboratory.

## Contents

<b>1.</b>	<b><u>TEST STANDARDS .....</u></b>	<b><u>4</u></b>
<b>2.</b>	<b><u>SUMMARY .....</u></b>	<b><u>5</u></b>
2.1.	General Remarks	5
2.2.	Equipment Under Test	5
2.3.	Short description of the Equipment under Test (EUT)	5
2.4.	EUT configuration	5
2.5.	Related Submittal(s) / Grant (s)	6
2.6.	Modifications	6
2.7.	Summary of Test Results	6
<b>3.</b>	<b><u>TEST ENVIRONMENT .....</u></b>	<b><u>7</u></b>
3.1.	Address of the test laboratory	7
3.2.	Test Facility	7
3.3.	Environmental conditions	7
3.4.	Statement of the measurement uncertainty	8
3.5.	Equipments Used during the Test	8
<b>4.</b>	<b><u>TEST CONDITIONS AND RESULTS .....</u></b>	<b><u>9</u></b>
4.1.	AC Power Conducted Emission	9
4.2.	Radiated Emission	12
4.3.	20dB Bandwidth/99% Bandwidth	17
<b>5.</b>	<b><u>TEST SETUP PHOTOS OF THE EUT .....</u></b>	<b><u>18</u></b>
	<b><u>EXTERNAL AND INTERNAL PHOTOS OF THE EUT .....</u></b>	<b><u>19</u></b>

## **1. TEST STANDARDS**

The tests were performed according to following standards:

[FCC Rules Part 15.207,15.209, 15.215\(c\)](#)

[ANSI C63.10-2013](#)

## 2. SUMMARY

### 2.1. General Remarks

Date of receipt of test sample	:	Dec. 18, 2020
Testing commenced on	:	Dec. 18, 2020
Testing concluded on	:	Jan. 06, 2021

### 2.2. Equipment Under Test

#### Power supply system utilised

Power supply voltage	:	●	120V / 60 Hz	○	115V / 60Hz
		○	12 V DC	○	24 V DC
		●	Other (specified in blank below)		

DC5V

### 2.3. Short description of the Equipment under Test (EUT)

Clock wireless charger work frequency range 115-205 KHz.

For more details, refer to the user's manual of the EUT.

Serial number: ZDUWAUBK

EUT operation mode

The EUT has been tested under typical operating condition. The Applicant provides communication tools software to control the EUT for staying in continuous transmitting mode for testing.

<b>Test Mode :</b>	5W
--------------------	----

### 2.4. EUT configuration

**The following peripheral devices and interface cables were connected during the measurement:**

- - supplied by the manufacturer
- - supplied by the lab

●	Mobile phone	Manufacturer :	CISCO
		Model No. :	CP-8821
●	PC	Manufacturer :	DELL
		Model No. :	Vostro14-3468

## 2.5. Related Submittal(s) / Grant (s)

This submittal(s) (test report) is intended for FCC ID:2AYKS-ZDUWAUBK filing to comply with FCC Part 15, Subpart C Rules.

## 2.6. Modifications

No modifications were implemented to meet testing criteria.

## 2.7. Summary of Test Results

The EUT is night light with wireless charger, The test summary of the EUT listed as below:

	Test Standards	Test Result
Electric Field Radiated Emissions	FCC Part 15 C (Section15.209)	PASS
20dB Bandwidth/99% Bandwidth	FCC Part 15 C (Section15.215(c))	PASS
Conducted Emissions	FCC Part 15 C (Section15.207)	PASS

Remark: The measurement uncertainty is not included in the test result.

### **3. TEST ENVIRONMENT**

#### **3.1. Address of the test laboratory**

Shenzhen CTL Testing Technology Co., Ltd.

Floor 1-A, Baisha Technology Park, No. 3011, Shahexi Road, Nanshan, Shenzhen 518055 China

There is one 3m semi-anechoic chamber and two line conducted labs for final test. The Test Sites meet the requirements in documents ANSI C63.4 and CISPR 32/EN 55032 requirements.

#### **3.2. Test Facility**

The test facility is recognized, certified, or accredited by the following organizations:

##### **CNAS-Lab Code: L7497**

Shenzhen CTL Testing Technology Co., Ltd. has been assessed and proved to be in compliance with CNAS-CL01 Accreditation Criteria for Testing and Calibration Laboratories (identical to ISO/IEC 17025: 2005 General Requirements) for the Competence of Testing and Calibration Laboratories.

##### **A2LA-Lab Cert. No. 4343.01**

Shenzhen CTL Testing Technology Co., Ltd, EMC Laboratory has been accredited by A2LA for technical competence in the field of electrical testing, and proved to be in compliance with ISO/IEC 17025: 2005 General Requirements for the Competence of Testing and Calibration Laboratories and any additional program requirements in the identified field of testing.

##### **IC Registration No.: 9618B**

##### **CAB identifier: CN0041**

The 3m alternate test site of Shenzhen CTL Testing Technology Co., Ltd. EMC Laboratory has been registered by Innovation, Science and Economic Development Canada to test to Canadian radio equipment requirements with Registration No.: 9618B on Jan. 22, 2019.

##### **FCC-Registration No.: 399832**

##### **Designation No.: CN1216**

Shenzhen CTL Testing Technology Co., Ltd. EMC Laboratory has been registered and fully described in a report filed with the (FCC) Federal Communications Commission. The acceptance letter from the FCC is maintained in our files. Registration 399832, December 08, 2017.

#### **3.3. Environmental conditions**

During the measurement the environmental conditions were within the listed ranges:

Temperature:	<u>15-35 ° C</u>
Humidity:	<u>30-60 %</u>
Atmospheric pressure:	<u>950-1050mbar</u>

### 3.4. Statement of the measurement uncertainty

The data and results referenced in this document are true and accurate. The reader is cautioned that there may be errors within the calibration limits of the equipment and facilities. The measurement uncertainty was calculated for all measurements listed in this test report acc. to CISPR 16 - 4 „Specification for radio disturbance and immunity measuring apparatus and methods – Part 4: Uncertainty in EMC Measurements“ and is documented in the Shenzhen CTL Testing Technology Co., Ltd. quality system acc. to DIN EN ISO/IEC 17025. Furthermore, component and process variability of devices similar to that tested may result in additional deviation. The manufacturer has the sole responsibility of continued compliance of the device.

Hereafter the best measurement capability for CTL laboratory is reported:

Test	Range	Measurement Uncertainty	Notes
Radiated Emission	30~1000MHz	4.10dB	(1)
Radiated Emission	Above 1GHz	4.32dB	(1)
Conducted Disturbance	0.15~30MHz	3.20dB	(1)

- (1) This uncertainty represents an expanded uncertainty expressed at approximately the 95% confidence level using a coverage factor of k=2.

### 3.5. Equipments Used during the Test

Test Equipment	Manufacturer	Model No.	Serial No.	Calibration Date	Calibration Due Date
LISN	R&S	ESH2-Z5	860014/010	2020/05/20	2021/05/19
LISN	R&S	ENV216	3560.6550.12	2020/05/20	2021/05/19
Double cone logarithmic antenna	Schwarzbeck	VULB 9168	824	2020/05/20	2021/05/19
EMI Test Receiver	R&S	ESCI	1166.5950.03	2020/05/20	2021/05/19
Spectrum Analyzer	Agilent	N9020A	US46220290	2020/05/20	2021/05/19
Spectrum Analyzer	Keysight	N9020A	MY53420874	2020/05/20	2021/05/19
Controller	EM Electronics	EM 1000	060859	2020/05/20	2021/05/19
Horn Antenna	Sunol Sciences Corp.	DRH-118	A062013	2020/05/20	2021/05/19
Active Loop Antenna	Da Ze	ZN30900A	/	2020/05/20	2021/05/19
Amplifier	Agilent	8449B	3008A02306	2020/05/20	2021/05/19
Amplifier	Agilent	8447D	2944A10176	2020/05/20	2021/05/19
Temperature/Humidity Meter	Gangxing	CTH-608	02	2020/05/20	2021/05/19
Spectrum Analyzer	RS	FSP	1164.4391.38	2020/05/20	2021/05/19

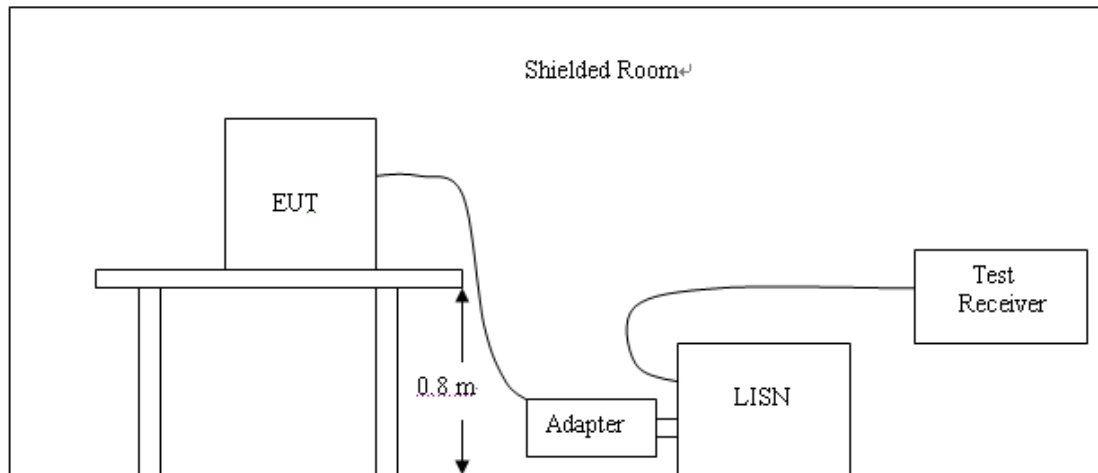
The calibration interval was one year



## 4. TEST CONDITIONS AND RESULTS

### 4.1. AC Power Conducted Emission

#### TEST CONFIGURATION



#### TEST PROCEDURE

- 1 The equipment was set up as per the test configuration to simulate typical actual usage per the user's manual. The EUT is a tabletop system, a wooden table with a height of 0.8 meters is used and is placed on the ground plane as per ANSI C63.10-2013.
- 2 Support equipment, if needed, was placed as per ANSI C63.10-2013
- 3 All I/O cables were positioned to simulate typical actual usage as per ANSI C63.10-2013
- 4 The EUT received DC5V power from the adapter, the adapter received AC120V/60Hz power through a Line Impedance Stabilization Network (LISN) which supplied power source and was grounded to the ground plane.
- 5 All support equipments received AC power from a second LISN, if any.
- 6 The EUT test program was started. Emissions were measured on each current carrying line of the EUT using a spectrum Analyzer / Receiver connected to the LISN powering the EUT. The LISN has two monitoring points: Line 1 (Hot Side) and Line 2 (Neutral Side). Two scans were taken: one with Line 1 connected to Analyzer / Receiver and Line 2 connected to a 50 ohm load; the second scan had Line 1 connected to a 50 ohm load and Line 2 connected to the Analyzer / Receiver.
- 7 Analyzer / Receiver scanned from 150 KHz to 30MHz for emissions in each of the test modes.
- 8 During the above scans, the emissions were maximized by cable manipulation.  
Conducted emissions were investigated over the frequency range from 0.15MHz to 30MHz using a receiver bandwidth of 9kHz.

#### AC Power Conducted Emission Limit

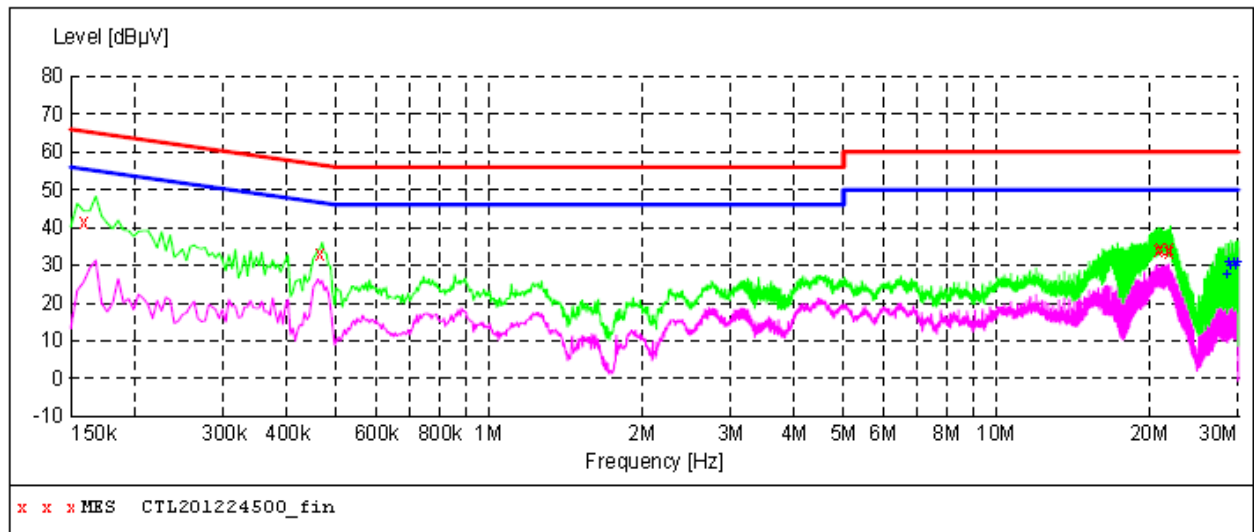
For intentional device, according to § 15.207(a) AC Power Conducted Emission Limits is as following :

Frequency (MHz)	Maximum RF Line Voltage (dBμV)			
	CLASS A		CLASS B	
	Q.P.	Ave.	Q.P.	Ave.
0.15 - 0.50	79	66	66-56*	56-46*
0.50 - 5.00	73	60	56	46
5.00 - 30.0	73	60	60	50

\* Decreasing linearly with the logarithm of the frequency

**TEST RESULTS****SCAN TABLE: "Voltage (9K-30M) FIN"**

Short Description: 150K-30M Voltage

**MEASUREMENT RESULT: "CTL201224500\_fin"**

12/24/2020 10:49AM

Frequency MHz	Level dBμV	Transd dB	Limit dBμV	Margin dB	Detector	Line	PE
0.159000	41.30	11.2	66	24.2	QP	L1	GND
0.465000	33.00	11.2	57	23.6	QP	L1	GND
20.931000	33.90	11.3	60	26.1	QP	L1	GND
21.138000	34.30	11.3	60	25.7	QP	L1	GND
21.889500	34.40	11.3	60	25.6	QP	L1	GND
22.015500	33.50	11.3	60	26.5	QP	L1	GND

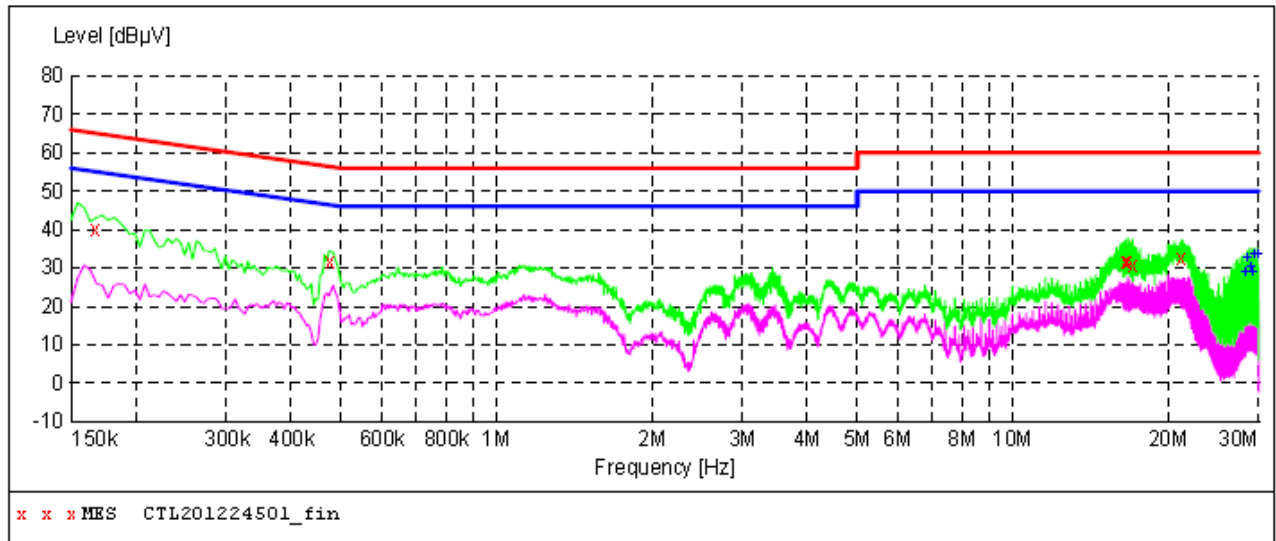
**MEASUREMENT RESULT: "CTL201224500\_fin2"**

12/24/2020 10:49AM

Frequency MHz	Level dBμV	Transd dB	Limit dBμV	Margin dB	Detector	Line	PE
28.329000	27.50	11.4	50	22.5	AV	L1	GND
28.648500	30.90	11.4	50	19.1	AV	L1	GND
28.968000	29.90	11.4	50	20.1	AV	L1	GND
29.292000	30.80	11.5	50	19.2	AV	L1	GND
29.616000	29.90	11.5	50	20.1	AV	L1	GND
29.935500	30.80	11.5	50	19.2	AV	L1	GND

**SCAN TABLE: "Voltage (9K-30M)FIN"**

Short Description: 150K-30M Voltage

**MEASUREMENT RESULT: "CTL201224501\_fin"**

12/24/2020 10:52AM

Frequency MHz	Level dBuV	Transd dB	Limit dBuV	Margin dB	Detector	Line	PE
0.168000	39.90	11.2	65	25.2	QP	N	GND
0.478500	31.80	11.2	56	24.6	QP	N	GND
16.602000	31.60	11.1	60	28.4	QP	N	GND
16.755000	31.70	11.1	60	28.3	QP	N	GND
17.101500	30.70	11.1	60	29.3	QP	N	GND
21.246000	32.40	11.3	60	27.6	QP	N	GND

**MEASUREMENT RESULT: "CTL201224501\_fin2"**

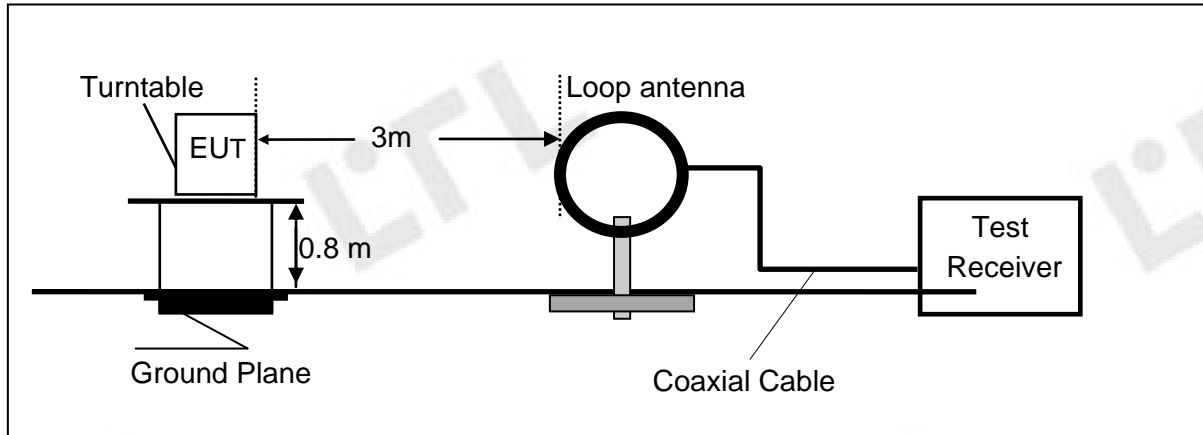
12/24/2020 10:52AM

Frequency MHz	Level dBuV	Transd dB	Limit dBuV	Margin dB	Detector	Line	PE
28.167000	28.60	11.4	50	21.4	AV	N	GND
28.486500	32.40	11.4	50	17.6	AV	N	GND
28.810500	30.20	11.4	50	19.8	AV	N	GND
29.134500	29.00	11.5	50	21.0	AV	N	GND
29.454000	33.50	11.5	50	16.5	AV	N	GND
29.773500	33.70	11.5	50	16.3	AV	N	GND

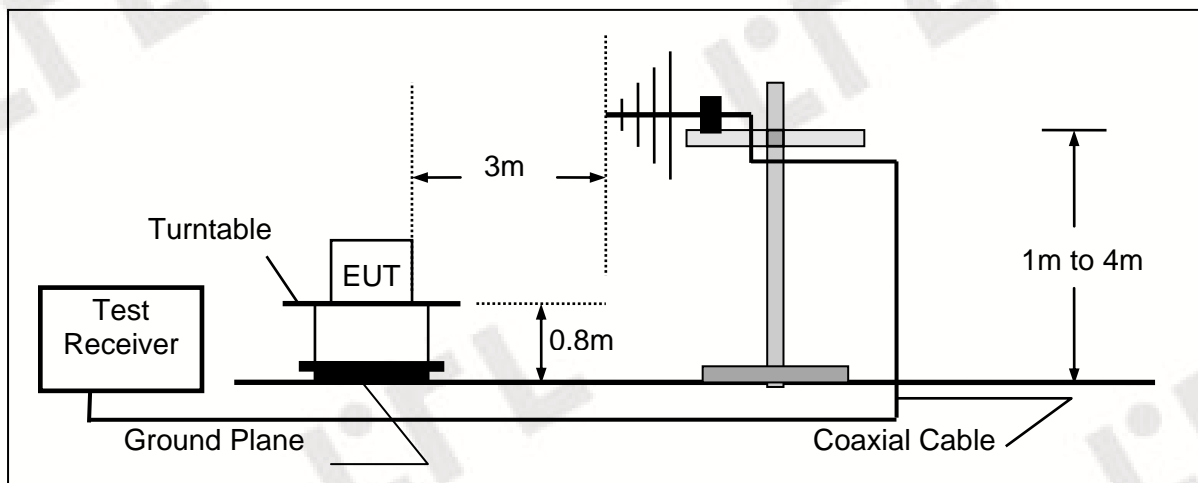
## 4.2. Radiated Emission

### TEST CONFIGURATION

Radiated Emission Test Set-Up  
Frequency range 9KHz – 30MHz



Frequency range 30MHz – 1000MHz



## **TEST PROCEDURE**

- 1 The EUT was placed on a turn table which is 0.8m above ground plane.
- 2 Maximum procedure was performed by raising the receiving antenna from 1m to 4m and rotating the turn table from 0°C to 360°C to acquire the highest emissions from EUT
- 3 And also, each emission was to be maximized by changing the polarization of receiving antenna both horizontal and vertical.
- 4 Repeat above procedures until all frequency measurements have been completed.

## **Field Strength Calculation**

The field strength is calculated by adding the Antenna Factor and Cable Factor and subtracting the Amplifier Gain and Duty Cycle Correction Factor(if any) from the measured reading. The basic equation with a sample calculation is as follows:

$$FS = RA + AF + CL - AG$$

Where FS = Field Strength	CL = Cable Attenuation Factor (Cable Loss)
RA = Reading Amplitude	AG = Amplifier Gain
AF = Antenna Factor	

For example

Frequency (MHz)	FS (dBμV/m)	RA (dBμV/m)	AF (dB)	CL (dB)	AG (dB)	Transd (dB)
300.00	40	58.1	12.2	1.6	31.90	-18.1

$$\text{Transd} = \text{AF} + \text{CL} - \text{AG}$$

## **RADIATION LIMIT**

Except as provided elsewhere in this Subpart, the emissions from an intentional radiator shall not exceed the field strength levels specified in the following table:

**9k~30MHz:**

Frequency Range (MHz)	E-field Strength Limit @ 30m (mV/m)	E-field Strength Limit @ 3m (dBμV/m)
0.009-0.490	2400/F(kHz)	129-94
0.490-1.705	24000/F(kHz)	74-63
1.705-30	30	70
Note: Where the limits have been defined at one distance, and a signal level measured at another, the limits have been extrapolated using the following formula: $\text{Extrapolation(dB)} = 40\log_{10}(\text{Measurement Distance/Specification Distance})$		

Note:

- (1) The tighter limit shall apply at the edge between two frequency bands.
- (2) dBuV/m = 20\*log(uV/m)

**30M~1GHz:**

Frequency (MHz)	Distance (Meters)	Radiated (dB $\mu$ V/m)	Radiated ( $\mu$ V/m)
30-88	3	40.0	100
88-216	3	43.5	150
216-960	3	46.0	200
Above 960	3	54.0	500

Note:

- (1) The tighter limit shall apply at the edge between two frequency bands.
- (2) Distance refers to the distance in meters between the test instrument antenna and the closest point of any part of the E.U.T.

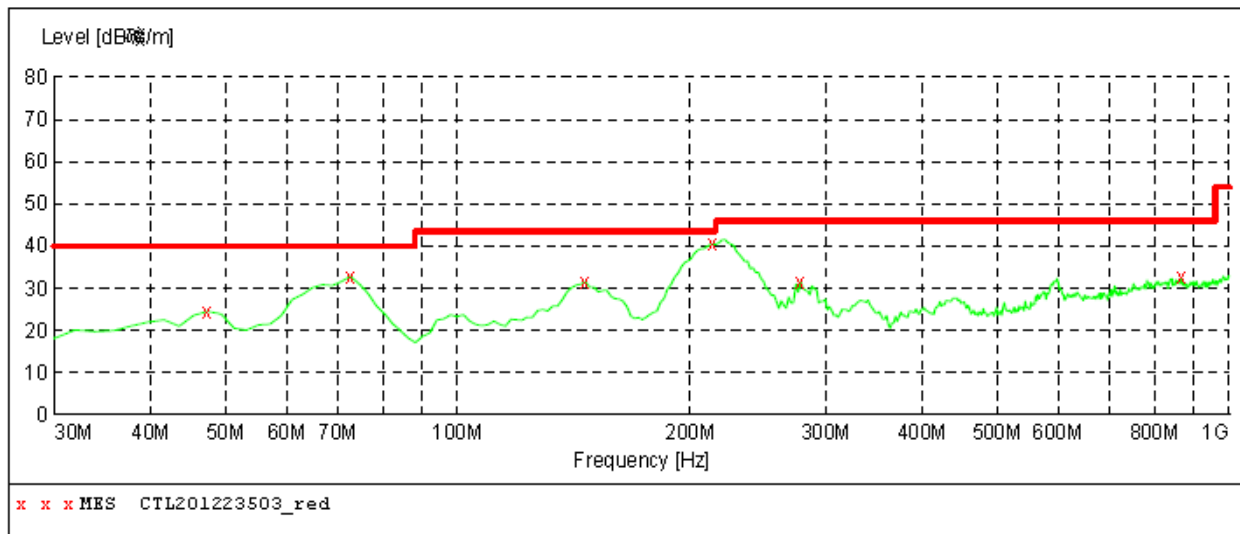
**TEST RESULTS****WORST-CASE RADIATED EMISSION BELOW 30 MHz**

Frequency (MHz)	Reading (dB $\mu$ V/m)	Polar	Antenna Factor (dB/m)	Cable Loss (dB)	Emission Levels (dB $\mu$ V/m)	Limits at 3m (dB $\mu$ V/m)	Detector Mode
0.1467(F)	63.47	Loop	23.64	0.01	87.12	105.33	PK
0.1467(F)	56.72	Loop	23.64	0.01	80.37	85.33	AV
0.110	41.58	Loop	23.55	0.01	65.14	106.78	PK
0.110	41.67	Loop	23.55	0.01	65.23	86.78	AV
1.162	36.74	Loop	25.07	-0.17	61.64	66.30	QP
1.533	36.55	Loop	27.12	-0.25	63.42	63.89	QP
12.475	36.24	Loop	23.91	-0.24	59.91	70.00	QP

- Remark:
1. Data of measurement within this frequency range shown “-” in the table above means the reading of emissions are attenuated more than 20dB below the permissible limits or the field strength is too small to be measured.
  2. The test limit distance is 3m limit.
  3. PK means Peak Value, QP means Quasi Peak Value, AV means Average Value.
  4. F means Fundamental Frequency.

**Radiated Emission Test Data 30-1000MHz:*****SWEEP TABLE: "test (30M-1G)"***

Short Description:		Field Strength			
Start	Stop	Detector	Meas. Time	IF Bandw.	Transducer
Frequency	Frequency				
30.0 MHz	1.0 GHz	MaxPeak	300.0 ms	120 kHz	VULB9168 20200407

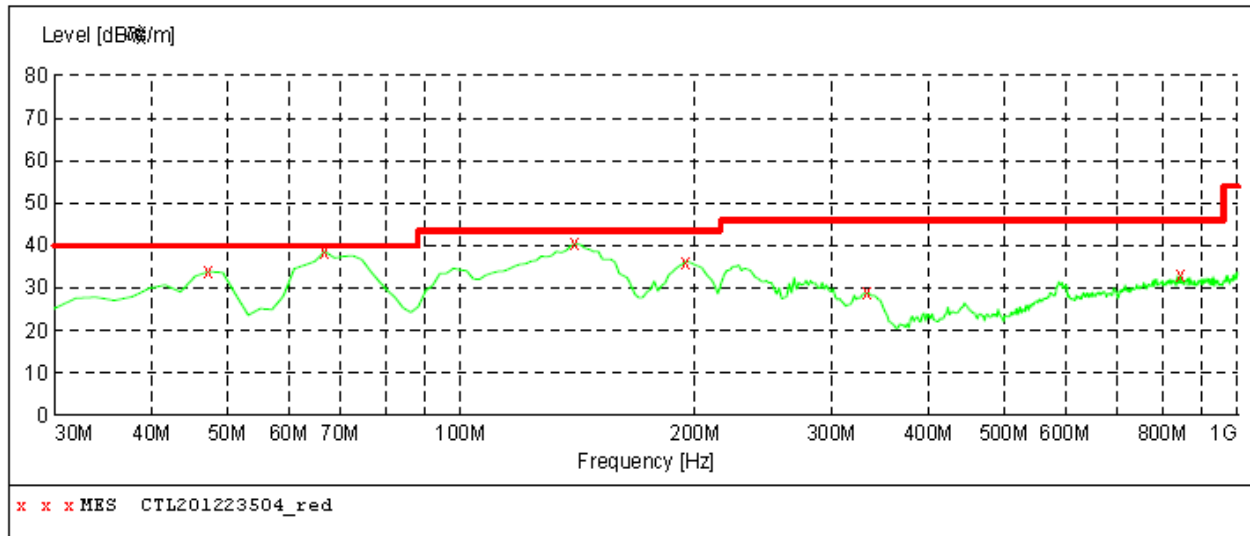
***MEASUREMENT RESULT: "CTL201223503\_red"***

2020-12-23 9:51

Frequency MHz	Level dBμV/m	Transd dB	Limit dBμV/m	Margin dB	Det.	Height cm	Azimuth deg	Polarization
47.460000	24.50	14.8	40.0	15.5	---	0.0	0.00	HORIZONTAL
72.680000	32.80	11.9	40.0	7.2	---	0.0	0.00	HORIZONTAL
146.400000	31.50	14.3	43.5	12.0	---	0.0	0.00	HORIZONTAL
214.300000	40.50	12.7	43.5	3.0	---	0.0	0.00	HORIZONTAL
278.320000	31.60	14.4	46.0	14.4	---	0.0	0.00	HORIZONTAL
866.140000	32.50	26.2	46.0	13.5	---	0.0	0.00	HORIZONTAL

**SWEEP TABLE: "test (30M-1G) "**

Short Description:		Field Strength			
Start	Stop	Detector	Meas. Time	IF Bandw.	Transducer
Frequency 30.0 MHz	Frequency 1.0 GHz	MaxPeak	300.0 ms	120 kHz	VULB9168 20200407

**MEASUREMENT RESULT: "CTL201223504\_red"**

2020-12-23 9:52

Frequency MHz	Level dBμV/m	Transd dB	Limit dBμV/m	Margin dB	Det.	Height cm	Azimuth deg	Polarization
47.460000	33.90	14.8	40.0	6.1	---	0.0	0.00	VERTICAL
66.860000	37.80	13.1	40.0	2.2	QP	0.0	0.00	VERTICAL
140.580000	40.50	14.3	43.5	3.0	---	0.0	0.00	VERTICAL
194.900000	36.20	12.0	43.5	7.3	---	0.0	0.00	VERTICAL
334.580000	28.80	15.7	46.0	17.2	---	0.0	0.00	VERTICAL
844.800000	33.00	26.3	46.0	13.0	---	0.0	0.00	VERTICAL



### 4.3. 20dB Bandwidth/99% Bandwidth

#### Limit

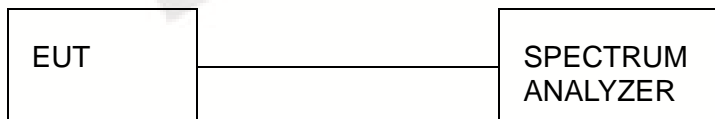
The 20dB bandwidth shall be less than 80% of the permitted frequency band.

#### Test Procedure

The transmitter output was connected to the spectrum analyzer through an attenuator. The bandwidth of the fundamental frequency was measured by spectrum analyzer with 1 KHz RBW and 3 KHz VBW.

The 20dB bandwidth is defined as the total spectrum the power of which is higher than peak power minus 20dB.

#### Test Configuration

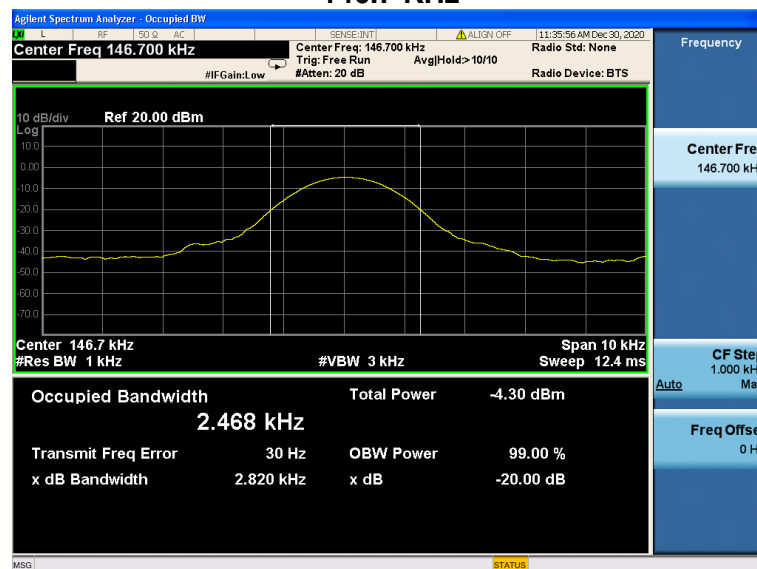


#### Test Results

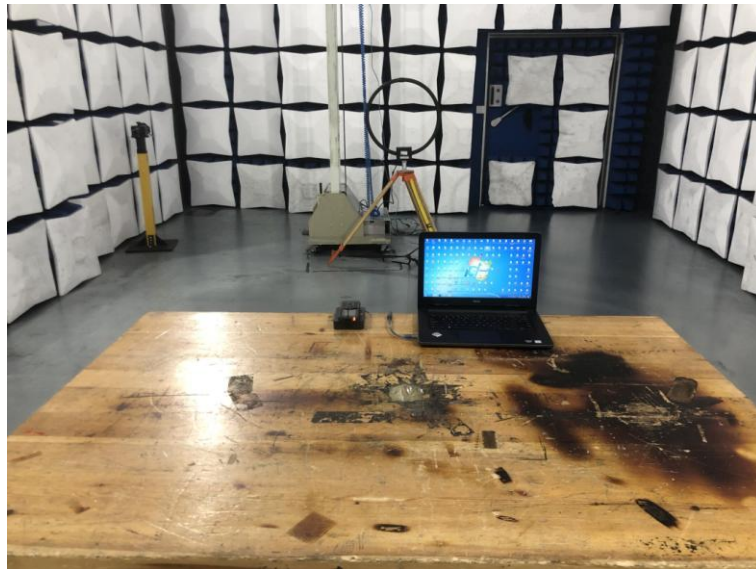
##### Mode1

Frequency(MHz)	20dB bandwidth(KHz)	99% OBW(KHz)	Result
0.1467	2.820	2.468	Pass

##### 146.7 KHz

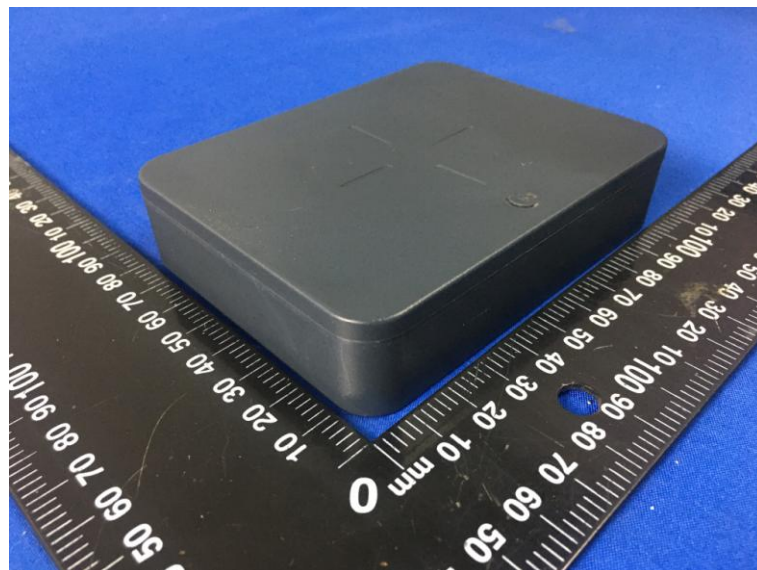
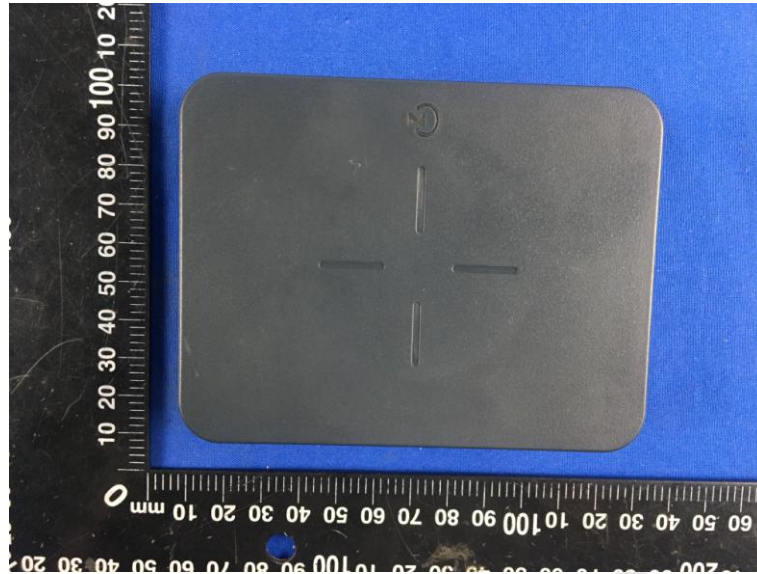


## 5. Test Setup Photos of the EUT



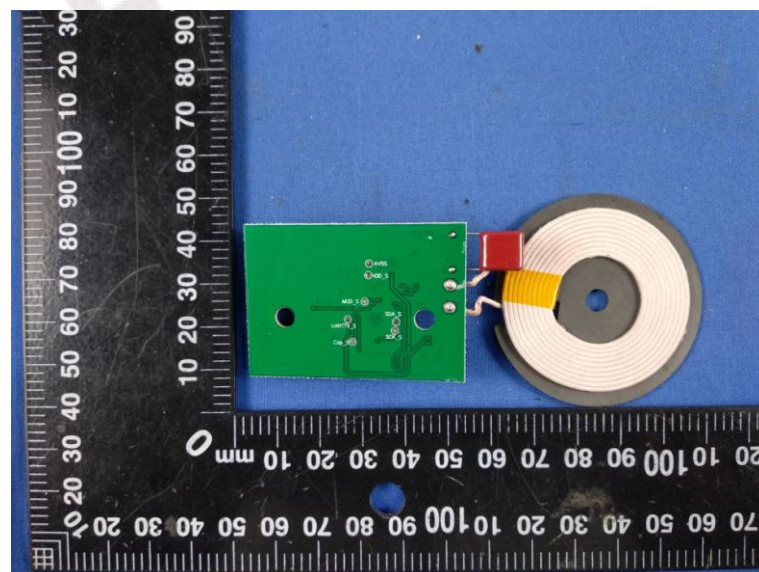
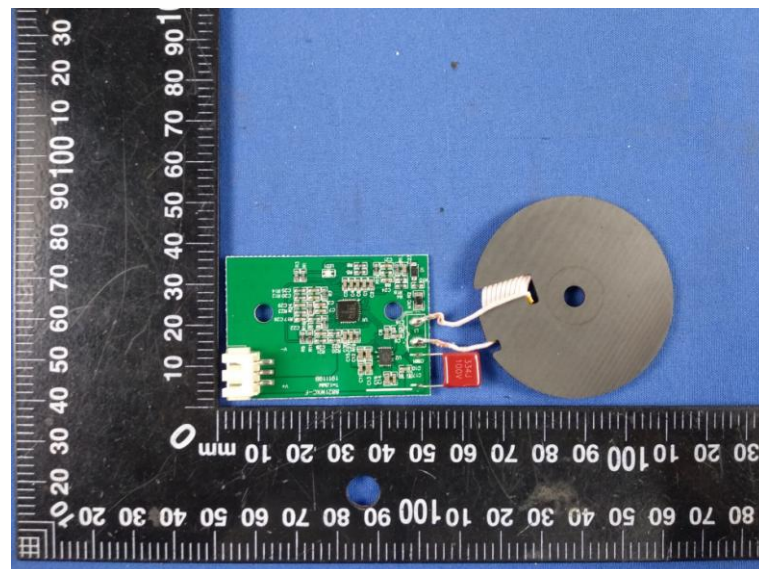
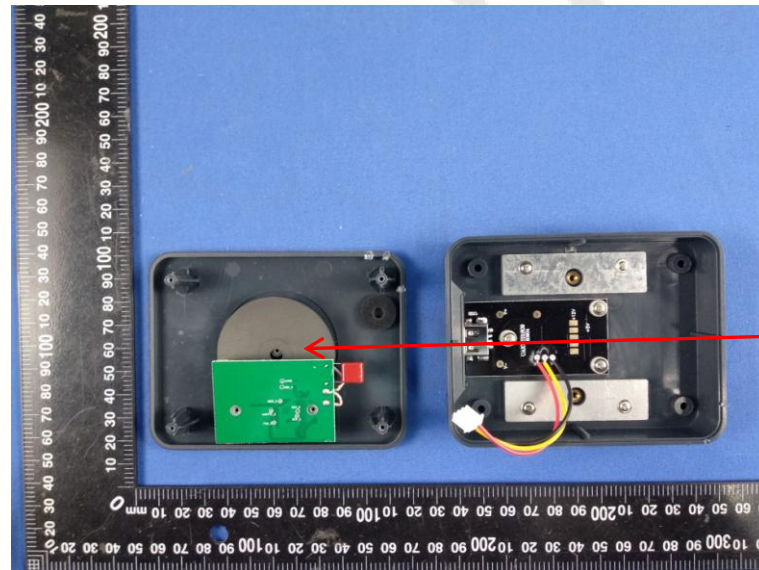
## External and Internal Photos of the EUT

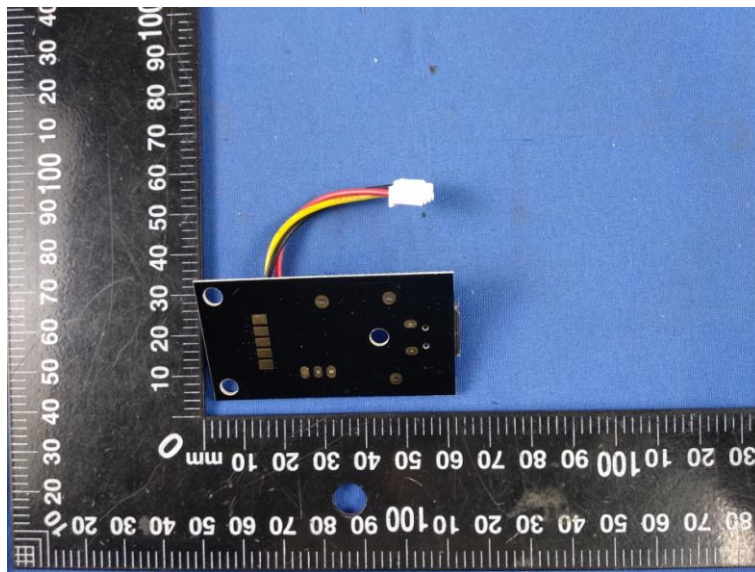
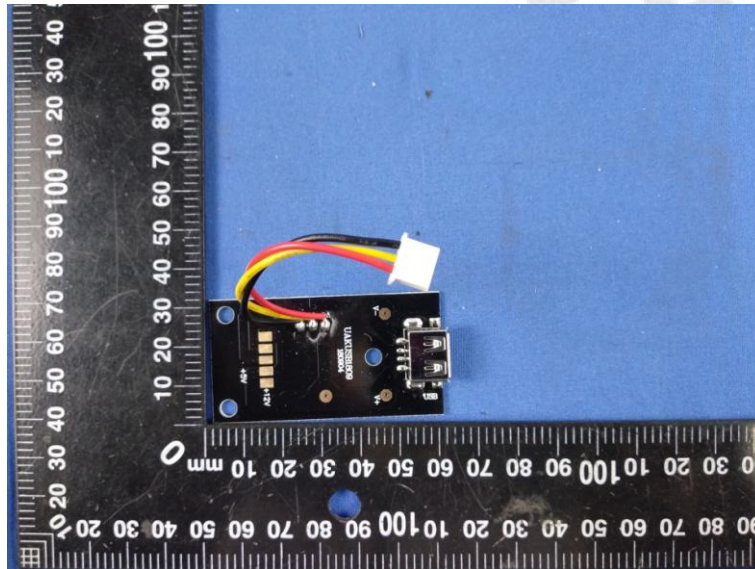
### External photos







Internal Photos of EUT



.....End of Report.....