

Photo 1



Photo 2



Photo 3



Photo 4

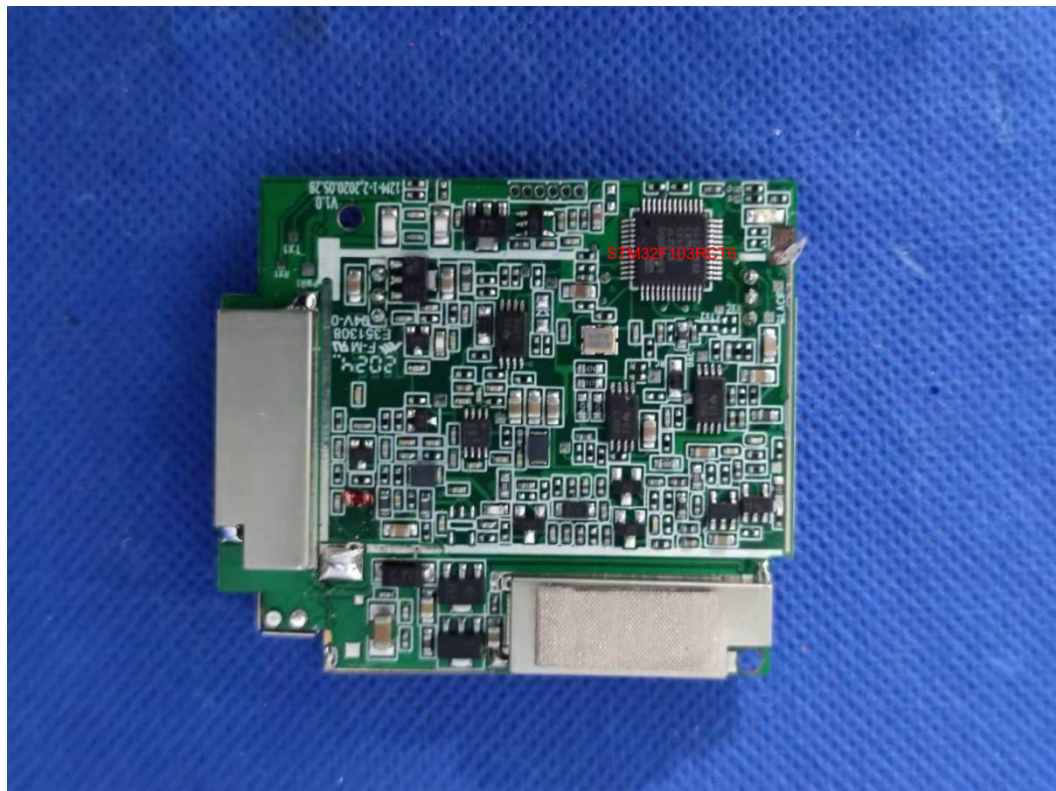




Photo 6

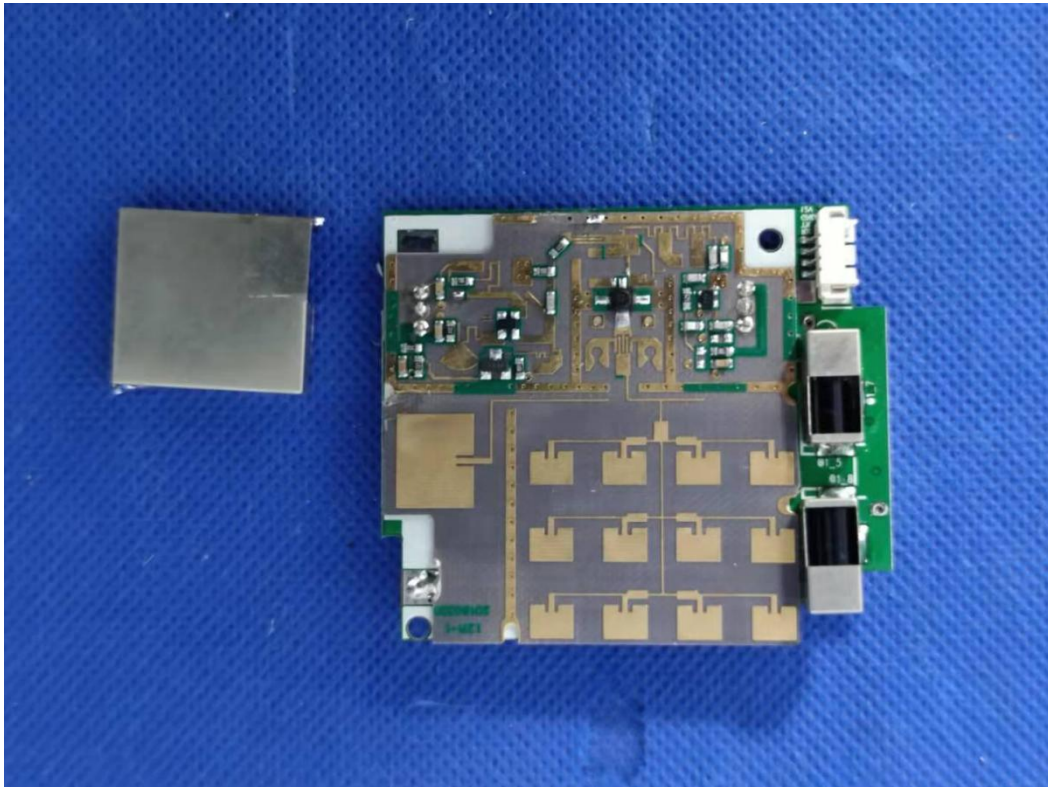
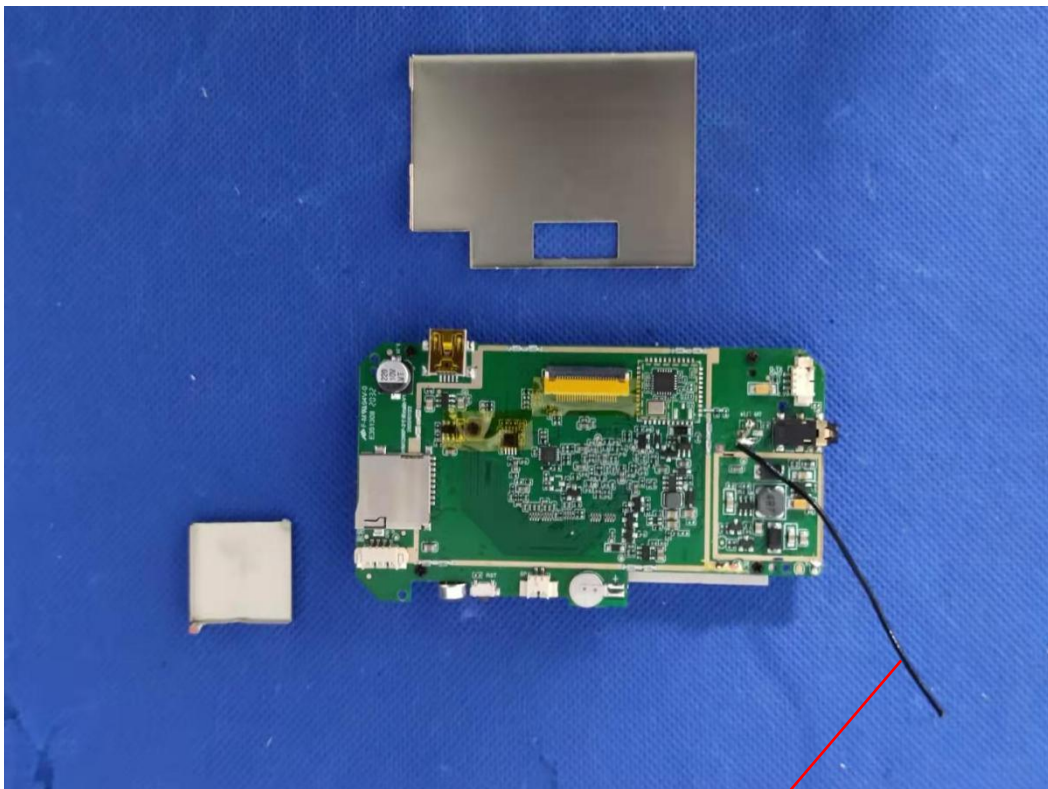


Photo 7



Wifi antenna

A photograph of a green printed circuit board (PCB) for a mobile phone, showing various components like a battery, camera, and connectors. The board is populated with numerous integrated circuits, resistors, and capacitors. Key components visible include a large silver battery at the top left, a camera module at the top center, a USB port at the top right, and a speaker at the bottom left. The PCB is labeled with 'F.M.M. BAY-D', 'E361508 2032', 'V011288-3-01 Rev00-V1', and '20060722'.



Photo 10

