

**FCC TEST REPORT**  
**For**  
**FUJIAN XUNTAI ELECTRONIC TECHNOLOGY CO.LTD**  
**Smart Neck Massager**  
**Model No.: XT-S600**

Prepared for : FUJIAN XUNTAI ELECTRONIC TECHNOLOGY CO.LTD  
Address : NO.143, Shangcun, qinxiyang Industrial Zone, Fu'an City, Fujian Province, China

Prepared by : Shenzhen LCS Compliance Testing Laboratory Ltd.  
Address : 101, 201 Bldg A & 301 Bldg C, Juji Industrial Park Shajing Street, Baoan District, Shenzhen, China

Tel : (+86)755-82591330  
Fax : (+86)755-82591332  
Web : www.LCS-cert.com  
Mail : webmaster@LCS-cert.com

Date of receipt of test sample : December 24, 2020  
Number of tested samples : 1  
Serial number : Prototype  
Date of Test : December 24, 2020 ~ December 31, 2020  
Date of Report : January 04, 2021

# FCC TEST REPORT

## FCC CFR 47 PART 15 C(15.231)

**Report Reference No.** ..... : **LCS201223067AEA**

**Date of Issue** ..... : January 04, 2021

**Testing Laboratory Name**..... : **Shenzhen LCS Compliance Testing Laboratory Ltd.**

**Address** ..... : 101, 201 Bldg A & 301 Bldg C, Juji Industrial Park Shajing Street,  
Baoan District, Shenzhen, China

**Testing Location/ Procedure** ..... : Full application of Harmonised standards ■  
Partial application of Harmonised standards □  
Other standard testing method □

**Applicant's Name** ..... : **FUJIAN XUNTAI ELECTRONIC TECHNOLOGY CO.LTD**

**Address** ..... : NO.143, Shangcun, qinxiyang Industrial Zone, Fu' an City, Fujian  
Province, China

### Test Specification

**Standard**..... : FCC CFR 47 PART 15 Subpart C(15.231), ANSI C63.10-2013

**Test Report Form No.**..... : LCSEMC-1.0

**TRF Originator**..... : Shenzhen LCS Compliance Testing Laboratory Ltd.

**Master TRF** ..... : Dated 2011-03

### Shenzhen LCS Compliance Testing Laboratory Ltd. All rights reserved.

This publication may be reproduced in whole or in part for non-commercial purposes as long as the Shenzhen LCS Compliance Testing Laboratory Ltd. is acknowledged as copyright owner and source of the material. Shenzhen LCS Compliance Testing Laboratory Ltd. takes no responsibility for and will not assume liability for damages resulting from the reader's interpretation of the reproduced material due to its placement and context.

**Test Item Description.** ..... : **Smart Neck Massager**

**Trade Mark**..... : Oseemoon

**Model/ Type reference**..... : XT-S600

**Ratings** ..... : Tx: DC 3V  
Rx: Input: DC 5V, 0.3A, 1.5W  
DC 3.7V by Rechargeable Li-ion Battery(1500mAh)

**Result** ..... : **Positive**

**Compiled by:**

*Jin Wang*

Jin Wang / Administrator

**Supervised by:**

*Linda He*

Linda He / Technique principal

**Approved by:**

*Gavin Liang*

Gavin Liang/ Manager

## FCC -- TEST REPORT

Test Report No. : LCS201223067AEA	January 04, 2021 Date of issue
-----------------------------------	-----------------------------------

EUT.....	: Smart Neck Massager
Type / Model.....	: XT-S600
<b>Applicant.....</b>	<b>: FUJIAN XUNTAI ELECTRONIC TECHNOLOGY CO.LTD</b>
Address.....	: N0.143, Shangcun, qinxiyang Industrial Zone, Fu' an City, Fujian Province, China
Telephone.....	: /
Fax.....	: /
<b>Manufacturer.....</b>	<b>: FUJIAN XUNTAI ELECTRONIC TECHNOLOGY CO.LTD</b>
Address.....	: N0.143, Shangcun, qinxiyang Industrial Zone, Fu' an City, Fujian Province, China
Telephone.....	: /
Fax.....	: /
<b>Factory.....</b>	<b>: FUJIAN XUNTAI ELECTRONIC TECHNOLOGY CO.LTD</b>
Address.....	: N0.143, Shangcun, qinxiyang Industrial Zone, Fu' an City, Fujian Province, China
Telephone.....	: /
Fax.....	: /

Test Result	Positive
-------------	----------

The test report merely corresponds to the test sample.

It is not permitted to copy extracts of these test result without the written permission of the test laboratory.

### **Revision History**

Revision	Issue Date	Revisions	Revised By
000	January 04, 2021	Initial Issue	Gavin Liang

## TABLE OF CONTENTS

<b>1. GENERAL INFORMATION .....</b>	<b>6</b>
1.1. DESCRIPTION OF DEVICE (EUT) .....	6
1.2. OBJECTIVE .....	7
1.3. ENVIRONMENTAL CONDITIONS .....	7
1.4. HOST SYSTEM CONFIGURATION LIST AND DETAILS .....	7
1.5. EXTERNAL I/O PORT .....	7
1.6. EUT OPERATION .....	8
1.7. ANTENNA SYSTEM .....	8
1.8. DESCRIPTION OF TEST FACILITY .....	8
1.9. STATEMENT OF THE MEASUREMENT UNCERTAINTY .....	8
<b>2. TEST METHODOLOGY .....</b>	<b>9</b>
2.1. EUT CONFIGURATION .....	9
2.2. EUT EXERCISE .....	9
2.3. GENERAL TEST PROCEDURES .....	9
2.4. INSTRUMENT CALIBRATION .....	9
2.5. TEST MODE .....	9
<b>3. SYSTEM TEST CONFIGURATION .....</b>	<b>10</b>
3.1. JUSTIFICATION .....	10
3.2. EUT EXERCISE SOFTWARE .....	10
3.3. SPECIAL ACCESSORIES .....	10
3.4. BLOCK DIAGRAM/SCHEMATICS .....	10
3.5. EQUIPMENT MODIFICATIONS .....	10
3.6. TEST SETUP .....	10
<b>4. SUMMARY OF TEST RESULTS .....</b>	<b>11</b>
<b>5. TEST ITEMS AND RESULTS .....</b>	<b>12</b>
5.1. TRANSMITTER DEACTIVATION TIME .....	12
5.2. TRANSMITTER FIELD STRENGTH OF EMISSIONS .....	13
5.3. 20DB BANDWIDTH EMISSIONS .....	22
5.4. DUTY CYCLE .....	23
5.5. POWER LINE CONDUCTED EMISSIONS .....	25
5.6. ANTENNA REQUIREMENT .....	28
<b>6. LIST OF MEASURING EQUIPMENTS .....</b>	<b>29</b>
<b>7. TEST SETUP PHOTOGRAPHS .....</b>	<b>30</b>
<b>8. EXTERIOR PHOTOGRAPHS OF THE EUT .....</b>	<b>32</b>
<b>9. INTERIOR PHOTOGRAPHS OF THE EUT .....</b>	<b>36</b>

## 1. GENERAL INFORMATION

### 1.1. Description of Device (EUT)

EUT	: Smart Neck Massager
Test Model	: XT-S600
Hardware version	: V1.0
Software version	: V1.0
Power Supply	: Tx: DC 3V Rx: Input: DC 5V, 0.3A, 1.5W DC 3.7V by Rechargeable Li-ion Battery(1500mAh)
Operation frequency	: 433.92MHz
Modulation Type	: ASK
Channel Number	: 1
Antenna Type	: Internal Antenna
Antenna Gain	: 0dBi

## 1.2. Objective

The primary objective of the manufacturer is compliance with Subpart C of Part 15 of FCC Rules for the radiated and conducted emissions of intentional radiator. Certification of these devices is required as a prerequisite to marketing as defined in Part 2 the FCC Rules Certification is a procedure where the manufacturer or a contracted laboratory makes measurements and submits the test data and technical information to the FCC. The FCC issues a grant of equipment authorization upon successful completion of their review of the submitted documents. Once the equipment authorization has been obtained, the label indicating compliance must be attached to all identical units, which are subsequently manufactured. Maintenance of compliance is the responsibility of the manufacturer. Any modification of the product which may result in increased emissions should be checked to ensure compliance has been maintained (i.e., printed circuit board layout changes, different line filter, different power supply, harnessing or I/O cable changes, etc.).

## 1.3. Environmental Conditions

During the measurement the environmental conditions were within the listed ranges:

- Temperature: 15-35°C
- Humidity: 30-60 %
- Atmospheric pressure: 86-106 kPa

## 1.4. Host System Configuration List and Details

Manufacturer	Description	Model	Serial Number	Certificate
Dell	PC	Optiplex 380 MT	2YK643X	FCC

## 1.5. External I/O Port

I/O Port Description	Quantity	Cable
Micro USB Port	1	USB Cable: 0.8m, unshielded

## 1.6. EUT Operation

The EUT was placed in a RF test mode for testing of the transmitter and in normal mode of operation for testing the digital circuitry and receiver. In both modes the carrier current device within the EUT was operational. The EUT is controlled by Mobile phone software when we press the virtual switch, whether press one, two or three virtual switch, it only recognizes one virtual switch and at the same time the EUT transmit one signal. It only transmits once for 0.776s.

## 1.7. Antenna System

The directional gains of antenna used for transmitting is 0dBi, and EUT uses an PCB antenna which is permanently attached.

## 1.8. Description of Test Facility

NVLAP Accreditation Code is 600167-0.

FCC Designation Number is CN5024.

CAB identifier is CN0071.

CNAS Registration Number is L4595.

The 3m-Semi anechoic test site fulfils CISPR 16-1-4 according to ANSI C63.10:2013 and CISPR 16-1-4:2010 SVSWR requirement for radiated emission above 1GHz.

## 1.9. Statement of The Measurement Uncertainty

ISO Guide 17025 requires that an estimate of the measurement uncertainties associated with the emissions test results be included in the report. The measurement uncertainties given below are based on a 95% confidence level and were calculated in accordance with NAMAS document NIS 81.

Test Item	Frequency Range	Uncertainty	Note
Radiation Uncertainty :	9KHz~30MHz	±3.10dB	(1)
	30MHz~200MHz	±2.96dB	(1)
	200MHz~1000MHz	±3.10dB	(1)
	1GHz~26.5GH	±4.20dB	(1)
Conduction Uncertainty :	150kHz~30MHz	±1.63dB	(1)
Power disturbance :	30MHz~300MHz	±1.60dB	(1)

- (1). This uncertainty represents an expanded uncertainty expressed at approximately the 95% confidence level using a coverage factor of k=2.



## **2. TEST METHODOLOGY**

All measurements contained in this report were conducted with ANSI C63.10-2013, American National Standard of Procedures for Compliance Testing of Unlicensed Wireless Devices.

The radiated testing was performed at an antenna-to-EUT distance of 3 meters. All radiated and conducted emissions measurement was performed at Shenzhen LCS Compliance Testing Laboratory Ltd.

### **2.1. EUT Configuration**

The EUT configuration for testing is installed on RF field strength measurement to meet the Commissions requirement and operating in a manner that intends to maximize its emission characteristics in a continuous normal application.

### **2.2. EUT Exercise**

The EUT was operated in the normal operating mode. The TX frequency that was fixed which was for the purpose of the measurements.

According to its specifications, the EUT must comply with the requirements of the Section 15.203, 15.205, 15.207, 15.209 and 15.231 under the FCC Rules Part 15 Subpart C.

### **2.3. General Test Procedures**

#### **2.3.1 Conducted Emissions**

The EUT is placed on the turntable, which is 0.8 m above ground plane. According to the requirements in Section 13.1.4.1 of ANSI C63.10 Conducted emissions from the EUT measured in the frequency range between 0.15 MHz and 30MHz using Quasi-peak and average detector modes.

#### **2.3.2 Radiated Emissions**

The EUT is placed on a turn table, which is 0.8 m above ground plane and for below 1GHz and 1.5m for above 1GHz. The turntable shall rotate 360 degrees to determine the position of maximum emission level. EUT is set 3m away from the receiving antenna, which varied from 1m to 4m to find out the highest emission. And also, each emission was to be maximized by changing the polarization of receiving antenna both horizontal and vertical. In order to find out the maximum emissions, exploratory radiated emission measurements were made according to the requirements in Section 13.1.4.1 of ANSI C63.10

### **2.4. Instrument Calibration**

All test equipment is regularly checked to ensure that performance is maintained in accordance with the manufacturer's specifications. All antennas are calibrated at regular intervals with respect to tuned half-wave dipoles. An exhibit of this report contains the list of test equipment used and calibration information.

### **2.5. Test Mode**

The EUT has been tested under engineering mode. The field strength of radiation emission was measured in the following position: EUT stand-up position (Y axis), lie-down position (X, Z axis). The worst case of X axis was reported.

A new battery supplied DC 3V power to the EUT for testing.

Press any one of the four buttons on the EUT can transmit 433.92MHz control signal. All three buttons were tested for the pre-test, and we found that pressed the A button was the worst case. Only recorded the worst test case in this report.

The EUT just transmits signal one time when you press the button, whether you release at once or not. If you want to transmit again, you must release the button and press the button again.

\*\*\*Note: Using a temporary antenna connector for the EUT when conducted measurements are performed.

### **3. SYSTEM TEST CONFIGURATION**

#### **3.1. Justification**

The system was configured for testing in a continuous transmits condition.

#### **3.2. EUT Exercise Software**

N/A

#### **3.3. Special Accessories**

N/A

#### **3.4. Block Diagram/Schematics**

Please refer to the related document

#### **3.5. Equipment Modifications**

Shenzhen LCS Compliance Testing Laboratory Ltd. has not done any modification on the EUT.

#### **3.6. Test Setup**

Please refer to the test setup photo.

#### 4. SUMMARY OF TEST RESULTS

Rules	Description of test	Result
§15.203	Antenna Requirement	Compliant
§15.205	Restricted Band	Compliant
§15.209	General Requirement	Compliant
§15.231 (b)	Radiated Emissions	Compliant
§15.231 (c)	20dB Bandwidth Testing	Compliant
§15.231 (a)(1)	Deactivation Testing	Compliant
§15.231	Duty cycle Factor	Compliant
§15.207	Conducted Emissions	Compliant

*Note: All buttons have been taken into consideration and only worst case reported.*

## 5. TEST ITEMS AND RESULTS

### 5.1. Transmitter Deactivation Time

FCC 15.231 (a)

#### 5.1.1. Limit

A manually operated transmitter shall employ a switch that will automatically deactivate the transmitter within not more than 5 seconds of being released.

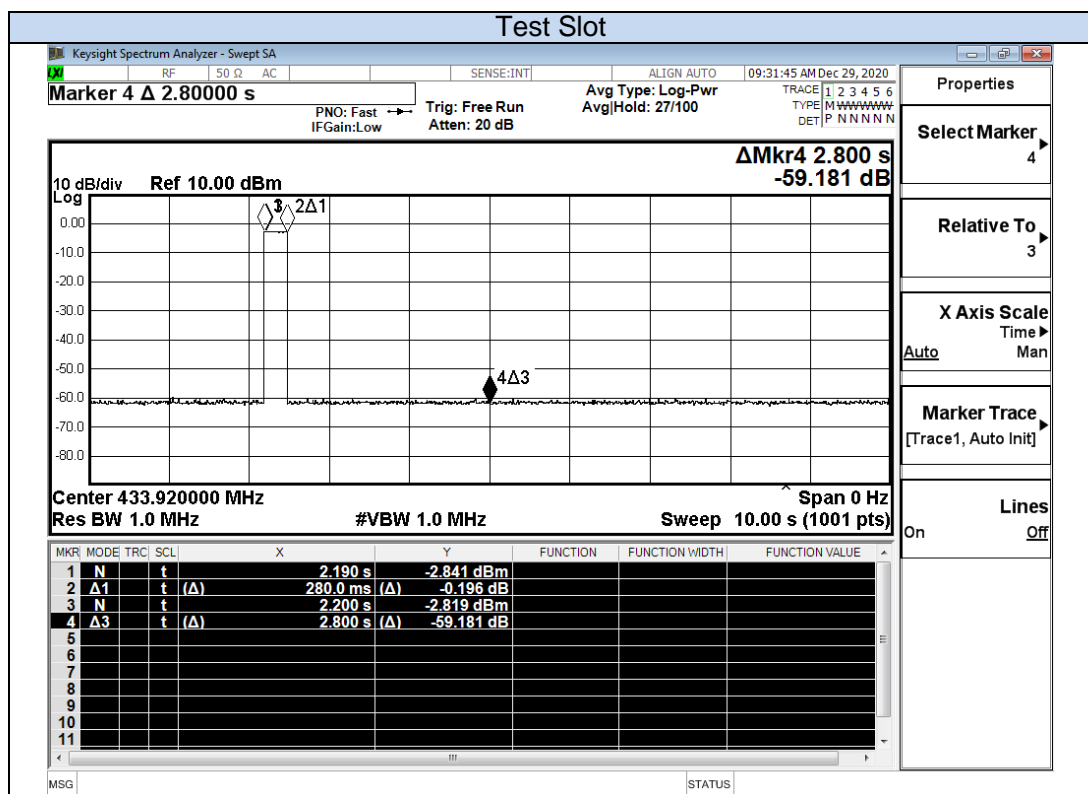
#### 5.1.2. Test Procedure

Maximizing procedure was performed on the highest emissions to ensure that the EUT complied with all installation combinations.

#### A5.1.3. Test Results

Temperature	24.1°C	Humidity	52.9%
Test Engineer	Jay Li	Configurations	TX Mode

Frequency (MHz)	Activation Time (s)	Limit: not more than 5 seconds of being released (s)	Conclusion
433.92	0.28	5	PASS



## 5.2. Transmitter Field Strength of Emissions

### 5.2.1. Limit

#### FCC §15.231 (b)

In addition to the provisions of § 15.205, the field strength of emissions from Intentional radiators operated under this section shall not exceed the following:

Fundamental frequency (MHz)	Field Strength of Fundamental (microvolt/meter)	Field Strength of spurious emissions (microvolt/meter)
40.66-40.70	2,250	225
70-130	1,250	125
130-174	1,250 to 3,370	125 to 375
174-260	3,750	375
260-470	3,750 to 12,500	375 to 1,250
Above 470	12,500	1,250

[Where F is the frequency in MHz, the formulas for calculating the maximum permitted fundamental field strengths are as follows: for the band 130-174 MHz,  $\mu\text{V/m}$  at 3 meters =  $56.81818(F) - 6136.3636$ ; for the band 260-470 MHz,  $\mu\text{V/m}$  at 3 meters =  $41.6667(F) - 7083.3333$ . The maximum permitted unwanted emission level is 20 dB below the maximum permitted fundamental level.]

§15.205 (a) Except as shown in paragraph (d) of this section, only spurious emissions are permitted in any of the frequency bands listed below:

MHz	MHz	MHz	GHz
0.090-0.110	16.42-16.423	608-614	4.5-5.15
0.495-0.505	16.69475-16.68525	960-1240	5.35-5.46
2.1735-2.1905	16.80425-16.80475	1300-1427	7.25-7.75
4.125-4.128	25.525-67	1435-1626.5	8.025-8.5
4.17725-4.17775	37.5-38.25	1645.5-1646.5	9.0-9.2
4.20725-4.20775	73-74.6	1660-1710	9.3-9.5
6.215-6.218	74.8-75.2	1718.8-1722.2	10.6-12.7
6.26775-6.26825	108-121.94	2200-2300	13.25-13.4
6.31175-6.31225	123-138	2310-2390	14.47-14.5
8.291-8.294	149.9-150.05	2483.5-2500	15.35-16.2
8.362-8.366	156.52475-156.52525	2655-2900	17.7-21.4
8.37625-8.38675	156.7-156.9	3260-3267	22.01-23.12
8.41425-8.41475	162.0125167.17	3332-3339	23.6-24.0
12.29-12.293	167.72-173.2	3345.8-3358	31.2-31.8
12.51975-12.52025	240-285	3600-4400	36.43-36.5
12.57675-12.57725	322-335.4		.( <sup>2</sup> )
13.36-13.41	399.9-410		

1 Until February 1, 1999, this restricted band shall be 0.490-0.510 MHz.

2 Above 38.6

§15.205 (b) Except as provided in paragraphs (d) and (e), the field strength of emissions appearing within these frequency bands shall not exceed the limits shown in Section 15.209. At frequencies equal to or less than 1000 MHz, compliance with the limits in Section 15.209 shall be demonstrated using measurement instrumentation employing a CISPR quasi peak detector. Above 1000 MHz, compliance with the emission limits in Section 15.209 shall be demonstrated based on the average value of the measured emissions. The provisions in Section 15.35 apply to these measurements.

§15.209 (a) Except as provided elsewhere in this Subpart, the emissions from an intentional radiator shall not exceed the field strength levels specified in the following table:

Frequency (MHz)	Field Strength (microvolts/meter)	Measurement Distance (meters)
0.009-0.490	2400/F (KHz)	300
0.490-1.705	24000 (KHz)	30
1.705-30.0	30	30
30-88	100**	3
88-216	150**	3
216-960	200**	3
Above 960	500	3

\*\* Except as provided in paragraph (g), fundamental emissions from intentional radiators operating under this Section shall not be located in the frequency bands 54 72 MHz, 76 88 MHz, 174 216 MHz or 470 806 MHz. However, operation within these frequency bands is permitted under other sections of this Part, e.g., Sections 15.231 and 15.241.

§15.209 (b) In the emission table above, the tighter limit applies at the band edges.

### 5.2.2. Measuring Instruments and Setting

Please refer to section 6 of equipments list in this report. The following table is the setting of spectrum analyzer and receiver.

Spectrum Parameter	Setting
Attenuation	Auto
Start Frequency	1000 MHz
Stop Frequency	10th carrier harmonic
RB / VB (Emission in restricted band)	1MHz / 1MHz for Peak, 1 MHz / 10Hz for Average
RB / VB (Emission in non-restricted band)	1MHz / 1MHz for Peak, 1 MHz / 10Hz for Average

Spectrum Parameter	Setting
Attenuation	Auto
Start ~ Stop Frequency	9kHz~150kHz / RB 200Hz for QP
Start ~ Stop Frequency	150kHz~30MHz / RB 9kHz for QP
Start ~ Stop Frequency	30MHz~1000MHz / RB 120kHz for QP

### 5.2.3. Test Procedures

#### 1) Sequence of testing 9 kHz to 30 MHz

Setup:

- The equipment was set up to simulate a typical usage like described in the user manual or described by manufacturer.
- If the EUT is a tabletop system, a rotatable table with 0.8 m height is used.
- If the EUT is a floor standing device, it is placed on the ground.
- Auxiliary equipment and cables were positioned to simulate normal operation conditions.
- The AC power port of the EUT (if available) is connected to a power outlet below the turntable.
- The measurement distance is 3 meter.
- The EUT was set into operation.

Premeasurement:

- The turntable rotates from 0° to 315° using 45° steps.
- The antenna height is 1.5 meter.
- At each turntable position the analyzer sweeps with peak detection to find the maximum of all emissions

Final measurement:

- Identified emissions during the premeasurement the software maximizes by rotating the turntable position (0° to 360°) and by rotating the elevation axes (0° to 360°).
- The final measurement will be done in the position (turntable and elevation) causing the highest emissions with QPK detector.
- The final levels, frequency, measuring time, bandwidth, turntable position, correction factor, margin to the limit and limit will be recorded. Also a plot with the graph of the premeasurement and the limit will be stored.

## 2) Sequence of testing 30 MHz to 1 GHz

Setup:

- The equipment was set up to simulate a typical usage like described in the user manual or described by manufacturer.
- If the EUT is a tabletop system, a table with 0.8 m height is used, which is placed on the ground plane.
- If the EUT is a floor standing device, it is placed on the ground plane with insulation between both.
- Auxiliary equipment and cables were positioned to simulate normal operation conditions
- The AC power port of the EUT (if available) is connected to a power outlet below the turntable.
- The measurement distance is 3 meter.
- The EUT was set into operation.

Premeasurement:

- The turntable rotates from 0° to 315° using 45° steps.
- The antenna is polarized vertical and horizontal.
- The antenna height changes from 1 to 3 meter.
- At each turntable position, antenna polarization and height the analyzer sweeps three times in peak to find the maximum of all emissions.

Final measurement:

- The final measurement will be performed with minimum the six highest peaks.
- According to the maximum antenna and turntable positions of premeasurement the software maximize the peaks by changing turntable position ( $\pm 45^\circ$ ) and antenna movement between 1 and 4 meter.
- The final measurement will be done with QP detector with an EMI receiver.
- The final levels, frequency, measuring time, bandwidth, antenna height, antenna polarization, turntable angle, correction factor, margin to the limit and limit will be recorded. Also a plot with the graph of the premeasurement with marked maximum final measurements and the limit will be stored.

### 3) Sequence of testing 1 GHz to 12.75 GHz

#### Setup:

- The equipment was set up to simulate a typical usage like described in the user manual or described by manufacturer.
- If the EUT is a tabletop system, a rotatable table with 1.5 m height is used.
- If the EUT is a floor standing device, it is placed on the ground plane with insulation between both.
- Auxiliary equipment and cables were positioned to simulate normal operation conditions
- The AC power port of the EUT (if available) is connected to a power outlet below the turntable.
- The measurement distance is 3 meter.
- The EUT was set into operation.

#### Premeasurement:

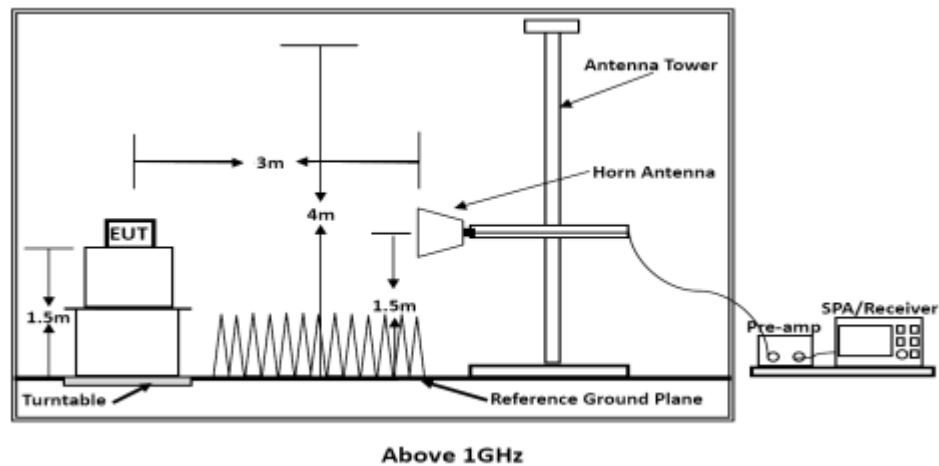
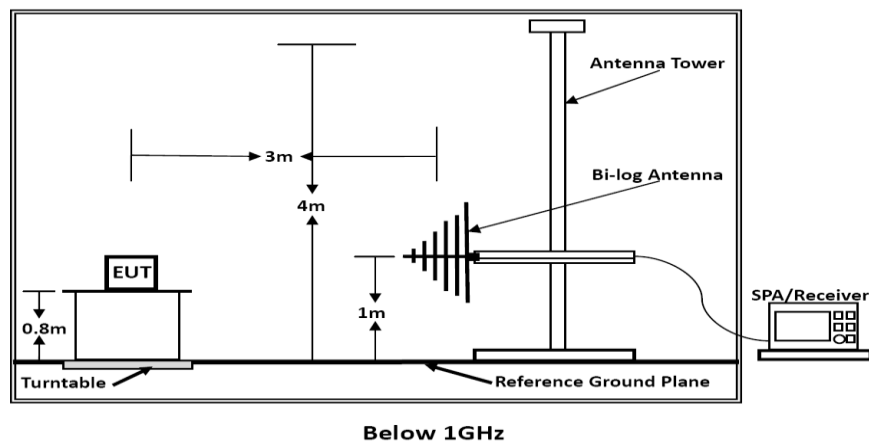
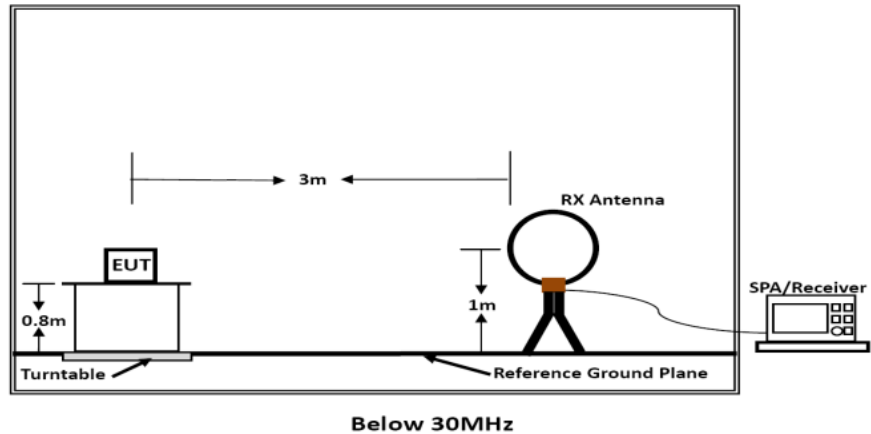
- The turntable rotates from 0° to 315° using 45° steps.
- The antenna is polarized vertical and horizontal.
- The antenna height is 1.5 meter.
- At each turntable position and antenna polarization the analyzer sweeps with peak detection to find the maximum of all emissions.

#### Final measurement:

- The final measurement will be performed with minimum the six highest peaks.
- According to the maximum found antenna polarisation and turntable position of the premeasurement the software maximizes the peaks by rotating the turntable position (0° to 360°). This measurement is repeated for different EUT-table positions (0° to 150° in 30°-steps). This procedure is repeated for both antenna polarisations.
- The final measurement will be done in the position (turntable, EUT-table and antenna polarization) causing the highest emissions with Peak and RMS detector.
- The final levels, frequency, measuring time, bandwidth, turntable position, EUT-table position, antenna polarization, correction factor, margin to the limit and limit will be recorded. Also a plot with the graph of the premeasurement with marked maximum final measurements and the limit will be stored.



## 5.2.4 Block Diagram of Test Setup



## 5.2.5. EUT Operation during Test

The EUT was programmed to be in continuously transmitting mode.

## 5.2.6. Results of Radiated Emissions (9 kHz~30MHz)

Temperature	24.3°C	Humidity	54.5%
Test Engineer	Jay Li	Configurations	TX Mode

Freq. (MHz)	Level (dBuV)	Over Limit (dB)	Over Limit (dBuV)	Remark
-	-	-	-	See Note

## Note:

The amplitude of spurious emissions which are attenuated by more than 20 dB below the permissible value has no need to be reported.

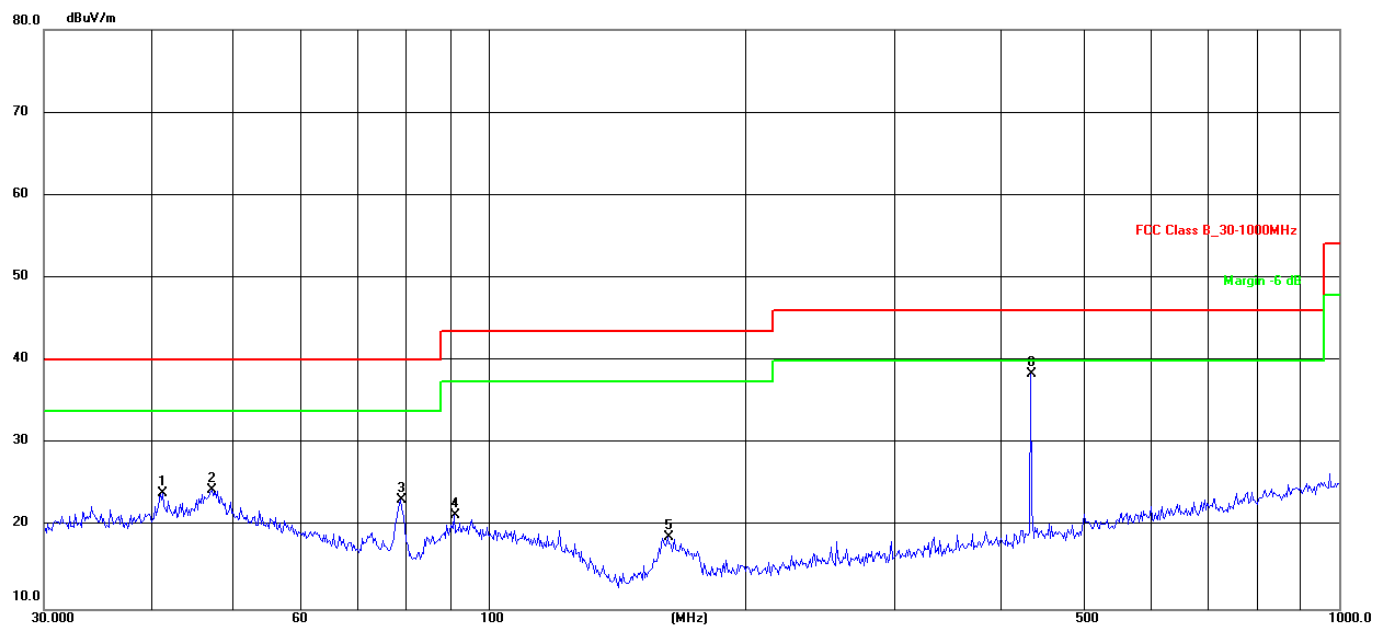
Distance extrapolation factor =  $40 \log (\text{specific distance} / \text{test distance})$  (dB);

Limit line = specific limits (dBuV) + distance extrapolation factor.

## 5.2.7. Results of Radiated Emissions (30MHz~1GHz)

Temperature	24.3°C	Humidity	54.5%
Test Engineer	Jay Li	Configurations	TX Mode

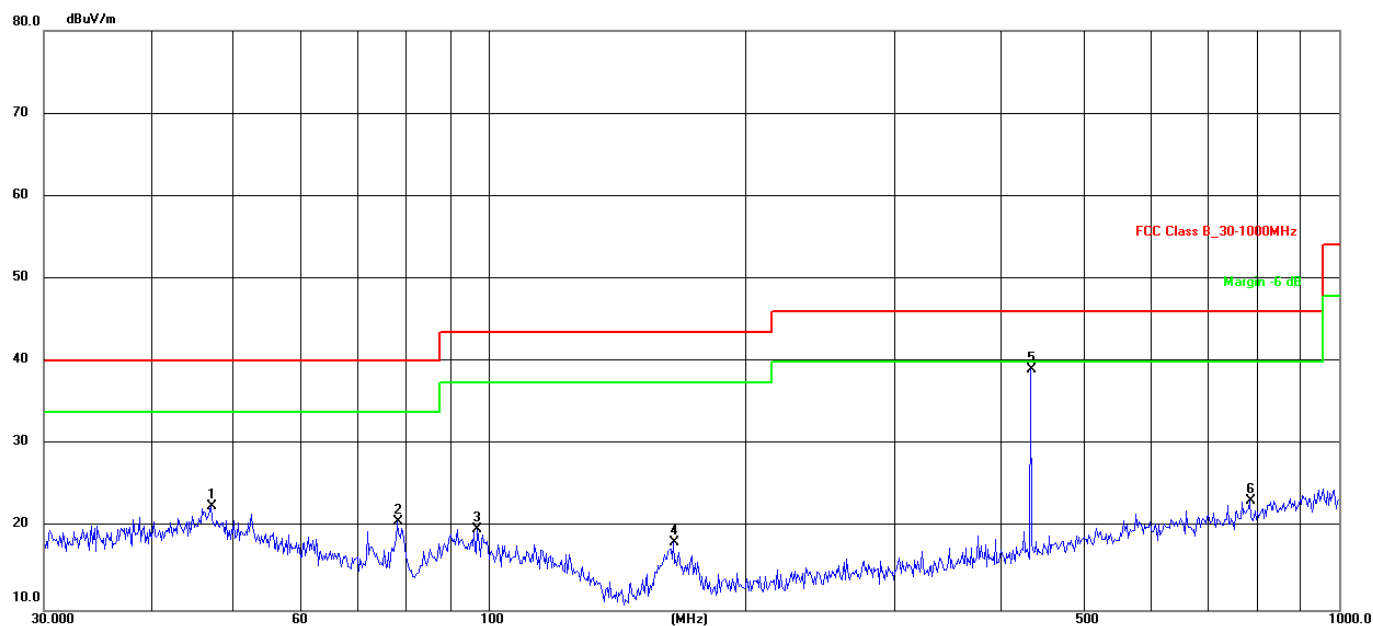
## Horizontal



No.	Frequency (MHz)	Reading (dBuV)	Factor (dB/m)	Level (dBuV/m)	Limit (dBuV/m)	Margin (dB)	Det.
1	41.4215	53.63	-29.59	24.04	40.00	-15.96	QP
2	47.3255	53.28	-28.85	24.43	40.00	-15.57	QP
3	78.6888	55.96	-32.64	23.32	40.00	-16.68	QP
4	91.1746	50.24	-28.80	21.44	43.50	-22.06	QP
5	162.6106	51.55	-32.81	18.74	43.50	-24.76	QP
6 *	433.9200	63.73	-25.22	38.51	46.00	-7.49	Peak

Fundamental Result						
Freq(MHz)	Peak Level (dBμV/m)	AV Factor(dBμV/m) (see Section 5.4)	Average Level (dBμV/m)	Limit(dBμV/m) (average)	Limit(dBμV/m) (Peak)	Conclusion
433.92	38.51	-10.18	28.33	80.80	100.80	PASS

## Vertical



No.	Frequency (MHz)	Reading (dBuV)	Factor (dB/m)	Level (dBuV/m)	Limit (dBuV/m)	Margin (dB)	Det.
1	47.1599	51.53	-28.86	22.67	40.00	-17.33	QP
2	78.1389	53.31	-32.59	20.72	40.00	-19.28	QP
3	97.1148	47.64	-27.82	19.82	43.50	-23.68	QP
4	164.9075	50.95	-32.72	18.23	43.50	-25.27	QP
5 *	433.9200	64.37	-25.22	39.15	46.00	-6.85	Peak
6	785.0935	43.01	-19.75	23.26	46.00	-22.74	QP

Fundamental Result						
Freq(MHz)	Peak Level (dBμV/m)	AV Factor(dBμV/m) (see Section 5.4)	Average Level (dBμV/m)	Limit(dBμV/m) (average)	Limit(dBμV/m) (Peak)	Conclusion
433.92	39.15	-10.18	28.97	80.80	100.80	PASS

## 5.2.8. Results of Radiated Emissions (Above 1GHz)

Temperature	24.6°C	Humidity	54.1%
Test Engineer	Jay Li	Configurations	TX Mode

**Peak Value:**

Frequency (MHz)	Reading Level (dBuV/m)	Factor (dB/m)	Peak value (dBuV/m)	Limit (dBuV/m)	Margin (dBuV/m)	Polarization
1301.76	30.52	5.30	35.82	74	-38.18	Horizontal
1735.68	28.60	4.68	33.28	74	-40.72	Horizontal
1301.76	30.06	5.30	35.36	74	-38.64	Vertical
1735.68	25.65	4.68	30.33	74	-43.67	Vertical

**Average Value:**

Frequency (MHz)	Peak Level (dBuV/m)	Duty cycle factor	Average value (dBuV/m)	Limit (dBuV/m)	Margin (dBuV/m)	Polarization
1301.76	35.82	-10.18	25.64	54	-28.36	Horizontal
1735.68	33.28	-10.18	23.10	54	-30.90	Horizontal
1301.76	35.36	-10.18	25.18	54	-28.82	Vertical
1735.68	30.33	-10.18	20.15	54	-33.85	Vertical

1. Measuring frequencies from 9k~10th harmonic (ex. 5GHz), No emission found between lowest internal used/generated frequency to 30MHz.
2. Radiated emissions measured in frequency range from 9k~10th harmonic (ex. 5GHz) were made with an instrument using Peak detector mode.
3. Data of measurement within this frequency range shown "---" in the table above means the reading of emissions are attenuated more than 20dB below the permissible limits or the field strength is too small to be measured.
4. Average value=peak reading level - average factor.

### 5.3. 20dB Bandwidth Emissions

FCC 15.231 (c)

#### 5.3.1. Limit

The bandwidth of the emission shall be no wider than 0.25% of the center frequency for devices operating above 70 MHz and below 900 MHz. Bandwidth is determined at the points 20 dB down from the modulated carrier.

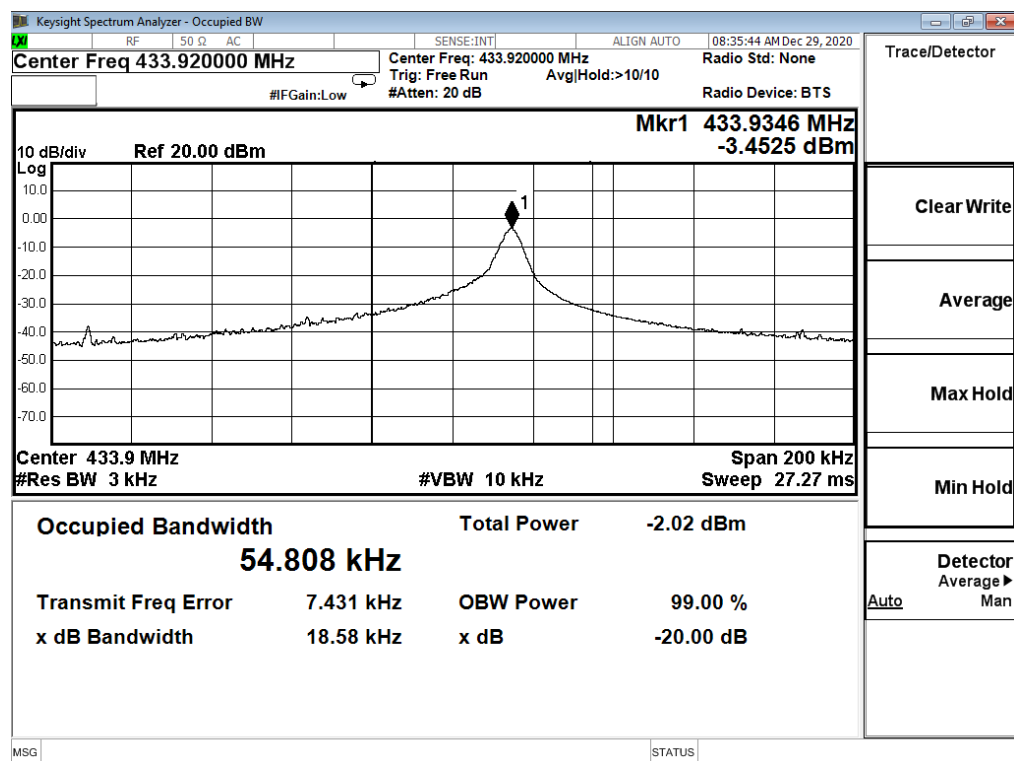
#### 5.3.2. Test Procedure

With the EUT's antenna attached, the EUT's 20dB Bandwidth power was received by the test antenna which was connected to the spectrum analyzer with the START and STOP frequencies set to the EUT's operation band.

#### 5.3.3. Test Data

Temperature	24.6°C	Humidity	54.1%
Test Engineer	Jay Li	Configurations	TX Mode

Center Frequency of operation MHz	Maximum allowed bandwidth kHz	Measured 20dB bandwidth kHz	Result
433.92	1084.8	18.58	PASS
Maximum allowed bandwidth:	<input checked="" type="checkbox"/> 0.25% of the centre operating frequency <input type="checkbox"/> 0.5% of the centre operating frequency		
RBW:	<input type="checkbox"/> 10kHz <input type="checkbox"/> 100kHz <input checked="" type="checkbox"/> other kHz		
VBW:	<input type="checkbox"/> 30kHz <input type="checkbox"/> 300kHz <input checked="" type="checkbox"/> other kHz		



## 5.4. Duty cycle

### 5.4.1. Limit

No dedicated limit specified in the Rules.

### 5.4.2. Test Procedure

5.4.2.1. Place the EUT on the table and set it in transmitting mode.

5.4.2.2. Remove the antenna from the EUT and then connect a low loss RF cable from the antenna port to the spectrum analyzer.

5.4.2.3. Set centre frequency of spectrum analyzer=operating frequency.

5.4.2.4. Set the spectrum analyzer as RBW=100 kHz, VBW=300 KHz, Span=0Hz, Adjust Sweep=100ms.

5.4.2.5. Repeat above procedures until all frequency measured was complete.

### 5.4.3. Test Data

$T_{on} = 0.36 \times 32 + 1.08 \times 18 = 30.96 \text{ (ms)}$

$T_p = 100 \text{ (ms)}$

The duty cycle  $= 30.96 / 100 \times 100\% = 30.96\%$

Average Correction Factory  $= 20 \log (T_{on}/T_p) = 20 \log (30.96/100) = -10.18 \text{ dB}$

Note: The signal bandwidth was measured and less than 100kHz RBW, so PDCF factor is not required to correct the fundamental signal peak result.

### Test plot of Duty cycle

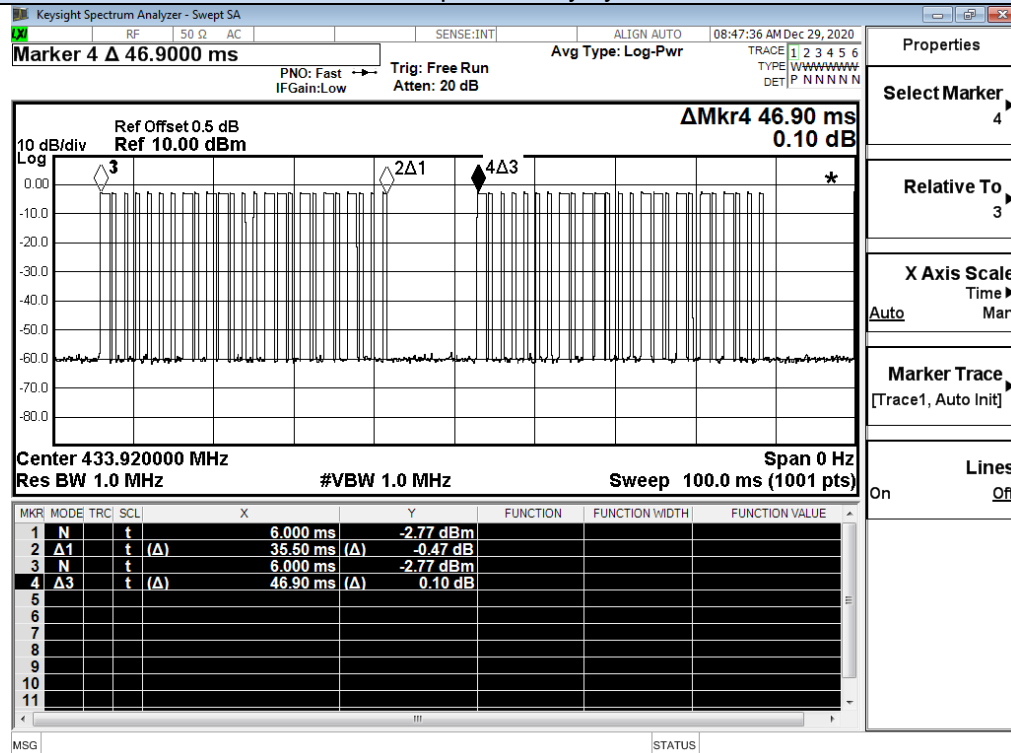


Fig.1

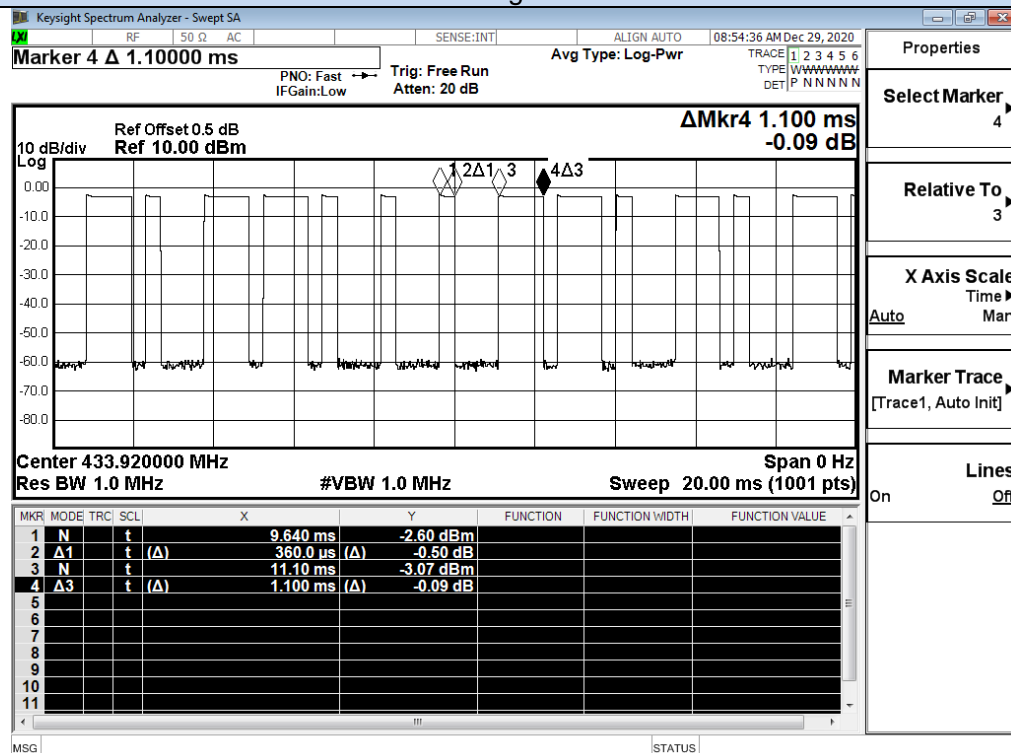


Fig.2



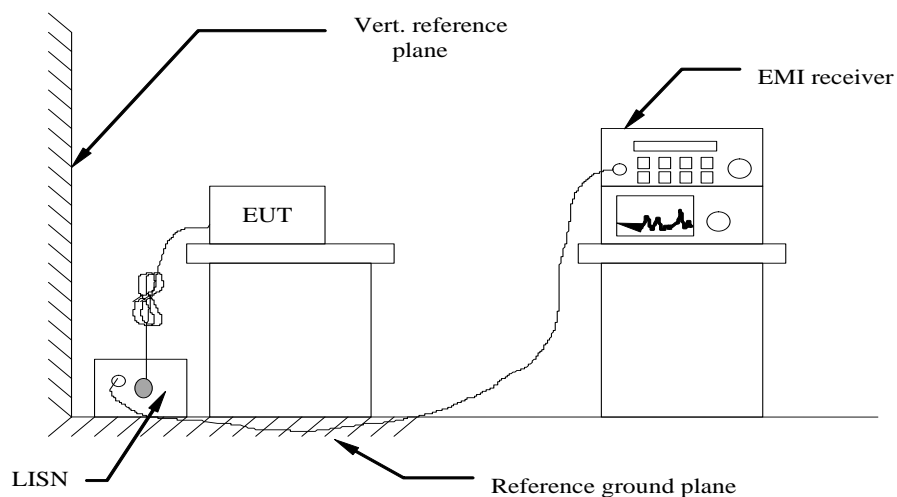
## 5.5. Power line conducted emissions

### 5.5.1 Standard Applicable

According to §15.207 (a): For an intentional radiator which is designed to be connected to the public utility (AC) power line, the radio frequency voltage that is conducted back onto the AC power line on any frequency or frequencies within the band 150 kHz to 30 MHz shall not exceed 250 microvolts (The limit decreases linearly with the logarithm of the frequency in the range 0.15 MHz to 0.50 MHz). The limits at specific frequency range is listed as follows:

Frequency Range (MHz)	Limits (dB $\mu$ V)	
	Quasi-peak	Average
0.15 to 0.50	66 to 56	56 to 46
0.50 to 5	56	46
5 to 30	60	50

### 5.5.2 Block Diagram of Test Setup



### 5.5.3 Test Results

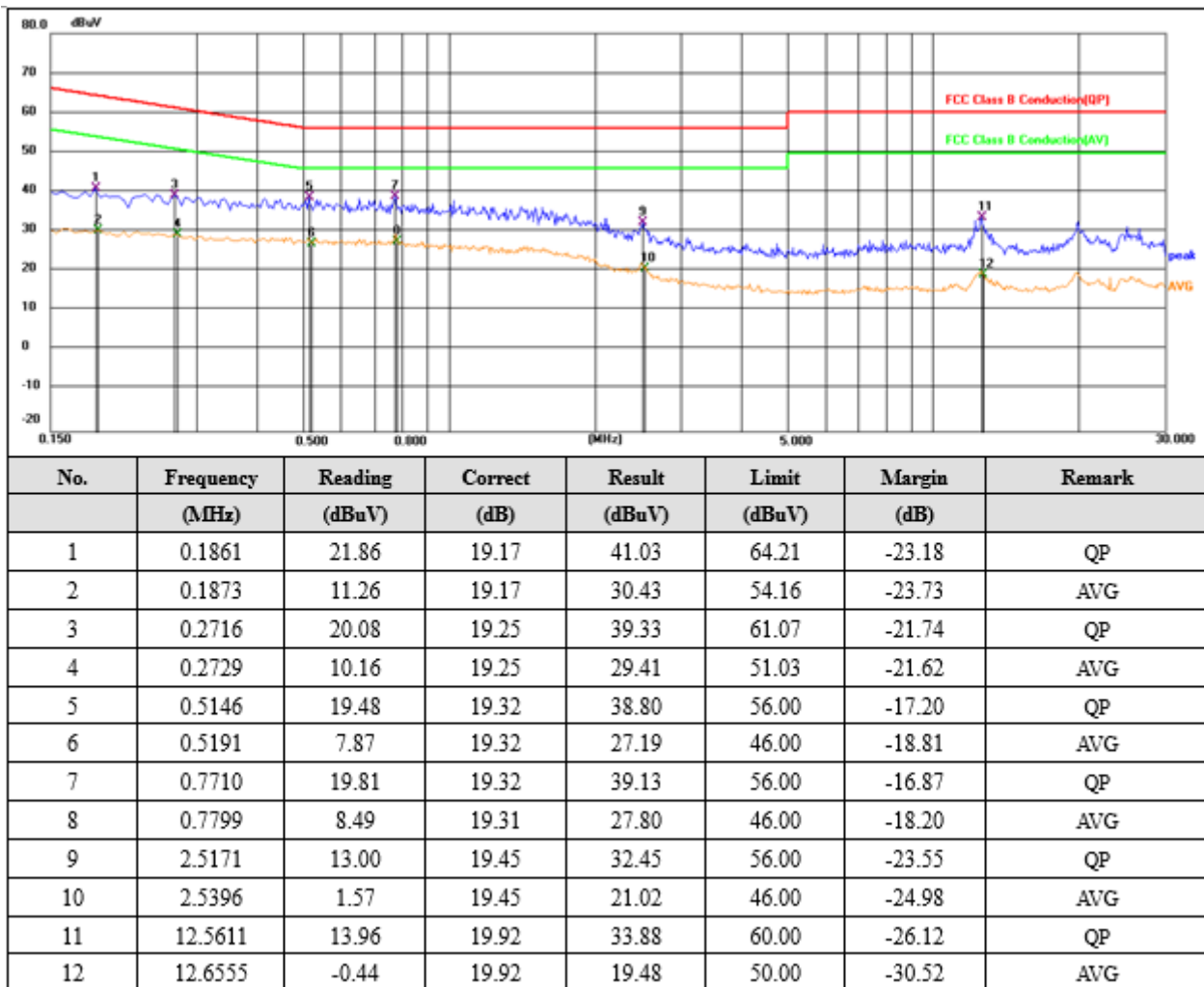
**PASS.**

The test data please refer to following page.

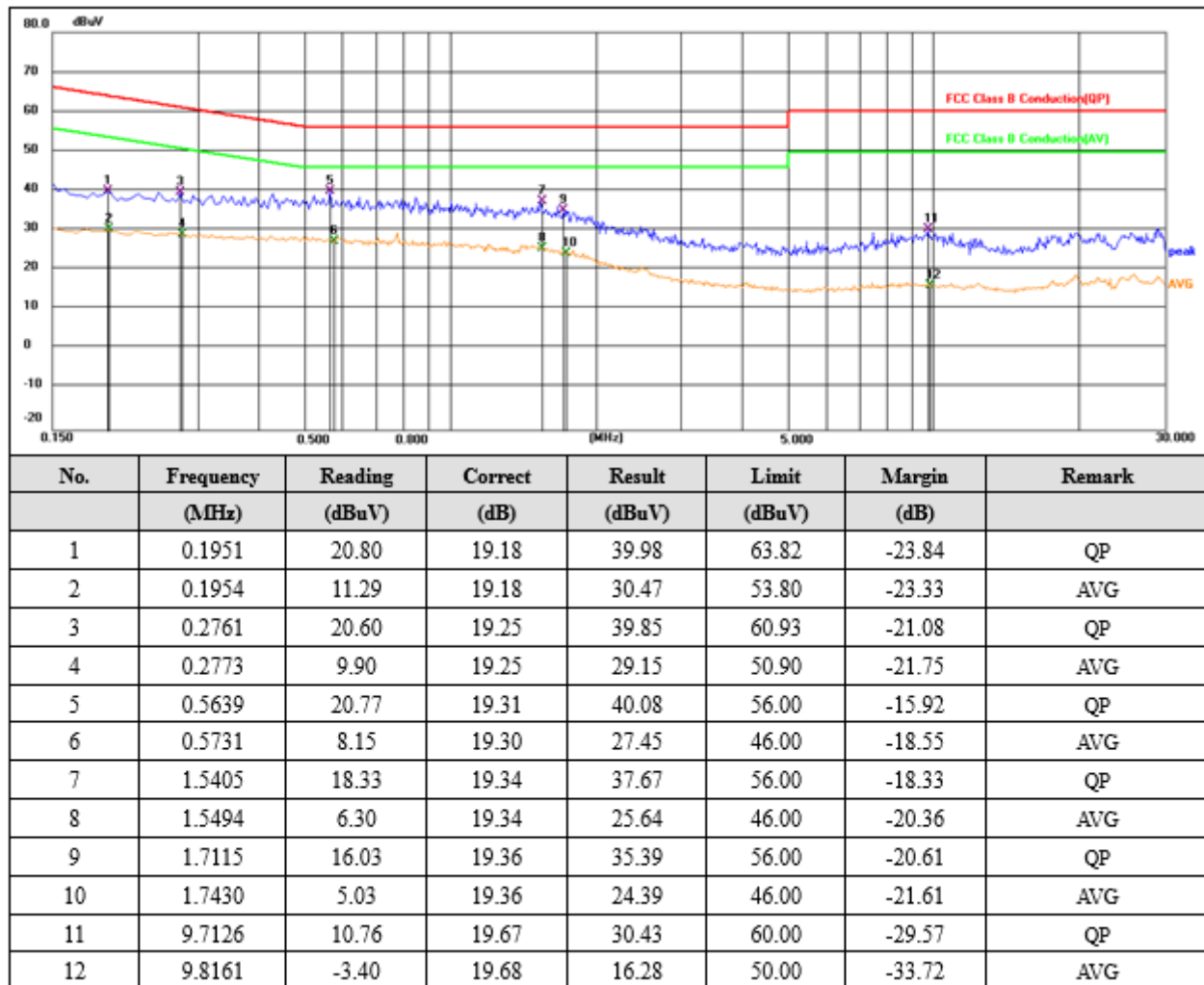
Temperature	23.3°C	Humidity	53.7%
Test Engineer	Jay Li	Configurations	TX Mode

**AC Conducted Emission of PC mode @ AC 120V/60Hz**

Line



## Neutral



\*\*\*Note: Pre-scan all modes and recorded the worst case results in this report.

## 5.6. Antenna Requirement

FCC 15.203

### 5.6.1. Standard Applicable

An intentional radiator shall be designed to ensure that no antenna other than that furnished by the responsible party shall be used with the device. The use of a permanently attached antenna or of an antenna that uses a unique coupling to the intentional radiator shall be considered sufficient to comply with the provisions of this section.

This EUT uses an integral antenna which is permanently attached.

### 5.6.2. Result

Compliant

The antenna used for transmitting is PCB antenna which is permanently attached to the PCB and no consideration of replacement. Please see EUT photo for details.

## 6. LIST OF MEASURING EQUIPMENTS

Item	Equipment	Manufacturer	Model No.	Serial No.	Cal Date	Due Date
1	Power Meter	R&S	NRVS	100444	2020-06-22	2021-06-21
2	Power Sensor	R&S	NRV-Z81	100458	2020-06-22	2021-06-21
3	Power Sensor	R&S	NRV-Z32	10057	2020-06-22	2021-06-21
4	Test Software	Tonscend	JS1120-2	/	N/A	N/A
5	RF Control Unit	Tonscend	JS0806-2	N/A	2020-06-22	2021-06-21
6	MXA Signal Analyzer	Agilent	N9020A	MY50510140	2020-11-21	2021-11-20
7	DC Power Supply	Agilent	E3642A	N/A	2020-11-13	2021-11-12
8	EMI Test Software	AUDIX	E3	/	N/A	N/A
9	3m Anechoic Chamber	SIDT FRANKONIA	SAC-3M	03CH03-HY	2020-06-22	2021-06-21
10	Positioning Controller	MF	MF7082	MF78020803	2020-06-22	2021-06-21
11	Active Loop Antenna	SCHWARZBECK	FMZB 1519B	00005	2018-07-26	2021-07-25
12	By-log Antenna	SCHWARZBECK	VULB9163	9163-470	2018-07-26	2021-07-25
13	Horn Antenna	SCHWARZBECK	BBHA 9120D	9120D-1925	2018-07-02	2021-07-01
14	Broadband Horn Antenna	SCHWARZBECK	BBHA 9170	791	2020-09-20	2021-09-19
15	Broadband Preamplifier	SCHWARZBECK	BBV9745	9719-025	2020-06-22	2021-06-21
16	EMI Test Receiver	R&S	ESR 7	101181	2020-06-22	2021-06-21
17	RS SPECTRUM ANALYZER	R&S	FSP40	100503	2020-11-13	2021-11-12
18	Broadband Preamplifier	/	BP-01M18G	P190501	2020-06-22	2021-06-21
19	RF Cable-R03m	Jye Bao	RG142	CB021	2020-06-22	2021-06-21
20	RF Cable-HIGH	SUHNER	SUCOFLEX 106	03CH03-HY	2020-06-22	2021-06-21
21	6dB Attenuator	/	100W/6dB	1172040	2020-06-22	2021-06-21
22	3dB Attenuator	/	2N-3dB	/	2020-06-22	2021-06-21
23	EMI Test Receiver	R&S	ESPI	101840	2020-06-22	2021-06-21
24	Artificial Mains	R&S	ENV216	101288	2020-06-22	2021-06-21
25	10dB Attenuator	SCHWARZBECK	MTS-IMP-136	261115-001-0032	2020-06-22	2021-06-21

Note: All equipment is calibrated through CHINA CEPREI LABORATORY and GUANGZHOU LISAI CALIBRATION AND TEST CO., LTD.

## **7. TEST SETUP PHOTOGRAPHS**

### **Radiated Emissions**



**Fig.1**



**Fig.2**

## **Conducted Emissions**





## 8. EXTERIOR PHOTOGRAPHS OF THE EUT

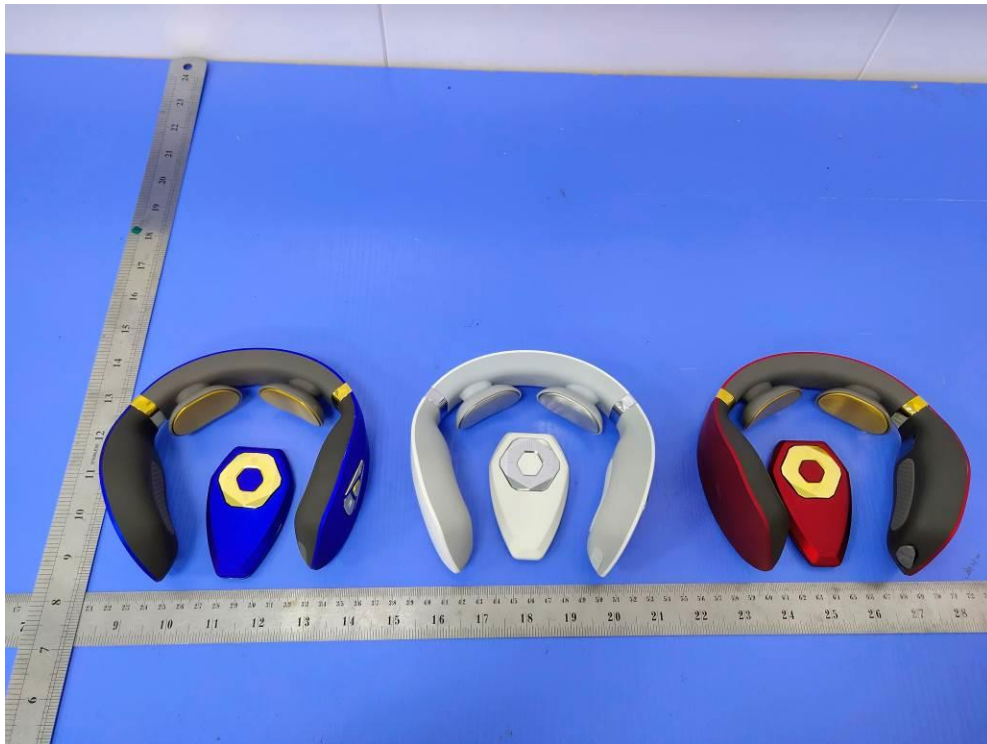


Fig.1

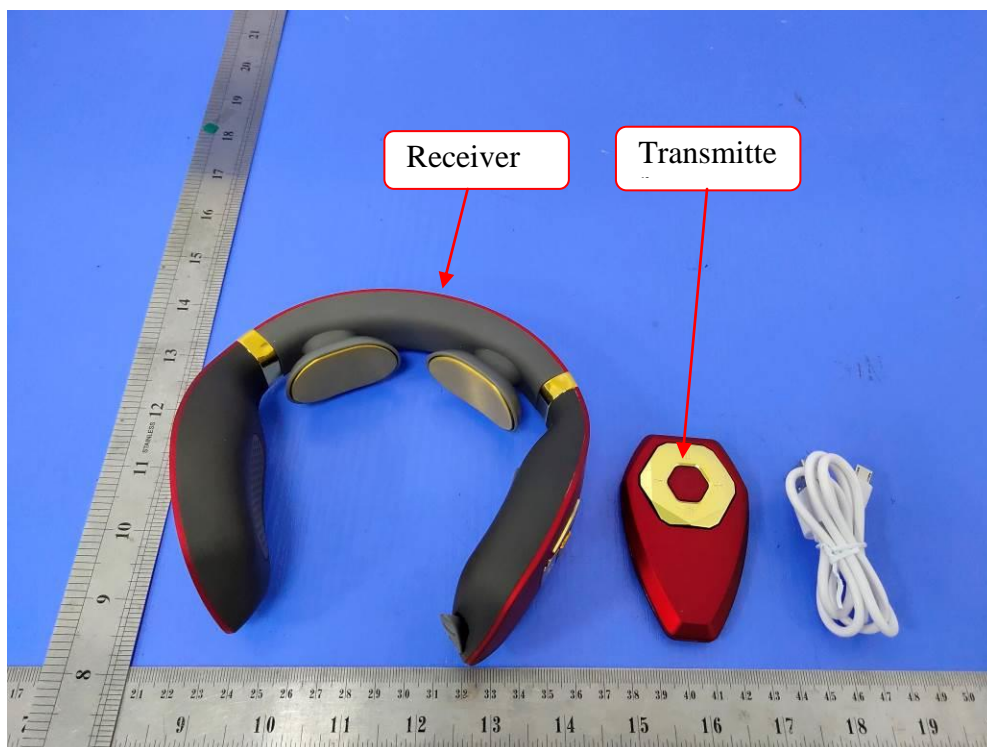


Fig.2





Fig.3



Fig.4



Fig.5



Fig.6



Fig.7



Fig.8



## 9. INTERIOR PHOTOGRAPHS OF THE EUT

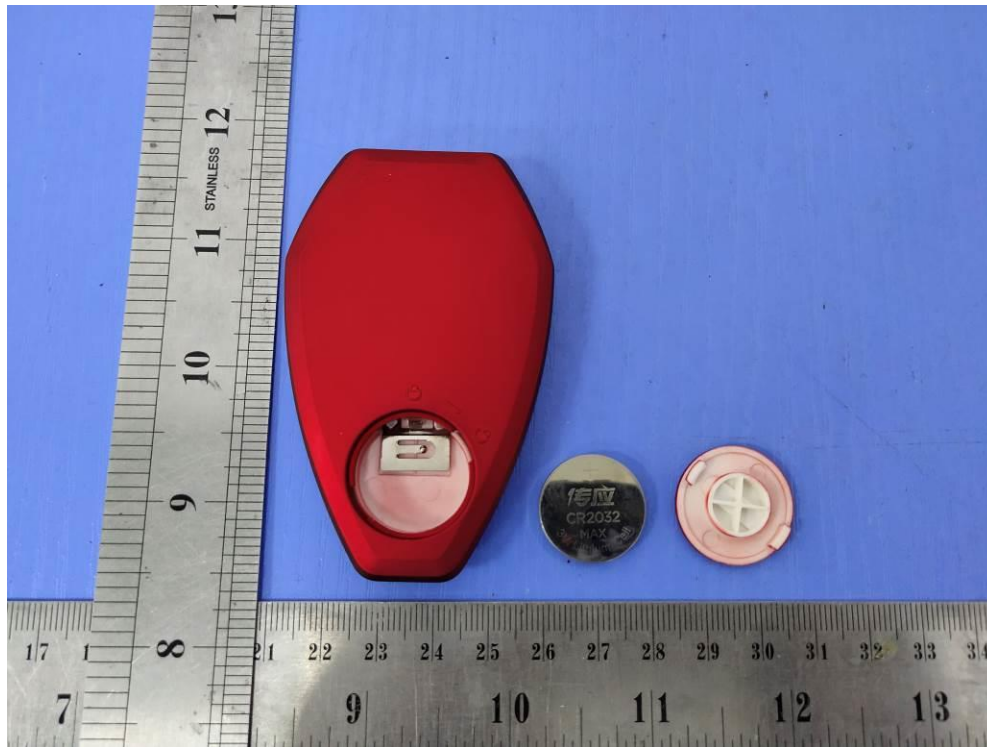


Fig.1

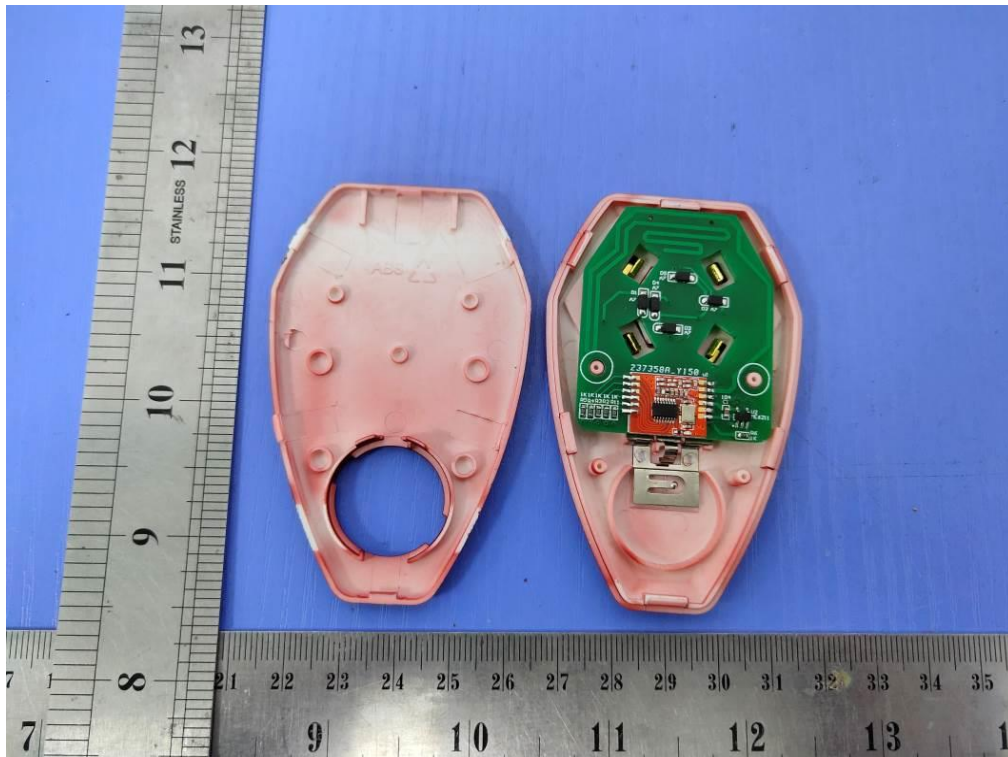


Fig.2

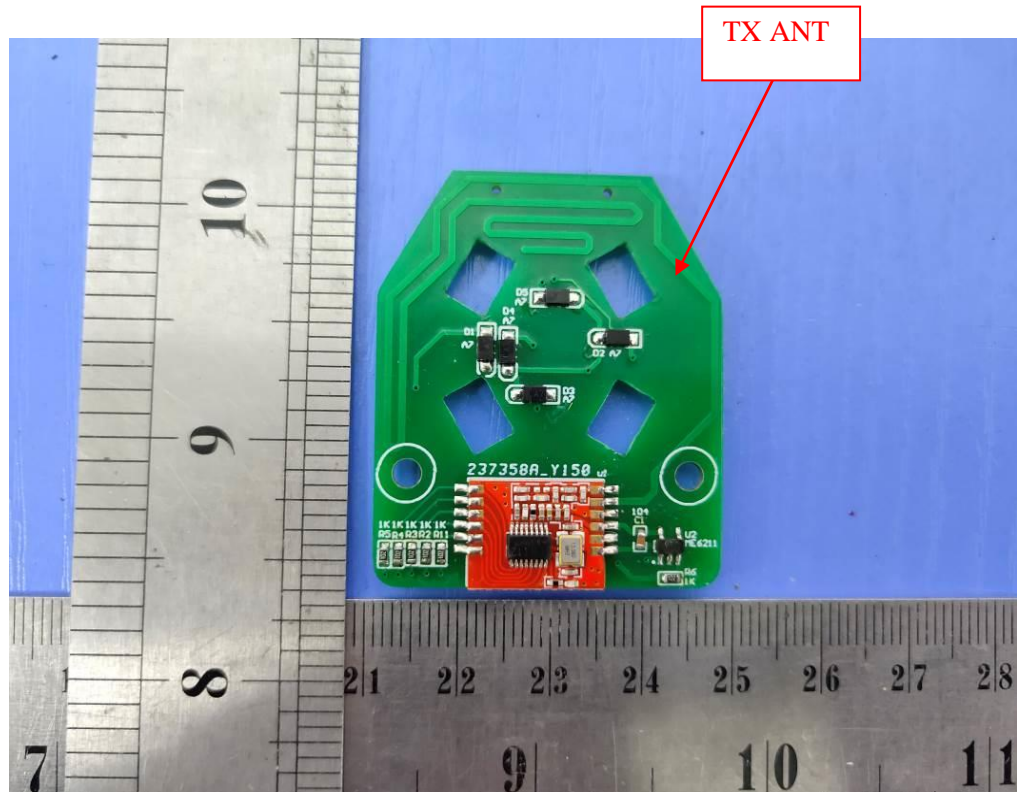


Fig.3

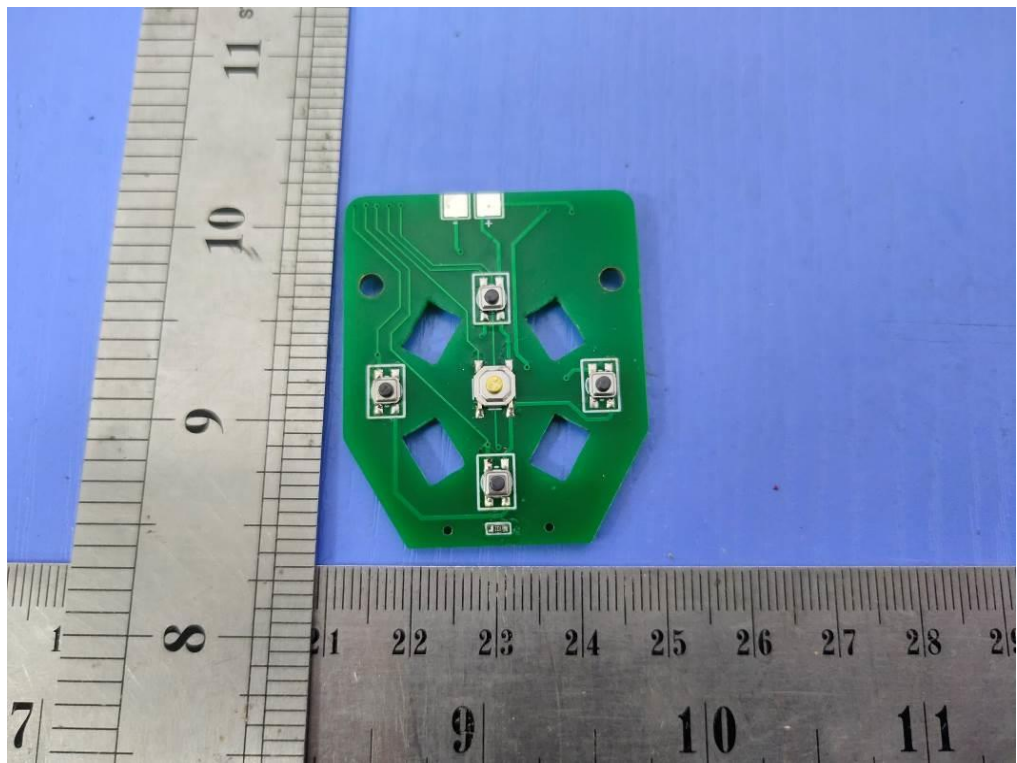


Fig.4

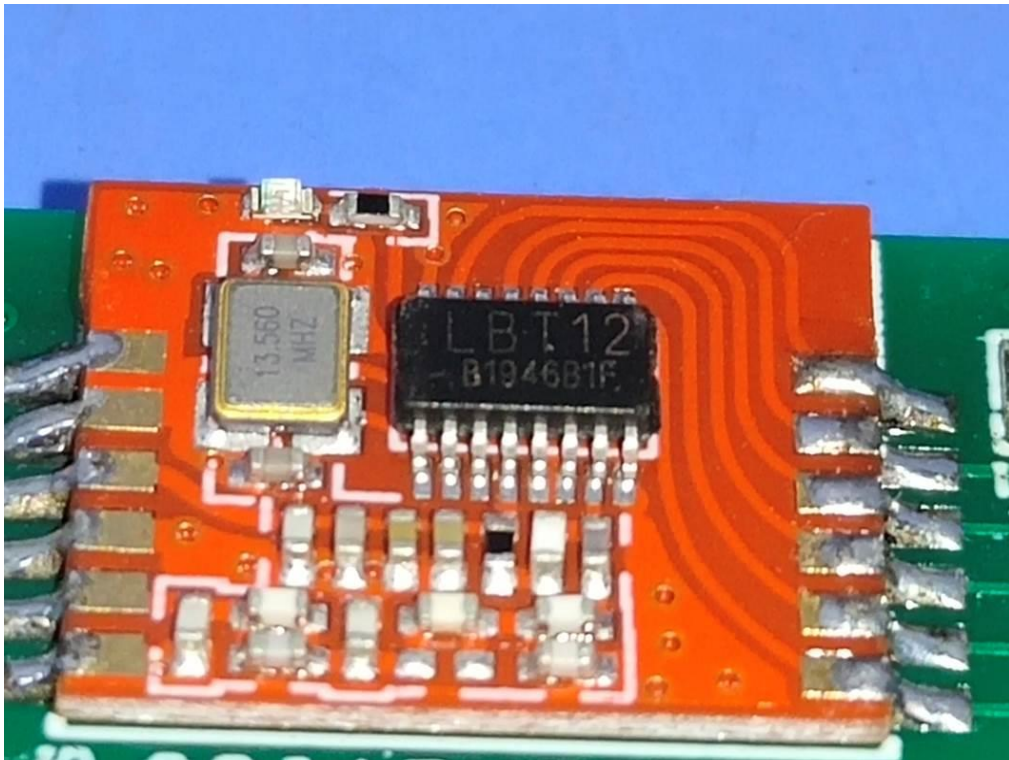


Fig.5



Fig.6

-----THE END OF TEST REPORT-----