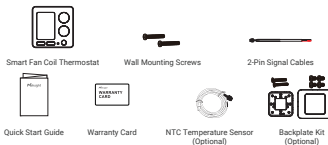


QUICK START GUIDE

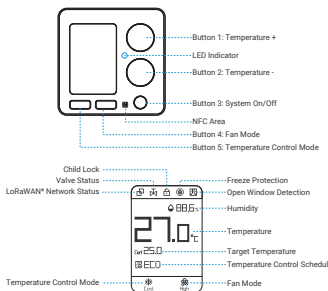
Smart Fan Coil Thermostat
WT303 Series&WT304 Series



1. Packing List



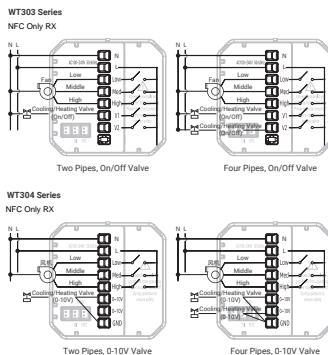
2. Hardware Introduction



3. LED Indicator

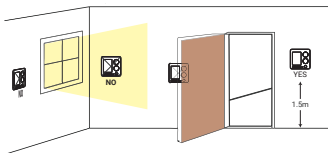
Function	Operation	LED Indicator
Reboot	Press and hold the button 3 and button 5 for more than 3s.	Slowly Blinks
Reset to Factory Default	Press and hold the button 3 and button 5 for more than 10s.	Quickly Blinks

4. Wirings



5. Installation

Installation Locations
When using the built-in temperature sensor, please install the device in a well-ventilated location that accurately reflects the average indoor temperature, approximately 1.5 meters above the ground.
Note: If installation in an appropriate location is not possible, an external temperature sensor should be connected, or data from an external temperature sensor should be used to ensure accurate control.

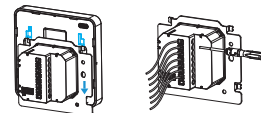


- It is not recommended to install the device in the following locations:
- Areas where temperature control is unnecessary;
 - Regions exposed to direct sunlight;
 - Areas near cold sources, heat sources, air vents, chimneys, or pipes;
 - Hidden areas such as doorways or corners;
 - Locations behind metal objects or large obstacles that may interfere with wireless signal transmission, such as refrigerators or air conditioning units;
 - Places with significant electromagnetic interference;
 - Locations subject to strong vibrations or physical impact.

Wall Mounting

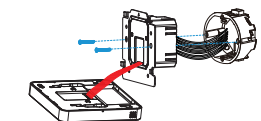
Applicable: standard 86mm pattress box or European 60mm pattress box.
Step 1: Ensure the circuit is shut off before installation.

Step 2:

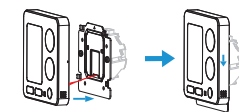


Note: Unused cables must be insulated and secured.

Step 3: Fix device to pattress box



Step 4:

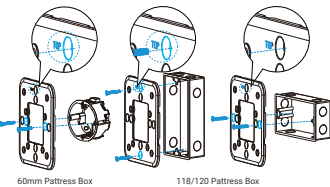


Backplate Installation

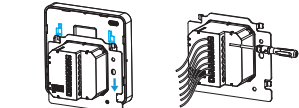
Applicable: standard 86mm pattress box, European 60mm pattress box, 118/120mm pattress box.

Step 1: Ensure the circuit is shut off before installation.

Step 2: Fix backplate to pattress box

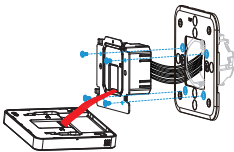


Step 3:

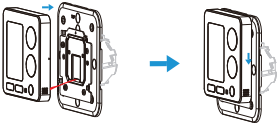


Note: Unused cables must be insulated and secured.

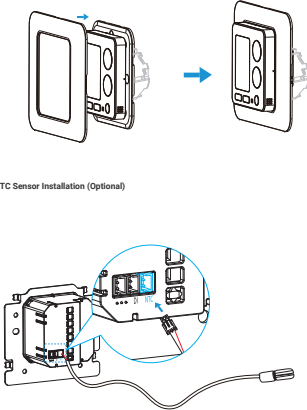
Step 4:



Step 5:



NTC Sensor Installation (Optional)



6. Configuration

1. Power on the WT30x device via USB Type-C port or AC power supply.
2. Download "Milesight ToolBox App" on an NFC-supported smartphone.



Android



iOS

3. Launch "Milesight ToolBox App", select reading mode as NFC and attach the NFC area of smartphone to the read and write the device. It's suggested to change a device password for security. (Default password: 123456)



7. Safety Precautions

- Please confirm that this product is suitable for your heating equipment before installation;
- The installation must be conducted by qualified person and should strictly comply with the electrical regulations of the local region;
- The device is intended only for indoor use. Do not place device outdoors where the temperature or humidity is below/over the operating range;
- In order to get the best transmission, ensure the device is within the signal range of the LoRaWAN® gateway and avoid the obstacles or metal object;
- Before installation or maintenance, please make sure to keep the power off;
- Please strictly follow the wiring diagram for wiring installation;
- Installation to the wall, please confirm that the fasteners are suitable for this product;
- Do not pull the cable too hard, otherwise the product will be damaged;
- If a hard plastic wire is used in the installation process, it must be bent to an appropriate angle in advance;
- Do not leave any object inside the device when installation;
- Please contact the after-sales service for equipment failure, please do not try to repair it yourself;
- After installation, please refer to this manual to check again to ensure normal and safe use, and keep this manual properly.

8. FCC Statement

Any changes or modifications not expressly approved by the party responsible for compliance could void the user's authority to operate the equipment.

This device complies with part 15 of the FCC Rules. Operation is subject to the following two conditions:

- (1) This device may not cause harmful interference, and.
- (2) This device must accept any interference received, including interference that may cause undesired operation.

Note: This equipment has been tested and found to comply with the limits for a Class B digital device, pursuant to part 15 of the FCC Rules. These limits are designed to provide reasonable protection against harmful interference in a residential installation. This equipment generates, uses and can radiate radio frequency energy and, if not installed and used in accordance with the instructions, may cause harmful interference to radio communications.

However, there is no guarantee that interference will not occur in a particular installation. If this equipment does cause harmful interference to radio or television reception, which can be determined by turning the equipment off and on, the user is encouraged to try to correct the interference by one or more of the following measures:

—Reorient or relocate the receiving antenna.

—Increase the separation between the equipment and receiver.

—Connect the equipment into an outlet on a circuit different from that to which the receiver is connected.

—Consult the dealer or an experienced radio/TV technician for help.

FCC Radiation Exposure Statement:

This equipment complies with FCC radiation exposure limits set forth for an uncontrolled environment. This equipment should be installed and operated with minimum distance 20cm between the radiator& your body. This transmitter must not be co-located or operating in conjunction with any other antenna or transmitter.