



# QUICK START GUIDE

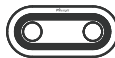
AI STEREO VISION PEOPLE COUNTER



Optional

VS125

## 1. Packing List



1 x VS125 Device



1 x Quick Start Guide

### Cellular Version Only Accessories



1 x Power Adapter

### PoE Version Only Accessories



1 x Power Adapter (Optional)



4 x Ceiling Mounting Kits



1 x Warranty Card



1 x SIM-eject Tool



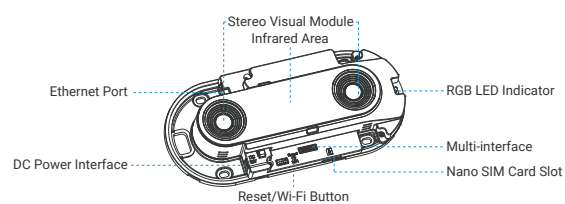
1 x Multi-interface Cable



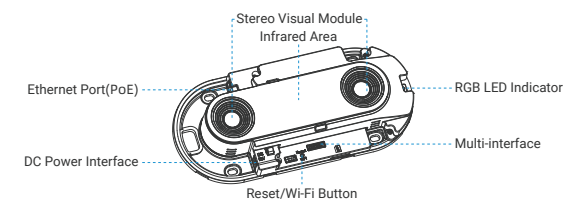
1 x VB01 Multifunctional Bracket Kit (Optional)

## 2. Hardware Overview

Cellular Version:



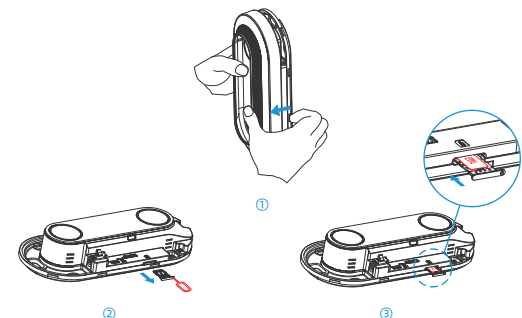
PoE Version:



## 3. Button Descriptions

Function	Action	LED Indicator
Turn On/Off Wi-Fi	Press and hold the power button for more than 3 seconds	Turn On/Off: Blue light blinks for 3 seconds Wi-Fi On: Blue light on Wi-Fi Off: Green light on
Reset to Factory Default	Press and hold the power button for more than 10 seconds	Green light blinks until the reset process is completed

## 4. SIM Card Installation (Cellular Version Only)



## 5. Power Supply

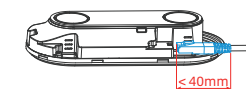
• Powered by DC Power Adapter (12V, 2A)



• Powered by PoE Switch (PoE version only, 802.3af standard)



**Note:** Ensure the length of the Ethernet Cable crystal head is less than 40mm.

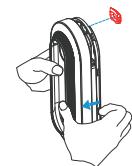


## 6. Installation

Ceiling Mount

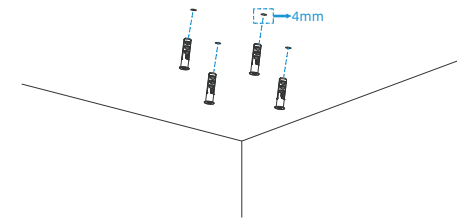
Installation Conditions: ceiling thickness > 30mm

Step1:



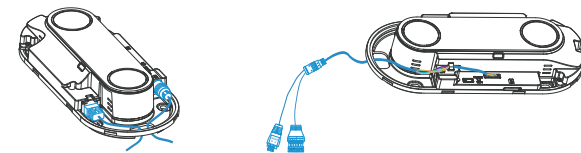
**Note:** Remove the blocking rubber if the wires need to be protruded from the side of the device.

Step2:



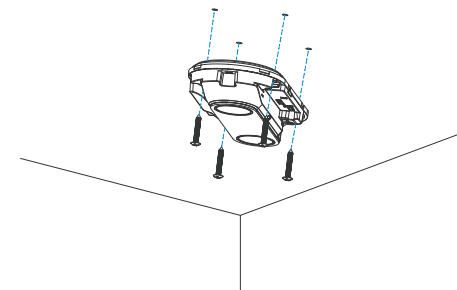
**Note:** If you need to hide the power cord into the ceiling, drill another wire hole.

Step3:



**Note:** if the alarm I/O is going to be used, please connect the Multi-interface to the device.

Step4:



Milesight



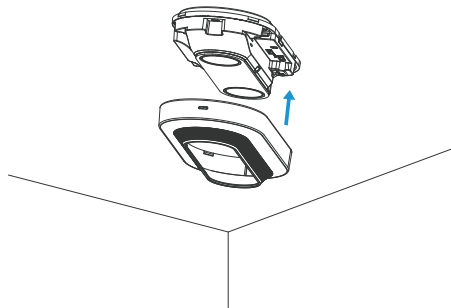
Quick Start Guide

All software & files can be downloaded from  
<https://www.milesight.com/iot/resources/download-center/#documents>

Make Sensing Matter

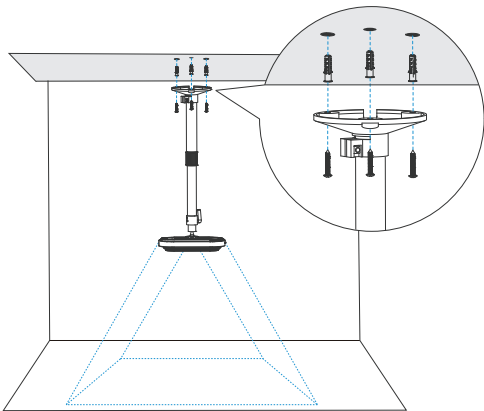
Milesight IoT Co., Ltd. | [www.milesight.com](http://www.milesight.com)

Step5:

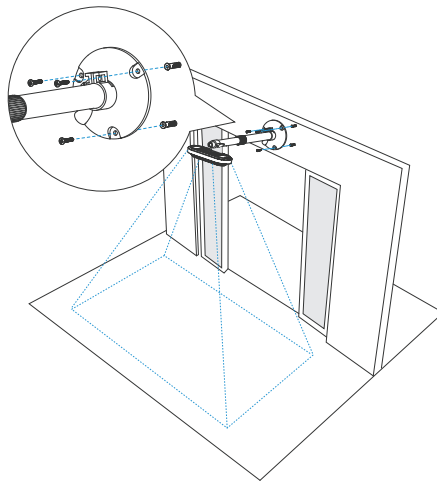


Ceiling/Lintel Mount (with Optional VB01 Multifunctional Bracket)

• Ceiling Mount



• Lintel Mount



Installation Note:

- Make sure there are no obstacles within the live view of device.
- When the device is installed on the door frame or door, it is recommended to use VB01 or other bracket to make the device is above 30cm from the door with enough time to capture the target.
- When the device is installed at the door of the fan switch, the equipment needs to be installed on the opposite side of the door.
- For more accurate target attribute detection, tilt the device slightly (within 10 degrees)

- When using Multi-device stitching, devices should be installed next to each other and ensure the detection areas are tangent or overlapping.

## 7. Access the Web GUI

VS125 provides user-friendly web GUI for configuration access via Wi-Fi or Ethernet port. Users need to customize the password when using the device for the first time. The default settings are as below:

Wi-Fi SSID: **People Counter\_xxxxxx** (can be found on the device label)

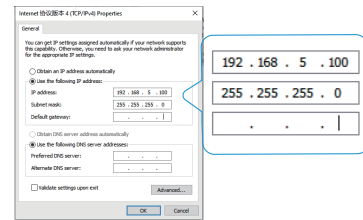
Wi-Fi IP: **192.168.1.1**

Ethernet IP: **192.168.5.220 (PoE Version Only)**

Here are 2 ways of accessing the web GUI:

**Wireless Method:** Enable the Wireless Network Connection on your computer, search for corresponding Wi-Fi SSID to connect it, then type 192.168.1.1 to access the web GUI.

**Wired Method:** Connect the device to computer via Ethernet port, assign the IP address of computer to 192.168.5.xxx manually, then type 192.168.5.220 to access the web GUI.



## 8. FCC Statement

Any changes or modifications not expressly approved by the party responsible for compliance could void the user's authority to operate the equipment. This device complies with part 15 of the FCC Rules. Operation is subject to the following two conditions:

- (1) This device may not cause harmful interference, and.
- (2) This device must accept any interference received, including interference that may cause undesired operation.

**Note:** This equipment has been tested and found to comply with the limits for a Class B digital device, pursuant to part 15 of the FCC Rules. These limits are designed to provide reasonable protection against harmful interference in a residential installation. This equipment generates, uses and can radiate radio frequency energy and, if not installed and used in accordance with the instructions, may cause harmful interference to radio communications. However, there is no guarantee that interference will not occur in a particular installation. If this equipment does cause harmful interference to radio or television reception, which can be determined by turning the equipment off and on, the user is encouraged to try to correct the interference by one or more of the following measures:

- Reorient or relocate the receiving antenna.
- Increase the separation between the equipment and receiver.
- Connect the equipment into an outlet on a circuit different from that to which the receiver is connected.
- Consult the dealer or an experienced radio/TV technician for help.

### FCC Radiation Exposure Statement:

This equipment complies with FCC radiation exposure limits set forth for an uncontrolled environment. This equipment should be installed and operated with minimum distance 20cm between the radiator & your body. This transmitter must not be co-located or operating in conjunction with any other antenna or transmitter.