

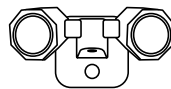
Quick Start Guide

Apply to: Reolink Floodlight WiFi

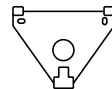
Content

What's in the Box	2
Floodlight Introduction	3
Set up the Floodlight	5
Install the Floodlight	6
Troubleshooting	8
Specification	8
Notification of	8
Compliance	8

What's in the Box



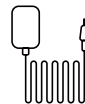
Floodlight



Mounting Plate



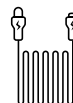
Mounting Hole
Template



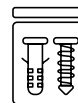
Power Adapter *



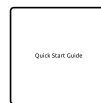
1m
Ethernet Cable



4.5m Power *
Extension Cable



Pack of Screws



Quick Start Guide

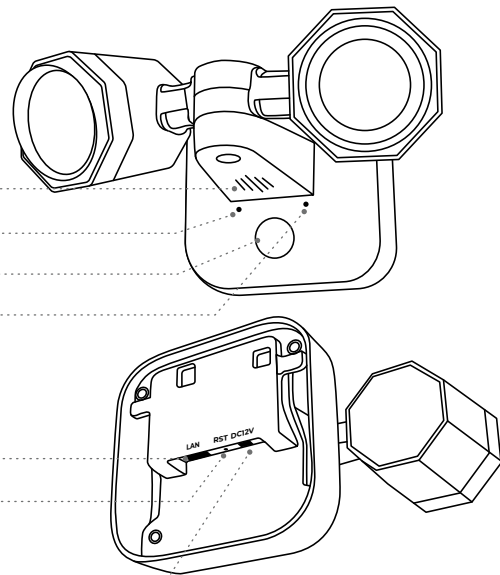
NOTE:

* The power adapter and 4.5m Power Extension Cable only come with WiFi Version.

* Quantity of accessories varies with the product model you purchase.

Floodlight Introduction

WiFi Version



Speaker

Daylight Sensor

PIR Sensor

Status LED

LAN Port

Reset Button

* Press the reset button with a pin to restore factory settings.

Power Port

Set up the Floodlight

Download and launch the Reolink App or Client software, and follow the onscreen instructions to finish initial setup.

• On Smartphone

Scan to download the Reolink App.



• On PC

Download path of the Reolink Client: Go to <https://reolink.com> > Support > App & Client.

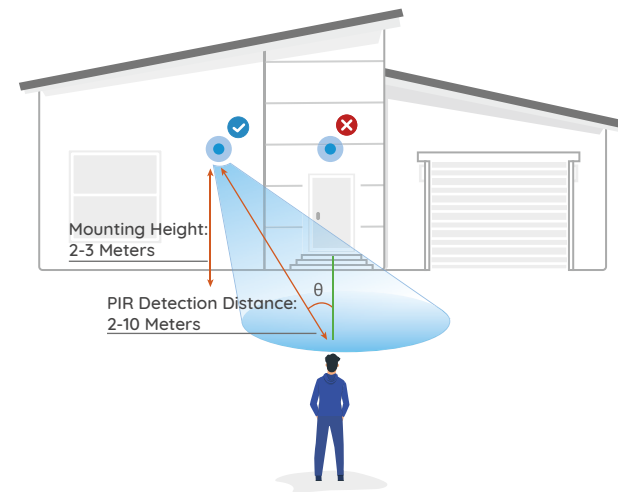
NOTE:

- When setting up the WiFi Floodlight, you need to follow the onscreen instructions to finish the WiFi configuration first.
- If you are connecting the Floodlight to a Reolink NVR, please set up the Floodlight via the NVR interface.

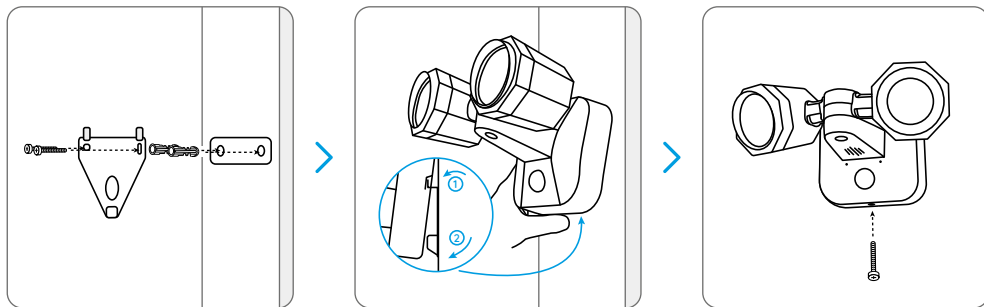
Install the Floodlight

- Install the Floodlight 2-3 meters (7-10 ft) above the ground. This height maximizes the detection range of the PIR motion sensor.
- For better motion detection performance, please install the floodlight angularly.

NOTE: If a moving object approaches the PIR sensor vertically, the floodlight may fail to detect motion.



Mount the Floodlight to the Wall



1. Drill holes in accordance with the mounting template.
2. Secure the mounting plate to the wall with the upper two screws and hang the floodlight on it.
3. Then lock the floodlight in position with the lower screw.

Troubleshooting

Floodlight is not powering on

If your Floodlight is not powering on, please try the following solutions:

For WiFi Floodlight

- Plug the floodlight into a different outlet and see if it works.
- Power on the floodlight with another working 12V 2A DC adapter and see if it works.

If the problem is not solved, please contact Reolink Support.

Specification

Hardware Features

Light: 40pcs/18W
Dimension: 216X118X160mm
Weight: 635g
Working Temperature: -10°C~+55°C (14°F~131°F)

Notification of Compliance

FCC Compliance Statement

This device complies with Part 15 of the FCC Rules. Operation is subject to the following two conditions:

this device may not cause harmful interference, and this device must accept any

interference received, including interference that may cause undesired operation.

NOTE: This equipment has been tested and found to comply with the limits for a Class B digital device, pursuant to part 15 of the FCC Rules. These limits are designed to provide reasonable protection against harmful interference in a residential installation.

This equipment generates uses and can radiate radio frequency energy and, if not installed and used in accordance with the instructions, may cause harmful interference to radio communications. However, there is no guarantee that interference will not occur in a particular installation. If this equipment does cause harmful interference to radio or television reception, which can be determined by turning the equipment off and on, the user is encouraged to try to correct the interference by one or more of the following measures:

- Reorient or relocate the receiving antenna.
- Increase the separation between the equipment and receiver.
- Connect the equipment into an outlet on a

circuit different from that to which the receiver is connected.

- Consult the dealer or an experienced radio/TV technician for help.

Changes or modifications not expressly approved by the party responsible for compliance could void the user's authority to operate the equipment.

FCC RF Exposure Warning Statements

This equipment complies with FCC radiation exposure limits set forth for an uncontrolled environment. This equipment shall be installed and operated with minimum distance 20cm between the radiator & body.

Simplified EU Declaration of Conformity

Reolink declares that the WiFi floodlight is in compliance with the essential requirements and other relevant provisions of Directive

2014/53/EU, the floodlight is in compliance with Directive 2014/30/EU.



Correct Disposal of This Product

This marking indicates that this product should not be disposed with other household wastes throughout the EU. To prevent possible harm to the environment or human health from uncontrolled waste disposal, recycle it responsibly to promote the sustainable reuse of material resources. To return your used device, please use the return and collection systems or contact the retailer where the product was purchased. They can take this product for environmentally safe recycling.

Limited Warranty

This product comes with a 2-year limited warranty that is valid only if purchased from Reolink Official Store or a Reolink authorized reseller. Learn more: <https://reolink.com/warranty-and-return/>.

NOTE: We hope that you enjoy the new purchase. But if you are not satisfied with the product and plan to return, we strongly suggest that you reset the floodlight to factory default settings before returning.

Terms and Privacy

Use of the product is subject to your agreement to the Terms of Service and Privacy Policy at reolink.com. Keep out of reach of children.

End User License Agreement

By using the Product Software that is embedded on the Reolink product, you agree to the terms of this End User License Agreement ("EULA") between you and Reolink. Learn more: <https://reolink.com/eula/>.

ISED Statements

This device contains licence-exempt transmitter(s)/receiver(s) that comply with Innovation, Science and Economic

Development Canada's licence-exempt RSS(s).
Operation is subject to the following two conditions:

- (1) This device may not cause interference.
- (2) This device must accept any interference, including interference that may cause undesired operation of the device.

L'émetteur/récepteur exempt de licence contenu dans le présent appareil est conforme aux CNR d'Innovation, Sciences et Développement économique Canada applicables aux appareils radio exempts de licence. L'exploitation est autorisée aux deux conditions suivantes:

- (1) L'appareil ne doit pas produire de brouillage;
- (2) L'appareil doit accepter tout brouillage radioélectrique subi, même si le brouillage est susceptible d'en compromettre le fonctionnement.

Radio Frequency Exposure Statement for IC

The device has been evaluated to meet general RF exposure requirements. The device can be used in mobile exposure conditions. The min separation distance is 20cm.

Déclaration d'exposition aux radiofréquences pour IC
L'appareil a été évalué pour répondre aux exigences générales en matière d'exposition aux RF. L'appareil peut être utilisé dans des conditions d'exposition mobiles. La distance de séparation minimale est de 20cm.

OPERATING FREQUENCY (For WiFi Version) (the maximum transmitted power)

2412MHz --- 2462MHz

Technical Support

If you need any technical help, please visit our official support site and contact our support team before returning the products:
<https://support.reolink.com>.