
D50
Instruction Manual
Suction Bracket Type Car Digital Video Recorder (DVR)

Contents

I. Precautions.....	2
II. Warranty Items.....	2
III. Package Contents.....	3
IV. Appearance and Key Function Description.....	3
V. Screen Overview.....	5
VI. Installation Steps.....	6
VII. Basic Operations.....	7
VIII. Menu Setting	7
IX. Mobile APP Applications.....	11
X. Product Specifications.....	13
XI. FAQ	14

I. Precautions before Use

- 1) The function of the camera may be different from the instruction manual due to the difference of the software version, please consult with the real products.
- 2) Make sure that the camera has already been powered on, the memory card is CLSS10 32GB or above, has been formatted on the machine and can be used normally.
- 3) Do not repair the machine by yourself under any circumstances, so as not to cause human damage and affect the free warranty service.
- 4) Do not put the camera close to high-intensity magnetic objects, magnets and motors. In addition, it is also necessary to avoid putting the product close to objects emitting strong radio waves. Strong magnetic fields may cause product failures or destroy images and sound.
- 5) Do not place the camera where the temperature is high or with direct sunlight, but in a cool, dry and insulated place.
- 6) When charging, keep the product out of reach of children, or the power cord may cause accidental suffocation or electric shock to children.

II. Warranty Items

- 1) In order to maintain the product quality, please do not place the product in moist, immersed, or ultra-high temperature places. If the machine is damaged due to human negligence, self-disassembly, or improper use, the right to free maintenance shall be lost during the warranty term.
- 2) The company shall not be responsible for the maintenance of data of the product memory card. The memory card must be removed before the repair, otherwise, the company shall not be responsible for the loss of the data. Product maintenance after the warranty period shall be charged for maintenance cost.
- 3) The camera can only be used as an auxiliary tool. It can not guarantee driving safety or guarantee responsibility. The

driver should take the initiative to avoid danger in accord with the road conditions.

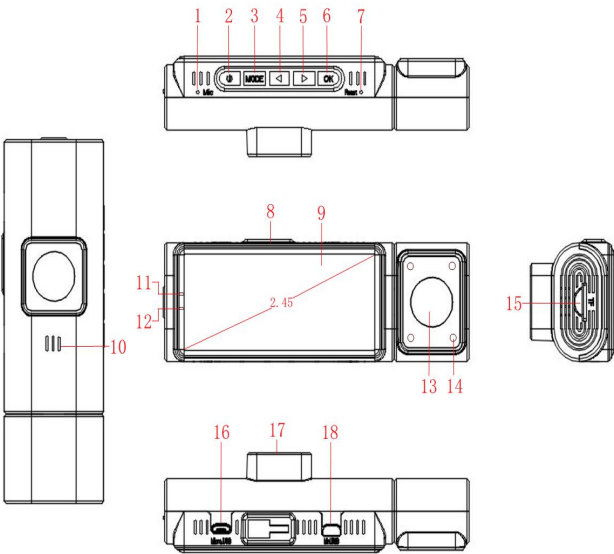
4) The camera is an electronic product. Things such as video recording interruption may occur to it due to parts failure, unstable memory card, power interruption during use, dropping off of the 3M bracket, etc. So it can not replace the insurance.

5) The video content recorded by the camera should be used for legal purposes and the company shall not provide any legal guarantee for the place and purpose of its use. The video recorded can also not be guaranteed to be valid evidence in law, but for reference only. The company only provides limited warranty liability for the camera product itself, and does not provide any warranty or compensation liability for any automobile part or person other than the product itself. The pasted bracket may fall off due to improper installation, long-term use or sun exposure, etc, so as to damage the product itself or the interior decoration. The company shall not be responsible for such damage, either. The installer should install the machine in order as far as possible. And the user should always check whether there is possibility for the driving camera to fall off and whether it works normally. If there is any abnormality, the installer should be immediately sought to deal with it before use.

III. Package Contents

Main engine, car charger, pull-back camera, pull-back extension cord, manual, warranty card, bracket

四、外观及按键功能描述 IV. Appearance and Key Function Description



NO	Name	Description
1	Microphone	to record video with clear audio
2	ON/OFF	Power on/off, turn on/off the display screen.
3	Menu	to enter the setting menu, exit the setting menu.
4	Up	to select upwards, record and capture pictures.。
5	Down	to select downwards, and switch PIP (Picture-in-picture) display.
6	OK	to confirm options, stop/start video recording, start/stop playing video files.
7	Reset	Press to force reset the device(when the device crashes, a short press can force the device to restart in the case of uninterrupted power supply)

8	Bracket socket	to install suction bracket
9	Display	2.45 inch TFT color LCD display.
10	Speaker	Button sound prompt, play video recording audio sound when playing video recorded
11	Red indicator light	When the machine is turned on, the long red light indicates that recording is stopped, and the flashing red light indicates that the machine is in recording state.
12	Blue indicator light	The long blue light means the machine is in standby
13	Rear lens	Built-in camera for video recording in the car.
14	Infrared LED lights	4 infrared LED lights to enhance the night vision effect in the car.
15	MicroSD slot	to provide extended storage (maximum support for FAT32 256GB U3 high-speed memory card)
16	Power port	USB port for charging.
17	Front lens	front camera, to record road events ahead.
18	External camera port	Used to connect the external rear camera.

4. 1. ON/OFF Power Switch

Function 1: Power ON/OFF function

In the case of external power supply, if the device is in shutdown state, the user can press and hold the **【ON/OFF】** of the recorder for 2-3 seconds. If the blue power indicator light is constant on, and the red indicator light is off, the machine can be turned on and the machine will automatically start working. In power-on state, if the user long presses on the **【ON/OFF】** and holds it for 2-3 seconds, the machine will automatically save the video files and user settings, and then shut down.

Function 2: turn off the screen/ turn on the screen

In standby mode or video mode, short press the **【ON/OFF】** and the user can turn off or turn on the screen.

4.2. Menu

Function 1: Lock key

In the video mode, short press the **【Menu】** key, and the current video file can be locked. (Note: the lock icon will be displayed at the top of the screen at the same time. The locked video will be saved as a special file, and it will not be overwritten by the loop.)

Function 2: Menu key

In standby mode, short press the **【Menu】** key, and the user can enter the setting menu and exit the setting menu.

4.3. Up

Function 1: Page up function

It is the page up function in the menu setting and playback mode.

Function 2: capture function

In standby mode or video mode, short press the **【Up】** key and the machine can take a picture and hold it.

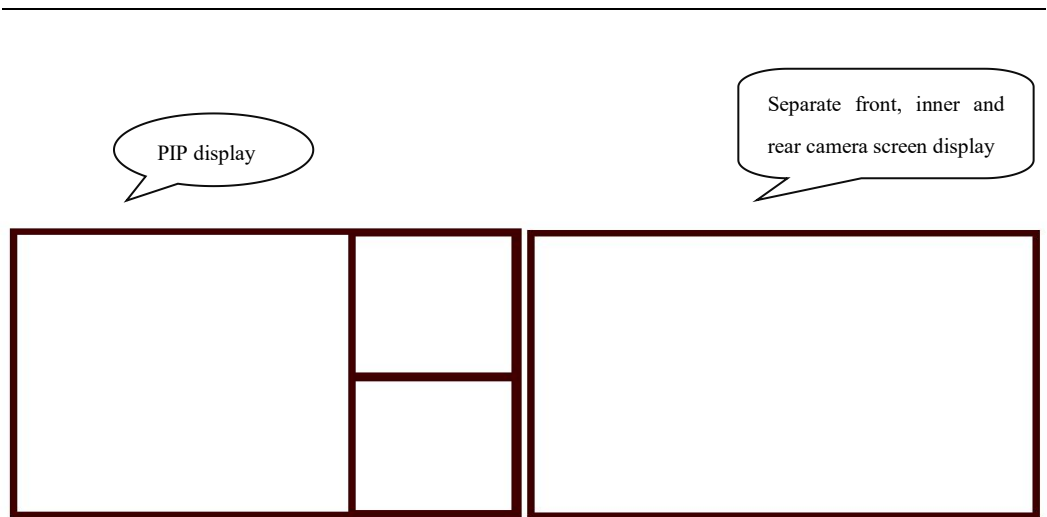
4.4 Down

Function 1: Page down function

It is the page down function in the menu setting and playback mode.

Function 2: PIP switching function

In standby mode or video mode, short press the **【Down】** key and the machine can switch between different PIP display screens. (As shown below)



V. Screen Overview



VI. Installation Steps

6.1 Install the memory card:

1) Please use genuine microSD memory cards ranging from 32GB to 256GB, with a speed of Class 10 or U3.

Carefully insert the memory card into the slot of the device until you hear a click sound. To remove the card, please turn off the power and turn off the device first, and then push the card into the slot until it clicks again.

2) Before using the card, please format it correctly according to the following steps: Press **【≡】** to enter Settings; If the device is recording video, please press **【OK】** which is the confirmation button to stop recording. Press **【▼】** to find the "Format" option, and then press **【OK】** for confirmation. Short press **【▼】** or **【▲】** to choose "yes" and then press **【OK】** to confirm formatting. (If a 64GB, 128GB, or 256GB microSD card is used, please format it as FAT32 on the device first. Please insert the card into the device. If "Memory Card Error" is displayed on the device, please press **【OK】** to record, and then press the **【≡】** button to enter the menu and **【▼】** button to choose to format the memory card. If you want to format it on your computer, please search online "How to format 64GB, 128GB, 256GB microSD card to FAT32.")

Note: 1. It is suggested that the MicroSD card be formatted every 2 weeks, so as to maximize the life of the memory card.

2. Do not remove the card when the device is recording, so as to prevent data loss/corruption.



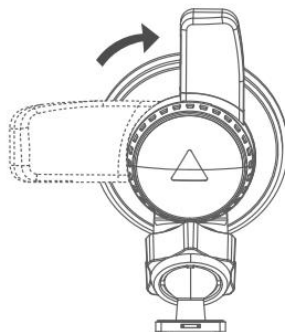
6.2 Install the device on the windscreen

1) Install the suction on the mounting connector of the camera and push it in until you hear a clicking sound.

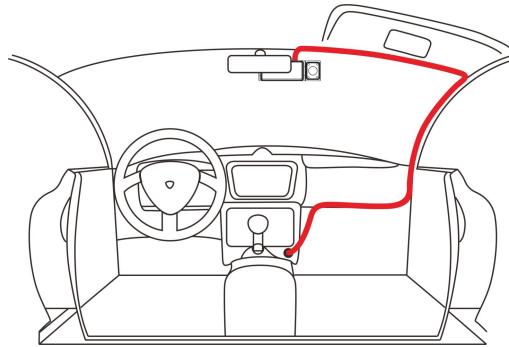
2) Use water or alcohol to wipe up the windscreen, and then wipe away the water with a cleaning cloth.

3) Wipe clean the suction mounting pad on the suction.

4) Fix the suction mounting pad on the windscreen, and rotate locking clip on the mounting seat upwards to 90° until you hear a clicking sound.

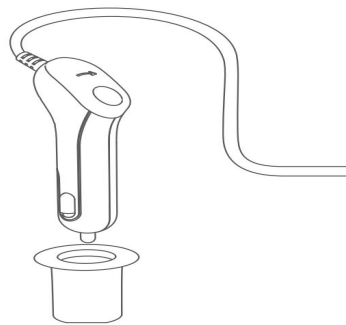


5) Connect the attached car charger to the power port of the device, carefully route the power cord along the windscreen and insert it under the trim strip.

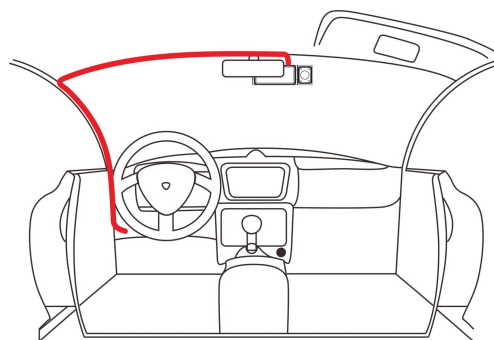


6) **Install pull-back camera:** When inserting the pull-back camera, you need to disconnect the power and keep the device in the shutdown state, or the device may not detect that the pull-back camera has been inserted, and there will be no pull-back display problem. **[Note]** The extension cord miniUSB interface of the pull-back camera must be inserted into the external camera interface of the device when the device is turned off.

7) **Use car charger:** insert the car charger into the cigarette lighter port of the vehicle. **[Note]** Please use the original car charger of the device. If a non-original car charger is used, the car may feed power, or the device may fail to boot due to a flickering screen.



8) **Use step-down wire:** Connect the yellow wire (BAT) of the power cord to the positive electrode of the car battery, the red (ACC) to the ignition switch, and the black (GND) to ground. **[Note]** Please connect the yellow wire BAT+ and red ACC to the position of the vehicle fuse box, and connect the black GND to the ground position of the vehicle shell. Different brands of cars may have different wiring positions of the fuse box. Please use the original car charger of the device. If a non-original car charger is used, the car may feed power, or the device may fail to boot due to a flickering screen.



9) Starting the car will automatically turn on the power and start recording video.

VII. Basic Operation

7.1 Use the automatic recording function

If you start the car engine, the recorder will automatically start and turn on the recording function. In addition, the blue charging indicator light is on, and the red video indicator light flashes. If the car engine is turned off, the recorder will automatically save the recorded content and shuts down. The recorded images are saved in sections on the Micro SD card. When the Micro SD card is full, the recorder will overwrite the earlier recorded images. **【Note】 The recorded loop time period can be set in the menu by itself, with the range of four levels-- off/1/3/5 minutes.**

7.2 Use manual recording function

In the case of external power supply, if the device is in shutdown state, the user can press and hold the **【ON/OFF】** of the recorder for 2-3 seconds. If the blue power indicator light is constant on, and the red indicator light is off, the recorder can be turned on and automatically start recording. If you need to shut down the machine, you can long press the **【ON/OFF】** again for 2-3 seconds. Then the recorder can automatically save the record and shut down.

7.3 Use the camera function

In standby mode or video mode, you can short press the **【】** key to take a photo. And the icon "****" will pop up in the upper left corner of the display screen during the shooting time.

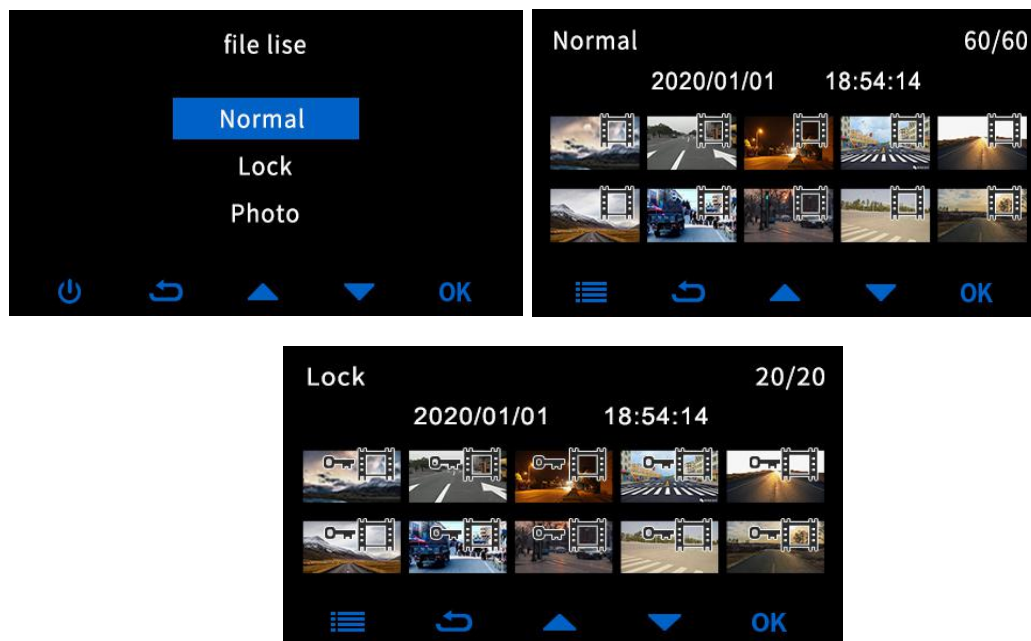
VIII. Menu Setting

After the device is powered on, you can short press **【≡】** to enter the menu settings. (If the device is recording a video, please press **【OK】** first to stop recording, and then press **【≡】** to enter the menu settings.)

8.1 File list

在待机状态下，短按**【≡】**进入菜单模式，短按**【▼】**将光标移动至“文件列表”选项，短按**【OK】**进入“文件列表”。短按**【▼】**或**【▲】**将光标移动选择所需回放的文件夹，短按**【OK】**确认进入所选文件夹。进入文件预览界面，短按**【▼】**或**【▲】**将光标移动选择所需回放的视频文件，短按**【OK】**确认即可播放该录像文件。

In standby mode, you can short press **【≡】** to enter the menu mode, short press **【▼】** to move the cursor to the “file list” option, and short press **【OK】** to enter the “file list”. You can short press **【▼】** or **【▲】** to move the cursor to select the folder to be replayed, and short press **【OK】** to conform to enter the selected folder. When entering the file preview interface, you can short press **【▼】** or **【▲】** to move the cursor to select the video folder to be replayed and short press **【OK】** for conformation. Then this video file can be played.



8.1.1. File locking: select “regular file” to enter the video file preview interface, and short press **【≡】** to enter lock menu mode to lock the current, lock all, delete the current, and delete all.

Lock the current: short press **【▼】** or **【▲】** to move the cursor to select the file to be locked and short press **【≡】** to enter lock menu mode to select to lock the current. Then the currently selected video file can be locked.

Lock all: short press **【▼】** or **【▲】** to move the cursor to select lock all. Then all regular folder recorder video can be locked.

Delete the current: short press **【▼】** or **【▲】** to move the cursor to select the file to be deleted and short press **【≡】** to enter lock menu mode to select to delete the current. Then the currently selected video file can be deleted.

Delete all: short press **【▼】** or **【▲】** to move the cursor to select delete all. Then all regular folder video file can be deleted.

8.1.2. File unlock: select “lock file” to enter the video file preview interface, and short press **【≡】** to enter delete menu mode to unlock the current, unlock all, delete the current, and delete all. Note: The locked file will not be overwritten and deleted by the loop.)

Unlock the current: short press **【▼】** or **【▲】** to move the cursor to select the file to be unlocked and short press **【≡】** to enter unlock menu mode to select to unlock the current. Then the currently selected video file can be unlocked.

【Note】 : The unlocked video file is still in the locked folder, but the locked icon is deleted and it can be

overwritten and deleted by the loop.

Unlock all: short press 【▼】 or 【▲】 to move the cursor to select to unlock all. Then all locked file video can be unlocked.

【 Note 】 : The unlocked video file is still in the locked folder, but the locked icon is deleted and it can be overwritten and deleted by the loop.

Delete the current: short press 【▼】 or 【▲】 to move the cursor to select the locked video file to be deleted and short press 【≡】 to enter unlock menu mode to select to delete the current. Then the currently selected locked video file can be deleted.

Delete all: short press 【▼】 or 【▲】 to move the cursor to select delete all. Then all locked video file can be deleted.

8.2. Resolution

In standby mode, you can short press 【≡】 to enter the menu mode, short press 【▼】 to move the cursor to the "resolution" option, and press 【OK】 to enter the "resolution". You can short press 【▼】 or 【▲】 to move the cursor to select the camera whose video resolution needs to be changed, and short press 【OK】 for confirmation to enter the selected camera. Then you can short press 【▼】 or 【▲】 to move the cursor to select the needed video resolution, and short press 【OK】 to confirm the selected resolution. **【Note】:** The device defaults to dual recording mode, and it changes into three-way mode after connecting the external rear camera. The resolution of 1080P+1080P+1080P will be displayed on the screen, and three cameras will simultaneously record the front of the road, the interior of the vehicle and the rear of the road. Different resolutions can also be separately set to front camera, inner camera, and rear camera to record video files at the same time. This machine has a one-key lock function. It can lock the images that needs to be retained without being overwritten by the loop. Short press 【≡】 while recording, and the recorder will lock the current image.



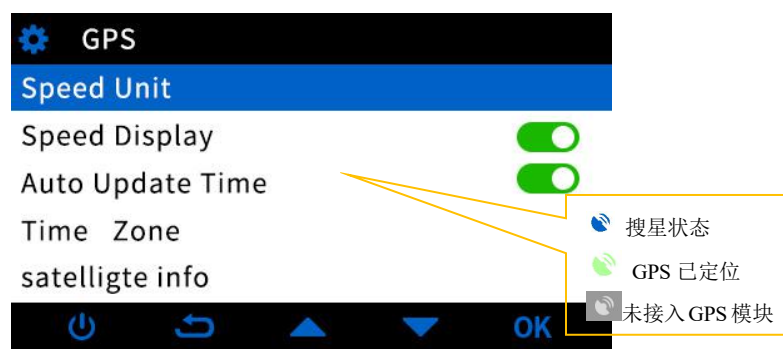
8.3 Date label

In standby mode, you can short press 【≡】 to enter the system Settings menu, and short press 【▼】 to move the cursor to the date label option. You can short press 【OK】 to select to open or close the date label. After the setting is completed, you can short press 【↶】 to exit the menu setting. **【Note】** After choosing to close the date label, the video file of the

device will not display the recording year, month, day and time of the current video file. It is suggested that the users not close the date label when using it, so as to avoid failure to find the corresponding time node reference when accidents occur or you want to query previous video files.

8.4 Satellite positioning

In standby mode, you can short press **[≡]** to enter the menu mode, short press **[▼]** to move the cursor to the satellite positioning option, and press **[OK]** to enter the satellite positioning. Speed unit, speed display, auto time update, time zone, and satellite signal can be viewed. Speed unit: short press **[OK]** to enter the speed unit and it can switch to the speed display unit. Speed display: Open to add the current speed to the video file. Auto time update: the current time can be automatically updated synchronously after the GPS positioning is successful. Time zone: short press **[OK]** to enter time zone and select the time zone of current location. Satellite signal: short press **[OK]** to enter satellite signal to view the number of current GPS satellite positioning.



1) Use a car charger with a GPS positioning module to connect to the USB charging port of the machine. The GPS icon of a device that is not connected to the GPS module is gray. After the GPS module is connected, the gray GPS icon on the device screen changes to blue, indicating the satellite searching state. Once the GPS signal is received and locked, the icon will turn green. (as shown below)



2) Video track view: please copy the video to the PC terminal and use the "GXPlayer" to play the video file. The player will automatically load the map information, vehicle speed and track. ("GXPlayer" download address <http://www.sunningsoft.com/en/pcgps.html>)

3) When the product is located in a building, tunnel or there are tall barriers around it, GPS satellite signal reception will be affected, and the product will be unable to provide you with positioning temporarily. Generally, at least 4 satellite signals must be received to complete GPS positioning. Bad weather or dense obstacles (trees or buildings) may affect the reception of satellite signals.

8.4. Loop recording

In standby mode, you can short press **【≡】** to enter the menu mode, short press **【▼】** to move the cursor to the loop recording option, and press **【OK】** to enter loop recording. You can short press **【▼】** or **【▲】** to move the cursor to the desired loop recording time, and short press **【OK】** to confirm the loop recording time. **【Note】**The loop recording time is divided into four levels of off, 1 minute, 3 minutes, and 5 minutes. You can set it according to your needs. The device defaults to 1 minute. It is recommended that users do not change the loop recording duration during use. The longer the loop recording time is set, the larger the memory card space occupied by a segment of recording compared to a 1-minute cycle during recording. And it may happen that the video file that the user just needs to query has been overwritten and deleted by the loop. Videos and pictures recorded by the front camera, inner camera, and rear camera are saved in the "NormalVideo" and "Photo" folders under the "DashCam" file of the Micro SD respectively.

8.5. Video encoding

In standby mode, you can short press **【≡】** to enter the menu mode, short press **【▼】** to move the cursor to the video encoding option, and press **【OK】** to enter video encoding. You can short press **【▼】** or **【▲】** to set and adjust the required video compression format, short press **【OK】** to confirm the setting item, and short press **【↶】** after the completion of setting to exist the menu setting. **【Note】** The device defaults to the H.264 video compression format. Users can set H.264 or H.265 video compression format on their own; It is recommended that users do not set the H.265 video compression format if they do not have special video recording requirements. That is because the device is a three-way 1080P video file with front, inner and rear channels. If it is switched to the H.265 video compression format, it is necessary to replace the industrial-grade Micro SD card so as to meet the video read and write requirements of the device.

8.6. Gravity sensing

In standby mode, you can short press **【≡】** to enter the menu mode, short press **【▼】** to move the cursor to the gravity sensing option, and press **【OK】** to enter gravity sensing. You can short press **【▼】** or **【▲】** to move the cursor to the required video lock sensitivity, short press **【OK】** to confirm the gravity sensing sensitivity. Files locked by gravity-sensing collisions are emergency videos.

(The emergency video recording detection is triggered by the G-sensor sensor (gravity sensor) and will automatically detect the collisions and impacts of the vehicle. This will cause the camera to protect the current video clip from being overwritten by the device loop recording by locking it and saving the video clip in the "LockVideo" folder under the Micro SD's "DashCam" file. The sensitivity of the G-Sensor can be adjusted by setting: Off, Low, Medium, High -- the default setting is Medium.



【Note】 The video files recorded through gravity sensing collisions are locked files and will not be deleted with the

loop recording video of the device. When the storage of emergency video takes up 30% of the storage amount of the memory card, please copy the emergency video to a PC or other device for storage, so as to ensure that device can store and write video files well. It is suggested that the memory card be formatted manually every 2-3 weeks.

8.7. Motion detection

In standby mode, you can short press **[≡]** to enter the menu mode, short press **[▼]** to move the cursor to the “motion detection” option, and press **[OK]** to enter motion detection. You can short press **[▼]** or **[▲]** to set the camera required for motion detection, short press **[OK]** to confirm to turn it on or off, and short press **[↶]** after the completion of setting to exist the menu setting. **【Note】** The front and inner cameras of the device support motion detection by default. You can select the front or inner camera to turn on motion detection separately, and the device is in off state by default. After the motion detection is turned on, the device will automatically start recording for one minute when the camera detects an object shaking or moving in front. After recording for one minute, the device will automatically enter the screen-saver state. When the camera detects the shaking or movement of an object in front of the camera again, the device will automatically brighten the screen and start recording.

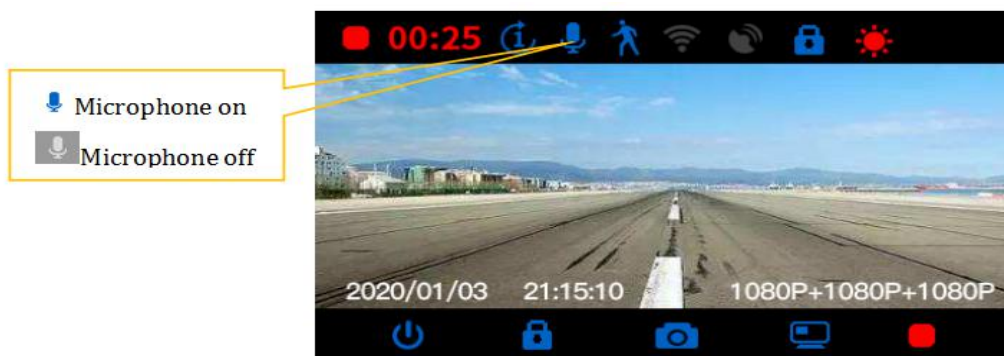


8.8 Screen saver

In standby mode, you can short press **[≡]** to enter the menu mode, short press **[▼]** to move the cursor to the “screen saver” option, and press **[OK]** to enter screen saver. You can short press **[▼]** or **[▲]** to move the cursor to the required screen saver time, and short press **[OK]** to confirm the screen saver time. **【Note】** The screen saver time is divided into three levels of off, 30 seconds, and 1 minute, which can be set based on your own needs. If 30 seconds is selected as the screen saver duration, and if there are no operations within 30 seconds, the device will automatically enter the screen saver state, thereby to reduce power consumption and not affect the driver's driving. At this time, a short press on any key of the device will automatically exit the screen saver.

8.9. Video and audio

In standby mode, you can short press **[≡]** to enter the menu mode, short press **[▼]** to move the cursor to the “video and audio” option, and press **[OK]** to choose to turn it on or turn it off. **【Note】** The device defaults to turn on video and audio and the user can turn it off or on in accordance with their own needs. In order to provide a certain reference when querying the recorded video, it is recommended that users turn on the video and audio.



8.10. Sound setting

In standby mode, you can short press **【≡】** to enter the menu mode, short press **【▼】** to move the cursor to the “sound setting” option, and press **【OK】** to enter items of the key sound, switch audio, playback sound setting. You can also short press **【▼】** or **【▲】** to set and adjust the required items, and short press **【OK】** for confirmation. Short press **【▼】** or **【▲】**, and you can adjust the setting value. Confirmation can be made by short pressing **【OK】**. You can also short press **【↶】** after the completion of setting to exist the menu setting. **【Note】** The device defaults the values of key sound, switch audio, playback sound are 100%. And there are four level values to choose from 0, 50%, 75%, and 100%.

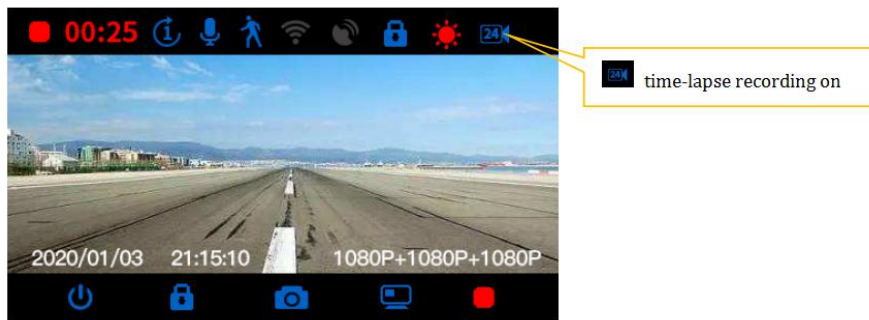
8.11 Infrared light of inner camera

In standby mode, you can short press **【≡】** to enter the menu mode, short press **【▼】** to move the cursor to the infrared light option, and press **【OK】** to enter the infrared light. You can short press **【▼】** or **【▲】** to move the cursor to the desired infrared light on state, and short press **【OK】** to confirm the infrared light display state. **【Note】** After the infrared light is turned on, the screen of the camera in the car will display black and white. The infrared light is divided into three levels: Off, On, and Automatic, which can be set based on needs. When the light in the car is very dark, you can turn on the infrared light for supplementary lighting, so as to strengthen the definition of the video files inside the car.

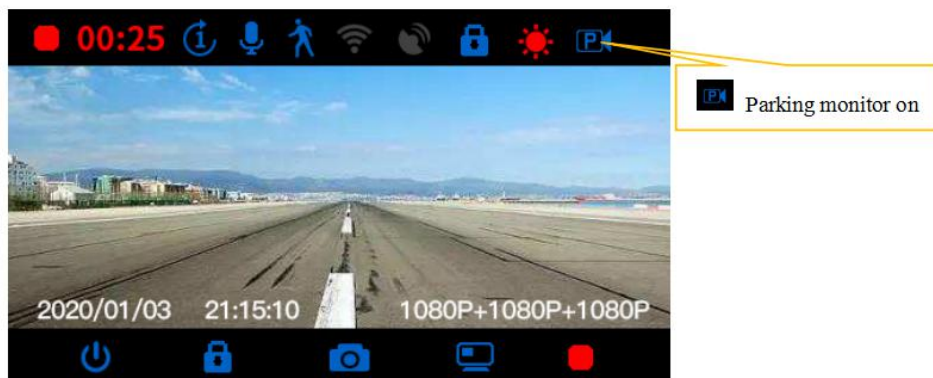


8.12. Parking monitor

In standby mode, you can short press **【≡】** to enter the menu mode, short press **【▼】** to move the cursor to the power supply mode option, and short press **【OK】** to enter the power supply mode. You can short press **【▼】** or **【▲】** to move the cursor to select ACC power supply, and short press **【OK】** to confirm and enter the “time-lapse recording” option. **【Note】** The “time-lapse recording” mode defaults to 2 frames/1 second 24 hours. After the “time-lapse recording” is turned on, the device will automatically record for 24 hours and shut down after turning off the key. In order to ensure the normal use of the machine during “time-lapse recording”, please use a power cord with ACC detection line.



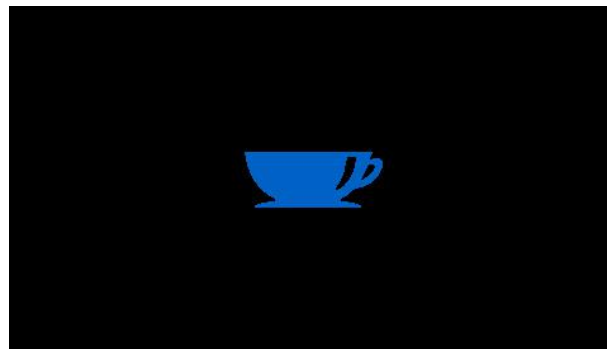
2) After the “parking monitor” mode is turned on, if, in the shutdown state, the vibration intensity of the vehicle reaches the level when the device is turned on, the recorder will automatically start and record for 30 seconds. After the 30 seconds’ recording, the device will automatically save the recording files and shut down. At the moment, the recorded video files are locked images and will not be covered by the loop. **【Note】 In order to ensure the normal use of the machine during “parking monitor”, please use a power cord with ACC detection line.**



【Note】 When in use, it is a straight choice between the “time-lapse recording” and the “parking monitor”. When you choose “time-lapse recording”, the parking monitor function can not be used at the device end then.

8.13 Fatigue warning

In standby mode, you can short press **【≡】** to enter the menu mode, short press **【▼】** to move the cursor to the fatigue warning option, and short press **【OK】** to enter fatigue warning. You can short press **【▼】** or **【▲】** to move the cursor to the required warning alert duration (off, 1 hour, 2 hours, 4 hours), and short press **【OK】** to confirm and enter the required warning alert duration. **【Note】** The system defaults to alert once 1 hour. When the device works for an hour without any operation, the device will raise an alarm audio and pop up a fatigue warning icon on the display screen.



8.14. Date and time

In standby mode, you can short press **【≡】** to enter the menu mode, short press **【▼】** to move the cursor to the date setting option, and short press **【OK】** to enter time setting option. You can short press **【▼】** or **【▲】** to set and adjust the required date and time values, and short press **【OK】** to move the setting items. After the completion of setting, please short press **【↶】** to exist the menu setting. **【Note】** In order to effectively record the date and time of obtaining evidence of driving safety accidents, please set the correct date and time before using the device.

8.14. Default settings

In standby mode, you can short press **【≡】** to enter the menu mode, short press **【▼】** to move the cursor to the default settings option, and short press **【OK】** to enter the default settings option. You can short press **【▼】** or **【▲】** to select Yes, and short press **【OK】** to restore default settings. After the default settings are restored, the machine will automatically shut down and restart. After the machine is restarted, language selection, time setting and vehicle speed unit setting will pop up. And then you can enter the video recording interface upon the completion of such settings.

IX. Mobile APP Applications

9.1 Android phones: Open Google Play and search for "roadcam" or scan the QR code below to download and install.

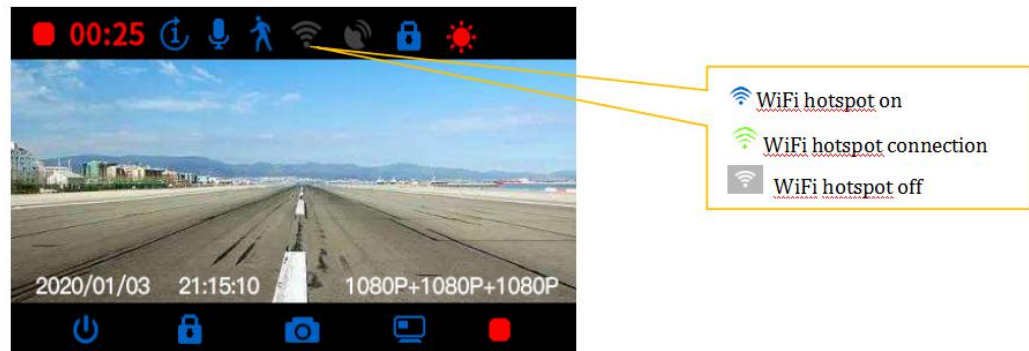
9.2. Apple IOS phones: Open the APP Store and search for "roadcam" or scan the QR code below to download and install.



(Roadcam QR code universal for Android and IOS)

9.3. When the installation is completed and the APP is opened, there will be prompt whether you want "roadcam" to access the photos of the phone, please click "Yes".

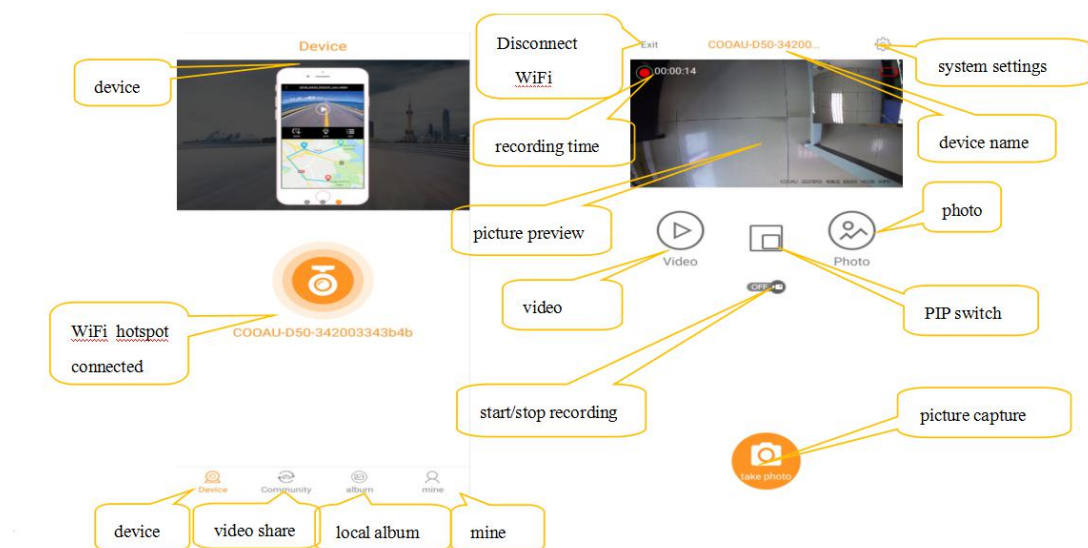
9.4. There is a WIFI setting option in the menu settings, please select "On". For the first connection, you need to enter the phone Settings to search for WIFI and enter the password. And there is no need to enter a password for a second connection.



9.5. WiFi connection: Please click the WIFI setting of the mobile phone to enter the connection setting interface and search for the WIFI name of the machine: for example: C00U-D50-*****.

Enter the password for connection, and the initial password of this machine is: 12345678.

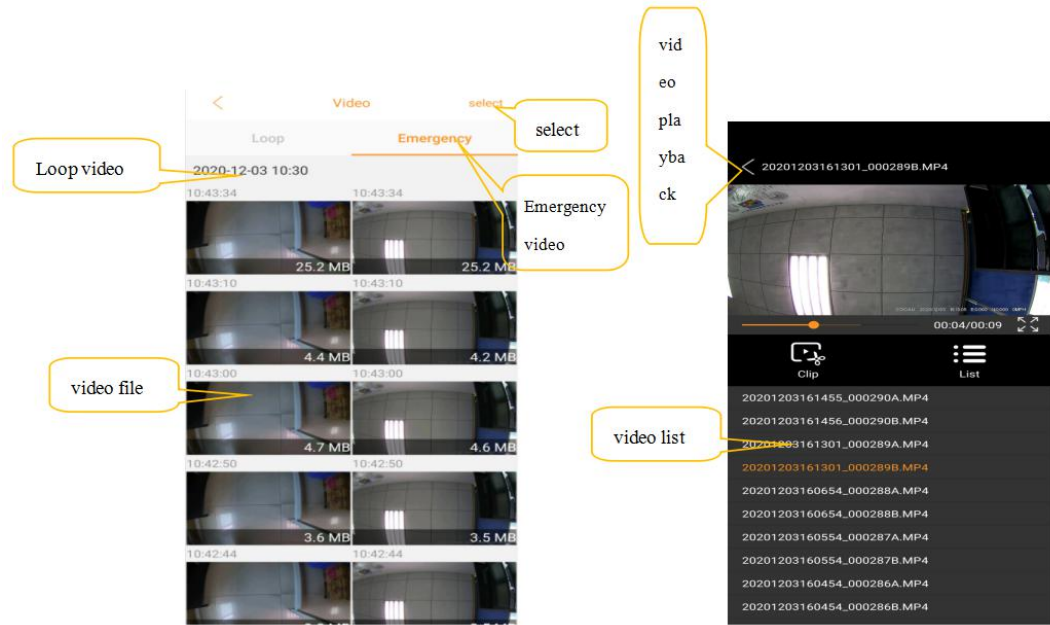
9.6. Introduction to the APP interface: Open the APP. After the successful connection of the mobile phone and the recorder, you can see recording picture of the recorder in the APP.



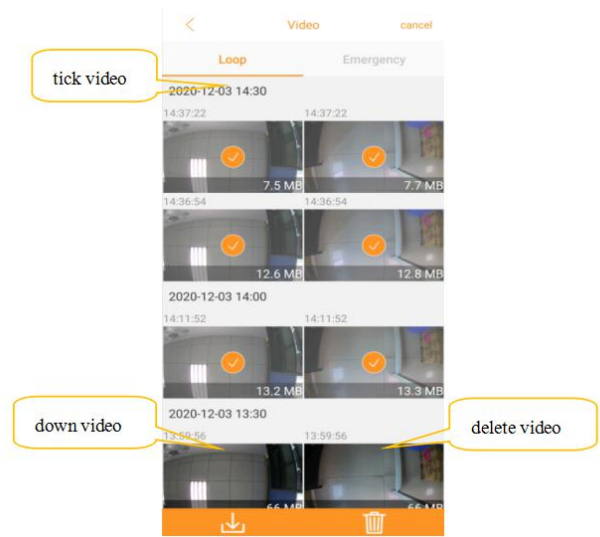
9.7. Online video preview: Click "Video" to enter the online video preview list, and click the video file required to be replayed to watch the video online. In the file name suffix, A stands for the video recorded by the front camera; B stands for the video recorded by the inner camera of the vehicle; and C stands for the video recorded by the rear camera.

(Note: The video watched online on your mobile phone is compressed. If there is need to watch the original

high-definition video, please download the video file to the mobile phone and then play it, or you can insert the Micro SD card into your computer and then watch it.)

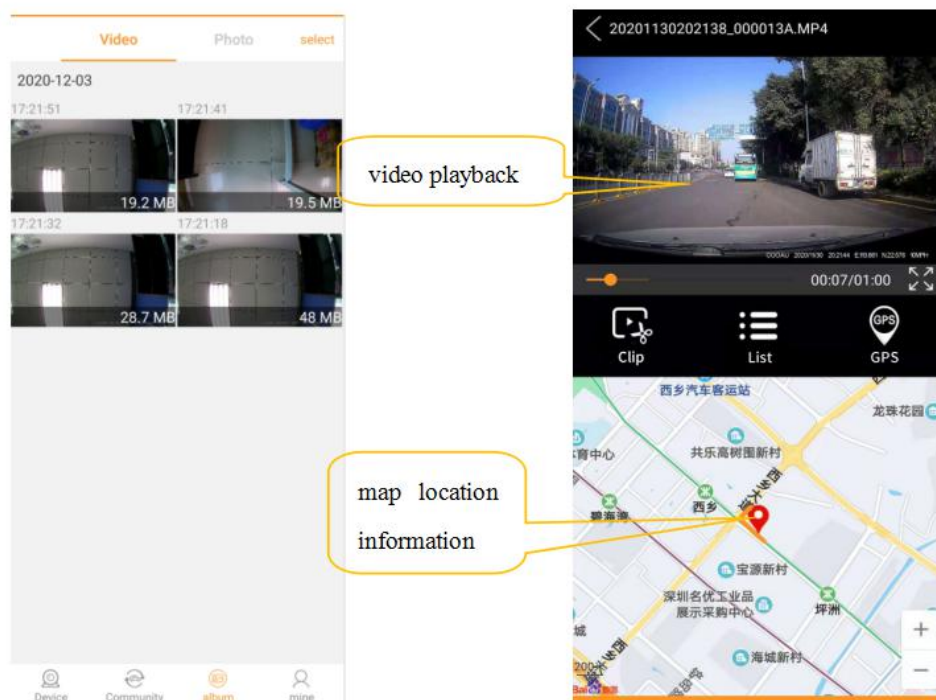


9.8. Video download and deletion: Please click "Select" and then tick the video file required to download. And you can download the selected video file by clicking "Download". Please click "Select" and then tick the video files required to delete. And you can delete the selected video files by clicking "Delete" .



9.9. Track playback: Please click "local album" to view the downloaded video files, and click to play the desired video files. When playing, the APP terminal will automatically load the map location information

(Note: The video file can load the map location information, but a car charge power cord with the GPS positioning module must be used, and the device must be successfully positioned. The video file must be downloaded to the mobile phone for preview. And the map location information cannot be loaded if the video file is viewed online.)



X. Product Specifications

Main control chip	NT96670
Image sensor	In-vehicle, out-vehicle IMX 307sensor rear recording NT96671 Ethernet plus GC2053 sensor
ROM	32Mb SPI FLASH
RAM	2GBit DDRIII RAM
Display	2.45inch IPS screen, resolution 272*480
Viewing angle	145 degrees
Recording method	Loop recording/motion detection
Video format	MP4
deo encoding method	H.265/H.264 (optional)
Front camera resolution	1920*1080P/30FPS 1080*720P/30FPS
Inner camera resolution	1920*1080P/30FPS 1080*720P/30FPS
Rear camera resolution	1920*1080P/30FPS 1080*720P/30FPS
Camera resolution	1920*1080P 1080*720P
Seamless video recording	Yes
Automatic recording at boot	support
Gravity sensing	In case of car crashes, emergency video is saved and will not be deleted.
Manual lock	When recording, short press the menu and the current file will be locked and will not be deleted.
Languages	English, Spanish, German, Simplified Chinese, Japanese
Video segmentation time	1 minute / 3 minutes / 5 minutes
Recording	Built-in microphone, recording can be turned off/on
WIFI	support

Parking monitor	support
Storage medium	Micro SD
Support capacity	32GB--256GB
USB port	Micro UBS/5Pin
GPS	support (optional)
Super capacitor	5.5V 3.5F (Support instant power to save the last recorded video)
Power consumption	750MA
Power supply	vehicle power supply 5V/2A
Storage temperature	-10℃～70℃
Operating temperature	-10℃～60℃

XI. FAQ

- ◆ If the machine fails to work, please try the following methods to eliminate the failure. If it cannot be eliminated, please contact our after-sales service.

1. Failure to record sound normally

- ◆ If there is no sound during recording, please check whether the recording is turned off.
- ◆ Please replace the memory card in the case of a memory card error.
- ◆ Please replace the storage card of U3 if the recording file of the device is stuck.
- ◆ If the device fails to detect the memory card, please check that the memory card has been installed correctly. (在 A "ticking" sound should be heard during the installation.)
- ◆ If it is prompted on the device that the memory card is full, please delete unnecessary video files in time so as to release space on the memory card.

2、Unclear video

- ◆ If the recorded video is not clear on the device, please make sure the front windscreen is clean.
- ◆ If there is dirty spots on the device during recording, please wipe the dust and dirt off the lens before shooting.

3. The device works normally, but the keys do not work and crashes.

- ◆ Please short press the reset key to restart the device to initialize the machine.
- ◆ Note: Under normal circumstances, please use the reset key to initialize with caution. This operation may cause the loss of recorded video data.

4. Missing seconds, jamming during playback, or inconsistent video

- ◆ If there is a missing second or less recording in the recording video of the device, it may be because that the movement detection is not turned off. It is recommended to turn off the movement detection.
- ◆ If the recording video of the device is stuck on the PC end, please change the PC or another player to play.

FCC STATEMENT :

This device complies with Part 15 of the FCC Rules. Operation is subject to the following two conditions:

- (1) This device may not cause harmful interference, and
- (2) This device must accept any interference received, including interference that may cause undesired operation.

Warning: Changes or modifications not expressly approved by the party responsible for compliance could void the user's authority to operate the equipment.

NOTE: This equipment has been tested and found to comply with the limits for a Class B digital device, pursuant to Part 15 of the FCC Rules. These limits are designed to provide reasonable protection against harmful interference in a residential installation. This equipment generates uses and can radiate radio frequency energy and, if not installed

and used in accordance with the instructions, may cause harmful interference to radio communications. However, there is no guarantee that interference will not occur in a particular installation. If this equipment does cause harmful interference to radio or television reception, which can be determined by turning the equipment off and on, the user is encouraged to try to correct the interference by one or more of the following measures:

- Reorient or relocate the receiving antenna.

- Increase the separation between the equipment and receiver.

- Connect the equipment into an outlet on a circuit different from that to which the receiver is connected.

- Consult the dealer or an experienced radio/TV technician for help.

FCC Radiation Exposure Statement:

This equipment complies with FCC radiation exposure limits set forth for an uncontrolled environment. This equipment should be installed and operated with minimum distance 20cm between the radiator & your body.