



## Benton Technology Co., Ltd

East Block, Building#1 Weixinda Industrial Park, No.4 Fuye Road, Wuhe Avenue, Longhua District, Shenzhen, China.

Add: Floor 1-5 East Block Building # 1 Weixinda Industrial Park Guanlan Street Longgang Shenzhen CN

HealthJay Inc.

435 Stanford Ave, Palo Alto, California, 94306, USA

Attn: OET Dept.

Ref: FCC Class II Permissive change for FCC ID: 2AYG7- JPCD1020211

Applicant: Benton Technology Co., Ltd

Dear Examiner,

This is to request a Class II Permissive change for FCC ID: 2AYG7- JPCD1020211 granted on 1/29/2021 (date).

Changes between PCB Q107\_MB\_V1.1 and PCB RC-US717TC

1. PCB Top and Bottom view

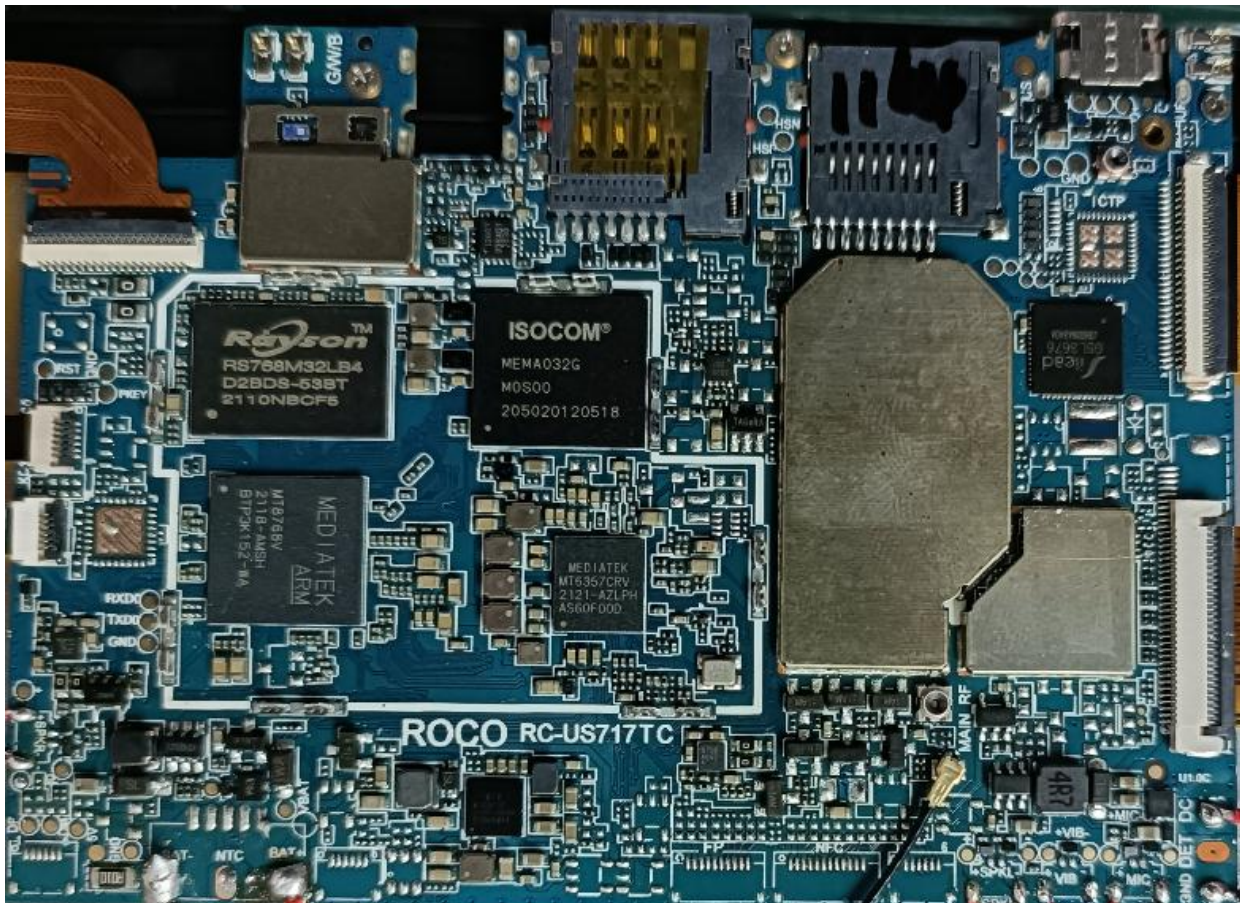
Old PCB Top Side Q107\_MB\_V1.1



East Block, Building#1 Weixinda Industrial Park, No.4 Fuye Road, Wuhe Avenue, Longhua District, Shenzhen, China.

Add: Floor 1-5 East Block Building # 1 Weixinda Industrial Park Guanlan Street Longgang Shenzhen CN

New PCB Top Side RC-US717TC

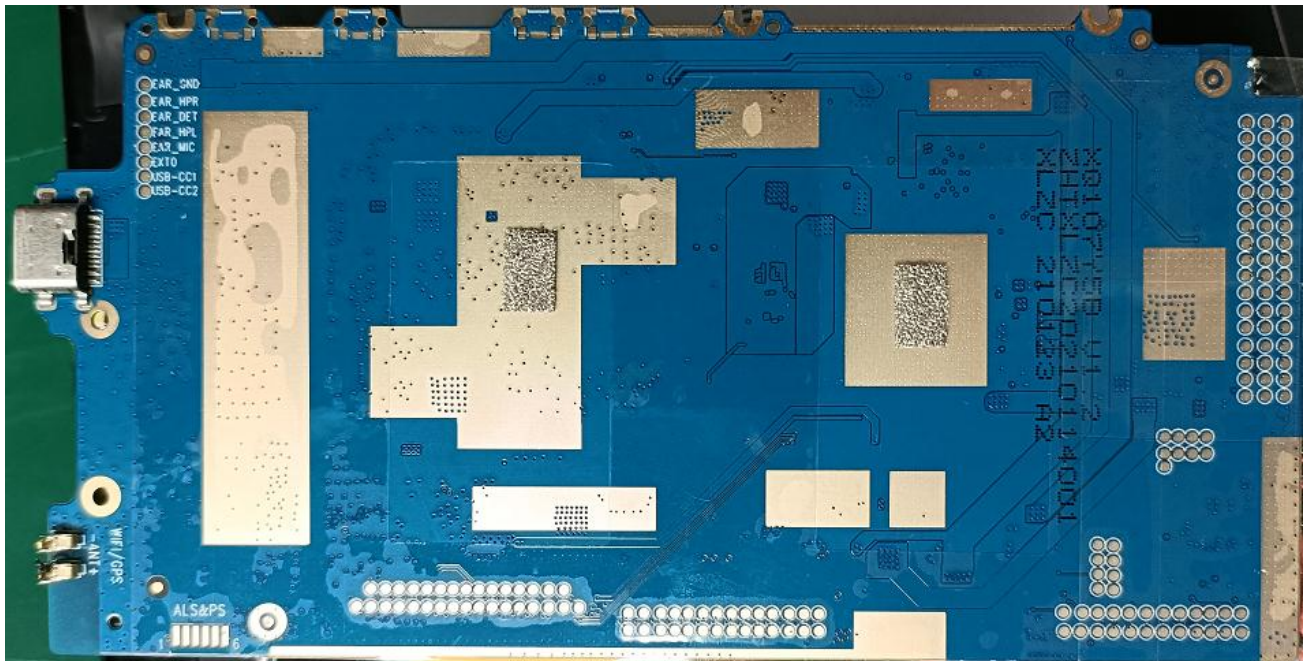




East Block, Building#1 Weixinda Industrial Park, No.4 Fuye Road, Wuhe Avenue, Longhua District, Shenzhen, China.

Add: Floor 1-5 East Block Building # 1 Weixinda Industrial Park Guanlan Street Longgang Shenzhen CN

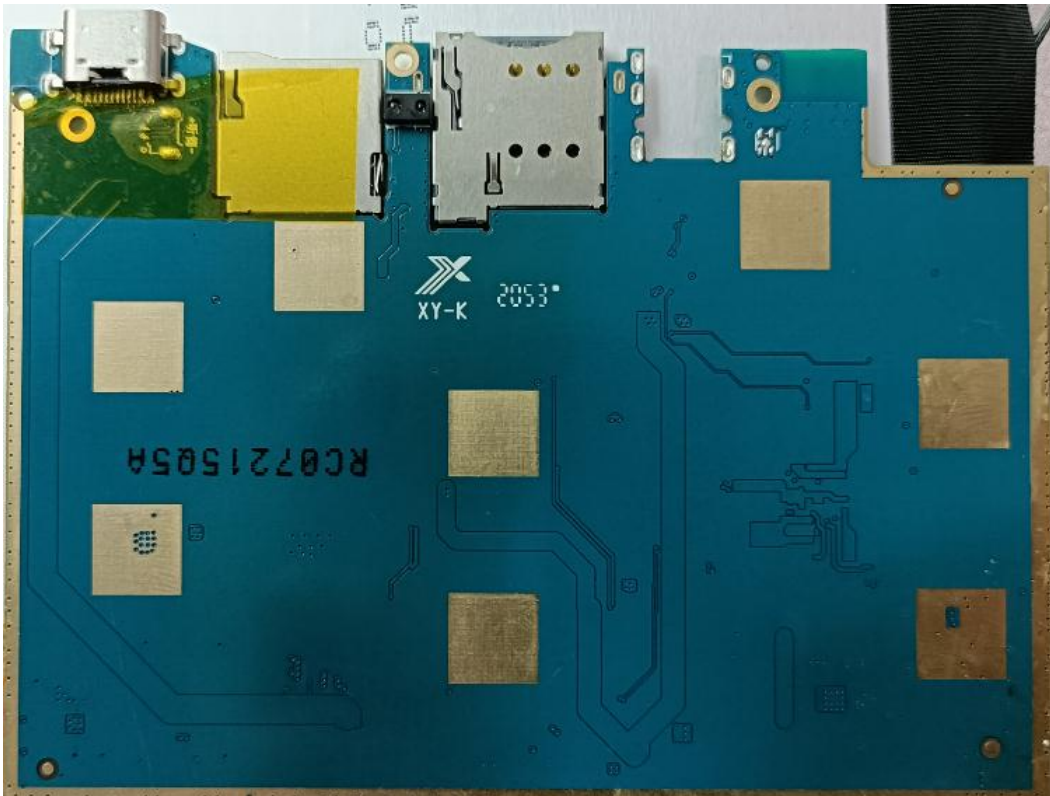
Old PCB Bottom Side Q107\_MB\_V1.1



East Block, Building#1 Weixinda Industrial Park, No.4 Fuye Road, Wuhe Avenue, Longhua District, Shenzhen, China.

Add: Floor 1-5 East Block Building # 1 Weixinda Industrial Park Guanlan Street Longgang Shenzhen CN

#### New PCB Bottom Side RC-US717TC





#### Summary:

1. The SIM card slot from 2 slots become 1 slot.
2. The memory DDR ,Storage,earphone socket ,the camera is different.
3. Board shape is different, configuration is the same.
4. The original product model is JPCD1020211, now it is added model to JayPad\_2\_0, M10, P30, L10, M8, L8, K7, P7, M7;
5. The original manufacturer: Shenzhen Great Asia Electronic Co., Ltd. now it is changed to Benton Technology Co., Ltd
6. Original Manufacturer address: 5F, Block B, Rui Xiang Fa Industry Building, Shang Xue Technology Park, Long Gang District, Shenzhen, China, now it is changed to East Block, Building#1 Weixinda Industrial Park, No.4 Fuye Road, Wuhe Avenue, Longhua District, Shenzhen, China.

Add: Floor 1-5 East Block Building # 1 Weixinda Industrial Park Guanlan Street Longgang Shenzhen CN

Chip Name	Chip model	Picture	Chip Name	Chip model	Picture
the memory DDR	RS76SM32LE4		the memory DDR	4JA96JW404	
Storage	isocom		Storage	Biwin	
SIM Slot	single card		double card		

Headphone seats are different	earphone socket		earphone socket	earphone socket	
The camera is different	The camera is different		The cameras different		