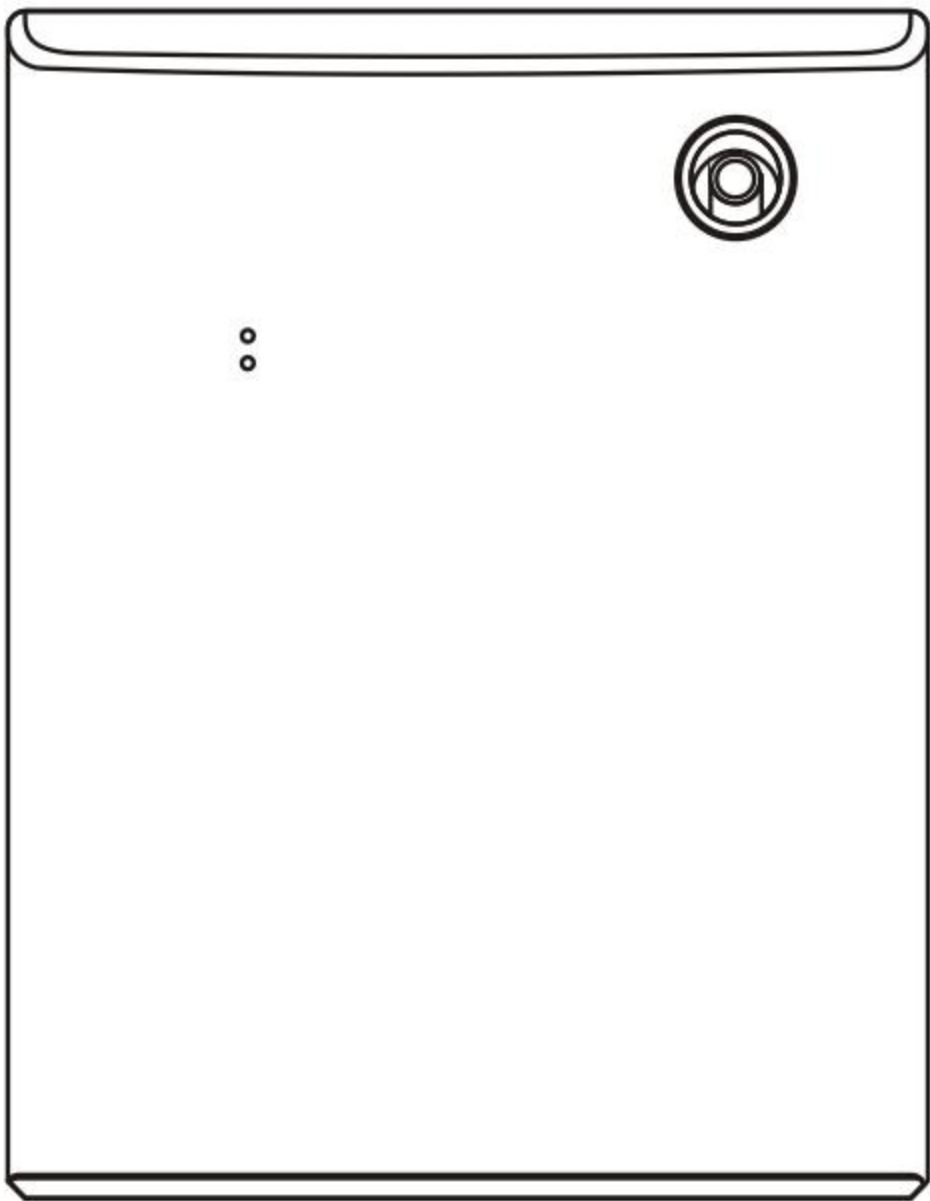


# Product Manual



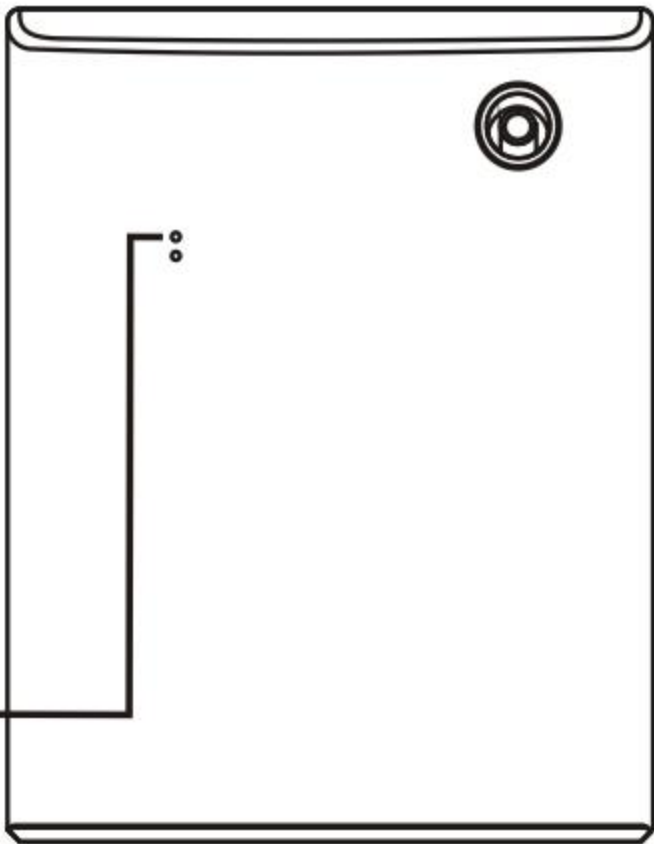
## App download



Notice: IOS users search Aroma IOT on the Apple Store to download. Android users scan the QR code to download, IOS users also can scan to download.

## Tips

- ✧ Bluetooth signal receiving light, blue indicator light.  
When the APP is connecting and successfully connected, the Bluetooth light is always on. A command is sent by the APP each time, the blue light flashes three times, indicating the setting is successful. If no command is sent for more than 10 minutes during successful connection, Bluetooth will automatically disconnect. In non-Bluetooth connection status, the blue light is off.



## Atomization level and working parameters

Working time /single time(s)	10s-200s (adjustable)
Interval time/single time (s)	10s-200s (adjustable)
Fan gear/single time	low gear、 high gear
Working time/date (d)	(Monday to Sunday) (Monday to Saturday) (Monday to Friday); (Monday) (Tuesday) (Wednesday) (Thursday) (Friday) (Saturday) (Sunday);(Monday to Wednesday) (Tuesday to Thursday) (Saturday to Sunday); (Monday, Wednesday and Friday) (Tuesday, Thursday and Saturday)

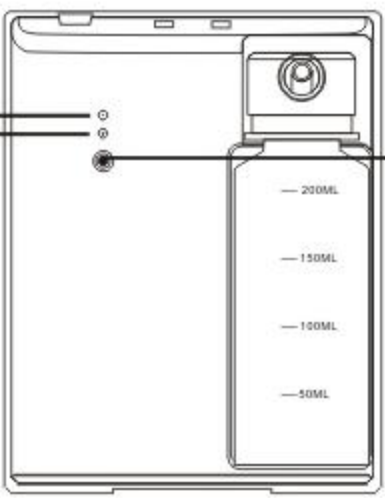


# Instruction

## Device indicator light/ Button function

Bluetooth signal receiving light, blue indicator light.

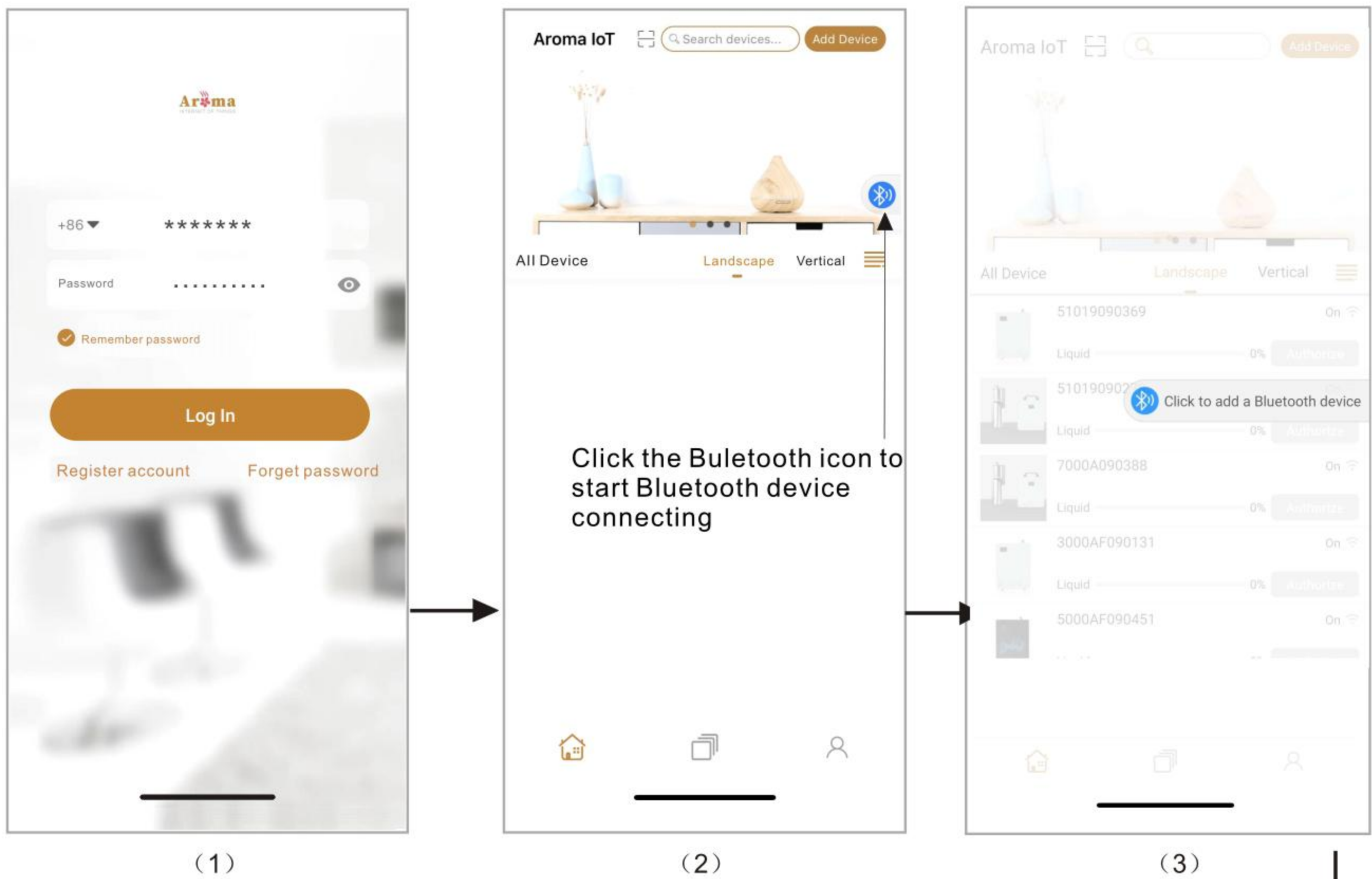
The device working light, red indicator light.



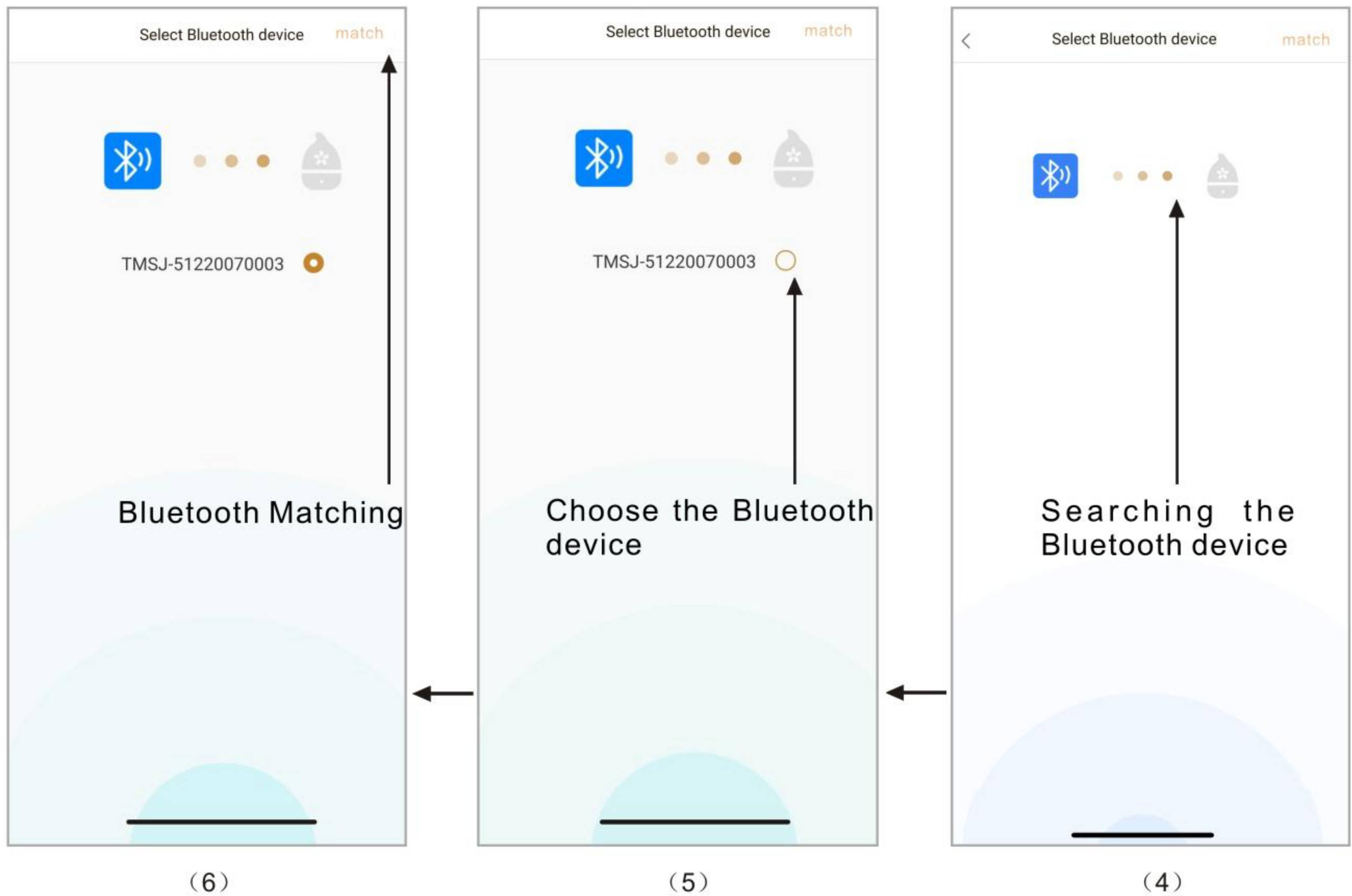
Short press: adjust the fan gear, the gears are: low gear, high gear, off.

Long press: the device enters into test operation function, works for 15 seconds.

## APP operation demonstration:



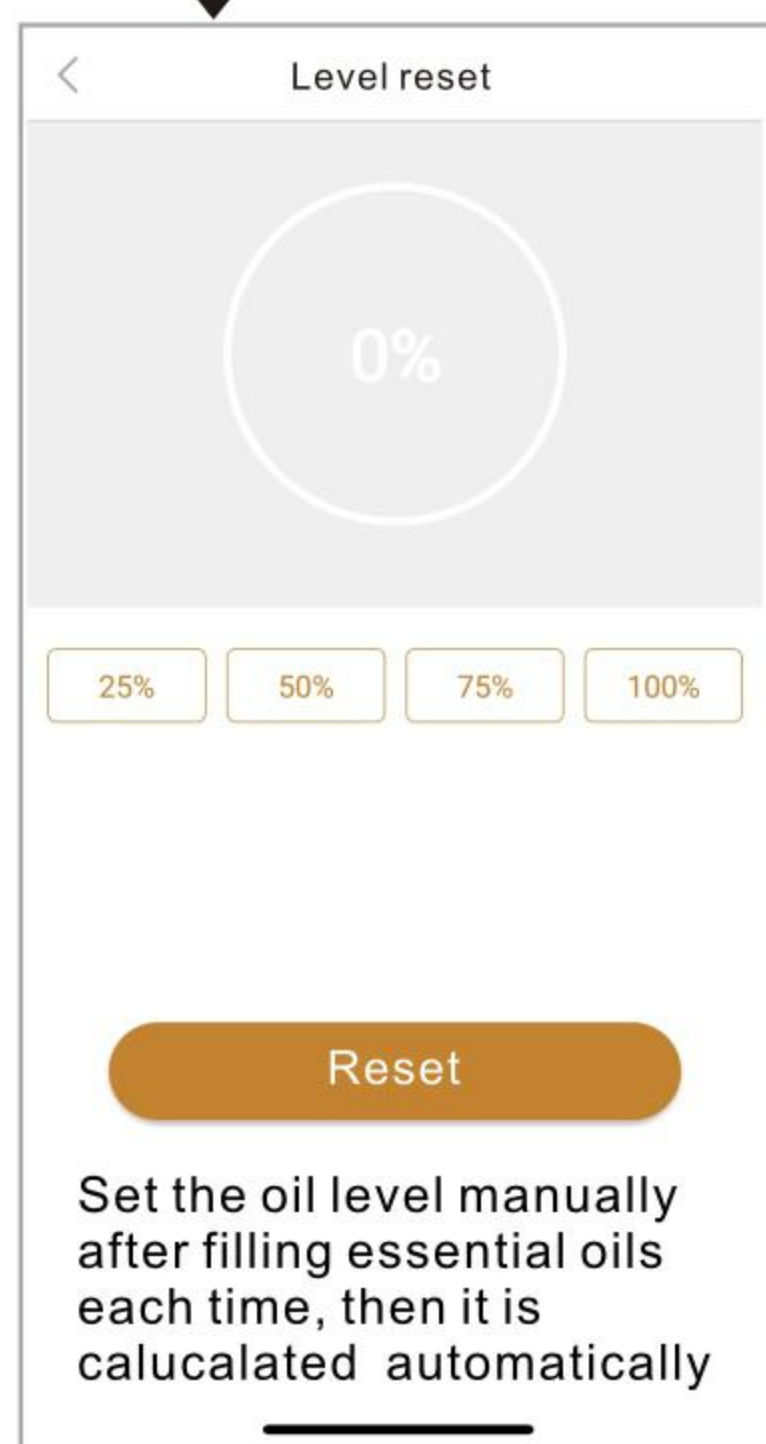
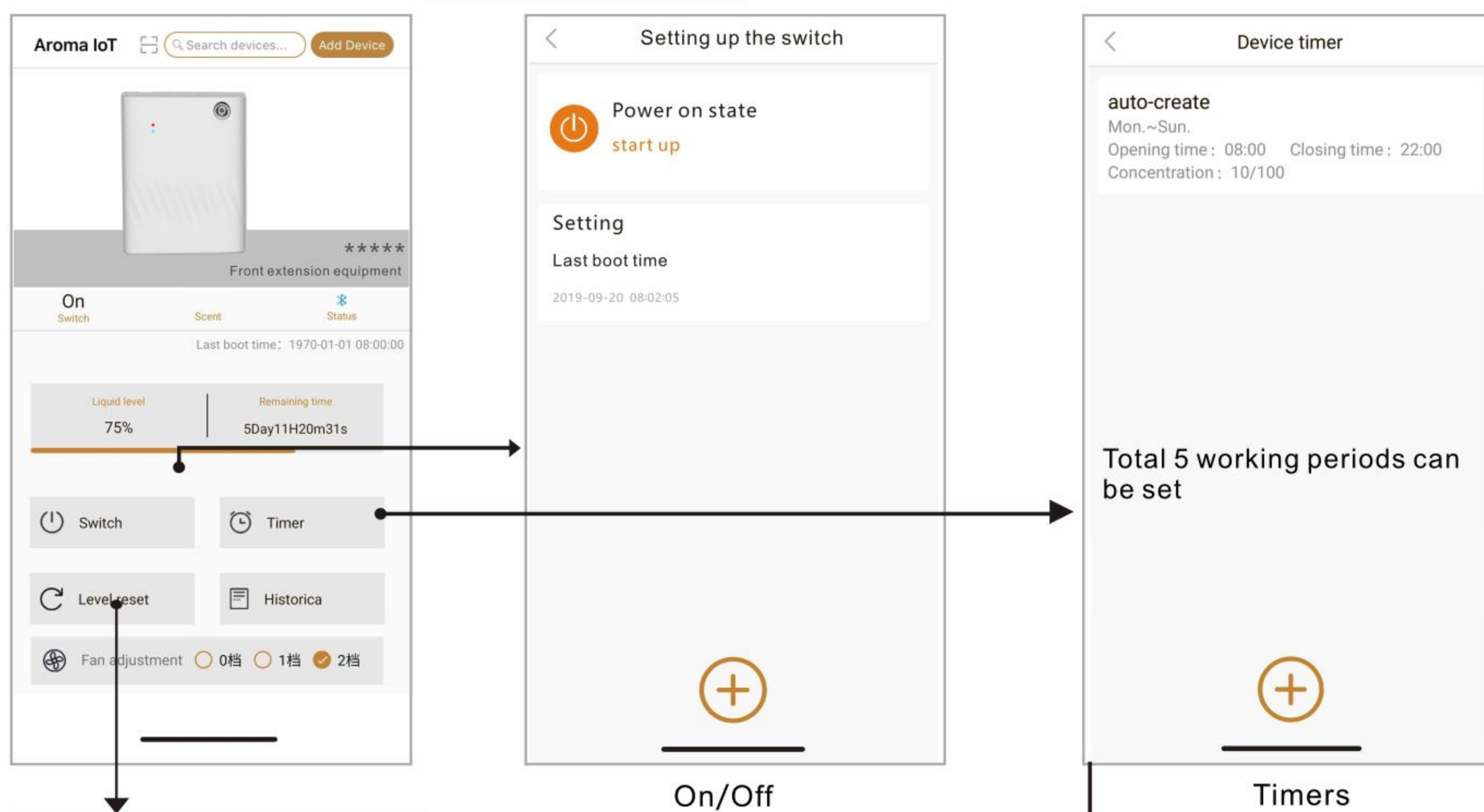
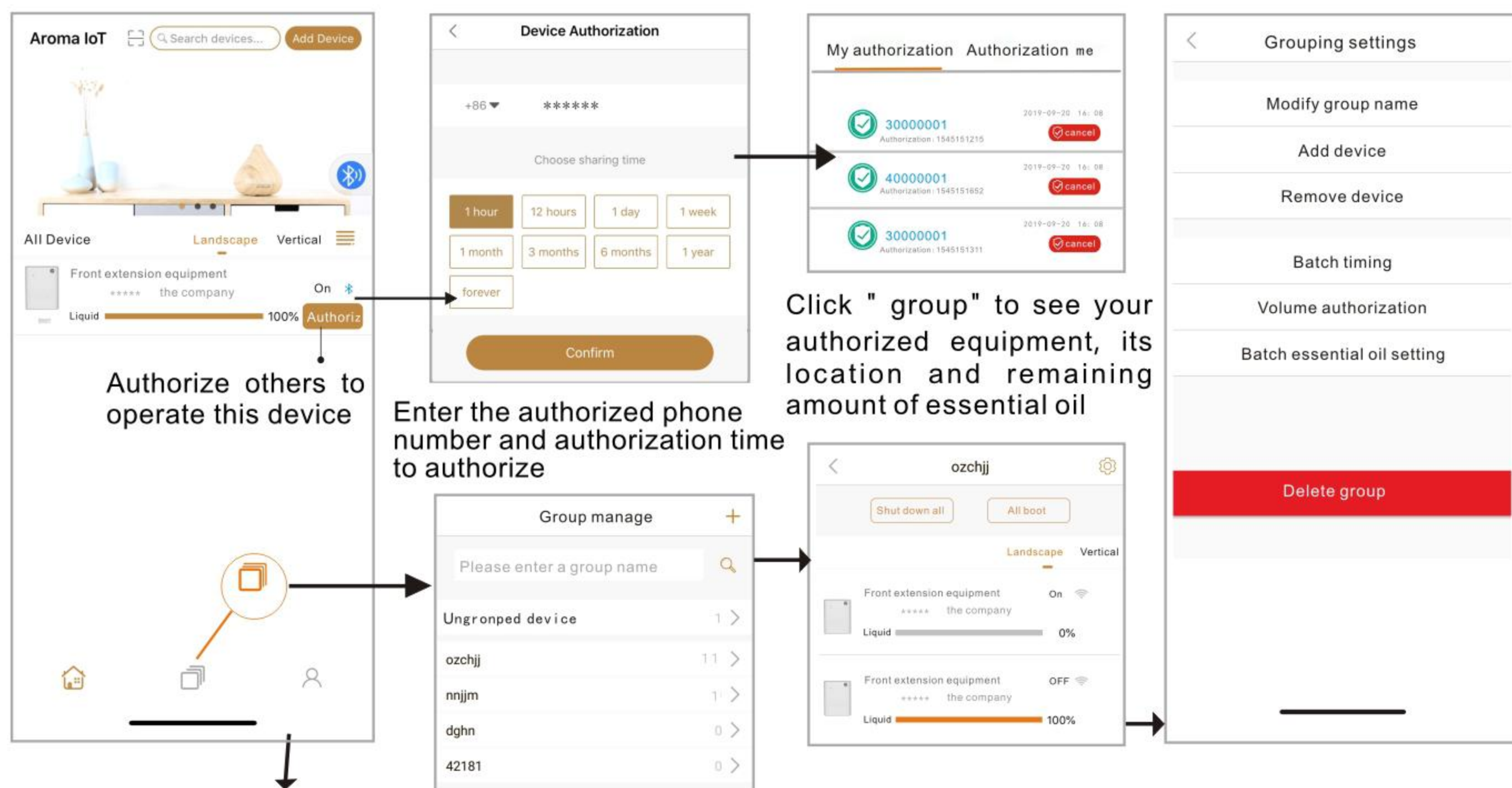
Note:the new user downloads the app first, use mobile number or email to register, then sign in.



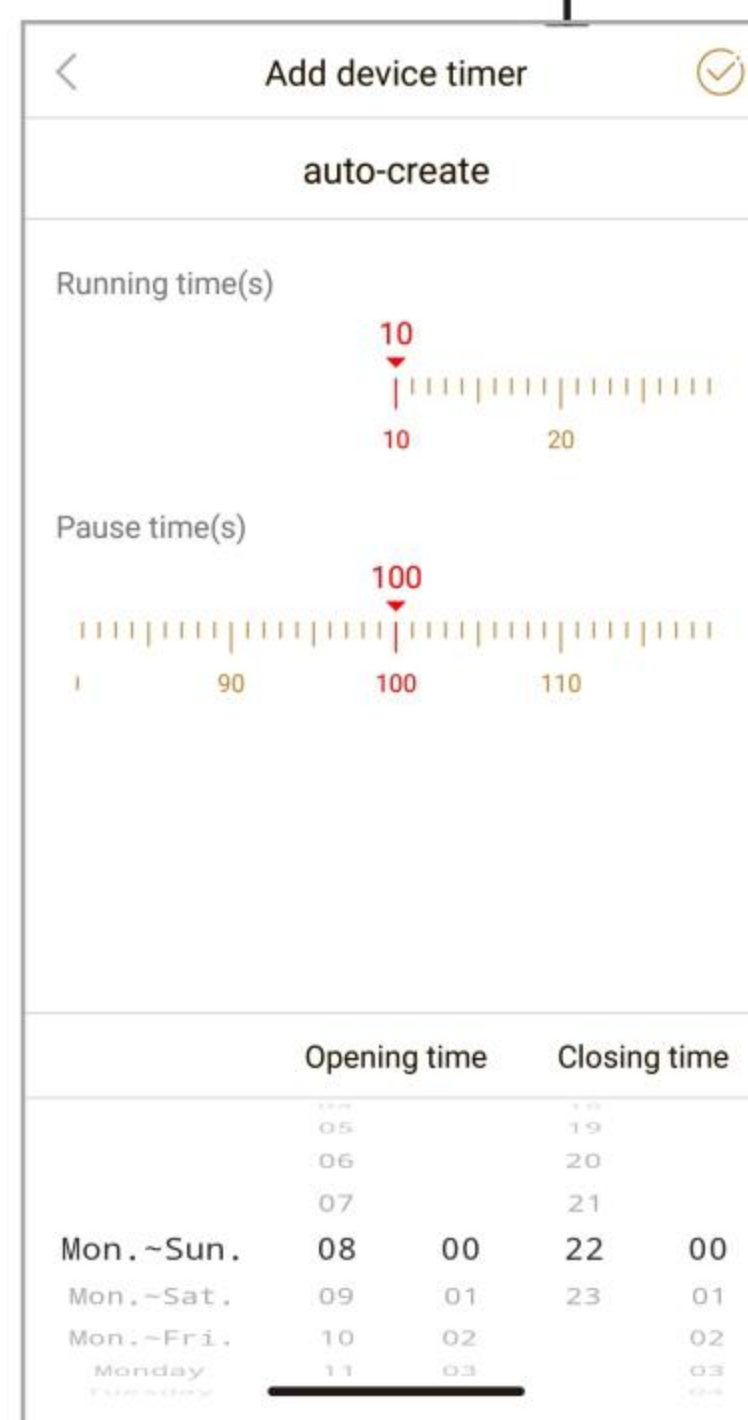
Note: open Bluetooth first to search for the device name, then connect the device.



## APP operation demonstration:



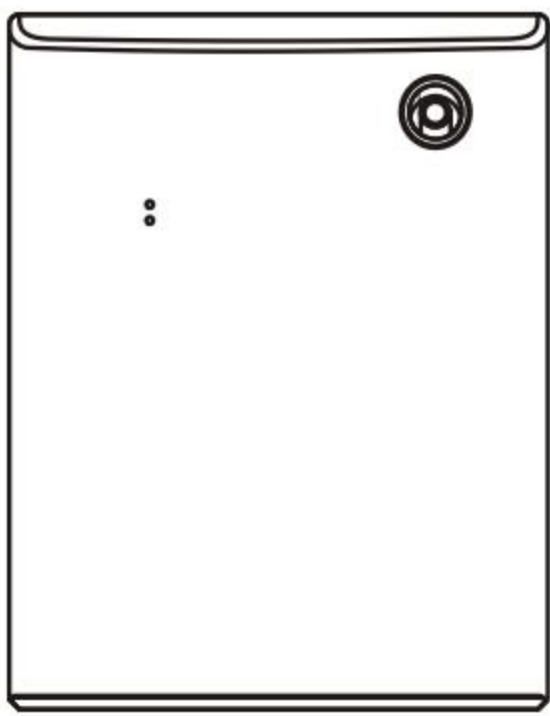
## Level reset



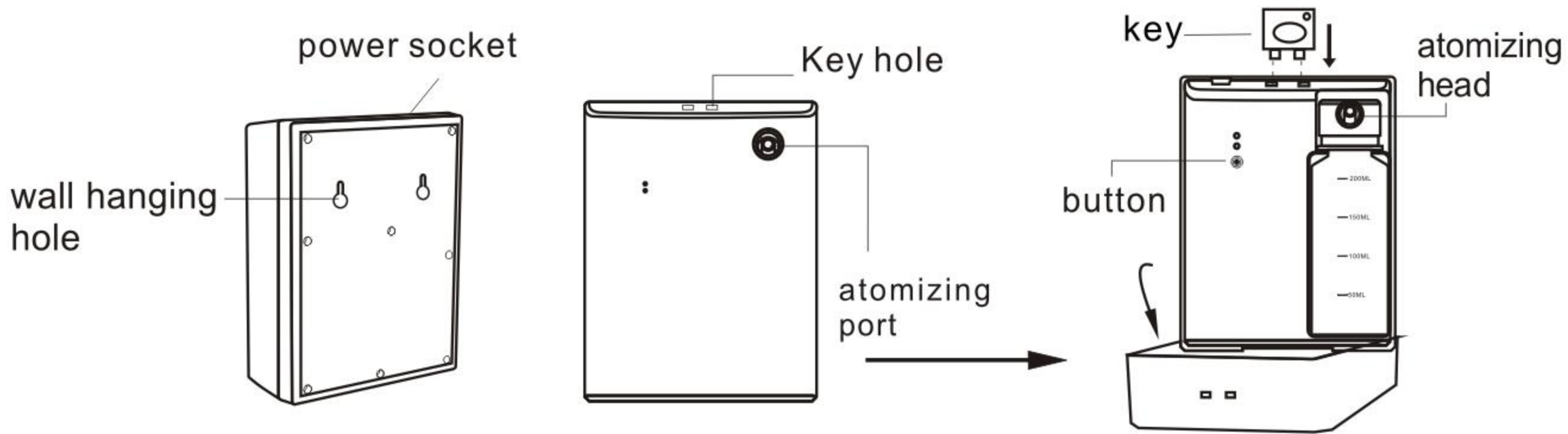
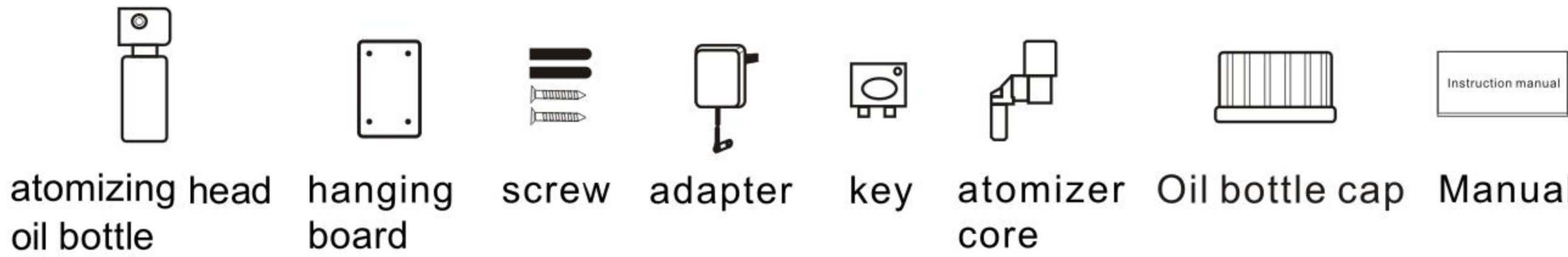
Set its working time and pause time from 10-200s



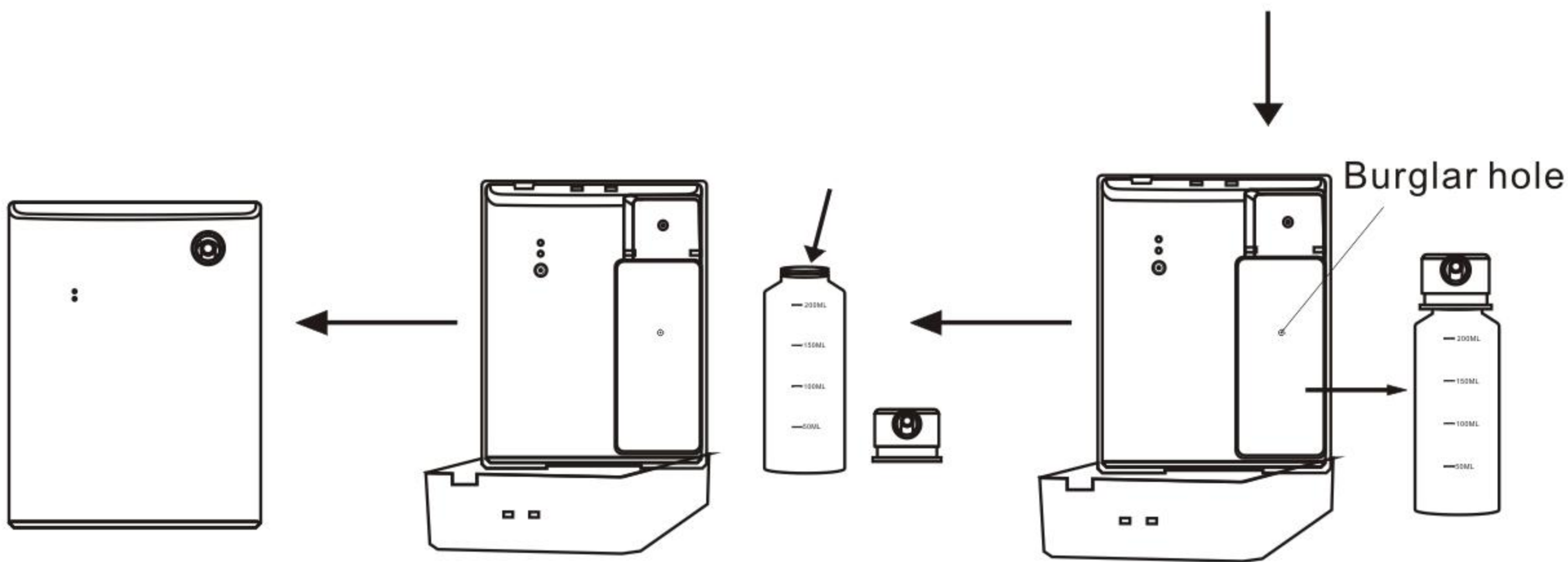
Parameter



Model No. : 500B  
Product Size : 144\*73\*186mm  
Voltage : DC12V  
Power : 5W  
Coverage : 300-500m³  
Capacity : 200ml+  
Product weight : 1KG



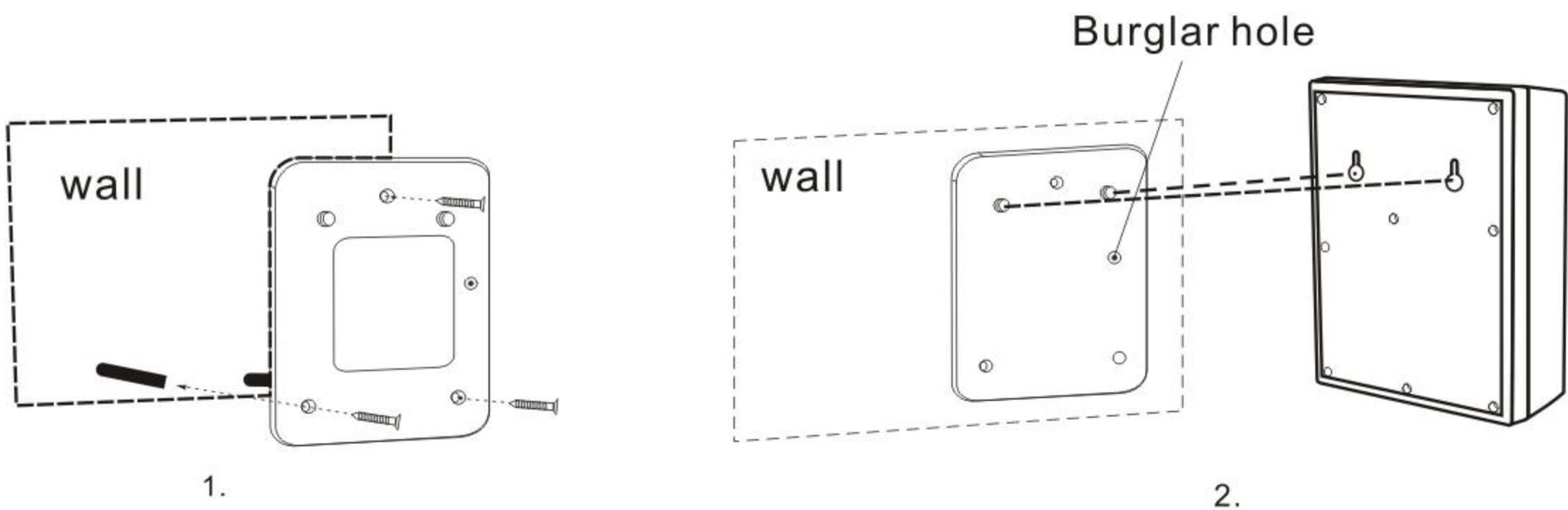
1. First use the key to open the cover.



4. Plug in, set its working time and let it work.

3. Fill oil inside the bottle, fix the bottle into device, close the cover.

2. Then take out the essential oil bottle.



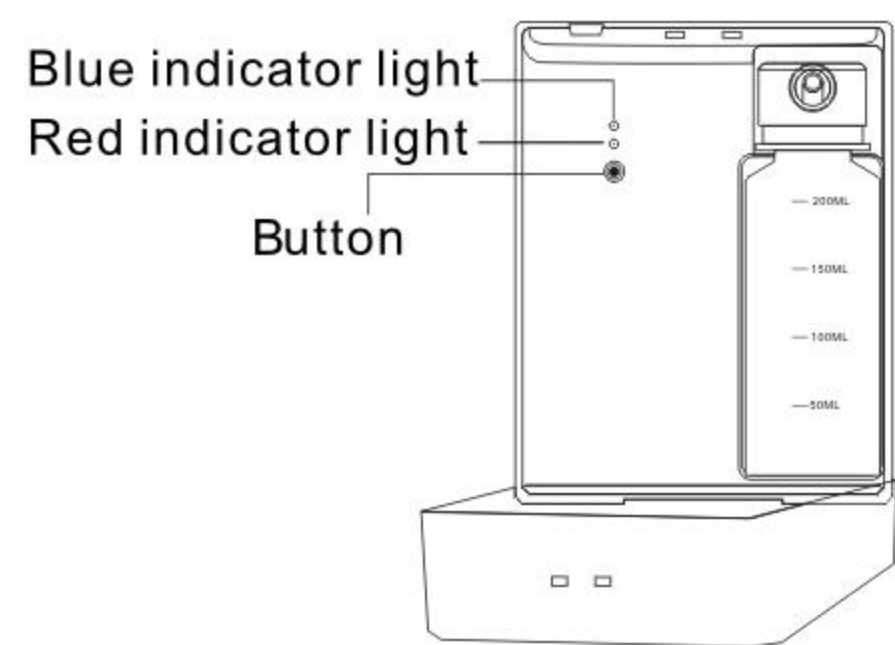
1.

2.



## Button operation demonstration:

---



## Button function:

Short press: adjust the fan gear, the gears are: low gear, high gear, off.

Long press: the device enters into test operation function, works for 15 seconds.

## Indicator light display

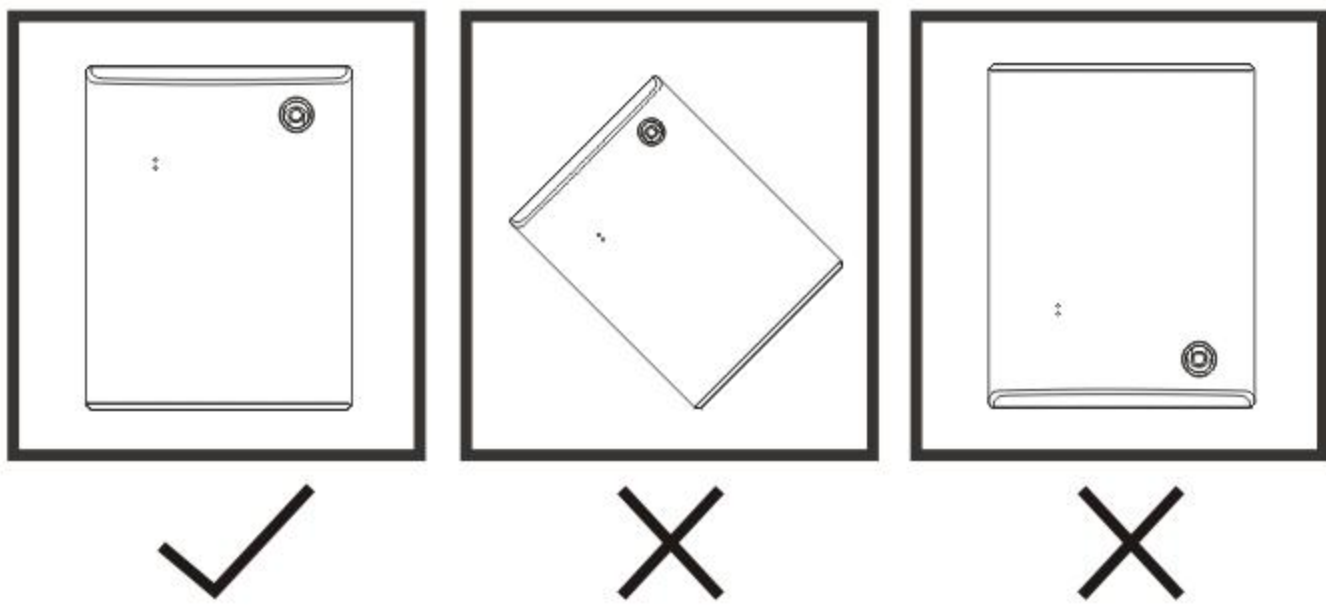
Blue indicator light,bluetooth signal receiving light. When the APP is connecting and successfully connected, the Bluetooth light is always on. A command is sent by the APP each time, the blue light flashes three times, indicating the setting is successful. If no command is sent for more than 10 minutes during successful connection, Bluetooth will automatically disconnect. In non-Bluetooth connection status, the blue light is off.

Red indicator light,the device working light. When the device is in operation, the red light flashes once every 15 seconds.

## ⚠ Warning

---

1. After installation, please keep the machine vertical. Leaning or Flipping will cause oil leakage and damage the machine.
2. If you are not a technician, you must not modify, disassemble or repair the device. If the device breaks down, please contact our technical staff in time.



## Clean the device

---

### When the following happens, the device needs to be cleaned

1. You are going to change another essential oil to use;
2. The amount of atomizing is getting weaker and weaker;



## Cleaning steps

1. Take off the atomizer head,take out the oil bottle ;
2. Pour appropriate amount of alcohol into the oil bottle, install it on the device to work 5-10 times to prevent cross-odor;
3. Cleaning is finished after oil bottle drying.

## Troubleshooting

---

Before preparing to repair the machine, first try to solve the problem according to the following methods.

Problem	Solution
No fogging	1. Check whether the air outlet seal is damaged. 2. Check whether the device is in "OFF" state. 3. Check whether the air pump is working, or replace the atomizing nozzle. 4. Check whether the air pipe connected to the air pump is sealed or damaged.
Small fog	1. Check whether the air outlet seal is damaged. 2. Check whether the atomizing nozzle is blocked. 3. Check whether the atomizing nozzle inside is loose, or replace the atomizing nozzle.
Oil leak	1.Check whether the atomizing nozzle is damaged. 2.Check whether the gasket damaged need to replace. 3.Check whether the essential oil bottle and the atomizing head are parallel or tighten.
Abnormal noise	1. Check if the air pump is loose, then fix the air pump again. 2. Check whether the air pump is damaged, replace with a new air pump.

---

## After-sales service

---

◆ The equipment is guaranteed within one year from the date of sale, but it does not guarantee the vulnerable parts such as the casing, wires and external pipes, and the damage caused by man-made or accidents is not covered by the warranty. If the warranty period is exceeded, the maintenance will be paid.

◆ If you encounter any after-sales problems, you can contact the authorized sales service providers in various regions, or contact our sales center directly.

This device complies with Part 15 of the FCC Rules. Operation is subject to the following two conditions: (1) this device may not cause harmful interference, and (2) this device must accept any interference received, including interference that may cause undesired operation.

Changes or modifications to this unit not expressly approved by the party responsible for compliance could void the user's authority to operate the equipment.

NOTE: This equipment has been tested and found to comply with the limits for a Class B digital device, pursuant to Part 15 of the FCC Rules. These limits are designed to provide reasonable protection against harmful interference in a residential installation. This equipment generates, uses and can radiate radio frequency energy and, if not installed and used in accordance with the instructions, may cause harmful interference to radio communications. However, there is no guarantee that interference will not occur in a particular installation. If this equipment does cause harmful interference to radio or television reception, which can be determined by turning the equipment off and on, the user is encouraged to try to correct the interference by one or more of the following measures:

- Reorient or relocate the receiving antenna.
- Increase the separation between the equipment and receiver.
- Connect the equipment into an outlet on a circuit different from that to which the receiver is connected.
- Consult the dealer or an experienced radio/TV technician for help.

This device and its antenna(s) must not be co-located or operation in conjunction with any other antenna or transmitter.

#### Radiation Exposure Statement

The device has been evaluated to meet general RF exposure requirement. in portable exposure condition without restriction.