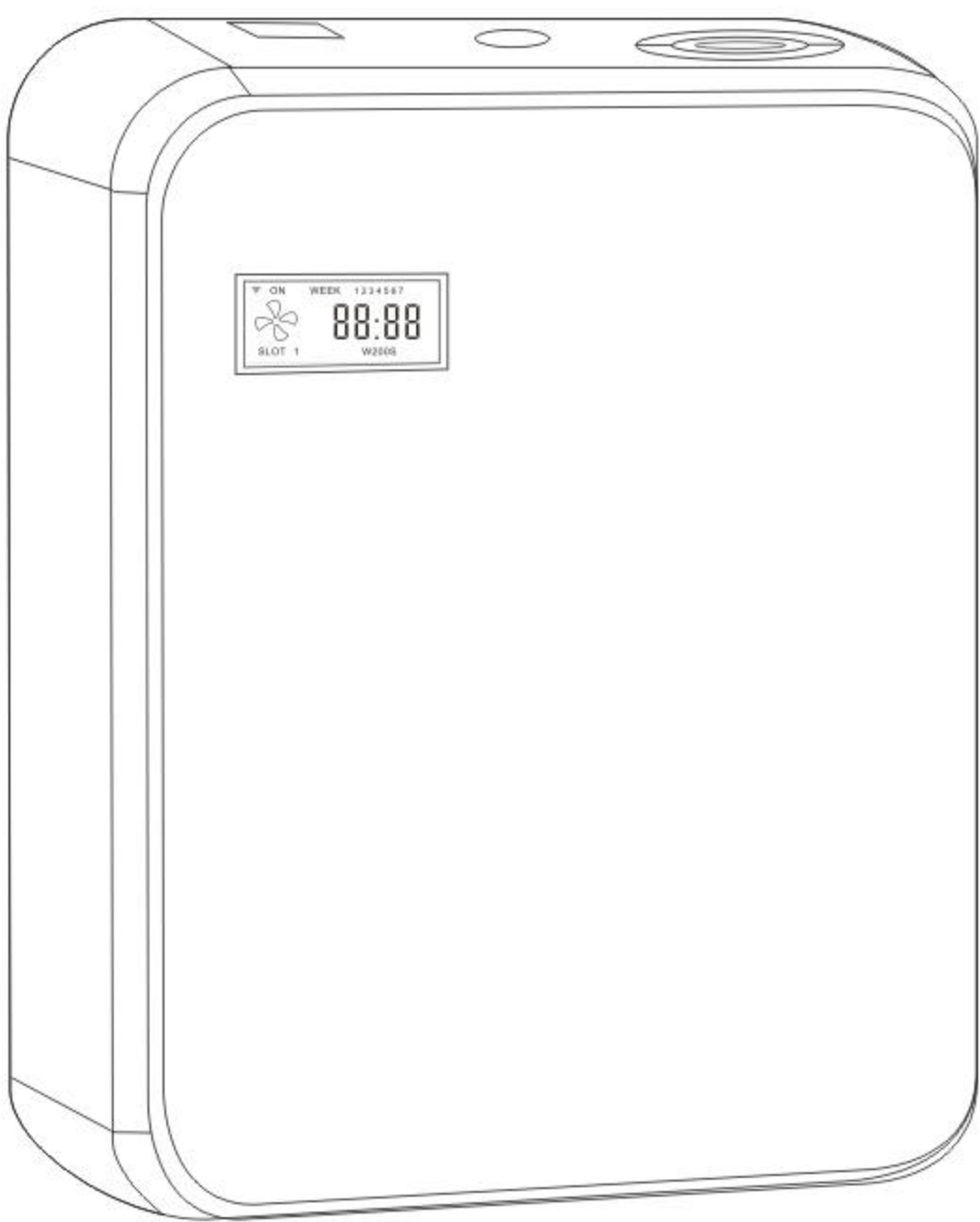


Product Manual



App download



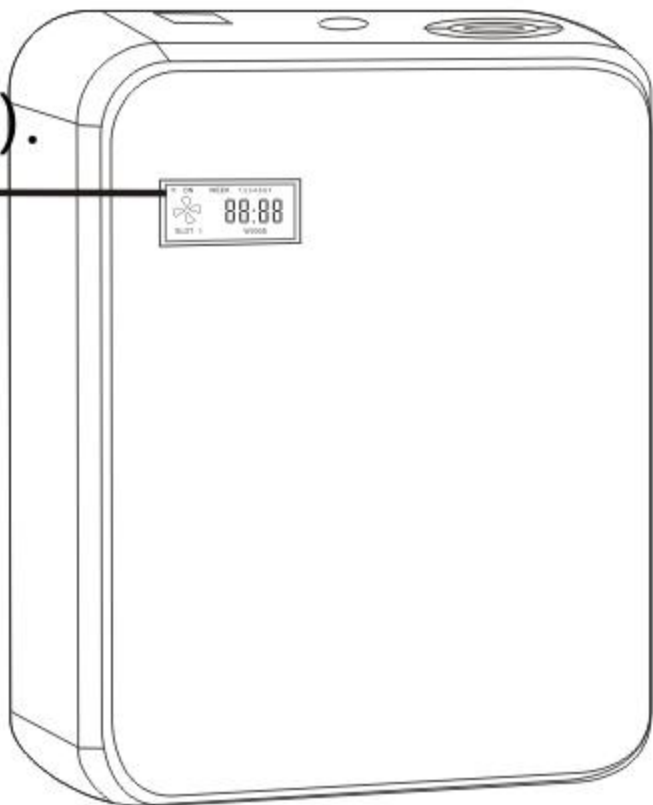
APP icon:



Notice: IOS users search Aroma IOT on the Apple Store to download.
Android users scan the QR code to download, IOS users also can scan to download.

Tips

Press [MODE] key 10 seconds, WIFI prompt icon displays and flashes continuously,it always displays after connecting (if not disconnected), no displays after WIFI disconnection(version without WIFI no icon).



Atomization level and working parameters

Working time /single times (s)	10s-200s (adjustable)
Interval time/single time (s)	10s-200s (adjustable)

Instruction

First step: Press device [MODE] key 10 seconds for distribution network mode.

2、WIFI prompt icon display and flash continuously

3、Time slot display

1、Press device [MODE] key 10 seconds

WIFI ON

WEEK 1 2 3 4 5 6 7

88:88

SLOT 1

W200S

MODE SET UP DOWN

4、Date display

5、Working time (atomizing time)

APP operation demonstration:

Arøma

+86 *****

Password

Remember password

Log In

Register account Forget password

Arøma IoT

Search devices...

Add Device

All Device Landscape Vertical

Add a smart fragrance system

1. Turn on the mobile phone, connect the signal with good signal, non-5G, non-Chinese name Wi-Fi
2. Connect the device to the power supply, press and hold the switch until the indicator light flashes quickly.

Make sure the above steps are completed

Next

Notice: new user downloads the app first, use mobile number to register, then sign in

Arøma IoT

Search devices...

Add Device

All Device Landscape Vertical

Front extension equipment ***** the company On

Liquid 100%

Authorized

Click the icon, the liquid level, network status, on/off can be controlled

green colors means its on, grey means off

Networked device icon (display)

Essential oil remaining

Add a smart fragrance system

WiFi Config

Routers, phones, and devices as close as possible

Wi-Fi Name >

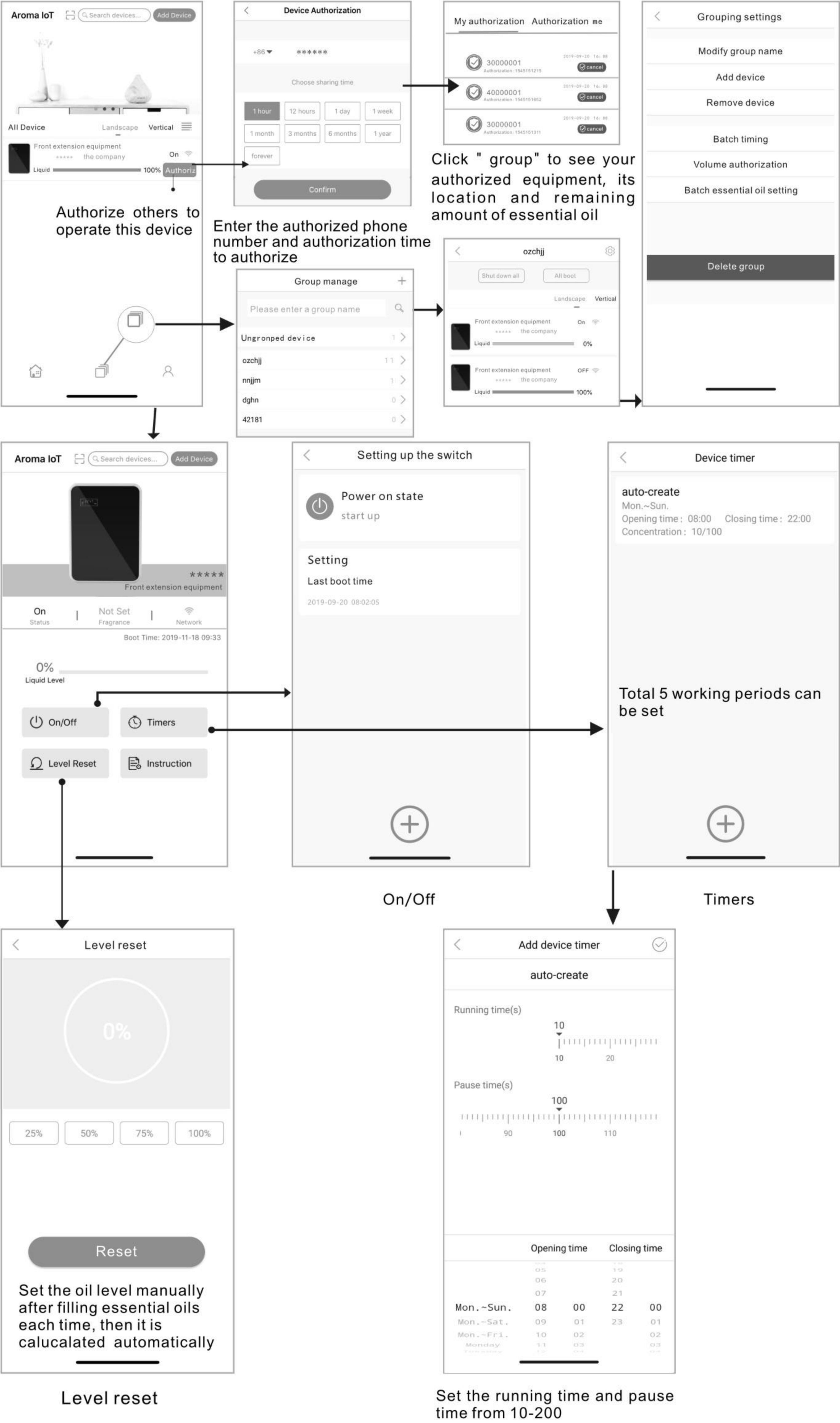
Wi-Fi Password

WIFI Config

Choose 2.4G not 5G WiFi network to connect

Notice: when configuring the WiFi network, ensure the WIFI signal is very strong, it is best to configure the network near the router.
If configure the network failed, recommend to try again

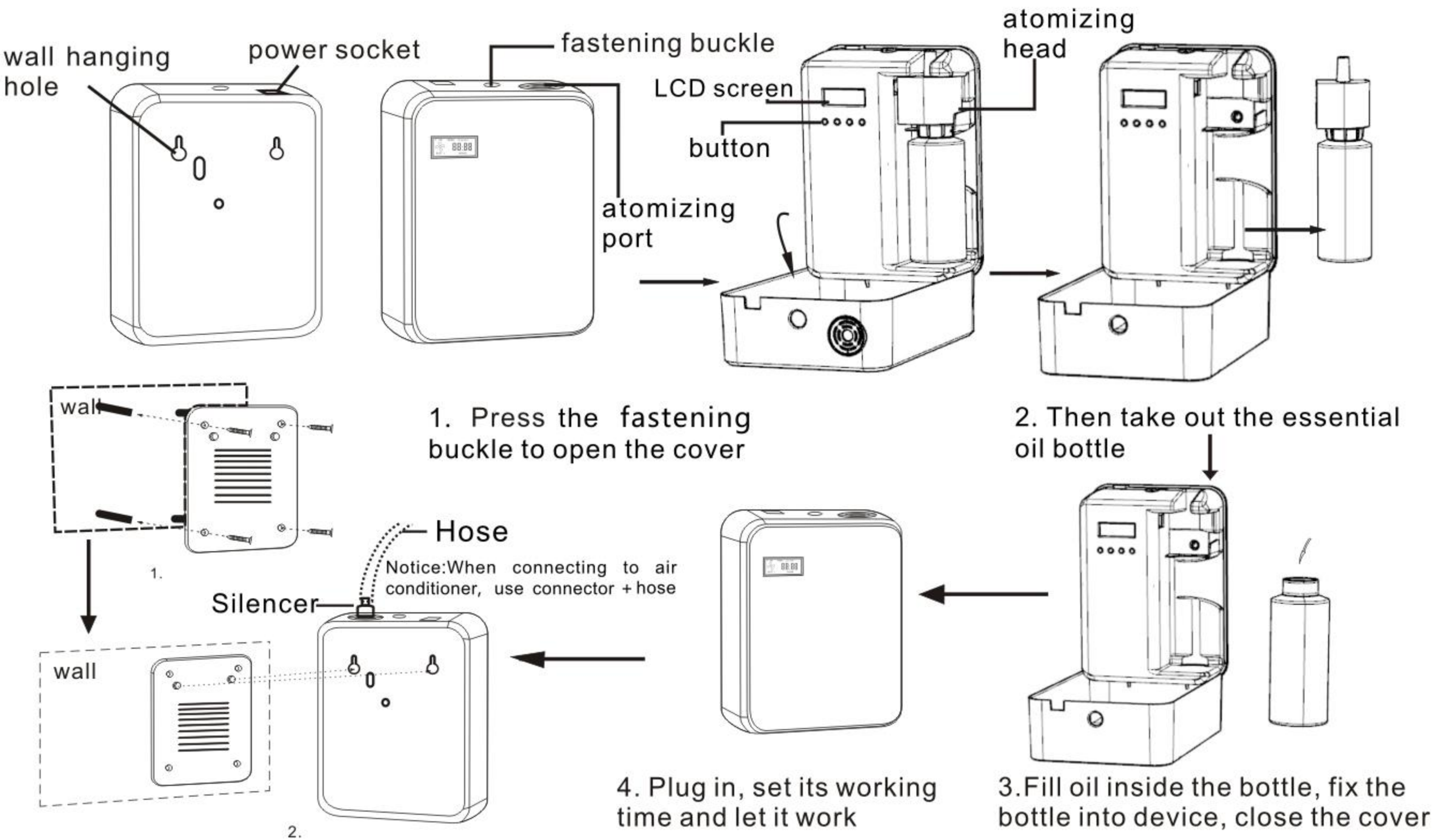
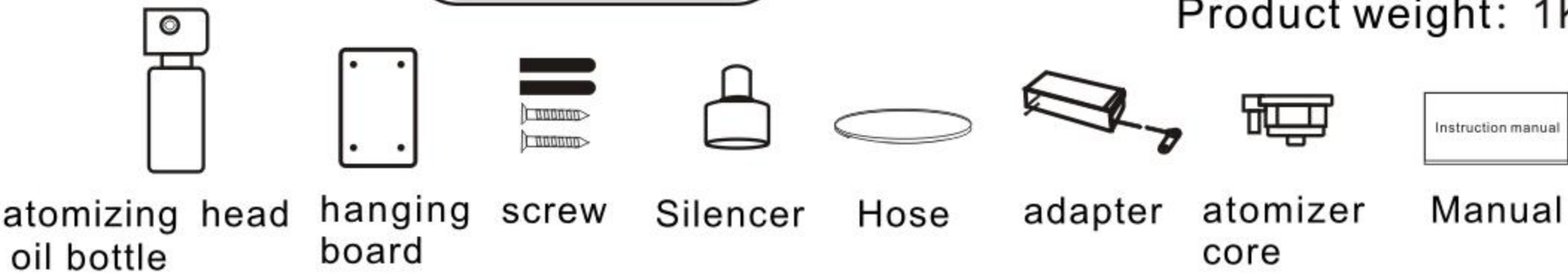
APP operation demonstration:



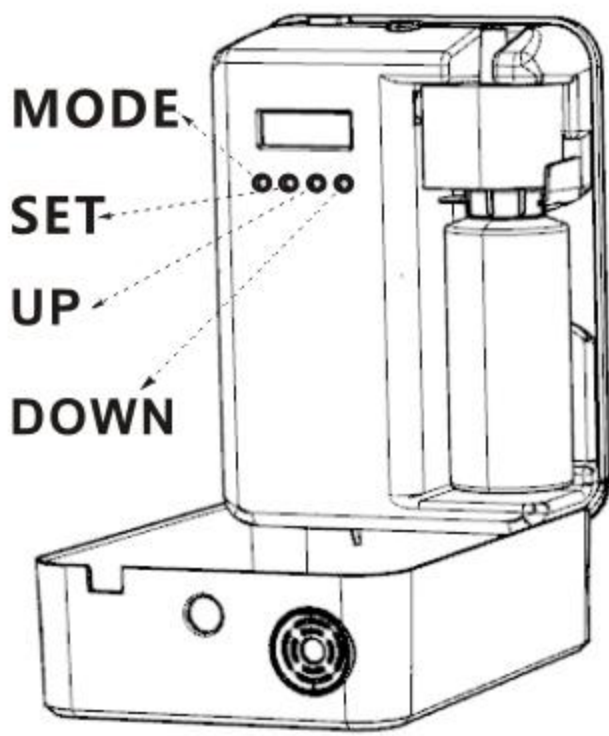
Parameter



Model No.: 500AF
Product Size: 154*70*214mm
Voltage: DC12V
Power: 8W
Coverage: 300-500 m³
Capacity: 200ml
Product weight: 1KG



Button operation demonstration:



Button function:

[MODE]: long press: 10s for WIFI connecting, short press: enter into timer setting state.
[SET]: long press: control built-in fan start (stop) time (with memory function), short press: enter into timer setting state.
[UP]: long press: test function, air pump and fan run for 15 seconds, short press: timer/time setting "+" function.
[DOWN]: Long press: lock/unlock the device, short press: timer-time setting "-" function.

The device can be set 5 different operating time periods, and the working day can be selected according to multiple options.

[MODE]: Switch for different options, start and stop time for SLOT 1(the first time period), fragrance intensity. Start and stop time for SLOT 2(the second time period), fragrance intensity. Start and stop time for SLOT 3(the third time period), fragrance intensity. Start and stop time for SLOT 4(the forth time period), fragrance intensity. Start and stop time for SLOT 5(the fifty time period), fragrance intensity.WIFI version/long press 10s for WIFI network connecting.

[SET]: Enter the selection setting state, choose the setting content of the currently displayed page; including system time, date, intensity, etc.;

[UP]: adjust upwards, you can adjust the time, fragrance intensity, working date.

[DOWN]: adjustment downwards, you can adjust the time, fragrance intensity, working date.

Device button setting working periods instruction

Press the **[MODE]** key for the first time, the LCD screen displays **[SLOT 1 ON]**---start working time for the first time period; press the **[SET]** key to enter the adjustment state; adjust the hour, minute and the working date group by **[UP/DOWN]** key;

Press the **[MODE]** key for the second time, the LCD screen displays **[SLOT 1 OFF]**---the stop time of the first time period; press the **[SET]** key to enter the adjustment state; adjust the hour and minute by **[UP/DOWN]** key;

Press the **[MODE]** key for the third time, the LCD screen displays **[SLOT 1 WEEK]**---continuous working frequency setting. Adjust the working frequency from 10 to 200 by press **[UP/DOWN]** key, each time pressing it changes ± 10 .

Press the **[MODE]** key for the fourth time, the LCD screen displays **[SLOT 1]**-stop working frequency setting, adjust the stop frequency from 10 to 200 seconds by **[UP/DOWN]** key, each time pressing it changes ± 10 .

Press the **[MODE]** key for the fifth time, the LCD screen displays **[SLOT 2 ON]** --- start to working time for the second time period, press the **[SET]** key to enter the adjustment state; adjust the hour, minute, and the working date group by **[UP/DOWN]** key;

To continuous setting, same as the above process. Until 5 time periods are finished.

Notice:

When setting its working time period, the shutdown time cannot precede the start-up time;

If the working time period cross 00:00, it needs to be set for two time periods.

Such as the working time is: 21:00-9: 00

It should set 2 times period, the first time period is: 21:00-23:59; the second time period is: 00:01-9:00

Set the device system time:

Adjust the display time of the device to be consistent with the actual local time. The system time is 24H.

To show its state, press the **[SET]** key, the hour digits on the LCD screen flash, press **[UP / DOWN]** key to adjust the hour.

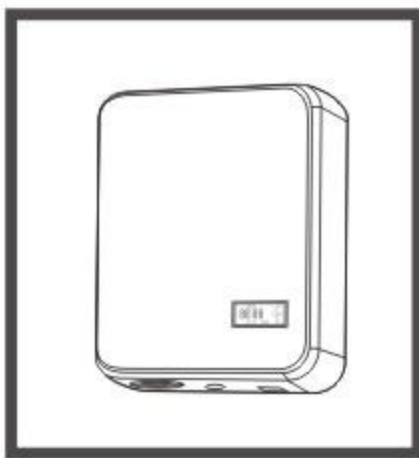
[Date option]: You can choose a combination of working days.

(Monday to Sunday) (Monday to Saturday) (Monday to Friday); (Monday) (Tuesday) (Wednesday) (Thursday) (Friday) (Saturday) (Sunday);

Monday to Wednesday) (Tuesday to Thursday) (Saturday to Sunday); (Monday, Wednesday and Friday) (Tuesday, Thursday and Saturday)

⚠ Warning

1. After installation, please keep the machine vertical. Leaning or Flipping will cause oil leakage and damage the machine.
2. If you are not a technician, you must not modify, disassemble or repair the device. If the device breaks down, please contact our technical staff in time.



Clean the device

When the following happens, the device needs to be cleaned

1. You are going to change another essential oil to use;
2. The amount of atomizing is getting weaker and weaker;

Cleaning steps

- 1. Unplug the atomizing nozzle and twist the oil bottle;
- 2. Pour appropriate amount of alcohol into the oil bottle, install it on the device to work 5-10 times to prevent cross-odor;
- 3. End the cleaning after drying.

Troubleshooting

Before preparing to repair the machine, first try to solve the problem according to the following methods.

Problem	Solution
No fogging	1. Check whether the air outlet seal is damaged. 2. Check whether the device is in "OFF" state. 3. Check whether the air pump is working, or replace the atomizing nozzle. 4. Check whether the air pipe connected to the air pump is sealed or damaged.
Small fog	1. Check whether the air outlet seal is damaged. 2. Check whether the atomizing nozzle is blocked. 3. Check whether the atomizing nozzle inside is loose, or replace the atomizing nozzle.
Leak oil	1.Check whether the atomizing nozzle is damaged. 2.Check whether the gasket damaged need to replace. 3.Check whether the essential oil bottle and the atomizing head are parallel or tighten.
Abnormal noise	1. Check if the air pump is loose, then fix the air pump again. 2. Check whether the air pump is damaged, replace with a new air pump.

After-sales service

- ◆ The equipment is guaranteed within one year from the date of sale, but it does not guarantee the vulnerable parts such as the casing, wires and external pipes, and the damage caused by man-made or accidents is not covered by the warranty. If the warranty period is exceeded, the maintenance will be paid
- ◆ If you encounter any after-sales problems, you can contact the authorized sales service providers in various regions, or contact our sales center directly.

This device complies with Part 15 of the FCC Rules. Operation is subject to the following two conditions: (1) this device may not cause harmful interference, and (2) this device must accept any interference received, including interference that may cause undesired operation.

Changes or modifications to this unit not expressly approved by the party responsible for compliance could void the user’s authority to operate the equipment.

NOTE: This equipment has been tested and found to comply with the limits for a Class B digital device, pursuant to Part 15 of the FCC Rules. These limits are designed to provide reasonable protection against harmful interference in a residential installation. This equipment generates, uses and can radiate radio frequency energy and, if not installed and used in accordance with the instructions, may cause harmful interference to radio communications. However, there is no guarantee that interference will not occur in a particular installation. If this equipment does cause harmful interference to radio or television reception, which can be determined by turning the equipment off and on, the user is encouraged to try to correct the interference by one or more of the following measures:

- Reorient or relocate the receiving antenna.

- Increase the separation between the equipment and receiver.
- Connect the equipment into an outlet on a circuit different from that to which the receiver is connected.
- Consult the dealer or an experienced radio/TV technician for help.

This device and its antenna(s) must not be co-located or operation in conjunction with any other antenna or transmitter.

Radiation Exposure Statement(>20cm)

To maintain compliance with FCC’s RF Exposure guidelines, This equipment should be installed and operated with minimum distance of 20cm from your body.