

# 天线测试报告

Antenna Test Report

*TC: 海途乐*

*MN: T01*

*RF: 刘磊确*

*MD: 黄清清*

Xyc Technologies Corp.

Room 1506, Tangwei Stock Business Building, Tangwei Community,  
Fuhai Street, Bao'an District, Shenzhen, China

*Date: 2023. 11. 17*

*REV :V1. 0*

# 测试信息

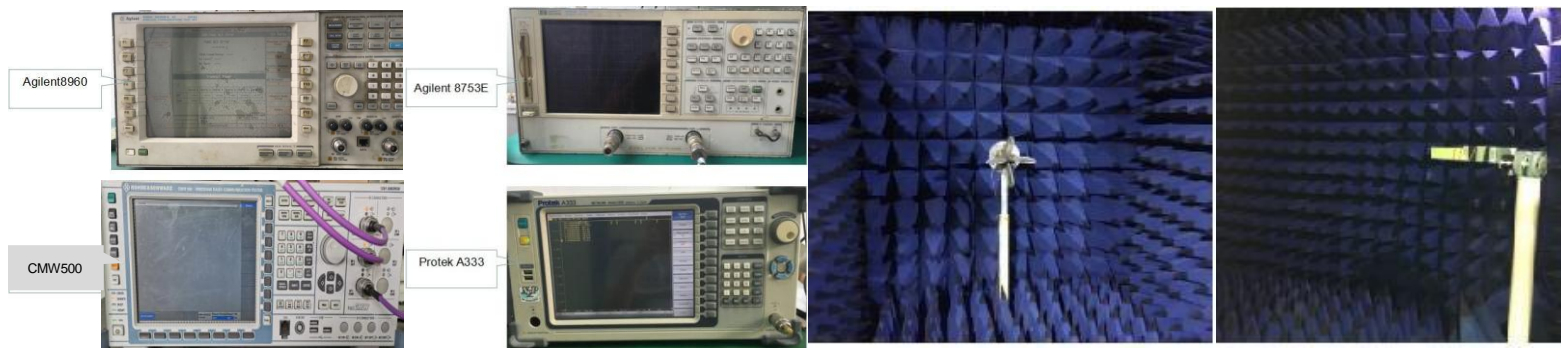
Test information

	Antenna band	Antenna state	Antenna form	Match changes	Note
Main ANT	2G				
	3G			NO	
	4G				
AUX ANT	BT/WIFI	2.4/5G	FPC	PIFA	NO
	GPS	1.575G	FPC	PIFA	NO
	DIV				NO

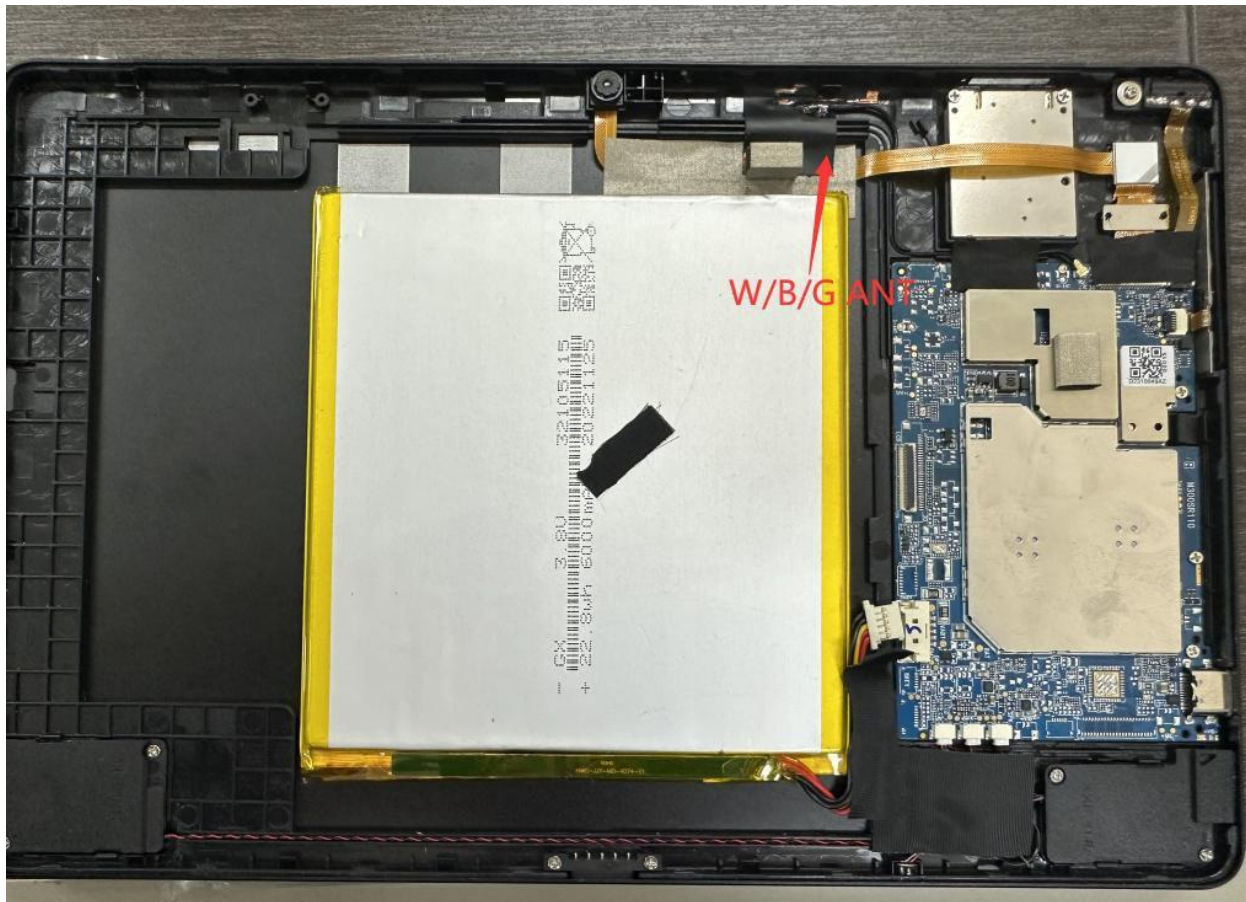
# 测试环境

## Test environment

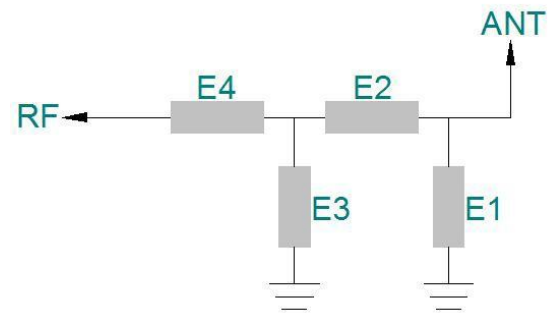
	测试项目	测试设备
S参数 (S-parameter)	1. 电压驻波比 (VSWR) 2. 回波损耗 (Rrtun Loss)	网络分析仪: Agilent8753ES
2. 有源测试 (Active)	1. 发射功率 (TRP) 2. 接收灵敏度 (TIS) 3. 屏灭/屏亮	1. 暗室: 5*3*3m (3D) Chamber 2. 综测仪: Agilent8960 CMW500
3. 无源测试 (Passive)	1. 天线增益 (Gain) 2. 天线效率 (Efficiency)	1. 暗室: 5*3*3m (3D) Chamber 2. 网络分析仪: Agilent 8753ES



天线位置  
Antenna position



# 匹配电路 Matching circuit



	电容 ( PF )	电感 ( NH )
E1(0402)		
E2(0402)		
E3(0402)		
E4(0402)		

有源测试数据  
Active test data

802.11b	Frequency	TRP		TIS	
	2412	CH1 11Mbps	12.25	CH1 11Mbps	-80.25
2437	CH6 11Mbps	13.36	CH6 11Mbps	-80.36	
2467	CH11 11Mbps	12.58	CH11 11Mbps	-80.14	
802.11a		TRP		TIS	
	5180	CH36 6Mbps	5.81	CH36 54Mbps	-67.28
	5300	CH60 6Mbps	7.8	CH60 54Mbps	-68.5
	5805	CH161 6Mbps	6.77	CH161 54Mbps	-66.73

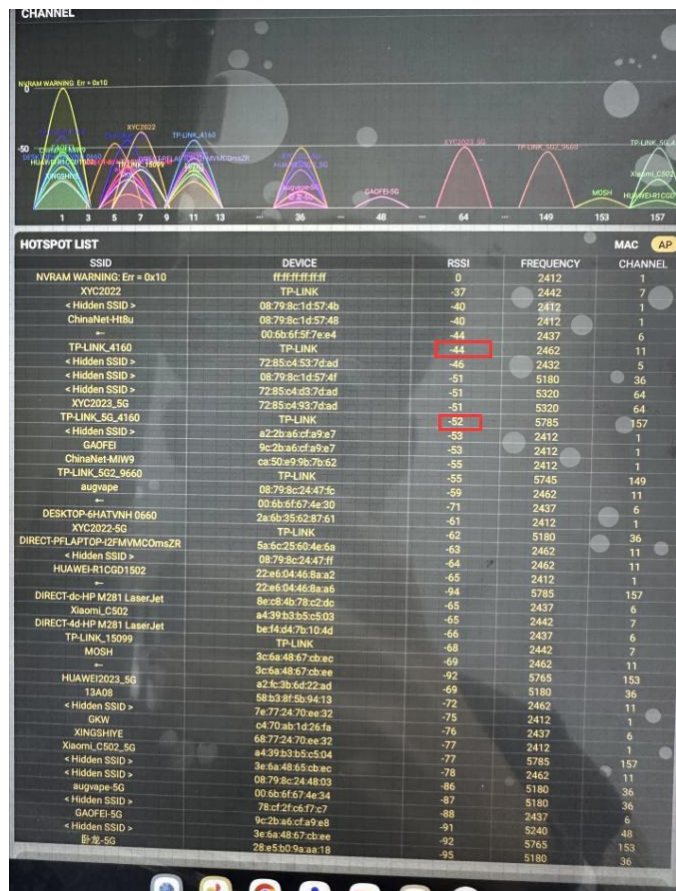
# GPS搜星测试

## GPS star search test



# Wifi/BT天线实测

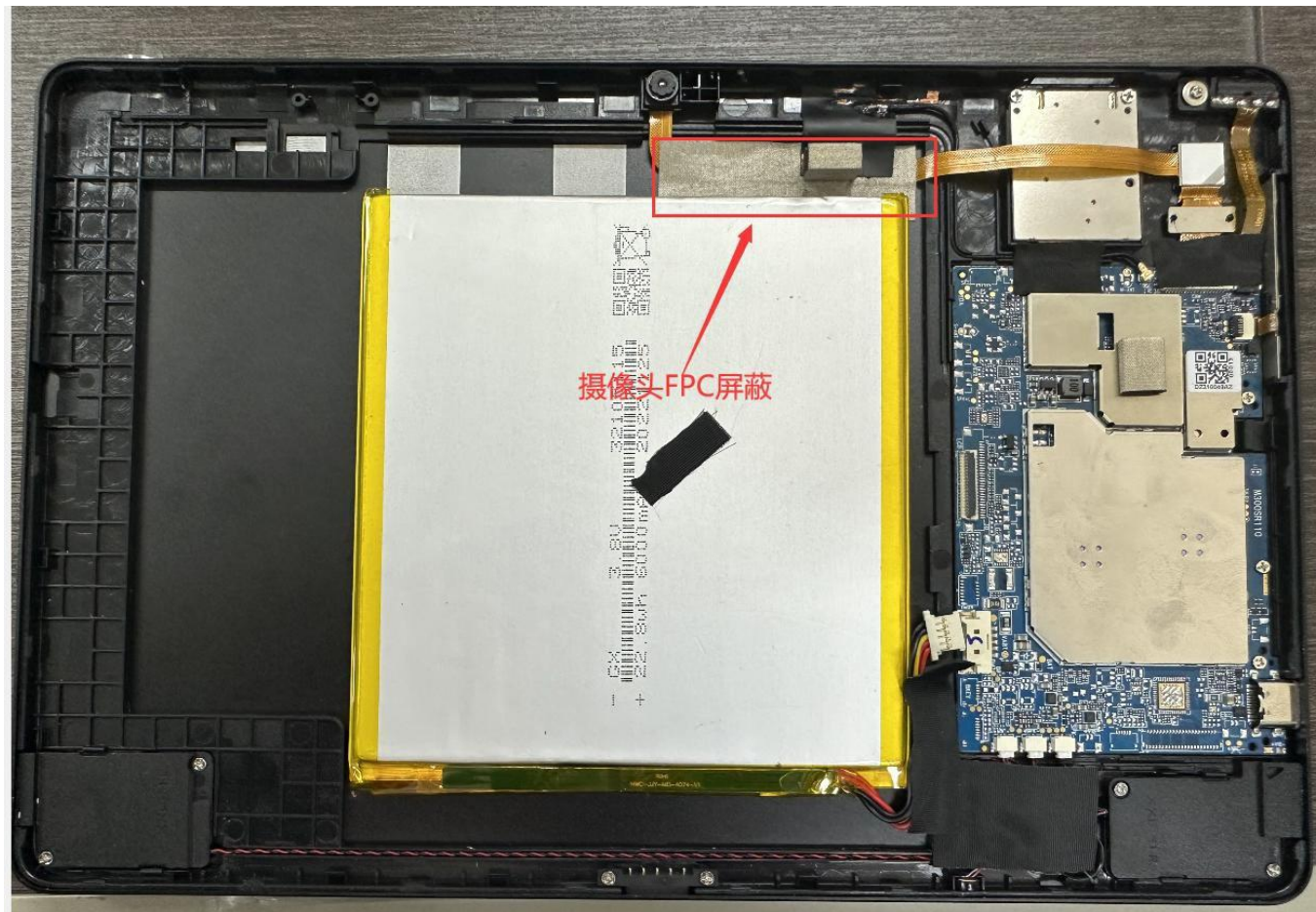
## Wifi Antenna test





## 环境处理

Environmental treatment



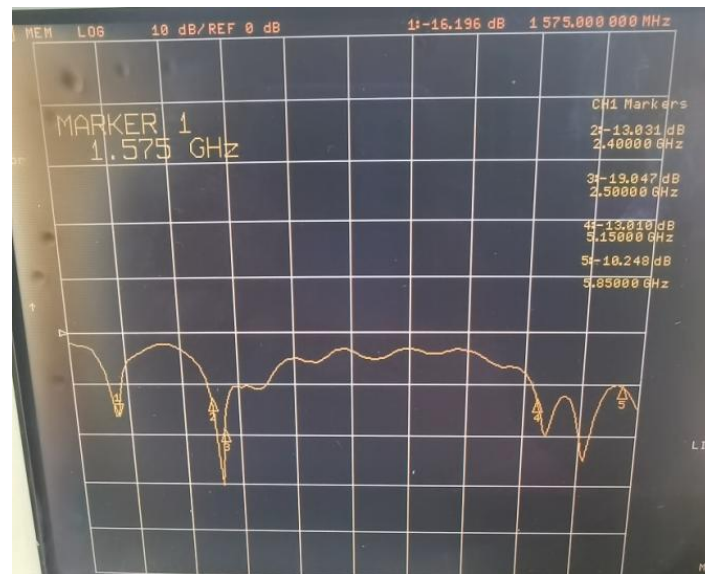
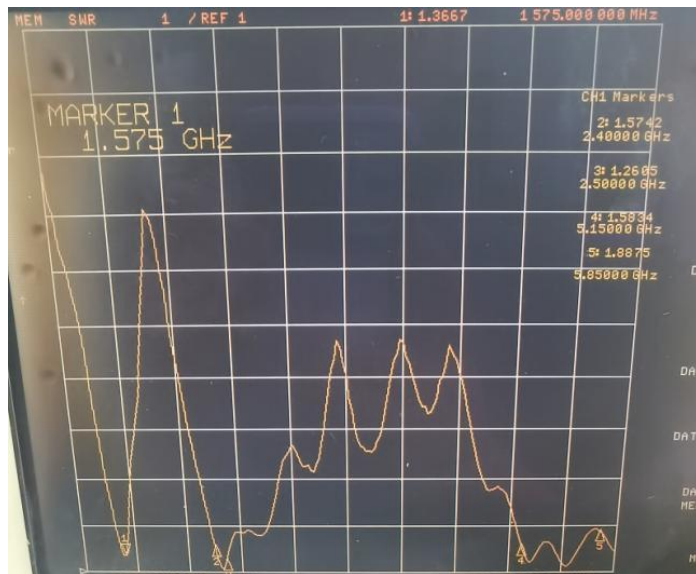
## 环境处理

Environmental treatment



无源测试数据  
Passive test data

ANT1 S11-VSWR&Return Loss



Frequency (MHZ)	1575	2400	2500	5150	5850
VSWR	1.36	1.57	1.26	1.58	1.88
Return Loss (DB)	-16.19	-13.03	-19.04	-13.01	-10.24

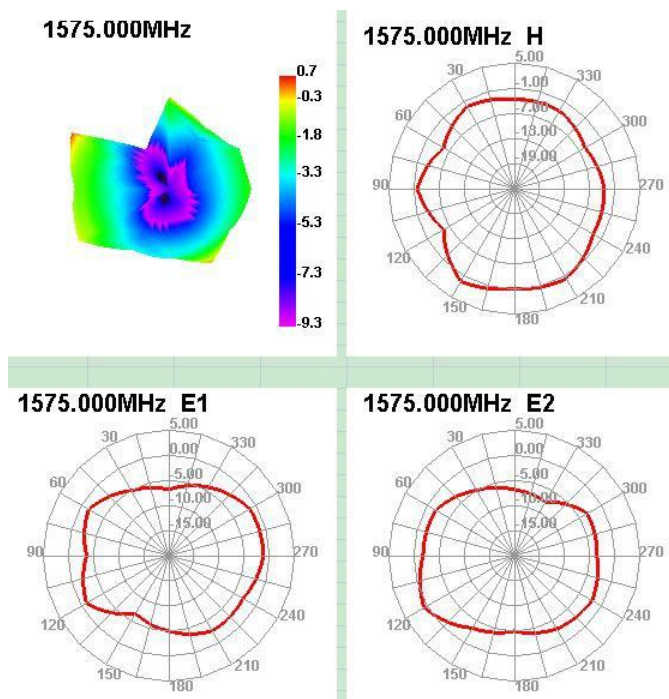
无源测试数据  
Passive test data

ANTI GAIN&Efficiency-GPS

1570	47.24	-3.26	0.29	-1.86	20.83	26.406	0.29	-9.57	3.55	90	41.29	40.82
1575	51.35	-2.89	0.71	-1.44	22.746	28.603	0.71	-9.71	3.61	60	41.49	41.04
1580	53.88	-2.69	0.91	-1.24	23.927	29.954	0.91	-9.9	3.59	60	41.61	41.18

无源测试数据  
Passive test data

ANT1 Direction of figure (GPS)



无源测试数据  
Passive test data

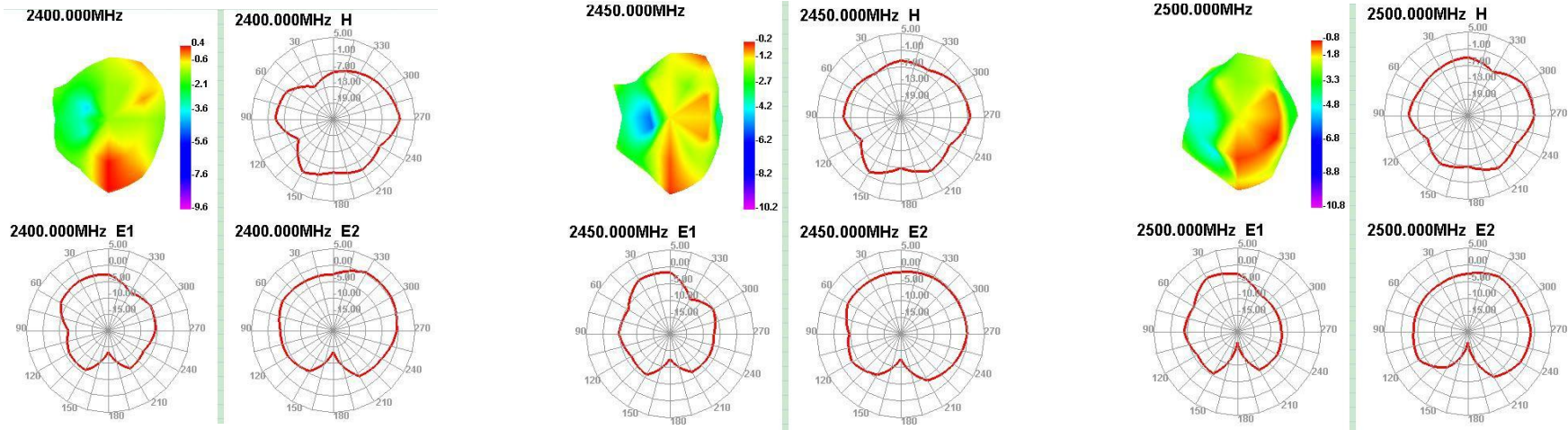
ANT1 GAIN&Efficiency-WIFI2.4G/BT

Passive Test For WIFI2.4

Freq (MHz)	Effi (%)	Effi (dB)	Gain (dBi)	Gain (dBd)	UHS (%)	DHS (%)	Max (dB)	Min (dB)	Directivity (dBi)	Beamwidth (3dB)	AttH (dB)	AttV (dB)
2400	42.45	-3.72	0.41	-1.74	25.058	17.397	0.41	-19.49	4.13	60	45.79	46.02
2410	41.54	-3.82	0.2	-1.95	24.267	17.276	0.2	-19.8	4.01	60	46	46.28
2420	40.06	-3.97	-0.1	-2.25	23.091	16.966	-0.1	-18.81	3.87	60	45.66	45.93
2430	41.26	-3.84	-0.12	-2.27	23.331	17.931	-0.12	-17.58	3.72	60	45.82	46.17
2440	43.31	-3.63	-0.14	-2.29	23.932	19.375	-0.14	-16.75	3.5	30	45.92	46.28
2450	43.6	-3.61	-0.17	-2.32	23.519	20.08	-0.17	-15.73	3.43	30	45.95	46.38
2460	42.72	-3.69	-0.39	-2.54	22.584	20.138	-0.39	-15.42	3.3	30	45.93	46.31
2470	43.63	-3.6	-0.31	-2.46	22.725	20.91	-0.31	-14.58	3.29	30	46.24	46.64
2480	43.55	-3.61	-0.23	-2.38	22.379	21.171	-0.23	-15.45	3.38	30	46.17	46.56
2490	42.6	-3.71	-0.33	-2.48	21.676	20.927	-0.33	-16.35	3.38	30	46.38	46.78
2500	38.72	-4.12	-0.83	-2.98	19.553	19.164	-0.83	-16.85	3.29	30	46.26	46.65

无源测试数据  
Passive test data

ANT1 Direction of figure(2.4/BT)



无源测试数据  
Passive test data

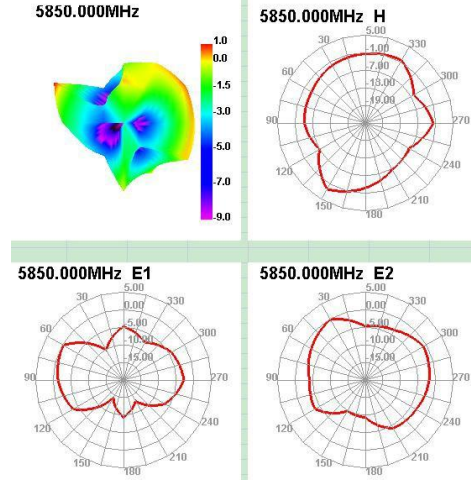
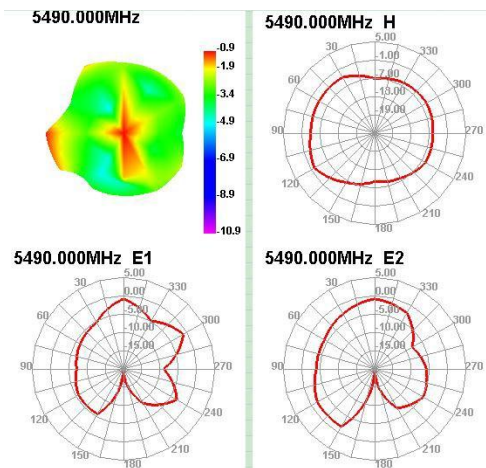
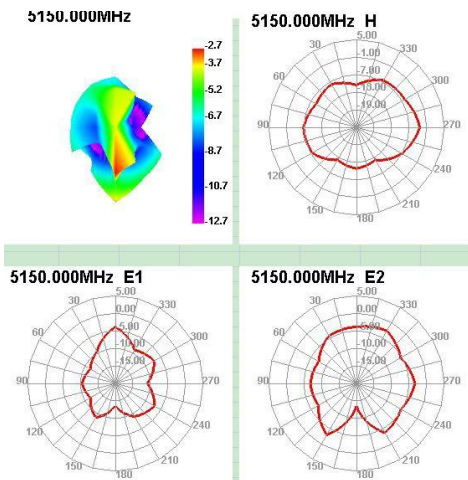
ANT1 GAIN&Efficiency-WIFI 5G

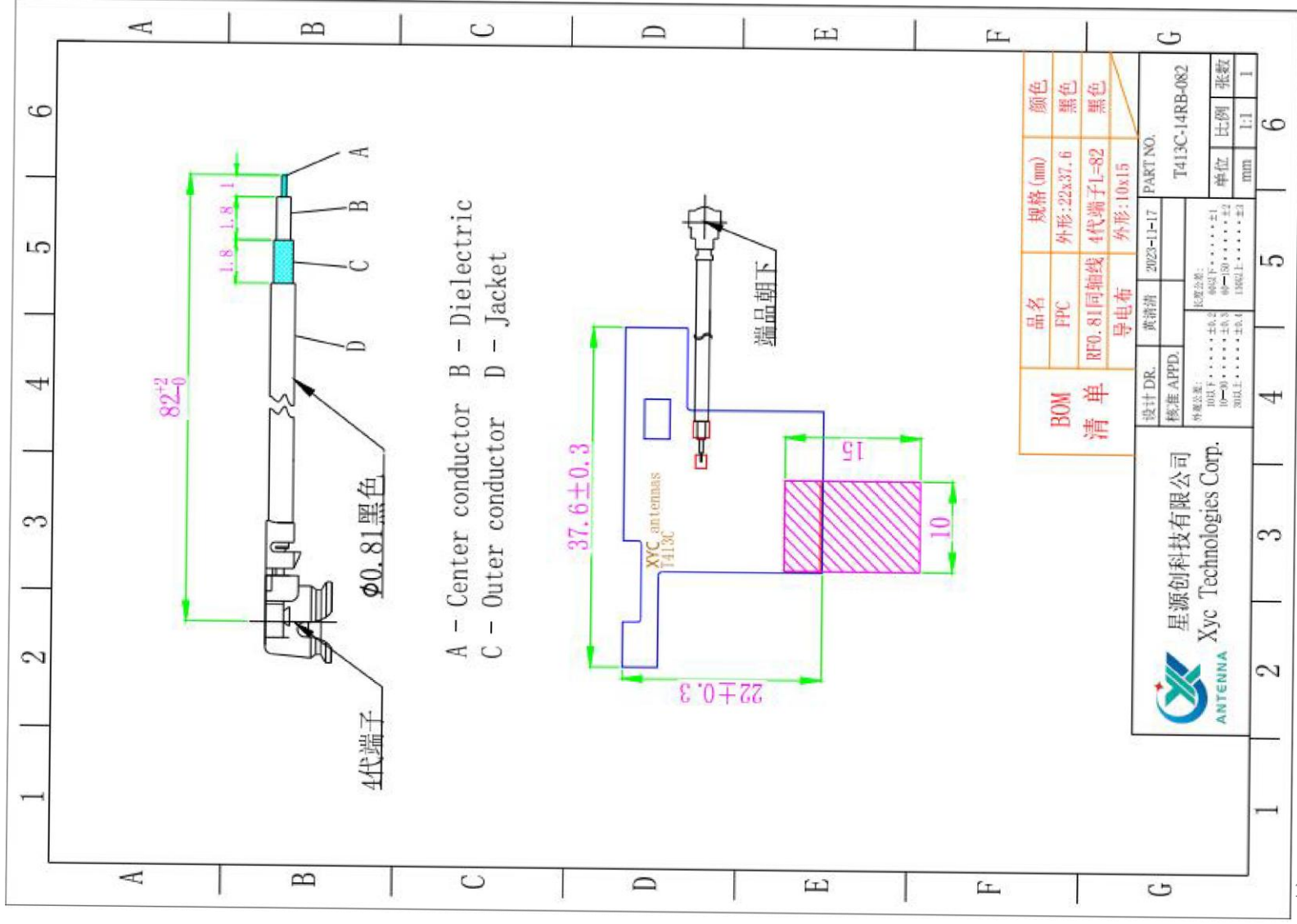
Passive Test For WIFI5G												
Freq (MHz)	Effi (%)	Effi (dB)	Gain (dBi)	Gain (dBd)	UHS (%)	DHIS (%)	Max (dB)	Min (dB)	irectivity (dBi)	Beamwidth (3dB)	AttH (dB)	AttV (dB)
5150	17.66	-7.53	-2.72	-4.87	8.88	8.783	-2.72	-14.28	4.81	0	50.12	49.7
5170	20.08	-6.97	-2.56	-4.71	10.126	9.957	-2.56	-13.62	4.41	0	50.36	50
5190	21.37	-6.7	-2.65	-4.8	10.794	10.577	-2.65	-14.85	4.05	0	50.7	50.23
5210	23.26	-6.33	-2.35	-4.5	11.748	11.517	-2.35	-14.15	3.98	0	50.57	50.18
5230	25.08	-6.01	-1.73	-3.88	12.676	12.405	-1.73	-14.46	4.28	30	50.51	50.17
5250	25.02	-6.02	-1.52	-3.67	12.802	12.215	-1.52	-17.24	4.5	30	50.39	50.09
5270	27.56	-5.6	-1.35	-3.5	14.132	13.424	-1.35	-19.47	4.24	30	50.63	50.38
5290	29.5	-5.3	-0.75	-2.9	14.969	14.53	-0.75	-24.87	4.55	30	50.7	50.48
5310	29.53	-5.3	-0.35	-2.5	15.01	14.517	-0.35	-26.43	4.95	30	50.43	50.35
5330	29.35	-5.32	-0.35	-2.5	15.001	14.354	-0.35	-18.13	4.98	30	50.85	50.78
5350	31.31	-5.04	-0.09	-2.24	15.881	15.432	-0.09	-15.05	4.95	30	50.95	50.94
5370	30.08	-5.22	-0.39	-2.54	14.907	15.176	-0.39	-13.55	4.83	30	50.78	50.82
5390	28.46	-5.46	-0.59	-2.74	14.009	14.449	-0.59	-13.49	4.87	30	50.6	50.57
5410	32.36	-4.9	-0.38	-2.53	16	16.359	-0.38	-14.23	4.52	0	51.24	51.15
5430	28.48	-5.45	-1.31	-3.46	14.186	14.291	-1.31	-16.51	4.15	0	50.81	50.82
5450	31.16	-5.06	-0.95	-3.1	15.521	15.636	-0.95	-15.89	4.12	0	50.78	50.92
5470	28.41	-5.47	-1.31	-3.46	14.172	14.237	-1.31	-17.23	4.16	0	51.02	50.92
5490	31.31	-5.04	-0.87	-3.02	15.674	15.638	-0.87	-20.98	4.17	0	51.11	50.98
5510	30.28	-5.19	-1.28	-3.43	15.337	14.945	-1.28	-21.52	3.91	0	51.07	51.05
5530	32.12	-4.93	-1.28	-3.43	16.331	15.784	-1.28	-18.52	3.65	60	51.51	51.37
5550	32.17	-4.93	-1.42	-3.57	16.463	15.707	-1.42	-17.86	3.5	60	51.7	51.57
5570	32.94	-4.82	-1.37	-3.52	16.999	15.942	-1.37	-18.53	3.45	60	51.5	51.41
5590	31.99	-4.95	-1.54	-3.69	16.717	15.271	-1.54	-15.4	3.41	60	51.59	51.64
5610	33.61	-4.74	-1.15	-3.3	18.146	15.461	-1.15	-15.69	3.59	120	51.19	51.24
5630	30.52	-5.15	-1.07	-3.22	17.009	13.516	-1.07	-16.5	4.08	0	51.19	51.18
5650	36.33	-4.4	0.06	-2.09	20.617	15.711	0.06	-16.73	4.46	0	51.27	51.35
5670	35.21	-4.53	0.05	-2.1	20.107	15.105	0.05	-19.99	4.58	0	51.87	52.03
5690	37.17	-4.3	0.28	-1.87	21.566	15.606	0.28	-21.01	4.58	0	51.65	51.78
5710	37.11	-4.31	0.46	-1.69	21.984	15.124	0.46	-19.13	4.77	0	51.72	51.82
5730	40.46	-3.93	0.99	-1.16	24.17	16.292	0.99	-18.71	4.92	0	51.44	51.54
5750	41.11	-3.86	1	-1.15	24.508	16.598	1	-18.73	4.87	0	51.34	51.37
5770	41.48	-3.82	1.16	-0.99	24.752	16.73	1.16	-17.4	4.98	0	51.02	51.06
5790	39.29	-4.06	1.01	-1.14	23.475	15.813	1.01	-16.25	5.06	60	51.25	51.33
5810	41.22	-3.85	1.22	-0.93	24.652	16.566	1.22	-14.92	5.07	30	51.4	51.47
5830	39.89	-3.99	1.01	-1.14	23.648	16.246	1.01	-14.55	5	30	51.9	51.91
5850	40.42	-3.93	1.04	-1.11	23.824	16.594	1.04	-15.11	4.97	30	51.77	51.94



无源测试数据  
Passive test data

ANT1 Direction of figure (5G)





BOM 清单	品名	规格(mm)	颜色
	FPC	外形:22x37.6	黑色
	RF0.81同轴线	4代端子L=82	黑色
	导电布	外形:10x15	

星源创科有限公司  
Xvc Technologies Corp.

设计 DR.	黄清清	2023-11-17	PART NO.
核准 APPD.			T413C-14RB-082
外置公差:			
100.F	±0.2	800.F	±1
10~90	±0.3	0~150	±2
300.L	±0.5	150.L	±3
		单位	张数
		mm	1:1
			1