

MS4 Digital Microscope (for IOS/Android)

Quick Start Guide

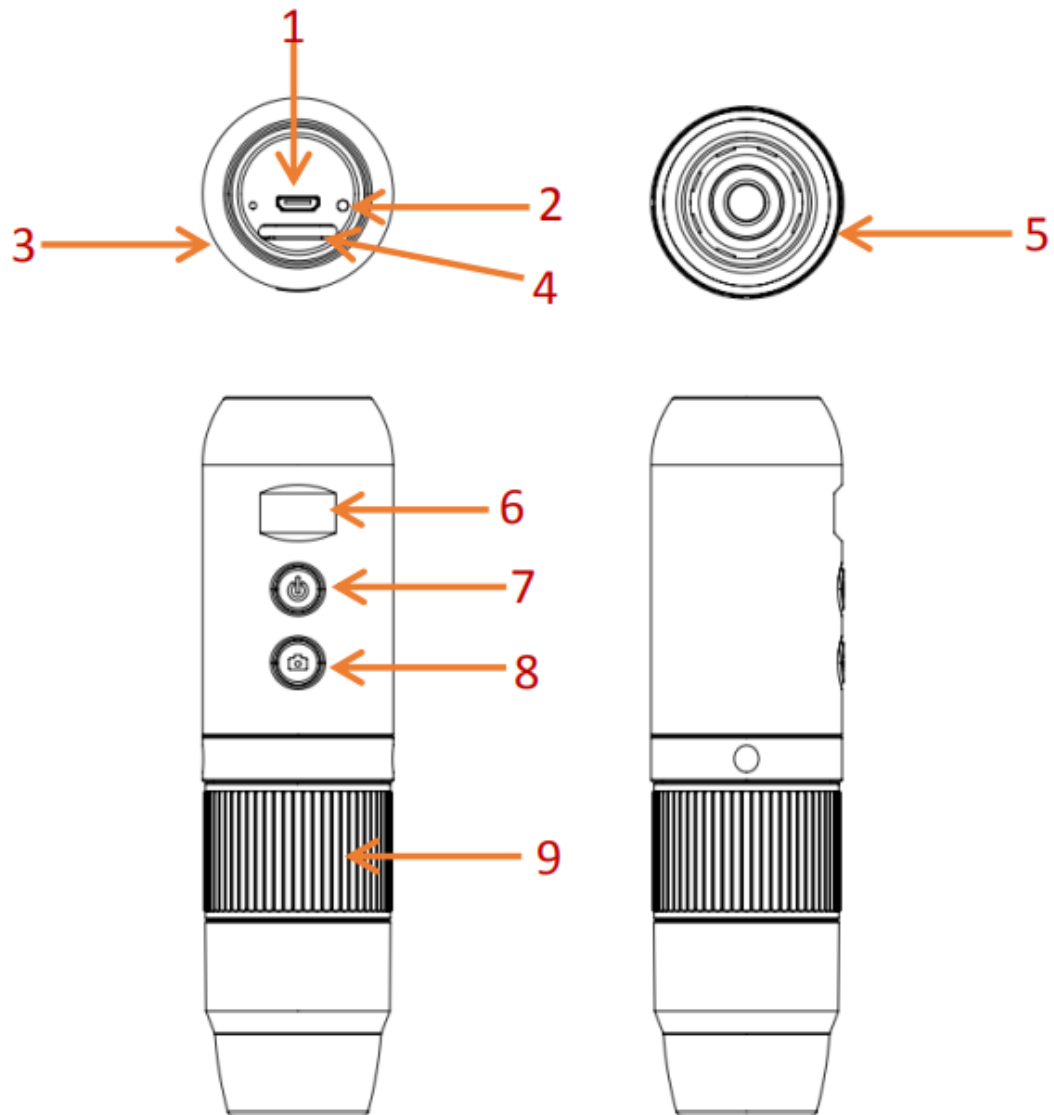
Version: 1.0



Product use: electronic circuit board testing, industrial testing, textile testing, clock and mobile phone maintenance, skin inspection, scalp inspection, printing inspection, teaching and research tools, precision object amplification measurement, reading help, hobby research, etc.

Product features: complete functions, clear imaging, exquisite workmanship, built-in battery, computer connection, small in size and portable, support for up to 12 languages, etc.

1. Parts and Functions



The pictures are for reference only, please refer to the real objects.

1. Parts and Functions

1.1 Instructions for Use

Part No.	Function
1	Micro USB interface
2	Reset
3	LED indicator
4	LED brightness adjustment
5	LED light source
6	Display screen
7	Power key
8	Photo/video keys
9	Focal length adjusting roller

Micro USB Interface:

You can connect USB to charge or connect to a computer. (It is not recommended to use the equipment during charging, which will reduce the service life of the battery of the equipment)

Reset key: Reset key. When the operation of the equipment is abnormal, use a fine needle to poke this key to force shutdown (Note: If you need to start up after shutdown, you need to press the on/off key again for a long time).

1. Parts and Functions

1.1 Instructions for Use

LED indicator: charging indicator. In the process of charging, the red light is on, and the light is off when it is full.

LED brightness adjusting: toggle the potentiometer to adjust the brightness of the LED supplementary light.

LED light source: camera supplementary light.

Display screen: display the battery power and WiFi/USB connection status.

Power key: press it for a long time to switch it on and off.

Photo/video key: when the equipment is working, click this button to take photos and save them automatically. Press this key for 2 seconds to enter the recording mode, release the key to maintain the recording state, press it for 2 seconds to release and exit the recording mode and save the video recorded during this period. It can be viewed later on your IOS/Android device.

Focal length adjusting roller: when the equipment is working, rotating this roller can adjust the focal length and focus the shooting object.

1. Parts and Functions

1.2 Product Specification Parameters

Item	Parameters
Product name	MS4 digital microscope
Optical dimension of lens	1/4"
Signal-to-noise ratio	37dB
Sensitivity	4300mV/lux-sec
Photographic resolution	640x480, 1280*720, 1920*1080
Video resolution	640x480, 1280*720, 1920*1080
Video format	Mp4
Picture format	JPG
Focus mode	Manual
Magnification factor	50X-1000X
Light source	8 LEDs (adjustable brightness)
Focusing range	10 ~ 40mm (long-range view)
White balance	Automatic
Exposure	Automatic
PC operating system	Windows xp, win7, win8, win10, Mac OS x 10.5 or higher
WiFi distance	Within 3 meters
Lens structure	2G + IR
Aperture	F4.5
Lens angle of view	16°
Interface and signal transmission mode	Micro/usb2.0
Storage temperature/humidity	-20°C - +60°C 10-80% RH
Operating temperature/humidity	0°C - +50°C 30% ~ 85% Rh
Operating current	~ 270 mA
Power consumption	1.35 W
APP working environment	Android 5.0 and above, ios 8.0 and above
WIFI implementation standard	2.4 Ghz (EEE 802.11 b/g/n)

2. Use WiFi Digital Microscope on IOS/Android Device

2.1 APP Download

IOS: Search iWeiCamera in App Store to download and install, or scan the following QR code to select IOS version to install.

Android: Scan the following QR code and select Android (Google Play) version (international users) or Android (China) version (Chinese users) to download and install, or enter the address from the browser to download and install.

IOS/Android download QR code:



Or enter the following address in the browser to download:

<https://active.clewm.net/DuKSYX?qrurl=http%3A%2F%2Fqr09.cn%2FDuKSYX>ype=1&key=bb57156739726d3828762d3954299ca7a957b6172>



(IOS APP icon)



(Android APP icon)

2. Use WiFi Digital Microscope on IOS/Android Device

2.2 Device On

Press the power key of the device for 3 seconds and the display screen will light up, and the device will be turned on.

2.3 Connecting a WiFi Digital Microscope to IOS/Android Device

Open WiFi settings of IOS/Android devices, open WiFi, find a WiFi hotspot with prefix "Cam-MS4" (without encryption), and click Connect. After successful connection, return to the main interface of IOS/Android devices.



2. Use WiFi Digital Microscope on IOS/Android Device

2.4 APP Interface Introduction and Use

Open the APP and enter the APP main interface:



2.4.1 APP Home Page

Help: click to view company information, APP version, FW version and product instructions.

Preview: click to watch the real-time picture of the equipment and operate the equipment.

File: click to view the photos and video files that have been taken.

2. Use WiFi Digital Microscope on IOS/Android Device

2.4 APP Interface Introduction and Use

2.4.1 Preview Interface

Zoom out: click to zoom out the screen (the default is minimum every time you open it).

Zoom in: click to zoom in the screen (used when the picture is too small).

Reference line: click to mark the center point of the picture with a cross.

Photo: click to take photos and save files automatically.

Video record: click to record video/end video recording and automatically save the file.



2.4.3 My Photo

Click on the My Photo, and you can view photos or videos after entering, or you can choose to delete photos or videos.



2. Use WiFi Digital Microscope on IOS/Android Device

2.5 PC Measurement Software Interface Introduction and Use

2.5.1 Software Download

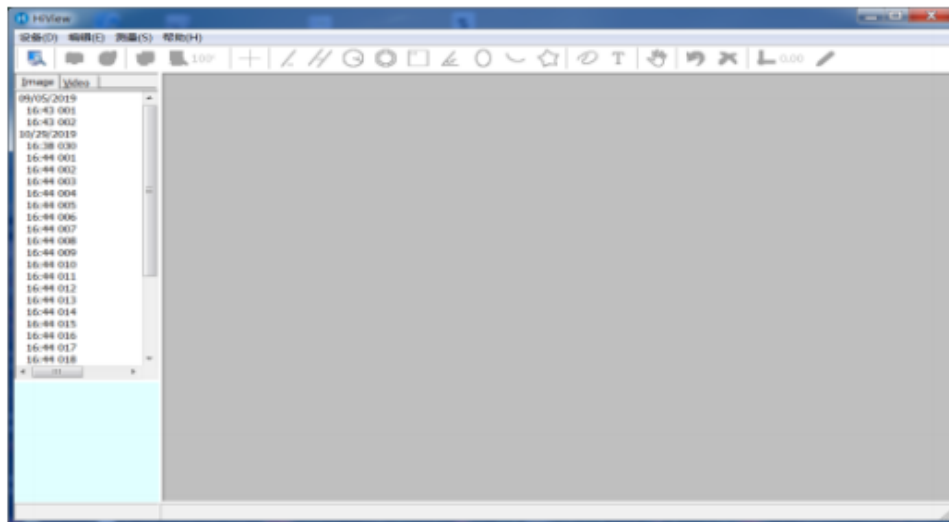
Log in to <http://soft.hvscam.com> with a browser, select the corresponding version according to your computer system, and select "HiViewSet 1.1" to download.



2. Use WiFi Digital Microscope on IOS/Android Device

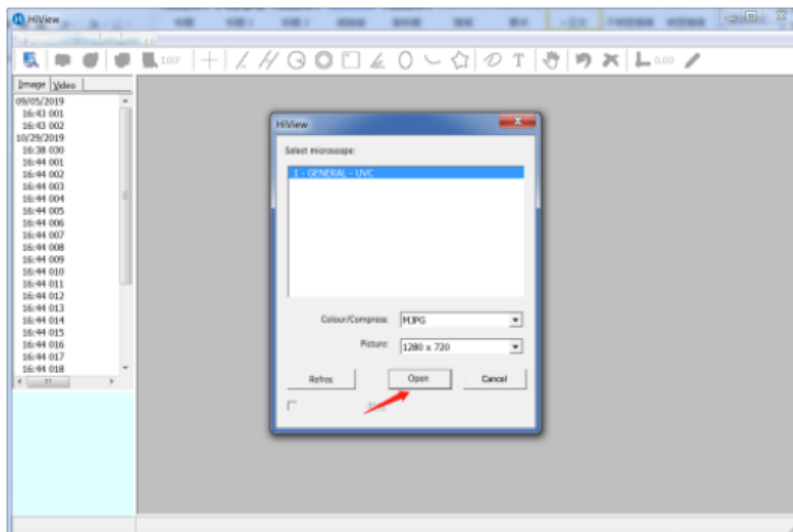
2.5 PC Measurement Software Interface Introduction and Use

2.5.1 Software Interface



2.5.3 Device Open

Click the "Device" option in the upper left corner, then click "Open", select the device you want to use in the pop-up window, and then click the "Open" option below to open the device.



If you have any questions, please contact our company.

The final interpretation right belongs to our company.

FCC Caution:

This device complies with part 15 of the FCC Rules. Operation is subject to the following two conditions: (1) This device may not cause harmful interference, and (2) this device must accept any interference received, including interference that may cause undesired operation.

Any Changes or modifications not expressly approved by the party responsible for compliance could void the user's authority to operate the equipment.

Note: This equipment has been tested and found to comply with the limits for a Class B digital device, pursuant to part 15 of the FCC Rules. These limits are designed to provide reasonable protection against harmful interference in a residential installation. This equipment generates uses and can radiate radio frequency energy and, if not installed and used in accordance with the instructions, may cause harmful interference to radio communications. However, there is no guarantee that interference will not occur in a particular installation. If this equipment does cause harmful interference to radio or television reception, which can be determined by turning the equipment off and on, the user is encouraged to try to correct the interference by one or more of the following measures:

- Reorient or relocate the receiving antenna.
- Increase the separation between the equipment and receiver.
- Connect the equipment into an outlet on a circuit different from that to which the receiver is connected.
- Consult the dealer or an experienced radio/TV technician for help.

The device has been evaluated to meet general RF exposure requirement. The device can be used in portable exposure condition without restriction.