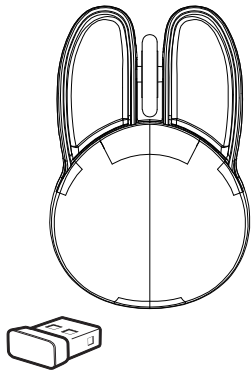


ANIMAL MOUSE  
Instruction Manual  
Item Number: MU21023

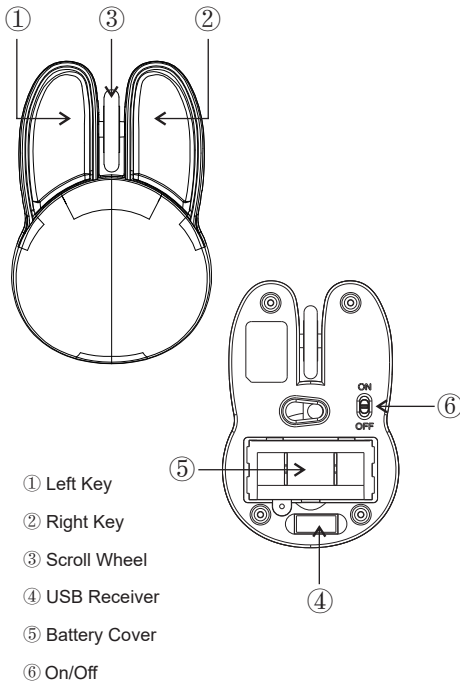


**Contents included:**  
1 (One) Wireless Mouse: 2.51in. x 3.81in. x 1.46in.  
(6.4 x 9.7 x 3.7cm)  
1 (One) USB Receiver (stored in the battery compartment)  
Requires 2 (Two) x 1.5V AAA Alkaline Batteries  
(Not Included)

FCC ID: 2AYB6-MU21023 (ANIMAL MOUSE)  
FCC ID:2AYB6-MU2 (USB Receiver)

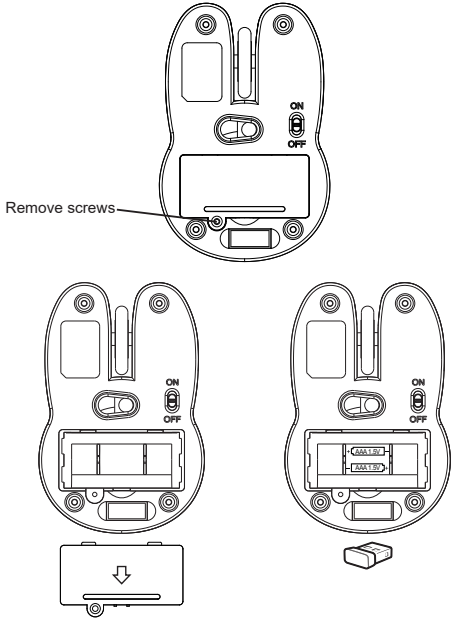
Distributed by 1616 Holdings, Inc.  
701 Market Street, Suite 200  
Philadelphia, PA 19106  
Made in China

Part Name



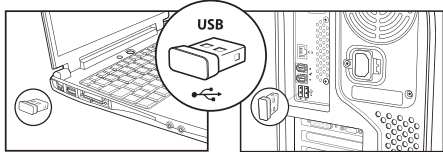
How To Operate

1. Open the battery cover ⑤ on the battery compartment, insert 2pcs "AAA" batteries (not included, need to purchase additionally), and remember to check for the correct polarity(+/-).
2. Take out the USB receiver and secure the battery cover ⑤ to the battery compartment.



Front

3. Turn on your computer and connect the USB receiver to the USB port of your computer, wait a minute until the device has been automatically detected and installed (Plug and Play). When installation is complete, you can use the device.



**NOTE:** To avoid losing this receiver during transport, we suggest to insert the receiver into the battery compartment on the bottom of this device when it isn't in use.

Product Specification

- Key number: 3
- Receiver: USB2.0
- DPI: 1000
- Operating temperature: -5°C ~ 40°C
- Relative humidity: 20% ~ 90%
- Maximum speed: 28in/sec
- response rate: 125Hz
- Requires: 2 (Two) x AAA 1.5V Alkaline Batteries (Not Included)
- Working current: <10mA
- Compatible system: Win7/Win8/Win10/Win11/Macos

Problem Reference

1. **Mouse does not respond**
  - Is the mouse SENSOR light on?  
(No light, check if the battery has electricity, and whether the positive and negative poles are reversed.)
  - Did the receiver recognize successfully?  
(Identification failed, change a USB interface, or reload the drive.)
2. **Overcoming**
  - Is the mouse and desktop smooth?  
(If not please put it on a smooth surface.)
  - Is the battery low?  
(If the battery is low, please replace the battery.)

This device complies with part 15 of the FCC Rules. Operation is subject to the following two conditions: (1) this device may not cause harmful interference, and (2) this device must accept any interference received, including interference that may cause undesired operation.

- **"WARNING:** Changes or modifications to this unit not expressly approved by the party responsible for compliance could void the user's authority to operate the equipment."

However, there is no guarantee that interference will not occur in a particular installation. If this equipment does cause harmful interference to radio or television reception, which can be determined by turning the equipment off and on, the user is encouraged to try to correct the interference by one or more of the following measures:

- Reorient or relocate the receiving antenna.
- Increase the separation between the equipment and receiver.
- Connect the equipment into an outlet on a circuit different from that to which the receiver is connected. Consult the dealer or an experienced radio/TV technician for help."

- **"NOTE:** This equipment has been tested and found to comply with the limits for a Class B digital device, pursuant to Part 15 of the FCC Rules. These limits are designed to provide reasonable protection against harmful interference in a residential installation. This equipment gener ates, uses and can radiate radio frequency energy and, if not installed and used in accordance with the instructions, may cause harmful inter ference to radio communications.

Back