

KC.DA.00223

Antenna Specification

1. Application:

This application shall apply for antenna unit which shall be used such as automotive, conventional communications, smart home, etc..

2.Electrical Specification:

Those specifications were specially defined for customer's model, and all characteristics were measured under the model's handset testing jig .

2-1. Frequency Band:

Frequency Band	MHz
WiFi	2400-2500MHz


2-2. Impedance

50 ohm nominal

2-3. VSWR

2-3-1.Measurement frequency points and VSWR value

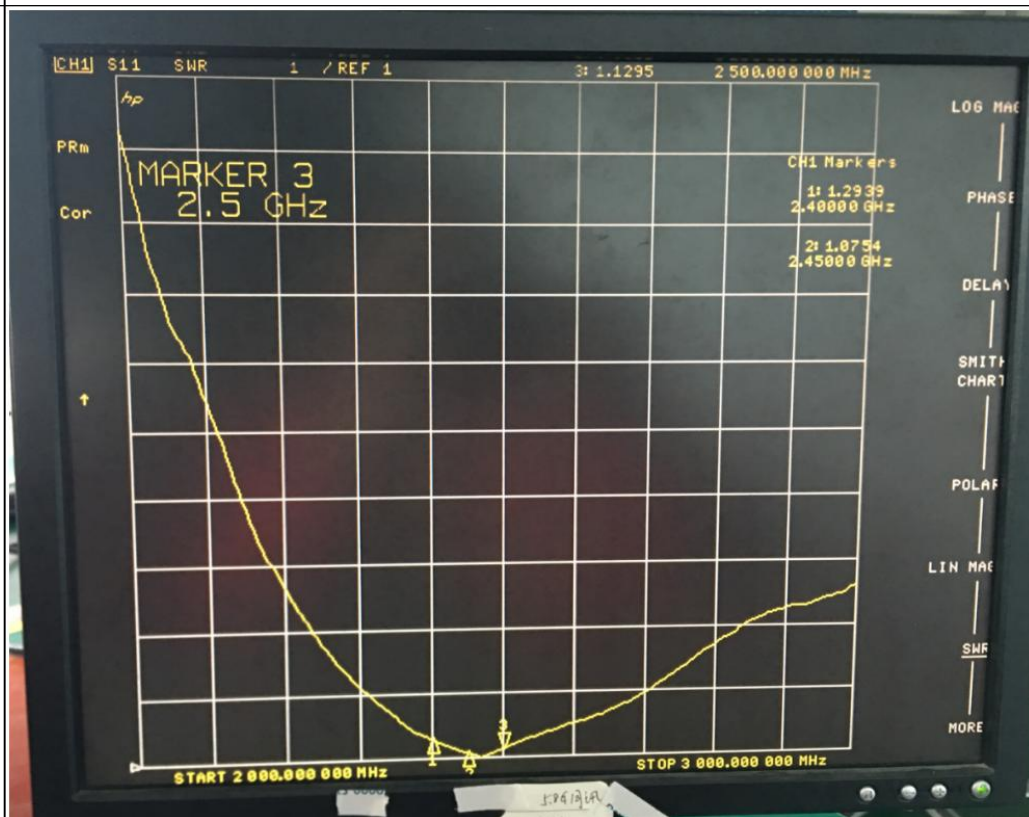
Frequency Band(MHz)	2400	2500
Typical Value: (VSWR)	1.29	1.12

UNLESS OTHER SPECIFIED TOLERANCES ON : X=± X.X=± X.XX=± ANGLES=± HOLEDIA=±			TOXU TECHNOLOGY CO., LTD. Building 501, No. 52 Qiankeng Road, Xinhe Community, Fucheng Street, Longhua District, Shenzhen, China	
SCALE :	UNIT : mm		THIS DRAWINGS AND SPECIFICATIONS ARE THE PROPERTY OF TOXU TECHNOLOGY CO.,LTD.AND SHALL NOT BE REPRODUCED OR USED AS THE BASIS FOR THE MANUFACTURE OR SALE OF APPARATUS OR DEVICES WITHOUT PERMISSION	
DRAWN BY: LI	CHECKED BY: YS			
DESIGNED BY: De wen	APPROVED BY: YS			
TITLE : KC.DA.00223 Antenna Specification			SPEC REV.	
			P0	

2-3-4 Measuring Method

1. A 50 Ω coaxial cable is connected to the antenna. Then this cable is connected to a network analyzer to measure the VSWR.
2. Keeping this jig away from metal at least 20 cm

2-3-5 Picture



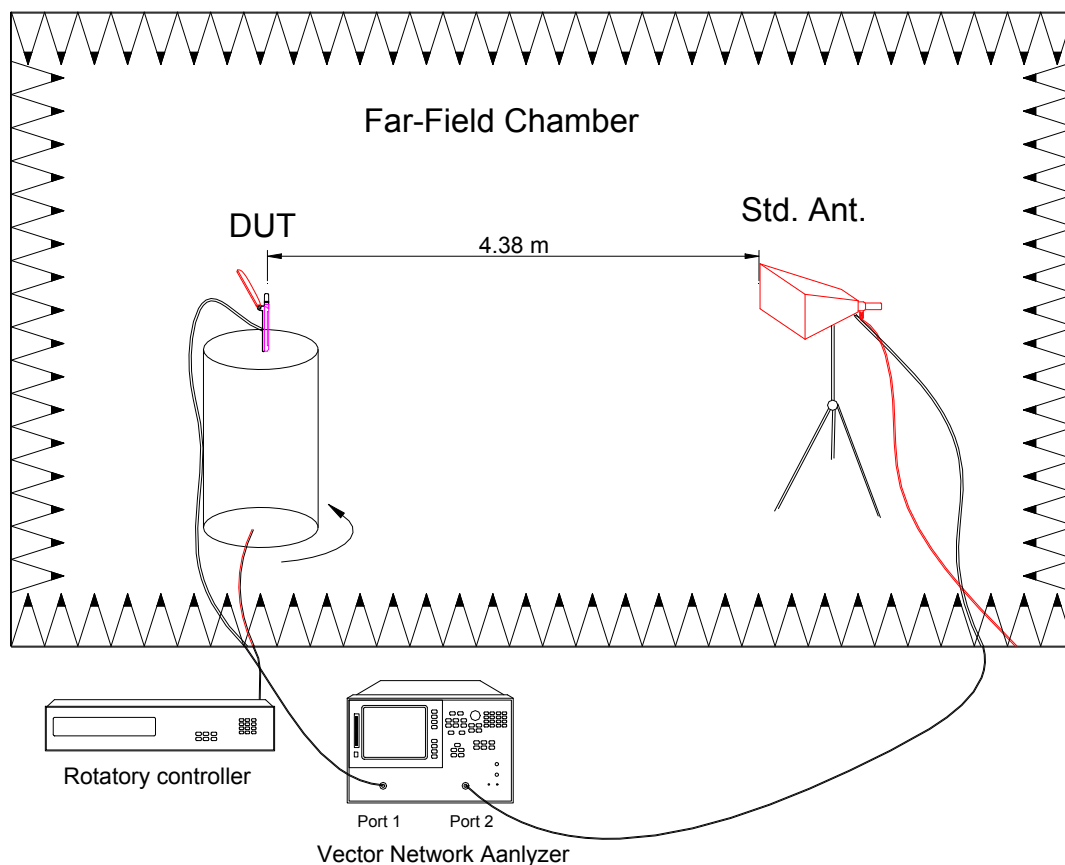
UNLESS OTHER SPECIFIED TOLERANCES ON :		<div>TOXU 同讯技术</div>	<div>TOXU TECHNOLOGY CO., LTD. Building 501, No. 52 Qiankeng Road, Xinhe Community Fucheng Street, Longhua District, Shenzhen, China</div>
X=±	X.X=±		
ANGLES=±		HOLEDIA=±	
SCALE :	UNIT : mm	THIS DRAWINGS AND SPECIFICATIONS ARE THE PROPERTY OF TOXU TECHNOLOGY CO.,LTD.AND SHALL NOT BE REPRODUCED OR USED AS THE BASIS FOR THE MANUFACTURE OR SALE OF APPARATUS OR DEVICES WITHOUT PERMISSION	
DRAWN BY: LI	CHECKED BY: YS		
DESIGNED BY: De wen	APPROVED BY: YS		
TITLE : KC.DA.00223 Antenna Specification			SPEC REV.
			P0

2-4. Efficiency and Gain

4-5.1 Measure method

1. Using a low loss coaxial cable to link a standard handset jig
2. Fixed this handset jig on chamber's rotator plane
3. Linking jig into network analyzer port and using a probing horn antenna to collect data.
4. Using another standard gain horn antenna to calibrated those data

4-5.2 Chamber definition



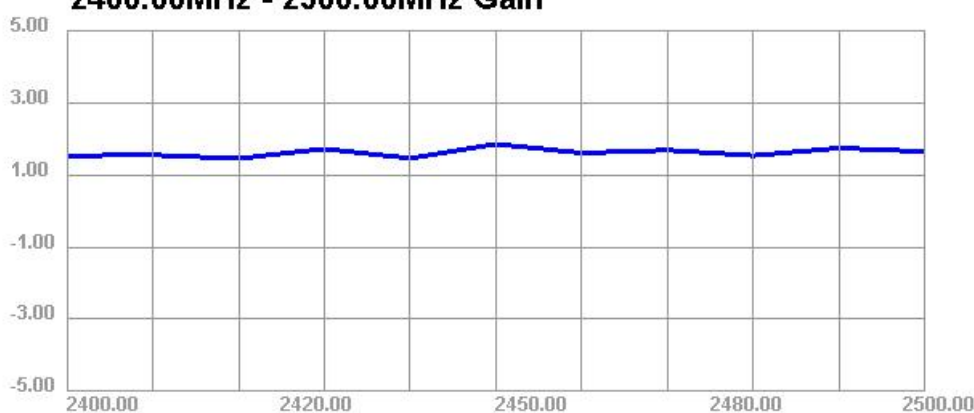
1. An anechoic chamber (7mx4mx3m) which satisfied far-field condition was applied to avoid multi-path effect
2. The quite room region is 40cmx40cmx40cm at the center of rotator
3. The distance between DUT and standard antenna is 4.38 m
4. Probing antenna (9120D horn antenna) and standard gain horn antenna (BBHA9120 LPF 700MHz ~6GHz)

UNLESS OTHER SPECIFIED TOLERANCES ON : X=± X.X=± X.XX=± ANGLES=± HOLEDIA=±		TOXU 同讯技术 TOXU TECHNOLOGY CO., LTD. Building 501, No. 52 Qiankeng Road, Xinhe Community, Fucheng Street, Longhua District, Shenzhen, China
SCALE :	UNIT : mm	
DRAWN BY: LI	CHECKED BY: YS	THIS DRAWINGS AND SPECIFICATIONS ARE THE PROPERTY OF TOXU TECHNOLOGY CO.,LTD.AND SHALL NOT BE REPRODUCED OR USED AS THE BASIS FOR THE MANUFACTURE OR SALE OF APPARATUS OR DEVICES WITHOUT PERMISSION
DESIGNED BY: De wen	APPROVED BY: YS	
TITLE : KC.DA.00223 Antenna Specification		SPEC REV. P0

2-5-1 Efficiency and Gain and 3D Date

Passive Test For WIFI2										
Freq (MHz)	Effi (%)	Effi (dB)	Gain (dBi)	Gain (dBd)	UHS (%)	DHIS (%)	Max (dB)	Min (dB)	Attenu t Hor	Attenu t Ver
2400	73.3	-1.35	1.53	-0.62	39.113	34.188	1.53	-19.75	53.58	53.59
2420	71.02	-1.49	1.45	-0.7	37.158	33.864	1.45	-18.86	53.83	53.76
2450	75.35	-1.23	1.85	-0.3	37.977	37.368	1.85	-17.95	54.17	54.08
2480	66.98	-1.74	1.54	-0.61	32.936	34.048	1.54	-20.36	54.08	53.86
2500	67	-1.74	1.65	-0.5	32.476	34.521	1.65	-22.18	54.04	53.84

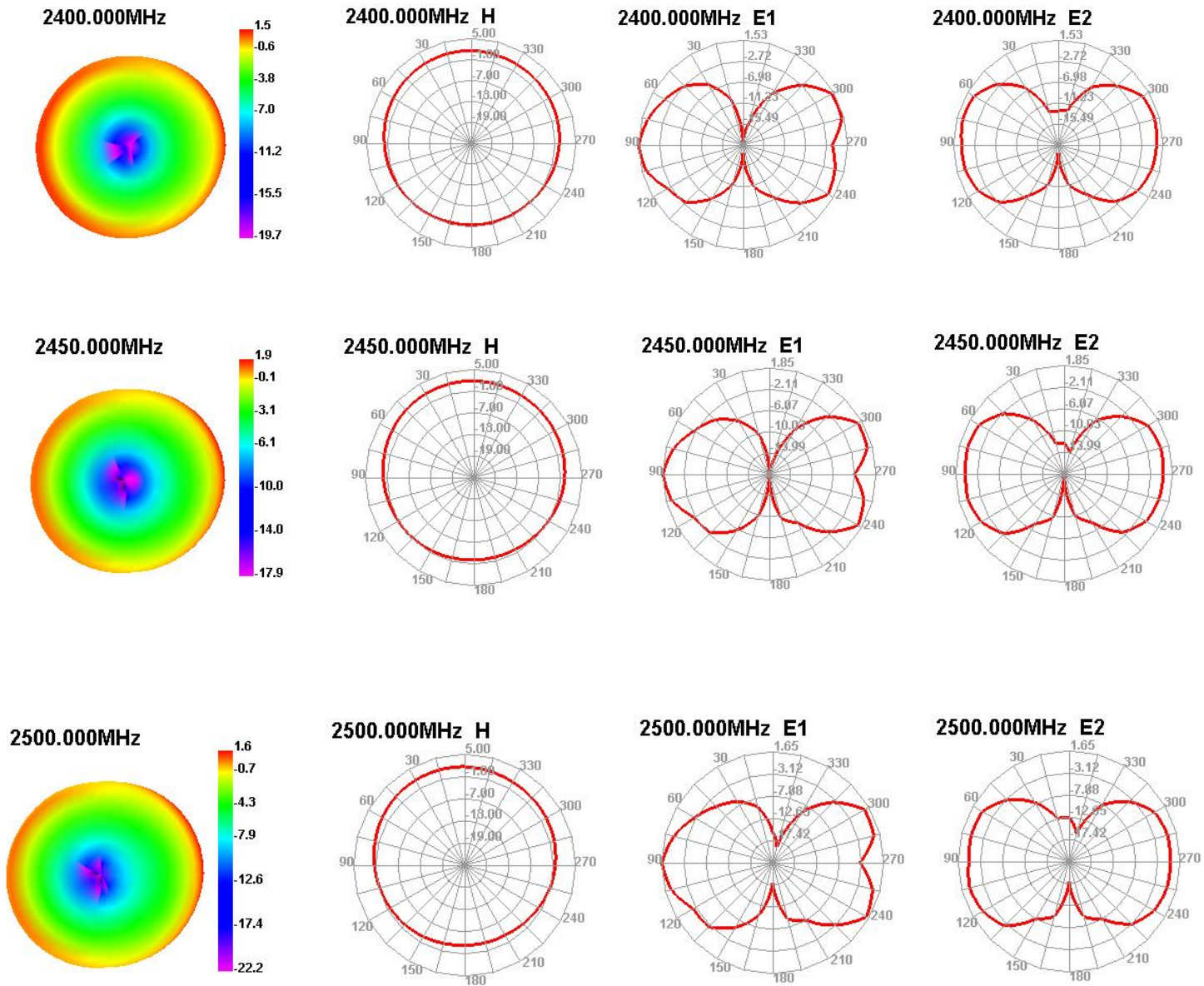
2400.00MHz - 2500.00MHz Gain




2400.00MHz - 2500.00MHz Efficiency



UNLESS OTHER SPECIFIED TOLERANCES ON : X=± X.X=± X.XX=± ANGLES=± HOLEDIA=±		TOXU 同讯技术 TOXU TECHNOLOGY CO., LTD. Building 501, No. 52 Qiankeng Road, Xinhe Community, Fucheng Street, Longhua District, Shenzhen, China
SCALE :	UNIT : mm	
DRAWN BY: LI	CHECKED BY: YS	THIS DRAWINGS AND SPECIFICATIONS ARE THE PROPERTY OF TOXU TECHNOLOGY CO.,LTD.AND SHALL NOT BE REPRODUCED OR USED AS THE BASIS FOR THE MANUFACTURE OR SALE OF APPARATUS OR DEVICES WITHOUT PERMISSION
DESIGNED BY: De wen	APPROVED BY: YS	
TITLE : KC.DA.00223 Antenna Specification		SPEC REV.
		P0

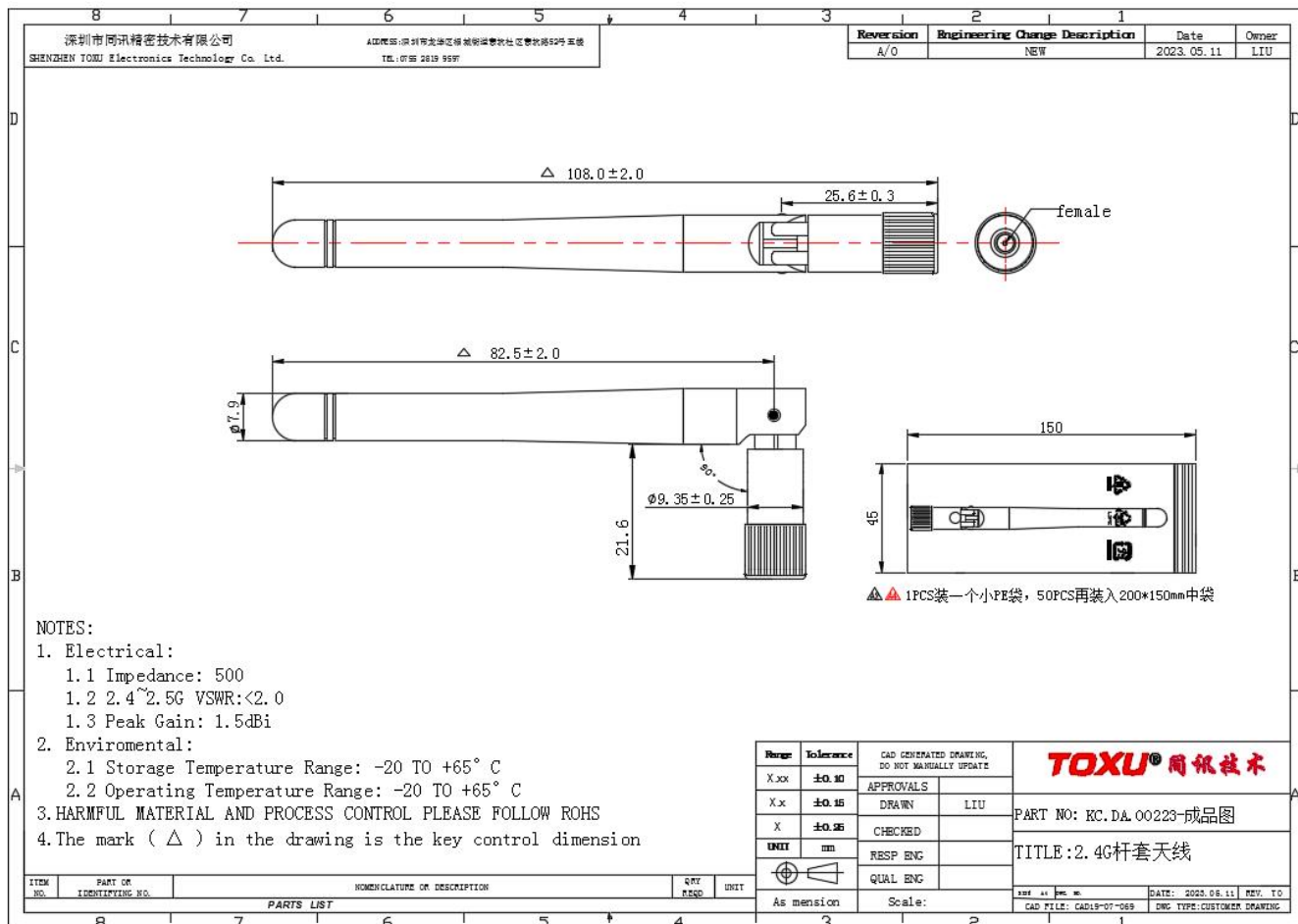


UNLESS OTHER SPECIFIED TOLERANCES ON :			TOXU TECHNOLOGY CO., LTD. Building 501, No. 52 Qiankeng Road, Xinhe Community, Fucheng Street, Longhua District, Shenzhen, China
X=± X.X=± X.XX=± ANGLES=± HOLEDIA=±			
SCALE :	UNIT : mm	THIS DRAWINGS AND SPECIFICATIONS ARE THE PROPERTY OF TOXU TECHNOLOGY CO.,LTD.AND SHALL NOT BE REPRODUCED OR USED AS THE BASIS FOR THE MANUFACTURE OR SALE OF APPARATUS OR DEVICES WITHOUT PERMISSION	
DRAWN BY: LI	CHECKED BY: YS		
DESIGNED BY: De wen	APPROVED BY: YS		
TITLE : KC.DA.00223 Antenna Specification			SPEC REV. P0

3. Mechanical Specification:

3-1. Mechanical Configuration (Unit: mm)

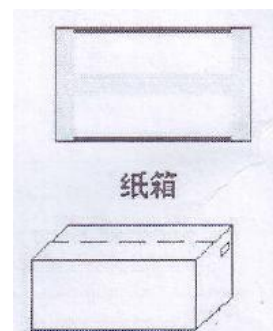
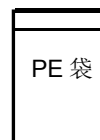
The appearance of the antenna is according to drawing



UNLESS OTHER SPECIFIED TOLERANCES ON :		<div>TOXU 同讯技术</div>	TOXU TECHNOLOGY CO., LTD. Building 501, No. 52 Qiankeng Road, Xinhe Community, Fucheng Street, Longhua District, Shenzhen, China	
X=±	X.X=±		X.XX=±	
ANGLES=±		HOLEDIA=±		
SCALE :		UNIT : mm		
DRAWN BY: LI		CHECKED BY: YS		
DESIGNED BY: De wen		APPROVED BY: YS		
THIS DRAWINGS AND SPECIFICATIONS ARE THE PROPERTY OF TOXU TECHNOLOGY CO.,LTD.AND SHALL NOT BE REPRODUCED OR USED AS THE BASIS FOR THE MANUFACTURE OR SALE OF APPARATUS OR DEVICES WITHOUT PERMISSION				
TITLE : KC.DA.00223 Antenna Specification				SPEC REV.
				P0

4 .Packaging specification:

Product number: xxxxx			
Product model: xxxxx			
一、 Label requirements:			
Customer	xxx		
supplier	xxxxxx		
Material coding	xx		
Product model	xx		
Number	XXX PCS	Factory date	X X X
Remarks			
二、 Boxing:			
Job description:			
1. Inner packaging:			
XXpcs A bag			
2. External packaging:			
Xx PCS ;			
3. Matters needing attention:			
a. Whether to add partition and pearl cotton;			
b. Label attachments, such as ROHS, etc.;			



UNLESS OTHER SPECIFIED TOLERANCES ON :		<div>TOXU 同讯技术</div>	TOXU TECHNOLOGY CO., LTD. Building 501, No. 52 Qiankeng Road, Xinhe Community Fucheng Street, Longhua District, Shenzhen, China
X=± X.X=± X.XX=± ANGLES=± HOLEDIA=±			
SCALE :	UNIT : mm	THIS DRAWINGS AND SPECIFICATIONS ARE THE PROPERTY OF TOXU TECHNOLOGY CO.,LTD.AND SHALL NOT BE REPRODUCED OR USED AS THE BASIS FOR THE MANUFACTURE OR SALE OF APPARATUS OR DEVICES WITHOUT PERMISSION	
DRAWN BY: LI	CHECKED BY: YS		
DESIGNED BY: De wen	APPROVED BY: YS		
TITLE : KC.DA.00223 Antenna Specification			SPEC REV.
			P0