

VII. Fitting the Receiver

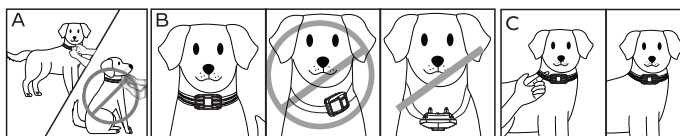
IMPORTANT:

The proper fit and placement of your Receiver are important for effective training. The Metal Prongs with Conductive Silicone Caps must have direct contact with your dog's skin on the underside of his neck. To ensure a proper fit, please follow these steps:

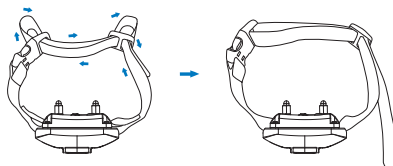
1. Make sure that the Receiver is turned off.
2. Let your dog stand on four feet or lay down fully (A).
3. Place the Receiver on your dog's neck close to the ears. Center the Metal Prongs underneath your dog's neck, touching the skin (B).

Note: It is sometimes necessary to trim the hair around the Metal Prongs to make sure that contact is consistent.

4. The Receiver should fit snugly, yet loose enough to allow one finger to fit between the strap and your dog's neck (C).
5. Allow your dog to wear the Receiver for several minutes then recheck the fit. Check the fit again as your dog becomes more comfortable with the Receiver.



6. To attach the collar to the Receiver, please follow the following steps as instructed to thread the strap.



CAUTION:

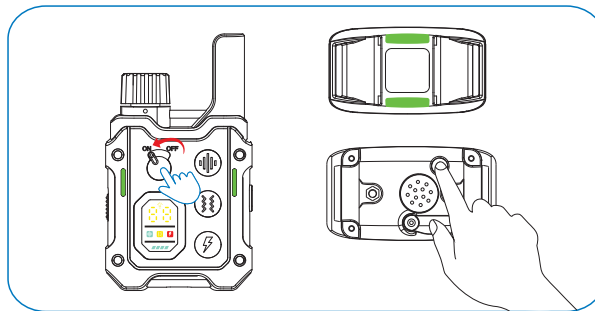
- **DO NOT** leave the Receiver on your dog's neck for continuous 12 hours.
- **Never** attach a leash to the collar.

- **Never** fit the Receiver too tight to your dog's neck.
- **DO NOT** shave the dog's neck as this may increase the risk of skin irritation.
- **Check the fit regularly** to make your dog more comfortable with the Receiver.

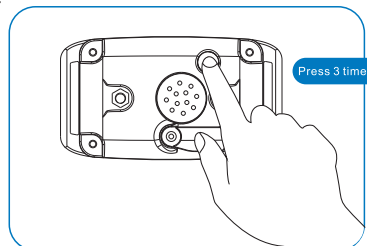
VIII. Pairing Up

In case the Receiver is not responding to the Remote Transmitter, follow these steps to pair them up:

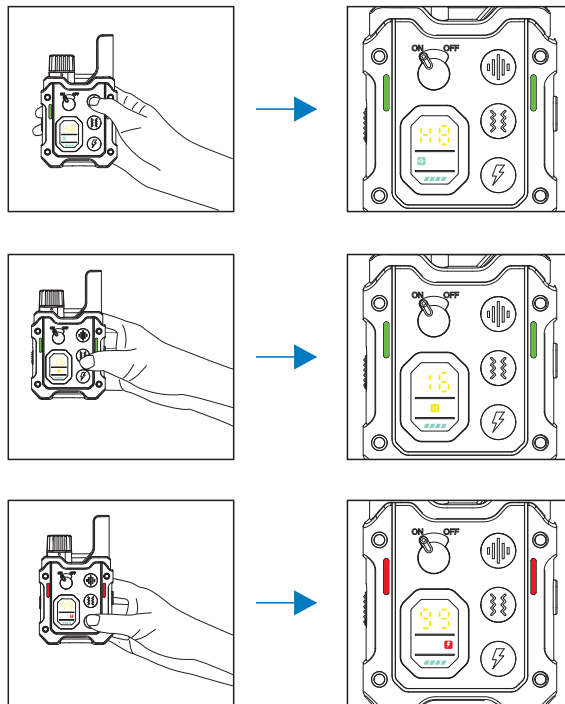
1. Press and hold the Power Button on the Receiver for 3 seconds to turn it on. Turn on the Remote Transmitter by sliding the Switch to 'ON', and the Color Display will light up.



2. Press the Power Button on the Receiver 3 times to enter the Pairing Mode. You will hear a Beeping tone and the LED Indicator light becomes solid green. You will now have 10 seconds to finish the pairing.



3. Press the Warning Tone Button, Vibration Button, or Shock Button on the Remote Transmitter, and the Receiver will beep 3 times and respond respectively after you press any of the above buttons indicating that the pairing process is completed.









Tips:





The Receiver is paired up to the Remote Transmitter in Channel 1 by factory default setting. If you buy a new Receiver, you can follow the above instructions to pair it up to Channel 2. The system can pair up to 2 Receivers in 2 different channels. If you can not pair your device successfully, it may be due to signal interference. Please try pairing again in a different location or contact our service center.

IX. LCD Display & Indicator Definitions


Remote Transmitter:

	Warning Tone Mode
	Vibration Mode
	Shock Mode
	Positioning Light Mode
	Level for Warning Tone/Vibration/Shock
	Remote Transmitter Battery

Remote Transmitter Indicator Light:

Charging	The Green Indicator light blinks regularly
Fully Charged	Green Indicator light becomes solid
Press 	The Green Indicator light comes up
Press 	The Green Indicator light comes up
Press 	The Green Indicator light comes up
Press 	The Red Indicator light comes up

Receiver Indicator Light :

	Slowly blinking indicates the Receiver is on
	Fast blinking indicates the Receiver is on charge
	Faster blinking indicates the Receiver battery is low

X. Training Tip

HOW to find the best stimulation for your dog?

Important: Always start at the lowest level and work your way up. The Remote Training Collar has 8 types of Warning Tones, 16 levels of Vibration, and 99 levels of Shock. For Warning Tones, there are 8 types of Tones, with only frequency differences between the different types. For Vibration and Shock, level 1 is the lowest; the highest level for Vibration is level 16, and level 99 for Shock.

This allows you to choose the Stimulation Level that is best for your dog. Once you have placed the Receiver on your dog, it is time to find the Stimulation Level that is best for him. This is called the Recognition Level.

A slight change in your dog's behavior, such as looking around in curiosity, scratching at his collar, or flicking his ears, indicates the Recognition Level that is best for your dog.

Follow the steps below to find your dog's Recognition Level:

1. Starting at Level 1, press the Warning Tone/Vibration/Shock Button continuously for 1 to 2 seconds.

Note: When the Warning Tone/Vibration/Shock Button is held down for 10 consecutive seconds, the Remote Transmitter will "time out", and you must release and press the button again before additional stimulation can be delivered.

2. If your dog shows no reaction, repeat the Stimulation Level several times before moving up to the next level.

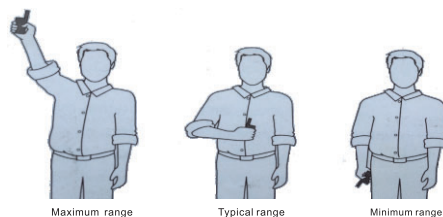
3. YOUR DOG SHOULD NOT WHINE OR PANIC WHEN RECEIVING STIMULATION. IF THIS HAPPENS, THE STIMULATION LEVEL IS TOO HIGH AND YOU NEED TO GO BACK TO THE PREVIOUS LEVEL AND REPEAT THE PROCESS.

4. Move up through the Stimulation Levels until your dog reliably responds to the stimulation.
 5. If your dog continues to show no response at the highest level of Vibration or Static Shock, check the fit of the Receiver. If your dog has long or thick hair, contact our Customer Care Center to obtain a longer set of Contact Points. Then go back to #1 and repeat the process. If this still does not yield any results, your dog's hair will need to be trimmed around the Contact Points.
- If after completing all of these steps, your dog still does not indicate he is feeling the stimulation, please contact our customer service.

How to Maximize the distance?

Terrain, weather, vegetation, transmission from other radio devices, and other factors will affect the maximum range.

Hold the Remote Transmitter in a horizontal position away from your body to achieve optimum range. For maximum signal strength, keep the device properly charged.



*Avoid touching the antenna or the range may decrease substantially.

XI. Frequently Asked Questions

Q: Is the Stimulation safe for my dog?

A: While the Stimulation is unpleasant, it is harmless to your dog. Electronic training devices require interaction and training from the owner to achieve desired results.

Q: How old does my dog have to be before using the Dog Training Collar Mode?

A: Your dog should be able to recognize basic obedience commands such as "Sit" or "Stay". Dogs should be at least 6 months old before using the Trainer.

Q: Once my dog is trained and has been obeying my commands, will he have to continue to wear the Receiver?

A: Probably not. You may need to reinforce training with the Receiver from time to time.

Q: Is the Receiver waterproof?

A: Yes. The Receiver meets the IP67 waterproof rating, but make sure to keep the area dry when charging.

Note: The Remote Transmitter is not waterproof.

Q: Will I get a maximum range with the Remote Training Collar?

A: The range of the Dog Training Collar Mode will vary according to terrain, weather, vegetation, as well as transmission from other radio devices. See "How to Maximize the Distance" on page 19 for tips on maximizing your range.

Q: How long can I continuously deliver stimulation to my dog?

A: The maximum amount of time you can press the Warning Tone/Vibration/Shock button and deliver stimulation to your dog continuously is 10 seconds. After this, the Remote Transmitter will time out, and these stimulation buttons must be released and pressed again.

Q: How do I know if I can use this product for my dog?

A: The product is designed for healthy dogs over 6 months old. Most importantly, this product cannot be used on unhealthy or aggressive dogs, and if you are unsure whether this product is appropriate for your pet, please consult your veterinarian or a certified trainer.

Q: Can I charge this product with any type of charger?

A: No, you are suggested to charge this product with a charger of 5V output voltage, because a charger with an output voltage over 5V may cause damage to the product. The product will stop charging automatically if the input voltage becomes too high and delivers a warning tone.

XII. Trouble Shooting

1. My dog does not respond when I press a button.

- Make sure the Receiver has been turned on.
- If your range has reduced from the first time you used the Remote Training Collar, the battery(-ies) may be low in either the Remote Transmitter or Receiver.
- Many factors can impact the amount of range. For a list of these factors, see "How to Maximize the Distance" on page 19.
- Test the Receiver with the Test Bulb.

NOTE: If the Test Bulb does not flash, recharge the Receiver and re-test. If the Test Bulb Tool still does not flash, please contact our customer service.

- Increase the Stimulation Level. Refer to "HOW to find the best stimulation for your dog" on page 18 for more information.
- Make sure the Receiver's Metal Prongs are placed snugly against your dog's skin. Refer to "Fitting the Receiver" on page 14 for more information.

2. The Receiver will not turn on.

- Make sure the Receiver has been charged. For the initial charge, be sure to charge it for 4 hours. Subsequent charges only take 2-3 hours.

3. The Receiver is not responding to the Remote Transmitter.

- Verify the Receiver is on.
- If the indicator is blinking rapidly, fully charge the Receiver.
- If the first two solutions did not resolve your problems, please check the "Pairing Up" on page 15 to re-pair the Receiver to the Remote Transmitter.

XIII. FCC Statement

USA

This device complies with part 15 of the FCC Rules. Operation is subject to the following two conditions: (1) This device may not cause harmful interference, and (2) this device must accept any interference received, including interference that may cause undesired operation.

NOTE:

This device complies with part 15 of the FCC Rules. Operation is subject to the following two conditions: (1) This device may not cause harmful interference, and (2) this device must accept any interference received, including interference that may cause undesired operation.

Any Changes or modifications not expressly approved by the party responsible for compliance could void the user's authority to operate the equipment.

Note: This equipment has been tested and found to comply with the limits for a Class B digital device, pursuant to part 15 of the FCC Rules. These limits are designed to provide reasonable protection against harmful interference in a residential installation. This equipment generates uses and can radiate radio frequency energy and, if not installed and used in accordance with the instructions, may cause harmful interference to radio communications. However, there is no guarantee that interference will not occur in a particular installation. If this equipment does cause harmful interference to radio or television reception, which can be determined by turning the equipment off and on, the user is encouraged to try to correct the interference by one or more of the following measures:

- Reorient or relocate the receiving antenna.
- Increase the separation between the equipment and the receiver.
- Connect the equipment to an outlet on a circuit different from that to which the receiver is connected.
- Consult customer care, the dealer, or an experienced radio/TV technician for help.
- The device has been evaluated to meet general RF exposure requirement. The device can be used in portable exposure condition without restriction.

Model: RS20
Made in China
Version: V1.0