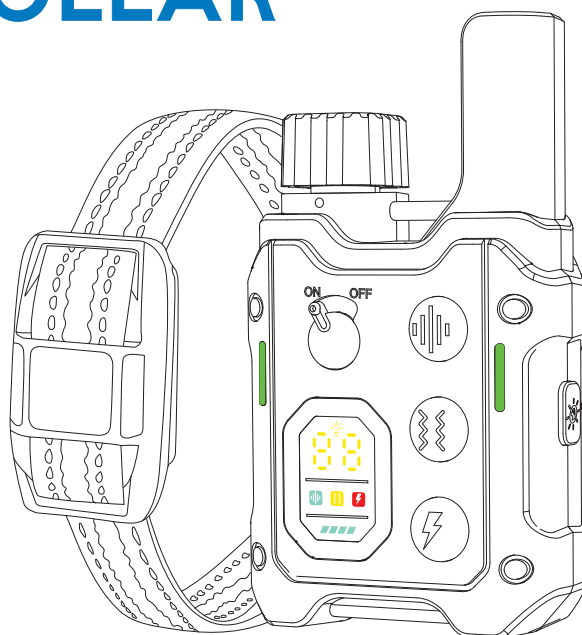


DOG TRAINING COLLAR



MODEL: RS20

I. Important Safety Information:

WARNING

Not for use with aggressive dogs. Do not use this product if your dog is aggressive or prone to aggressive behavior. Aggressive dogs can cause severe injury and even death to their owner and others. If you are unsure whether this product is appropriate for your dog, please consult your veterinarian or a certified trainer.

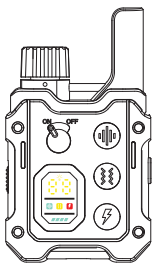
- ◆ For use with dogs over 6 months of age and over 8 lbs.
- ◆ **DO NOT** use when the dog or the collar is wet.
- ◆ **DO NOT** press and hold shock or vibrate for more than 10 seconds to avoid physical or psychological damage to your dog.
- ◆ Your dog **SHOULD NOT WHINE OR PANIC** when receiving stimulation. If this happens, the stimulation level is too high and you need to go back to the previous level and repeat the process.
- ◆ **DO NOT** charge the device near any flammable substances.
- ◆ For dog use **ONLY**. Not for use on children.
- ◆ This is not a toy, and should only be operated by a responsible adult.

CAUTION

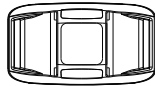
Before your first training, please carefully read and follow the instructions in this manual. The cautions below will help keep your dog safe and comfortable. Millions of dogs are comfortable wearing collars, while some are sensitive to the pressure from the contacts.

- ◆ It is vitally important that you and your dog remain safe while learning during on-leash training. Your dog should be on a strong leash (do not attach the leash to the receiver). The leash should be long enough for your dog to attempt to chase an object but short enough to prevent reaching roads or other hazards. You must also be physically strong enough to restrain your dog when he tries to chase.
- ◆ Risk of skin damage. Proper Receiver fitment is important. A Receiver worn for too long or made too tight on the dog's neck may cause skin damage. Ranging from redness to pressure ulcers; this condition is commonly known as bed sores.
- ◆ DO NOT leave the Receiver on the dog for more than 12 hours per day.
- ◆ When possible re-position the Receiver on the dog's neck every 1 to 2 hours.
- ◆ Check the fit to prevent excessive pressure; follow the instructions in this manual.
- ◆ Never connect an extra leash to the Receiver; it will cause excessive pressure on the contacts.
- ◆ Clean the dog's neck area and the Metal Prongs of the Receiver weekly with a damp cloth.
- ◆ Examine the contact area daily for signs of a rash or a sore.
- ◆ If a rash or sore is found, discontinue the use of the Receiver until the skin has healed. If the condition persists beyond 48 hours, see your veterinarian.
- ◆ Receiver Collar meets IP67 waterproof rating, it can be submerged in water up to 1 meter for up to 30 minutes. If submerged and wet, please do not use it.

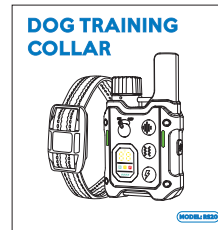
II. Package Content



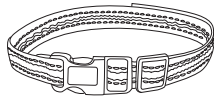
Remote Transmitter



Receiver



User Manual



Collar Strap



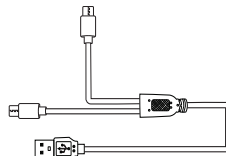
Metal Prongs



Conductive Silicone Caps



Test Bulb



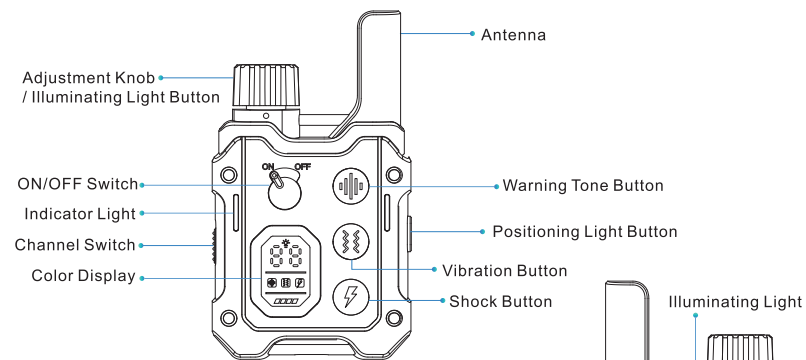
USB Type-C Cable



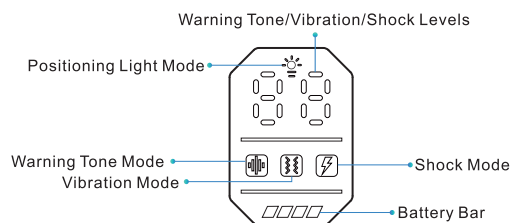
Wrist Strap

III. Product Overview

Remote Transmitter

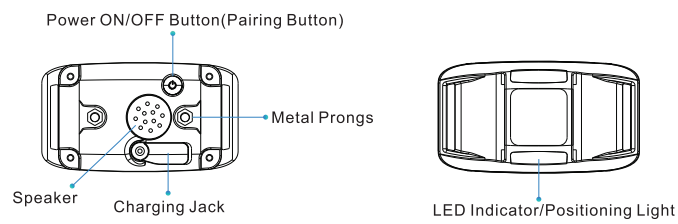


Display Screen

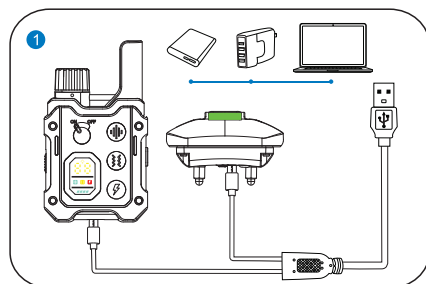


Note: The Remote Transmitter will go into sleep mode if no operation in one minute.

Receiver

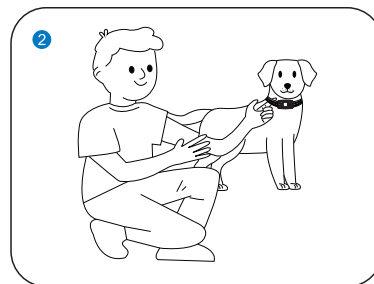


IV. Quick Start Guide

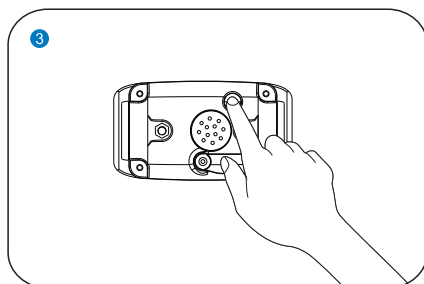


Charge the Receiver and the Remote Transmitter for 2-3 hours with the double-headed Type-C Cable from the package box.

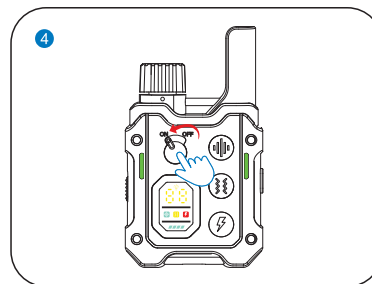
Note: The charger, power bank and other charging devices shown in the above picture are not included in the box.



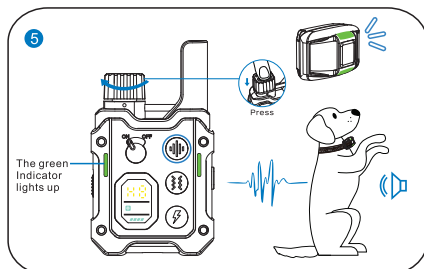
Make your dog sit down and fit the Receiver to your dog by leaving one finger space between the collar and your dog's neck. Center the contact points underneath your dog's neck, touching the skin.



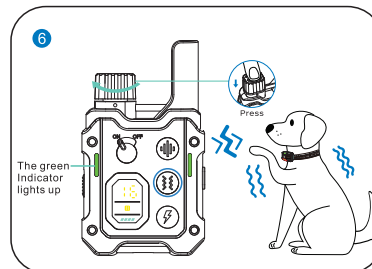
Turn on the Receiver by pressing and holding the Power Button for 2 seconds with a beeping tone and vibration to indicate that the Receiver is turned on. The green LED Indicator light now continues to blink regularly.



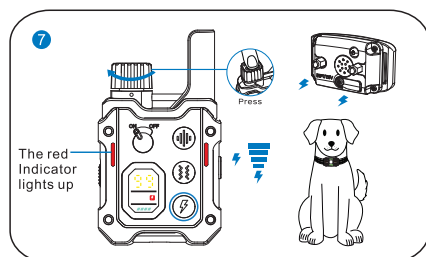
To turn on the Remote Transmitter, slide the Switch to 'ON', and the Color Display will light up.



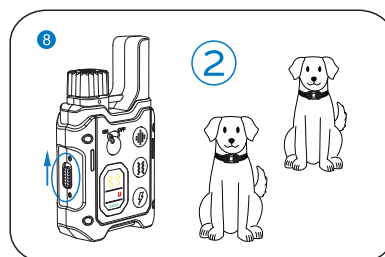
Warning Tone Command: Press the Warning Tone Button, and the green Indicator Light on the Remote Transmitter rapidly lights up. The Receiver will deliver a warning tone, and the green LED Indicator light on the Receiver comes up simultaneously. To adjust the Warning Tone level, press the Adjustment Knob to select the Warning Tone Mode first, then turn the Adjustment Knob left and right to raise/lower to the desired level, and finally press the button to confirm the modification.



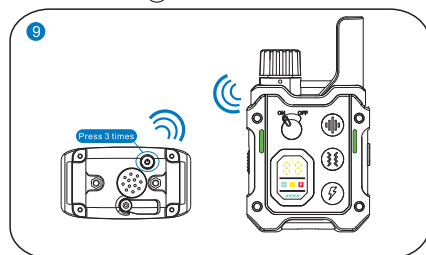
Vibration Command: Press the Vibration Button, and the green Indicator Light on the Remote Transmitter rapidly lights up. The Receiver will deliver vibration, and the green LED Indicator light on the Receiver comes up simultaneously. To adjust the Vibration level, press the Adjustment Knob to select the Vibration Mode first, then turn the Adjustment Knob left and right to raise/lower to the desired level, and finally press the button to confirm the modification.



Shock Command: Press the Shock Button, and the red indicator Light on the Remote Transmitter rapidly lights up. The Receiver will deliver a shock and the green LED Indicator light on the Receiver comes up simultaneously. To adjust the Shock level, press the Adjustment Knob to select the Shock Mode first, then turn the Adjustment Knob left and right to raise/lower to the desired level, and finally press (F) button to confirm the modification.

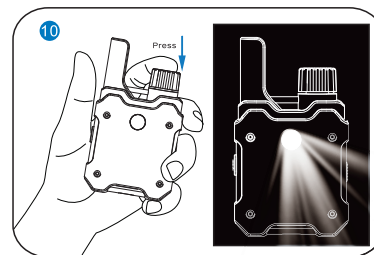


To change the channel, slide the Channel Switch located on the left side of the Remote Transmitter. This product can train up to 2 dogs.



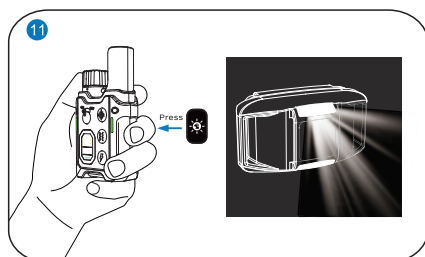
Steps to pair the Remote Transmitter to the Receiver:

1. Press and hold the Power Button on the Receiver for 2 seconds to turn it on. Turn on the Remote Transmitter by slide the Switch to 'ON' on the Remote Transmitter; 2. Press the Power Button on the Receiver 3 times to enter the Pairing Mode. You will hear a beeping tone and the Indicator becomes solid green. You will now have 10 seconds to finish the pairing; Press the Warning Tone Button, Vibration Button, or Shock Button on the Remote Transmitter and Receiver will respond correspondingly indicating that the pairing process is completed. Please refer to "VI. Paring Up" on page 15 for more details.

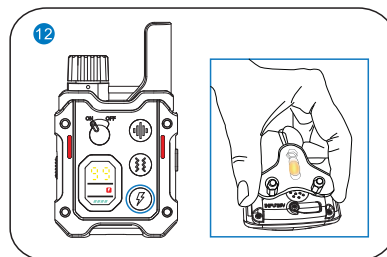


Illuminating Light Mode: Press and hold the Adjustment Knob/Illuminating Light Button on the Remote Transmitter for 2 seconds, the light on the back of the remote will remain on to provide illumination. Press and hold the Adjustment Knob /Illuminating Light Button 2 seconds again, the illuminating light will turn off.

Note: Once the Illuminating Light is on, it will cut off automatically after 30 minutes if there is no operation on the Remote Transmitter.



Positioning Light Mode: Press the Positioning Light Button on the right side of the Remote Transmitter. The LED Light on the Receiver will illuminate rapidly while the 'L1' icon is shown on the Remote Transmitter.
Note: When the Positioning Light Button is pressed or held, the LED light on the Receiver will illuminate or remain on simultaneously.



Test the Receiver with the Test Bulb:

1. Turn the Receiver on.
2. Hold the Test Bulb to the Metal Prongs on the Receiver. Make sure the metal wire in the Test Bulb has direct contact with both of the top of the Metal Prongs.
3. Press the Shock Button on the Remote Transmitter.
4. The Red Test Light will flash if the Receiver works normally. At higher shock levels, the Test Bulb will flash brighter.

Note:

(1) While you test the Receiver with your fingers, please put your two fingers on the top of the Metal Prongs separately to form a closed loop circle.

(2) Please always start from the lowest Shock level to avoid accident hurt.

How the System Works

The Remote Training Collar is easy to use with an advanced digital display that tells you the exact stimulation level you are using.

The Remote Training Collar assists you in controlling your dog without a leash. At the push of a button, your Remote Transmitter sends a signal activating your dog's Receiver. He receives a safe but annoying stimulation.

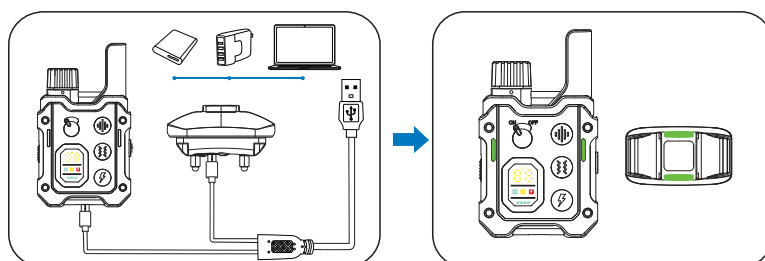
He'll quickly learn the association between his behavior and your correction, and soon you'll have a better-behaved dog. The Remote Training Collar has been proven safe, comfortable, and effective for both small and large dog breeds.

If using the Remote Training Collar consistently and correctly, any basic obedience commands can be taught and will help correct any misbehavior that your dog exhibits.

V. Setting Up

1. Charge the Product

Charge both the Receiver and Remote Transmitter with the USB Type-C Charging Cable in the package box until their Indicator becomes solid green which will take around 2-3 hours.

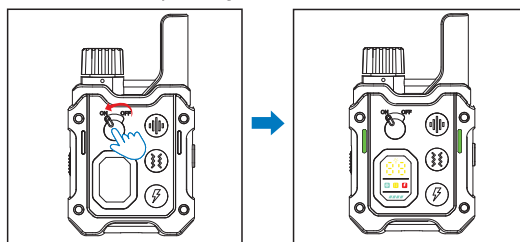


Note:

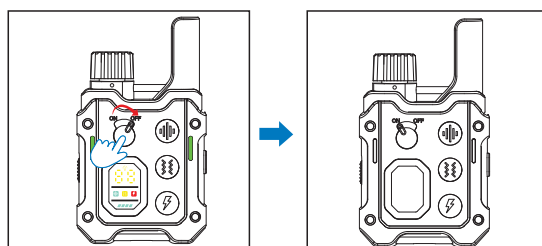
- (1) The charger, power bank and other charging devices shown in the above picture are not included in the box.
- (2) Use the charging cable in the package when charging. Other charging cables may not be suitable for this Dog Training Collar, which may cause electric damage.
- (3) The Dog Training Collar ONLY supports a 5V-rated power source. If charged with an improper charger:
Receiver Collar—deliver a rapid warning tone and stop charging automatically.
Remote Transmitter—stop charging automatically with the Indicator rapidly blinking in red.

2. Turn On/Off the Product

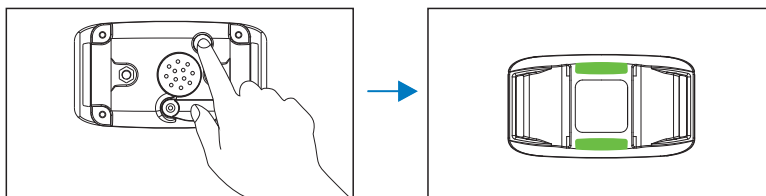
Turn on the Remote Transmitter by sliding the Switch to ' ON ' , and the Color Display will light up.



Turn off the Remote Transmitter by sliding the Switch to ' OFF ' , and the Color Display will shut down.



Turn on the Receiver by pressing and holding the Power Button for 3 seconds with a short beeping and vibration to indicate that the Receiver turns on, as the green LED Indicator light blinks regularly.




Turn off the Receiver by pressing and holding the Power Button for 3 seconds with a long beeping to indicate that the Receiver turns off, as the green LED Indicator light stops blinking.

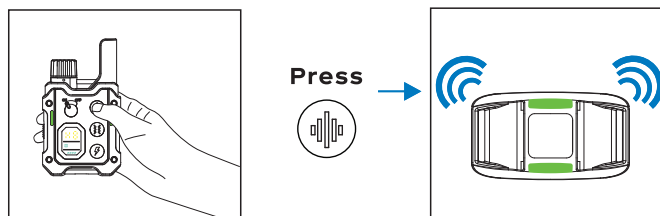


VI. Training Modes

1.Warning Tone Mode


Press the Warning Tone Button and the Receiver Collar will deliver a warning tone. It will cut off automatically if you press and hold the Warning Tone Button for 10 seconds. There is a total of 8 levels of Warning Tone for training.

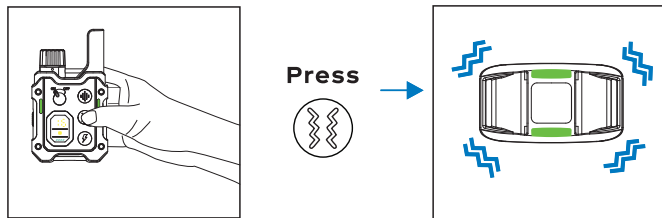
To adjust the warning tone level, press the Adjustment Knob to select the Warning Tone Mode first, then turn the Adjustment Knob left and right to raise/lower to the desired level, and finally press  button to confirm the modification.



2.Vibration Mode


Press the Vibration Button and the Receiver will deliver a vibration. It will cut off automatically if you press and hold the Vibration Button for 10 seconds. There is a total of 16 levels of Vibration.

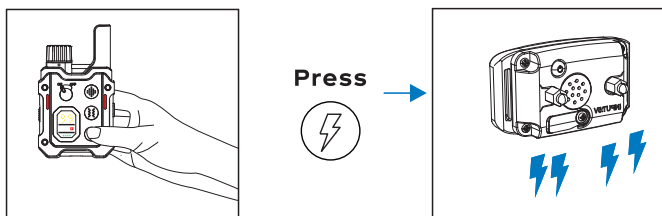
To adjust the vibration level, press the Adjustment Knob to select the Vibration Mode first, then turn the Adjustment Knob left and right to raise/lower to the desired level, and finally press  button to confirm the modification.

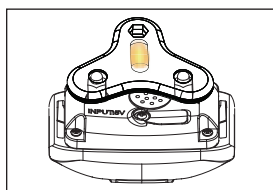


3.Shock Mode

Press the Shock Button and the Receiver will deliver a static shock. It will cut off automatically if you press and hold the Shock Button for 10 seconds. There is a total of 99 levels of Shock.

To adjust the shock level, press the Adjustment Knob to select the Shock Mode first, then turn the Adjustment Knob left and right to raise/lower to the desired level, and finally press  button to confirm the modification.

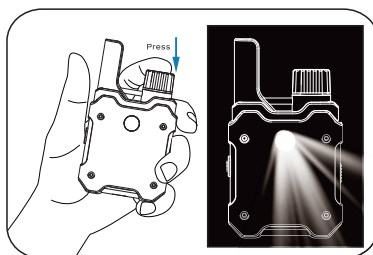




When testing the Shock function for the first time, place the Test Bulb on the Contact Points. The Test Bulb lights up to indicate that the Shock function is working, and it will become brighter at higher shock levels.

4. Illuminating Light Mode

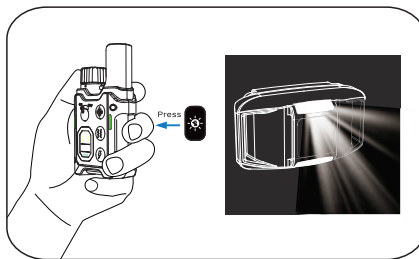
To turn on the illuminating light, press and hold the Adjustment Knob/Illuminating Light Button on the Remote Transmitter for 2 seconds. The light on the back of the remote will remain on to provide illumination. To turn off the illuminating light, press and hold the Adjustment Knob/Illuminating Light Button 2 seconds again.



Note: Once the Illuminating Light is on, it will cut off automatically after 30 minutes if there is no operation on the Remote Transmitter.

5. Positioning Light Mode

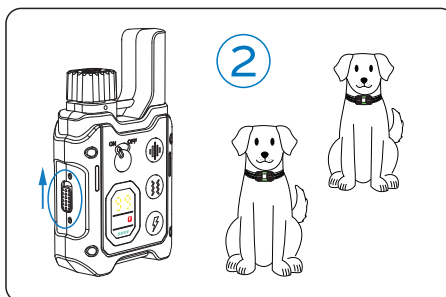
Press the Positioning Light Button on the right side of the Remote Transmitter. The LED Light on the Receiver will illuminate rapidly while the 'L1' icon are shown on the Remote Transmitter.



Note: When the Positioning Light Button is pressed or held, the LED light on the Receiver will illuminate or remain on simultaneously.

6. Switching Channels

Use the Channel Switch on the left side of the Remote Transmitter to select the Receiver you wish to control if you have paired two Receivers.



Note:

The Remote Transmitter will go into the sleep mode if no operation in one minute saving battery power.