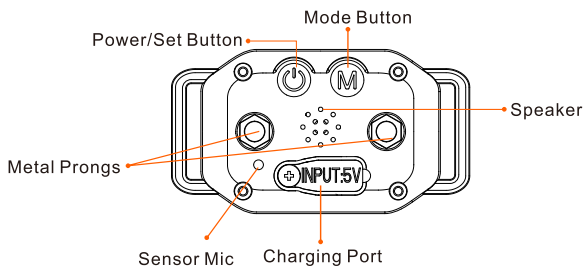
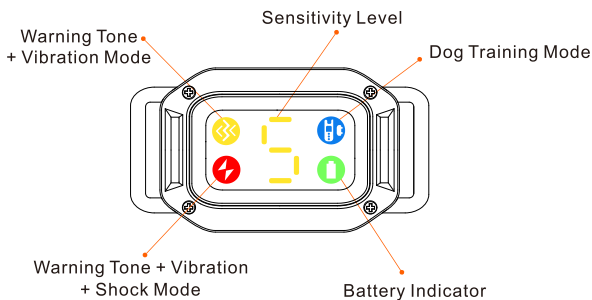


## Receiver/Bark Control Collar



### Mode Icons




Warning Tone +Vibration



Warning Tone +Vibration+Shock

### Sensitivity Level

1-5

Adjust the sensitivity level from 1-5 by pressing the Power/Set Button . Level 5 is the most sensitive and level 1 is the least sensitive

## Protection Mode



Product is in a 30-second Protection Period

## Test Mode



When the product is set on Test Mode, the digit shows 0 and then will show 5 after the test is completed, or if the test is not operated within 5 seconds

## Indicators



Blinking in medium speed: the product is on charge



Blinking in low speed: the product is on standby



Blinking in high speed: the battery is low

## How the System Works

The **2 IN 1 DOG TRAINING COLLAR & BARK CONTROL COLLAR** is easy to use with an advanced digital display that tells you the exact stimulation level you are using.

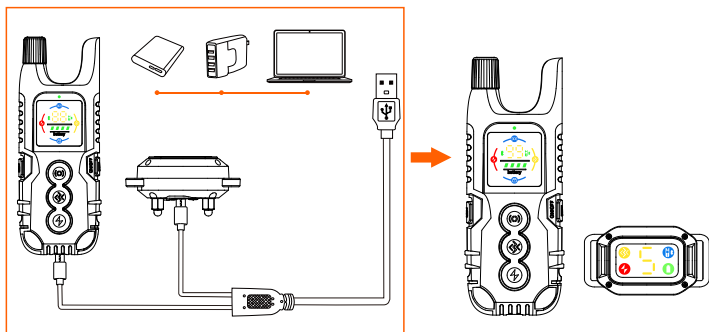
The **Dog Training Mode** assists you in controlling your dog without a leash. At the push of a button, your Remote Transmitter sends a signal activating your dog's Receiver. He receives a safe but annoying stimulation. He'll quickly learn the association between his behavior and your correction, and soon you'll have a better-behaved dog. The **Bark Control Mode** detects the dog bark and automatically deliver Warning Tone, Vibration and Shock, the dogs will learn quickly from the stimulation and stop barking.

The **2 IN 1 DOG TRAINING COLLAR & BARK CONTROL COLLAR** has been proven safe, comfortable, and effective for both small and large dog breeds. If using the **2 IN 1 DOG TRAINING COLLAR & BARK CONTROL COLLAR** consistently and correctly, any basic obedience commands can be taught and will help correct any misbehavior that your dog exhibit.

## V. Setting Up

### 1. Charge the Product

Charge both the Receiver/Bark Control Collar and the Remote Transmitter with the charging cable in the package box until their Indicator becomes solid green which will take around 2-3 hours.



#### Note:

(1) The charger, power bank and other charging devices shown in the above picture are not included in the box.

(2) Use the charging cable in the package when charging. Other charging cables may not be suitable for this **2 IN 1 DOG TRAINING COLLAR & BARK CONTROL COLLAR**, which may cause electric damage.

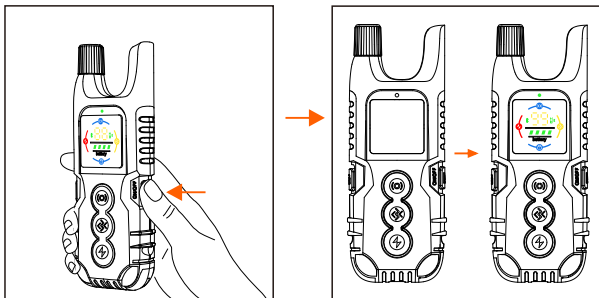
(3) The **2 IN 1 DOG TRAINING COLLAR & BARK CONTROL COLLAR** ONLY supports a 5V-rated power source. If charged with an improper charger:

**Receiver/Bark Control Collar**—deliver a rapid warning tone and stop charging automatically.

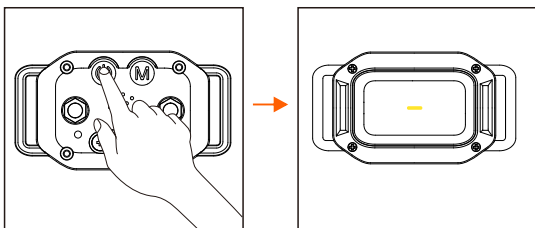
**Remote Transmitter**—stop charging automatically with the Indicator rapidly blinking in red.

## 2. Turn On/Off the Product

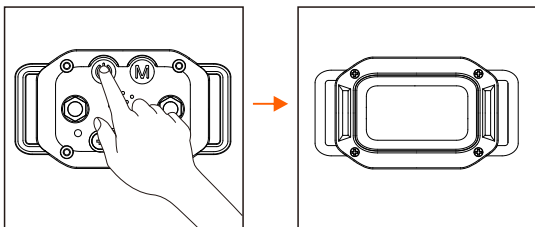
Turn on/off the Remote Transmitter by pressing and holding the Mode (On/Off) Button for 2-3 seconds.



Turn on the Receiver/Bark Control Collar by pressing and holding the Power Button for 3 seconds with vibration, as the white LED Indicator light blinks regularly.



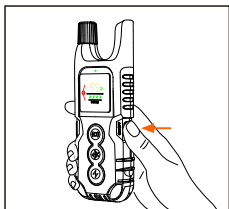
Turn off the Receiver/Bark Control Collar by pressing and holding the Power Button for 3 seconds with a long beeping, as the white LED Indicator light stops blinking.



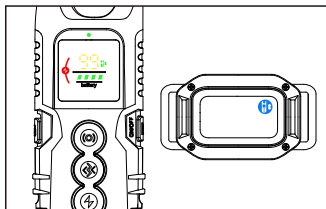
## VI. Training Modes

### 1. Dog Training Mode

Press the Mode Button on the Remote Transmitter, the green indicator light on the Remote Transmitter will light up (both the Dog Training Mode icons on the Displays of the Remote Transmitter and the Receiver light up simultaneously). The **2 IN 1 DOG TRAINING COLLAR & BARK CONTROL COLLAR** will enter the **DOG TRAINING MODE**.

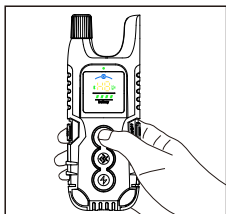


Press

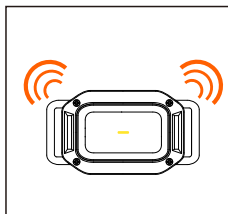


#### 1A. Warning Tone Command:

Press the Warning Tone Button and the Receiver/Bark Control Collar will deliver a warning tone. It will cut off automatically if you press and hold the Warning Tone Button for 10 seconds. There is a total of 8 levels of Warning Tone for training which you can adjust by selecting the Warning Tone Button and pressing the Level Up/Down Button.

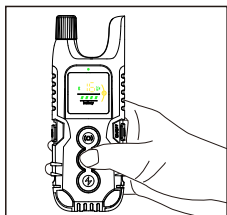


Press

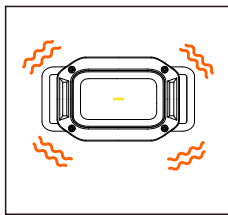


#### 1B. Vibration Command:

Press the Vibration Button and the Receiver/Bark Control Collar will deliver a vibration. It will cut off automatically if you press and hold the Vibration Button for 10 seconds. There is a total of 16 levels of Vibration for training which you can adjust by selecting the Vibration Button and pressing the Level Up/Down Button.

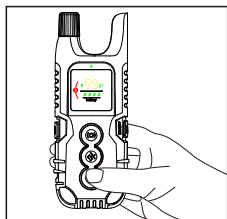


Press

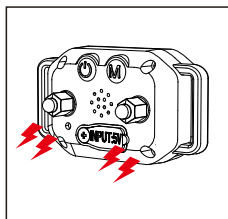


### 1C. Shock Command:

Press the Shock Button and the Receiver/Bark Control Collar will deliver a static shock. It will cut off automatically if you press and hold the Shock Button for 10 seconds. There is a total of 99 levels of Shock for training which you can adjust by selecting the Shock Button and pressing the Level Up/Down Button.

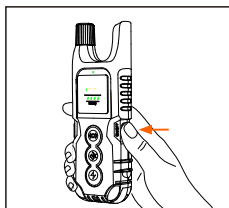


Press

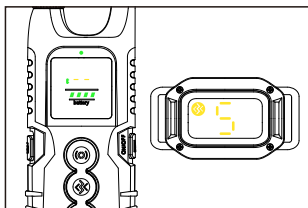


## 2. Bark Control Mode

Press the Mode Button on the Remote Transmitter, the green indicator light on the Remote Transmitter will light up (the Bark Control Mode icon on the Display of the Remote Transmitter will light up). The **2 IN 1 DOG TRAINING COLLAR & BARK CONTROL COLLAR** will enter the **Bark Control Mode**.

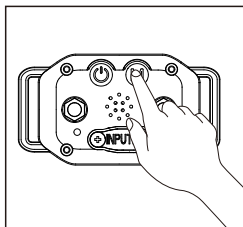


Press

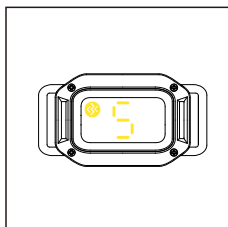


### 2A. Variable Warning Tone + Vibration Mode

Press the Mode Button to enter the Warning Tone + Vibration Mode, the Working Mode is 6 Variable Warning Tone + 3 Levels of Vibration working collaboratively in 6 steps. Adjust the sensitivity level from 1-5 by pressing the the Power/Set Button. Level 5 is the most sensitive and level 1 is the least sensitive.

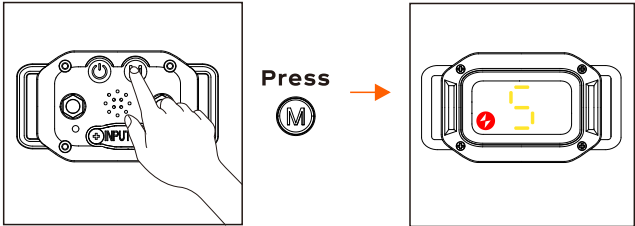


Press

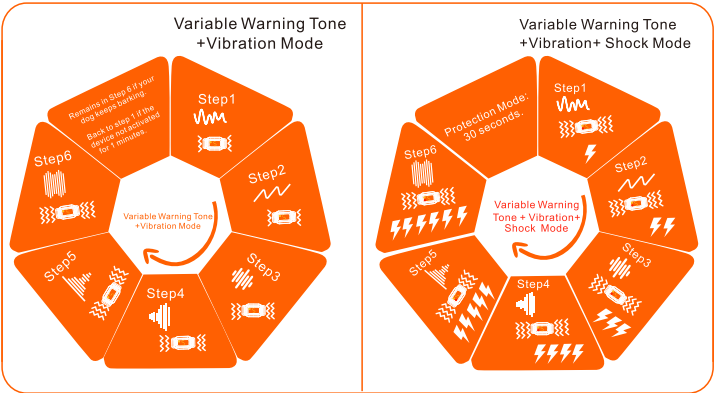


## 2B.Variable Warning Tone + Vibration + Shock Mode

Press the Mode Button to enter the Warning Tone + Vibration + Shock Mode, the Working Mode is 6 Variable Warning Tone + Strong Vibration + 6 Levels of Shock working collaboratively in 6 steps. Adjust the sensitivity from 1-5 by pressing the Power/Set Button. Level 5 is the most sensitive and level 1 is the least sensitive.



## 2C. How it works?

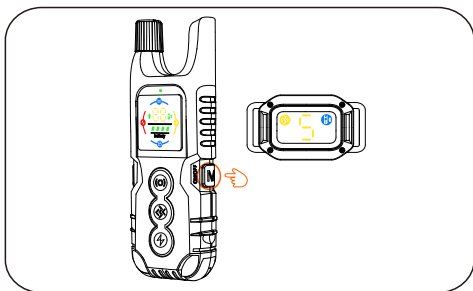


### NOTES:

- (1)The product will go to the next step if your dog keeps barking within 30 seconds.
- (2)The product will automatically go back to Step 1 if it is not activated within 1 minutes.

### 3. Dog Training & Bark Control Mode

Press the Mode Button on the Remote Transmitter, the green indicator light on the Remote Transmitter will light up (the Dog Training Mode icon and Bark Control Mode icon on the Display of the Remote Transmitter and the Dog Training Mode icon on the Receiver/Bark Control Collar will light up simultaneously). The **2 IN 1 DOG TRAINING COLLAR & BARK CONTROL COLLAR** will enter the **Dog Training & Bark Control Mode**.

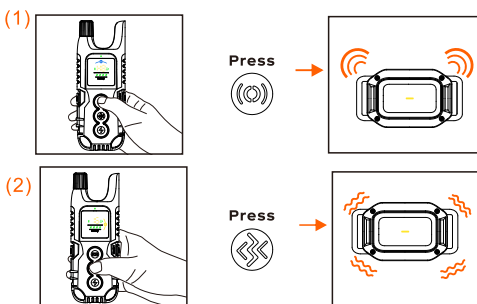


#### 3A. Dog Training Mode:

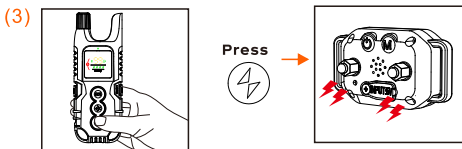
(1) Press the Warning Tone Button and the Receiver/Bark Control Collar will deliver a warning tone. It will cut off automatically if you press and hold the Warning Tone Button for 10 seconds. There is a total of 8 levels of Warning Tone for training which you can adjust by selecting the Warning Tone Button and pressing the Level Up/Down Button.

(2) Press the Vibration Button and the Receiver/Bark Control Collar will deliver a vibration. It will cut off automatically if you press and hold the Vibration Button for 10 seconds. There is a total of 16 levels of Vibration for training which you can adjust by selecting the Vibration Button and pressing the Level Up/Down Button.

(3) Press the Shock Button and the Receiver/Bark Control Collar will deliver a static shock. It will cut off automatically if you press and hold the Shock Button for 10 seconds. There is a total of 99 levels of Shock for training which you can adjust by selecting the Shock Button and pressing the Level Up/Down Button.



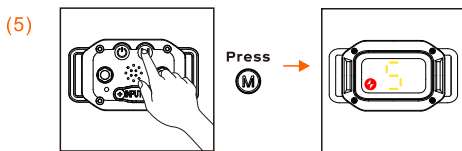
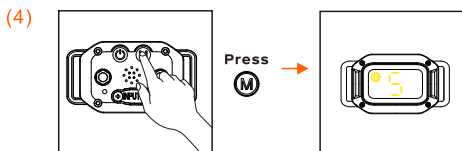




### 3B. Bark Control Mode

(4) Press the Mode Button to enter the Warning Tone + Vibration Mode, the Working Mode is 6 Variable Warning Tone + 3 Levels of Vibration working collaboratively in 6 steps. Adjust the sensitivity level from 1-5 by pressing the Power/Set Button. Level 5 is the most sensitive and level 1 is the least sensitive.

(5) Press the Mode Button to enter the Warning Tone + Vibration + Shock Mode, the Working Mode is 6 Variable Warning Tone + Strong Vibration + 6 Levels of Shock working collaboratively in 6 steps. Adjust the sensitivity level from 1-5 by pressing the Power/Set Button. Level 5 is the most sensitive and level 1 is the least sensitive.



## VII. Fitting the Receiver/Bark Control Collar

### IMPORTANT:

The proper fit and placement of your Receiver/Bark Control Collar are important for effective training. The Metal Prongs with Conductive Silicone Caps must have direct contact with your dog's skin on the underside of his neck. To assure a proper fit, please follow these steps:

1. Make sure that the Receiver/Bark Control Collar is turned off.
2. Let your dog stand on four feet or lay down fully (A).
3. Place the Receiver/Bark Control Collar on your dog's neck close to the ears. Center the Metal Prongs underneath your dog's neck, touching the skin (B).  
Note: It is sometimes necessary to trim the hair around the Metal Prongs to make sure that contact is consistent.
4. The Receiver/Bark Control Collar should fit snugly, yet loose enough to allow one finger to fit between the strap and your dog's neck (C).