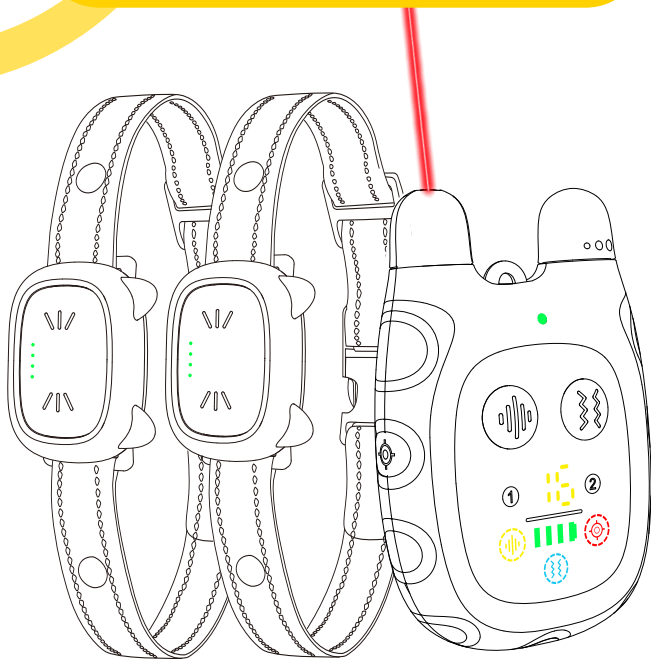




CAT TRAINER



Model: CP1



I. Important Safety Information:

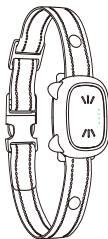
Before you use this product for the first time, please read and follow the instructions in this manual carefully. The cautions below will help keep your cat safe and comfortable.

- ◆ **DO NOT** aim the Laser Emission Port directly at your eyes.
- ◆ **DO NOT** aim the laser beam at a person.
- ◆ **DO NOT** aim the laser beam directly into your cat's eyes or the eyes of other animals.
- ◆ **NOT** intended as a toy for children.
- ◆ **DO NOT** allow young children to use this product to play with your cat without adult supervision.
- ◆ If you notice your cat exhibiting unusual behavior, immediately discontinue the use of the product.
- ◆ Consult with a veterinarian before resuming use of the product.
- ◆ **DO NOT** use this product while your cat is eating, drinking, or resting. Disturbing your cat's routine may cause anxiety or aggression.
- ◆ **DO NOT** use this product to punish your cat, as it may cause fear or disgust.
- ◆ Avoid keeping the receiver on your cat's neck for extended periods. It is recommended to use the receiver for no more than 12 hours per day. Prolonged use may lead to discomfort or skin damage for your cat.
- ◆ Check the fit to prevent excessive pressure; follow the instructions in this manual.
- ◆ The Receiver Collar meets IP67 waterproof rating, it can be submerged in water up to 1 meter for up to 30 minutes. If submerged and wet, please do not use it.
- ◆ **DO NOT** charge the device near any flammable substances.
- ◆ **DO NOT** attempt to disassemble or modify the product yourself. This may cause damage to the product or create safety hazards.

II. Package Content



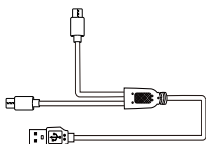
Remote Transmitter



Receiver Collar



Wrist Strap



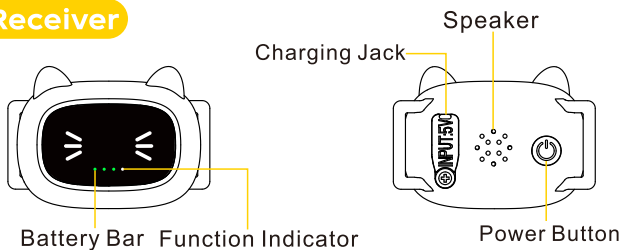
USB Type-C Cable



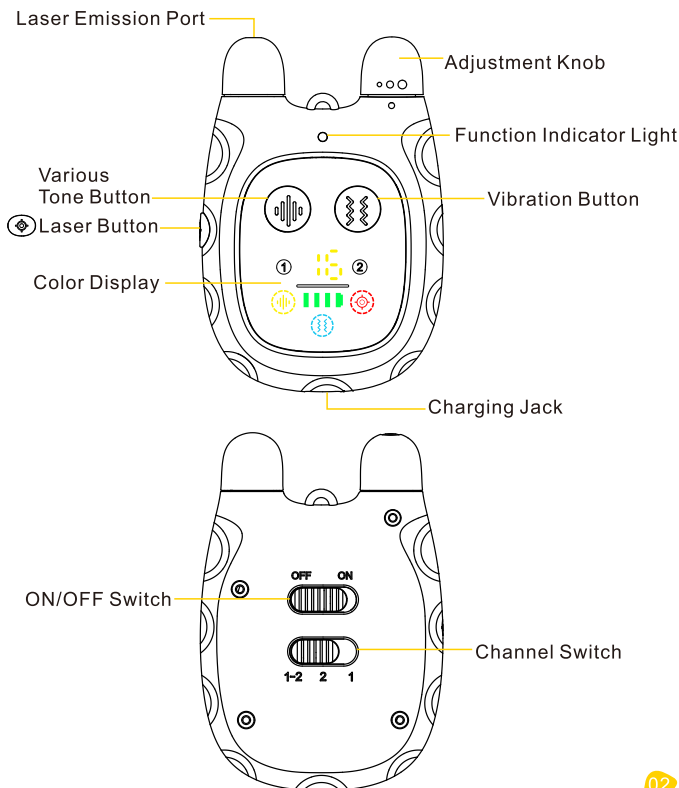
User Manual

III. Product Overview

Receiver



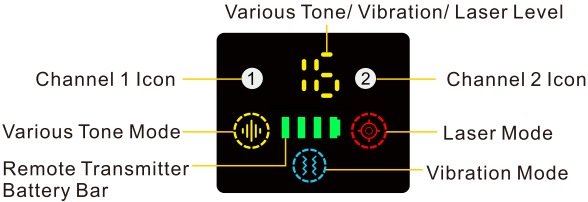
Remote Transmitter



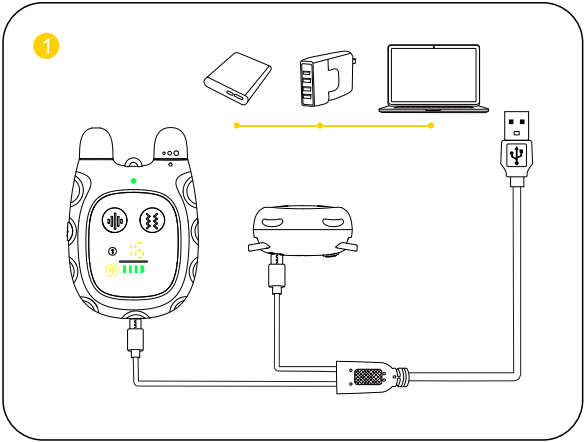
Note:

The Remote Transmitter will go into sleep mode if there is no operation in the 30s.

Color Display



IV. Quick Start Guide



Charge the Receiver and the Remote Transmitter for 2-3 hours with the double-headed USB Type-C Cable from the package box.

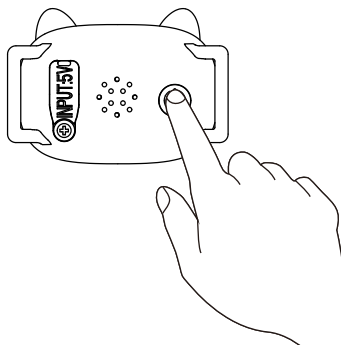
Note: The charger, power bank and other charging devices shown in the above picture are not included in the box.

2



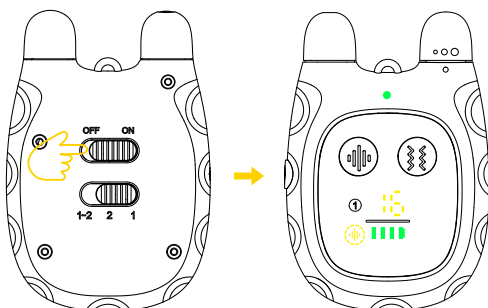
Let your cat stand on all fours or lay down fully. Fit the Receiver to your cat by leaving one finger space between the Receiver Collar and your cat's neck. Center the Receiver underneath your cat's neck.

3



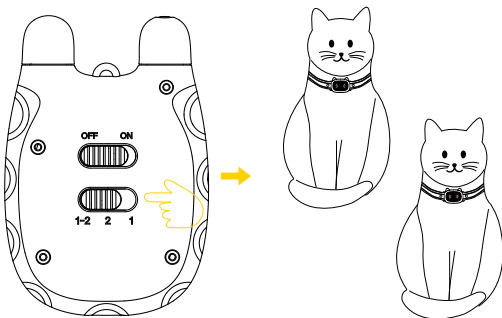
Turn on the Receiver by pressing and holding the Power Button for 2 seconds with a vibration to indicate that the Receiver is turned on, and then the White Indicator on the Color Display continues to blink regularly.

4



To turn on the Remote Transmitter, slide the Switch to ' ON ', and the Color Display will light up.

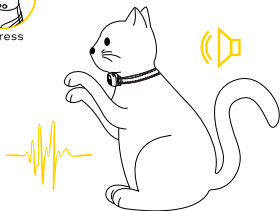
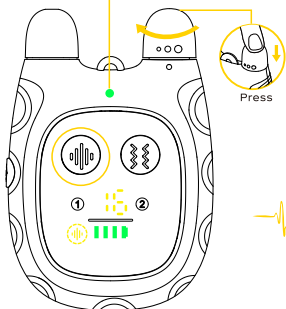
5



This product can train up to 2 cats. You can either train 2 cats independently by sliding the Channel Switch to '1' or '2', or train two cats simultaneously by sliding the Channel Switch to '1-2'. This Receiver is paired to the Channel 1 by the factory default setting, if you have an extra receiver to pair up, please follow the instructions in the section Pairing Up on page 14.

6

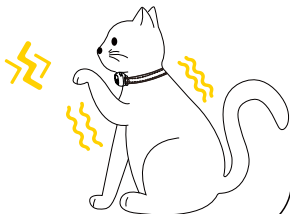
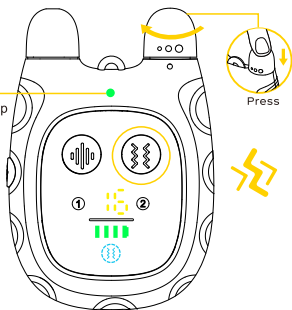
The green Indicator lights up



Various Tones Mode: Press the Various Tone Button, and the Yellow Tones Icon (🔊) on the Remote Transmitter rapidly lights up. The Receiver will deliver a tone, and the White Indicator on the Receiver comes up simultaneously. To change a different Tone, press the Adjustment Knob to select the Various Tone Mode first, then turn the Adjustment Knob left and right to raise/lower to the desired type, and finally press (🔊) button to confirm the modification.

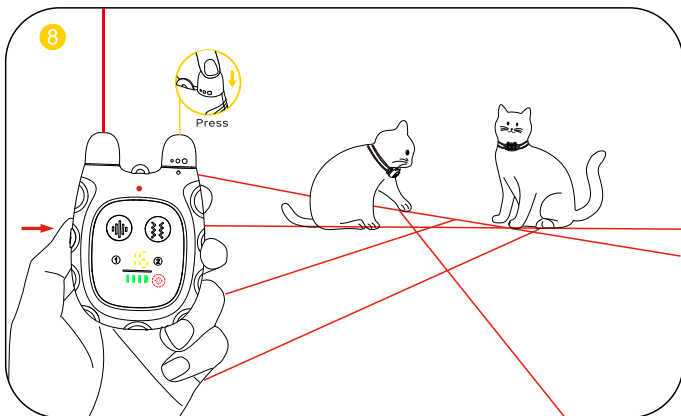
7



The green Indicator lights up



Vibration Mode: Press the Vibration Button, and the Blue Vibration Icon (🔊) on the Remote Transmitter rapidly lights up. The Receiver will deliver vibration, and the White Indicator on the Receiver comes up simultaneously. To adjust the Vibration level, press the Adjustment Knob to select the Vibration Mode first, then turn the Adjustment Knob left and right to raise/lower to the desired level, and finally press (🔊) button to confirm the modification.

8



Laser Mode: Press the Laser Button, and the Red Laser Icon  on the Remote Transmitter rapidly lights up. The Laser Emission Port on the Remote Transmitter will emit a Laser Beam. To adjust the Laser frequency, press the Adjustment Knob to select the Laser Mode first, then turn the Adjustment Knob left and right to raise/lower to the desired frequency, and finally press  button to confirm the modification.

CAUTION:

- ◆ DO NOT aim the Laser Emission Port directly at your eyes.
- ◆ DO NOT aim the laser beam at a person.
- ◆ DO NOT aim the laser beam directly into your cat's eyes or the eyes of other animals.

Tips:

For detailed operating instructions, please refer to the specific steps.

How the System Works

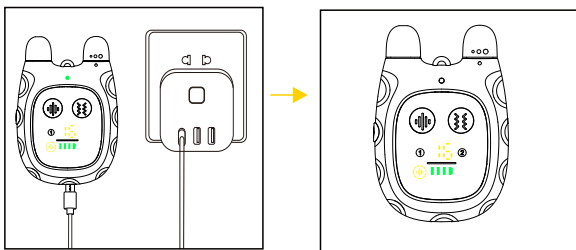
This Cat Trainer uses wireless signals to give cats sensory stimulation that meets their natural needs while keeping them safe and entertained. Here's how it works:

1. **Signal Transmission:** When you press the button on the Remote Transmitter, it sends a wireless signal of a specific frequency.
2. **Receiving:** The Receiver attached to your cat's collar picks up the wireless signal from the Remote Transmitter.
3. **Function Activation:** The receiver activates a specific function based on the signal received:
 - ***Tones Module:** Plays 16 different tones, like squeaky toy sounds, bird and mouse chirping, and other tones to spark the cat's curiosity.
 - ***Vibration Module:** Produces 16 gentle vibrations to help manage the cat's behavior.
 - ***Laser Module:** Emits 8 different laser beams to encourage cats to chase.
4. **Safety Stimulation:** All functions are designed to be safe. The lasers, tones, and vibrations are within safe ranges, ensuring they won't harm cats while still grabbing their attention and interest.

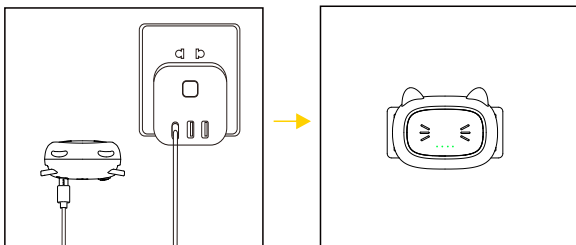
V. Setting Up

1.Charge the Product

Remote Transmitter: charge the device until the rapidly flashing battery bar becomes constantly on, which will take around 3 hours.



Receiver: charge the device until the rapidly flashing green Indicator becomes constantly on, which will take around 3 hours.

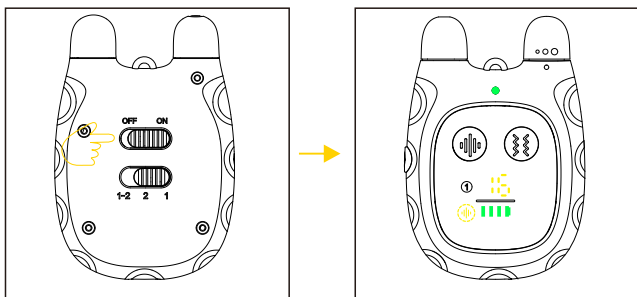


Note:

- (1)The charger, power bank and other charging devices shown in the above picture are not included in the box.
- (2)Use the charging cable in the package when charging. Other charging cables may not be suitable for this Cat Trainer, which may cause electric damage.
- (3)The Cat Trainer ONLY supports a 5V-rated power source. If charged with an improper charger:
Receiver Collar—deliver a rapid warning tone and stop charging automatically.
Remote Transmitter—stop charging automatically with the Indicator rapidly blinking in red.

2. Turn On/Off the Product

To turn on the Remote Transmitter, slide the Switch to ' ON ', and the Color Display will light up.



To turn off the Remote Transmitter, slide the Switch to ' OFF ', and the Color Display will shut down.

