



Shenzhen CTA Testing Technology Co., Ltd.

Room 106, Building 1, Yibaolai Industrial Park, Qiaotou Community, Fuhai Street, Bao'an District, Shenzhen, China

TEST REPORT

FCC Rules and Regulations Part 15 Subpart C (Section 15.209)

Report Reference No.....: CTA24072400901

FCC ID.....: 2AYA5-T15

Compiled by

(position+printed name+signature)....: File administrators Jinghua Xiao

Supervised by

(position+printed name+signature)....: Test Engineer Lushan Kong

Approved by

(position+printed name+signature)....: Manager Eric Wang



Date of issue.....: Aug 16, 2024

Representative Laboratory Name ..: Shenzhen CTA Testing Technology Co., Ltd.

Address.....: Room 106, Building 1, Yibaolai Industrial Park, Qiaotou Community, Fuhai Street, Bao'an District, Shenzhen, China

Applicant's name ..: Shenzhen ICHECKKEY Technology Co.,Ltd.

Address ..: B302, Building 4, TianYanXuan, No.1 Lane14, Bantian East Village, Bantian Street, LongGang District, Shenzhen China. 518000

Test specification ..:

Standard ..: FCC Rules and Regulations Part 15 Subpart C (Section 15.209)

Shenzhen CTA Testing Technology Co., Ltd. All rights reserved.

This publication may be reproduced in whole or in part for non-commercial purposes as long as the Shenzhen CTA Testing Technology Co., Ltd. is acknowledged as copyright owner and source of the material. Shenzhen CTA Testing Technology Co., Ltd. takes no responsibility for and will not assume liability for damages resulting from the reader's interpretation of the reproduced material due to its placement and context.

Test item description ..: T15 2 in 1 Foldable Magnetic Wireless Charger Stand

Trade Mark ..: ICHECKKEY

Manufacturer ..: Shenzhen ICHECKKEY Technology Co.,Ltd.

Model/Type reference.....: T15

List Model ..: N/A

Modulation Type ..: ASK

Operation Frequency.....: 115-205KHz

Ratings ..: Input: DC5.0V/3.0A, 9.0V/2.22A, 12.0V/1.67A 20W(MAX)

Output 1: Phones 15W(MAX)

Output 2:Watch 2.5W(MAX)

Result.....: **PASS**

TEST REPORT

Test Report No. :	CTA24072400901	Aug 16, 2024
		Date of issue

Equipment under Test : T15 2 in 1 Foldable Magnetic Wireless Charger Stand

Model /Type : T15

Listed Models : N/A

Applicant : **Shenzhen ICHECKKEY Technology Co.,Ltd.**

Address : B302, Building 4, TianYanXuan, No.1 Lane14, Bantian East Village, Bantian Street, LongGang District, Shenzhen China. 518000

Manufacturer **Shenzhen ICHECKKEY Technology Co.,Ltd.**

Address : B302, Building 4, TianYanXuan, No.1 Lane14, Bantian East Village, Bantian Street, LongGang District, Shenzhen China. 518000

Test Result:	PASS
--------------	------

The test report merely corresponds to the test sample.
It is not permitted to copy extracts of these test result without the written permission of the test laboratory.

Contents

1. TEST STANDARDS	4
2. SUMMARY	5
2.1. General Remarks	5
2.2. Product Description	5
2.3. Equipment Under Test	5
2.4. EUT Exercise Software	6
2.5. Special Accessories	6
2.6. External I/O Cable	6
2.7. Modifications	6
3. TEST ENVIRONMENT	7
3.1. Address of the test laboratory	7
3.2. Test Facility	7
3.3. Test Description	7
3.4. Statement of the measurement uncertainty	7
3.5. Equipments Used during the Test	8
4. TEST CONDITIONS AND RESULTS	9
4.1. AC Power Conducted Emission	9
4.2. Radiated Emission	12
4.3. Occupied Bandwidth	16
4.4. Antenna Requirement	17
5. TEST SETUP PHOTOS OF THE EUT	18
6. EXTERNAL AND INTERNAL PHOTOS OF THE EUT	20

1. TEST STANDARDS

The tests were performed according to following standards:

[FCC Rules and Regulations Part 15 Subpart C \(Section 15.209\)](#): Radiated emission limits; general requirements.

[ANSI C63.10: 2020](#): American National Standard for Testing Unlicensed Wireless Devices

2. SUMMARY

2.1. General Remarks

Date of receipt of test sample	:	Jul.22, 2024
Testing commenced on	:	Jul.22, 2024
Testing concluded on	:	Aug 15, 2024

2.2. Product Description

Product Name:	T15 2 in 1 Foldable Magnetic Wireless Charger Stand
Trade Mark:	ICHECKKEY
Model/Type reference:	T15
List Model:	N/A
Power supply:	Input: DC5.0V/3.0A, 9.0V/2.22A, 12.0V/1.67A 20W(MAX) Output 1: Phones 15W(MAX) Output 2: Watch 2.5W(MAX)
Hardware Version	N/A
Software Version	N/A
WPT	
Frequency Range	115.0~205.0KHz
Modulation Type	ASK (Continuous Wave)
Load Sensing	Contact transmission
Antenna Type	Coil Antenna
Antenna gain	0dBi

2.3. Equipment Under Test

Power supply system utilised

Power supply voltage	:	<input type="radio"/> 230V / 50 Hz	<input type="radio"/> 120V / 60Hz
		<input checked="" type="radio"/> 12 V DC	<input type="radio"/> 24 V DC
		<input type="radio"/> Other (specified in blank below)	

DC 12.0V

Description of the test mode

Operation Frequency each of channel	
Channel	Frequency
1	126.78KHz

Mode	AC mode
Mode 1	Wireless Charging 15W(Wireless Output 1)+ Wireless Charging 2.5W(Wireless Output 2)
Mode 2	Wireless Charging 15W(Wireless Output 1)
Mode 3	Wireless Charging 2.5W(Wireless Output 2)

- Note :1.EUT has one Type-C port, The Type-C supports wireless charging in AC mode.
 2. All the modes have been tested and recorded worst mode in the report(Mode 1).
 3. All modes were tested for load states less than 1%, less than 50%, and less than 99%.

2.4. EUT Exercise Software

N/A

2.5. Special Accessories

Manufacturer	Description	Model	Serial Number	Certificate
LANTO ELECTRONNIC LIMITED	Adapter	191106C	--	SDOC
Apple	Watch	Apple Watch Series 8	--	SDOC

Note: The Adapter and Watch only used for auxiliary testing.

2.6. External I/O Cable

I/O Port Description	Quantity	Cable
DC IN Port	1	1.0M, Unscreened Cable

2.7. Modifications

No modifications were implemented to meet testing criteria.

3. TEST ENVIRONMENT

3.1. Address of the test laboratory

Shenzhen CTA Testing Technology Co., Ltd.

Room 106, Building 1, Yibaolai Industrial Park, Qiaotou Community, Fuhai Street, Bao'an District, Shenzhen, China

3.2. Test Facility

The test facility is recognized, certified, or accredited by the following organizations:

FCC-Registration No.: 517856 Designation Number: CN1318

Shenzhen CTA Testing Technology Co., Ltd. has been listed on the US Federal Communications Commission list of test facilities recognized to perform electromagnetic emissions measurements.

A2LA-Lab Cert. No.: 6534.01

Shenzhen CTA Testing Technology Co., Ltd. has been listed by American Association for Laboratory Accreditation to perform electromagnetic emission measurement.

The 3m-Semi anechoic test site fulfils CISPR 16-1-4 according to ANSI C63.10 and CISPR 16-1-4:2010.

3.3. Test Description

Description Of Test	Result
Conducted Emissions Test	Compliant
Radiated Emission Test	Compliant
Occupied Bandwidth Measurement	Compliant
Antenna Requirement	Compliant

3.4. Statement of the measurement uncertainty

Measurement Uncertainty		
Conducted Emission Expanded Uncertainty	=	2.23dB, k=2
Radiated emission expanded uncertainty(9kHz-30MHz)	=	3.08dB, k=2
Radiated emission expanded uncertainty(30MHz-1000MHz)	=	4.42dB, k=2
Radiated emission expanded uncertainty(Above 1GHz)	=	4.06dB, k=2

3.5. Equipments Used during the Test

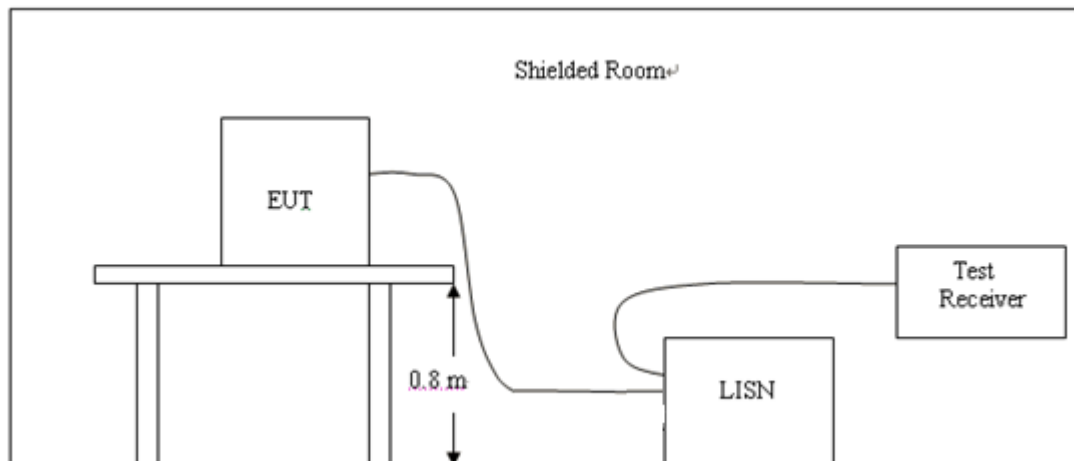
Test Equipment	Manufacturer	Model No.	Equipment No.	Calibration Date	Calibration Due Date
LISN	R&S	ENV216	CTA-308	2024/08/01	2025/07/31
LISN	R&S	ENV216	CTA-314	2024/08/01	2025/07/31
EMI Test Receiver	R&S	ESPI	CTA-307	2024/08/01	2025/07/31
EMI Test Receiver	R&S	ESCI	CTA-306	2024/08/01	2025/07/31
Spectrum Analyzer	Agilent	N9020A	CTA-301	2024/08/01	2025/07/31
Spectrum Analyzer	R&S	FSP	CTA-337	2024/08/01	2025/07/31
Vector Signal generator	Agilent	N5182A	CTA-305	2024/08/01	2025/07/31
Analog Signal Generator	R&S	SML03	CTA-304	2024/08/01	2025/07/31
Universal Radio Communication	CMW500	R&S	CTA-302	2024/08/01	2025/07/31
Temperature and humidity meter	Chigo	ZG-7020	CTA-326	2024/08/01	2025/07/31
Ultra-Broadband Antenna	Schwarzbeck	VULB9163	CTA-310	2023/10/17	2024/10/16
Horn Antenna	Schwarzbeck	BBHA 9120D	CTA-309	2023/10/13	2024/10/12
Loop Antenna	Zhinan	ZN30900C	CTA-311	2023/10/17	2024/10/16
Horn Antenna	Beijing Hangwei Dayang	OBH100400	CTA-336	2024/08/06	2027/08/05
Antenna Tower	Suzhou Keletuo electronic Technology Co., LTD	BK-*AT-BS	N/A	N/A	N/A
Amplifier	Schwarzbeck	BBV 9745	CTA-312	2024/08/01	2025/07/31
Amplifier	Taiwan chengyi	EMC051845B	CTA-313	2024/08/01	2025/07/31
Directional coupler	NARDA	4226-10	CTA-303	2024/08/01	2025/07/31
High-Pass Filter	XingBo	XBLBQ-GTA18	CTA-402	2024/08/01	2025/07/31
High-Pass Filter	XingBo	XBLBQ-GTA27	CTA-403	2024/08/01	2025/07/31
Automated filter bank	Tonscend	JS0806-F	CTA-404	2024/08/01	2025/07/31
Power Sensor	Agilent	U2021XA	CTA-405	2024/08/01	2025/07/31
Amplifier	Schwarzbeck	BBV9719	CTA-406	2024/08/01	2025/07/31

The calibration interval is 1 year.

4. TEST CONDITIONS AND RESULTS

4.1. AC Power Conducted Emission

TEST CONFIGURATION



TEST PROCEDURE

- 1, The equipment was set up as per the test configuration to simulate typical actual usage per the user's manual. The EUT is a tabletop system, a wooden table with a height of 0.8 meters is used and is placed on the ground plane as per ANSI C63.10.
- 2, Support equipment, if needed, was placed as per ANSI C63.10.
- 3, All I/O cables were positioned to simulate typical actual usage as per ANSI C63.10.
- 4, The EUT received DC 12V power, the adapter received AC120V/60Hz or AC 240V/50Hz power through a Line Impedance Stabilization Network (LISN) which supplied power source and was grounded to the ground plane.
- 5, All support equipments received AC power from a second LISN, if any.
- 6, The EUT test program was started. Emissions were measured on each current carrying line of the EUT using a spectrum Analyzer / Receiver connected to the LISN powering the EUT. The LISN has two monitoring points: Line 1 (Hot Side) and Line 2 (Neutral Side). Two scans were taken: one with Line 1 connected to Analyzer / Receiver and Line 2 connected to a 50 ohm load; the second scan had Line 1 connected to a 50 ohm load and Line 2 connected to the Analyzer / Receiver.
- 7, Analyzer / Receiver scanned from 150 KHz to 30MHz for emissions in each of the test modes.

AC Power Conducted Emission Limit

For intentional device, according to § 15.207(a) AC Power Conducted Emission Limits is as following :

Frequency range (MHz)	Limit (dBuV)	
	Quasi-peak	Average
0.15-0.5	66 to 56*	56 to 46*
0.5-5	56	46
5-30	60	50

* Decreases with the logarithm of the frequency.

DISTURBANCE Calculation

The AC mains conducted disturbance is calculated by adding the 10dB Pulse Limiter and Cable Factor and Duty Cycle Correction Factor (if any) from the measured reading. The basic equation with a sample calculation is as follows:

$$CD \text{ (dBuV)} = RA \text{ (dBuV)} + PL \text{ (dB)} + CL \text{ (dB)}$$

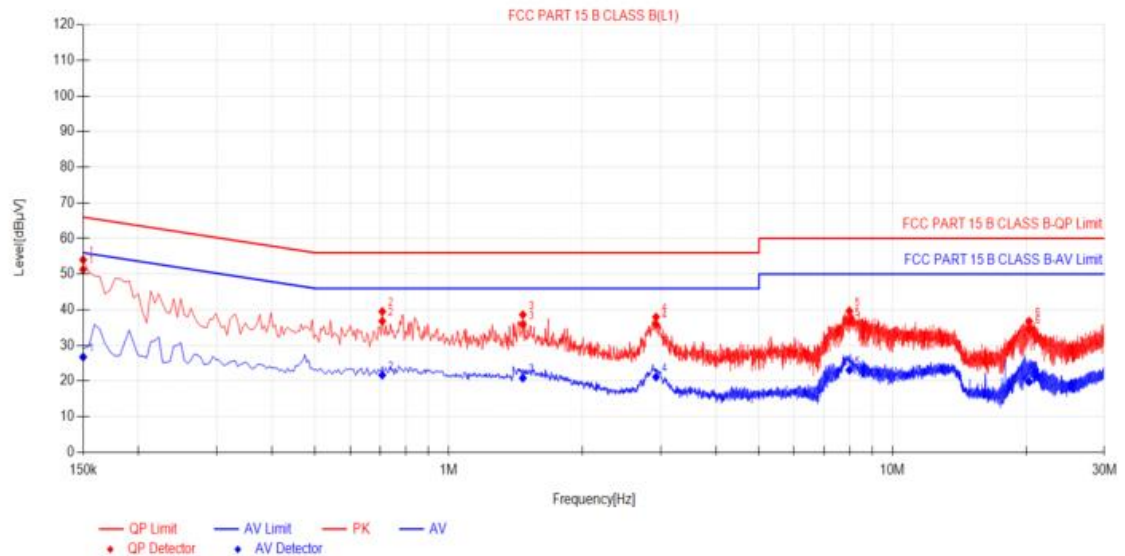
Where CD = Conducted Disturbance	CL = Cable Attenuation Factor (Cable Loss)
RA = Reading Amplitude	PL = 10 dB Pulse Limiter Factor

TEST RESULTS

1. Both 120 VAC, 60 Hz and 240 VAC, 50 Hz power supply have been tested, only the worst result of 120 VAC, 60 Hz was reported as below:

Temperature	25°C	Humidity	60%
Test Engineer	Lushan Kong	Configurations	WPT

Power supply:	AC 120V/60Hz	Polarization	L
---------------	--------------	--------------	---

Test Graph**Final Data List**

NO.	Freq. [MHz]	Factor [dB]	QP Reading[dB μV]	QP Value [dBμV]	QP Limit [dBμV]	QP Margin [dB]	AV Reading [dBμV]	AV Value [dBμV]	AV Limit [dBμV]	AV Margin [dB]	Verdict
1	0.15	9.87	41.44	51.31	66.00	14.69	16.88	26.75	56.00	29.25	PASS
2	0.708	9.91	26.90	36.81	56.00	19.19	11.76	21.67	46.00	24.33	PASS
3	1.4685	9.90	26.00	35.90	56.00	20.10	10.93	20.83	46.00	25.17	PASS
4	2.931	10.03	25.91	35.94	56.00	20.06	11.11	21.14	46.00	24.86	PASS
5	7.9935	10.28	26.45	36.73	60.00	23.27	12.79	23.07	50.00	26.93	PASS
6	20.31	10.43	24.01	34.44	60.00	25.56	9.34	19.77	50.00	30.23	PASS

Note:1). QP Value (dBμV) = QP Reading (dBμV) + Factor (dB)

2). Factor (dB) = insertion loss of LISN (dB) + Cable loss (dB)

3). QPMargin(dB) = QP Limit (dBμV) - QP Value (dBμV)

4). AVMargin(dB) = AV Limit (dBμV) - AV Value (dBμV)

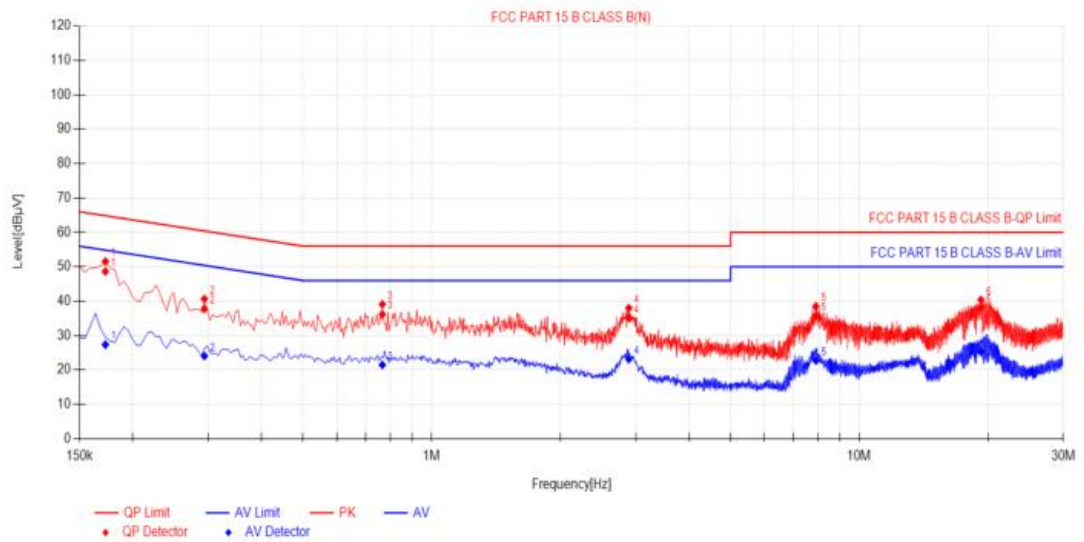
Power supply:

AC 120V/60Hz

Polarization

N

Test Graph



Final Data List

NO.	Freq. [MHz]	Factor [dB]	QP Reading[dB μV]	QP Value [dBμV]	QP Limit [dBμV]	QP Margin [dB]	AV Reading [dBμV]	AV Value [dBμV]	AV Limit [dBμV]	AV Margin [dB]	Verdict
1	0.1725	10.07	38.57	48.64	64.84	16.20	17.29	27.36	54.84	27.48	PASS
2	0.294	9.88	27.86	37.74	60.41	22.67	14.17	24.05	50.41	26.36	PASS
3	0.7665	10.11	26.09	36.20	56.00	19.80	11.37	21.48	46.00	24.52	PASS
4	2.8905	10.22	24.88	35.10	56.00	20.90	12.92	23.14	46.00	22.86	PASS
5	7.917	10.42	25.30	35.72	60.00	24.28	12.30	22.72	50.00	27.28	PASS
6	19.257	10.55	27.61	38.16	60.00	21.84	14.72	25.27	50.00	24.73	PASS

Note:1).QP Value (dBμV)= QP Reading (dBμV)+ Factor (dB)

2). Factor (dB)=insertion loss of LISN (dB) + Cable loss (dB)

3). QPMargin(dB) = QP Limit (dBμV) - QP Value (dBμV)

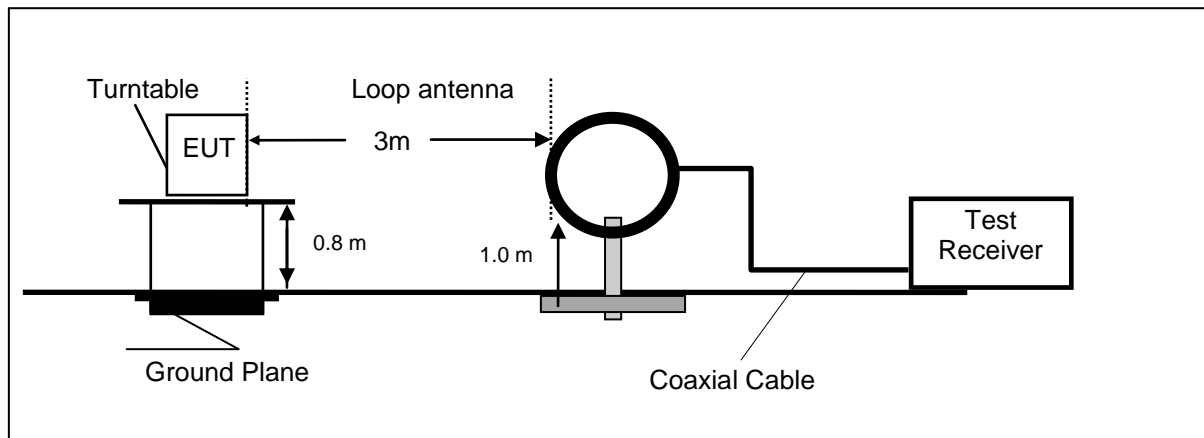
4). AVMargin(dB) = AV Limit (dBμV) - AV Value (dBμV)

Note: All the modes have been tested and recorded worst mode in the report.

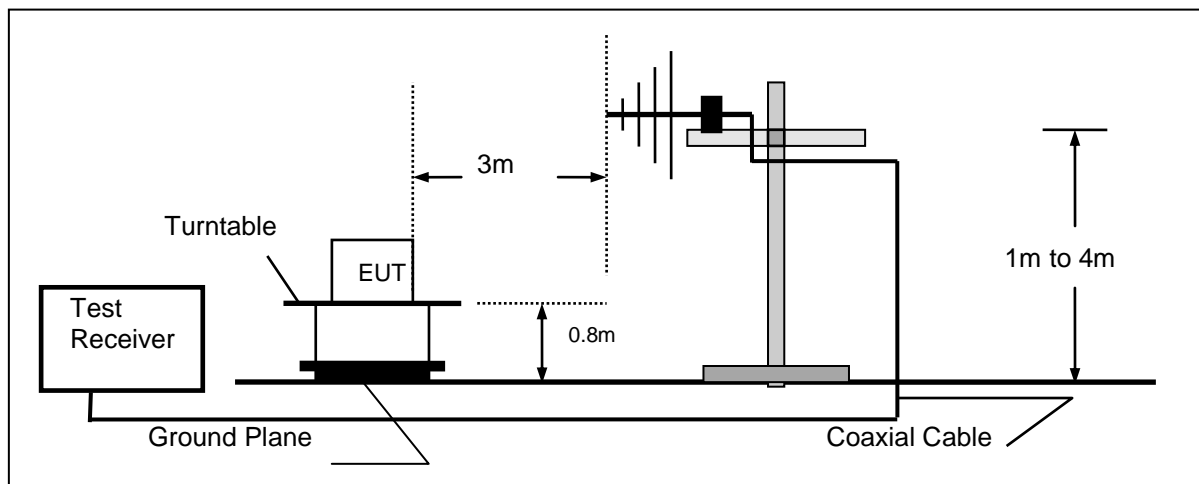
4.2. Radiated Emission

TEST CONFIGURATION

Frequency range 9 KHz – 30MHz



Frequency range 30MHz – 1000MHz



Frequency range above 1GHz-25GHz



TEST PROCEDURE

- 1.The EUT was placed on a turn table which is 12mm above ground plane when testing frequency range 9 KHz –25GHz.
- 2.Maximum procedure was performed by raising the receiving antenna from 1m to 4m and rotating the turn table from 0° to 360° to acquire the highest emissions from EUT.
- 3.And also, each emission was to be maximized by changing the polarization of receiving antenna both horizontal and vertical.
- 4.Repeat above procedures until all frequency measurements have been completed.
- 5.The EUT minimum operation frequency was 32.768KHz and maximum operation frequency was 205KHz.so radiated emission test frequency band from 9KHz to 1GHz.
- 6.The distance between test antenna and EUT as following table states:

Test Frequency range	Test Antenna Type	Test Distance
9KHz-30MHz	Active Loop Antenna	3
30MHz-1GHz	Ultra-Broadband Antenna	3
1GHz-18GHz	Double Ridged Horn Antenna	3
18GHz-25GHz	Horn Antenna	1

- 7.Setting test receiver/spectrum as following table states:

Test Frequency range	Test Receiver/Spectrum Setting	Detector
9KHz-150KHz	RBW=200Hz/VBW=3KHz,Sweep time=Auto	QP
150KHz-30MHz	RBW=9KHz/VBW=100KHz,Sweep time=Auto	QP
30MHz-1GHz	RBW=120KHz/VBW=1000KHz,Sweep time=Auto	QP
1GHz-40GHz	Peak Value: RBW=1MHz/VBW=3MHz, Sweep time=Auto Average Value: RBW=1MHz/VBW=10Hz, Sweep time=Auto	Peak

Field Strength Calculation

The field strength is calculated by adding the Antenna Factor and Cable Factor and subtracting the Amplifier Gain and Duty Cycle Correction Factor(if any) from the measured reading. The basic equation with a sample calculation is as follows:

$$FS = RA + AF + CL - AG$$

Where FS = Field Strength	CL = Cable Attenuation Factor (Cable Loss)
RA = Reading Amplitude	AG = Amplifier Gain
AF = Antenna Factor	

$$\text{Transd}=AF +CL-AG$$

RADIATION LIMIT

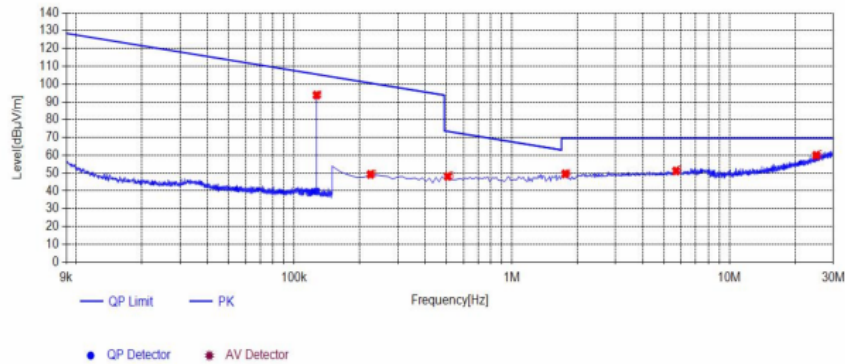
For intentional device, according to § 15.209(a), the general requirement of field strength of radiated emission from intentional radiators at a distance of 3 meters shall not exceed the following table. According to § 15.247(d), in any 100kHz bandwidth outside the frequency band in which the EUT is operating, the radio frequency power that is produced by the intentional radiator shall be at least 20dB below that in the 100kHz bandwidth within the band that contains the highest level of desired power.

The pre-test have done for the EUT in three axes and found the worst emission at position shown in test setup photos.

Frequency (MHz)	Distance (Meters)	Radiated (dBµV/m)	Radiated (µV/m)
0.009-0.49	3	$20\log(2400/F(\text{KHz}))+40\log(300/3)$	$2400/F(\text{KHz})$
0.49-1.705	3	$20\log(24000/F(\text{KHz}))+ 40\log(30/3)$	$24000/F(\text{KHz})$
1.705-30	3	$20\log(30)+ 40\log(30/3)$	30
30-88	3	40.0	100
88-216	3	43.5	150
216-960	3	46.0	200
Above 960	3	54.0	500

TEST RESULTS

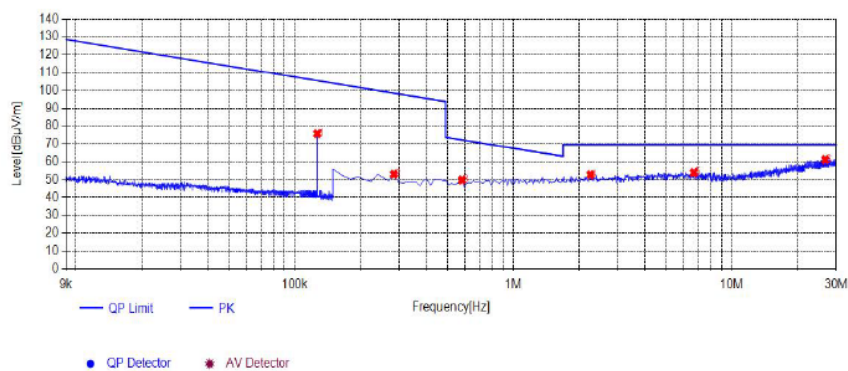
Temperature	25°C	Humidity	58%
Test Engineer	Lushan Kong	Configurations	WPT

For 9 KHz-30MHz**Coplanar****Test Graph****Suspected List**

NO.	Frequency [MHz]	Reading [dBμV/m]	Factor [dB]	Result [dBμV/m]	Limit [dBμV/m]	Margin [dB]	Height [cm]	Angle [°]	Detector	Polarity	Remark
1	0.127	93.48	0.34	93.82	105.53	11.71	100	249	PK	Coplanar	PASS
2	0.2246	48.86	0.42	49.28	100.57	51.29	100	242	PK	Coplanar	PASS
3	0.5082	47.55	0.60	48.15	73.48	25.33	100	270	PK	Coplanar	PASS
4	1.7619	48.26	1.34	49.60	69.54	19.94	100	214	PK	Coplanar	PASS
5	5.6872	47.57	3.66	51.23	69.54	18.31	100	293	PK	Coplanar	PASS
6	25.03	45.24	14.79	60.03	69.54	9.51	100	142	PK	Coplanar	PASS

Note:1. Result (dBμV/m) = Reading(dBμV/m) + Factor (dB) .

2. Factor (dB) = Antenna Factor (dB/m) + Cable loss (dB) - Pre Amplifier gain (dB).

Coaxial**Test Graph****Suspected List**

NO.	Frequency [MHz]	Reading [dBμV/m]	Factor [dB]	Result [dBμV/m]	Limit [dBμV/m]	Margin [dB]	Height [cm]	Angle [°]	Detector	Polarity	Remark
1	0.127	75.46	0.34	75.80	105.53	29.73	100	260	PK	Coaxial	PASS
2	0.2843	52.62	0.46	53.08	98.53	45.45	100	209	PK	Coaxial	PASS
3	0.5828	49.24	0.64	49.88	72.29	22.41	100	142	PK	Coaxial	PASS
4	2.2544	51.19	1.63	52.82	69.54	16.72	100	279	PK	Coaxial	PASS
5	6.7021	49.75	4.24	53.99	69.54	15.55	100	178	PK	Coaxial	PASS
6	26.7613	45.35	15.79	61.14	69.54	8.40	100	346	PK	Coaxial	PASS

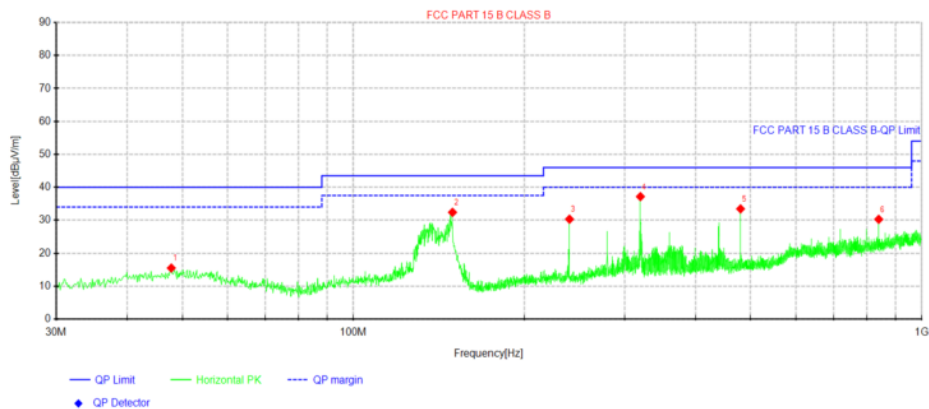
Note:1. Result (dBμV/m) = Reading(dBμV/m) + Factor (dB) .

2. Factor (dB) = Antenna Factor (dB/m) + Cable loss (dB) - Pre Amplifier gain (dB).

For 30MHz-1GHz

Horizontal

Test Graph



Suspected Data List

NO.	Freq. [MHz]	Reading [dBµV]	Level [dBµV/m]	Factor [dB/m]	Limit [dBµV/m]	Margin [dB]	Height [cm]	Angle [°]	Polarity
1	47.8237	27.07	15.51	-11.56	40.00	24.49	100	266	Horizontal
2	149.431	48.36	32.41	-15.95	43.50	11.09	100	360	Horizontal
3	240.005	43.21	30.33	-12.88	46.00	15.67	100	197	Horizontal
4	319.908	48.56	37.19	-11.37	46.00	8.81	100	289	Horizontal
5	479.958	43.02	33.46	-9.56	46.00	12.54	100	69	Horizontal
6	840.071	34.07	30.30	-3.77	46.00	15.70	100	360	Horizontal

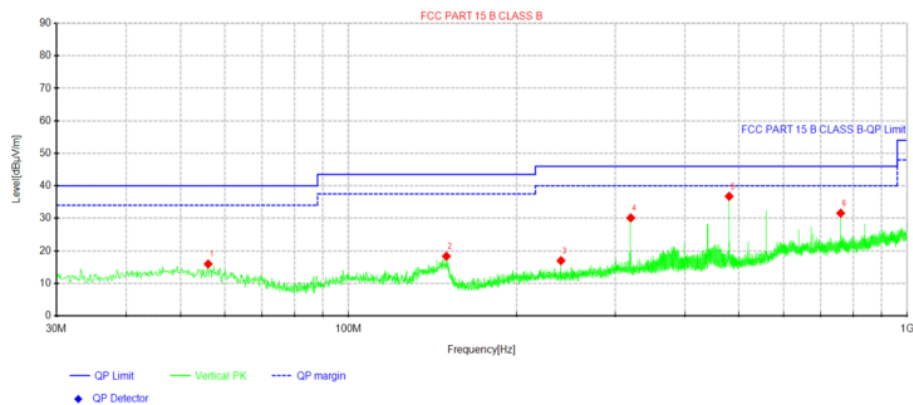
Note:1).Level (dBµV/m)= Reading (dBµV)+ Factor (dB/m)

2). Factor(dB/m)=Antenna Factor (dB/m) + Cable loss (dB) - Pre Amplifier gain (dB)

3). Margin(dB) = Limit (dBµV/m) - Level (dBµV/m)

Vertical

Test Graph



Suspected Data List

NO.	Freq. [MHz]	Reading [dBµV]	Level [dBµV/m]	Factor [dB/m]	Limit [dBµV/m]	Margin [dB]	Height [cm]	Angle [°]	Polarity
1	56.0688	28.16	15.95	-12.21	40.00	24.05	100	304	Vertical
2	149.673	34.29	18.34	-15.95	43.50	25.16	100	165	Vertical
3	240.005	29.87	16.99	-12.88	46.00	29.01	100	8	Vertical
4	320.03	41.53	30.16	-11.37	46.00	15.84	100	119	Vertical
5	479.958	46.34	36.78	-9.56	46.00	9.22	100	350	Vertical
6	760.046	36.29	31.59	-4.70	46.00	14.41	100	2	Vertical

Note:1).Level (dBµV/m)= Reading (dBµV)+ Factor (dB/m)

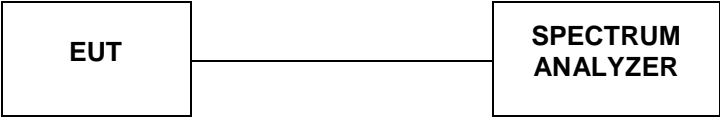
2). Factor(dB/m)=Antenna Factor (dB/m) + Cable loss (dB) - Pre Amplifier gain (dB)

3). Margin(dB) = Limit (dBµV/m) - Level (dBµV/m)

Note: All the modes have been tested and recorded worst mode in the report.

4.3. Occupied Bandwidth

TEST CONFIGURATION



TEST PROCEDURE

Intentional radiators operating under the alternative provisions to the general emission limits, as contained in §§15.217 through 15.257 and in subpart E of this part, must be designed to ensure that 20dB bandwidth of the emission, or whatever bandwidth may otherwise be specified in the specific rule section under which the equip compliance with the 20dB attenuation specification may base on measurement at the intentional radiator's antenna output terminal unless the intentional radiator uses a permanently attached antenna, in which case compliance shall be demonstrated by measuring the radiated emissions.

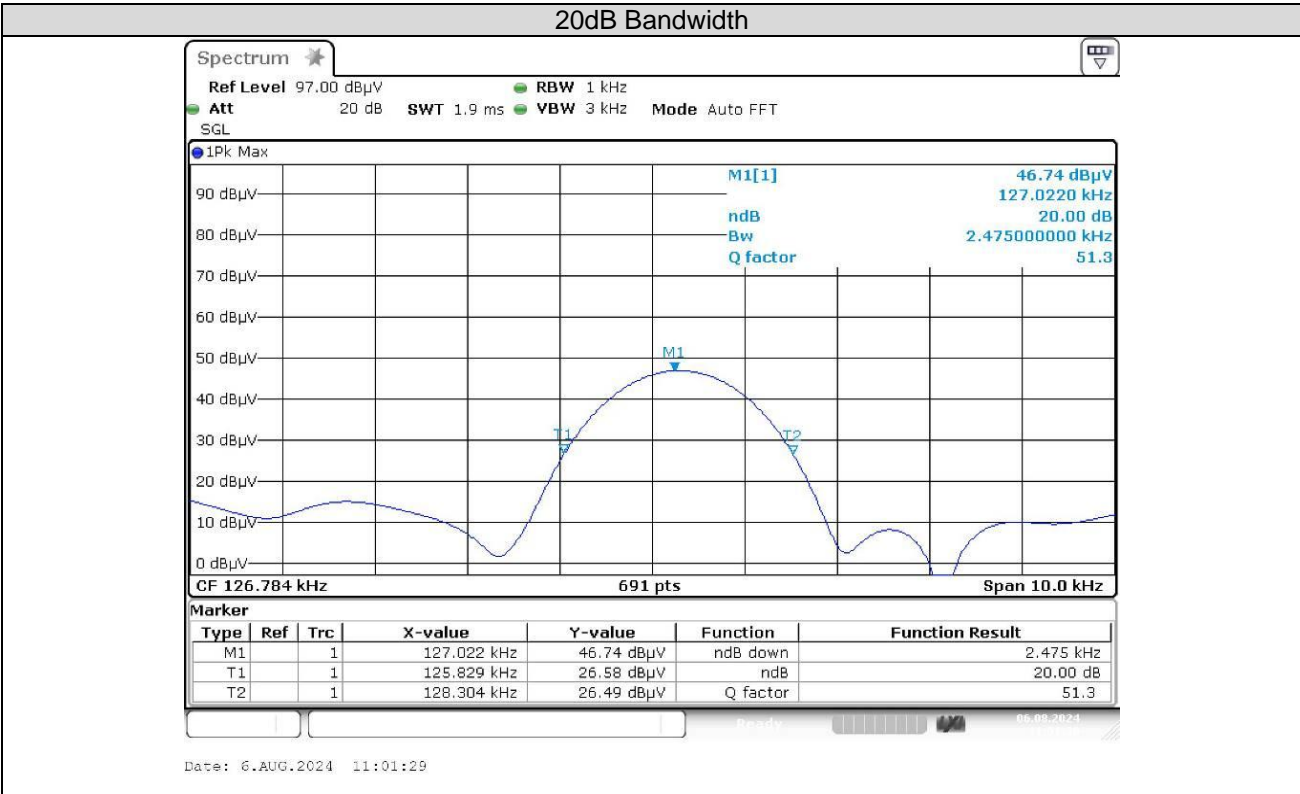
LIMIT

/

TEST RESULTS

Temperature	24.5℃	Humidity	53.9%
Test Engineer	Lushan Kong	Configurations	WPT

Mode	Freq (KHz)	20dB Bandwidth (KHz)	Limit (kHz)	Conclusion
Tx Mode	126.78	2.475	/	PASS



4.4. Antenna Requirement

Standard Applicable

Standard Applicable

For intentional device, according to FCC 47 CFR Section 15.203, an intentional radiator shall be designed to ensure that no antenna other than that furnished by the responsible party shall be used with the device.

Antenna Information

The antenna used in this product is a Coil Antenna, The directional gains of antenna used for transmitting is 0dBi.

Reference to the **Internal photos**.

5. Test Setup Photos of the EUT

Photo of Radiated Emissions Measurement



Fig. 1

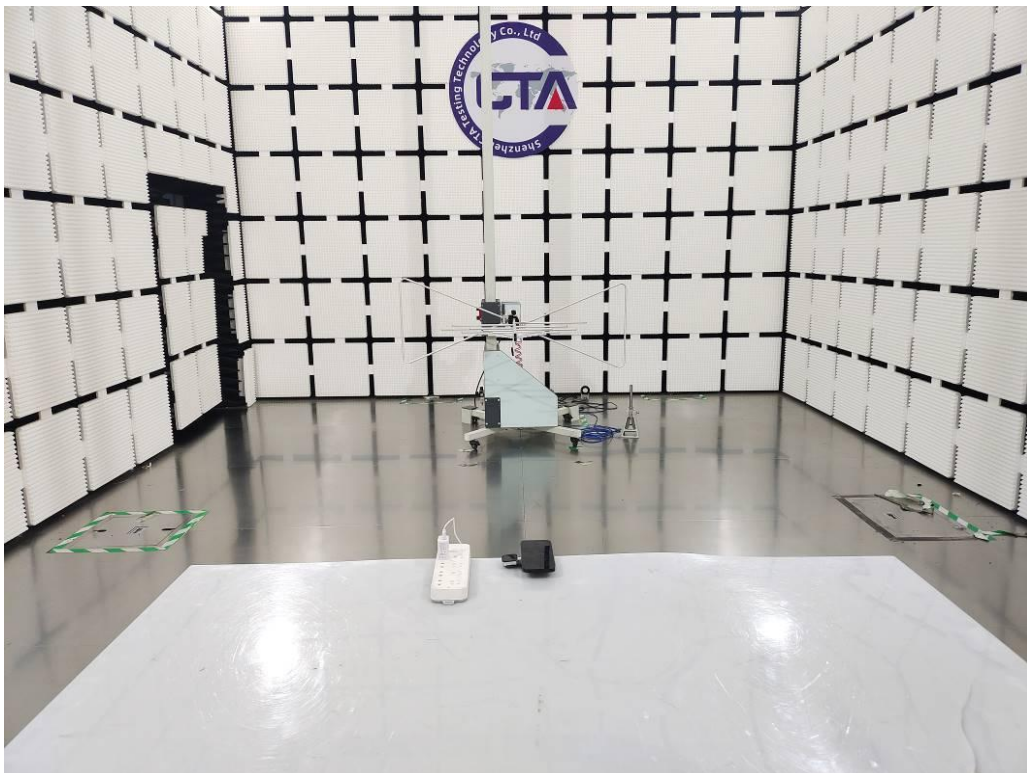


Fig. 2

Photo of Conducted Emissions Measurement



Fig. 3

6. External and Internal Photos of the EUT



Fig. 1



Fig. 2



Fig. 3



Fig. 4



Fig. 5



Fig. 6



Fig. 7

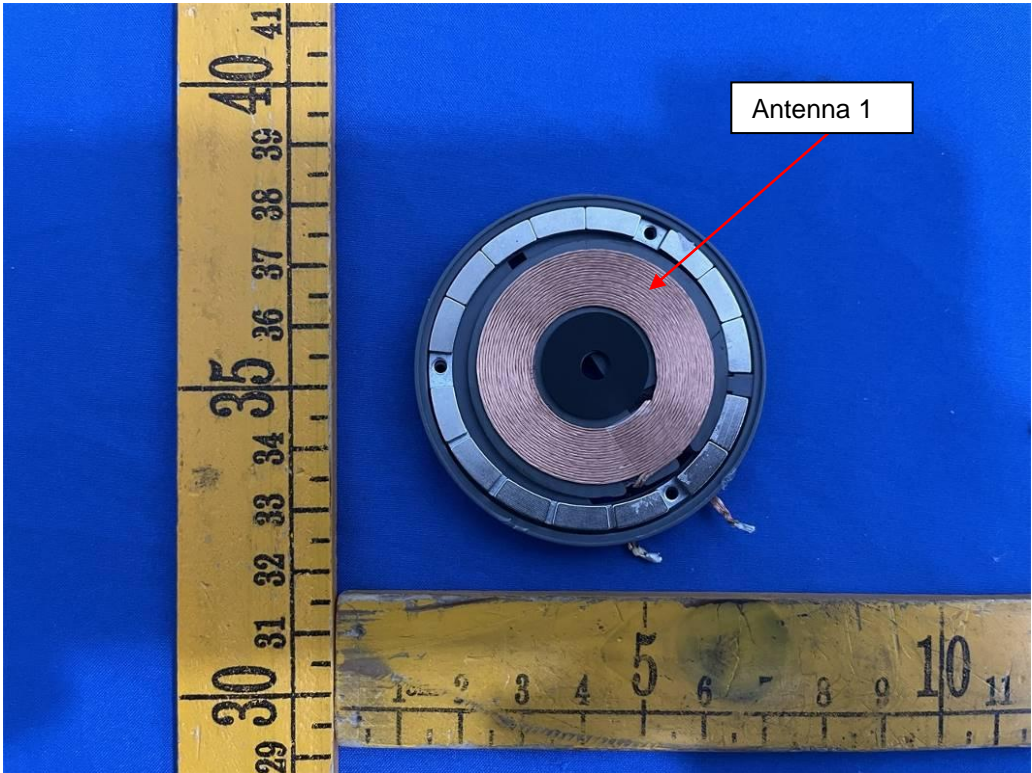


Fig. 8



Fig. 9

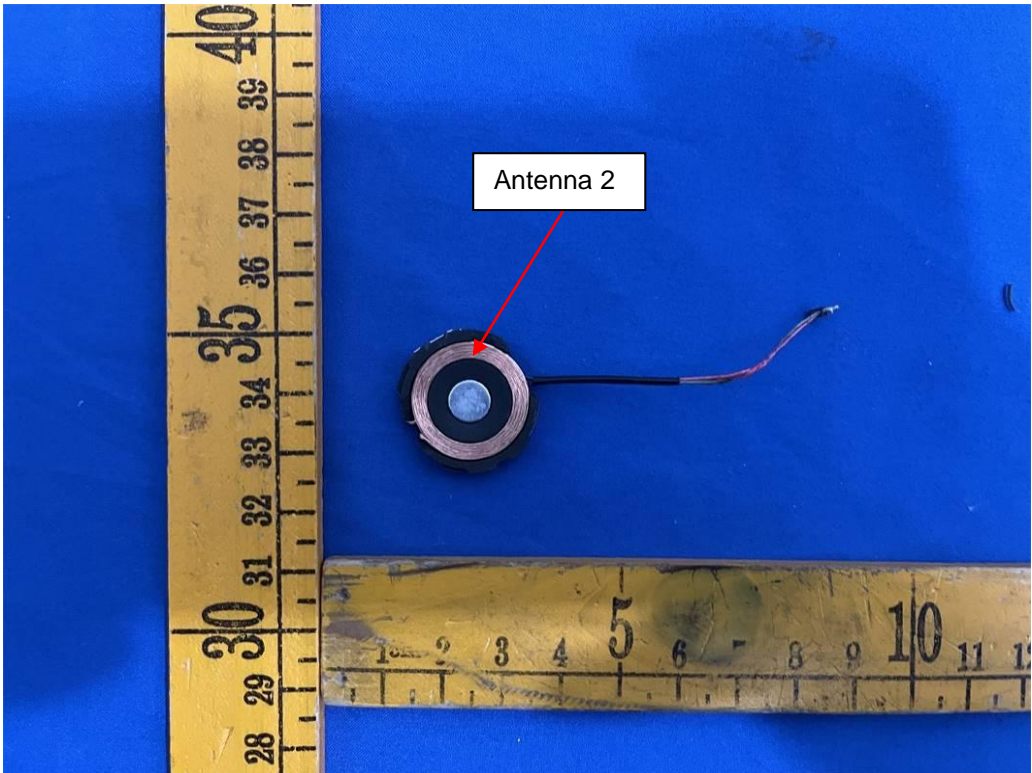


Fig. 10



Fig. 11

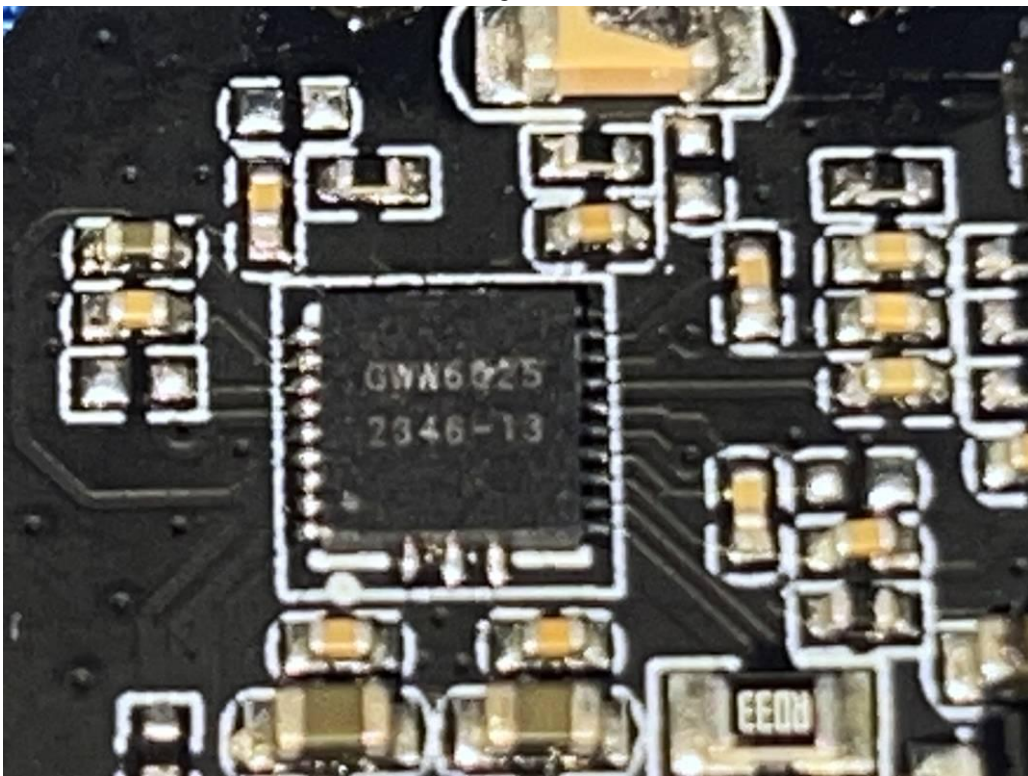


Fig. 12

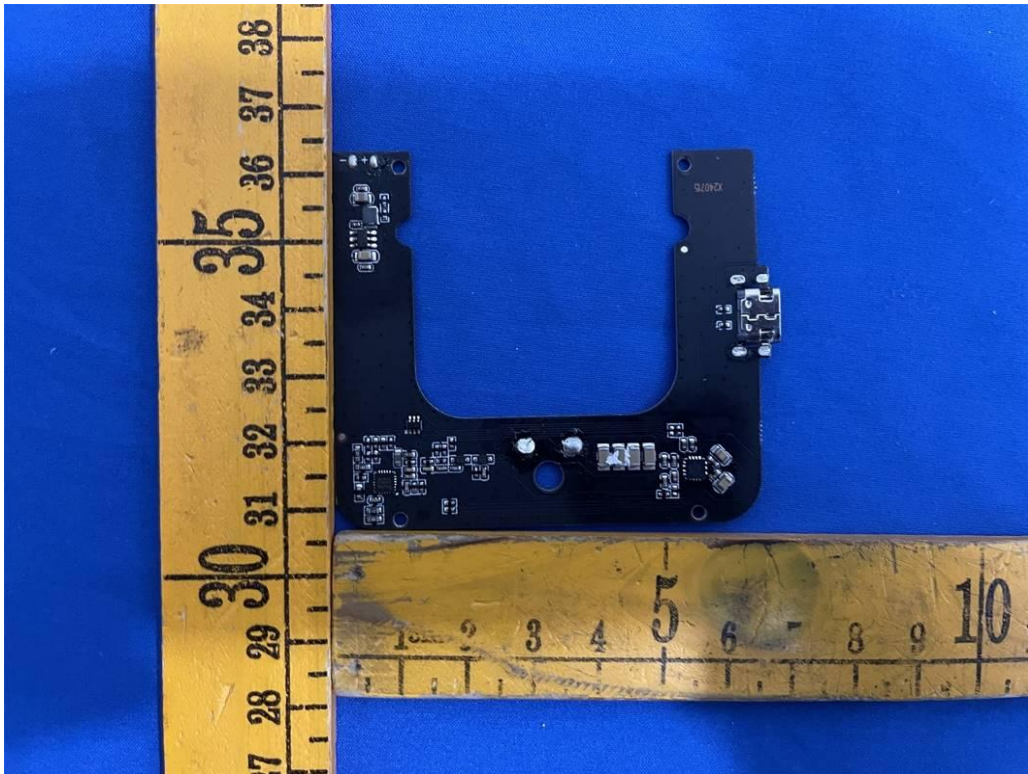


Fig. 13

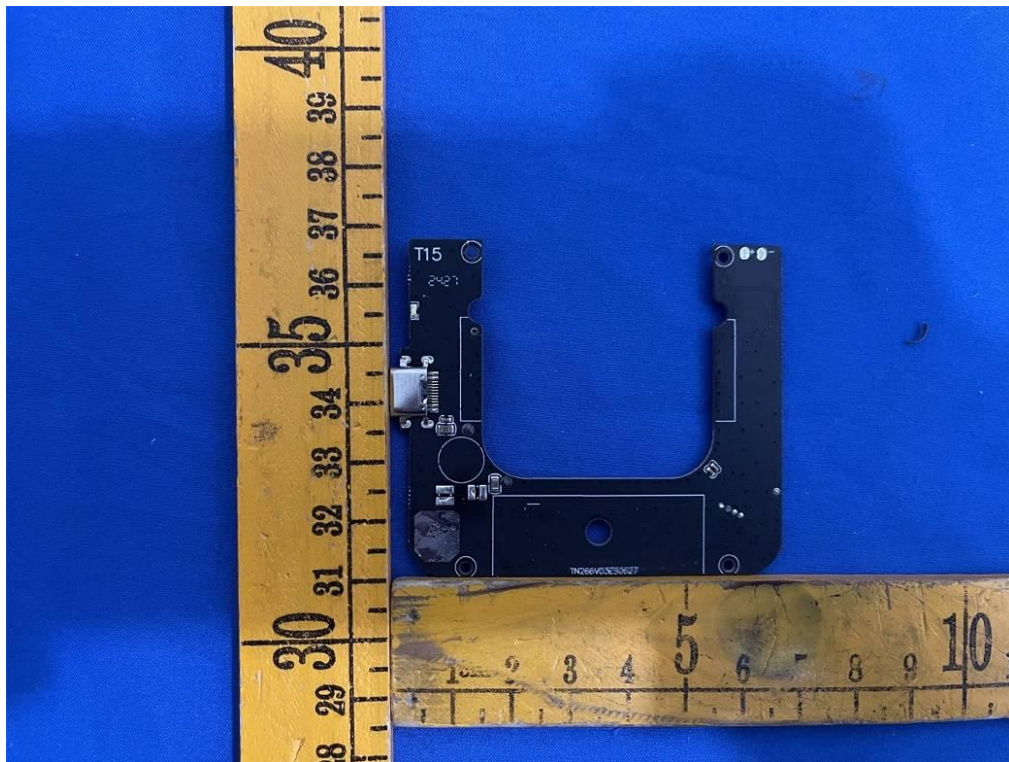


Fig. 14

.....End of Report.....