

iFORCE W4

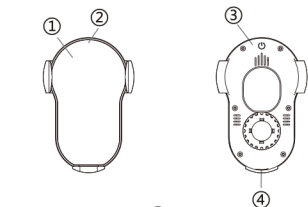
Smart Wireless Charging Car Mount

User Manual

Product description

Thank you for purchasing our products. This product is a smart wireless charger car phone holder that allows you to easily experience the wireless fun of smart digital products. Please read this manual carefully before using this product and keep it for your future reference.

Product details picture

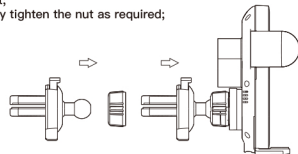


1. Wireless charging sensing center ares
2. Work indicator light
3. Touch button
4. Type-c interface
5. Air conditioning clip
6. Air clip fixed switch
7. Multi-angle rotating ball
8. Multi-angle rotating ball fixing nut

Installation steps:

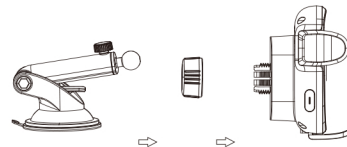
Assembling the Air Vent Clip

1. First, Put the nut on the air vent swivel ball;
2. Press the universal rotating ball head and nut into the support;
3. Finally tighten the nut as required;



Assembling the Suction Cup

1. First assemble the fixing nut on the rotating ball of the suction cup to finish the suction cup part.
2. Assemble the suction cup part on the back of the phone holder.
3. Then twist the fixing nut to tighten it as needed.



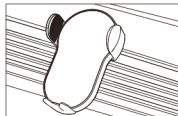
Specifications

Input: 5V; 9V; 12V/2A(MAX)
Power: 5W, 7.5W, 10W, 15W
Receiving distance: < 6mm
Size: 100*67*54mm
Weight: ≈ 116g (including clips ≈ 130g)

Installation Steps

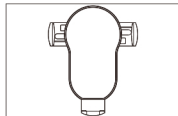
Air Outlet clip Assembly Method

1. Press the clip switch, insert the air outlet clip into the bottom blade of the air conditioner outlet
2. Adjust the appropriate angle and insert the Type-c data cable into the wireless charger Type-c interface. The left and right arms will open automatically.



Automatic touch arm, No manual break

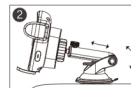
3. Put the phone on the wireless charger, after the coil is sensed, the left and right arms automatically close and lock the phone.
4. When you need to take the handset, touch the touch button on the top of the vehicle bracket with any finger, and the left and right clamping arms will open automatically.



Cell Phone Holder With the Suction Cup



Place the suction cup on the gasket, and press the suction cup to make it fix firmly



Adjust the viewing angle adjustable knob and length-adjustable bar to make it the best viewing angle and length.



Insert the Type-C cable into the charging port and it is ready to work.

Precautions

- Keep out of reach of children.
- Do not use in damp environment.
- Please do not dismantle the product without permission.
- Avoid to use the way in whack, bump, impact.
- Do not repair this product if you are not a professional.
- This product is a motor gear engagement product, please do not use external force to move the left and right clamping arms.
- Please use the QC2.0/QC3.0 adapter to charging the product.
- The product with button cell, after charging the product for five minutes, the clip arm can be opened by touching the button even if the charging stops.
- The back of the phone cannot be equipped with ring holder (socket), and other items beyond the range of the phone's wireless charging reception. Otherwise, the charging power will be affected.

FCC Requirement

Any changes or modifications not expressly approved by the party responsible for compliance could void the user's authority to operate the equipment.

This device complies with Part 15 of the FCC Rules. Operation is subject to the following two conditions:

- (1) this device may not cause harmful interference, and
- (2) this device must accept any interference received, including interference that may cause undesired operation.

Note: This equipment has been tested and found to comply with the limits for a Class B digital device, pursuant to Part 15 of the FCC Rules. These limits are designed to provide reasonable protection against harmful interference in a residential installation. This equipment generates, uses, and can radiate radio frequency energy, and if not installed and used in accordance with the instructions, may cause harmful interference to radio communications. However, there is no guarantee that interference will not occur in a particular installation. If this equipment does cause harmful interference to radio or television reception, which can be determined by turning the equipment off and on, the user is encouraged to try to correct the interference by one or more of the following measures:

- Reorient or relocate the receiving antenna.
- Increase the separation between the equipment and receiver.
- Connect the equipment into an outlet on a circuit different from that to which the receiver is connected.
- Consult the dealer or an experienced radio/TV technician for