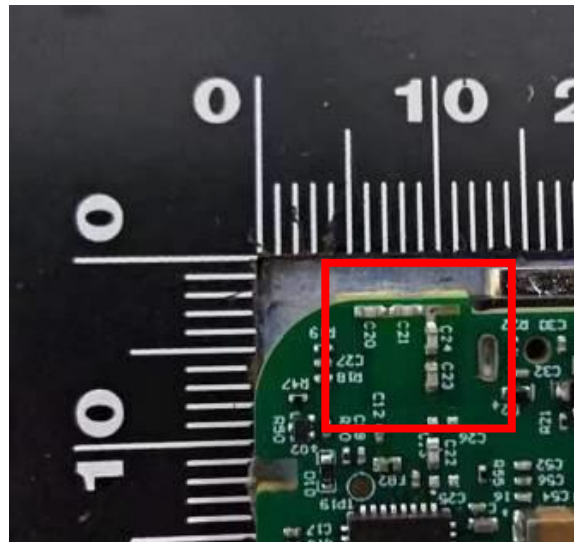
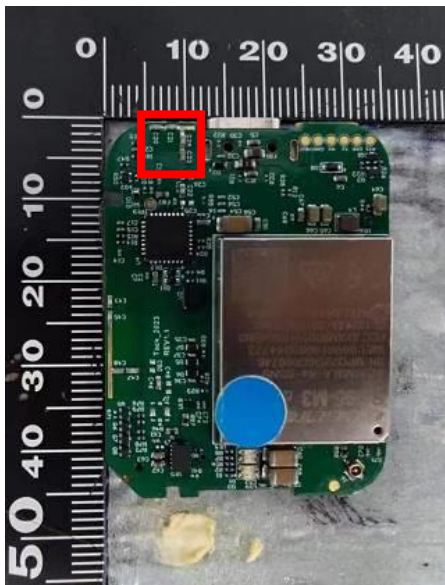


1. Description

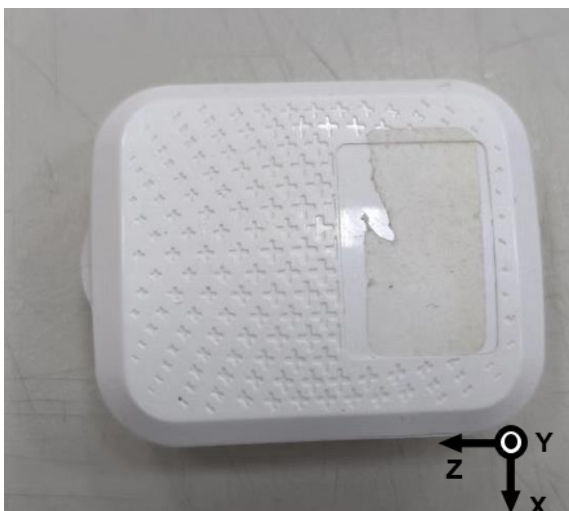
1.1 Specifications

Antennas Type	PIFA
Connector Type	N/A
Cable Type	N/A
Impedance	50Ω
Cable length	N/A
Polarization	Linear
Radiation pattern	Omni-directional
Frequency	2400~2500 MHz

1.2 Antenna Picture



1.3 Device Picture



2.2.3 Radiation pattern and Gain

- A. The 3D chamber provides less than -40dB reflectivity from 500MHz to 7.5GHz and a 40cm diameter spherical quiet zone. The measurement results are calibrated using both dipoles and standard gain horns (see figure. 2).
- B. The antenna under tested is arranged in the turned table and a decoupling sleeve is used to reduce feed line radiation (see figure. 3).

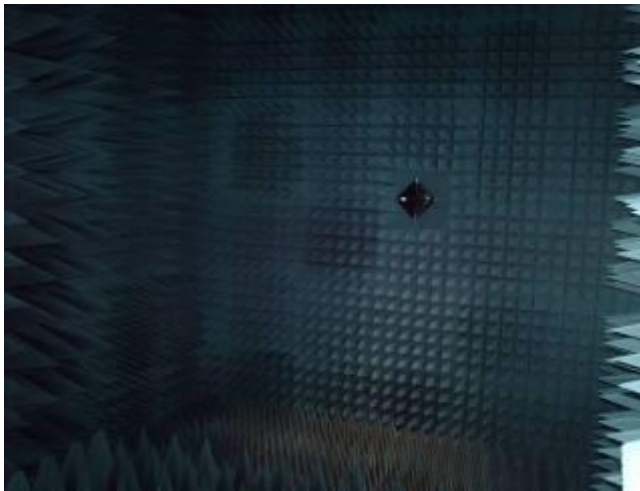


Figure. 2

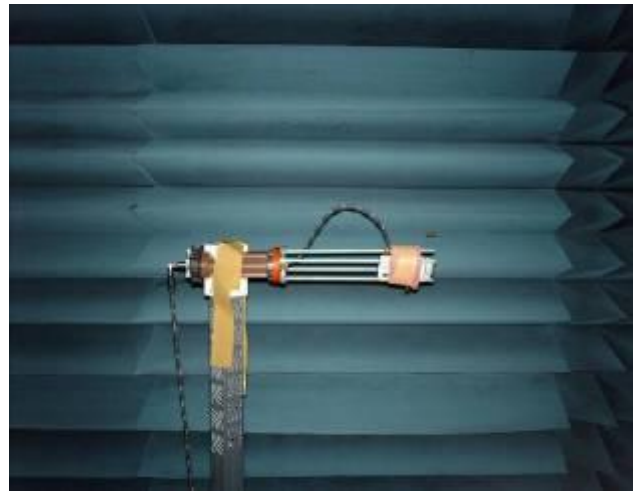


Figure. 3