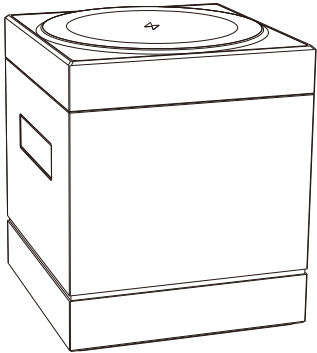
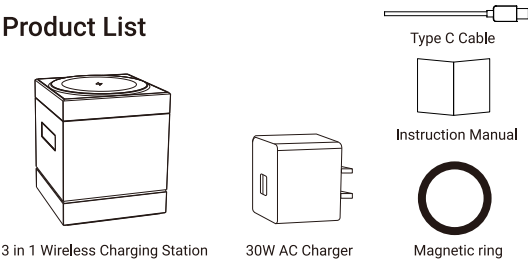


Instruction Manual

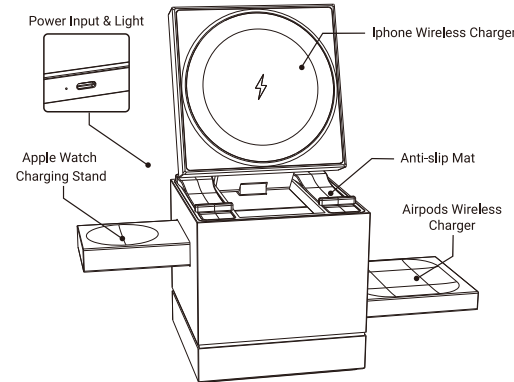


3 in 1 Wireless Charging Station  
YFW-F189

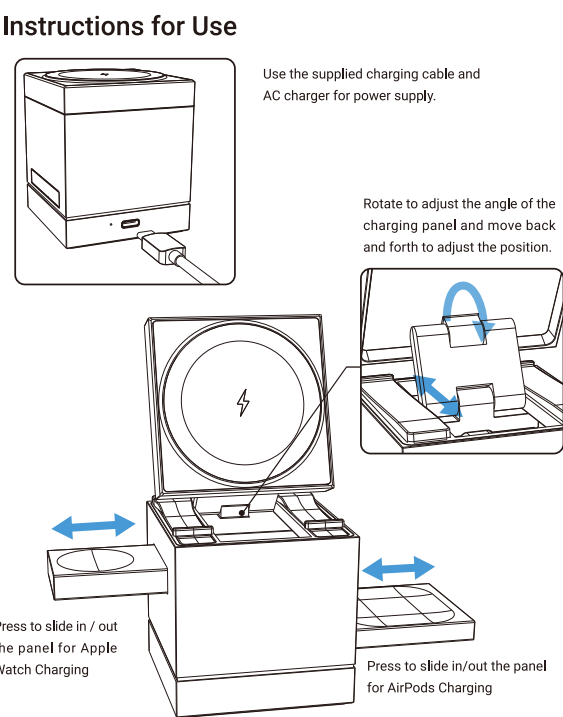
Product List



Product Introduction



Instructions for Use



Specifications

**Name:** 3 in 1 Wireless Charging Station  
**Model:** YFW-F189  
**Material:** Aluminium Alloy, ABS+PC  
**Input:** 5V/3A, 9V/3A(MAX)  
**Output(Phone):** 5W/7.5W/10W/15W  
**Output(Ear Buds):** 5W  
**Output(Watch ):** 5W  
**Power Interface:** Type-C  
(Use this product at ambient temperatures of 0-35°C.)

Notes

- This product works with devices compatible with the specified charging protocol.
- Do not use a power supply that exceeds the specified voltage and current to power this product.
- Do not place this product near a heat source or use it in a high-temperature and wet environment.
- If the power supply or components are faulty, do not dismantle and repair it by yourself, please contact the after-sales service for support.
- Keep out of the reach of children.
- Please dispose of this product according to local laws and regulations, and it cannot be disposed of as household waste.

Made in China  
UK CE FCC RoHS

**Note:** This equipment has been tested and found to comply with the limits for a Class B digital device, pursuant to part 15 of the FCC Rules. These limits are designed to provide reasonable protection against harmful interference in a residential installation. This equipment generates, uses and can radiate radio frequency energy and, if not installed and used in accordance with the instructions, may cause harmful interference to radio communications. However, there is no guarantee that interference will not occur in a particular installation. If this equipment does cause harmful interference to radio or television reception, which can be determined by turning the equipment off and on, the user is encouraged to try to correct the interference by one or more of the following measures:

- Reorient or relocate the receiving antenna.
- Increase the separation between the equipment and receiver.
- Connect the equipment into an outlet on a circuit different from that to which the receiver is connected.
- Consult the dealer or an experienced radio/TV technician for help.

**FCC RF exposure statement:**  
The equipment complies with FCC radiation exposure limits set forth for an uncontrolled environment. This equipment should be installed and operated with minimum distance between 20cm the radiator your body.

**Important:** Change or modifications not expressly approved by the manufacturer responsible for compliance could void the user's authority to operate the equipment.

**This device complies with part 15 of the FCC Rules. Operation is subject to the following two conditions:(1) This device may not cause harmful interference, and (2) this device must accept any interference received, including interference that may cause undesired operation.**