

TJ800 MINI SMART TV

SIMPLIFIED USER MANUAL

Please read the safety instructions in the enclosed user manual before usage.

SAFETY INSTRUCTIONS FOR TJ800 MINI SMART TV

1. Please DO read the safety instructions carefully.
2. Please DO keep this manual properly for future reference.
3. Please put this product on a stable and clean table before usage.
4. All the openings and slots on the product case are for ventilation and heat dissipation to avoid component damage due to over-heating, so do NOT cover or block these parts.
5. Do NOT place the power supply in places where it is easy to be trod on, do NOT put any item on the power lines.
6. Do NOT pour any kind of liquid into this product, otherwise it may suffer damage or circuitry burnout.
7. Do NOT place this product in the environment which temperature is above 65 °C or below 0°C, otherwise it may be damaged.
8. Please do NOT put this product in the environment with high humidity or dust.
9. Please contact professional personnel for further treatment if the following conditions happen:
 - a. Power supply source damage;
 - b. Liquid infiltration into product case;
 - c. No reaction or black screen after power-on.

CONTENTS

CHAPTER ONE BRIEF INTRODUCTION TO TJ800 TV

- 1.1 TV Front View1
- 1.2 TV Rear View2
- 1.3 TV Remote Control3
- 1.4 Power Supply4

CHAPTER TWO COMMON ISSUES

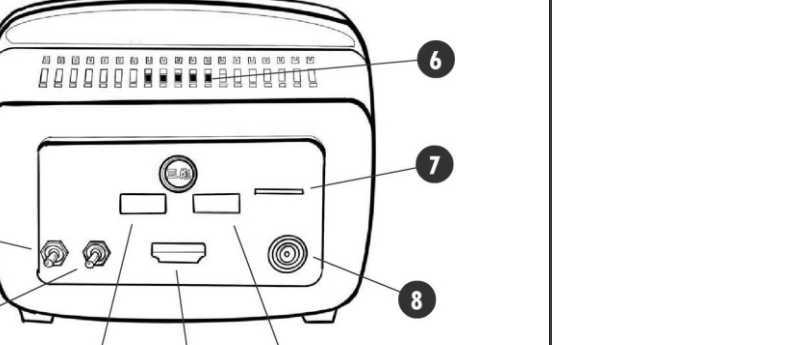
- 2.1 Start-up5
- 2.2 Outer Device6
- 2.3 Operating System Introduction7
- 2.4 Network Connection8
- 2.5 Wireless keyboard, mouse, game controller and other extension parts9

CHAPTER THREE WARRANTY AND AFTER-SALES COMMITMENT

- 3.1 TJ800 TV Warranty Commitment.....10
- 3.2 TJ 800 TV After-sales Commitment.....11
- 3.3 TJ800 TV Warranty Certificate and Qualification.11

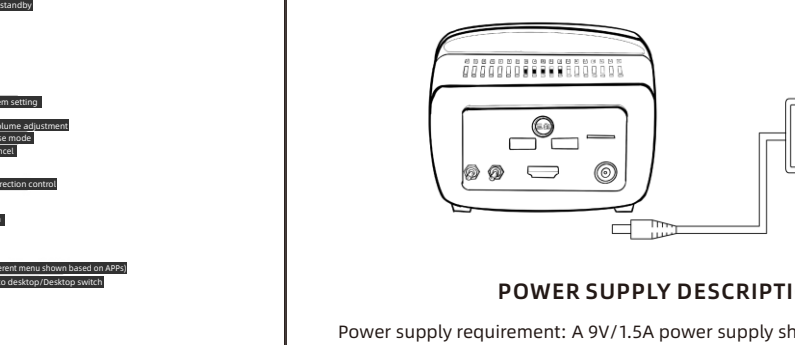
CHAPTER ONE BRIEF INTRODUCTION TO TJ800 TV

1.1 TV FRONT VIEW



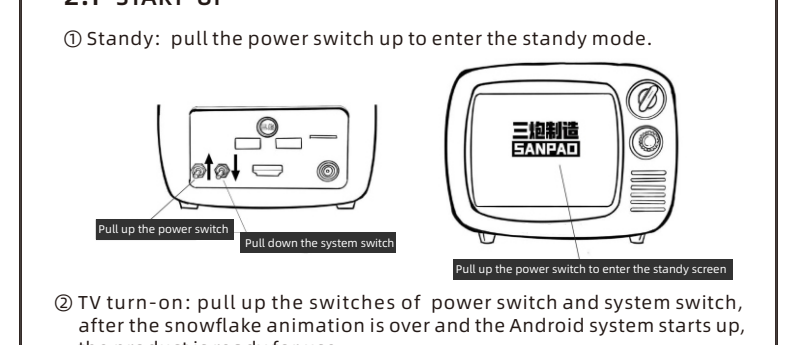
1.Color/Monochrome adjustment 2.Volume adjustment	
Product name	Mini Smart TV
Product model	TJ800
Outer dimensions	11.6X10.8X9.3
Weight	325g
Screen	3.5inch IPS HD LCD
Resolution ratio	640X480
System	Android 7.1.2
CPU	Amlogic s905w/4-core/2.0Hz
Speaker	4 03W
Memory	2G
Product memory	16G
WIFI	IEEE 802.11 b/g/n
USB	X2
HDMI input	X1
TF card	Supporting 128GB maximum
Power supply	DC6V/1.0A

1.2 TV REAR VIEW



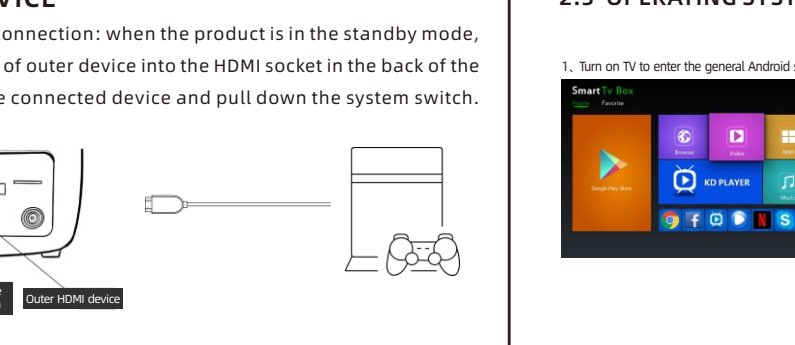
- 1、Power supply switch
- 2、System switch
- 3、USB—1
- 4、USB—2
- 5、HDMI signal input
- 6、Speaker
- 7、TF card slot
- 8、DC55X21 power socket

1.3 TV REMOTE CONTROL



- 1. System standby
- 2. System settings
- 3. Volume adjustment
- 4. Mute/Unmute
- 5. System Control
- 6. Direction control
- 7. Confirm
- 8. Menu/Different menu screen based on APPs
- 9. Return to desktop/Desktop switch

1.4 POWER SUPPLY



POWER SUPPLY DESCRIPTION

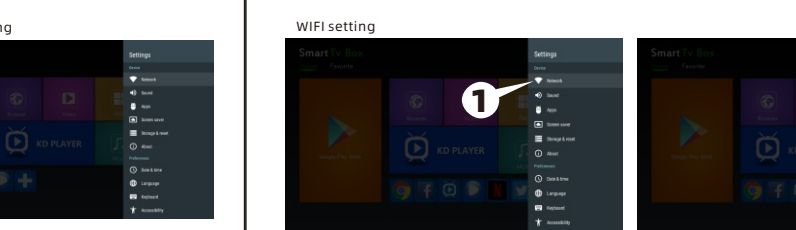
Power supply requirement: A 9V/1.5A power supply should be applied to this product, the plug specification should be DC 5.5mm X 2.1mm.

- 1、Corresponding power adapters are enclosed based on different countries or regions and users are located in.
- 2、Please DO note the power supply requirement if you want to buy the adapter by yourself or use a mobile power supply, this product may be malfunction or damaged if the voltage or current output by your power supply is above or below the requirement.

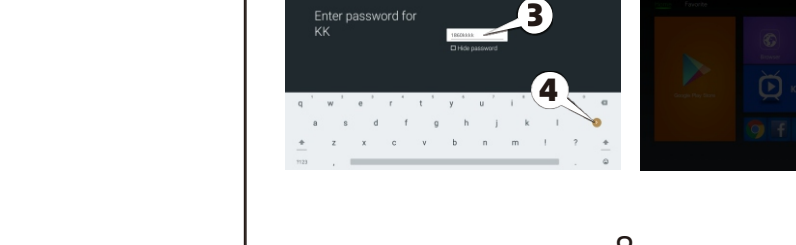
CHAPTER TWO COMMON ISSUES

2.1 START-UP

① Standby: pull the power switch up to enter the standby mode.

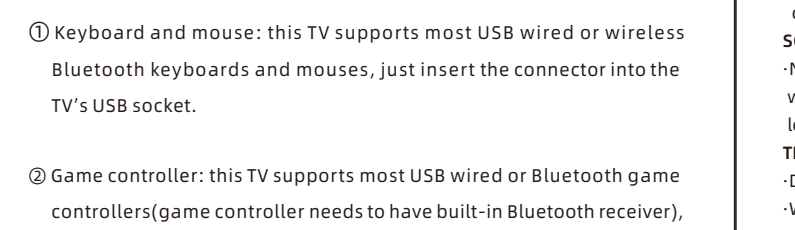


② TV turn-on: pull up the switches of power switch and system switch, after the snowflake animation is over and the Android system starts up, the product is ready for use.



2.2 OUTER DEVICE

① HDMI video device connection: when the product is in the standby mode, insert the HDMI wire of outer device into the HDMI socket in the back of the product, boot up the connected device and pull down the system switch.

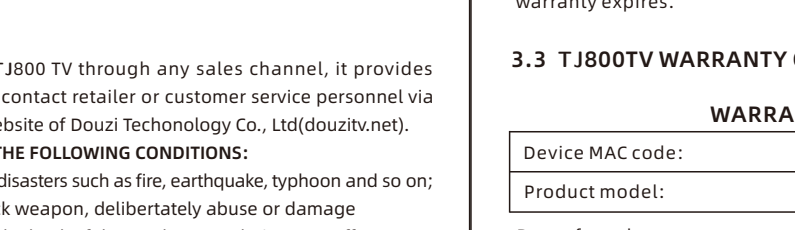


② If the screen keeps showing the standby image, please pull the system switch again or reboot the TV and outer device.

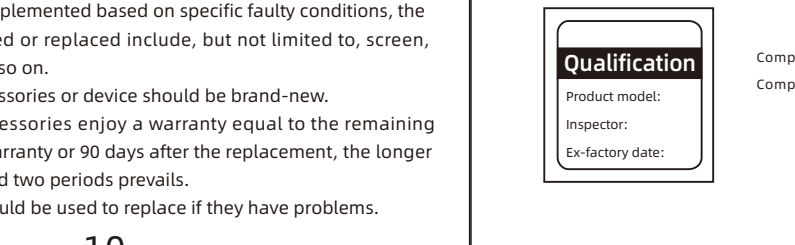
Note: A few outer devices may not connect with this product normally due to the compatibility issue between outer HDMI and USB devices, please be noted that this is not the product's fault or quality issue.

2.3 OPERATING SYSTEM INTRODUCTION

1、Turn on TV to enter the general Android system interface



2、Device setting

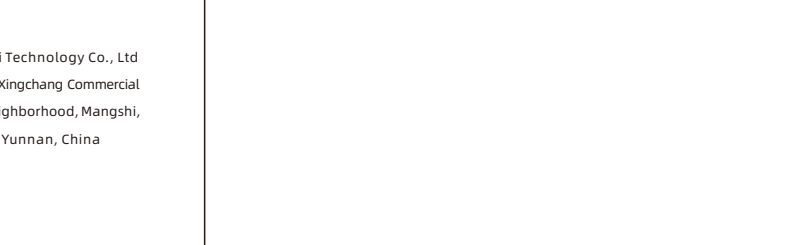


2.4 NETWORK CONNECTION

1、Turn on TV to enter the general Android system interface



2、Device setting



2.5 WIRELESS KEYBOARD, MOUSE, GAME CONTROLLER AND OTHER EXTENSION PARTS

① Keyboard and mouse: this TV supports most USB wired or wireless Bluetooth keyboards and mice, just insert the connector into the TV's USB socket.

② Game controller: this TV supports most USB wired or Bluetooth game controllers(game controller needs to have built-in Bluetooth receiver), for game controller's usage and settings, please refer to its relevant user manual and the setting descriptions in different APPs.

③ Mobile hard disk, U-disk, TF card: this product supports most mobile hard disks, U-disks and TF cards, as for TF card, it supports 128G maximum.

Note: Some old USB devices may not work normally due to the compatibility issue.

CHAPTER THREE WARRANTY AND AFTER-SALES COMMITMENT

3.1 TJ800 TV WARRANTY COMMITMENT

·TJ800 Mini TV and its enclosed accessories provide one-year warranty as of the date of sale.

SCOPE OF REPAIR:

·No matter you purchase TJ800 TV through any sales channel, it provides warranty service. You can contact retailer or customer service personnel via logging on to the official website of Douzi Technology Co., Ltd(douzitv.net).

THE WARRANTY EXCLUDES THE FOLLOWING CONDITIONS:

·Damages caused by natural disasters such as fire, earthquake, typhoon and so on;

·War, being used as an attack weapon, deliberately abuse or damage

The tamper-proof label on the back of the product case being torn off

REPAIR APPROACHES:

·Repair or replacement is implemented based on specific faulty conditions, the parts which can be repaired or replaced include, but not limited to, screen, motherboard, speaker and so on.

·All the replaced parts, accessories or device should be brand-new.

·The replaced parts or accessories enjoy a warranty equal to the remaining duration of the one-year warranty or 90 days after the replacement, the longer one of the above-mentioned two periods prevails.

·Brand-new accessories should be used to replace if they have problems.

3.2 TJ800 TV AFTER-SALES COMMITMENT

·Users can enjoy the lifetime after-sales service after the one-year warranty expires.

3.3 TJ800TV WARRANTY CERTIFICATE AND QUALIFICATION

WARRANTY CERTIFICATE

Device MAC code:

User signature:

Product model:

Retailer signature:

Date of purchase: _____

Qualification

Product model:

Inspector:

Ex-factory date:

Company name: Yunnan Dehong Douzi Technology Co., Ltd

Company address: No.A52-44,2ndFloor,Xingchang Commercial Plaza, Menghuan Neighborhood, Mangshi, Dehong Prefecture, Yunnan, China

FCC Statement:

This device complies with Part 15 of the FCC rules. Operation is subject to the following two conditions: 1) this device may not cause harmful interference, and 2) this device must accept any interference received, including interference that may cause undesired operation.

This equipment has been tested and found to comply with the limits for a Class B digital device, pursuant to Part 15 of the FCC rules. These limits are designed to provide reasonable protection against harmful interference in a residential installation. This equipment generates, uses and can radiate radio frequency energy and if not installed and used in accordance with the instructions, may cause harmful interference to radio communications. However, there is no guarantee that interference will not occur in a particular installation. If this equipment does cause harmful interference to radio or television reception, which can be determined by turning the equipment off and on, the user is encouraged to try correct the interference by one or more of the following measures:

- Reorient the receiving antenna.**
- Increase the separation between the equipment and receiver.**
- Connect the equipment into and outlet on a circuit different from that to which the receiver is connected.**
- Consult the dealer or an experienced radio/TV technician for help.**

Changes or modifications not expressly approved by the party responsible for compliance could void your authority to operate the equipment.