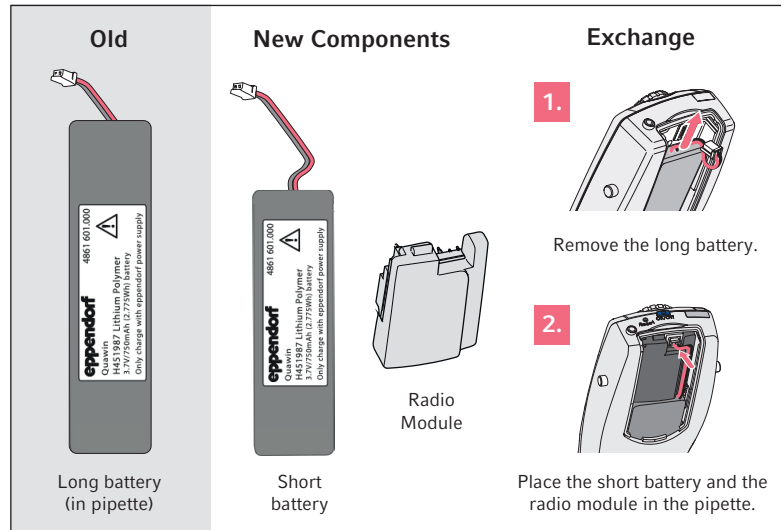
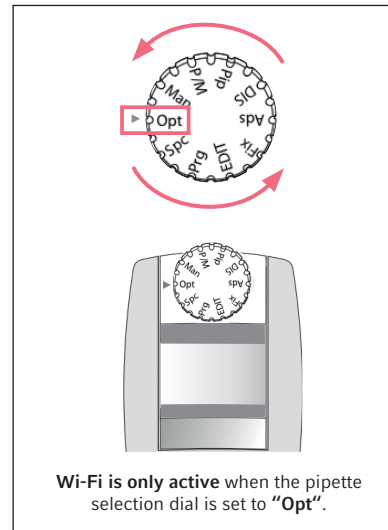


Quick Setup Guide - VisioNize pipette manager

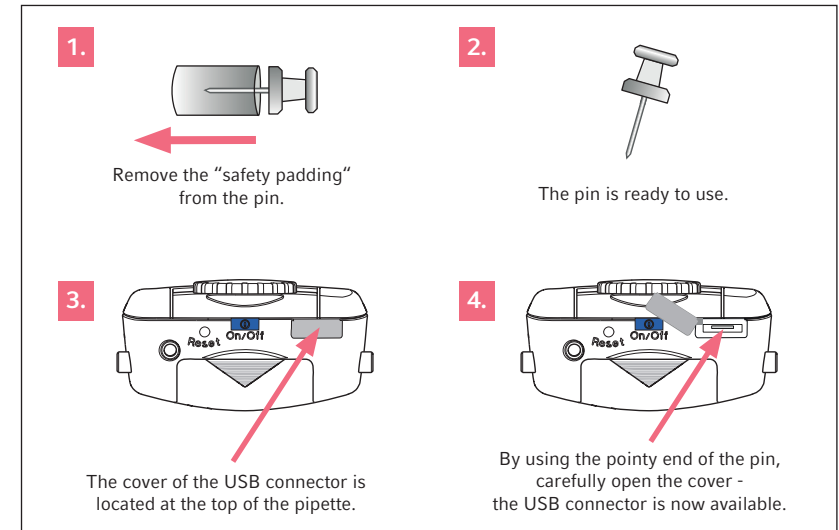
1. Replace the long battery (already in pipette) with the radio module and the new shorter battery



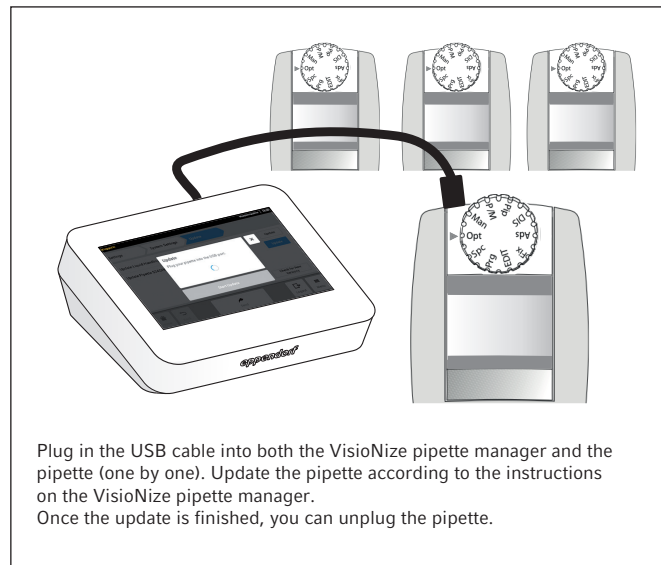
2. Turn the selection dial to "Opt"



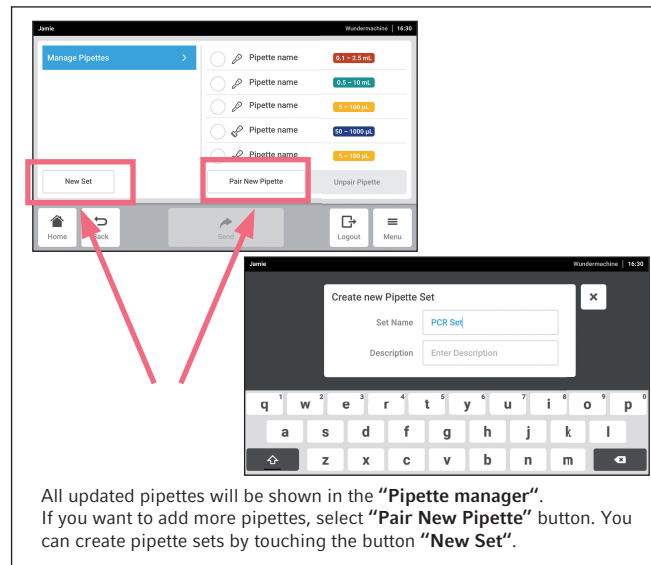
3. Open the cover of the USB connector by using the pin



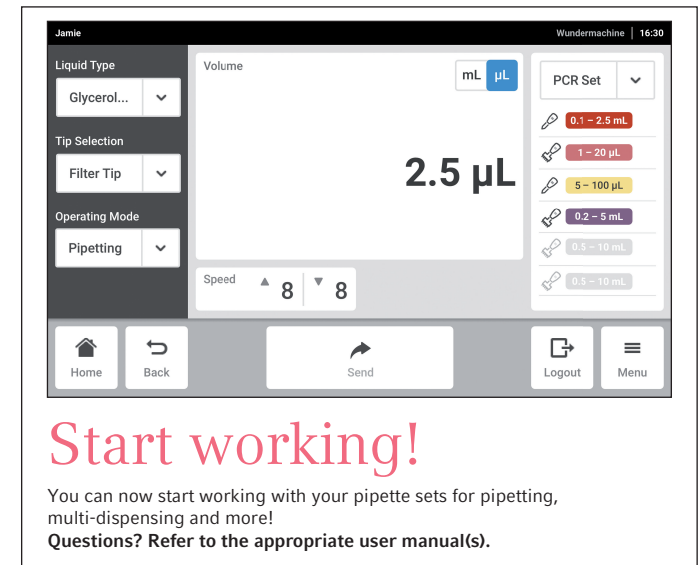
4. Connect and update the pipette with the VisioNize pipette manager



5. Create pipette sets



6. Start pipetting



Qualified

eppendorf

Register your instrument!
www.eppendorf.com/myeppendorf



VisionNize[®] pipette manager

Operating manual

Copyright© 2020 Eppendorf AG, Germany. All rights reserved, including graphics and images. No part of this publication may be reproduced without the prior permission of the copyright owner.

VisioNize®, Eppendorf Xplorer® and epT.I.P.S.® are registered trademarks of Eppendorf AG, Germany.

Eppendorf® and the Eppendorf Brand Design are registered trademarks of Eppendorf AG, Germany.

Registered trademarks and protected trademarks are not marked in all cases with ® or ™ in this manual.

Table of contents

| | | |
|----------|--|-----------|
| 1 | Operating instructions | 7 |
| 1.1 | Using this manual | 7 |
| 1.2 | Danger symbols and danger levels | 7 |
| 1.2.1 | Danger symbols | 7 |
| 1.2.2 | Danger levels | 7 |
| 1.3 | Symbols used | 7 |
| 1.4 | Other applicable documents | 8 |
| 2 | Safety | 9 |
| 2.1 | Intended use | 9 |
| 2.2 | Warnings for intended use | 9 |
| 2.3 | Warning symbols on the device | 10 |
| 3 | Product description | 11 |
| 3.1 | Product overview | 11 |
| 3.2 | Features | 11 |
| 3.2.1 | Supported dispensers | 12 |
| 3.3 | The "VisioNize pipette manager" software | 13 |
| 3.3.1 | Status bar | 13 |
| 3.3.2 | Pipette tips | 13 |
| 3.3.3 | Display area | 14 |
| 3.3.4 | Toolbar | 14 |
| 3.3.5 | Operating controls | 14 |
| 3.3.6 | Structure of the software menu | 15 |
| 3.4 | Software symbols | 16 |
| 3.4.1 | Symbols used in the "VisioNize pipette manager" software | 16 |
| 3.4.2 | Pipette labeling | 17 |
| 3.4.3 | Symbols for alarms, warnings and information | 18 |
| 3.5 | Liquid types | 18 |
| 3.5.1 | Volatile liquids | 18 |
| 3.5.2 | Foaming liquids | 18 |
| 3.5.3 | Viscous liquids | 19 |
| 3.6 | Materials | 19 |
| 3.7 | Warranty | 19 |
| 4 | Installation | 20 |
| 4.1 | Registering the pipette on the control panel | 20 |
| 5 | Operation | 21 |
| 5.1 | Switching the control panel on or off | 21 |
| 5.2 | Operating the user interface | 21 |

| | | |
|----------|---|-----------|
| 5.3 | Creating a liquid type | 21 |
| 5.3.1 | With preset parameters | 21 |
| 5.3.2 | With freely selectable parameters | 21 |
| 5.3.3 | Importing the liquid type | 22 |
| 5.4 | Using a single pipette | 22 |
| 5.5 | Combining pipettes to form a set | 22 |
| 6 | User administration | 23 |
| 6.1 | The user administration concept | 23 |
| 6.1.1 | Administrator | 23 |
| 6.1.2 | User with standard rights | 23 |
| 6.1.3 | User with restricted rights | 23 |
| 6.1.4 | User rights without user administration | 23 |
| 6.2 | User rights | 23 |
| 6.2.1 | Home screen | 23 |
| 6.2.2 | Settings menu | 24 |
| 6.2.3 | Users menu | 24 |
| 6.3 | Defining settings in the user administration | 25 |
| 6.3.1 | Creating an administrator | 25 |
| 6.3.2 | Editing the user administration | 26 |
| 6.3.3 | Deactivating the user administration | 27 |
| 6.4 | Editing user accounts as an administrator | 28 |
| 6.4.1 | Creating a user account | 28 |
| 6.4.2 | Editing user accounts | 29 |
| 6.4.3 | Deleting a user account | 30 |
| 6.4.4 | Resetting the password/PIN for a user account | 31 |
| 6.5 | Administrating your own user account | 32 |
| 7 | Troubleshooting | 33 |
| 7.1 | General errors | 33 |
| 7.1.1 | Radio contact | 33 |
| 7.1.2 | USB stick | 33 |
| 7.1.3 | Software update | 33 |
| 8 | Maintenance | 34 |
| 8.1 | Cleaning | 34 |
| 8.1.1 | Cleaning the housing | 34 |
| 8.1.2 | Locking and cleaning the touch screen | 34 |
| 8.1.3 | Unlocking the touch screen | 34 |
| 9 | Technical data | 35 |
| 9.1 | Weight/dimensions | 35 |
| 9.2 | Impact strength | 35 |

- 9.3 Power supply 35
 - 9.3.1 Electrical connection data – device 35
 - 9.3.2 Electrical connection data – USB port. 35
 - 9.3.3 Electrical connection data – mains/power supply device 36
- 9.4 Radio module 36
- 9.5 Ambient conditions 36
- 10 Transport, storage and disposal 37**
 - 10.1 Storage 37
 - 10.2 Decontamination before shipment 37
 - 10.3 Disposal. 38
 - 10.4 Shipping the device. 39

1 Operating instructions



1.1 Using this manual

- ▶ Read this operating manual completely before using the device for the first time. Observe the instructions for use of the accessories where applicable.
- ▶ This operating manual is part of the product. Please keep it in a place that is easily accessible.
- ▶ Enclose this operating manual when transferring the device to third parties.
- ▶ The current version of the operating manual for all available languages can be found on our webpage www.eppendorf.com/manuals.

1.2 Danger symbols and danger levels

1.2.1 Danger symbols


The safety instructions in this manual have the following danger symbols and danger levels:

| | | | |
|---|---------------------|---|------------------------|
|  | Hazard point |  | Material damage |
|---|---------------------|---|------------------------|

1.2.2 Danger levels

| | |
|----------------|---|
| DANGER | <i>Will</i> lead to severe injuries or death. |
| WARNING | <i>May</i> lead to severe injuries or death. |
| CAUTION | May lead to light to moderate injuries. |
| NOTICE | May lead to material damage. |

1.3 Symbols used

| Depiction | Meaning |
|---|-----------------------------------|
| 1. | Actions in the specified order |
| 2. | |
| ▶ | Actions without a specified order |
| • | List |
| <i>Text</i> | Display or software texts |
|  | Additional information |

1.4 Other applicable documents

The following documents also apply:

- "VisioNize pipette manager" installation guide

2 Safety

2.1 Intended use

The control panel is designed for wireless communication with Eppendorf electronic dispensers. The control panel and the registered electronic dispensers transmit the data in a separate closed radio network.

The control panel is intended exclusively for use in the field of research and for operation by trained and skilled personnel.

The device is intended for indoor use only. Do not use it on a wet work surface.

2.2 Warnings for intended use



- ▶ Check whether the delivery is complete.
- ▶ Check all parts for any transport damage.
- ▶ To safely transport and store the device, retain the transport box and packing material.



WARNING! Danger due to incorrect voltage supply.

- ▶ Only connect the device to voltage sources which correspond with the electrical requirements on the name plate.



CAUTION! Poor safety due to incorrect accessories and spare parts.

The use of accessories and spare parts other than those recommended by Eppendorf may impair the safety, functioning and precision of the device. Eppendorf cannot be held liable or accept any liability for damage resulting from the use of accessories and spare parts other than those recommended, or from the improper use of such equipment.

- ▶ Only use accessories and original spare parts recommended by Eppendorf.



NOTICE! Material damage due to incorrect use.

- ▶ Only use the product for its intended purpose as described in the operating manual.
- ▶ Ensure adequate resistance of materials when using chemical substances.
- ▶ If in doubt, contact the manufacturer of the product.



NOTICE! Damage to device from unsuitable cleaning agents or sharp or pointed objects.

Use of unsuitable cleaning agents may damage the device.

- ▶ Do not use corrosive cleaning agents, strong solvents or abrasive polishes.
- ▶ Check the compatibility with the materials used.
- ▶ Do **not** clean the device with acetone or organic solvents with a similar effect.
- ▶ Do **not** use sharp or pointed objects to clean the device.



NOTICE! Damage to device or malfunctions due to a damaged touch screen.

- ▶ Do not operate the device.
- ▶ Switch off the device, disconnect the mains/power plug and have the touch screen replaced by a service technician who has been authorized by Eppendorf.

2.3 Warning symbols on the device

| Warning symbol | Meaning |
|----------------|----------------------------|
| | Read the operating manual. |

3 Product description

3.1 Product overview

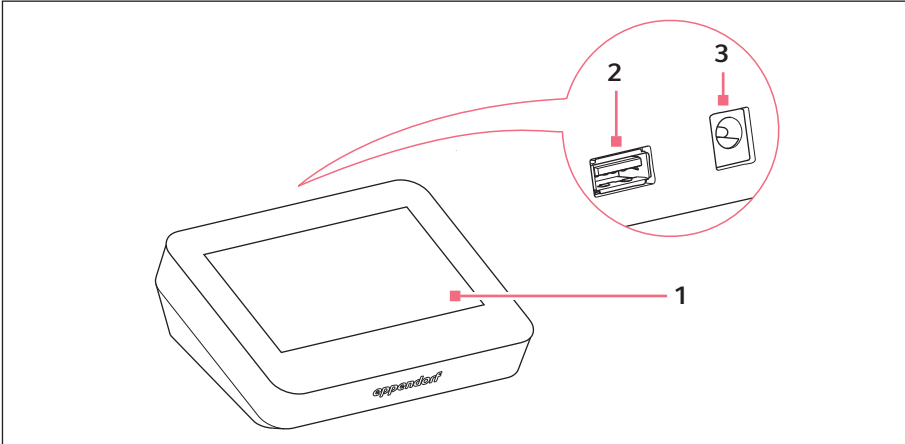


Fig. 3-1: "VisioNize pipette manager" control panel

- | | |
|--|--|
| <p>1 Touch screen</p> <p>2 USB port FAT32 format</p> | <p>3 Power connection for mains/power supply device</p> |
|--|--|

3.2 Features

The "VisioNize pipette manager" control panel is designed for wireless communication with Eppendorf electronic dispensers. The dispensers must be equipped with a radio module for this purpose. Communication between the control panel and the dispensers takes place in an independent radio network.

Using the "VisioNize pipette manager" software it is possible to set up and manage up to 30 dispensers, transfer parameters, combine pipettes into sets, and reserve pipettes. The *Liquid Manager* menu contains a selection of predefined liquid types that are optimized for volatile, foaming and viscous liquids.

3.2.1 Supported dispensers

i The pipette must be equipped with a suitable radio module.

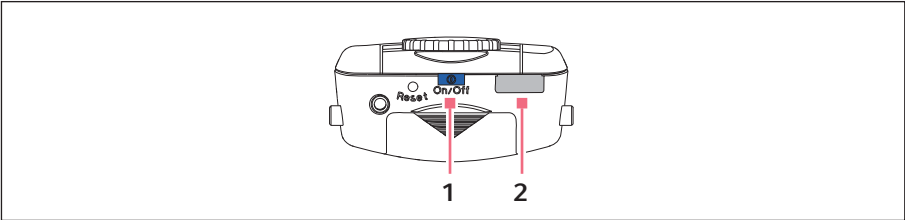


Fig. 3-2: Eppendorf Xplorer/Xplorer plus

1 On/Off key

2 USB interface

| Dispenser | On/off switch | Interface |
|------------------------|---------------|-----------|
| Eppendorf Xplorer | On/Off key | USB |
| Eppendorf Xplorer plus | On/Off key | USB |

3.3 The "VisioNize pipette manager" software

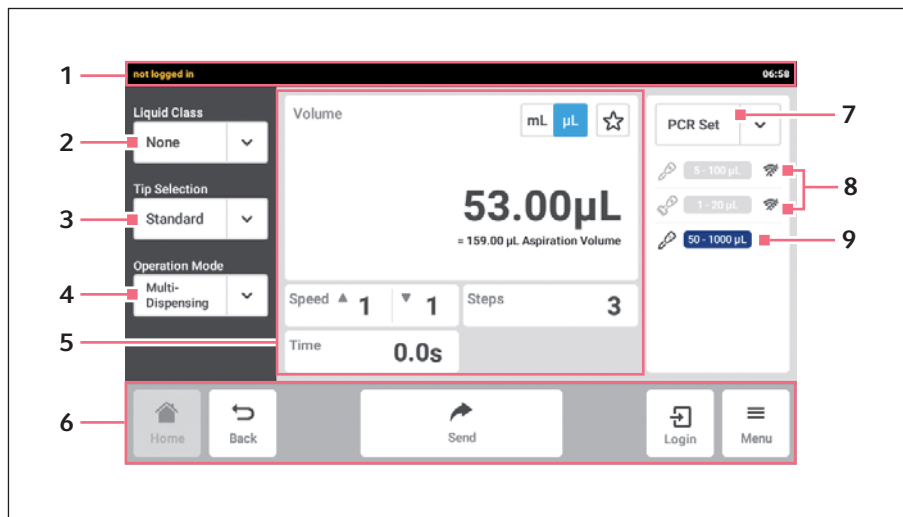


Fig. 3-3: Home screen

- | | |
|--|---|
| 1 Status bar | 6 Toolbar |
| 2 Display of the selected liquid type Call the <i>Liquid Manager</i> | 7 Selected pipette set |
| 3 For selecting the pipette tip | 8 Inactive pipettes in the pipette set No radio contact |
| 4 For selecting the operation mode | 9 Active pipette in the pipette set With radio contact |
| 5 Display area | |

3.3.1 Status bar

The status bar contains information about the user, time, device status and messages. The user information is only displayed if user administration is activated and the user is logged in.

3.3.2 Pipette tips

- *epT.I.P.S. (Default)*
- *ep Dualfilter T.I.P.S.*
- *epT.I.P.S. LoRetention*
- *ep Dualfilter T.I.P.S. LoRetention*







3.3.3 Display area

The display area shows different function areas: selected unit, set volume, aspiration speed, dispensing speed, dispensing steps etc.

3.3.4 Toolbar

The toolbar contains the buttons for navigating in the software.

3.3.5 Operating controls











| Operating control | Description |
|--|----------------------|
|  | Inactive filter |
|  | Active filter |
|  | Function active |
|  | Function inactive |
|  | Data export |
|  | Inputting parameters |




3.3.6 Structure of the software menu

| Menu | Submenu | Description |
|-------------------------------|---------------------------------------|--|
| <i>Settings</i> | <i>About this Control Panel</i> | Information on the control panel. |
| | <i>System Settings</i> | Software system data (date and time, network, update software). |
| | <i>Device Settings</i> | Touch screen settings. |
| | <i>User Management</i> | Activate and deactivate user administration; set up and manage user accounts. |
| <i>Contacts & Support</i> | <i>Contacts & Support</i> | Enter contact details. |
| | <i>Diagnostics</i> | Access service functions. |
| | <i>Service</i> | Access service functions. |
| <i>Clean Screen</i> | – | Lock the touch screen. |
| <i>Events</i> | – | Display software events. |
| <i>Liquid Manager</i> | <i>Favorite Liquid Types</i> | Selected liquid types as favorites. |
| | <i>Eppendorf Liquid Types</i> | Factory defined liquid types. |
| | <i>Liquid Types</i> | User-defined liquid types. |
| | <i>My Liquid Types</i> | User-defined liquid types when user administration is activated. |
| | <i>Archive</i> | Collection of personalized liquid types when user administration is deactivated again. |
| <i>Export</i> | <i>Events</i> | Export software events. |
| | <i>System Information for Service</i> | Export system information. |
| <i>Pipette Manager</i> | <i>New Set</i> | Create a new pipette set. |
| | <i>Edit Set</i> | Edit an existing pipette set. |
| | <i>Add Pipettes</i> | Add pipettes to the selected pipette set. |
| | <i>Rename</i> | Rename a pipette. |
| | <i>Remove</i> | Remove a pipette from the pipette set. |
| | <i>Pair New Pipette</i> | Register a pipette with the radio network. |
| | <i>Unpair Pipette</i> | Deregister a pipette from the radio network. |
| <i>Login</i> | – | Log in to user administration. |

3.4 Software symbols

3.4.1 Symbols used in the "VisioNize pipette manager" software




| Symbol | Description | Meaning |
|---|--|---|
|  | Single-channel pipette | – |
|  | Multi-channel pipette | – |
|  | Selected pipette | – |
|  | Pipette status | The value that was entered is outside the valid value range. The value will be rounded to the closest possible value. |
|  | Pipette status | The parameters were transmitted successfully. |
|  | Pipette status | The parameters cannot be transmitted (e.g., no suitable pipette available or value is outside the valid value range). |
|  | Pipette status | The pipette is reserved by another user. |
|  | The rechargeable battery charge level is low | No actions are possible. The rechargeable battery must be charged. |
|  | Predefined liquid type by Eppendorf | – |
|  | Freely definable liquid type | – |

| Symbol | Description | Meaning |
|---|-----------------------------|---------|
|  | Create a liquid type | – |
|  | Import data | – |
|  | Radio contact is not active | – |



3.4.2 Pipette labeling

| Labeling | Color name | Model |
|--------------|--------------|--------------------------------------|
| 0.5 – 10 µL | medium gray | Single-channel 8/12 multi-channel |
| 1 – 20 µL | antique pink | 16/24 multi-channel |
| 5 – 100 µL | light yellow | 16/24 multi-channel |
| 5 – 100 µL | yellow | Single-channel 8/12 multi-channel |
| 10 – 200 µL | yellow | Single-channel |
| 15 – 300 µL | orange | Single-channel 8/12 multi-channel |
| 50 – 1000 µL | blue | Single-channel |
| 50 – 1200 µL | green | Single-channel 8/12 multi-channel |
| 0.1 – 2.5 mL | red | Single-channel |
| 0.2 – 5 mL | violet | Single-channel |
| 0.5 – 10 mL | turquoise | Single-channel |


3.4.3 Symbols for alarms, warnings and information

| Symbol | Description |
|---|-------------|
|  | Alarm |
|  | Warning |
|  | Information |

3.5 Liquid types

-  The stored liquid types contain optimized parameters for the dispenser (e.g., aspiration and dispensing speed, number of pre-wetting cycles, adjusted volume etc.). If no liquid type is selected, the parameters will be reset to the default values.
-  Foam formation is avoided with all liquids.

3.5.1 Volatile liquids

-  The pipette tips are automatically pre-wetted for all volatile liquid types. The pipette tips must remain in the liquid until the process is completed!

Examples of volatile liquids:

- Ethanol
- Methanol
- Acetone

Parameters:

- Pre-wetting

3.5.2 Foaming liquids

Examples of foaming liquids:

- Protein solution

3.5.3 Viscous liquids

Examples of viscous liquids:

- Antibody solution
- Paraffin oil
- Tween 20

Parameters:

- Aspiration speed
- Dispensing speed
- Operating mode

| Adjusted parameters | < 30 mPa·s | < 300 mPa·s | < 1000 mPa·s |
|---|------------|-------------|--------------|
| Aspiration speed | reduced | reduced | reduced |
| Dispensing speed | reduced | reduced | reduced |
| Scope of operating modes (epT.I.P.S. Standard) | unchanged | reduced | reduced |
| Scope of operating modes (epT.I.P.S. LoRetention) | unchanged | unchanged | reduced |

3.6 Materials

The components which can be accessed by the user are made of the following materials:

| Component | Material |
|-------------|--|
| Cover plate | Glass |
| Housing | PC + ABS blend (polycarbonate + acrylonitrile butadiene styrene) |

3.7 Warranty

In the event of a warranty claim, contact your local Eppendorf contractual partner.

No warranty is given in the following cases:

- In the event of improper use.

4 Installation

4.1 Registering the pipette on the control panel

Prerequisites

- The pipette software is up to date.
1. Call the *Menu* screen.
 2. Start the *Pipette Manager*.
 3. Select the pipette.
 4. Tap on the *Pair New Pipette* button.
 5. Turn the pipette selection dial to the **Opt** mode.
 6. Select the *Wi-Fi* menu.
 7. Select the *Connect AUTO* menu item.
The pipette is registered on the control panel.
The pipette can be used individually or it can be assigned to a pipette set.

5 Operation

5.1 Switching the control panel on or off

The control panel can only be switched on or off at the mains/power plug.

5.2 Operating the user interface



The touch screen is designed to be operated with your fingers only without the need for tools. You can wear laboratory gloves made of nitrile or latex. Alternatively, you can also use a stylus, for example, when thick gloves need to be worn in the laboratory.



If liquid comes into contact with the touch screen, the functions displayed on the touch screen may be triggered.

- ▶ Do not drop any liquids onto the touch screen.
- ▶ Do not spill any liquids onto the touch screen.

5.3 Creating a liquid type

5.3.1 With preset parameters

The appropriate parameters for the selected liquid type have been preset.

1. Call the *Liquid Manager*.
2. Tap on the *New* button.
3. Select the liquid type *Volatile*, *Viscous* or *Foam*.
4. Follow the instructions on the screen.

5.3.2 With freely selectable parameters

All the parameters have to be set manually.

Parameters to be set:

- Pre-wetting steps
 - Aspiration speed
 - Dispensing speed
 - Name, description and short symbol (appears on the pipette display)
1. Select the *Menu > Liquid Manager* menu.
 2. Tap on the *New* button.
 3. Select the liquid type *Custom*.
 4. Follow the instructions on the screen.

5.3.3 Importing the liquid type

Prerequisites

- A USB stick (file system FAT32) is available.
- An import file is available on the USB stick.

1. Insert the USB stick.
2. Select the *Menu > Liquid Manager* menu.
3. Tap on the *Import* button.
4. Follow the instructions on the screen.

5.4 Using a single pipette

To be able to work with a pipette, it does not have to be assigned to a pipette set.

Prerequisites

- A pipette with a radio module is available.
1. Call the home screen.
 2. Open the Pipette Set drop-down list.
 3. Select *Select Single Pipette*.
 4. Select the desired pipette.

5.5 Combining pipettes to form a set

Pipettes can be assigned to a set in the *Pipette Manager* menu. A set can be selected on the home screen and several pipettes are available at the same time.

Prerequisites

- Pipettes are available for selection in the *Manage Pipettes* menu.
1. Call the *Pipette Manager*.
 2. Tap on the *New Set* button.
 3. Enter a name for the set and a description.

6 User administration

6.1 The user administration concept

User administration can be used to organize access to the control panel. There are three user roles:

- Administrator
- User with standard rights
- User with restricted rights

6.1.1 Administrator

The administrator has additional rights:

- Configuring the control panel
- Access to user administration

6.1.2 User with standard rights

A normal user can operate the control panel without restrictions.

6.1.3 User with restricted rights

A user with restricted rights can operate the control panel with restrictions.

6.1.4 User rights without user administration

Without user administration all users have the same rights as an administrator.

6.2 User rights

6.2.1 Home screen

| Action | User with restricted rights | User with standard rights | Administrator/ user (without user administration) |
|------------------------------|-----------------------------|---------------------------|--|
| Selecting the liquid type | x | x | x |
| Selecting the pipette tip | x | x | x |
| Selecting the operating mode | x | x | x |
| Inputting parameters | x | x | x |
| Selecting the pipette set | x | x | x |
| Login/logout | x | x | x |

6.2.2 Settings menu

| Action | User with restricted rights | User with standard rights | Administrator/ user (without user administration) |
|------------------------------|-----------------------------|---------------------------|---|
| Viewing device information | x | x | x |
| Editing device information | – | x | x |
| Viewing system settings | x | x | x |
| Setting an acoustic alarm | – | – | x |
| Editing system settings | – | x | x |
| Updating the software | x | x | x |
| Calling user administration | – | – | x |
| Viewing network settings | x | x | x |
| Configuring network settings | – | – | x |

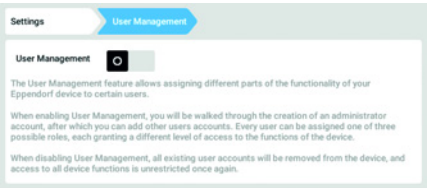
6.2.3 Users menu

| Action | User with restricted rights | User with standard rights | Administrator/ user (without user administration) |
|--|-----------------------------|---------------------------|---|
| Changing one's own password | x | x | x |
| Viewing administrator settings (does not apply to user administration) | x | x | x |
| Viewing user settings | x | x | x |
| Creating a user account | – | – | x (administrator) |

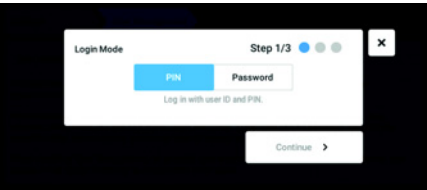
| Action | User with restricted rights | User with standard rights | Administrator/ user (without user administration) |
|---------------------------|-----------------------------|---------------------------|--|
| Changing the user name | — | — | x |
| Changing user rights | — | — | x |
| Resetting a user password | — | — | x |
| Deleting a user account | — | — | x |

6.3 Defining settings in the user administration

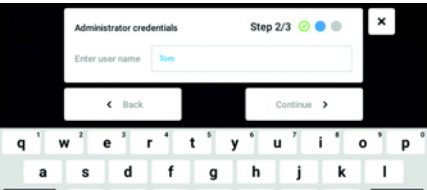
6.3.1 Creating an administrator



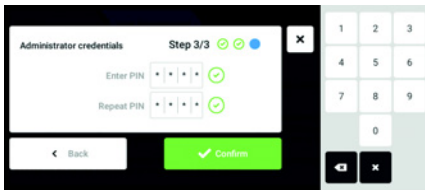
1. Tap the *Menu* button and navigate to the *Settings > User Management* menu item.
2. To activate the user administration, slide the *User Management* switch to the *I* position. The *Login mode* window appears.



3. Define the login mode for all users.
4. Continue the process with *Continue*. The *Administrator credentials* window appears.

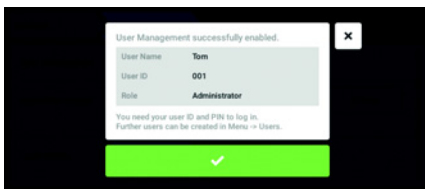


5. Enter the user name for the first administrator in the *Enter User Name* field.
6. Continue the process with *Continue*. The *Administrator credentials* window appears.



7. Enter PIN or password in the *Enter PIN/ Password* field. Confirm the entry in the *Repeat PIN/Password* field.

8. Continue the process with *Continue*.
 The *User Management successfully enabled* window appears.
 The user administration is activated.
 The user account for the first administrator is created.

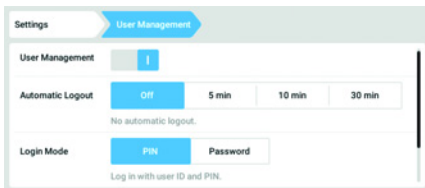


9. Confirm the message.
 The *User Management* window appears.
 It is now possible to edit the user administration.

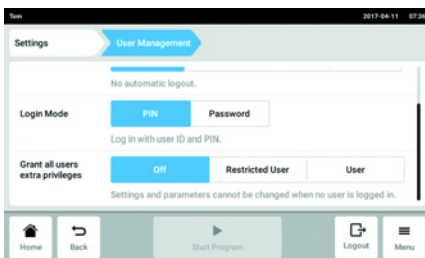
6.3.2 Editing the user administration

Prerequisites

- The administrator is logged in.



1. Tap the *Menu* button and navigate to the *Settings > User Management* menu item.



2. Define the settings for the user administration.

- *User Management*: Switch the user administration on and off.
- *Automatic Logout*: Define the time after which a user is automatically logged out if the touch screen is not used.
- *Login Mode*: Define the login mode for all users.
- *Grant all users extra privileges*: Restricted rights (*Restricted User*) or standard rights (*User*) are active for all users.



When the *Grant all users extra privileges* option is activated, a login is not necessary. Also, users who are not recorded in the user administration can operate the device with these rights (*Restricted User / User*).

6.3.3 Deactivating the user administration



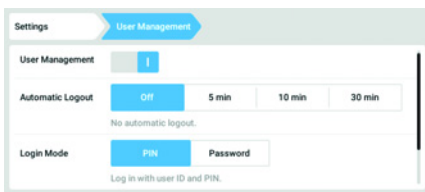
NOTICE! Data loss in case of deactivation of the user administration

Deactivating the user administration deletes all user accounts.

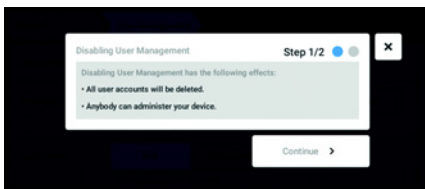
- ▶ Check whether deactivation of the user administration is required.
- ▶ Inform all users that the user accounts have been deleted.

Prerequisites

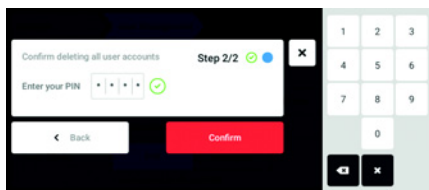
- The administrator is logged in.



1. Tap the *Menu* button and navigate to the *Settings > User Management* menu item.
2. To deactivate the user administration, slide the *User Management* switch to the *0* position.
The *Disabling User Management* window appears.



3. Continue the process with *Continue*.
The *Confirm deleting all user accounts* window appears.



4. Enter the PIN/password.
5. Complete the process with *Continue*.
 The user administration is deactivated.
 All user accounts are deleted.

6.4 Editing user accounts as an administrator



NOTICE! Data loss due to loss of the administrator password.

The administrator can only change his password or PIN with his access data. If the administrator's access data is lost, no changes can be made to the user administration and system settings.

In this case, the device will have to be reset to the factory settings by an authorized service technician. All user accounts and any data and settings stored on the device will be deleted.

- ▶ Create a second user account with administrator rights.
- ▶ Keep the administrator password secure.

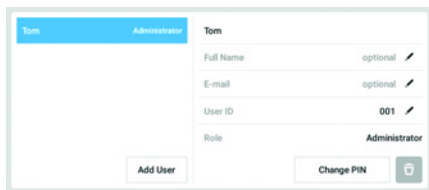
6.4.1 Creating a user account



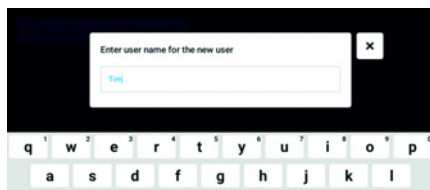
You can create 999 user accounts.

Prerequisites

- The administrator is logged in.



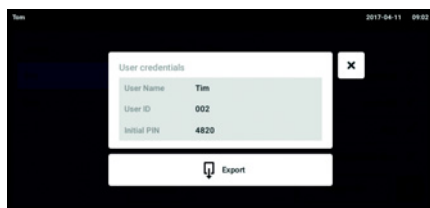
1. Tap the *Menu* button and navigate to the *User* menu item.
 The list with the user accounts is displayed.
2. Tap the *Add User* button.
 The *Enter User Name for the new user* field appears.



3. Enter the user name.

4. Confirm your entry.

The *User credentials* window appears.
The user account is created. The user data appears in the window.
The user is assigned to the user group *Restricted User*.



5. **Optional export of user data:** Connect the USB stick and tap the *Export* button.

6. Confirm the export.

The user data is exported to the USB stick in a TXT file.

7. If the export is successful, the *Export successful* window appears.

To complete the process, confirm the message.

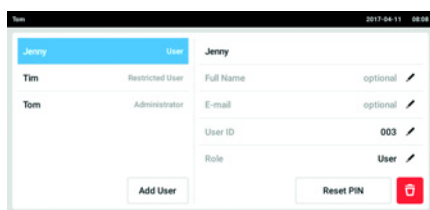
6.4.2 Editing user accounts



Users with restricted user rights or standard rights can only edit their own *Full Name* and *E-mail* entries. Users can always change their own PIN or password. Administrators can assign a new user ID to a user account and change the rights.

Prerequisites

- The administrator is logged in.



1. Tap the *Menu* button and navigate to the *User* menu item.

The list with the user accounts appears.
Entries that can be edited are indicated by a black pen.

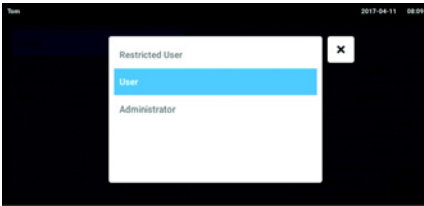
2. Select the user account.

3. Optional: Enter the full name.

4. Optional: Enter the e-mail address.

5. To change the user ID, tap *User-ID*.

6. Select the new user ID.



7. To change the user group and the corresponding rights, tap *Role*. The list with the available user groups appears.

8. Assign a user group to the user.

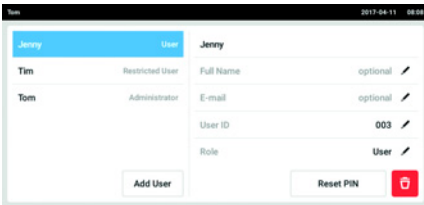
- Restricted User
- User
- Administrator

The selected parameters are stored and appear in the user account.

6.4.3 Deleting a user account

Prerequisites

- The administrator is logged in.



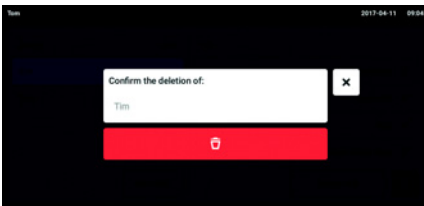
1. Tap the *Menu* button and navigate to the *User* menu item.

The list with the user accounts appears.

2. Select the user account to be deleted.

3. Tap the *Recycle bin* symbol.

The *Confirm the deletion of:* window appears.



4. Confirm that you want to delete the user account.

The user account is deleted.

6.4.4 Resetting the password/PIN for a user account

If a user has forgotten their password/PIN, the administrator can generate a new password.



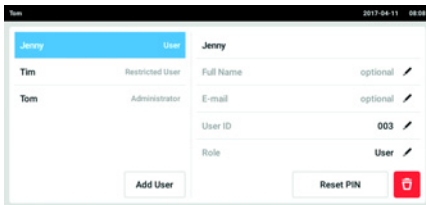
The administrator can only change their password or PIN with their current access data. If the administrator's access data is lost, changes are no longer possible in the user administration.

In this case, the device must be reset to the factory settings by an authorized service technician. All user accounts and the programs, log files and logs stored on the device will be deleted.

- Create a second user account with administrator rights.

Prerequisites

- The administrator is logged in.



1. Tap the *Menu* button and navigate to the *User* menu item.

The list with the user accounts appears.

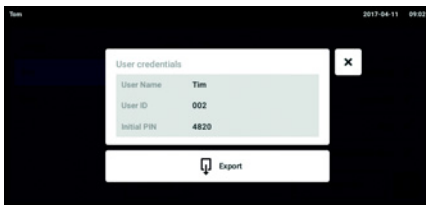
2. Select the user account.

3. Tap the *Reset Password/PIN* button.

The *Do you want to reset the Password/PIN for:* window appears.

4. Confirm the process with *Reset*.

The *New Credentials* window appears. The new password/PIN is created automatically.



5. To export the user data, connect the USB stick and tap the *Export* button.

6. Confirm the export.

The user data is exported to the USB stick in a TXT file.

7. If the export is successful, the *Export successful* window appears.

To complete the process, confirm the message.

6.5 Administrating your own user account

Users can only edit their own *Full Name* and *E-mail* entries. Users can always change their own PIN or password.

Prerequisites

- The user is logged in.

The screenshot shows a mobile application interface for user management. At the top, a header bar displays the user's name 'Jenny' and the time '2017-04-11 08:44'. Below the header, there is a list of users on the left and a detailed profile view on the right. The profile view for 'Jenny' shows fields for 'Full Name' (optional), 'E-mail' (optional), 'User ID' (003), and 'Role' (User). There are buttons for 'Add User', 'Change PIN', and a trash icon.

1. Tap the *Menu* button and navigate to the *User* menu item.
The list with the user accounts appears. Entries indicated by a black pen can be edited.
2. Select the user account.
3. Optional: Enter the full name.
4. Optional: Enter the e-mail address.
5. To change the password/PIN, tap the *Change Password/PIN* button.
6. Enter the current password/PIN in the *Enter current Password/PIN* field.
7. Enter the new password/PIN in the *Enter new Password/PIN* and *Repeat new Password/PIN* fields.
8. Confirm your entry.
The message *Password/PIN successfully changed* appears.
The new password or the new PIN is active.

7 Troubleshooting

7.1 General errors

7.1.1 Radio contact

| Problem | Cause | Solution |
|---------------------------------|---|--|
| Parameters are not transmitted. | <ul style="list-style-type: none"> The software is outdated. | <ul style="list-style-type: none"> Update the pipette software. |

| Problem | Cause | Solution |
|-------------------|---|---|
| No radio contact. | <ul style="list-style-type: none"> The "Opt" operation mode is not set. | <ul style="list-style-type: none"> Set the "Opt" operation mode on the pipette. |
| | <ul style="list-style-type: none"> The radio module is deactivated. | <ul style="list-style-type: none"> Set the pipette radio module to ON in the <i>Wi-Fi on/off</i> menu. |
| | <ul style="list-style-type: none"> The driver for the radio module was not loaded. | <ul style="list-style-type: none"> Restart the control panel. |
| | <ul style="list-style-type: none"> The pipette is always offline. | <ul style="list-style-type: none"> Restart the control panel. Restart the pipette. |

7.1.2 USB stick

| Problem | Cause | Solution |
|----------------------------|---|---|
| USB stick is not detected. | <ul style="list-style-type: none"> The USB stick is incorrectly formatted. | <ul style="list-style-type: none"> Format the USB stick in FAT32 format. |
| | <ul style="list-style-type: none"> The USB stick is not supported. | <ul style="list-style-type: none"> Use a different USB stick. |

7.1.3 Software update

| Problem | Cause | Solution |
|---------------------------------|--|--|
| Software update is not running. | <ul style="list-style-type: none"> The USB stick is not detected. | <ul style="list-style-type: none"> Use a different USB stick. |

| Problem | Cause | Solution |
|---------------------------------|--|---|
| Software update is not running. | <ul style="list-style-type: none"> The necessary files are missing. | <ul style="list-style-type: none"> Make sure that all files are available. |

| Problem | Cause | Solution |
|---------------------------------|---|--|
| Software update is not running. | <ul style="list-style-type: none"> The software package has been unpacked twice. | <ul style="list-style-type: none"> Unpack the software package once only. |

8 Maintenance

8.1 Cleaning



NOTICE! Damage from the use of aggressive chemicals.

- ▶ Do not use any aggressive chemicals on the device or its accessories, such as strong and weak bases, strong acids, acetone, formaldehyde, halogenated hydrocarbons or phenol.
 - ▶ If the device has been contaminated by aggressive chemicals, clean it immediately using a mild cleaning agent.
-

8.1.1 Cleaning the housing

1. Moisten a cloth with cleaning agent.
2. Remove external contamination.
3. Moisten a new cloth with water.
4. Wipe down the housing.

8.1.2 Locking and cleaning the touch screen

1. Select Menu -> Clean Screen.
The touch screen is locked.
2. Wipe the glass plate of the touch screen with a cloth and a mild cleaning agent.

8.1.3 Unlocking the touch screen

1. Touch the corners in the numbered sequence.

9 Technical data

9.1 Weight/dimensions

| | |
|--------|----------|
| Height | 75 mm |
| Width | 196 mm |
| Depth | 153.7 mm |
| Weight | 1112 g |

9.2 Impact strength



Tested in accordance with IEC 62262 and IEC 60068-2-75.

| | |
|---------------|----------|
| Impact energy | max. 1 J |
| IK code | IK06 |

9.3 Power supply

9.3.1 Electrical connection data – device

| | |
|--------------------------------------|-------------------|
| Input voltage | DC 5 V, $\pm 6\%$ |
| Maximum current consumption | DC 4 A |
| Power consumption (normal operation) | 5 W |
| Degree of pollution | 2 |
| Protection class | III |

9.3.2 Electrical connection data – USB port

| | |
|--------------------|--------|
| Maximum power load | 500 mA |
|--------------------|--------|

9.3.3 Electrical connection data – mains/power supply device

| | |
|----------------------------------|---|
| Type | Mains/power adapter with exchangeable power plug adapters |
| Input voltage | 100 V – 240 V, ± 10 % |
| Frequency | 50 – 60 Hz, ± 5 % |
| Output voltage | DC 5 V, ± 6 % |
| | |
| Maximum output power | 20 W |
| Power consumption maximum | 24 W |
| Power consumption (without load) | < 0.1 W (230 V AC) |
| Overvoltage category | II |
| Degree of pollution | 2 |
| Protection class | II |

9.4 Radio module

| | |
|--------------------|----------------------|
| Transmitting power | 0.063 W |
| Power level | 18 dBm |
| Frequency band | 2412 Hz – 2462 Hz |
| Radio channel | 1 – 11 (1 is preset) |
| Operating mode | Access point |
| Access points | 1 |
| Approval | [FCC, IC] |
| Standard | 802.11 a/b/g/n |

9.5 Ambient conditions

| | Temperature range | Relative humidity | Atmospheric pressure |
|----------------------|-------------------|-------------------------------------|--|
| Operating conditions | 5 °C – 40 °C | 10 % – 95 %, no condensing humidity | 79.5 kPa – 106 kPa Up to a height of 2000 m above sea level |

10 Transport, storage and disposal

10.1 Storage

| | Air temperature | Relative humidity | Atmospheric pressure |
|---------------------------|-----------------|-------------------|----------------------|
| In transport packing | -25 °C – 55 °C | 10 % – 95 % | 70 kPa – 106 kPa |
| Without transport packing | -5 °C – 45 °C | 10 % – 95 % | 70 kPa – 106 kPa |

10.2 Decontamination before shipment



CAUTION! Use of a contaminated device may result in personal injury and damage to the device.

- ▶ Clean and decontaminate the device in accordance with the cleaning instructions before shipping or storage.

Hazardous substances are:

- solutions presenting a hazard to health
 - potentially infectious agents
 - organic solvents and reagents
 - radioactive substances
 - proteins presenting a hazard to health
 - DNA
1. Please note the information in the document "Decontamination certificate for product returns".
 It is available as a PDF document on our website
www.eppendorf.com/decontamination.
 2. Enter the serial number of the device in the decontamination certificate.
 3. Enclose the completed decontamination certificate for returned goods with the device.
 4. Send the device to Eppendorf AG or an authorized service center.

10.3 Disposal

The product must be disposed of in accordance with the relevant legal provisions.

Information on the disposal of electrical and electronic devices in the European Community:

Within the European Community, the disposal of electrical devices is regulated by national regulations based on EU Directive 2012/19/EU pertaining to waste electrical and electronic equipment (WEEE).

According to these regulations, any devices supplied after August 13, 2005, in the business-to-business sphere, to which this product is assigned, may no longer be disposed of in municipal or domestic waste. They are marked with the following symbol to indicate this:



As the disposal regulations may differ from one country to another within the EU, please contact your supplier for more information.

10.4 Shipping the device



WARNING! Risk of personal injury due to contamination.

People may become contaminated if you store or ship a contaminated device.

- ▶ Clean and decontaminate the device before shipping or storage.



NOTICE! Risk of damage due to improper packaging.

Eppendorf AG is not liable for any damage caused by improper packaging.

- ▶ Only store and transport the device in its original packaging.
- ▶ If you do not have the original packaging, request original packing from Eppendorf AG.

Prerequisites

- The device has been cleaned and decontaminated.
 - The original packaging is available.
1. Download the "Decontamination declaration for product returns" from www.eppendorf.com.
 2. Complete the decontamination declaration.
 3. Pack the device.
 4. Put the decontamination declaration into the packaging.
Deliveries shipped without a decontamination certificate will not be processed.
 5. Send the device to Eppendorf AG or an authorized service center.

Qualified

Evaluate Your Manual

Give us your feedback.
www.eppendorf.com/manualfeedback

Your local distributor: www.eppendorf.com/contact
Eppendorf AG · Barkhausenweg 1 · 22339 Hamburg · Germany
eppendorf@eppendorf.com · www.eppendorf.com

Installation guide

VisioNize® pipette manager

English (EN)

This document is a supplement to the operating manual for the "VisioNize pipette manager" control panel and does not replace it. Read the control panel operating manual as well. The current version can be found on the Internet under www.eppendorf.com.

1 Other applicable documents

The following documents also apply:

- "VisioNize pipette manager" operating manual
- "Eppendorf Xplorer connect " installation guide
- "Eppendorf Xplorer/Xplorer plus" operating manual

2 Checking the delivery package



- ▶ Check that the delivery is complete.
- ▶ Check all parts for transport damage.
- ▶ To safely transport and store the device, retain the transport box and packing material.

| Quantity | Description |
|----------|--|
| 1 | "VisioNize pipette manager" control panel |
| 1 | Mains/power supply device |
| 4 | Power plug adapter |
| 1 | Micro USB cable |
| 1 | Installation guide "VisioNize pipette manager" |

3 Product description
3.1 Product overview

3.2 Mains/power supply device and power plug adapter

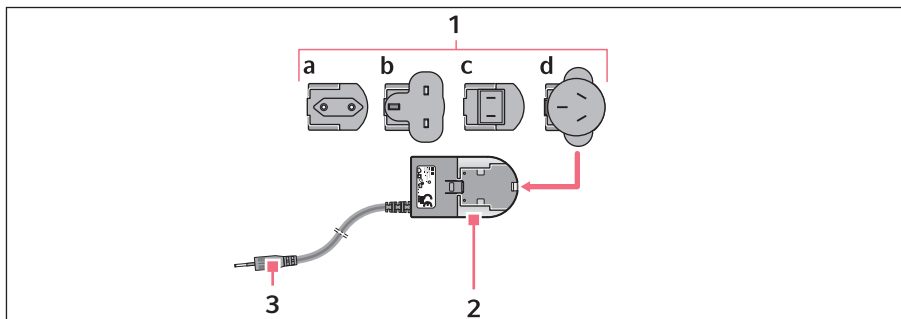


Fig. 1: Mains/power supply device with adapters

1 Power plug adapters

- a Europe
- b Great Britain
- c USA
- d Australia

3 Charging plug


2 Mains/power supply device

3.3 Features

The "VisioNize pipette manager" control panel is designed for wireless communication with Eppendorf electronic dispensers. The dispensers must be equipped with a radio module for this purpose. Communication between the control panel and the dispensers takes place in an independent radio network.

Using the "VisioNize pipette manager" software it is possible to set up and manage up to 30 dispensers, transfer parameters, combine pipettes into sets, and reserve pipettes. The *Liquid Manager* menu contains a selection of predefined liquid types that are optimized for volatile, foaming and viscous liquids.

3.3.1 Supported dispensers

-  The pipette must be equipped with a suitable radio module.

| Dispenser | On/off switch | Interface |
|------------------------|---------------|-----------|
| Eppendorf Xplorer | On/Off key | USB |
| Eppendorf Xplorer plus | On/Off key | USB |

4 Installation

4.1 Connecting the control panel

1. Connect the mains/power supply device to the control panel and the mains/power line. The "VisioNize pipette manager" software starts.
2. Enter the login data.


4.2 Connecting the control panel and the pipette

Prerequisites

- The radio module is inserted in the pipette.
1. Open the rubber cover of the USB interface on the pipette using the pin.
 2. Use the USB cable to connect the pipette and the control panel.
The pipette software can be updated.

4.3 Updating the software


The current version of the "VisioNize pipette manager" software is installed on the control panel. A current version of the pipette software is supplied.

-  Updating the software deletes all the settings stored on the pipette.

4.3.1 Updating the pipette software

Prerequisites

- The pipette's rechargeable battery is fully charged.
- The control panel and the pipette are connected with the USB cable.

-  Do not switch off the control panel and the pipette during the software update.

1. Select the *Settings > System Settings > Update Software > Update Pipette* menu on the control panel.
2. Tap the *Start Update* button.
3. Wait until the update is complete.
4. Disconnect the cable.
5. Reinsert the USB cover.

Installation guide

VisioNize® pipette manager

English (EN)

4.3.2 Checking the software update

1. Set the selection dial on the pipette to **Opt.**

The submenu has been expanded to include the *Wi-Fi* entry.

The radio link symbol is shown on the pipette display at the bottom.

If a radio link is active, the display's design changes to light blue.

If the radio link is inactive, the symbol is crossed out and the display's design remains dark blue.

4.4 Performing further steps

1. Download the VisioNize pipette manager operating manual.
2. Register the pipette on the control panel (*Pair New Pipette*).
3. Use a single pipette or create a pipette set.



A software overview and a description of the operating steps can be found in the operating manual for the "VisioNize pipette manager" control panel. A current version of the operating manual can be downloaded as a PDF from our webpage www.eppendorf.com/manuals.

Your local distributor: www.eppendorf.com/contact

Eppendorf AG · Barkhausenweg 1 · 22339 Hamburg · Germany

eppendorf@eppendorf.com · www.eppendorf.com

Regulatory Information

VisioNize® pipette manager

English (EN)

1 Regulatory information

Regulatory information, certification, and compliance marks specific to "VisioNize pipette manager" are available on the internet under www.eppendorf.com/manuals.

2 EU compliance statement

Hereby, Eppendorf AG declares that the radio equipment type "VisioNize pipette manager" is in compliance with Directive 2014/53/EU.

The full text of the EU declaration of conformity is available on the internet under www.eppendorf.com/manuals.

3 FCC compliance statement

This device complies with Part 15 of the FCC Rules.

Operation is subject to the following two conditions:

- this device may not cause harmful interference, and
- this device must accept any interference received, including interference that may cause undesired operation.



Changes or modifications made to this equipment not expressly approved by Eppendorf AG may void the FCC authorization to operate this equipment.



This equipment has been tested and found to comply with the limits for a Class B digital device, pursuant to part 15 of the FCC Rules. These limits are designed to provide reasonable protection against harmful interference in a residential installation. This equipment generates, uses and can radiate radio frequency energy and, if not installed and used in accordance with the instructions, may cause harmful interference to radio communications. However, there is no guarantee that interference will not occur in a particular installation. If this equipment does cause harmful interference to radio or television reception, which can be determined by turning the equipment off and on, the user is encouraged to try to correct the interference by one or more of the following measures:

- Reorient or relocate the receiving antenna.
- Increase the separation between the equipment and receiver.
- Connect the equipment into an outlet on a circuit different from that to which the receiver is connected.
- Consult the dealer or an experienced radio/TV technician for help.

Regulatory Information

VisioNize® pipette manager
English (EN)

4 ISED Canada compliance statement

This device complies with ISED Canada license-exempt RSS standard(s).

Operation is subject to the following two conditions:

- this device may not cause harmful interference, and
- this device must accept any interference received, including interference that may cause undesired operation.

Le présent appareil est conforme aux CNR d'ISDE Canada applicables aux appareils radio exempts de licence.

L'exploitation est autorisée aux deux conditions suivantes :

- l'appareil ne doit pas produire de brouillage, et
- l'appareil doit accepter tout brouillage radioélectrique subi, même si le brouillage est susceptible d'en compromettre le fonctionnement.

5 Radiofrequency radiation exposure Information

This equipment complies with FCC and ISED radiation exposure limits set forth for an uncontrolled environment. This equipment should be installed and operated with a minimum distance of 20 cm between the radiator and any part of your body.

6 Technical data

6.1 Radio module

| | |
|--------------------|----------------------|
| Transmitting power | 0.063 W |
| Power level | 18 dBm |
| Frequency band | 2412 Hz – 2462 Hz |
| Radio channel | 1 – 11 (1 is preset) |
| Operating mode | Access point |
| Access points | 1 |
| Approval | FCC, IC |
| Standard | 802.11 b/g/n |

Your local distributor: www.eppendorf.com/contact

Eppendorf AG · Barkhausenweg 1 · 22339 Hamburg · Germany
eppendorf@eppendorf.com · www.eppendorf.com