

# 磁吸充电宝移动电源(P22说明书设计文件)

[illegible]

**Magnetic**  
**Wireless Power Bank**  
Model: P22

# User Manual

## Specifications

- Magnetic Wireless Power Bank
- Capacity: 5000mAh 7.7V/38.5Wh
- USB-C Input: 5V=3A 9V=3A(PD 27W)
- USB-C Output: 5V~3A 9V~3A 12V~2.5A 15V~2A(PD 30W)
- Magnetic Wireless Output: 15W/10W/7.5W/5W

## Compatible Devices

- For Mobile Phone

iPhone 16 Series/iPhone 15 Series/iPhone 14 Series/iPhone 13 Series/iPhone 12 Series  
Compatible with other wireless charging phones that support Qi protocol

**Please use a magnetic case to charge your phone**

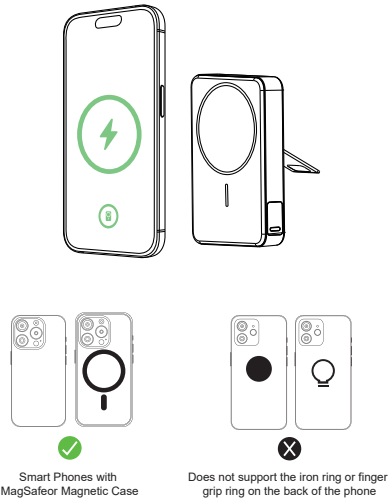
AirPods Pro 2nd Generation/AirPods 4/AirPods 3/  
AirPods Pro MagSafe/AirPods Pro/AirPods 2nd Generation

and all devices that support C port charging

## Notice

If the phone itself does not support the magnetic user, please use the magnetic case or wear a magnetic ring applicable (please note that the magnetic case and magnetic ring must be aligned with the charging receiver of the phone, other wise it will not be able to charge the phone and the phone will be hot.)

### Mobile Power Product Indication

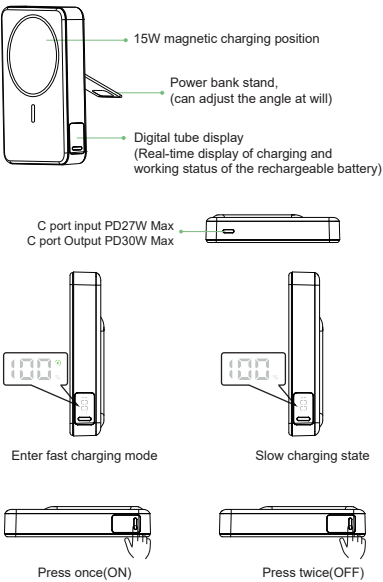


## Important Safety Instructions

- Make sure you to disconnect the device from power when cleaning.
- It is normal and safe to hear a humming noise when very close to the charger. It means that this wireless charger is adjusting it's temperature to achieve a more efficient charging speed.
- If your device can not be fully charged, this may due to high environmental temperature, please recharge after the temperature is lowered. Our charger has temperature control to safeguard your device when charging.
- Do not store device in high-temperature environment, including heat caused by intense sunlight or other forms of heat.
- Do not place device in fire or other excessively hot environments. Exposure to fire or temperature above 212°F(100C) may cause explosion.
- Do not use the wireless charger in excess of its output rating. Over loading outputs above rating may result in a risk of fire or injury to persons.
- Do not expose the wireless charger to rain or snow.
- Do not modify, repair or disassemble the unity, if so, please contact the manufacturer. Switch off the wireless charger when not in use. The wireless charger will automatically switch off when disconnected from its wall charger.

## FCC Warning

This device complies with part 15 of the FCC Rules. Operation is subject to the following two conditions: (1) This device may not cause harmful interference, and (2) this device must accept any interference received, including interference that may cause undesired operation.



Any Changes or modifications not expressly approved by the party responsible for compliance could void the user's authority to operate the equipment.

This equipment has been tested and found to comply with the limits for a Class B digital device, pursuant to part 15 of the FCC Rules. These limits are designed to provide reasonable protection against harmful interference in a residential installation. This equipment generates uses and can radiate radio frequency energy and, if not installed and used in accordance with the instructions, may cause harmful interference to radio communications. However, there is no guarantee that interference will not occur in a particular installation. If this equipment does cause harmful

Interference to radio or television reception, which can be determined by turning the equipment off and on, the user is encouraged to try to correct the interference by one or more of the following measures:

1. Reorient or relocate the receiving antenna.
2. Increase the separation between the equipment and receiver.
3. Connect the equipment into an outlet on a circuit different from that to which the receiver is connected.
4. Consult the dealer or an experienced radio/TV technician for help.

## FCC RF exposure statement

The device has been evaluated to meet general RF exposure requirement. The device can be used in portable exposure condition without restriction.

