

 Action Intelligent Co.,LTD	Product Definition	Model No.	RCX10002/37MVB
		Pages	1 of 23
		Revision	1.0

Product Definition

Rev	Remark	Date	Apply for
1.0		2024/12/30	

 Action Intelligent Co.,LTD	Product Definition	Model No.	RCX10002/37MVB
		Pages	2 of 23
		Revision	1.0

CONTENTS

1. Electrical Spec.

- 1. Content 3/22
- 2. Feature 3/22~5/22
- 3. Block Diagram 6/22
- 4. I/O 7/22
- 5. Wire Harness 7/22~8/22

2. Structure Spec.

- 1. ID diagram 10/22
- 2. External dimension diagram 11/22
- 3. Exploded view 12/22
- 4. Appearance standards 13/22~15/22

3. Packaging Spec.

- 1. Label specification for Unit, Gift Box, Carton 16/22
- 2. Label location for product 17/22
- 3. Gift box specification 18/22
- 4. Carton specification 19/22
- 5. Label location in Gift box & Carton 20/22
- 6. Packing method 21/22
- 7. Customer loading&capacity 22/22

 Action Intelligent Co.,LTD	Product Definition	Model No.	RCX10002/37MVB
		Pages	3 of 23
		Revision	1.0

1. Electrical Spec.

1. Content

1-1 Action model name:RCX10002/37MVB

Customer model name:Motor 4HD-1

1-2 AM(with HD radio)/FM(with RDS/HD radio)

/AUX IN/USB1/USB2/BT/Sirius XM control box

1-3 Amplifier output:4*25W

2. Feature

2.1 AM/FM(with RDS)

2.1.1 AM Frequency: Worldwide AM Band support 520kHz~1710kHz

2.1.2 FM Frequency: Worldwide FM Band support 76.0MHz~108.0MHz

2.1.3 Radio Band: AM1,AM2,FM1,FM2,FM3.Total 5 Radio Band

2.1.4 Preset Station: 30 Preset Station (6 preset station per Radio Band)

2.1.5 Auto Seek/Manual Seek: Yes

2.1.6 Local/Distant: Yes

2.1.7 Selected Region & Frequency Range:

Region	AM	Interval	FM	Interval
USA	530~1710kHz	10kHz	87.5~107.9MHz	200kHz
EUROPE	522~1602kHz	9kHz	87.5~108.0MHz	50kHz
AUSTRALIA	522~1620kHz	9kHz	87.5~108.0MHz	100kHz
JAPAN	522~1620kHz	9kHz	76.0~90.0MHz	100kHz
RUSSIA	522~1620kHz	9kHz	87.5~108.0MHz	50kHz

2.1.8 Power Antenna: Max. output 12Vdc @ 500mA

2.1.9 Radio Antenna: Mouse-tail antenna hole ϕ 9.4mm

 Action Intelligent Co.,LTD	Product Definition	Model No.	RCX10002/37MVB
		Pages	4 of 23
		Revision	1.0

2.1.10 FM Section & AM Section:

FM Section	Usable Sensitivity	≤ 15 dBuV
	Selectivity	Over 75dB (<u>+</u> 400kHz)
	Signal to Noise Ratio	60 dB (Stereo), 60dB (Mono)
	Harmonic Distortion @ 1 kHz	0.8% (Stereo), 0.5% (Mono)
	Separation	32 dB @ 1kHz
	Frequency Response (-6dB)	30Hz - 15,000Hz
AM Section	Usable Sensitivity (S/N: 20dB)	≤ 28 dBuV
	Selectivity	Over 35dB (<u>+</u> 10kHz)
	Signal to Noise Ratio	45 dB
	Harmonic Distortion @ 1 kHz	1%
	Frequency Response (-6dB)	50Hz - 1,800Hz

2.2 AUX IN

2.2.1 AUX Input: 600mV Normal

2.2.2 AUX Input I/O: 3.5mm Jack Pigtail

AUX IN Section	Signal to Noise Ratio	60 dB
	SEPARATION @600mV INPUT	40 dB
	Harmonic Distortion @ 1 kHz	1%
	Frequency Response (-3dB)	20Hz - 20,000Hz

2.3 USB1/USB2

2.3.1 USB Standard: USB 2.0 Full/High Speed

2.3.2 File System: FAT16/32

2.3.3 Audio Decoder: MP3/WMA/PCM

2.3.4 Apple device 5V/2.1A charging.

2.3.5 Apple device media review and playback.

2.4 Bluetooth

 Action Intelligent Co.,LTD	Product Definition	Model No.	RCX10002/37MVB
		Pages	5 of 23
		Revision	1.0

2.4.1 Bluetooth Standard: Ver5.0/Ver4.2/Ver 2.1+EDR

2.4.2 Profile: A2DP/AV RCP/HFP/HSP/OPP/HID/SPP

2.4.3 Audio Decoder: MP3/WMA/PCM

2.5 Sirius XM

Sirius XM Section	Signal to Noise Ratio	60 dB
	SEPARATION	40 dB
	Harmonic Distortion @ 1 kHz	1%
	Frequency Response (-3dB)	20Hz - 10,000Hz

2.6 AUDIO

2.6.1 Output Power (@ 14.4V @ 4 Ohm @ 20% THD): 4x25W RMS

2.6.2 Output Power (@ 14.4V @ 4 Ohm) 4x40W Max. Power

2.6.3 Speaker Impedance: 4 - 8 Ohm

2.6.4 Audio Control: VOL/BASS/MID/TRE/BAL/FAD

2.7 GENERAL

2.7.1 Radio Body Dimension (W/H/D): 3.96" (100.58mm) x 1.99" (50.55mm) x 4.13" (104.90mm)

2.7.2 12H/24H Clock: Yes

2.7.3 Non-Volatile Memory: Yes

2.7.4 Support Color Display: Yes, software locked to Black & White (Warm White)

2.7.5 Power Antenna Output: Max. 12Vdc @ 500mA

2.7.6 Remote Amplifier Turn ON: Max. 12Vdc @ 500mA

2.7.7 Reverse Battery Protection Built-in: Yes (5 min.)

2.7.80 peration Voltage: 14.4Vdc (9.0Vdc ~ 16.0Vdc)

2.7.9 High Operation Voltage: 18.0Vdc (1hr)

2.7.10 Overstress Operation Voltage: 24.0Vdc (5 min.)

2.7.11 Operation Temperature: -10°C ~ +60°C



Action Intelligent Co.,LTD

Product Definition

Model No.

RCX10002/37MVB

Pages

6 of 23

Revision

1.0

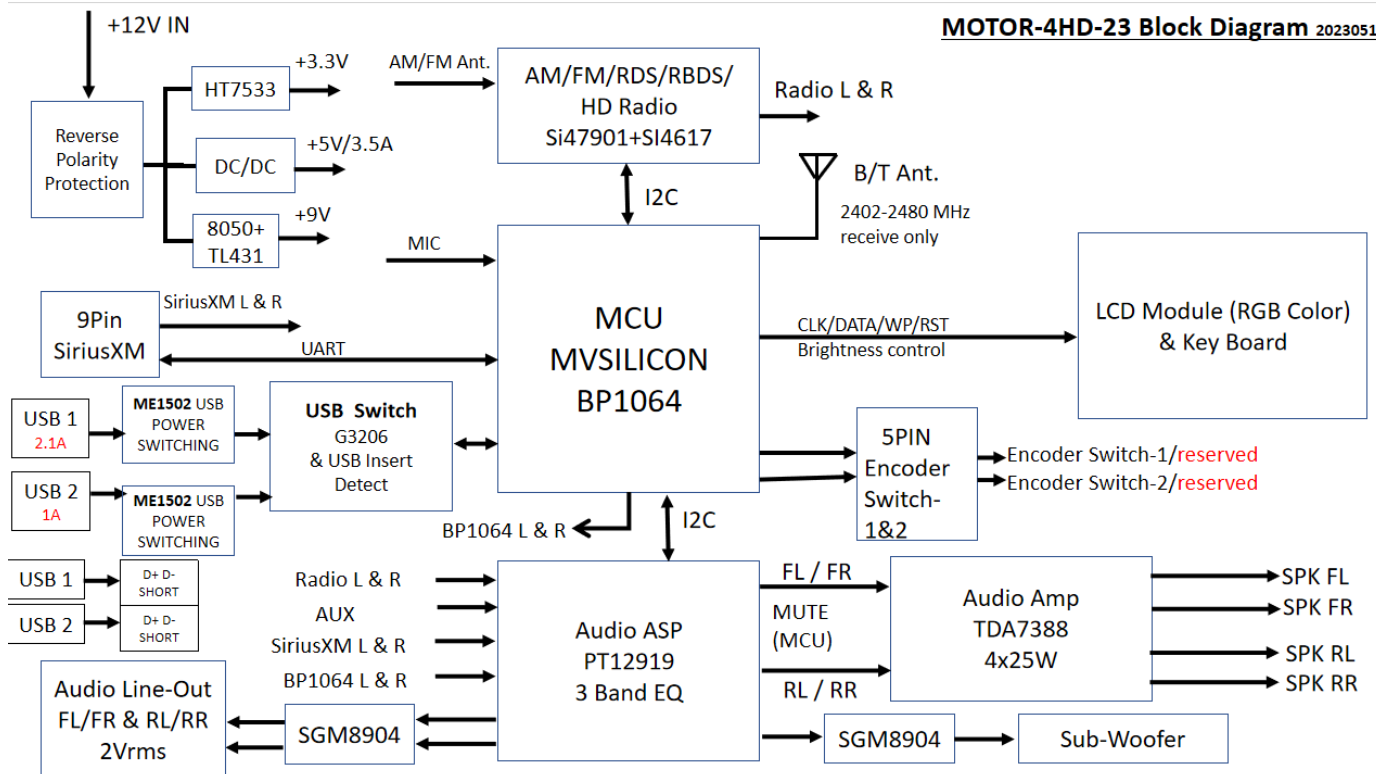
2.7.12 Power Consumption: Max.15A

2.7.13 Dark Current: <3.5mA

2.7.14 Product Certification: FCC-SDOC

3. Block Diagram

MOTOR-4HD-23 Block Diagram 20230519



 Action Intelligent Co.,LTD	Product Definition	Model No.	RCX10002/37MVB
		Pages	7 of 23
		Revision	1.0

4. I/O

+12V Ignition/ACC Ground Power Antenna Remote/Amp Turn ON Lead Front Speaker L/R Rear Speaker L/R	16Pin On-Board Connector
AM/FM Antenna Input	AM/FM Jack Pigtail
AUXInput/Line out (front)/ Line out (rear)	AUX Line out Jack Pigtail
Display Connector	12Pin Connector
Encoder Switch Connector	RJ11 On-Board Connector (Left & Right)
USB	2 USB Type A FEMALE
Sirius XM	10 pin DIN

5. Wire Harness

Main Wiring Harness	16Pin to 13Pin ISO Connector with Auto Blade Fuse	
Power Wiring Harness	Yellow	+12V
	Blue	Power Antenna
	Red	Ignition/ACC
	Black	Ground
	Blue/White	Amplifier Turn ON
	Purple	Rear Right +
	Purple/Black	Rear Right -
	Grey	Front Right +

 Action Intelligent Co.,LTD	Product Definition	Model No.	RCX10002/37MVB
		Pages	8 of 23
		Revision	1.0

Speaker Wiring Harness	Grey/Black	Front Right -
	White	Front Left +
	White/Black	Front Left -
	Green	Rear Left +
	Green/Black	Rear Left -
AM/FM Antenna	AM/FM Jack Pigtail	
	Centre	AM/FM Antenna Signal
	Shell	GND
Encoder Switch Connector	RJ11 On-Board Connector (Left & Right)	
	PIN1	GND
	PIN2	Vol1
	PIN3	Vol2
	PIN4	GND
KEY Wiring Connector	12Pin to 12Pin Wiring Connector	
	PIN1	GND
	PIN2	KEY
	PIN3	KEY+5V
	PIN4	LED+5V
	PIN5	NC
	PIN6	LCD_CE
	PIN7	LCD_SCL
	PIN8	LCD_SDA
	PIN9	NC
	PIN10	GND
	PIN11	GND
	PIN12	GND

 Action Intelligent Co.,LTD	Product Definition	Model No.	RCX10002/37MVB
		Pages	9 of 23
		Revision	1.0

Compliance with FCC Rules

This device complies with Part 15 of the FCC rules. Operation is subjected to the following two conditions: (1) this device may not cause harmful interference, and (2) this device must accept any interference received, including interference that may cause undesired operation.

Changes or modifications not expressly approved by the party responsible for compliance could void your authority to operate the equipment.

This equipment complies with FCC radiation exposure limits set forth for an uncontrolled environment.

The distance between user and products should be no less than 20cm.

This equipment has been tested and found to comply with the limits for a Class B digital device, pursuant to Part 15 of the FCC Rules. These limits are designed to provide reasonable protection against harmful interference in a residential installation. This equipment generates, uses and can radiate radio frequency energy and, if not installed and used in accordance with the instructions, may cause harmful interference to radio communications. However, there is no guarantee that interference will not occur in a particular installation. If this equipment does cause harmful interference to radio or television reception, which can be determined by turning the equipment off and on, the user is encouraged to try to correct the interference by one or more of the following measures:

- Reorient or relocate the receiving antenna.
- Increase the separation between the equipment and receiver.
- Connect the equipment into an outlet on a circuit different from that to which the receiver is connected.
- Consult the dealer or an experienced radio/TV technician for help.

<div> Action Intelligent Co.,LTD</div>	Product Definition	Model No.	RCX10002/37MVB
		Pages	10 of 23
		Revision	1.0

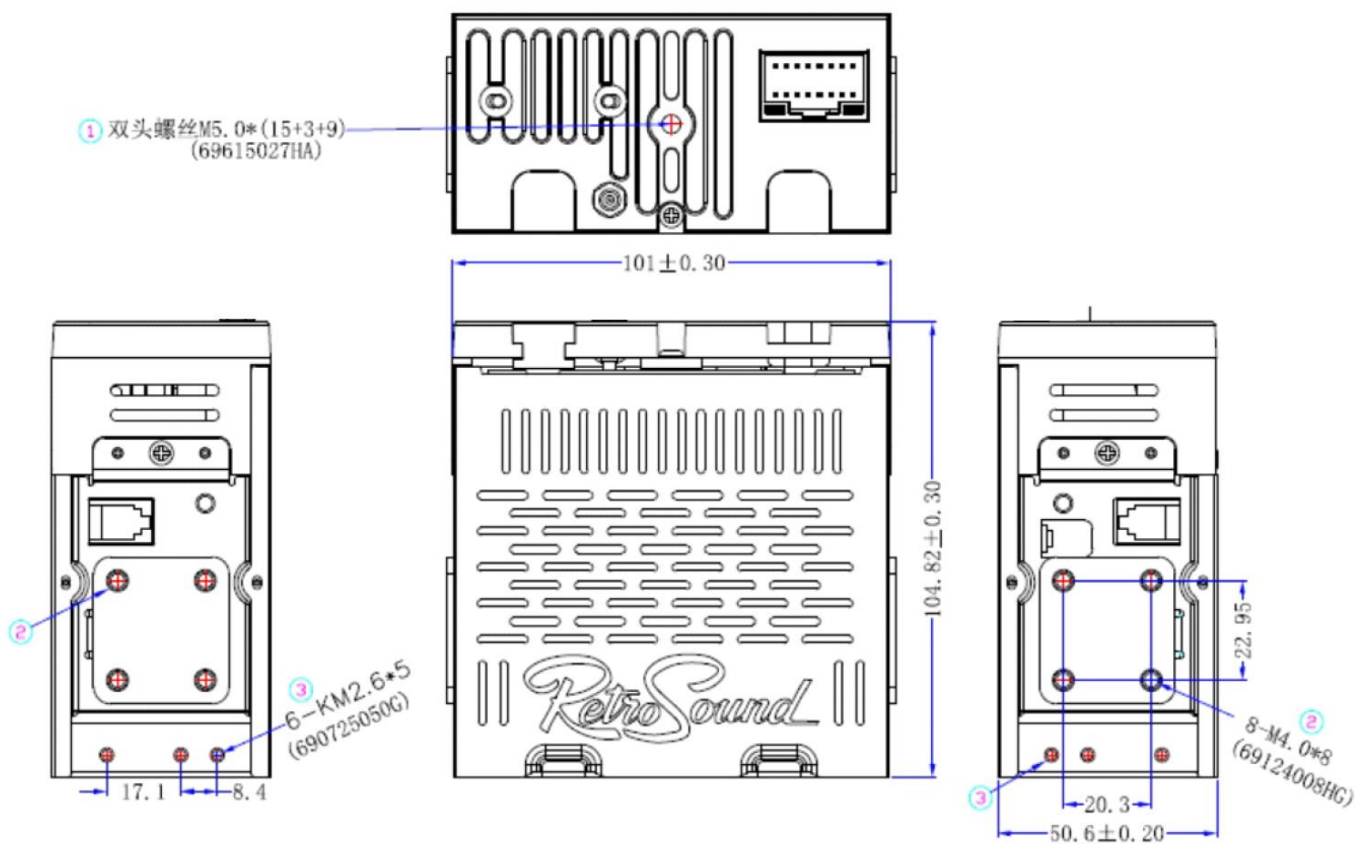
2. Structure Spec.

1. ID



 Action Intelligent Co.,LTD	Product Definition	Model No.	RCX10002/37MVB
		Pages	11 of 23
		Revision	1.0

2. External dimension diagram



Assembly focus:

- 1) The M5 screw (69615027HA) in the accessory package marked as 1 in the picture needs to be locked
- 2) The M4 screw (69124008HG) in the accessory package labeled as 2 in the picture needs to be locked



Action Intelligent Co.,LTD

Product Definition

Model No.

RCX10002/37MVB

Pages

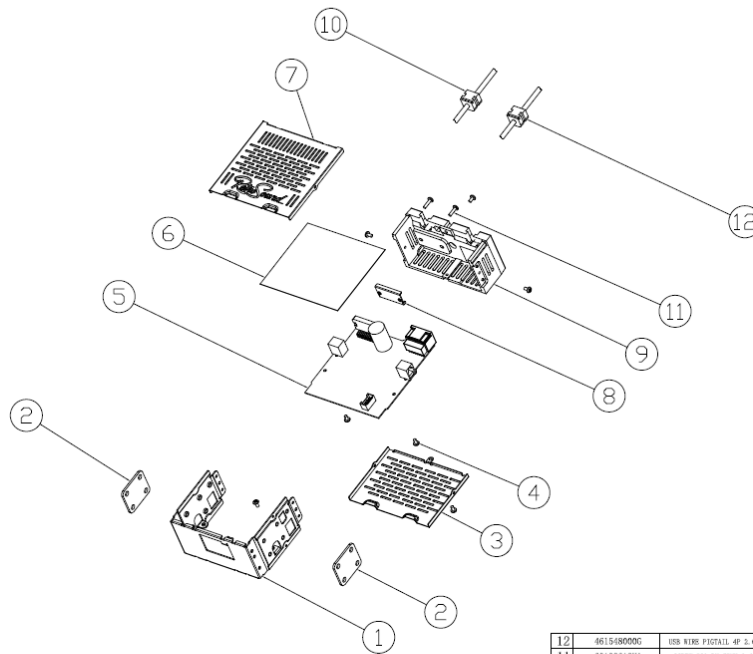
12 of 23

Revision

1.0

3) The M2.6 screw (69072500G) in the accessory package marked as 3 in the picture needs to be tested and locked

3. Explosion diagram



NO.	PART NO.	DESCRIPTION	QTY
12	6615480000	USB WIRE PISTAIL 4P 2.0M L480W RCX00002/37MVB TANKING	1
11	691326125A	SCREW ISO HEX-ZINC 2.6*10MM (HARDEN+ ZINK PLATE)	2
10	6611270000	LINE-OUT+ANT+MIC-AUXI WIRE PISTAIL 1.580M RCX00002/37MVB TANKING	1
9	8738501A0G	BACK_COVER_MOTOR_3 101.4456*436.3MM AL RCX00002/37MVB RG	1
8	8738301A0G	PC BRACKET 31.943*8.8 SICC TPO.8 RCX00001 RG	1
7	8738201A0G	MOVEMENT_TOP_COVER 100.6403*40MM SPCC TPO.6 B-COAT BLACK RCX00002/37MVB RG	1
6	603811000G	PROTECTION CLOTH 97*40*0.4 1MM PC+5Nanomet BK RCX00001/37MVB RG	1
5	023861600G	DIP MAIN PCB ASS Y RCX00002/37MVB V1.0	1
4	691306055A	SCREW ISO 8H+N 2.6*10MM (HARDEN+ ZINK PLATE)	7
3	8738301A0G	MOVEMENT_BOTTOM_COVER 100.6475*7MM SPCC TPO.6 B-COAT BLACK RCX00001/37MVB RG	1
2	643805100G	ELIGIT RUBBER PAD 33*30*2.0MM RUBBER BK RCX00001/37MVB RG	2
1	8738401A0G	MOVEMENT_MAIN_BODY 99.5*78*43.3MM SPCC TPO.6 B-COAT BLACK RCX00001/37MVB RG	1

NO.	PART NO.	DESCRIPTION	QTY
DRAWN BY		APPROVED BY	
MAP SHEET		DRAWING NAME	MOTOR-2
UNIT	MM	NAME	通海路
■ 亿智能 (深圳) 有限公司			45° THIRD ANGLE

 Action Intelligent Co.,LTD	Product Definition	Model No.	RCX10002/37MVB
		Pages	13 of 23
		Revision	1.0

4. Appearance standards

(1) Definition of appearance category

The surface appearance of the product is divided into four categories: "A", "B", "C" and "D", and the acceptance criteria are determined by the specified surface category. .

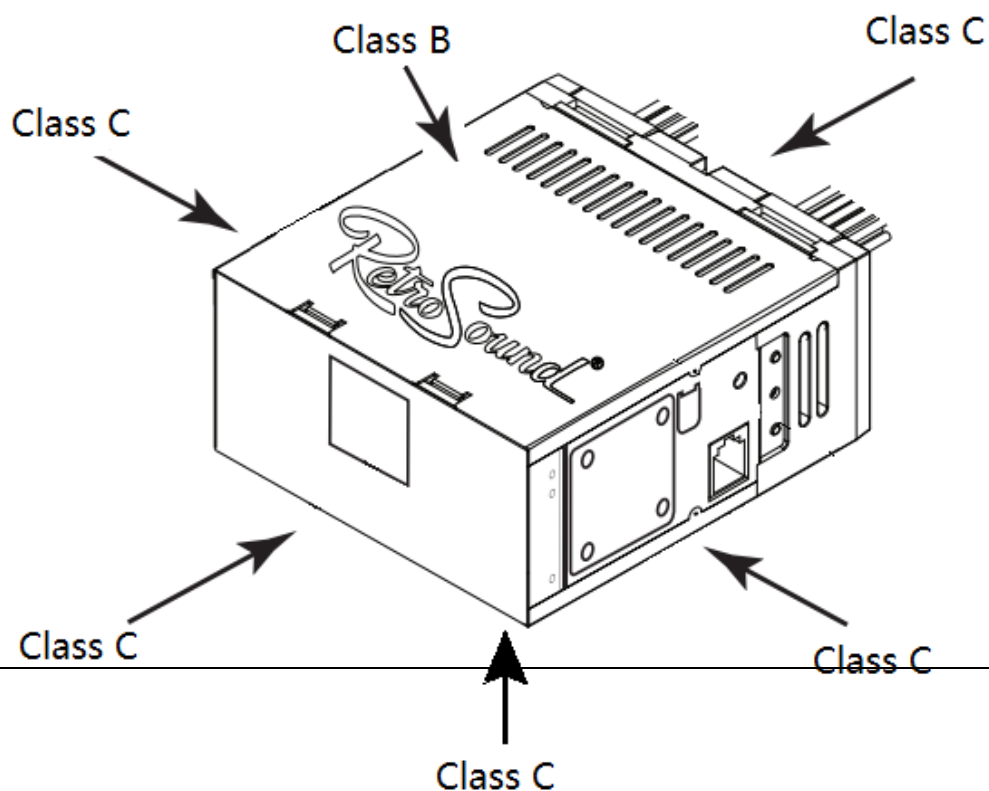
Zone A (A-level surface): The main exposed surface that can be directly observed at close range during use.

B zone (B-level surface): a secondary exposed surface that cannot be directly observed during use.

C-zone (C-level surface): a surface that is not visible during use.

D-zone (D-level surface): Non appearance surface, but must comply with protection and functional requirements. .

(2) Classification of appearance categories



 Action Intelligent Co.,LTD	Product Definition	Model No.	RCX10002/37MVB
		Pages	14 of 23
		Revision	1.0

(3) Inspection Criteria for Printing

1. Distance: The distance between the human eye and the surface of the object being measured is:
 - A. B-side 18 inches (460mm).
 - C. D-face 24 inches (610mm).
2. Time: The maximum observation time for sides A and B is 2 seconds per square inch, and 20 seconds per side (usually 5 seconds for single-sided observation). The inspection time can be extended or shortened according to the complexity of the components. C. The maximum observation time for D is 1 second per square inch (usually 5 seconds for single-sided observation).
3. Position: The inspector holds the workpiece horizontally at 30 degrees and rotates it 30 degrees left/right along the vertical axis. For components with multiple faces, each face needs to be inspected separately.
4. Brightness: Fluorescent lamps (daylight type) require 600~800 Lux for display surface illumination.
5. Cotton gloves or finger cots should be worn during homework.

(4) Standards

4.1 Surface scratch standard

4.1.1 Abrasion or Bruise Marks

There should be no noticeable wear/abrasion on the A side.

The acceptance conditions for wear/abrasion on surfaces B and C are based on the acceptance/limit samples.

D surface wear/abrasion is acceptable.

4.1.2 Burr

- 1: Burrs should be within the specification drawing range or less than 10% of

 Action Intelligent Co.,LTD	Product Definition	Model No.	RCX10002/37MVB
		Pages	15 of 23
		Revision	1.0

the material thickness.

2: Bare hand operation is not acceptable for burrs that may harm the hands.

4.1.3 Dent Mark :

A side	B side	C side	D side
0	$0.5\text{mm} \times 1\text{mm} \leq 2$	$1\text{mm} \times 1\text{mm} \leq 3$	N/A

4.1.4 Scratches :

Item	A side	B side	C side	D side
Number	≤ 1	≤ 2	≤ 3	N/A
Length	$\leq 5 \text{ mm}$	$\leq 10 \text{ mm}$	$\leq 15 \text{ mm}$	N/A
Wide	$\leq 0.05 \text{ mm}$	$\leq 0.3 \text{ mm}$	$\leq 0.5 \text{ mm}$	N/A

The distance between scratches must be greater than 20mm

4.2 Electroplating and spraying standards

4.2.1 Electroplating and spraying inspection standards

All coatings must meet the color requirements defined by the sample.

4.2.2 All coatings must undergo adhesion testing according to the following methods

Tape testing:

- Stick a 3M tape tightly onto the surface; New tape must be used for each test.
- Tear off one end of the tape at a 30 degree angle.
- Quickly peel off the tape.
- Observe whether there are paint particles and peeling on the tape and surface.
- If the coating on the surface of the component is damaged, the adhesion test

result

is judged as NG.

4.3 Granular acceptable

4.3.1 Less than 0.4mm is acceptable

4.3.2 $\leq 0.7\text{mm}$ @ 3 pcs, distance $> 15\text{mm}$

 Action Intelligent Co.,LTD	Product Definition	Model No.	RCX10002/37MVB
		Pages	16 of 23
		Revision	1.0

3. Packaging Spec.

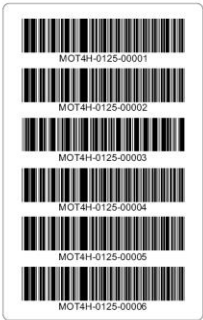
1. LABEL SPECIFICATION FOR UNIT, GB, CARTON

1. SERIAL NUMBER BARCODE LABEL 45*10MM
(P/N: 60-25-07900G)



Blank Label : 602507900G (45x10mm)
Format : Code 39
Position : Unit & GB

2. CARTON S/N BARCODE LABEL 95*60MM
(P/N: 60-25-01600G)



Blank Label : 602501600G (95x60mm)
Format : Code 39
Position : Carton (x2pcs)

3. CARTON PO LABEL 65*30MM
(P/N: 60-25-01900G)



Format : PO Number
Position : Carton (x2pcs)
Label size : 65 x 30mm

4. QC PASSED LABEL 13*9MM
(P/N: 90-9R-00100G)



Position : Unit
Label size : 13 x 9mm

5. FCC ID LABEL 45*8MM
(P/N: 90-9R-00600G)



Position : Unit
Label size : 45 x 8mm

6. INSTRUCTION LABEL 30*10MM
(P/N: 90-9R-00700G)



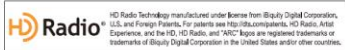
Position : Unit
Label size : 30 x 10mm

7. SiriusXM LABEL 30*8MM
(P/N: 90-9R-00400G)



Position : Unit
Label size : 30 x 8mm

8. HD RADIO NOTICE LABEL 80*12MM
(P/N: 90-9R-01100G)



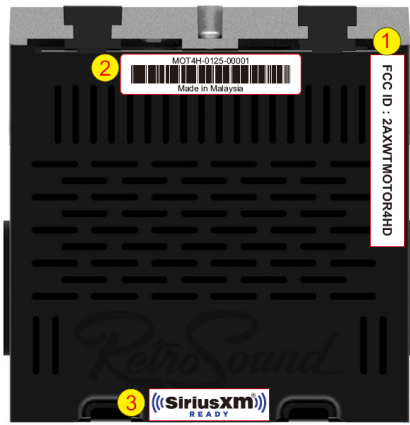
Position : Unit
Label size : 80 x 12mm

* P/S: - All graphics are simulated and are for illustrative purposes only.
- All specifications are tentative and subject to change without notice.

<div> Action Intelligent Co.,LTD</div>	<div>Product Definition</div>	Model No.	RCX10002/37MVB
		Pages	17 of 23
		Revision	1.0

2. LABEL LOCATION FOR PRODUCT

TOP VIEW



1. FCC ID LABEL 45*8MM
(P/N: 90-9R-00600G)



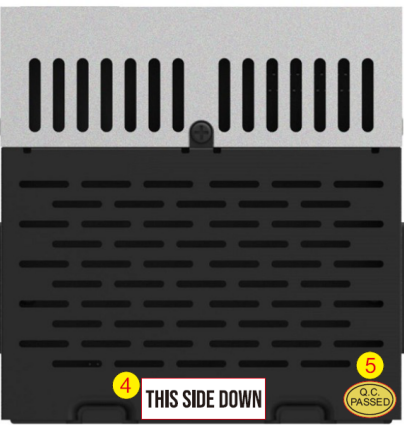
2. SERIAL NUMBER BARCODE LABEL 45*10MM
(P/N: 60-25-07900G)



3. SiriusXM LABEL 30*8MM
(P/N: 90-9R-00400G)



BOTTOM VIEW



4. INSTRUCTION LABEL 30*10MM
(P/N: 90-9R-00700G)



5. QC PASSED LABEL 13*9MM
(P/N: 90-9R-00100G)



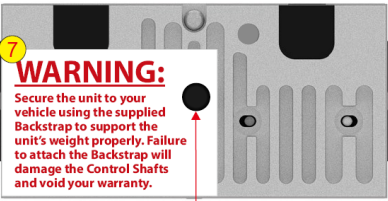
6. HD RADIO NOTICE LABEL 80*12MM
(P/N: 90-9R-01100G)



FRONT VIEW



BACK VIEW



7. BACKSTRAP WARNING SHEET 53*36MM
(P/N: 91-9R-20000G)



<div> Action Intelligent Co.,LTD</div>	<div>Product Definition</div>	Model No.	RCX10002/37MVB
		Pages	18 of 23
		Revision	1.0

3. GIFT BOX SPECIFICATION

GIFT BOX SPECIFICATION
(P/N: 93-9R-10200G)



SPECIFICATION:

MATERIAL : 270G DUPLEX + E FLUTE
PRINTING : 4 COLOR PRINTING(CMYK)
FINISHING : WITH STRONG GLUING + MATTE LAMINATION

EXTERNAL DIMENSIONS : 259 x 165 x 82mm

<div> Action Intelligent Co.,LTD</div>	Product Definition	Model No.	RCX10002/37MVB
		Pages	19 of 23
		Revision	1.0

4. CARTON SPECIFICATION

CARTON SPECIFICATION
(P/N: 94-9R-10200G)



1. BLANK LABEL
60*95MM
2. BLANK LABEL
65*30MM

SPECIFICATION :-

1. MATERIAL : A=A(140/110/90/110/140)
2. PRINTING : 1 COLOR PROCESS PRINTING - BLACK
3. QUALITY : NO DOUBLE IMAGE PRINTING, INK CONSISTENCY & NO OVERLAPING.
4. REMARK : COMPLETED 6 SETS/CTN
5. TOLERANCE : ±3MM



External Dimension: 520 (L) x 176(W) x 283(H)mm

<div> Action Intelligent Co.,LTD</div>	<div>Product Definition</div>	Model No.	RCX10002/37MVB
		Pages	20 of 23
		Revision	1.0

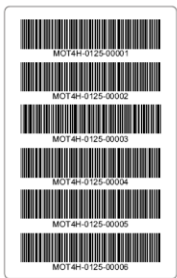
5. LABEL LOCATION IN GIFT BOX & CARTON

1. SERIAL NUMBER BARCODE LABEL 45*10MM
(P/N: 60-25-07900G)



Position: GB

2. CARTON S/N BARCODE LABEL 95*60MM
(P/N: 60-25-01600G)



Position: Carton Main View (x2pcs)

3. CARTON PO LABEL 65*30MM
(P/N: 60-25-01900G)



Position: Carton Side View (x2pcs)



GIFT BOX (P/N: 93-9R-10200G)

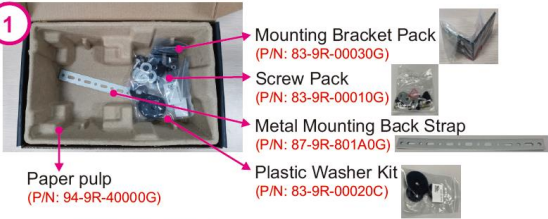


CARTON (P/N: 94-9R-10200G)

<div>  <p>Action Intelligent Co.,LTD</p> </div>	<div> <p>Product Definition</p> </div>	<div> <p>Model No.</p> </div>	<div> <p>RCX10002/37MVB</p> </div>
		<div> <p>Pages</p> </div>	<div> <p>21 of 23</p> </div>
		<div> <p>Revision</p> </div>	<div> <p>1.0</p> </div>

6. PACKING METHOD

1



Mounting Bracket Pack
(P/N: 83-9R-00030G)


Screw Pack
(P/N: 83-9R-00010G)

Metal Mounting Back Strap
(P/N: 87-9R-801A0G)

Paper pulp
(P/N: 94-9R-40000G)

Plastic Washer Kit
(P/N: 83-9R-00020C)

2

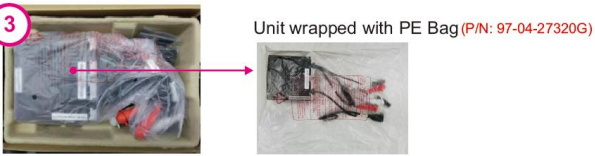


Power Harness(P/N: 45-9R-08600G)
+Speaker Harness (P/N: 45-9R-08610G)
wrapped with PE Bag (P/N: 97-04-08250G)
注：电源线跟喇叭线装入胶袋并用透明胶封口

Main Harness (P/N: 45-9R-16310G)
wrapped with PE Bag (P/N: 97-04-08250G)
注：主线装入胶袋并用透明胶封口

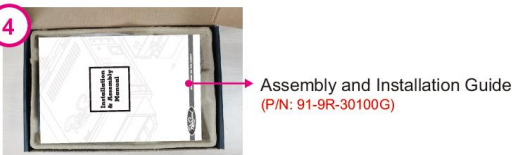
Micphone Harness (P/N: 46-1A-25200G)
wrapped with PE Bag

3



Unit wrapped with PE Bag (P/N: 97-04-27320G)

4



Assembly and Installation Guide
(P/N: 91-9R-30100G)

5



Wiring-Diagram
(P/N: 91-9R-30030G)

6



Stop Notice Card
(P/N: 91-9R-60000G)

7



CLOSED THE GIFT BOX COVER

SERIAL NUMBER BARCODE LABEL

8



6 SETS GIFT BOX PACK IN EACH CARTON

9



SEAL THE TOP AND BOTTOM CARTON
L/R SIDE WITH DUAL CARTON SEAL
PRINTED TAPE (P/N: 60-12-00230G)



Action Intelligent Co.,LTD

Product Definition

Model No.

RCX10002/37MVB

Pages

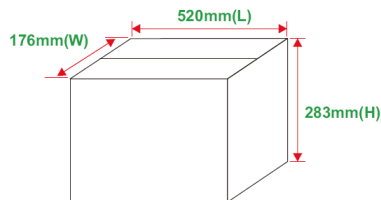
22 of 23

Revision

1.0

7. CUSTOMER LOADING CAPACITY

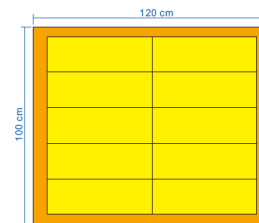
Customer Loading Capacity



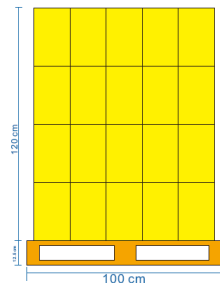
Carton Quantity = 6 sets
Carton Dimension (external) = 520(L) x 176(W) x 283(H)mm
N.W = 13.9 LBS/ 6.3 KGS
G.W = 15.0 LBS/ 6.8 KGS

Pallet Size:

Top View



Side View



Pallet size: 1200*1000*125mm

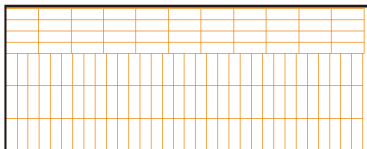
Quantity Per layers: 10 Cartons

Stacking Layer: 4 Layers

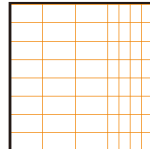
20' Container Loading Quantity
= (9x10x4) cartons x 6 sets = 2160 sets

40' Container Loading Quantity
= (20x10x4) cartons x 6 sets = 4800 sets

20' Container
Top View

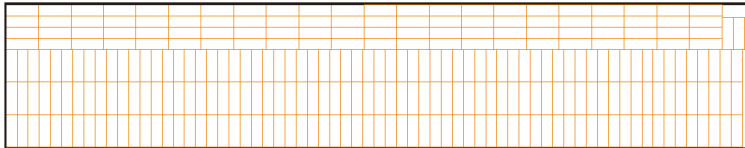


Front View

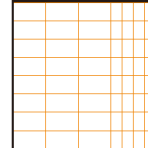


Stacking Layer: 8 Layers

40' Container
Top View



Front View



20' Container (without pallets)

Loading Quantity:

$$= (L32 \times W3 \times H8) + (L11 \times W4 \times H8) \\ = 1,120 \text{ cartons} \times 6 \text{ sets} \\ = 6,720 \text{ sets}$$

40' Container (without pallets)

Loading Quantity:

$$= (L66 \times W3 \times H8) + (L22 \times W4 \times H8) + 16 \\ = 2,304 \text{ cartons} \times 6 \text{ sets} \\ = 13,824 \text{ sets}$$

 Action Intelligent Co.,LTD	Product Definition	Model No.	RCX10002/37MVB
		Pages	23 of 23
		Revision	1.0

END
