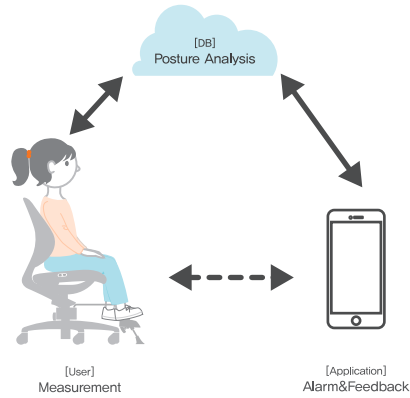


# Introduction



'Duorest on' is a new service that helps improve the way users sit by collecting data from pressure distribution sensors and analyzing posture.

# Featurer

## 1. Accurate and diverse posture analysis

Pressure sensors are distributed in detail on the front of the cushion to analyze the user's posture in detail. And artificial intelligence algorithms improve the accuracy of analysis as user data accumulates.

## 2. Convenient IoT Technology

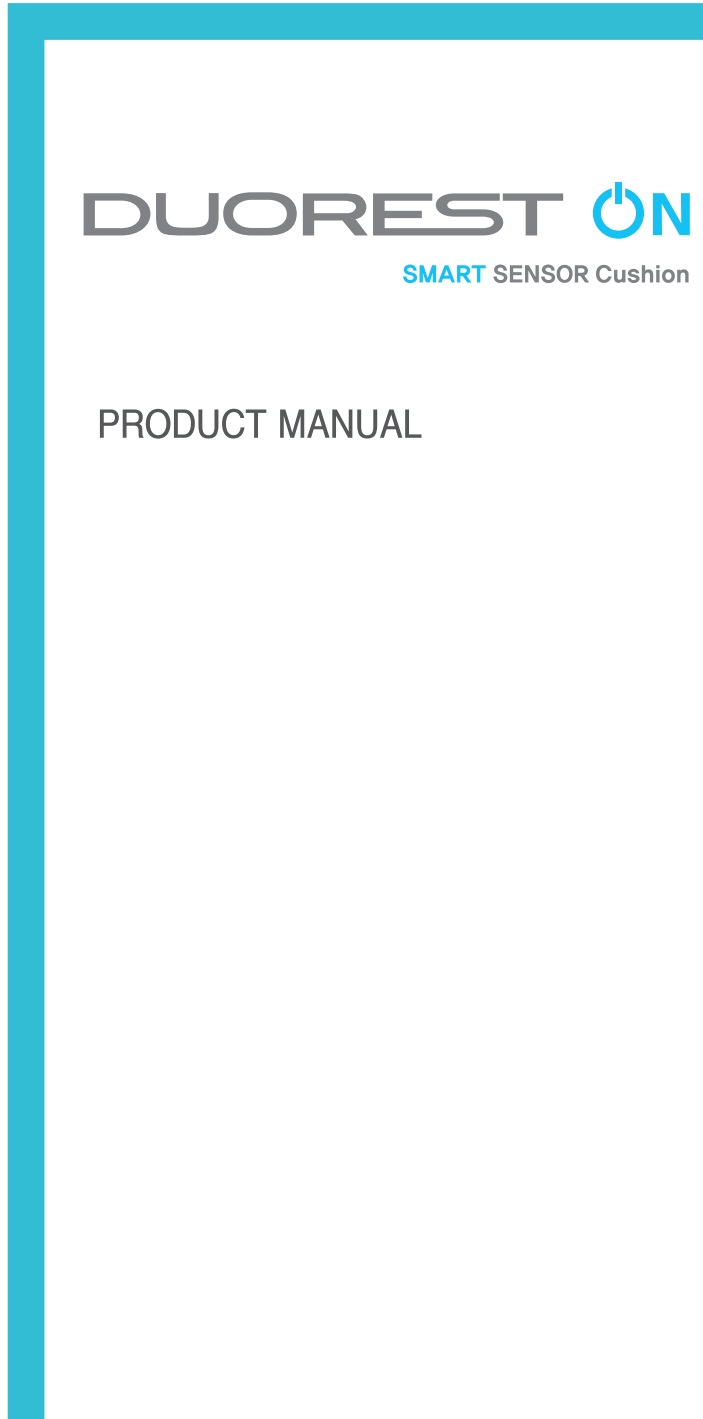
You can check user's sitting habits and statistics by period through your smartphone at any time. Experience new solutions to improve sitting habits through the fusion of duorest ergonomic design and IoT technology.

## 3. Sitting posture manager

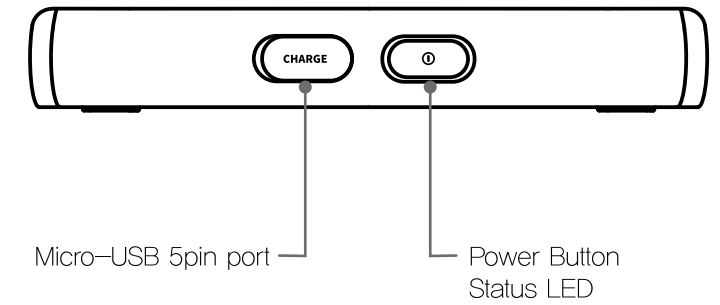
'Duorest on' offers customized alarms, statistical analysis, and health content on your smartphone to analyze your posture and improve your sitting habits.

## DUOBACK CO.,LTD.

- 1) Headquarters (Factory)  
27, Gajaeul-ro 32 beon-gil, Seo-gu, Incheon 22829, Korea
- 2) Sales Office  
#1002, 41, Digital-ro 31-gil, Guro-Gu, Seoul, 08375, Korea  
Tel : +82-2-6204-2584 Fax: +82-32-816-4817  
E-mail: export@duoback.co.kr



# Button part Introduction



**STATUS LED**

**POWER**

<span style="color: blue;">●</span>	<span style="color: grey;">●</span>	<span style="color: grey;">●</span>
on	off	Sleep mode

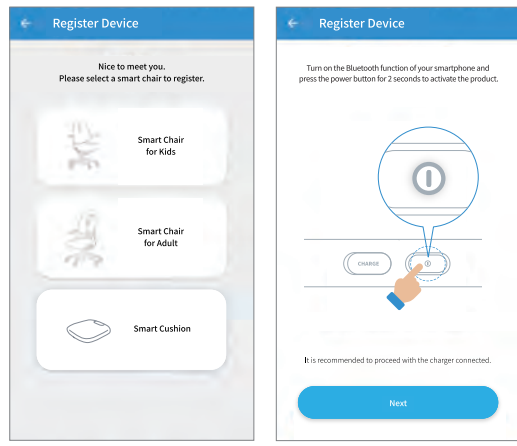
(Blue LED)

Connecting to server	Connection to server failed
<span style="color: blue;">●</span> <span style="color: grey;">●</span> <span style="color: blue;">●</span> <span style="color: grey;">●</span>	<span style="color: red;">●</span> <span style="color: blue;">●</span> <span style="color: red;">●</span> <span style="color: blue;">●</span>
Blue LED Flashes Fast	Red/Blue LED cross flashing

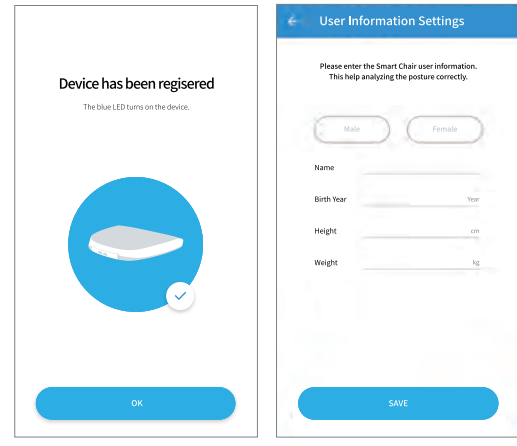
**CHARGE**

Power on	<span style="color: red;">●</span> <span style="color: grey;">●</span> <span style="color: red;">●</span> <span style="color: grey;">●</span>	<span style="color: pink;">●</span>	<span style="color: blue;">●</span>
	Low Battery (Red LED)	Charging (Pink LED)	Charging complete (Blue LED)
Power off (or Sleep mode)	<span style="color: red;">●</span>	<span style="color: green;">●</span>	
	Charging (Red LED)	Charging complete (Green LED)	

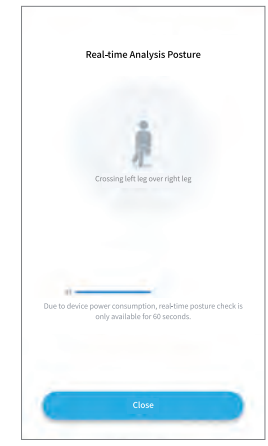
- 1 Please select the Duorest On product you purchased.
- 2 Turn on the Bluetooth feature on your smartphone, press the product power button for 2 seconds to activate the product, and then press the Next button.



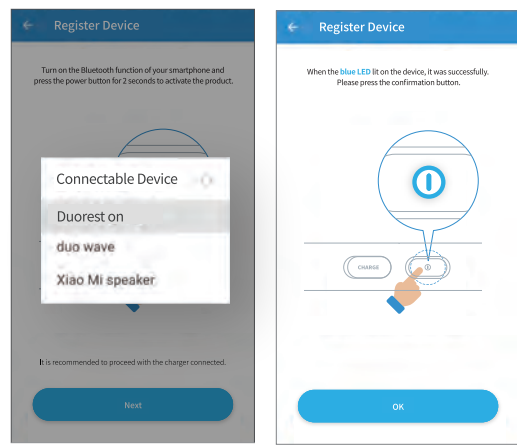
- 5 Registration completed successfully. Please press OK button.
- 6 Please enter the basic information of the actual user to improve posture analysis accuracy.



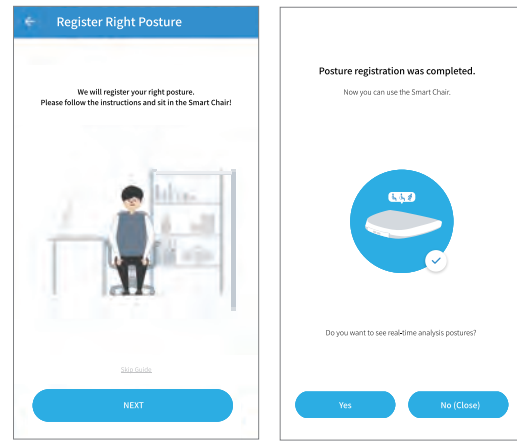
- 9 You can check the sitting position for 60 seconds. If you want to complete the posture check, please press the Close button. Access the application's main screen.
  - \*Real-time attitude analysis causes delays of approximately 3 seconds during the data transmission process.



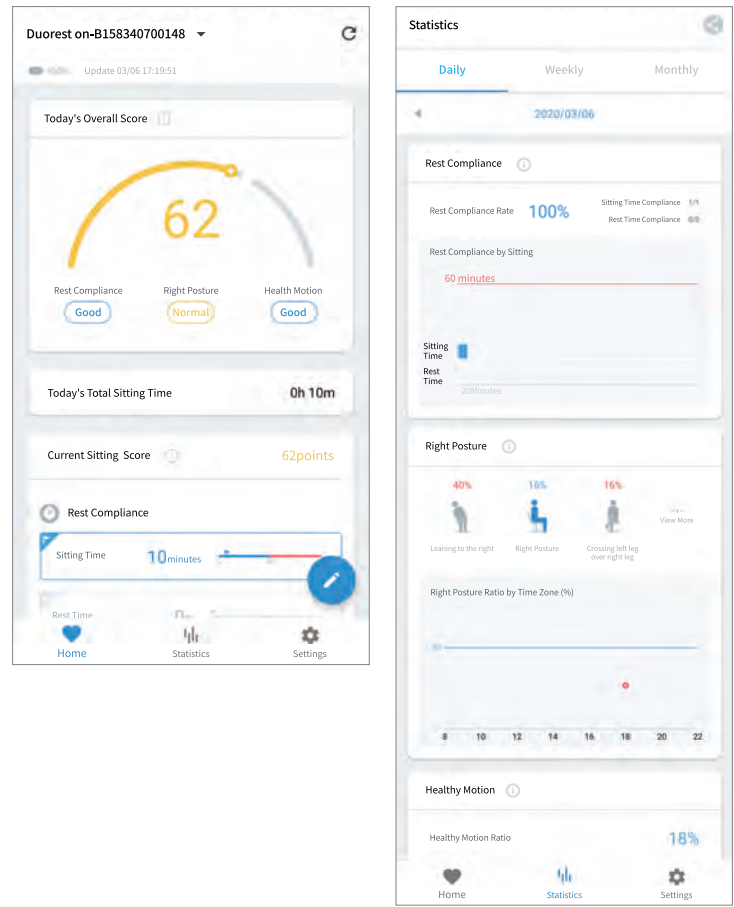
- 3 Select the device that works with your smartphone.
  - \* If it does not appear in the list, please click Refresh in the upper right corner.
- 4 Please check if registration is complete. If the power button has a blue LED light, the connection was successful. Please press the confirmation button.



- 7 Follow the instructions in the app to register the correct posture of the user.
- 8 Correct posture registration completed. If you want to use the app immediately, select No (close) or Yes to see the real-time posture applied to the product.



- 1 **Current State Information**  
Provide information on the user's current posture to the correct posture today, and the total amount of time spent sitting. You can see the battery status of the device and whether or not the charger is connected.
- 2 **Postural Analysis Statistics**
  - I will show you how to sit and how to sit during the week and the month.
  - You can change the date to review the records of other days.
  - Click the right arrow to see the ranking of the eight positions.
  - Review the correct posture ratio for the selected week and the ability to achieve your target relative to your sitting time.



# Regulation Information

This equipment has been tested and found to comply with the limits for a Class B digital device, pursuant to part 15 of the FCC Rules. These limits are designed to provide reasonable protection against harmful interference in a residential installation. This equipment generates, uses and can radiate radio frequency energy and, if not installed and used in accordance with the instructions, may cause harmful interference to radio communications. However, there is no guarantee that interference will not occur in a particular installation. If this equipment does cause harmful interference to radio or television reception, which can be determined by turning the equipment off and on, the user is encouraged to try to correct the interference by one or more of the following measures:

- Reorient or relocate the receiving antenna
- Increase the separation between the equipment and receiver.
- Connect the equipment into an outlet on a circuit different from that to which the receiver is connected.
- Consult the dealer or an experienced radio/TV technician for help.

This device complies with Part 15 of the FCC Rules. Operation is subject to the following two conditions:

- (1) this device may not cause harmful interference, and
- (2) this device must accept any interference received, including interference that may cause undesired operation.

## Caution:

Any changes or modifications to the equipment not expressly approved by the party responsible for compliance could void user's authority to operate the equipment. This appliance and its antenna must not be co-located or operation in conjunction with any other antenna or transmitter.

A minimum separation distance of 20 cm must be maintained between the antenna and the person for this appliance to satisfy the RF exposure requirement.