



BLUETOOTH GOLF SPEAKER

ITEM #: 91440

Features

Water resistance: IPX4

Bluetooth wireless (version 5.0)

LED pairing indicator

Mirco-USB port for battery recharge

CONTROL

Power / LED Indicator (Pairing bluetooth) (Blue light)

Press to power on and begin pairing to a Bluetooth device.
Press again and hold to power off.
BLUE light indicates wireless connection status.

Volume - / Skip Back

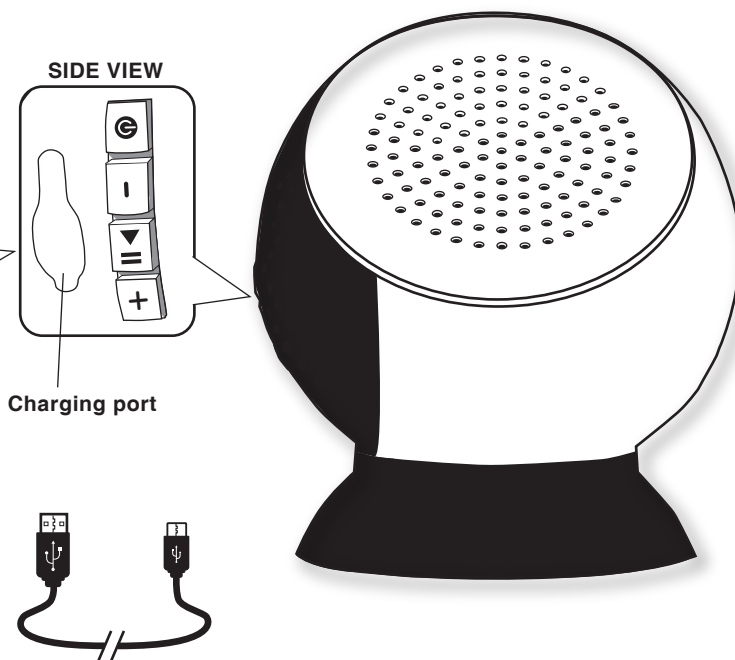
Press to skip back a selected audio track.
Press and hold to decrease the volume.

Play / Pause

Press to play or pause a selected audio track.

Volume + / Move Forward

Press to move forward to the next audio track.
Press and hold to increase the volume.



Contains: 1 speaker and 1 charging cord

CHARGE BATTERY BEFORE OPERATING

Bluetooth golf speaker is powered by permanently installed rechargeable 3.7V / 500 mAh Li-ion battery (included and non-replaceable).

1. Open the charging port door.
2. Plug the Mirco-USB into the speaker charging port.
3. Plug the USB into a computer or USB power supply.


RED LIGHT = CHARGING

LIGHT OFF = FULL CHARGE

4. Charging battery until full and the red light is off.
 5. Once charged, unplug the USB from the USB port.
 6. Unplug the Mirco-USB from speaker and close the door surely.
- Bluetooth golf speaker is ready for using.
7. Mirco-USB charging lead time: 2 hours.
 8. The bluetooth golf speaker can play 1.5 hours.

BLUETOOTH

Device Pairing and Audio Playing

1. Press  to power on. The pairing indicator will slowly flash blue beneath and the speaker will cue: "BLUETOOTH PAIRING ON".
2. On your mobile device: switch on Bluetooth and then search "Mulligan" to pair.
3. If your device requests a password, entre the default password: 0000.
4. The device should keep within 3 feet distance of the speaker.
5. The blue LED light will turn solid and the speaker will cue: "BLUETOOTH CONNECTED".
6. Use the controls on the speaker or on the connected device to select and play audio, and adjust the volume.

After initial pairing, the unit will stay paired unless unpaired manual by the user or erased due to a reset of the device. If your device should become unpaired or you find it is unable to connect, repeat the above steps.

Warning and Caution of of the Li-ion Battery:

THIS PRODUCT CONTAINS LI-ION BATTERY 3.7V / 500 mAh
Li-ion battery has a servere risk of fire and injury if it is improperly handled or misused. Read all emclosed instructions, warnings and precautions regarding the care, use and displosed of Li-ion battery. The enclosed Li-ion battery is only to be used with the speaker and charger included with this product.

- Keep away from flammable materials.
- Do not expose to direct sunlight.
- Do not place in fires or leave in hot places.
- Keep dry after use.
- Never throw battery in a fire or attempt to open outer casing.
- Rechargeable battery in is only to be charged by adults.
- Charging cord used with the speaker is to be regularly examined for damage to the cord, plug, enclosure and other parts. In the event of such damage, it must not be used until the damge has been repaired.

Li-ion battery disposal: Li-ion battery must be recycled or disposed of properly. They should not be disposed of with other correct recycling and/or battery disposal.

CHARGING PRECAUTIONS:

- If you suspect that the battery is damaged or swelling, discontinue opreating the speaker immediatley.
- Do not modify, heat, or get battery wet in any way.

Warning: Changes or modifications to this unit not expressly approved by the party responsible for the compliance could void the user's authority to operate the equipment.

NOTE: This equipment has been tested and found to comply with the limits for a Class B digital device, pursuant to Part 15 of the FCC Rules. These limits are designed to provide reasonable protection against harmful interference in a residential installation. This equipment generates, uses and can radiate radio frequency energy and, if not installed and used in accordance with the instructions, may cause harmful interference to radio communications. However, there is no guarantee that interference will not occur in a particular installation.

Consult the dealer or an experienced radio/TV technician for help.

MAINTENANCE

Keep instruction for future reference.

Federal Communications Commission (FCC) Statement

This device complies with part 15 of the FCC Rules. Operation is subject to the following two conditions: (1) This device may not cause harmful interference, and (2) this device must accept any interference received, including interference that may cause undesired operation.

Note: This equipment has been tested and found to comply with the limits for a Class B digital device, pursuant to part 15 of the FCC Rules. These limits are designed to provide reasonable protection against harmful interference in a residential installation. This equipment generates, uses and can radiate radio frequency energy and, if not installed and used in accordance with the instructions, may cause harmful interference to radio communications. However, there is no guarantee that interference will not occur in a particular installation. If this equipment does cause harmful interference to radio or television reception, which can be determined by turning the equipment off and on, the user is encouraged to try to correct the interference by one or more of the following measures:

- Reorient or relocate the receiving antenna.
- Increase the separation between the equipment and receiver.
- Connect the equipment into an outlet on a circuit different from that to which the receiver is connected.
- Consult the dealer or an experienced radio/TV technician for help.

Warning: Changes or modifications made to this device not expressly approved by Shing Chuen Plastic Product Company Ltd may void the FCC authorization to operate this device.

Note: The manufacturer is not responsible for any radio or TV interference caused by unauthorized modifications to this equipment. Such modifications could void the user's authority to operate the equipment.

RF exposure statement:

The transmitter must not be colocated or operated in conjunction with any other antenna or transmitter. This equipment complies with the FCC RF radiation exposure limits set forth for an uncontrolled environment. This equipment should be installed and operated with a Minimum distance of 5mm between the radiator and any part of your body.