

TheNODE, TheNODE IO and TheNODE LCD



Figure 1 – IO_board_BOTTOM



Figure 2 – IO_board_TOP

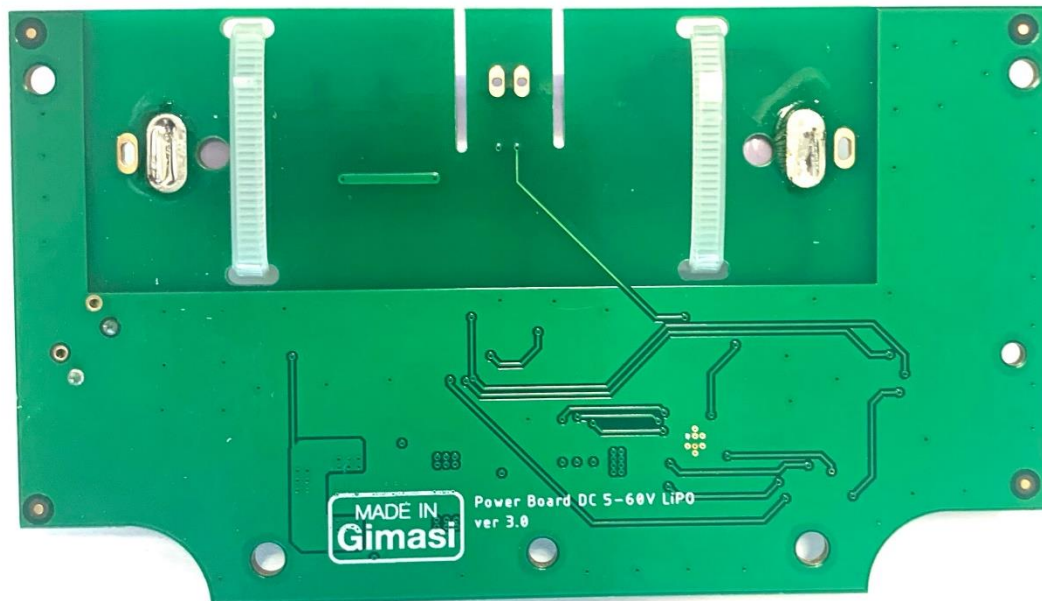


Figure 3 – POWER_board_BOTTOM

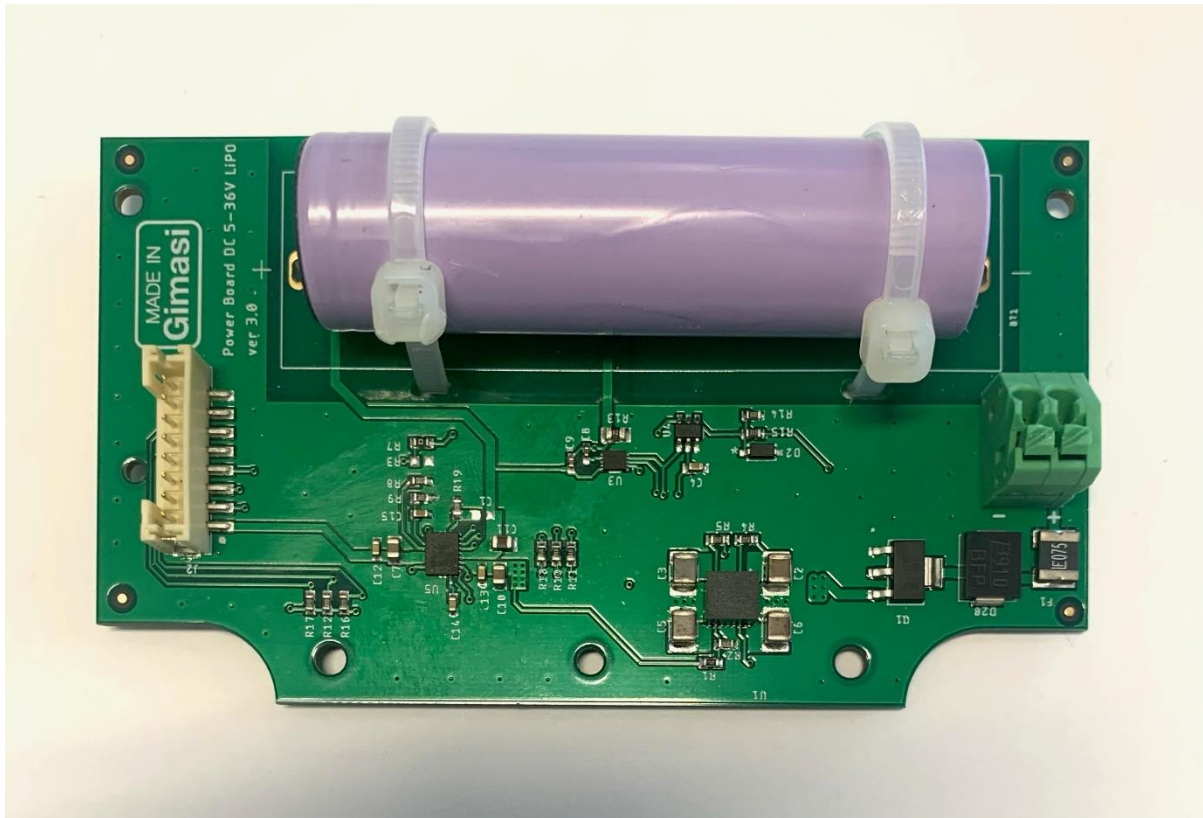


Figure 4 – POWER_board_TOP

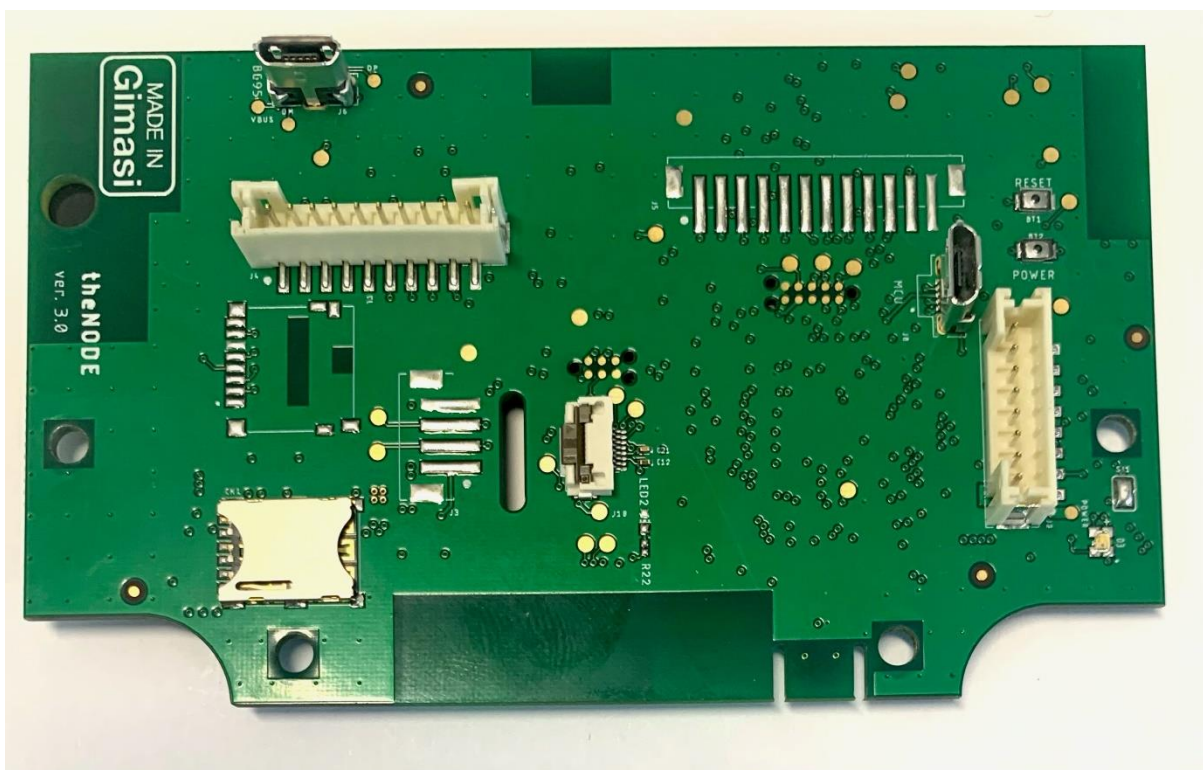


Figure 5 – TheNODE_BOTTOM

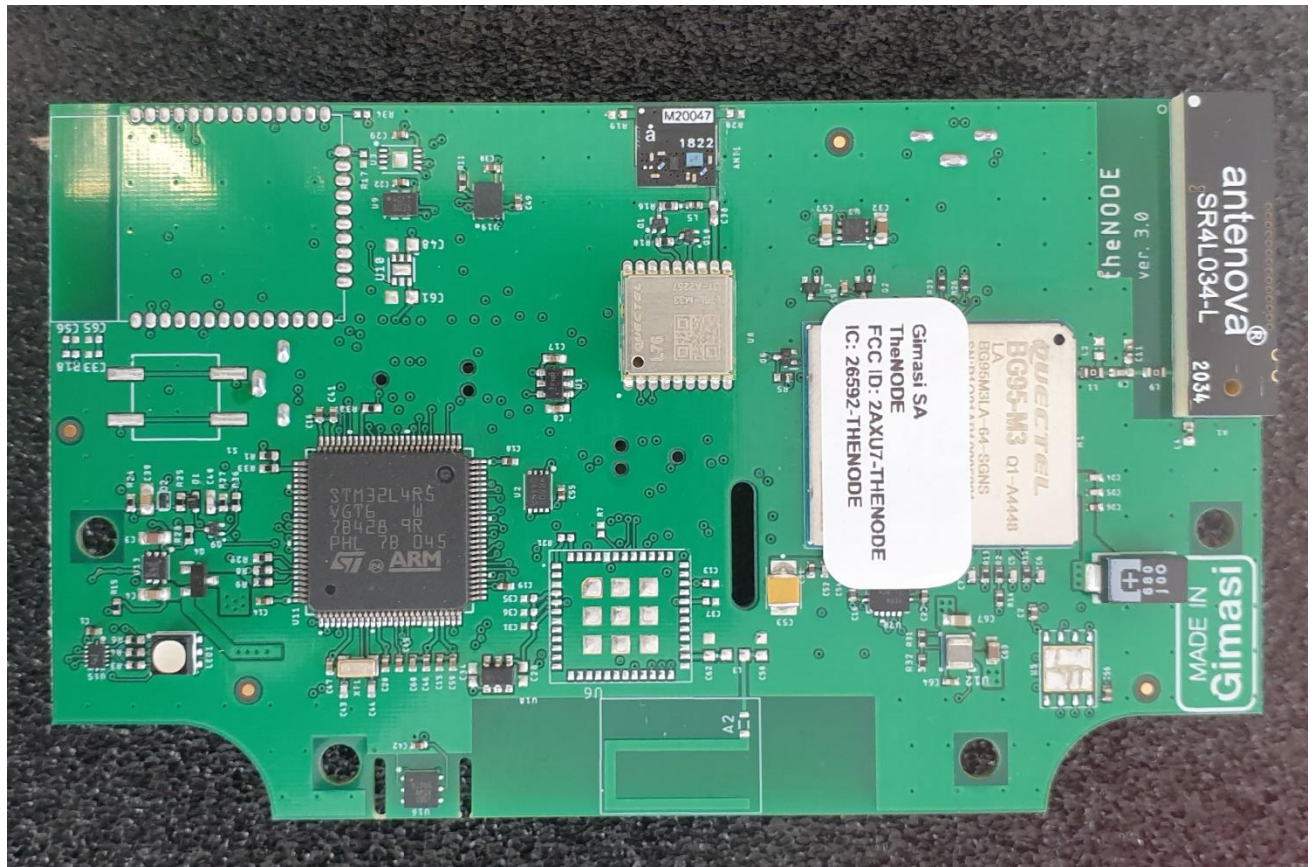


Figure 6 – TheNODE_TOP

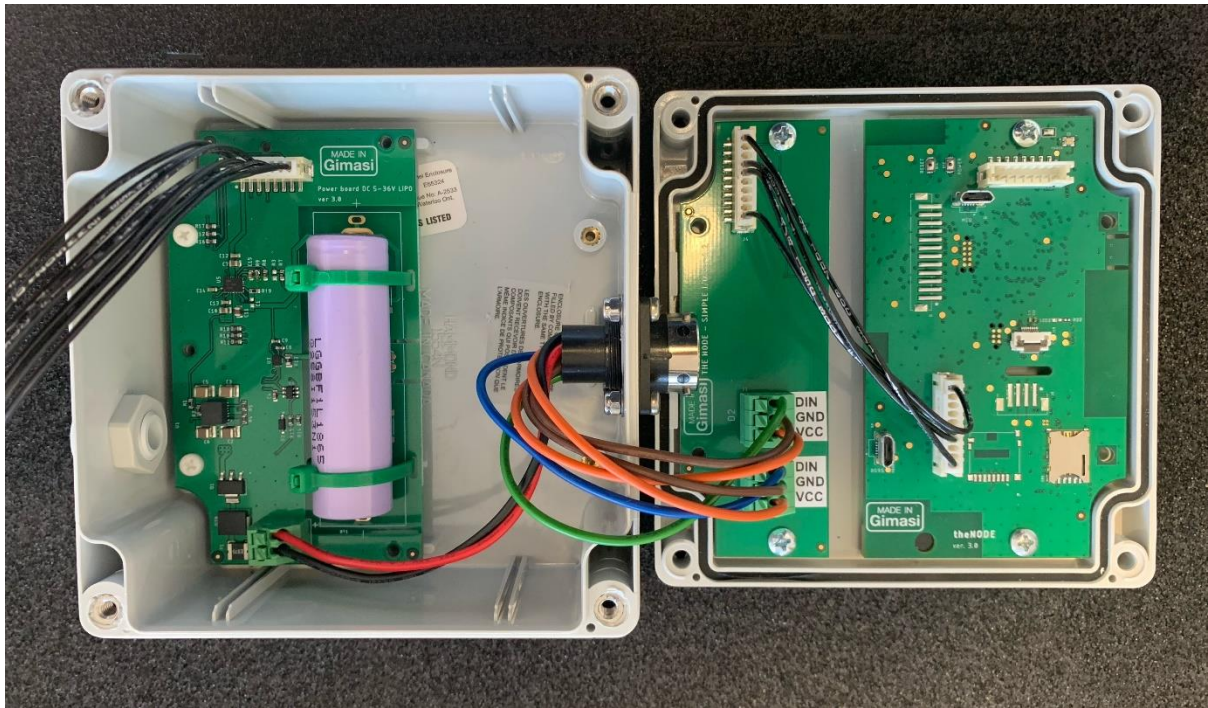


Figure 7 – Internal overview