



USER MANUAL

MIDIPLUS

Thank you for purchasing the **MIDIPLUS** 2nd generation MI series active monitor with Bluetooth, features 3.5 inch/5.25 inch fiberglass woven cone woofer and 1 inch silk-dome tweeter with metal mesh cover. Flexible inputs including TRS, RCA, Aux in and Bluetooth streaming. The high energy efficiency Digital Audio Amplifier and all-wood cabinet provides the professional quality sound, it is great for bedroom studio, home entertainment system. This instructions will help you to know the function and operation of MI series quickly. Please keep it properly in order to consults.

Notes:

- ◇ Do not remove the rear panel of the speaker to avoid electric shock.
- ◇ Long-term use of excessive volume will cause permanent hearing loss, please pay attention to protect your hearing.
- ◇ In order to be more effectively protected the speaker, please use the original packing carton if transporting them.
- ◇ Do not drop or splash water to the speaker, do not put objects full with liquid onto the device, like vase.
- ◇ The disconnecting device of this product is the power plug, the power socket should be near the product and easy to use, do not block by other objects.



Please use in non-tropical climates only for safety

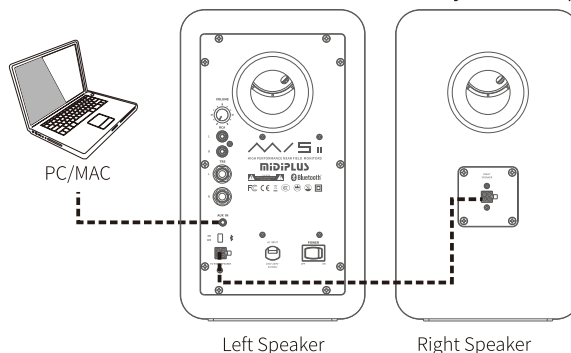


Please use in altitude under 2000m only for safety

Hookup diagrams

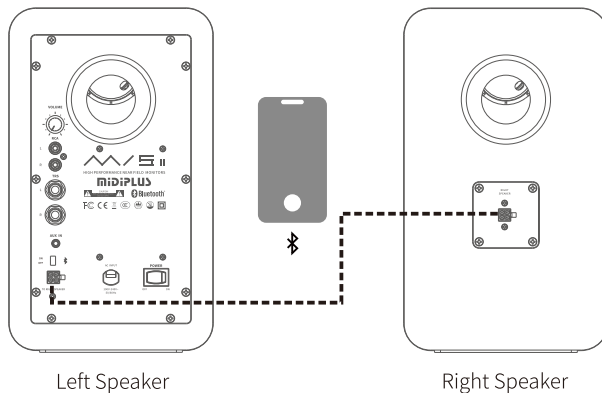
Connect to Computer

1. Use the 4-pin speaker cable to connect the Right speaker and Left speaker
2. Use the included 1/8" audio cable to connect to your computer

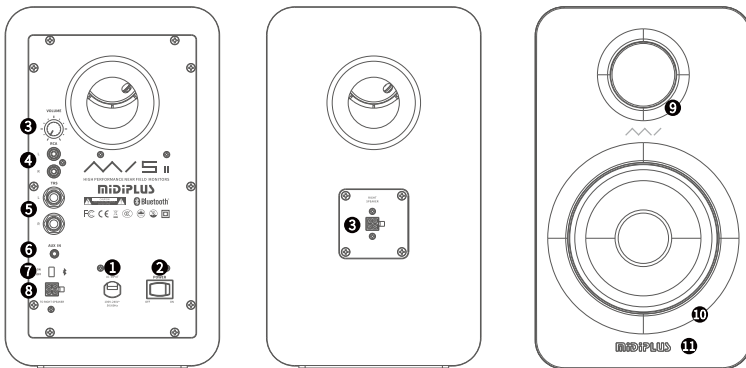


Bluetooth Connectivity

1. Use the included 4-pin speaker cable to connect the Right speaker and Left speaker, then turn on the power.
2. Turn on the Bluetooth switch on the rear panel, then you should see "MI 3" or "MI 5" in the available devices list of smartphone or computer.
3. Tapping it to connect it, when it is successfully connected, the **MiDiPLUS** logo LED remain solid blue.



Front and Rear Panel Features



1. AC Line cord: Connect to the live AC outlet
2. Power: Turn on/off the power
3. Right Speaker Connector: Connect the Right (passive) speaker to the Left (powered) speaker through the included speaker cable.
4. Volume: Control the volume

5. RCA: Unbalanced input, connect to the signal source through RCA cable (not included)
6. TRS: Balanced input, connect to the signal source through TRS cable (not included)
7. AUX IN: Stereo input, connect to the stereo signal source through the included 1/8" cable
8. Bluetooth: Turn on/off the Bluetooth connectivity
9. HF Drive: 1 inch silk-dome tweeter
10. LF Drive: 3.5 inch (MI 3)/ 5.25 inch (MI 5) Fiberglass woven cone woofer
11. **MIDIPLUS** logo LED: The **MIDIPLUS** logo LED illuminates white when the power is turned on, the LED illuminates blue and white breathing when the Bluetooth is turned on but unconnected, LED illuminates blue when Bluetooth is connected.

Technical Specifications

	MI 3 II	MI 5 II
Frequency Response (-3dB)	70 Hz – 20 kHz	60 Hz – 20 kHz
HF Driver	1" Silk-dome	1" Silk-dome
LF Driver	3.5" Fiberglass woven cone	5.25" Fiberglass woven cone
Connectors	RCA Unbalanced 1/4" TRS Balanced 1/8" Stereo Unbalanced 4-pin Speaker Connector	
Bluetooth	Bluetooth 5.0 Supports: A2DP V1.3, AVRCP V1.6, GAVDP V1.3, HFP V1.7, HID V1.1, IOPT, SPP V1.2	
Rated Power	25 Watts x 2	35 Watts x 2
Amplifiers Design	Class D	Class D
Dimension (W*H*D)	120 * 202 * 160 mm	170 * 290 * 224 mm
Net Weight	3.31kg(Per Pair)	7.37kg(Per Pair)

This device complies with part 15 of the FCC Rules. Operation is subject to the following two conditions: (1) This device may not cause harmful interference, and (2) this device must accept any interference received, including interference that may cause undesired operation.

Changes or modifications not expressly approved by the party responsible for compliance could void your authority to operate the equipment.

NOTE:

This equipment has been tested and found to comply with the limits for a Class B digital device, pursuant to Part 15 of the FCC Rules. These limits are designed to provide reasonable protection against harmful interference in a residential installation.

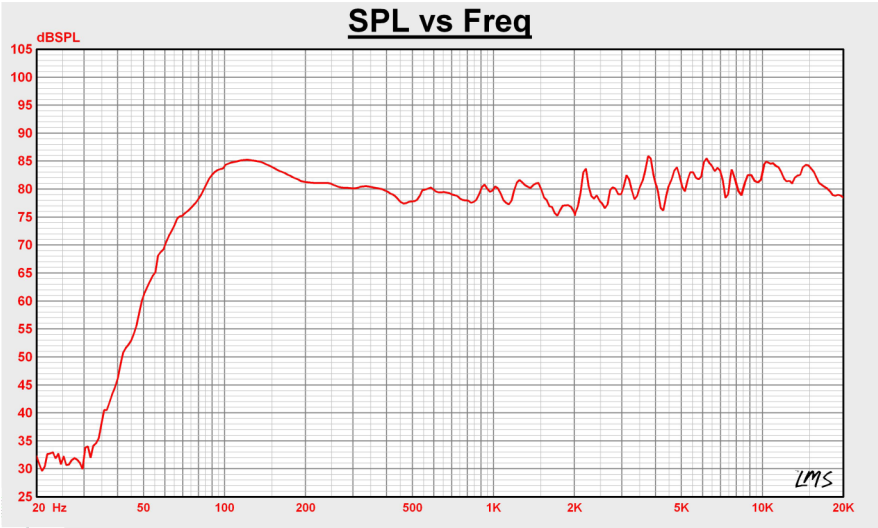
This equipment generates uses and can radiate radio frequency energy and, if not installed and used in accordance with the instructions, may cause harmful interference to radio communications. However, there is no guarantee that interference will not occur in a particular installation. If this equipment does cause harmful interference to radio or television reception, which can be determined by turning the equipment off and on, the user is encouraged to try to correct the interference by one or more of the following measures:

- Reorient or relocate the receiving antenna.
- Increase the separation between the equipment and receiver.
- Connect the equipment into an outlet on a circuit different from that to which the receiver is connected.
- Consult the dealer or an experienced radio/TV technician for help.

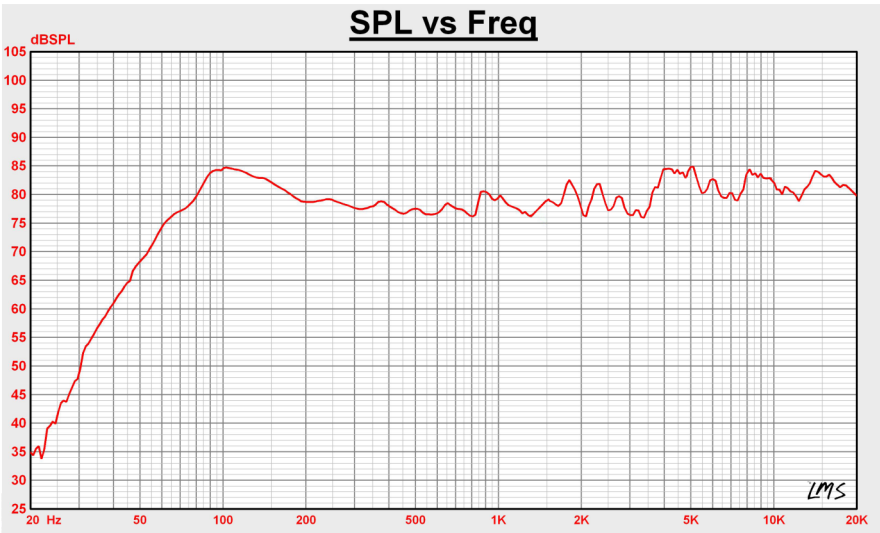
The distance between user and products should be no less than 20cm

Frequency Response

MI 3 II



MI 5 II





用户手册

MIDIPLUS

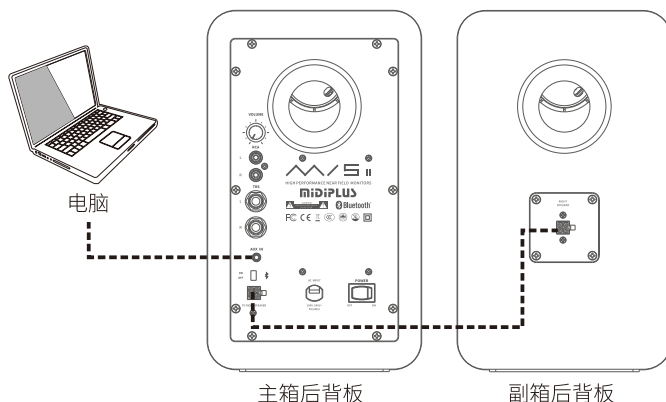
感谢您购买 **MIDIPLUS** MI系列第二代蓝牙有源监听音箱,采用3.5英寸/5.25英寸玻纤编织盆低音单元,带有金属保护网罩的1英寸丝膜球顶高音单元。具备了TRS, RCA, Aux in以及蓝牙连接的灵活输入方式,以及高能效的纯数字音频功放和全木质箱体,营造出的专业声音品质非常适合个人工作室、家庭影音娱乐等使用场景。本说明书可以帮助您快速了解MI系列音箱的功能与操作方法.请妥善保存,以便查阅。

注意事项:

- ◇ 请勿打开或拆除设备的后面板,以防发生电击危险。
- ◇ 请勿踩踏、挤压和破伤电源线,以确保使用安全。
- ◇ 请勿在设备上放置任何装满液体的器具,如花瓶。
- ◇ 请勿在设备上放置任何形式的明火,如点燃的蜡烛。
- ◇ 请勿在雷雨天气时使用本设备,以免发生雷击损坏。
- ◇ 请勿将设备接触水或者湿气,不得淋雨和水溅,防止产品进水发生短路危险。
- ◇ 请勿将设备靠近任何热源使用,如:电暖气、电热毯或其他产生热源的设备。
- ◇ 请将设备放置在通风良好,环境干燥的环境中使用。
- ◇ 长期不使用时,请将电源线插头从电源插座中拔下。
- ◇ 长期使用过大的音量可能会造成听力的永久性受损,请注意保护好听力。
- ◇ 本设备如需运输,建议使用原包装纸盒,以便更有效的保护箱体。
- ◇ 本设备使用开关装置作为断开装置,应该保持方便操作。
- ◇ 本设备仅适用于海拔**2000m**以下地区使用。⚠️
- ◇ 本设备仅适用于非热带气候条件下安全使用。⚠️

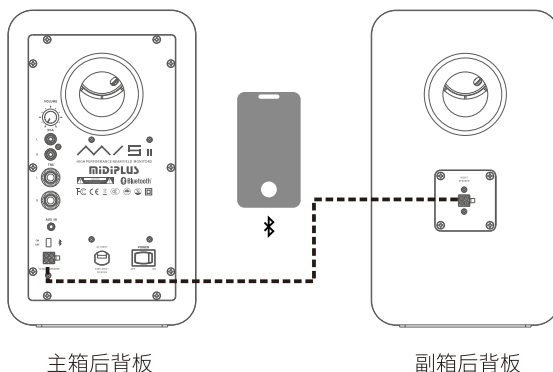
连接图:

连接电脑



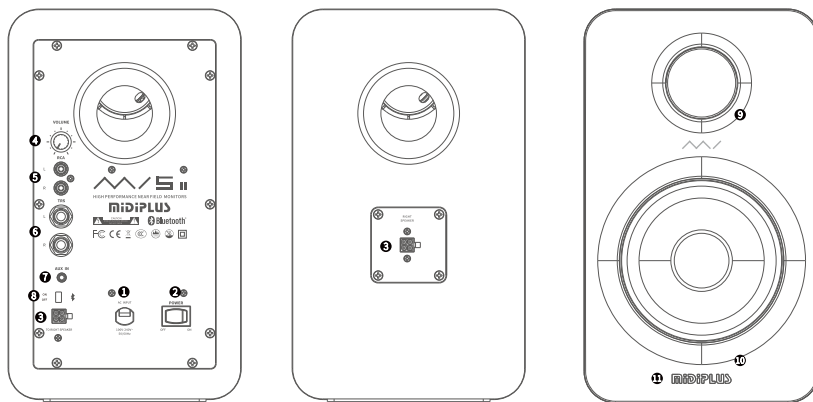
- 1、使用自带的4针音箱线连接好主/副音箱
- 2、使用自带的3.5mm音频线连接至电脑

蓝牙连接



- 1、使用自带的4针音箱线连接好主/副音箱，然后打开电源，
- 2、将主箱背面的蓝牙开关拨到“ON”位置开启蓝牙，然后通过手机或电脑蓝牙连接找到名称为“MI 3”或“MI 5”并点击连接音箱，
- 3、连接成功后，**MIDIPLUS** 标志指示灯将常亮淡蓝色。

前/后面板介绍:



1. 电源线:用于连接电源
2. 电源开关:用于开启或关闭监听音箱电源

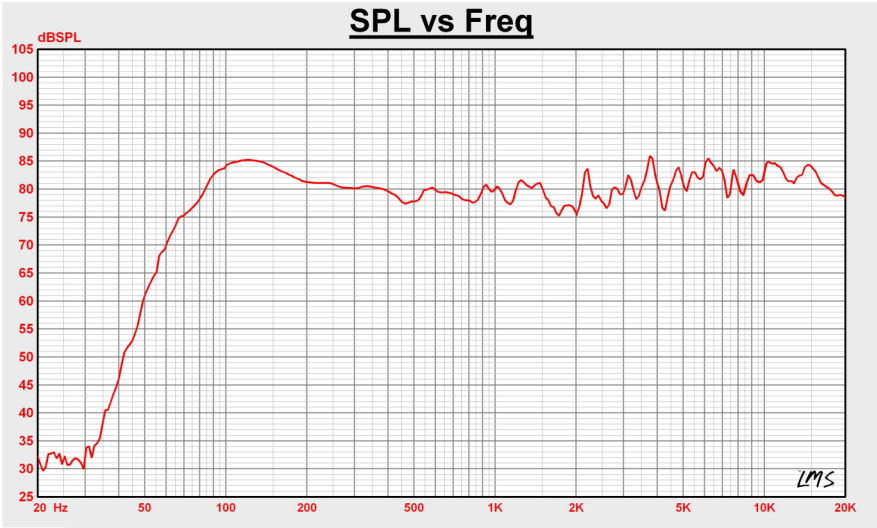
- 3. 主/副音箱连接接口:使用附带的4针音箱线连接主/副音箱
- 4. 音量旋钮:用于控制监听音箱音量
- 5. RCA接口:非平衡输入,使用RCA音频线(需另购)连接至信号源
- 6. TRS接口:平衡输入,使用TRS音频线(需另购)连接至信号源
- 7. AUX IN接口:立体声音频输入,使用附带的3.5mm音频线连接至信号源
- 8. 蓝牙开关:用于开启或关闭音箱的蓝牙连接功能
- 9. 高音单元:1" 丝膜球顶高音单元
- 10. 低音单元:3.5" /5.25" 低音单元
- 11. **niDiPLUS** 指示灯:开启电源后,指示灯常亮白色灯,蓝牙开启但未连接时,指示灯呈白/淡蓝色灯呼吸交替,蓝牙连接后,指示灯常亮淡蓝色灯

技术规范:

	MI 3 II	MI 5 II
频响范围 (-3dB)	70 Hz – 20 kHz	60 Hz – 20 kHz
高音单元	1"丝膜球顶	1"丝膜球顶
低音单元	3.5"玻璃纤维编织盆	5.25"玻璃纤维编织盆
接口	RCA非平衡输入 6.35mm TRS平衡输入 3.5mm立体声输入 4针音箱连接线	
蓝牙	Bluetooth 5.0 支持协议: A2DP V1.3、AVRCP V1.6、GAVDP V1.3、HFP V1.7、HID V1.1、IOPT、SPP V1.2	
额定功率	25W * 2	35W * 2
功放类型	D类	D类
尺寸 (W*H*D)	120 * 202 * 160 mm	170 * 290 * 224 mm
净重	3.31kg(一对)	7.37kg(一对)

频响曲线图

MI 3 II



MI 5 II

