

QUICK OPERATION GUIDE

Please read the quick instructions carefully when using the product



National Service Telephone
400-661-1508

Function Introduction

Status indicator

Green light

slow flash: flash once in 3 seconds, flash once in 10 seconds after starting, waiting for connection
Lighting on : Bluetooth connection successes

Red Indicator

Limit switch detects abnormal light, locks/unlock flash twice.

Button

Microphone button: Long press and sound a beep to start recording, release and make two “beep” sounds to end and play the recording. Recording duration can be up to 10 seconds
Feed Button: Short press and feed the food, then play the recording, long press the red indicator light for 10 seconds and flash twice to lock the device. Long press the red indicator again and flash twice.
Rest Button: Reset/factory setting, press and three beeps sound for 10 seconds to reset or restore factory setting in both connected and locked status

5V DC power jack

For external connection to DC5 volt power adapter

How to disassemble the storage barrels

The food storage barrel has a lock, press the lock and lift the barrel.

Speaker

The speaker at the bottom is the speaker that plays a recording of calling food.

How to open and close the cover of food storage barrel

The cover of the food bucket adopts self-suction design. The cover is aligned with the bucket and pressed tightly

Bottom Battery Holder

Three D size batteries can be placed to supply power for the whole machine. Rechargeable batteries should not be used.

How to install food plates

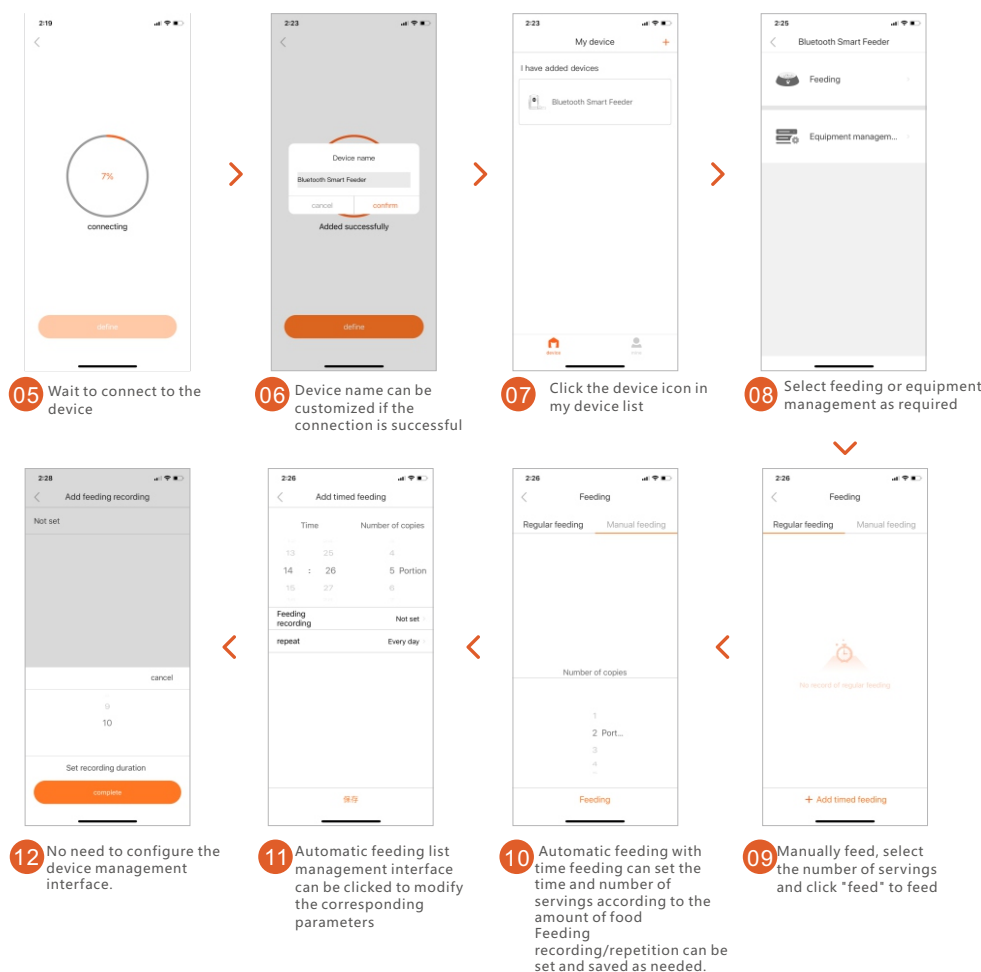
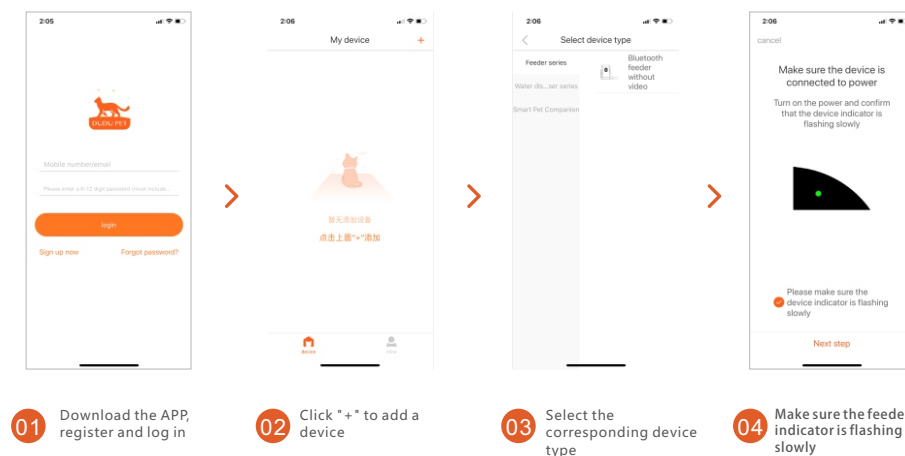
There are two connecting holes on the inside of the food plate. Just insert the connecting column at the bottom of the machine into the connecting hole.

Recording Setting

After the feeder is configured, you can add a recording to the feeder it will play every time you press a button or automatically when it's time to feed your pet. The specific operation is as follows

Long press the microphone button to start the recording with a "beep" sound, release the button to end the recording with two "beep" sounds and then play the recording. The recording duration is up to 10 seconds. If you are not satisfied, you can repeat this operation to cover the previous recording

DUDUPet Smart APP Specific operation



Simple Troubleshooting of Pet Feeder

01 If the feeder is inaccurate or there is no feeding, please firstly check the food plate to see if there is too much food, or whether the food channel is blocked. Please clean the food outlet and channel. Please check if the battery is dead and if there is any leakage fluid of the battery.

02 If there is no working after starting, firstly check whether the power is properly plugged. If all power switches are plugged in, check whether the power is damaged, contact customer service to purchase the power or return to the factory for repair according to judgment..

Packing List

After opening the package, please make sure that the pet feeder is in good condition,

Please check the list to see if the accessories are complete.

Feeder machineX1
Power cable X1 , Quick operation guider X1

FCC Warning Statement Changes or modifications not expressly approved by the party responsible for compliance could void the user's authority to operate the equipment. This equipment has been tested and found to comply with the limits for a Class B digital device, pursuant to Part 15 of the FCC Rules. These limits are designed to provide reasonable protection against harmful interference in a residential installation. This equipment generates uses and can radiate radio frequency energy and, if not installed and used in accordance with the instructions, may cause harmful interference to radio communications. However, there is no guarantee that interference will not occur in a particular installation. If this equipment does cause harmful interference to radio or television reception, which can be determined by turning the equipment off and on, the user is encouraged to try to correct the interference by one or more of the following measures:

- Reorient or relocate the receiving antenna.
- Increase the separation between the equipment and receiver.
- Connect the equipment into an outlet on a circuit different from that to which the receiver is connected.
- Consult the dealer or an experienced radio/TV technician for help.

This device complies with part 15 of the FCC Rules. Operation is subject to the following two conditions: (1) This device may not cause harmful interference, and (2) this device must accept any interference received, including interference that may cause undesired operation.

RF Exposure Statement

To maintain compliance with FCC's RF Exposure guidelines, This equipment should be installed and operated with minimum distance of 20cm the radiator your body. This device and its antenna(s) must not be co-located or operation in conjunction with any other antenna or transmitter