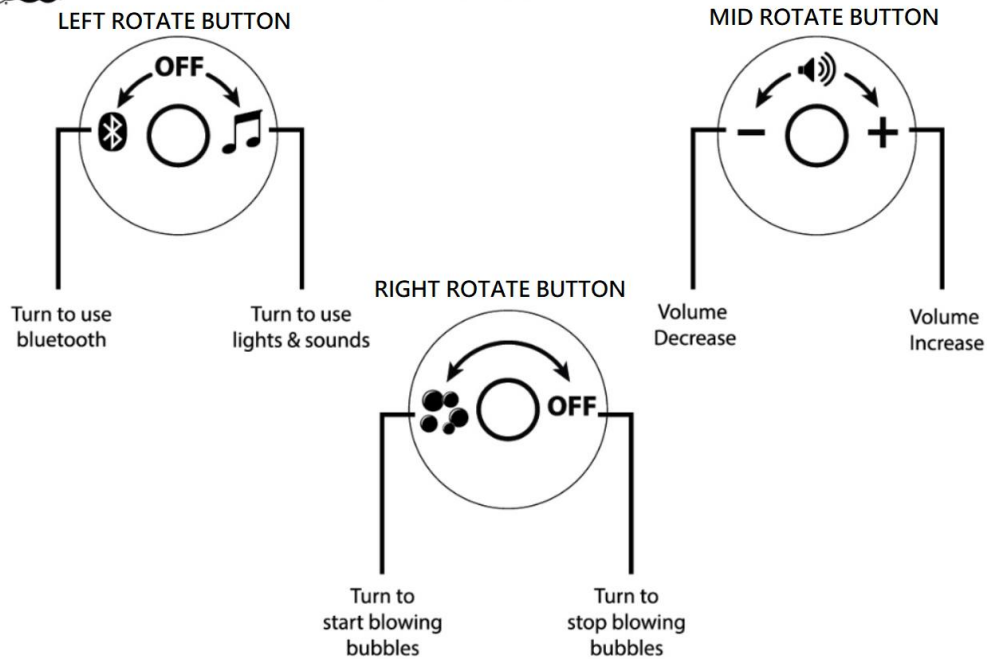




BUBBLE BOOMBOX INSTRUCTIONS



Product Operation:

To turn on bubble blow function – Rotates the right rotate button to left (Turn to start blowing bubbles).

To turn off bubble blow function – Rotates the right rotate button to right (Turn to stop blowing bubbles).

To turn on and play Bubble Boombox's light and sound – Rotates the left rotate button to right (Turn to use lights & sounds).

To turn on and play music by Blue Tooth – Rotate the left rotate button to left (Turn to use Bluetooth), when it plays a sound, search this device by a blue tooth supported smart device. Connect the device with Bluetooth id of "SDE1".

To increase the sound volume during playing Blue Tooth music – Rotate the mid rotate button to right (Volume increase).

To reduce the sound volume during playing Blue Tooth music - Rotate the mid rotate button to left (Volume decrease).



BUBBLE BOOMBOX INSTRUCTIONS

Caution: The user is cautioned that changes or modifications not expressly approved by the party responsible for compliance could void the user's authority to operate the equipment.

Note: This equipment has been tested and found to comply with the limits for a Class B digital device, pursuant to part 15 of the FCC Rules. These limits are designed to provide reasonable protection against harmful interference in a residential installation. This equipment generates uses and can radiate radio frequency energy and, if not installed and used in accordance with the instructions, may cause harmful interference to radio communications. However, there is no guarantee that interference will not occur in a particular installation. If this equipment does cause harmful interference to radio or television reception, which can be determined by turning the equipment off and on, the user is encouraged to try to correct the interference by one or more of the following measures:

- Reorient or relocate the receiving antenna.
- Increase the separation between the equipment and receiver.
- Connect the equipment into an outlet on a circuit different from that to which the receiver is connected.
- Consult the dealer or an experienced radio/TV technician for help.

FCC Supplier's Declaration of Conformity

Brand name : MAXX BUBBLES BUBBLE BOOMBOX / model number : 320323

This device complies with part 15 of the FCC Rules. Operation is subject to the following two conditions: (1) This device may not cause harmful interference, and (2) this device must accept any interference received, including interference that may cause undesired operation.

Sunny Days Entertainment, LLC

PO Box 80644 Simpsonville, SC 29680

www.sunnydaysent.com

This device contains licence-exempt transmitter(s)/receiver(s) that comply with Innovation, Science and Economic Development Canada's licence-exempt RSS(s).

Operation is subject to the following two conditions:

1. This device may not cause interference.
2. This device must accept any interference, including interference that may cause undesired operation of the device.

L'émetteur/récepteur exempt de licence contenu dans le présent appareil est conforme aux CNR d'Innovation, Sciences et Développement économique Canada applicables aux appareils radio exempts de licence. L'exploitation est autorisée aux deux conditions suivantes :

1. L'appareil ne doit pas produire de brouillage;
2. L'appareil doit accepter tout brouillage radioélectrique subi, même si le brouillage est susceptible d'en compromettre le fonctionnement.



CAN ICES-3 (B)/NMB-3(B)