



**AIRTECH  
OLED/LCD LAMINATING SYSTEM  
IOT BASED  
ST0098767**

**OPERATING USER MANUAL**

---



## CAUTION

THIS SYSTEM IS TO BE USED ONLY BY A TRAINED  
SCREENTECH AUTHORIZED PERSONAL



This symbol indicates that dangerous  
Voltage which can cause electric shock  
is present inside the unit



This symbol alerts you to important  
Operating and maintenance instructions  
accompanying the unit

## WARNING

To reduce the risk of electric shock,  
do not expose this machine to rain or  
moisture

## CAUTION

To reduce risk of Laser radiation  
exposure do not open the machine lid  
during its operation



This symbol alerts you that this machine  
may crush your hands if not used correctly.



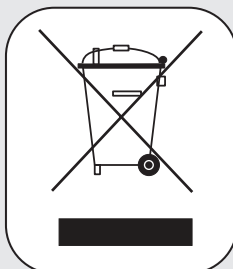
CE marking is an administrative marking that  
indicates conformity with health, safety,  
and environmental protection standards for  
products sold within the European Economic Area (EEA)



FDA defines a radiation-emitting electronic product  
as any electrically-powered product that can emit  
any form of radiation on the electromagnetic spectrum.

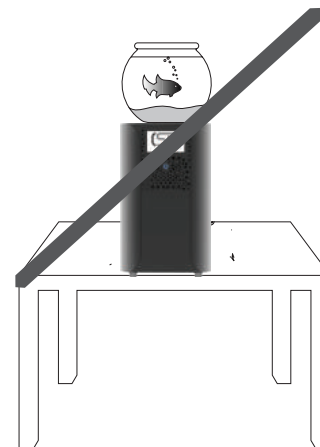
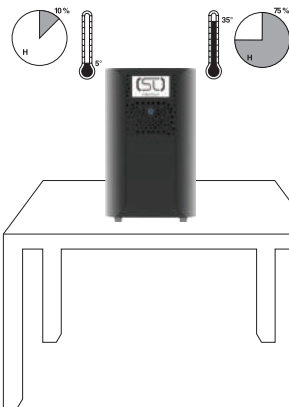
## — EUROPE ONLY —

This marking shown on the product or its literature, indicates that it should not  
be disposed with other commercial wastes at the end of its working life.  
To prevent possible harm to the environment or human health from uncon-  
trolled waste disposal, please separate this from other types of wastes and  
recycle it responsibly to promote the sustainable reuse of material resources.  
Commercial users should contact their distributor where they purchased this  
product from for details of where and how they can take this item for  
environmentally safe recycling.  
Business users should contact their supplier and check the terms and  
conditions of the purchase contract.  
This product should not be mixed with other commercial wastes for disposal.



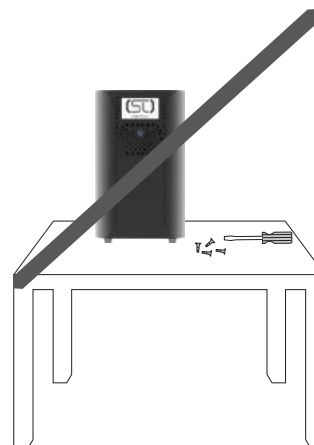
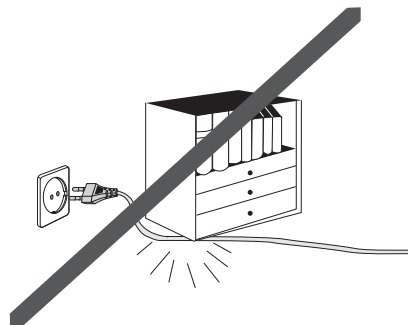
1.	Index.....	PAGE 2
1.	<b>Safety</b>	
1.1	Safety warnings.....	PAGE 2
1.2	Safety Precautions.....	PAGE 3
2.	<b>Checklist</b>	
	Checklist.....	PAGE 4
	Checklist Continues.....	PAGE 5
3.	<b>Introduction</b>	
3.1	Front View.....	PAGE 6
3.2	Back View.....	PAGE 7
3.3	Under LID.....	PAGE 8
3.4	LCD Display Main Menu.....	PAGE 8
4.	<b>Power</b>	
4.1	Power Connection.....	PAGE 9
5.	<b>IOT</b>	
5.1	LAN IOT Connection.....	PAGE 10
6.	<b>Compressor</b>	
	Compressor filter setup.....	PAGE 11
	Compressor setup.....	PAGE 12
	Compressor settings setup.....	PAGE 13
7.	<b>Vacuum Pump</b>	
	Vacuum pump setup.....	PAGE 14
	Vacuum pump line connection .....	PAGE 15
	Vacuum pump Power connection.....	PAGE 16
	vacuum Pump ACE Switch Cable .....	PAGE 17
	Vacuum pump connection Checklist.....	PAGE 18
8.	<b>Booting</b>	
	Power on to boot.....	PAGE 19
9.	<b>Booting Sequence &amp; Troubleshooting</b>	
	Booting Errors.....	PAGE 20
	Booting Errors Continues.....	PAGE 21
10.	<b>IOT ScreenTech Platform (Brief Introduction)</b>	
	LOGIN.....	PAGE 22
	Add repair order.....	PAGE 23
	Device details.....	PAGE 24
	Select Repair and Technician.....	PAGE 25
	Image Upload and glass serial.....	PAGE 26
	Glass to mould placement and machine selection.....	PAGE 27
	Mould to Machine Open and Close lid.....	PAGE 28
	Start Process.....	PAGE 29
	Process Completed.....	PAGE 30
11.	<b>Technical Specification</b> .....	PAGE 31
10.	<b>Customer Care</b> .....	PAGE 31

Ambient operating conditions:  
Ambient temperature - 5°C-35°C  
Humidity - 10-75%



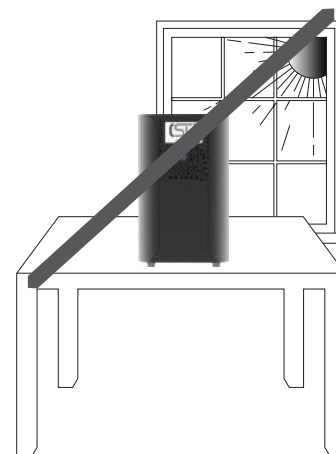
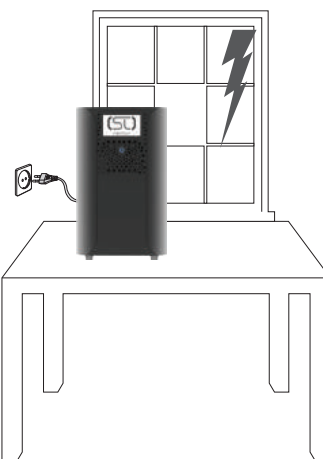
Do not place potted plants or Vases on top of the machine. Moisture entering the unit could lead to dangerous electric shock and can cause equipment damage. In such event immediately disconnect the main plug from the socket

Do not place heavy items on the main lead. Main cable damage can lead to damage of the equipment (fire hazard) and can cause electric shock



Do not remove any equipment panels. The inside of the unit contains sensitive components that may malfunction if interfered with.

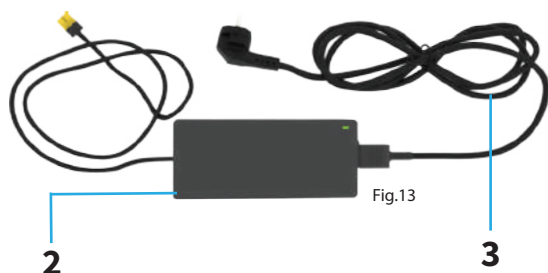
During thunderstorms, disconnect the main plug from the socket. Main voltage peaks due to lightning could damage the unit.



Do not expose the machine to direct sun radiation or other heat sources. This could lead to overheating and malfunction the Machine

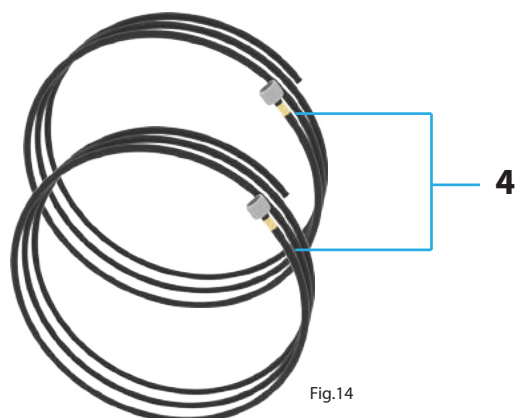


1. AirTech ☐



2. C14 Power Cable Plug ☐

3. Power Adapter ☐



4. 2 x PVC air Pipe Tubing ☐ ☐

5. Compressor ☐

6. Air Filter ☐

7. Pressure Gauge ☐

8. 1/4" to 1/8" Fitting ☐

9. 2 x Open/Close Valve ☐ ☐

10. Muffler filter ☐

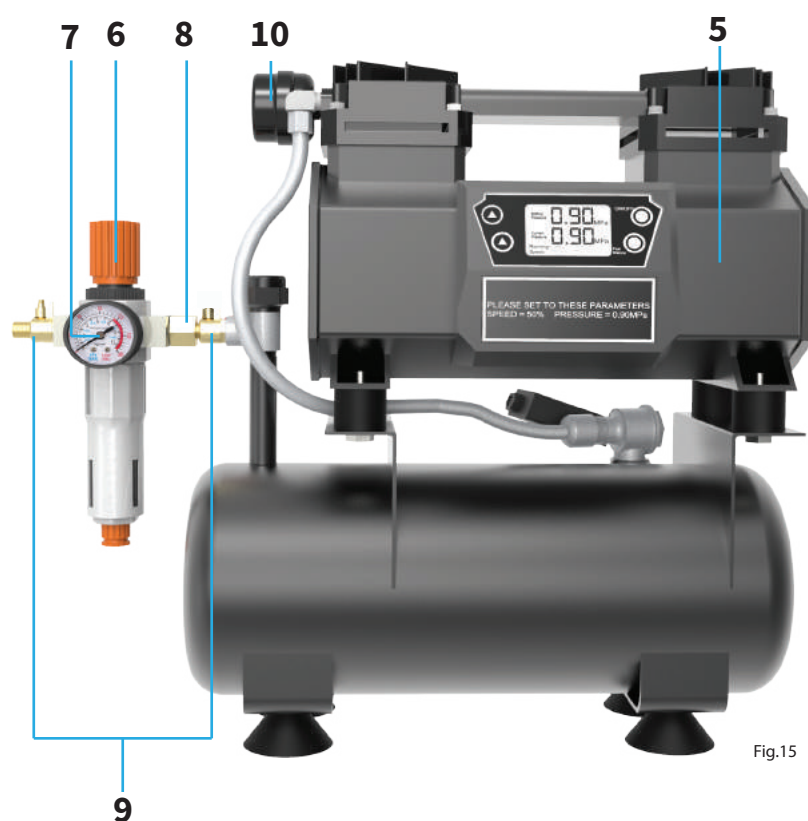
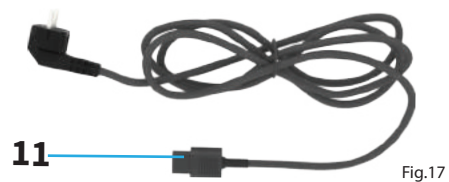


Fig.15



10. Vacuum Pump ☐



11. C14 Power Cable Plug ☐



12. Vacuum Pump Oil ☐



- 1.** LID
- 2.** Chamber plate
- 3.** LCD touch screen display
- 4.** User interface button  
Press to Open and close lid  
Press to accept settings
- 5.** Chamber O-ring
- 6.** Chamber
- 7.** Airbag vacuum port O-ring

Fig.19

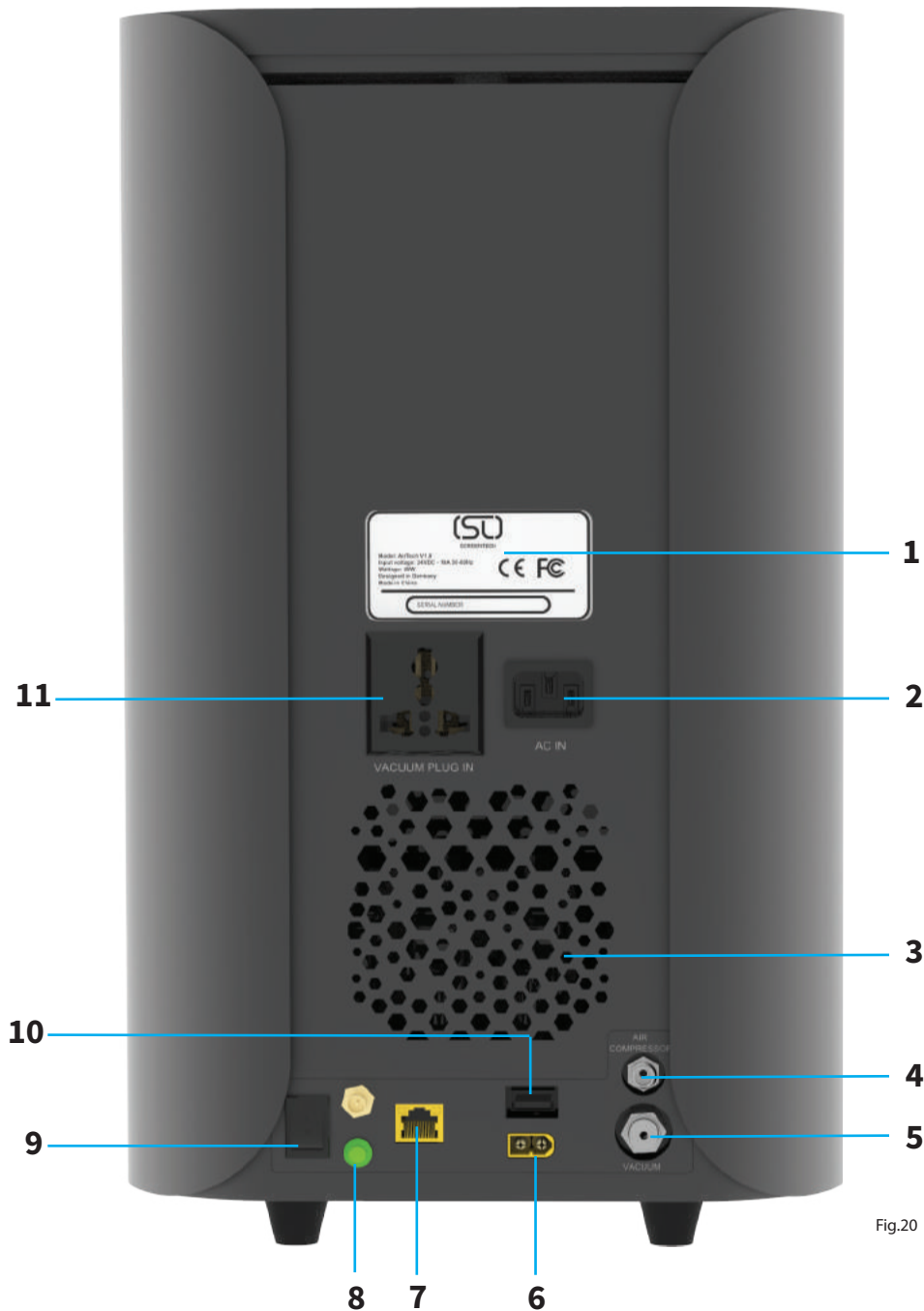


Fig.20

- 1.** Identification machine tag
- 2.** AC 110-220VAC power IN from mains
- 3.** Air ventilation exhaust grill
- 4.** Air Compressor input. Air PVC pipe from compressor to be connected to this port
- 5.** Vacuum input line. Air PVC pipe from Vacuum pump to be fastened to this port
- 6.** 24V DC power inlet port from power supply
- 7.** Lan connection point for IOT connection. This port allows the AirTech to be connected the in the Internet and controlled via the ScreenTech Platform
- 8.** WPS enable button.
- 9.** AirTech power toggle switch
- 10.** USB interface connection port
- 11.** Vacuum pump plug connection plug. Vacuum pump to be directly connected to the plug point



Fig.21

1. LID Magnetic sensor
2. Safety LID perimeter switch bracket
3. Latex Airbag

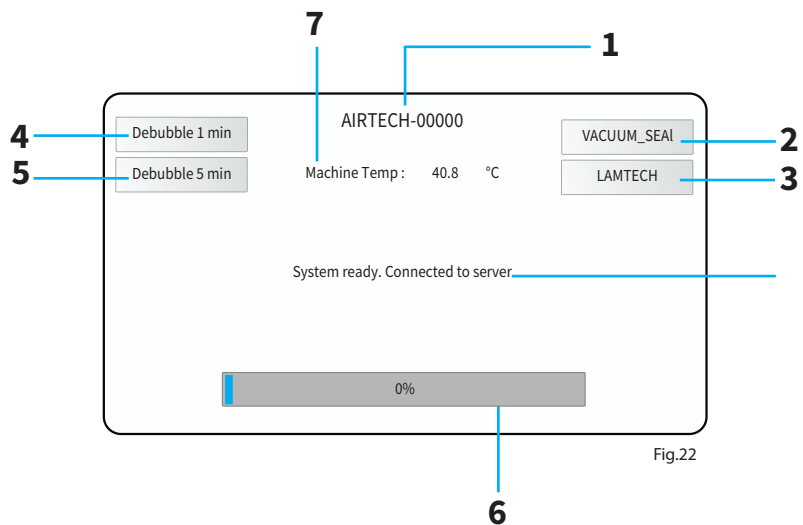
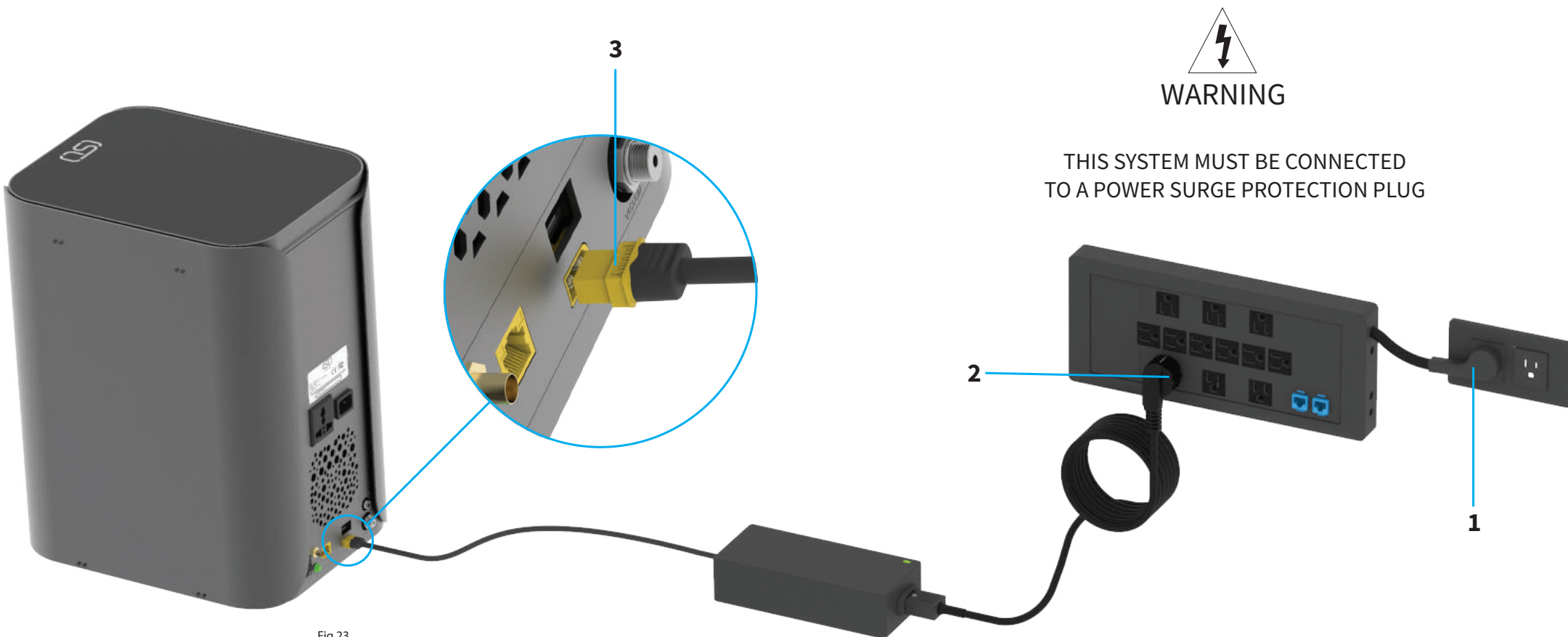


Fig.22

1. Machine ID and Serial number
2. Vacuum seal option. Only used when LID is in open position
3. LamTech Option selection. Only used when LID is in open position
4. Debbubble 1 minute selection. Only active when LID is in closed position and IOT active
5. Debbubble 5 minute selection. Only active when LID is in closed position and IOT active
6. Machine Percentage display bar. Active when a process is running
7. Machine chamber temperature read out





- STEP 1** Connect the power cable to the wall socket
- STEP 2** Plug the C13 socket into the power surge protection plug point
- STEP 3** Insert the DC jack into the AirTech power inlet

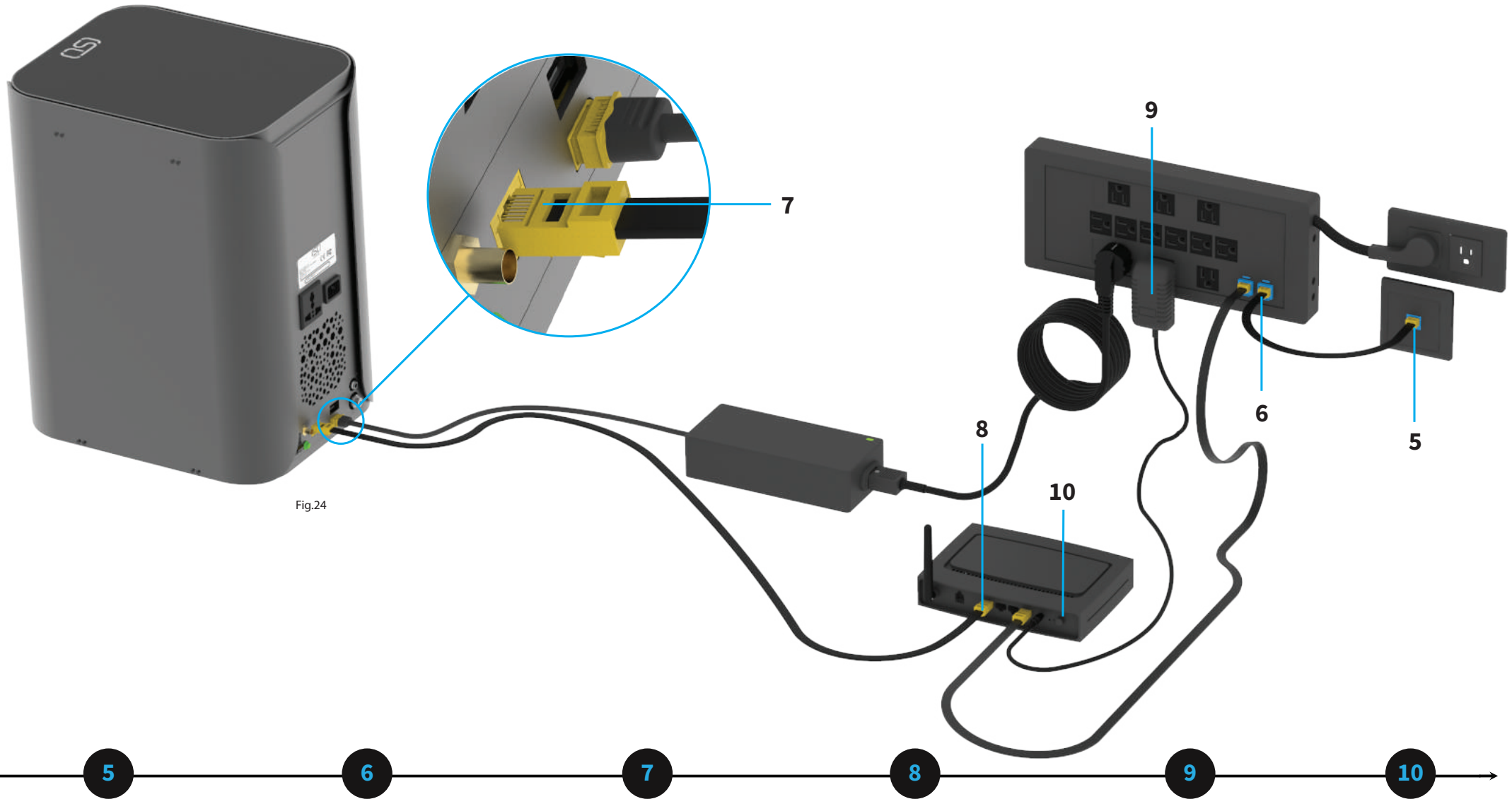


Fig.24

5  
Connect the LAN cable into the ethernet wall socket port from the ISP

6  
Connect the LAN cable to the surge protector

7  
Connect the LAN cable into the ethernet port of the AirTech

8  
From the AirTech LAN connect to the modem directly

9  
Plug in the Switching power supply to the Surge Protector

10  
Power on the modem

11

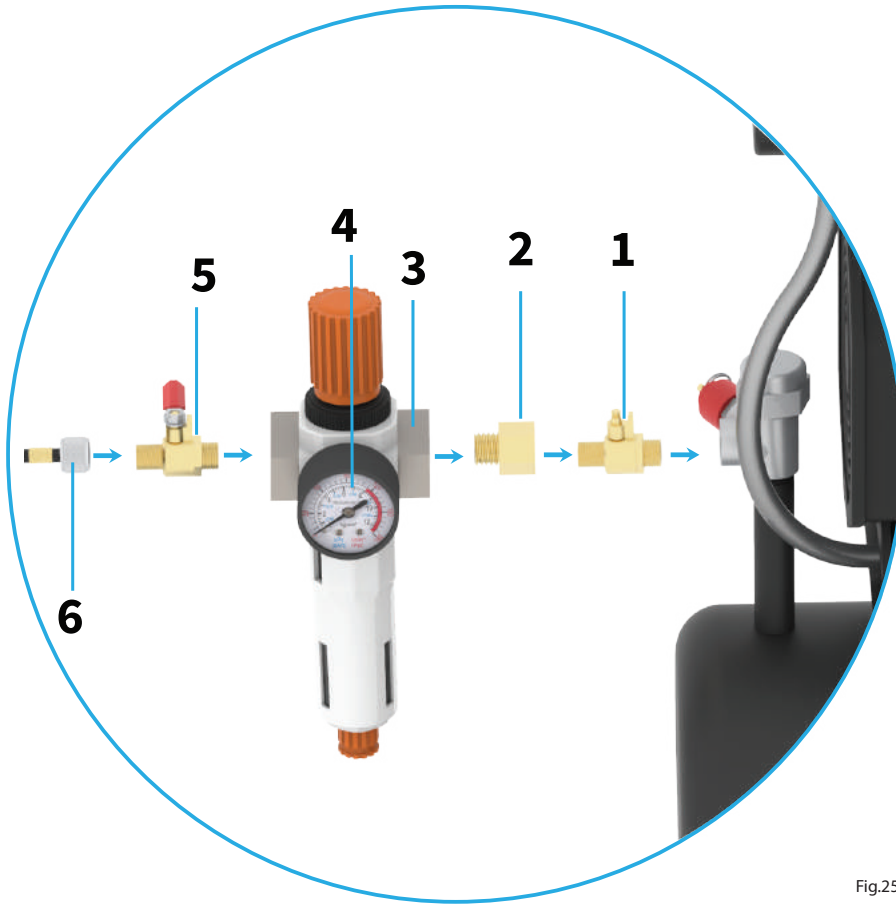


Fig.25

- 1.** Fasten the open/Close Valve to the compressor outlet air port.
- 2.** Locate the 1/4" to 1/8" Fitting and fasten to the other end of the open/Close Valve.
- 3.** Locate the Air Filter and fasten to the 1/8" male side of the fitting.
- 4.** Locate the Pressure Gauge and fasten to the air filter
- 5.** Locate the other Open/Close Valve and fasten to the air filter as shown in Figure 25.
- 6.** Locate the PVC Pipe air Tubing and fasten to the male end of the Open/Close Valve.



Fig.15



Fig.26

12

Locate the Filter Muffler and fasten to the compressor as indicated

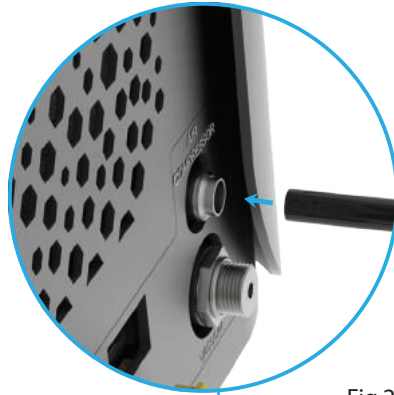


Fig.27

13

Locate PVC Air pipe from Figure 28 and insert it into the AirtTech compressor inlet port.

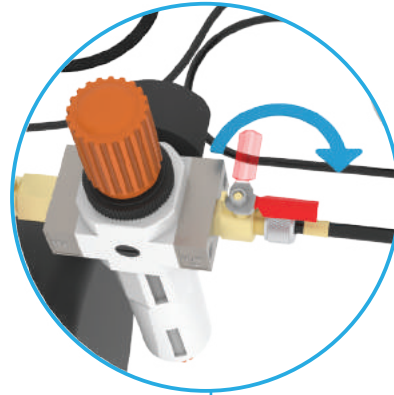


Fig.28

14

Open the air valve as indicated in Figure 28

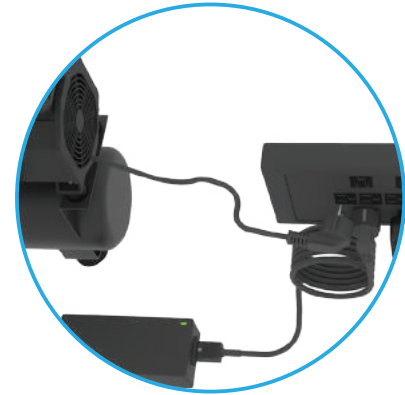


Fig.29

15

Plug in air compressor plug into the wall socket as indicated in Figure 29

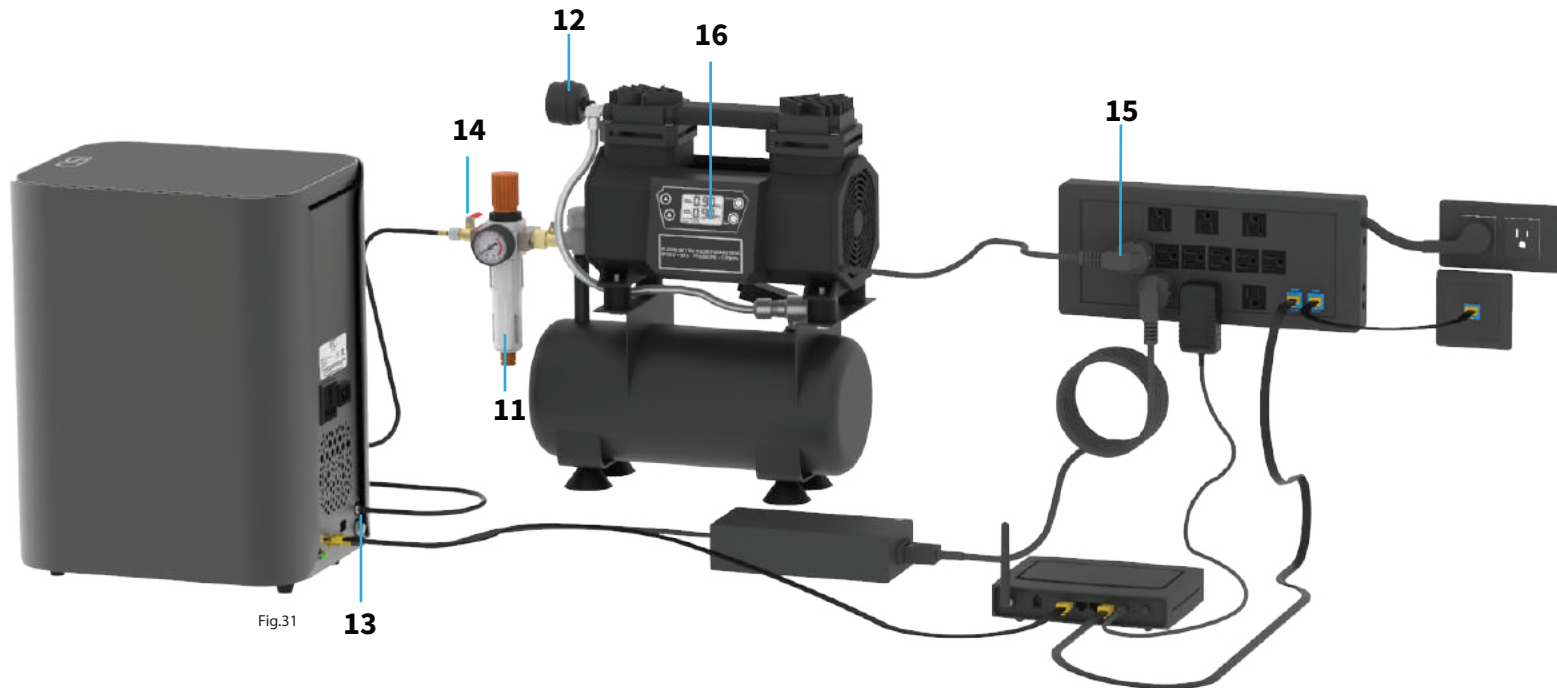


Fig.31

13

16



Fig.30



17

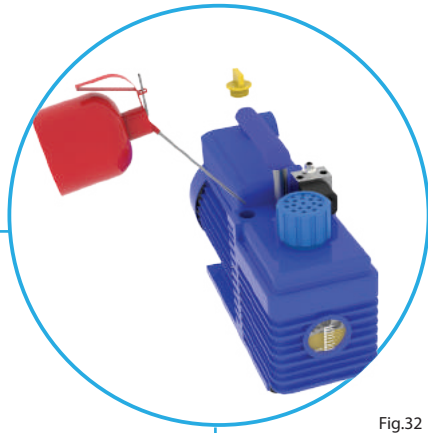


Fig.32

Once the vacuum pump has been removed from the packaging locate the vacuum pump oil and proceed as follows,

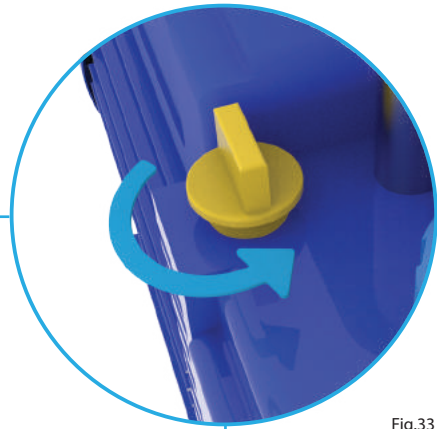


Fig.33

Loosen yellow oil cap located in Figure 33.

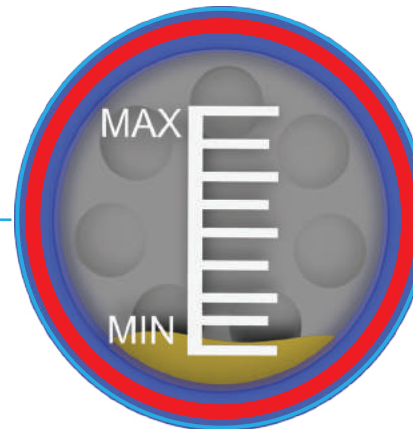


Fig.34

Begin to fill with oil and monitor the oil gauge.

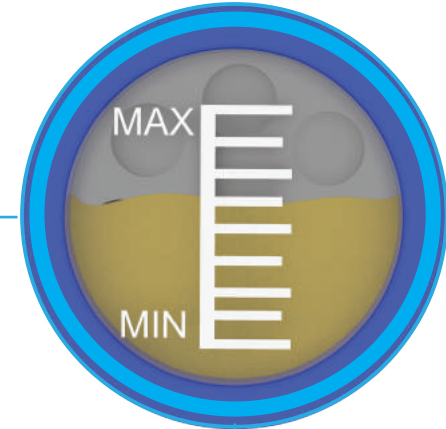


Fig.35

Do not over fill the vacuum pump. Continuously monitor the gauge. Ensure to keep the oil fill level within the centre parameters of the meter.

18



Fig.36

Locate the PVC tubing pipe.

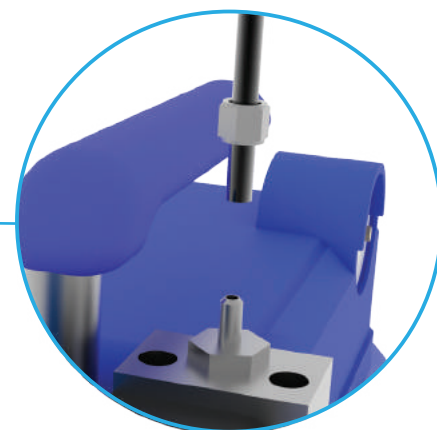


Fig.37

Remove the Vacuum line nut from the vacuum pump vacuum line then feed the pipe through the nut as indicated in Figure 37.

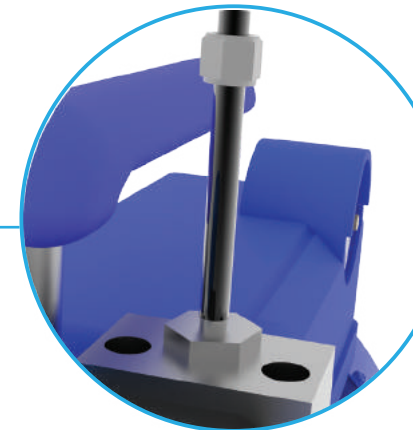


Fig.38

Push the sleeve of the pipe over the inlet shaft port as indicated in Figure 38

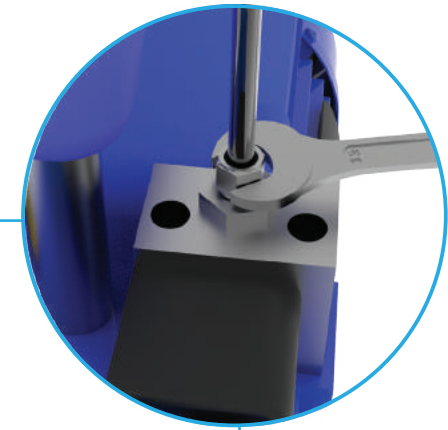


Fig.39

Once the pipe is secured over the inlet shaft fasten the nut as indicated in Figure 39 using a wrench.



Fig.45



Fig.40

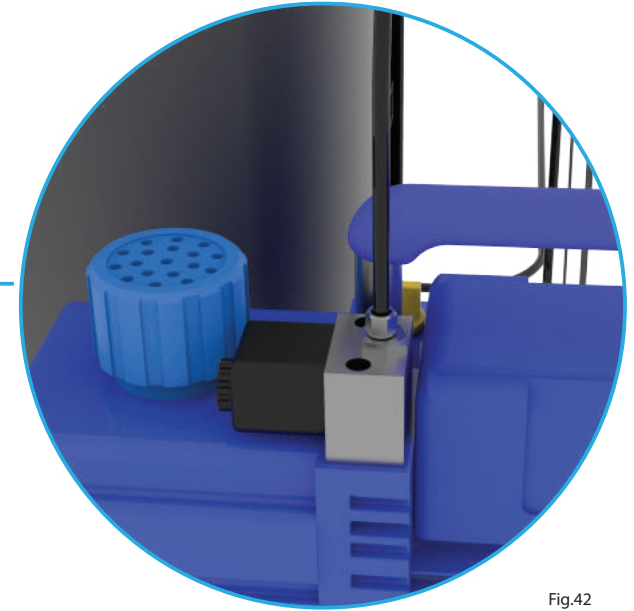


Fig.42

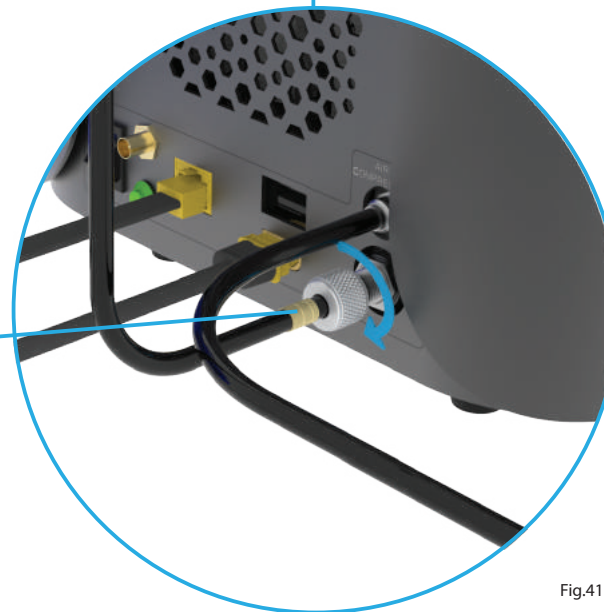


Fig.41

Connect the vacuum pine pipe to the AirTech Vacuum line port. Fasten the pipe knob as indicated in Figure 41

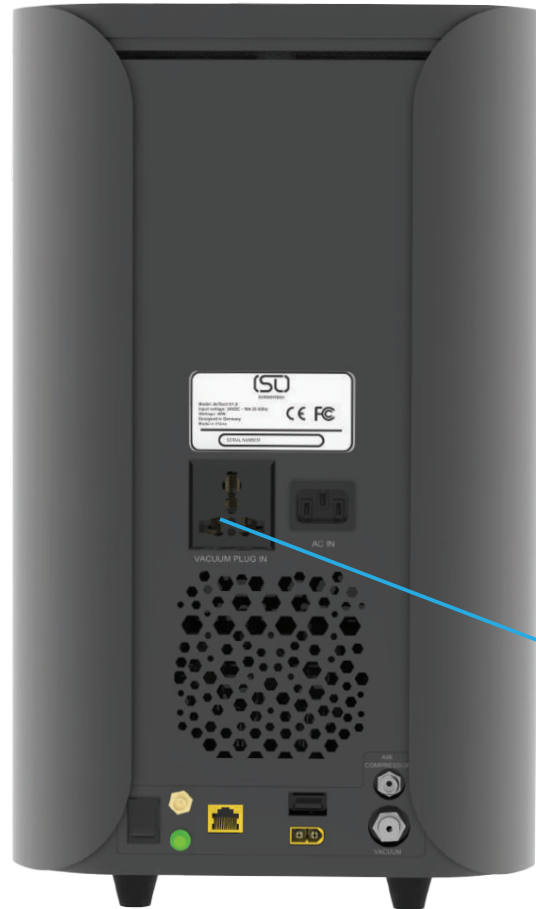


Fig.46

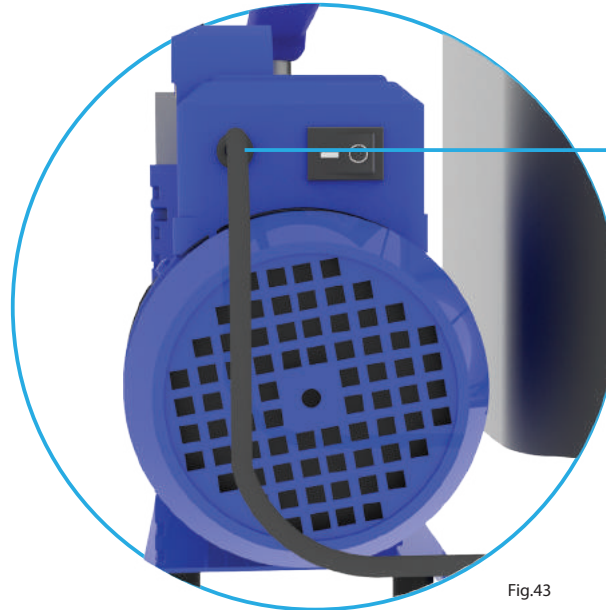


Fig.43

Connect the power cable from the Vacuum pump to the Vacuum Plug In port of the AirTech

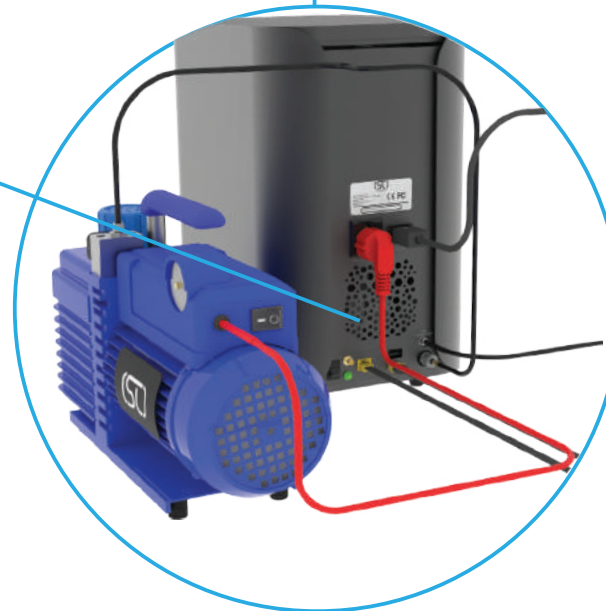


Fig.44





Fig.47

Locate the C14 Power Plug Cable and connect the one end to the AC in port of the AirTech and the other end of the cable to the wall plug point

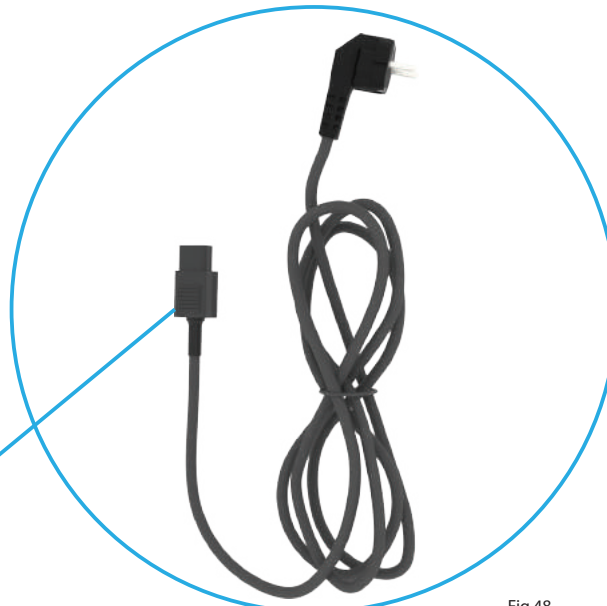


Fig.48

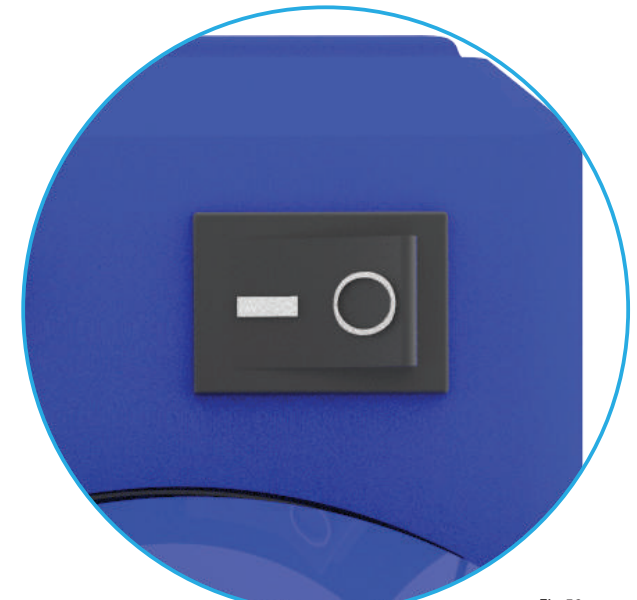


Fig.50



Fig.49



Fig.51



22

1. Ensure that there is enough Vacuum pump oil in the vacuum pump ☐
2. Connect the vacuum pipe to the vacuum pump as shown on page 11 in figure 37 ☐
3. Connect the vacuum line pipe from the vacuum pump to the AirTech vacuum inlet port as indicated on page 12 Figure 41 ☐
4. Connect the vacuum pumps power cable to the AirTech Vacuum Plug In port as indicated on Page 12 Figure 44 ☐
5. Locate the C14 Power Cable Plug and connect as indicated on Page 13 Figure 51 ☐
6. Ensure the vacuum pump power switch is in the On position as indicated on page 13 Figure 50 ☐

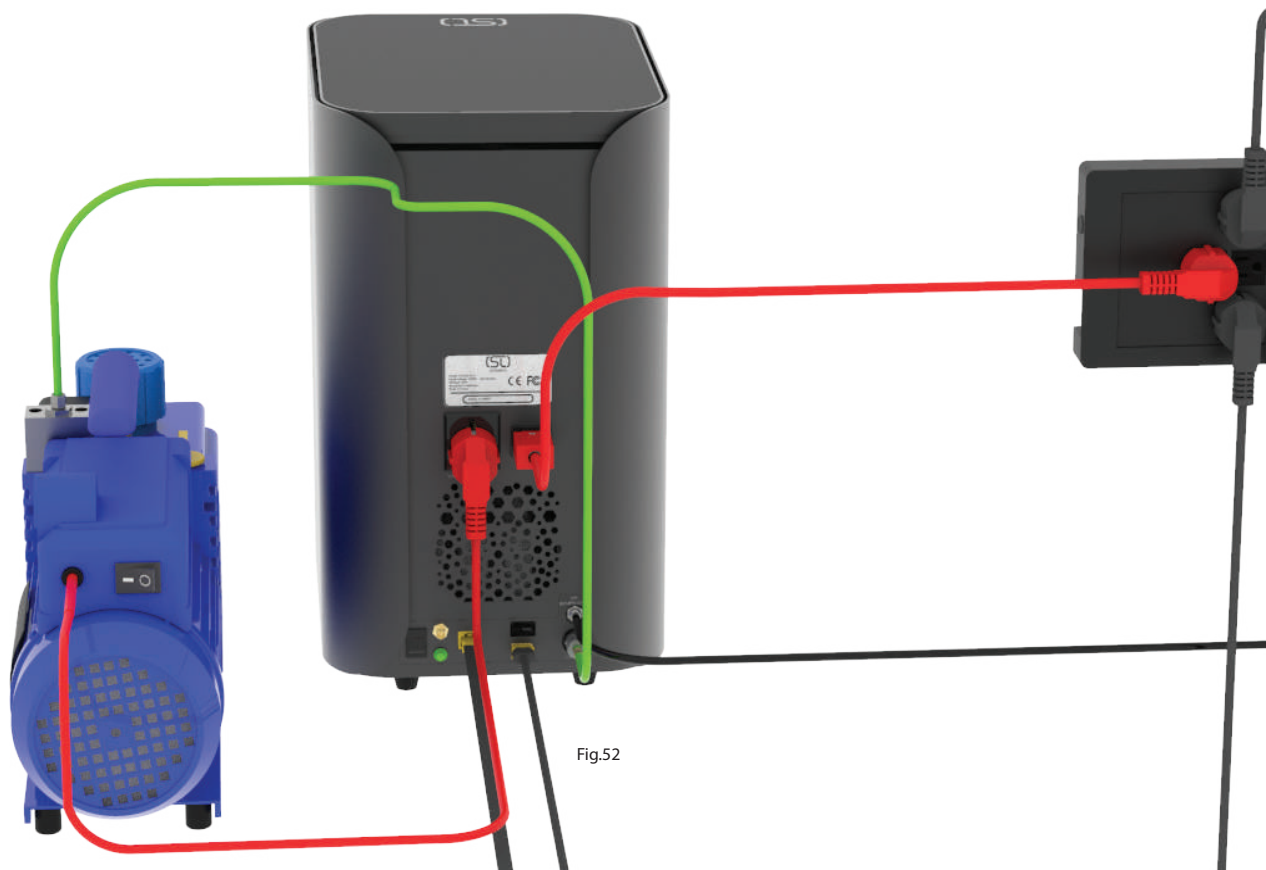


Fig.52

23



Toggle the power switch in the ON position to Initiate the booting sequences

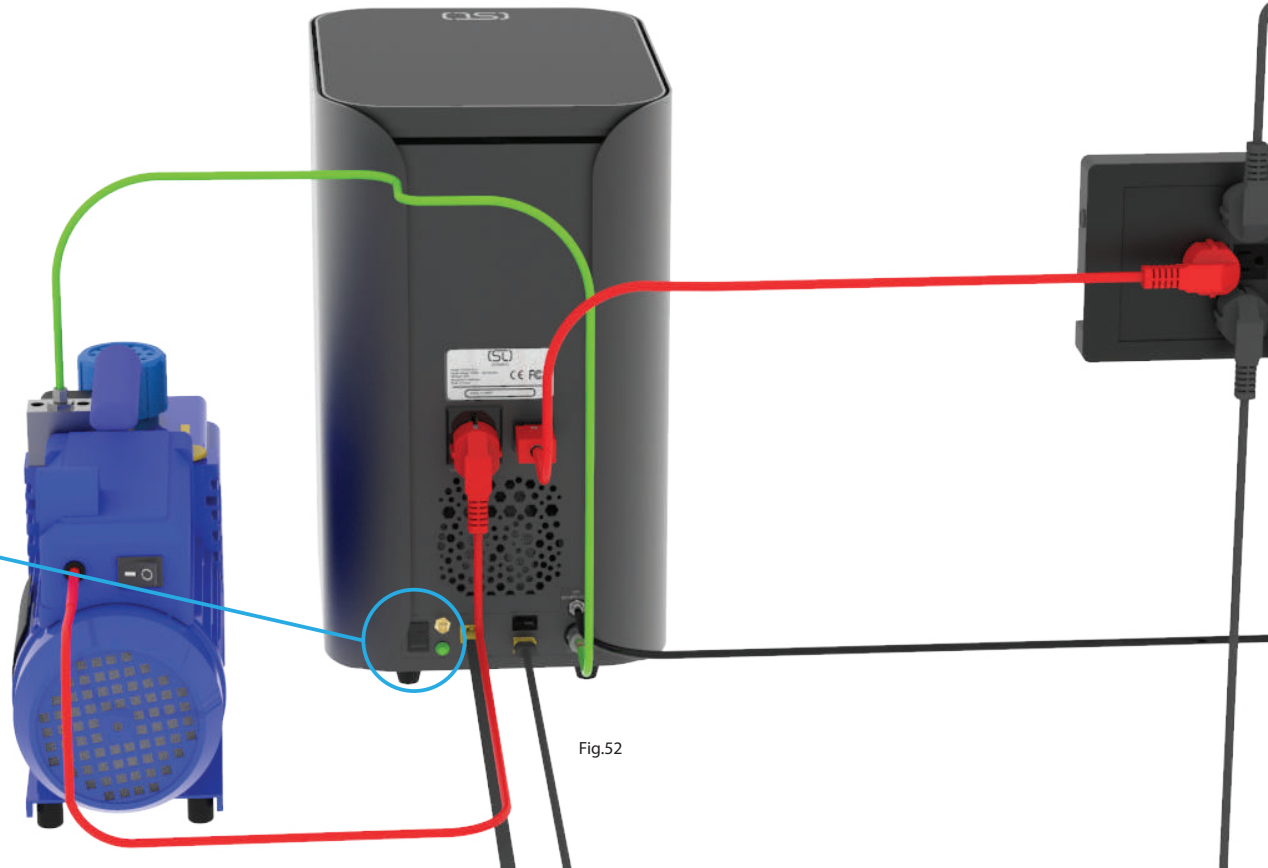
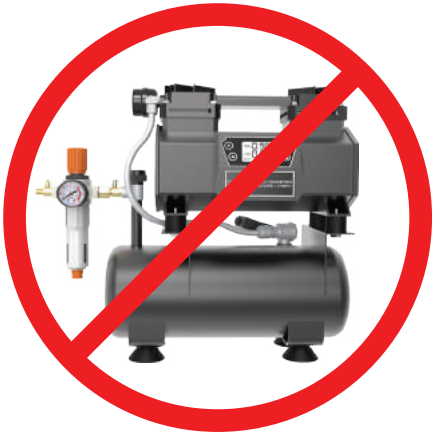


Fig.52



System standby waiting

No Internet connection



ERROR, CHECK COMPRESSOR

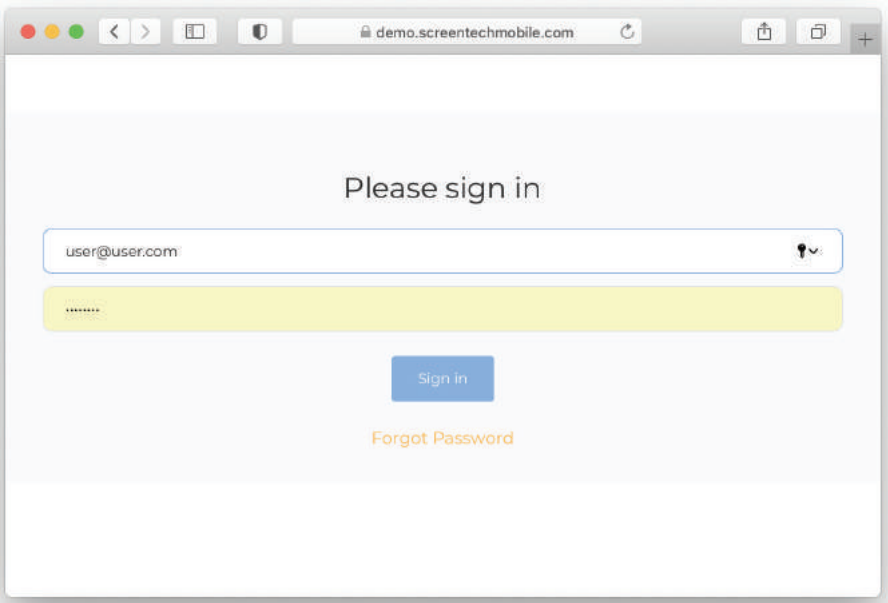
CHECK VACUUM PUMP  
CHECK AIR COMPRESSOR



ERROR, SYSTEM NEEDS SERVICE

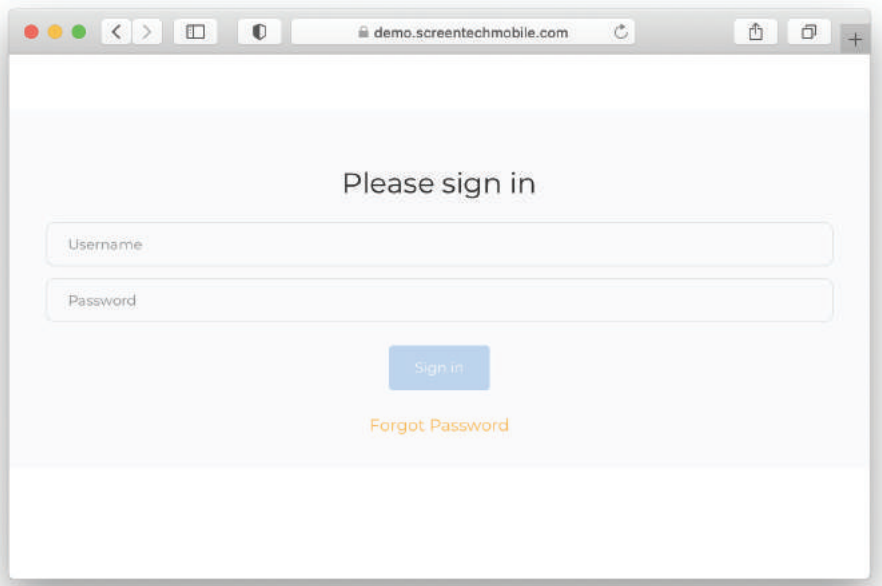
CONTACT SUPPORT

1



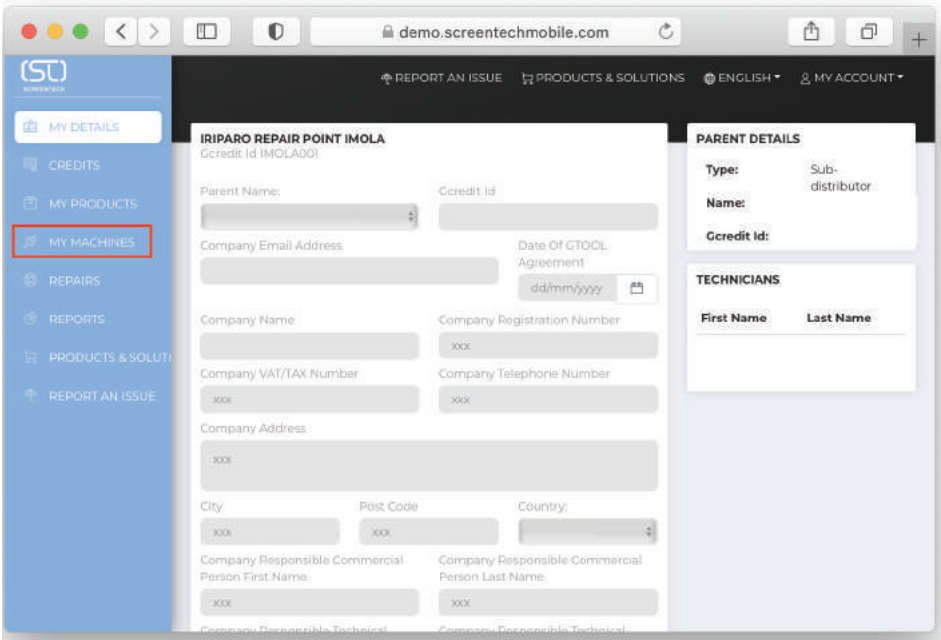
Open your browser and navigate to <https://demo.screentechmobile.com>

2



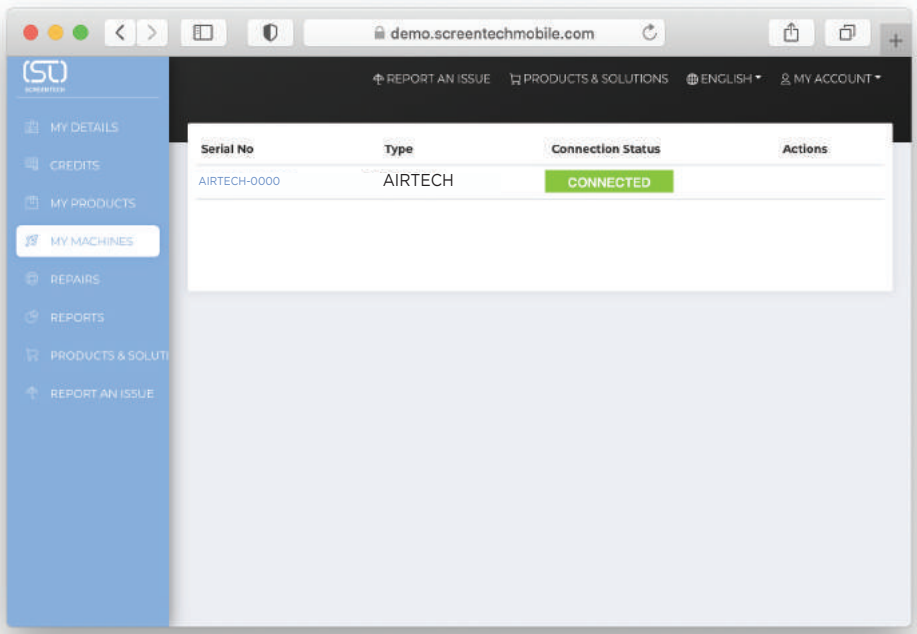
Input your username provided from your ScreenTech distributor

3



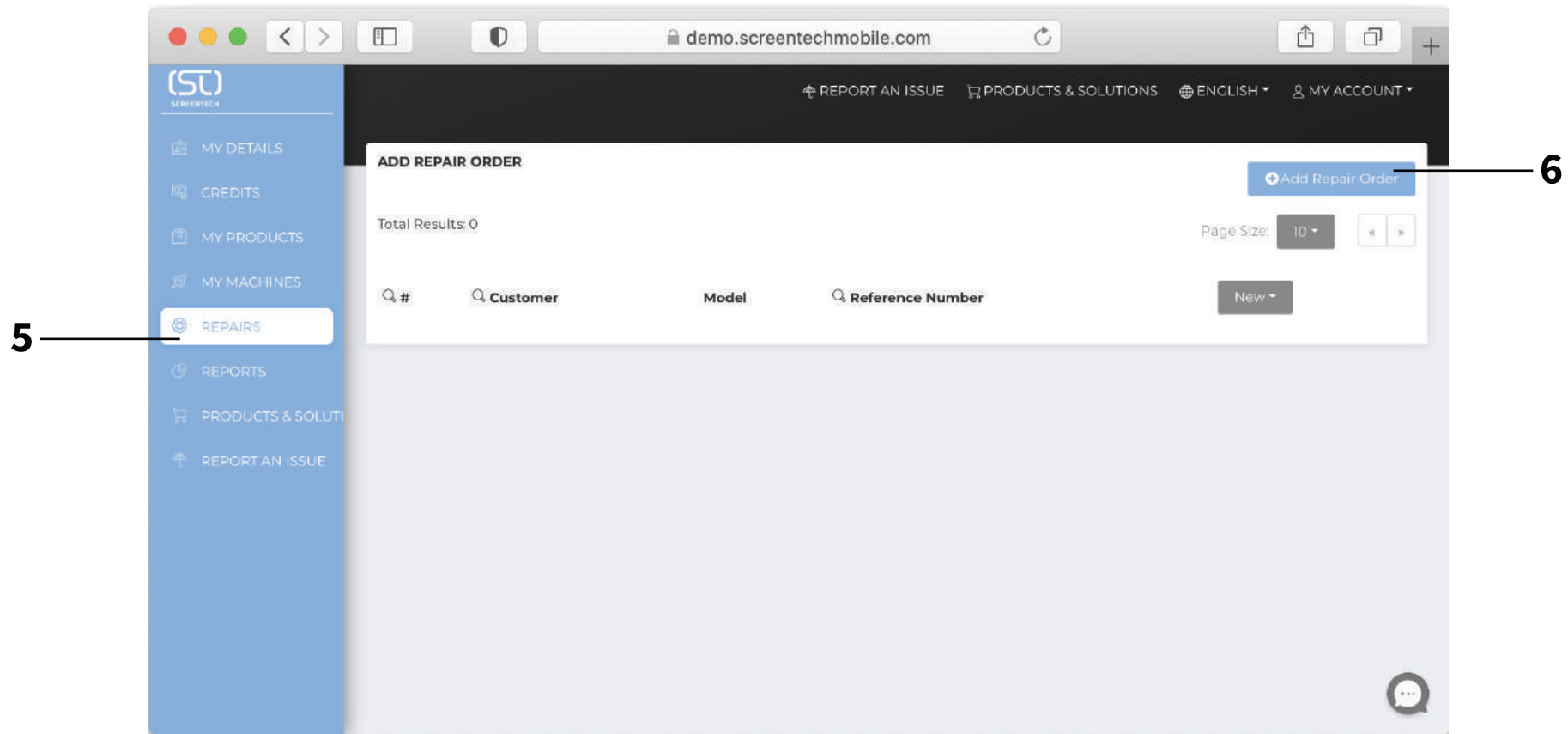
Select My Machines

4

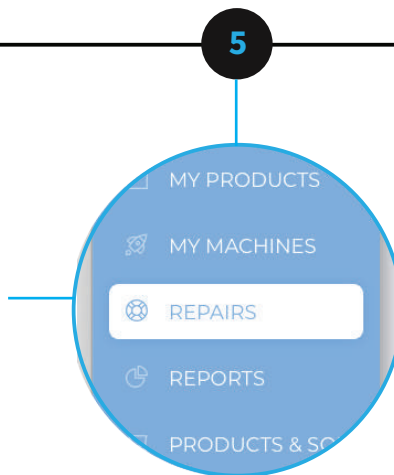


In this list the AirTech will show that its connected to the IOT platform

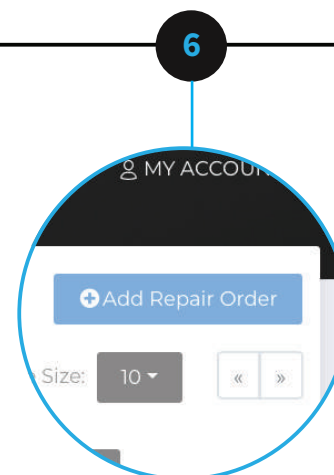


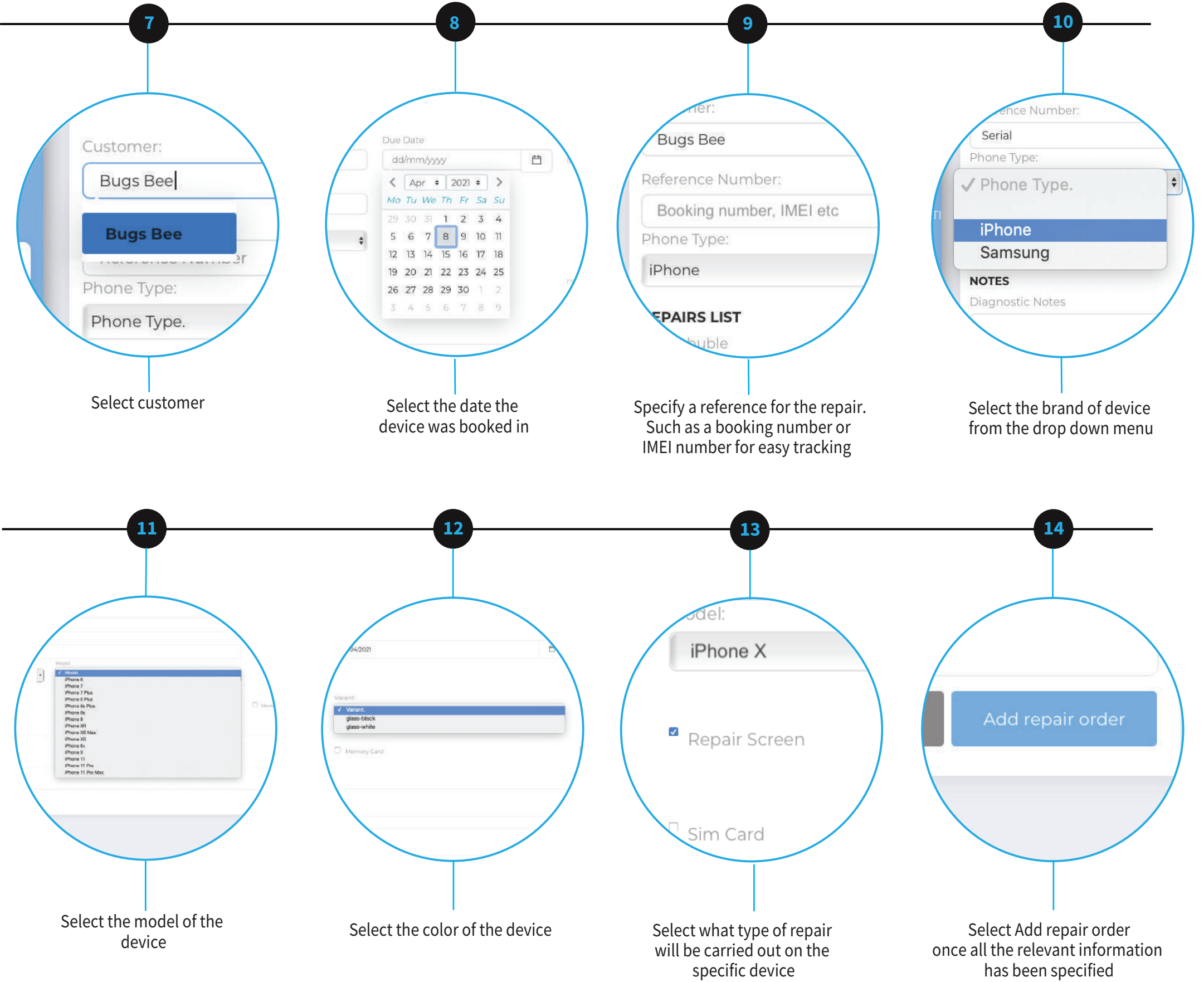


Select Repairs located in the main menu



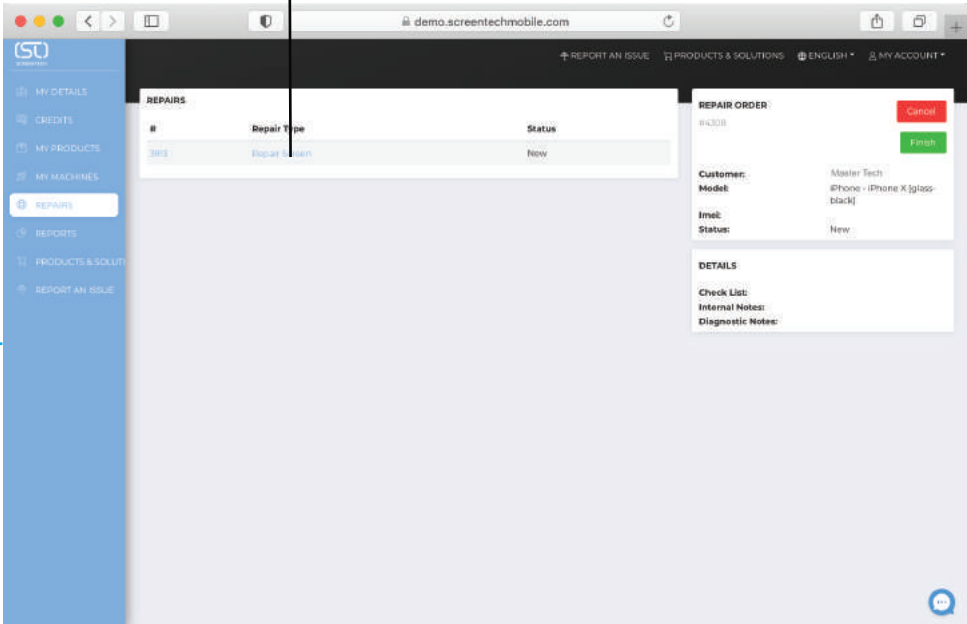
Select Add Repair Order located in the top right hand corner of the screen



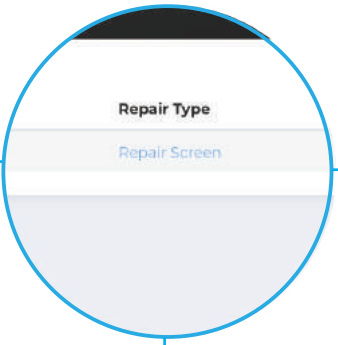




11

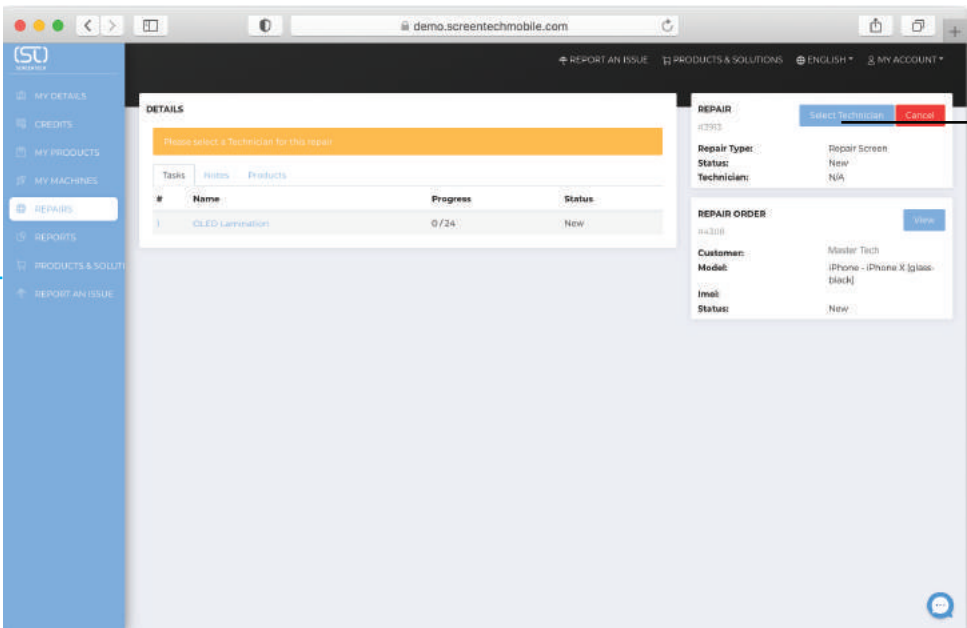


15

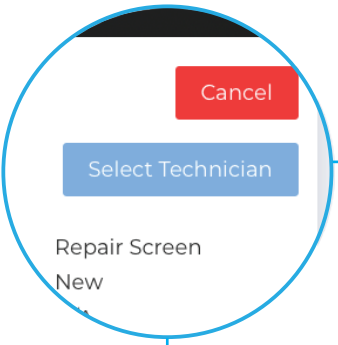


Select Repair Screen

12

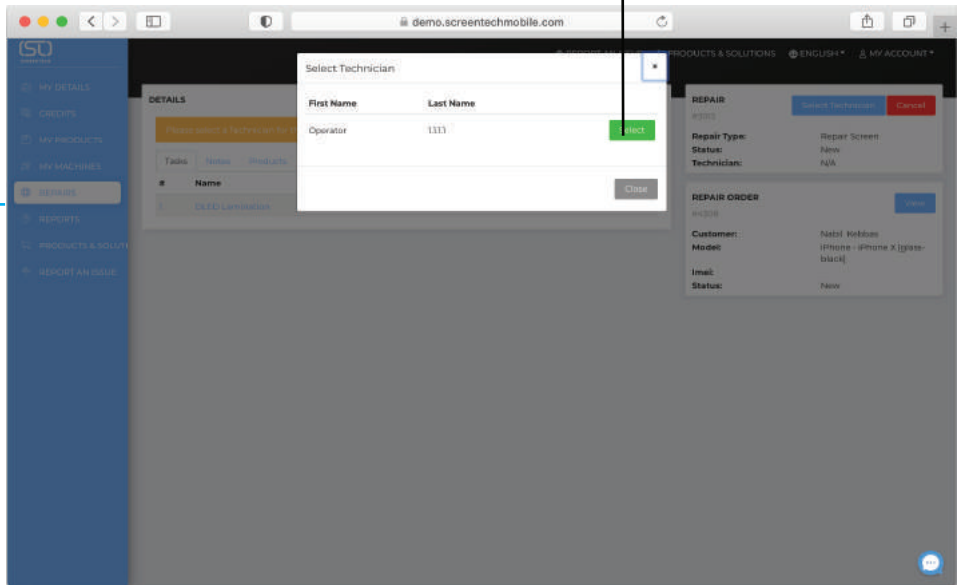


16

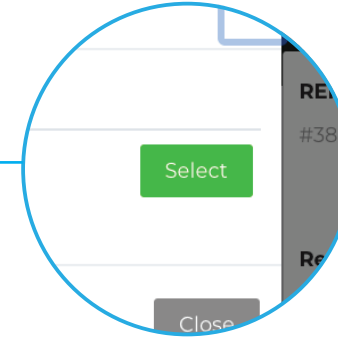


Select Technician

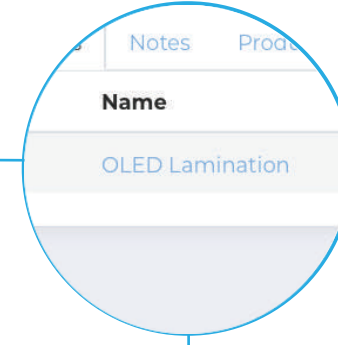
14



17

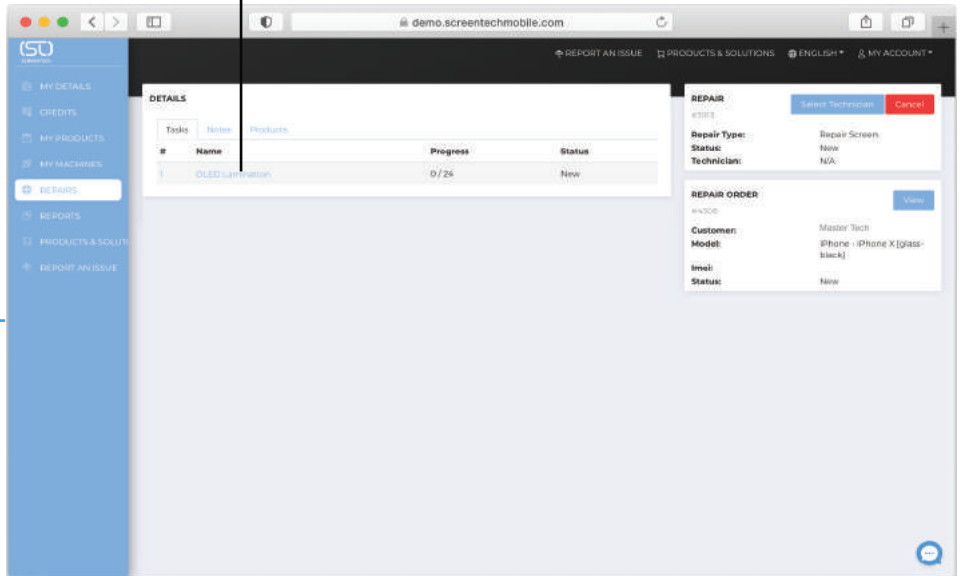


18

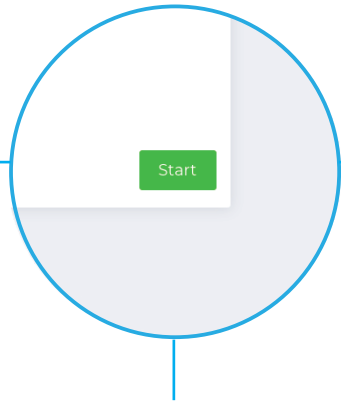


OLED Lamination

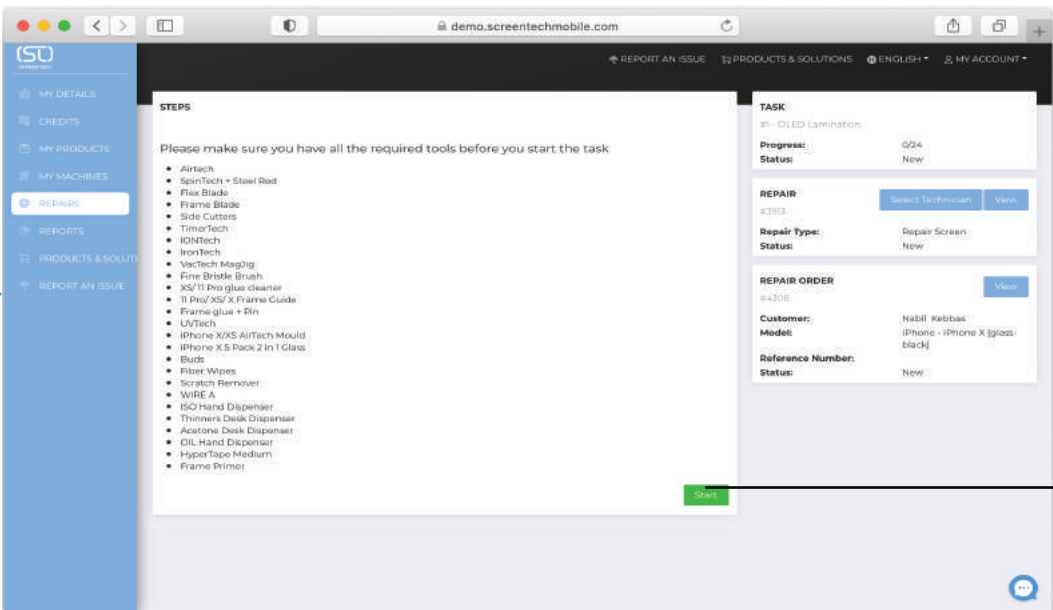
15



19

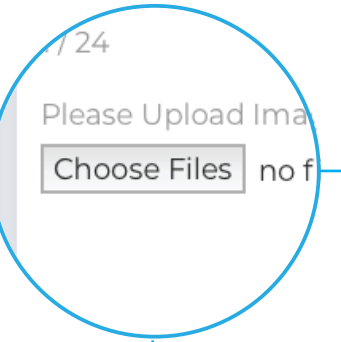


Make sure you have all the required tools. Press Start

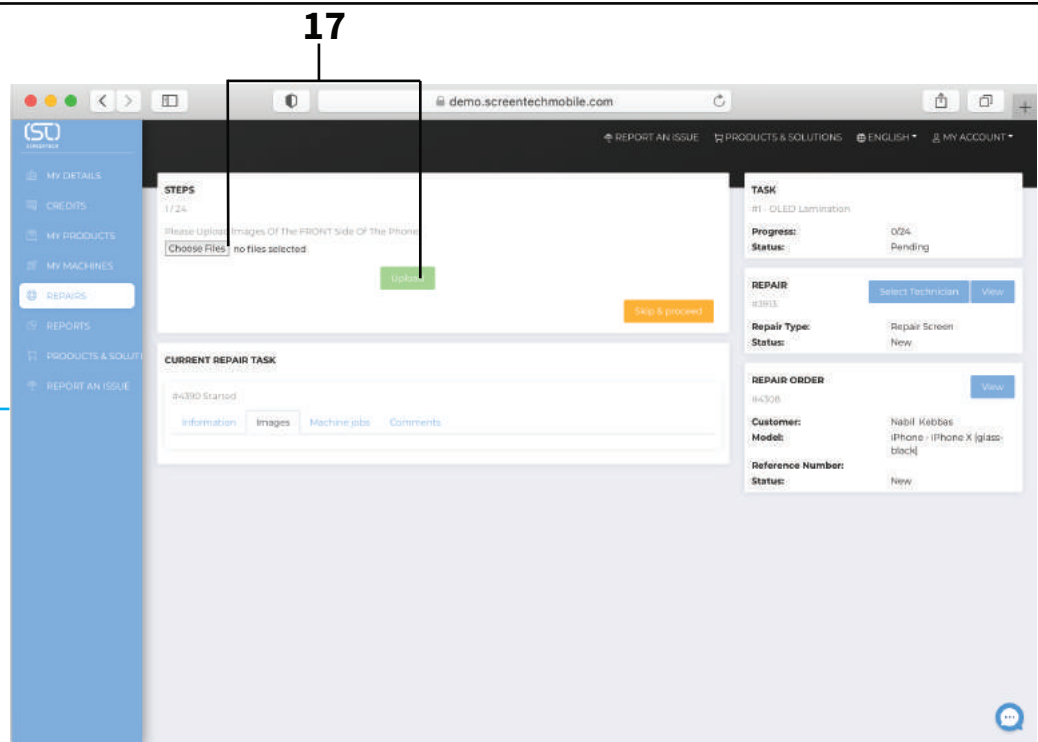


16

20

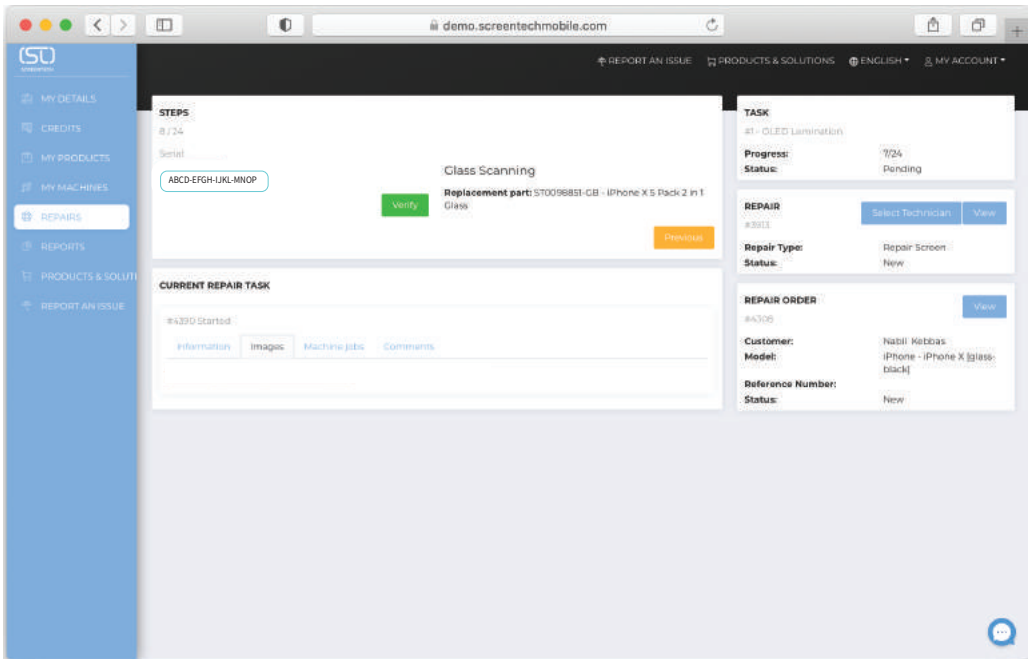
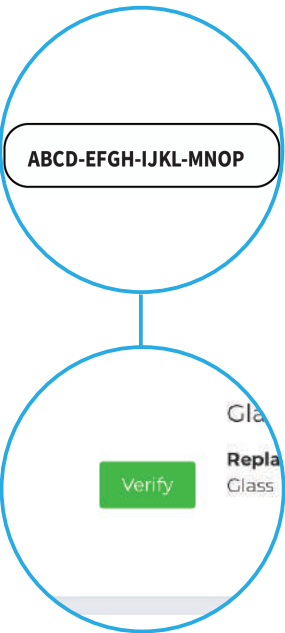


UPLOAD an image of the display

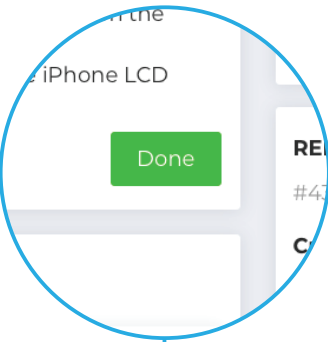


17

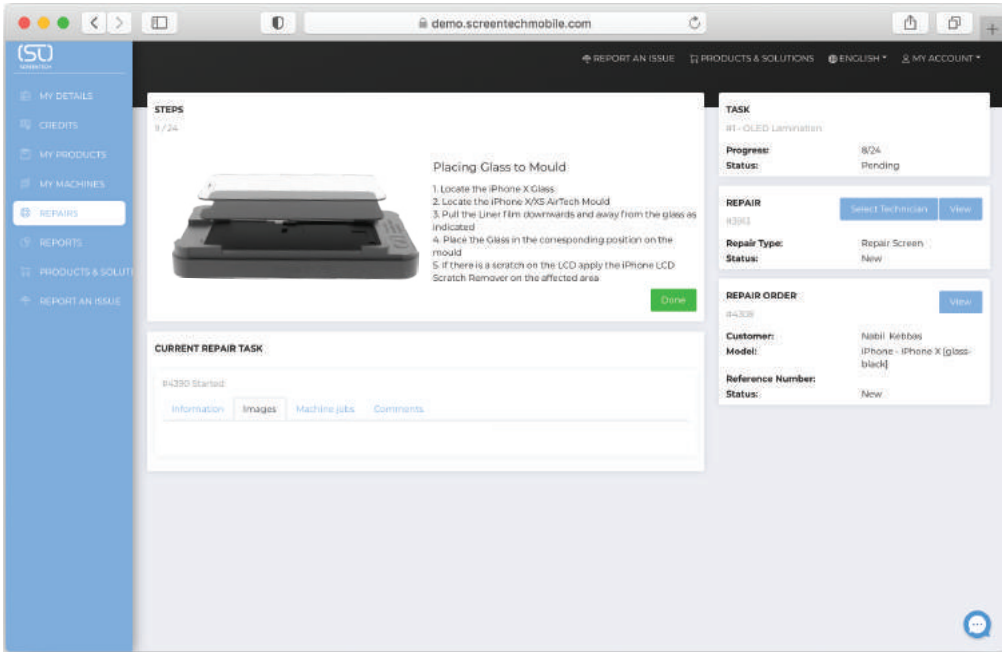
21



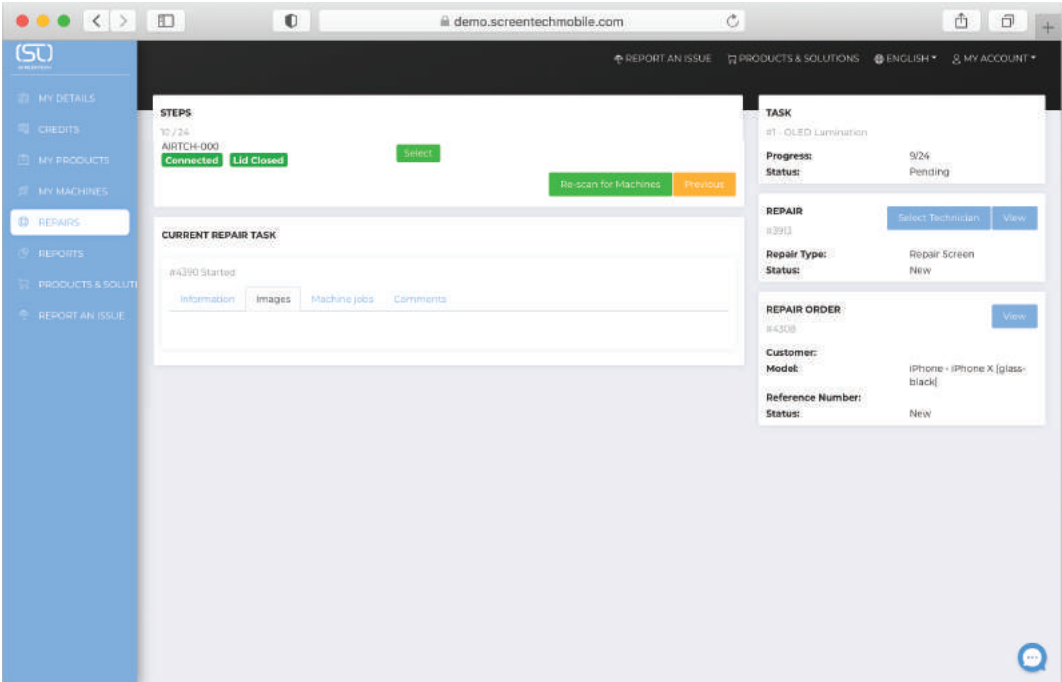
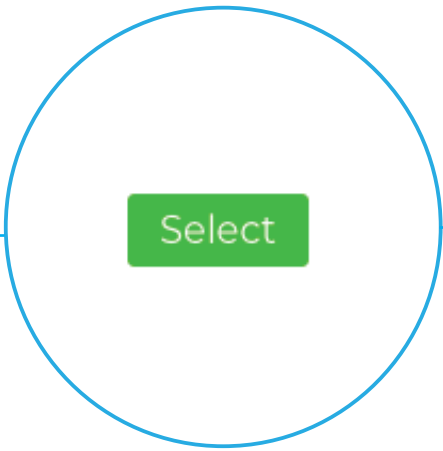
22



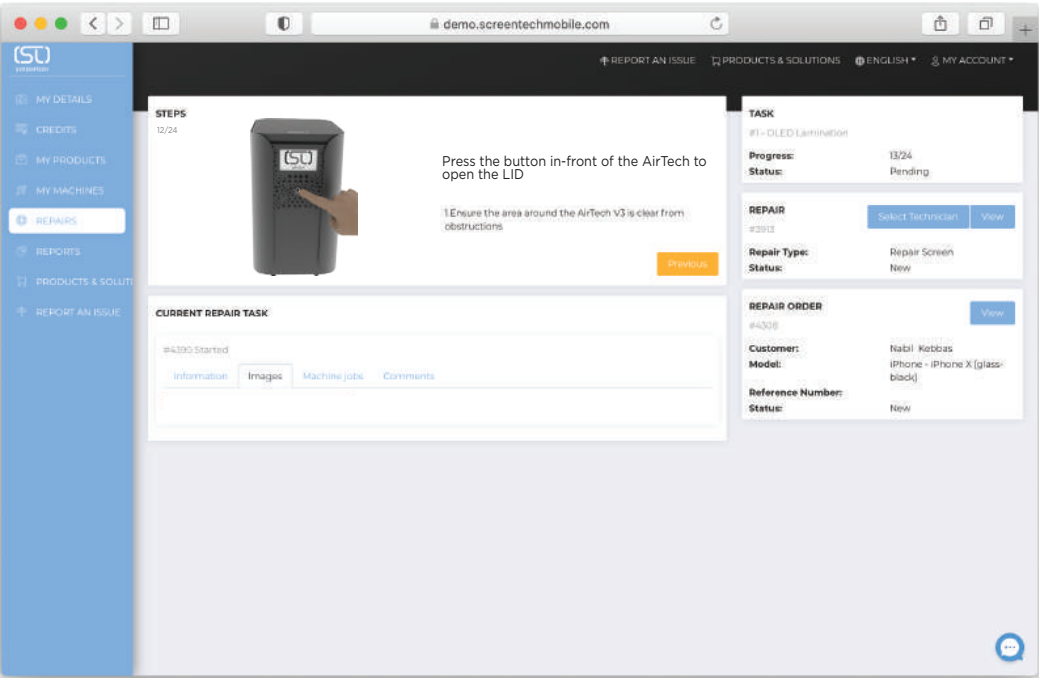
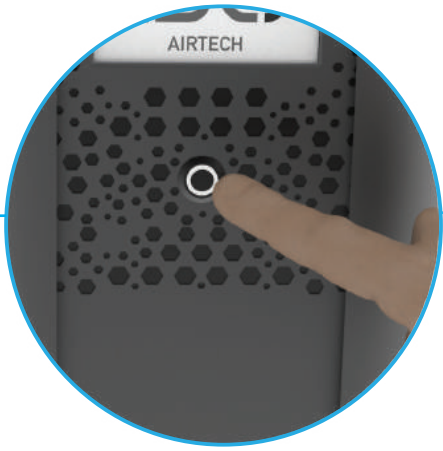
Place the OLED into the Mould and Press Done



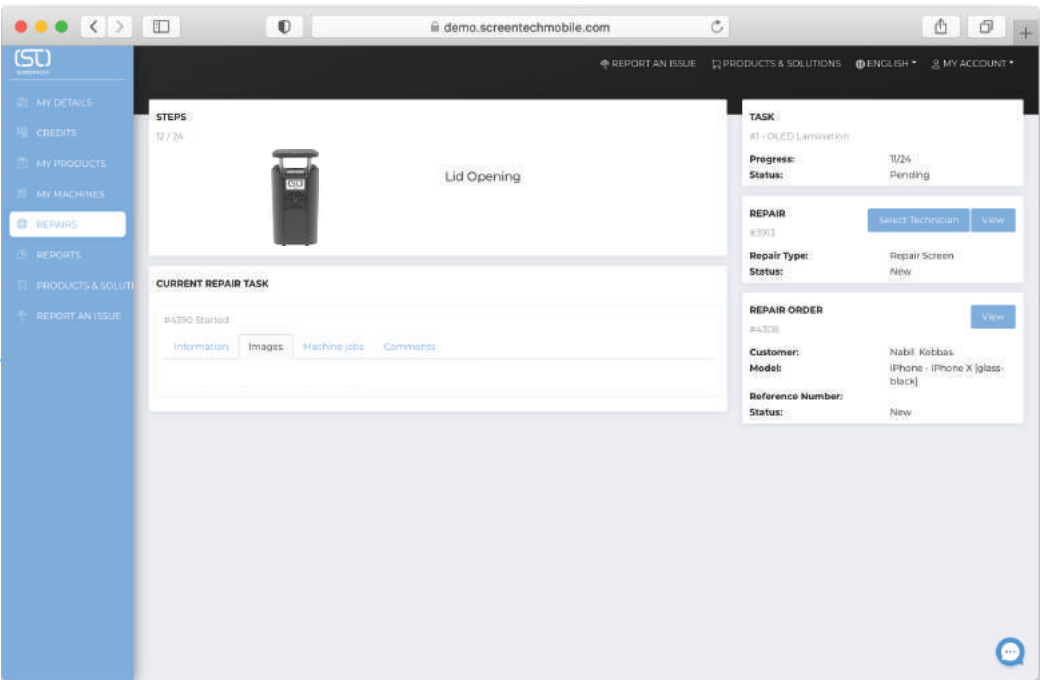
23



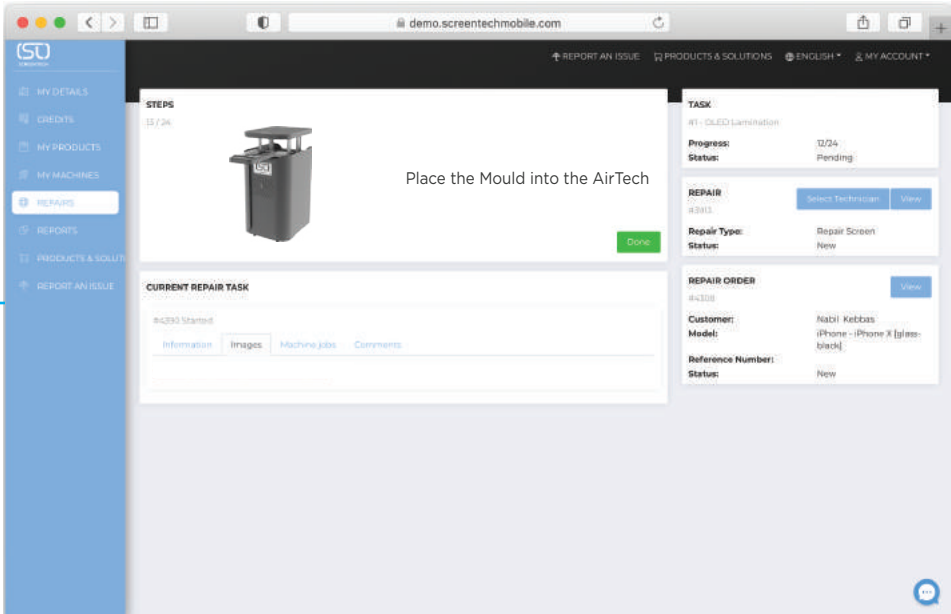
24



25



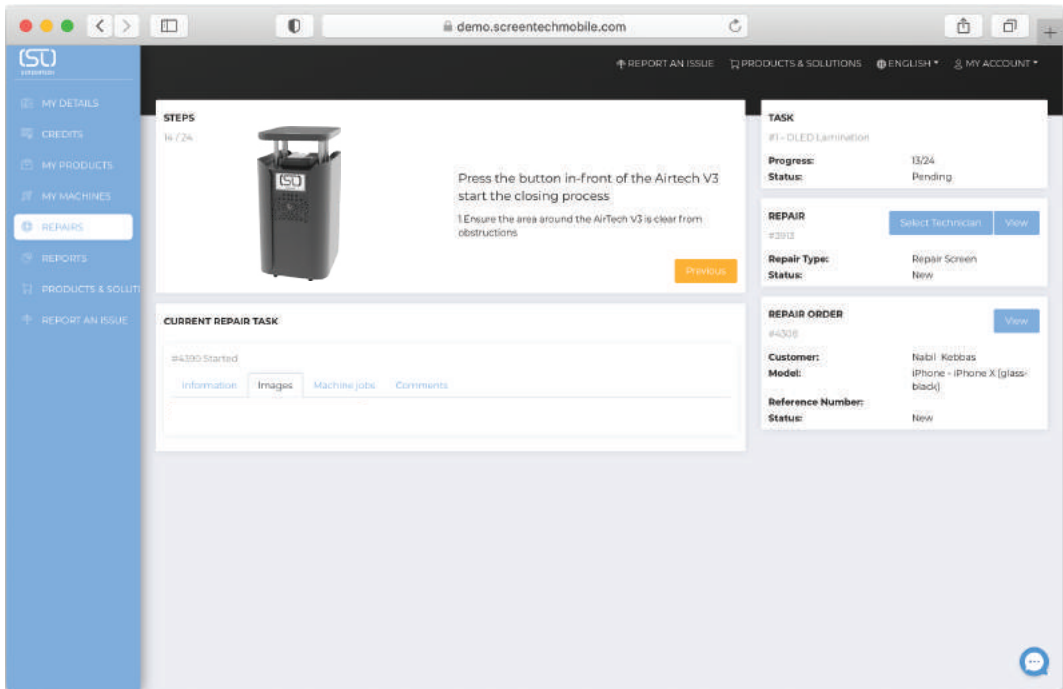
26



27



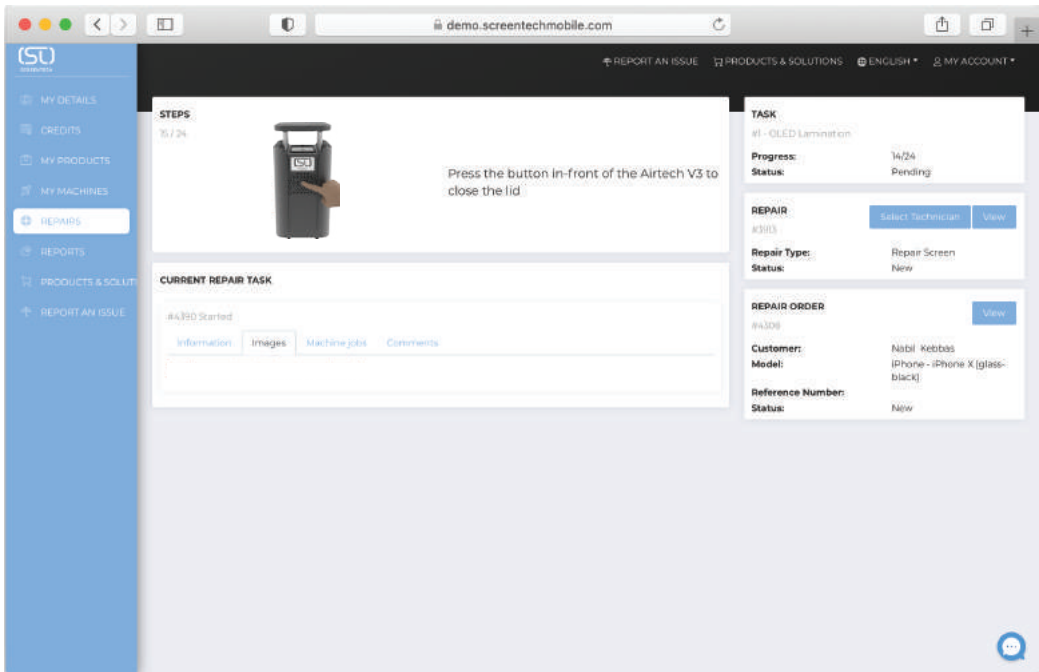
Press once to initiate the closing process.  
The Chamber plate will be lowered.



28

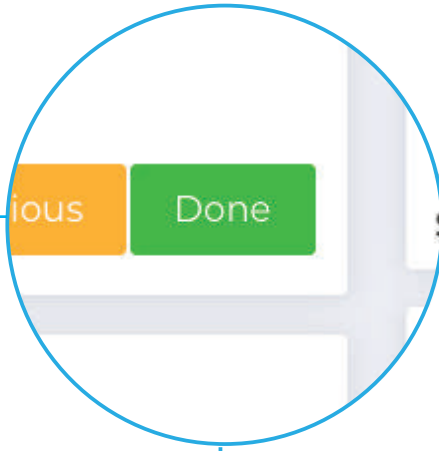


Press to close the Lid





29



Debubble 1 min

Debubble 5 min

AIRTECH-00000

Machine Temp: 40.8 °C

Piston Lamination selected

Vacuum time = 000

Pressure Piston hold = 000

Piston pressure = 000

Debubble 1 = 000

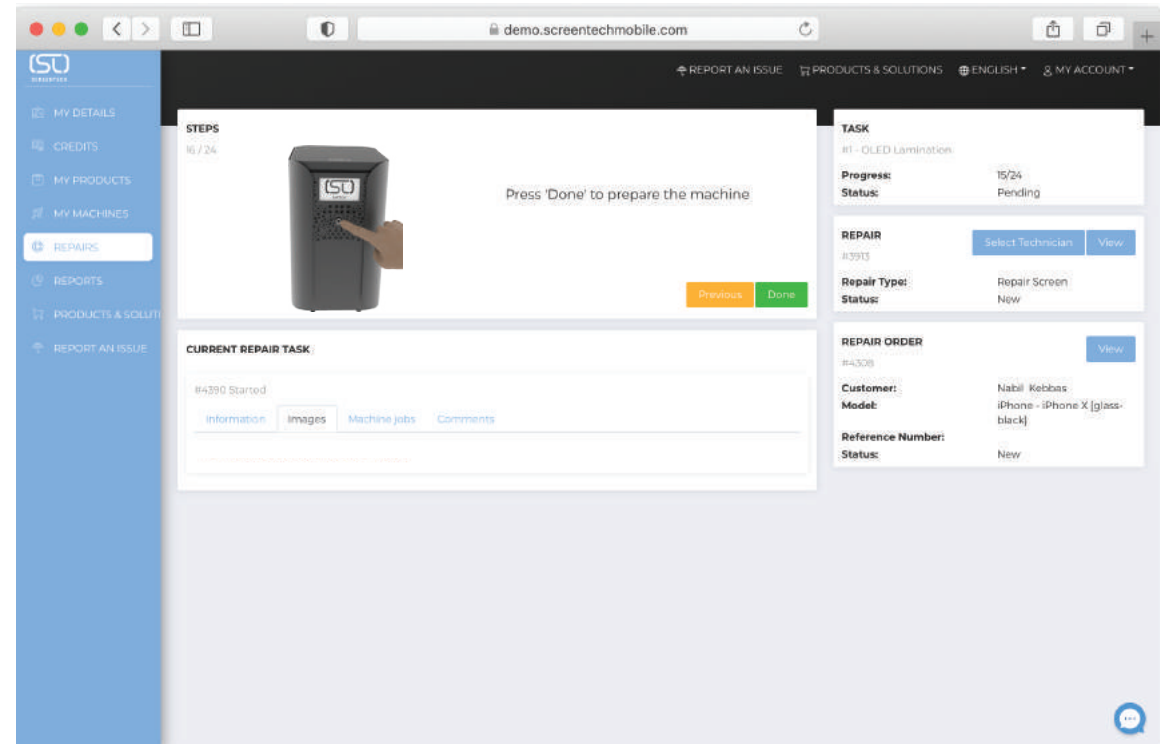
Debubble 2 = 000

Debubble bar = 000

0%

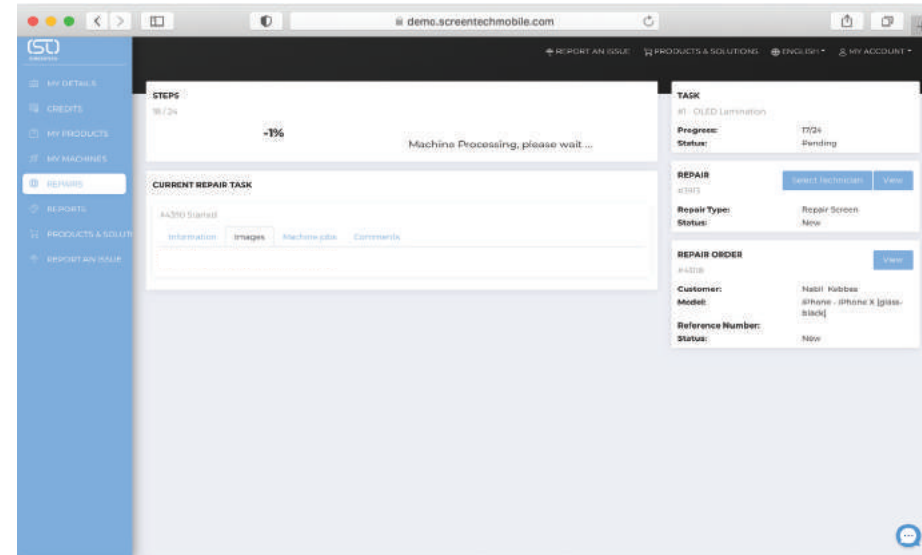
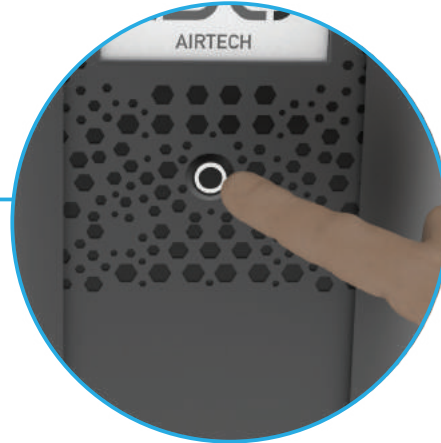
VACUUM\_SEAL

LAMTECH



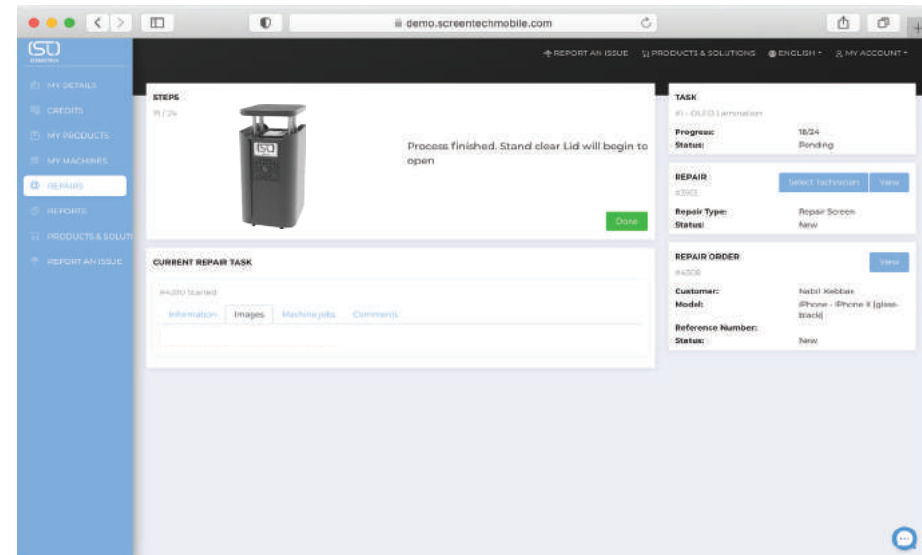
30

Process will start as button gets pressed



31

Process has now completed.  
The LID will automatically open  
Stand Clear



SCREENTECH STRIVES TO IMPROVE ITS PRODUCTS AT ALL TIMES. BOTH TEH DESIGN SPECIFICATIONS AND THESE USER INSTRUCTIONS ARE THUS TO SUBJECT TO CHANGE WITHOUT NOTICE.

POWER

INPUT VOLTAGE	Single Phase 110VAC/220VAC
OUTPUT VOLTAGE	24VDC
FREQUENCY	50-60Hz
WATTAGE	<= 40 WATTS

FEATURES

AIRBAG	LATEX
PNEUMATIC PISTON	150MM X 200MM
LINEAR ACTUATORS	300MM X 35MM
PRESSURE BARS MAXIMUM	10 BARS
PRESSURE VACUUM MAXIMUM	Ultimate vacuum(Pa) 6*10-2
CHAMBER TEMPERATURE	40C
CONNECTION IOT	ETHERNET LAN

GENERAL

WEIGHT	42.4kg
DIMENSIONS	450MM x 355MM x 255MM

REGION	COUNTRY	CUSTOMER CARE CENTRE
EUROPE	GERMANY	
	GREECE	
	FRANCE	
	ITALY	
ASIA PACIFIC	HONG KONG	
AFRICA	SOUTH AFRICA	
LATIN AMERICA		

### FCC Warning

This device complies with part 15 of the FCC rules. Operation is subject to the following two conditions: (1) this device may not cause harmful interference, and (2) this device must accept any interference received, including interference that may cause undesired operation.

Changes or modifications not expressly approved by the party responsible for compliance could void the user's authority to operate the equipment.

NOTE: This equipment has been tested and found to comply with the limits for a Class B digital device, pursuant to part 15 of the FCC Rules. These limits are designed to provide reasonable protection against harmful interference in a residential installation. This equipment generates uses and can radiate radio frequency energy and, if not installed and used in accordance with the instructions, may cause harmful interference to radio communications. However, there is no guarantee that interference will not occur in a particular installation. If this equipment does cause harmful interference to radio or television reception, which can be determined by turning the equipment off and on, the user is encouraged to try to correct the interference by one or more of the following measures:

- Reorient or relocate the receiving antenna.
- Increase the separation between the equipment and receiver.
- Connect the equipment into an outlet on a circuit different from that to which the receiver is connected.
- Consult the dealer or an experienced radio/TV technician for help.

### Radiation Exposure Statement

This equipment complies with FCC radiation exposure limits set forth for an uncontrolled environment. This equipment should be installed and operated with minimum distance 20cm between the radiator and your body.