

U8

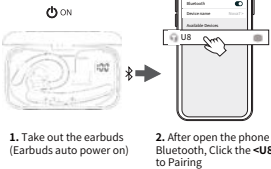
English

Instruction Manual



Please read the instructions before use

Connect



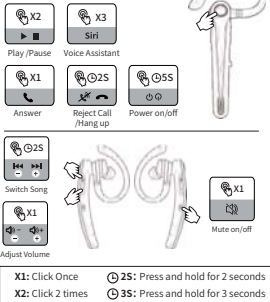
Reset

If the earbuds have any connection problems, please reset the headset.

1. While powered on, press and hold both volume "+" and volume "-" buttons for 5 seconds.
2. After 5 seconds, the red LED will light up for 1 second, indicating a successful reset.

(If the reset fails, repeat the steps.)

Operation



Simultaneous dual-device connection

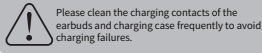
After connecting to the first device, press and hold the mute button for 5 seconds to enter pairing mode (you will hear a "Pairing" prompt). The headset can then connect to a second device. (Pairing mode will automatically exit if no connection is made within 1 minute.)

Problem handling

- ① **Can be connected but there is no sound:**
Click the headset to increase the volume.
- ② **Headset cannot be charge:**
Clean the charging contact of the headset and the charging case.
- ③ **Headset cannot be connected:**
Reset the headset.

Activation & Warranty

Permanent replacement of damaged, defective item or missing components. Please activate via email below within 15 days.
amazon.seller9966@gmail.com



Safety Instructions

1. Keep the product away from extremely hot and cold environments, it will damage the battery and circuit.
2. Avoid liquid immersion into the product.
3. Do not disassemble the product.
4. Do not use concentrated chemical products or detergents to clean the product.
5. Use only 5V/1A power supply. Connecting the power supply voltage too high may cause serious damage.
6. Do not randomly discard or place the product near fire or high temperature to avoid the danger of explosion.

FCC STATEMENT :

This device complies with Part 15 of the FCC Rules. Operation is subject to the following two conditions:
This device may not cause harmful interference, and
This device must accept any interference received, including interference that may cause undesired operation.
Warning: Changes or modifications not expressly approved by the party responsible for compliance could void the user's authority to operate the equipment.

NOTE: This equipment has been tested and found to comply with the limits for a Class B digital device, pursuant to Part 15 of the FCC Rules. These limits are designed to provide reasonable protection against harmful interference in a residential installation. This equipment generates uses and can radiate radio frequency energy and, if not installed and used in accordance with the instructions, may cause harmful interference to radio communications. However, there is no guarantee that interference will not occur in a particular installation. If this equipment does cause harmful interference to radio or television reception, which can be determined by turning the equipment off and on, the user is encouraged to try to correct the interference by one or more of the following measures:
Reorient or relocate the receiving antenna.
Increase the separation between the equipment and receiver.
Connect the equipment into an outlet on a circuit different from that to which the receiver is connected.
Consult the dealer or an experienced radio/TV technician for help.

RF warning statement:

The device has been evaluated to meet general RF exposure requirement. The device can be used in portable exposure condition without restriction.

ISED Caution:

English:
This device complies with Innovation, Science and Economic Development Canada licence-exempt RSS standard(s). Operation is subject to the following two conditions:
(1) This device may not cause interference, and
(2) This device must accept any interference, including interference that may cause undesired operation of the device.
The device has been evaluated to meet general RF exposure requirement. The device can be used in portable exposure condition without restriction.

French:
Cet appareil est conforme aux normes RSS exemptées de licence d'innovation, sciences et développement économique Canada. L'exploitation est autorisée aux deux conditions suivantes:
(1) l'appareil ne doit pas produire de brouillage, et
(2) l'utilisateur de l'appareil doit accepter tout brouillage radioélectrique subi, même si le brouillage est susceptible d' compromettre le fonctionnement.
Le matériel a été évalué pour répondre aux exigences générales d'exposition aux radiofréquences. Le dispositif peut être utilisé dans des conditions d'exposition portables illimitées.

FCC and ISED RF warning statement:
The device has been evaluated to meet general RF exposure requirement. The device can be used in portable exposure condition without restriction.
L'appareil a été évalué pour répondre aux exigences générales en matière d'exposition aux RF. L'appareil peut être utilisé en condition d'exposition portable sans restriction.