

Install the test driver first

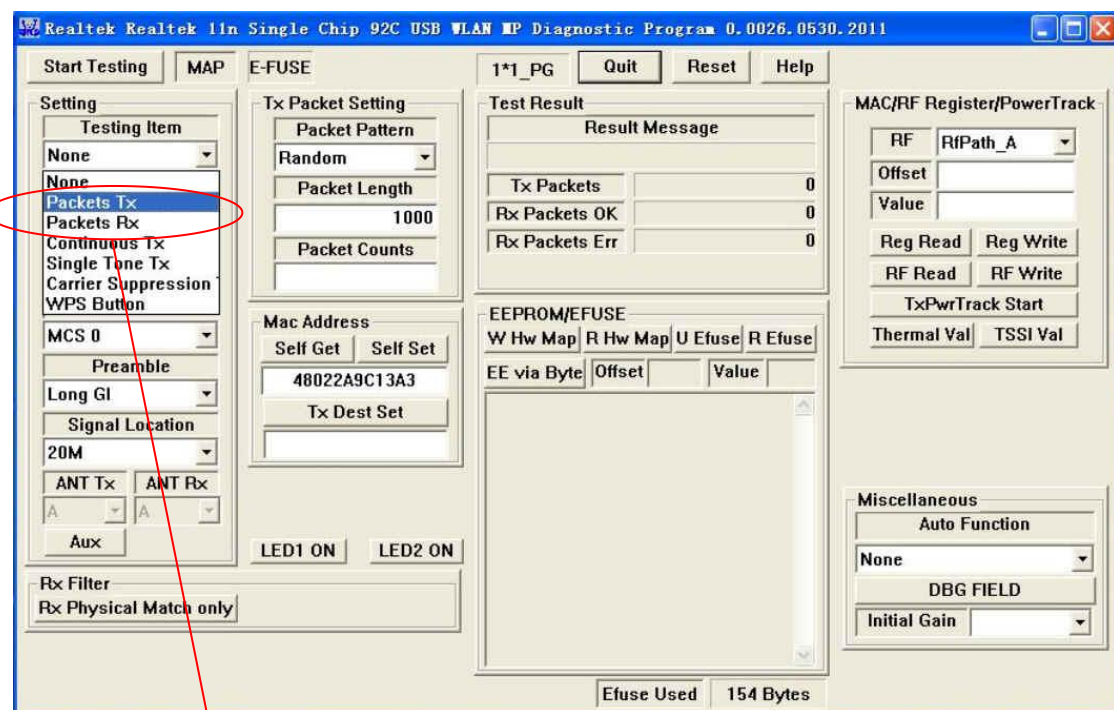
Run the setup.exe file, the next step,,, until the installation is complete. Device manager, under the network adapter will see the 8188 network card information as follows:



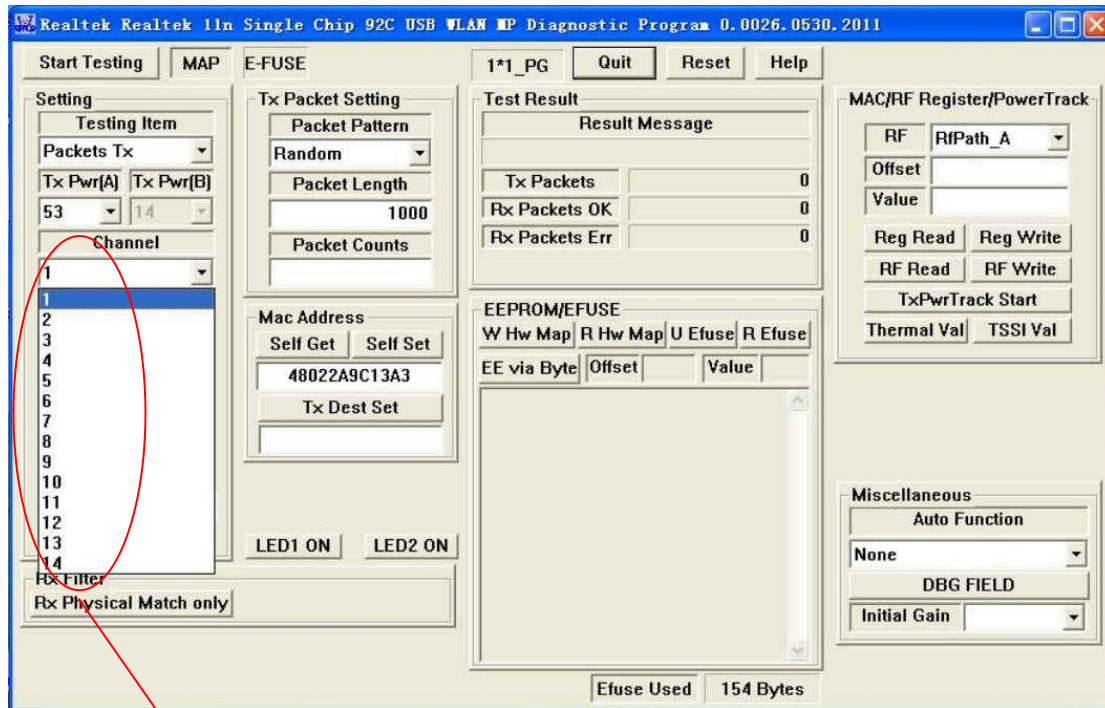
At the same time, the following icons appear on the desktop



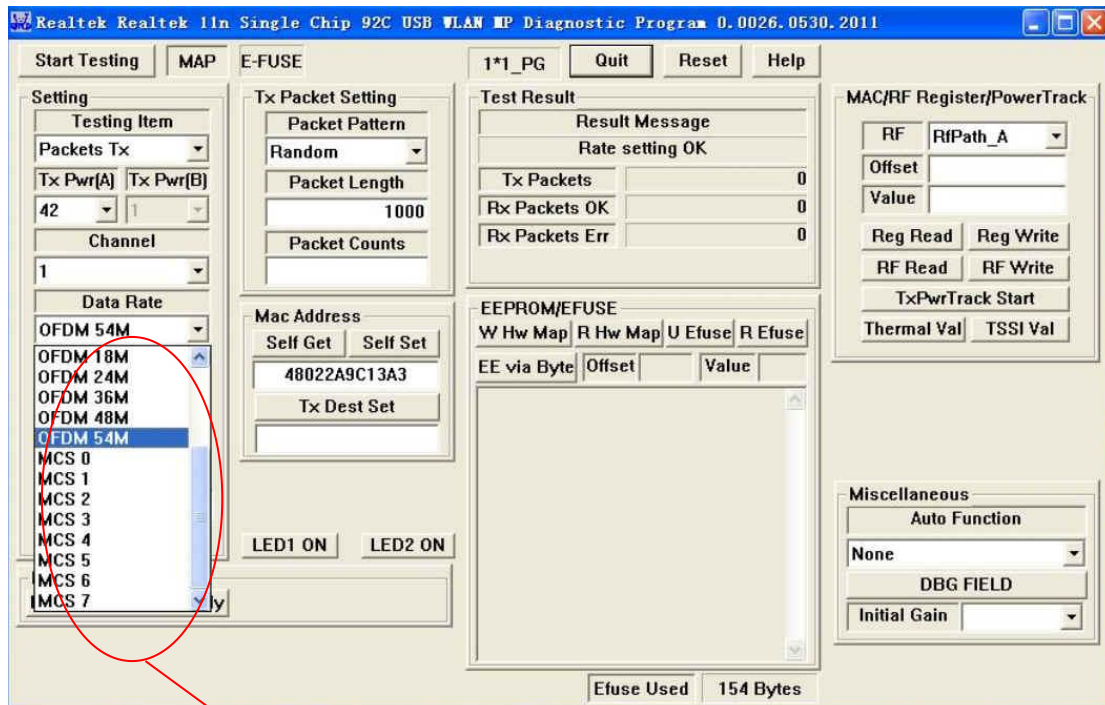
Double-click the desktop icon and the following interface appears.



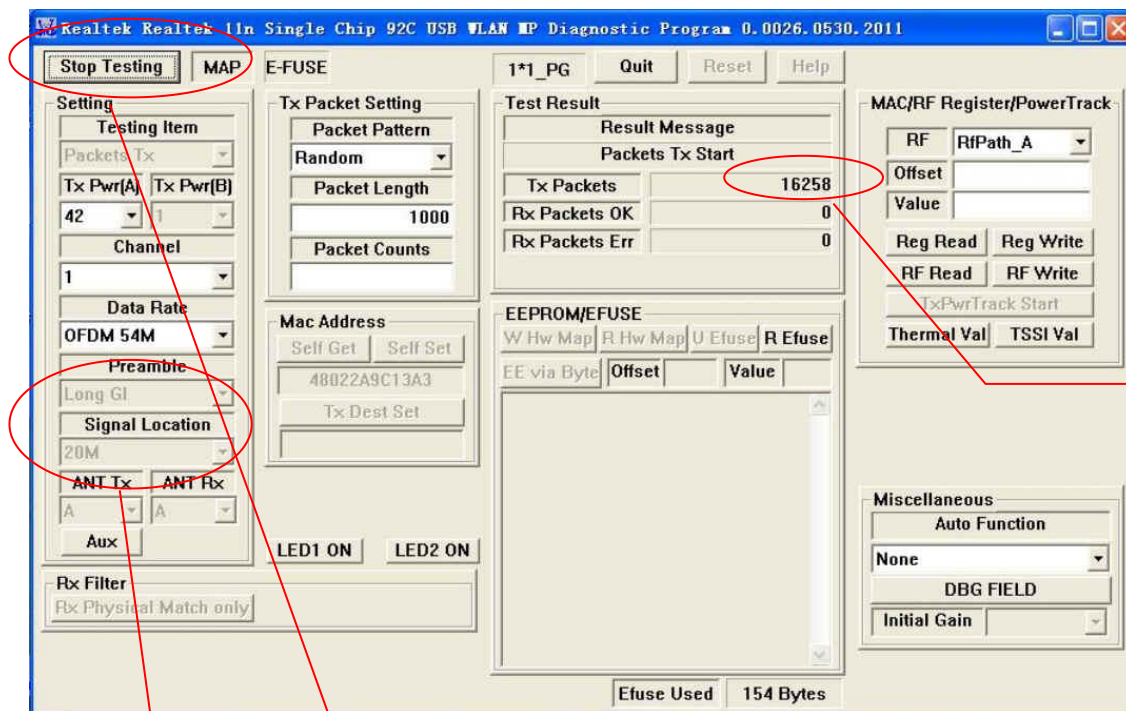
Select test TX/RX



Select test channel 1-14



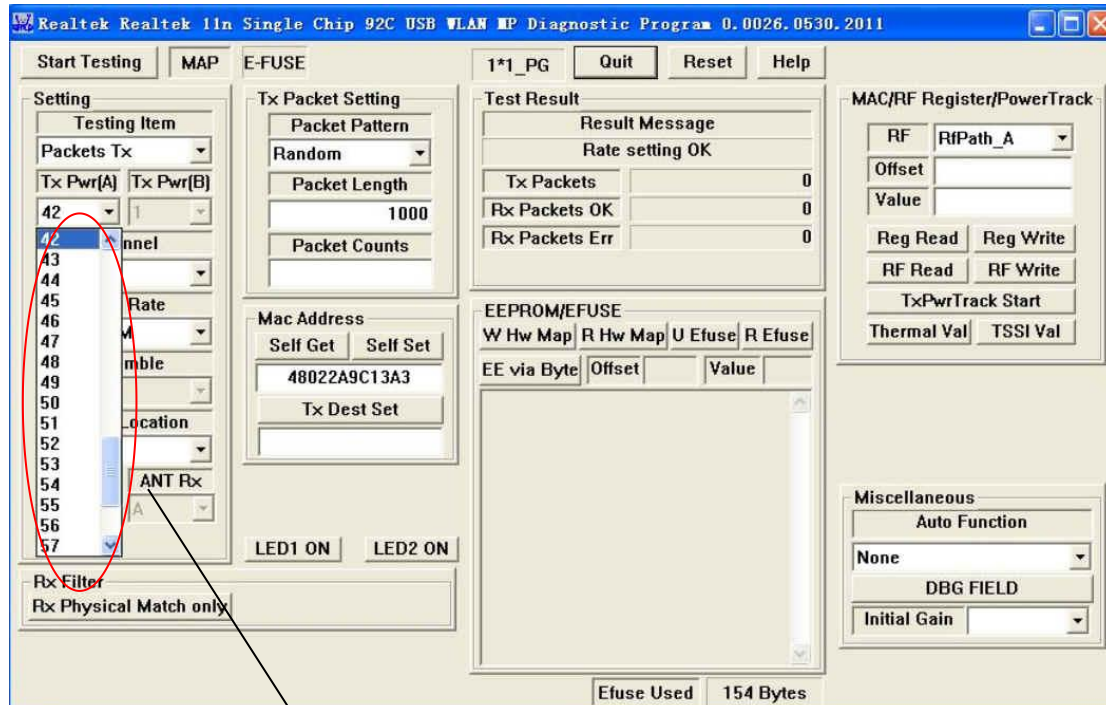
Select test mode 802.11B/G/N



Number of packages issued

Click to start the test

HT20/HT40



The POWER value is debugged here, the larger the value, the larger the POWER. The smaller the value, the smaller the POWER