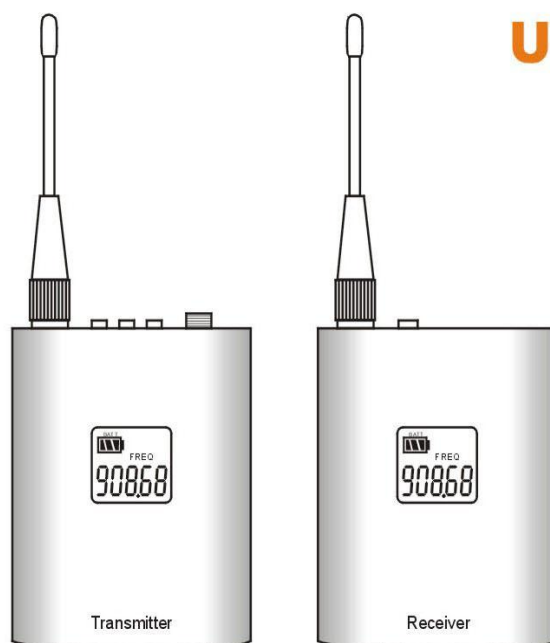


Professional *Mini Wireless* Microphone

USER GUIDE



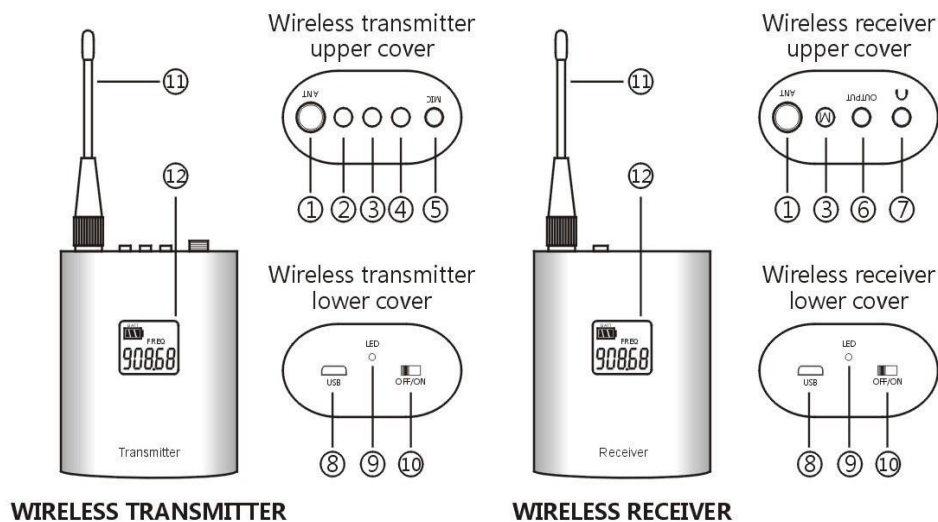
MINI WIRELESS MICROPHONE

Thank you very much for choosing our products. In order to ensure the best performance of the products, please read the instructions carefully before use!

Dear users, thank you very much for choosing our products. Our products are specially designed for interview, live broadcast, performance, singing and other activities, with stable performance, low noise, low power consumption and other advantages. The product uses digital ID code pilot lock, UHF transmission technology, which can effectively solve the problem of same frequency crosstalk. The product design is small, mini, beautiful, easy to carry and simple to operate. In order to better understand and use our products and ensure the best performance of the products, we suggest that you carefully read this operation manual before use.

We promise to provide first-class quality, first-class service. We have a professional technical team, ready to help you solve technical problems.

1、FUNCTION DESCRIPTION



WIRELESS TRANSMITTER

WIRELESS RECEIVER

1. Antenna interface.
2. Volume reduction button / channel adjustment button.
3. Function key. (used for channel / volume switching or frequency matching operation)
4. Volume increase button / channel adjustment button.
5. Microphone connector.
6. Audio output interface. (connect SLR camera, camera, mobile phone, recording equipment, mixer, etc.)
7. Monitor interface. (connect headphones)
8. Micro USB charging port. (charging with power bank is supported)
9. Charging indicator. (charging: red; charging completed: blue)
10. Power switch.
11. Signal antenna.
12. Multi function display. (display current channel, frequency, volume, battery power, etc.)

2、 FREQUENCY OPERATION INSTRUCTIONS

When the product is delivered from the factory, the frequency matching operation has been carried out, and the wireless transmitter and the wireless receiver can identify each other for normal use.

If the wireless transmitter and the wireless receiver fail to recognize each other due to misoperation or other reasons, it is necessary to conduct frequency matching operation.

OPERATION STEPS

1. Turn the wireless transmitter and receiver off and on.
2. Long press the "m" key of the wireless transmitter for about 3 seconds, at this time, the display screen will flash quickly and enter the frequency matching state.
3. Long press the "m" key of the wireless receiver for about 3 seconds, at this time, the display quickly flashes and displays "---" to enter the frequency matching state.
4. Press the "m" key of wireless transmitter briefly, the display screen will stop flashing and display the "xxx.xx" frequency information.
5. At the same time, the display screen of the wireless receiver stops flashing and displays the same "xxx.xx" frequency information as the transmitter.

This status indicates that the wireless transmitter and the wireless receiver have completed the automatic frequency matching operation and mutual recognition, and can be used normally

3、 VOLUME UP AND DOWN

Volume up: press the "+" key of the wireless transmitter to adjust the volume range within 0-15

Volume down: press the "-" key of the wireless transmitter, and the volume range is 0-15

4、 FREQUENCY / CHANNEL ADJUSTMENT

At the same time, turn on the wireless transmitter and the wireless receiver to ensure mutual recognition (if not, please conduct frequency matching operation), Short press the "m" key of the wireless transmitter, and the display screen displays "ch 01". At this time, press the "+" or "-" key to adjust the channel, The radio receiver automatically adjusts the frequency / channel consistent with the transmitter, and the channel can be adjusted in the range of 01-15.

! The mini wireless microphone can support up to 15 sets of simultaneous use in the same occasion.

5、 LED DISPLAY AND BATTERY POWER DESCRIPTION

Battery is fully:



Low battery:

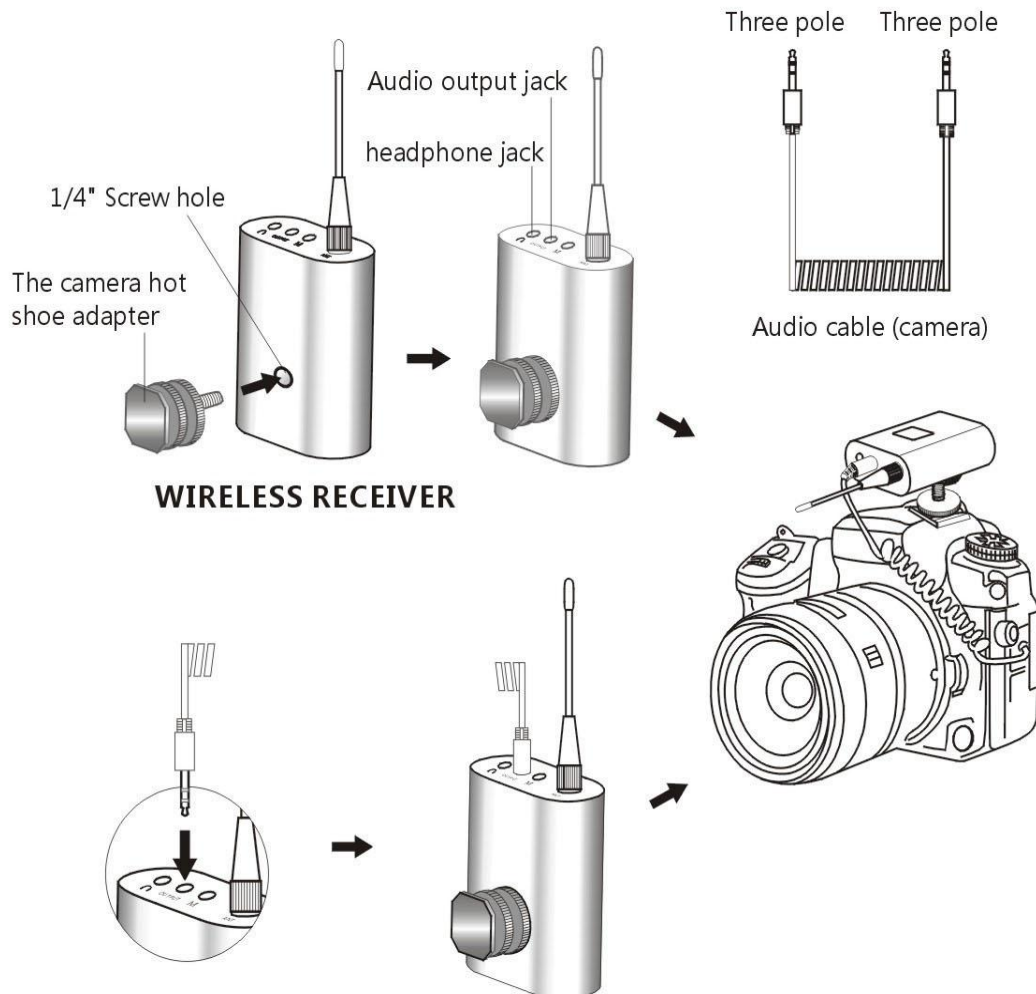


(Need to charge the battery)

! When the battery is not used for a long time, it must be charged every two months to protect the battery.

6、 CONNECTION AND USE OF WIRELESS RECEIVER

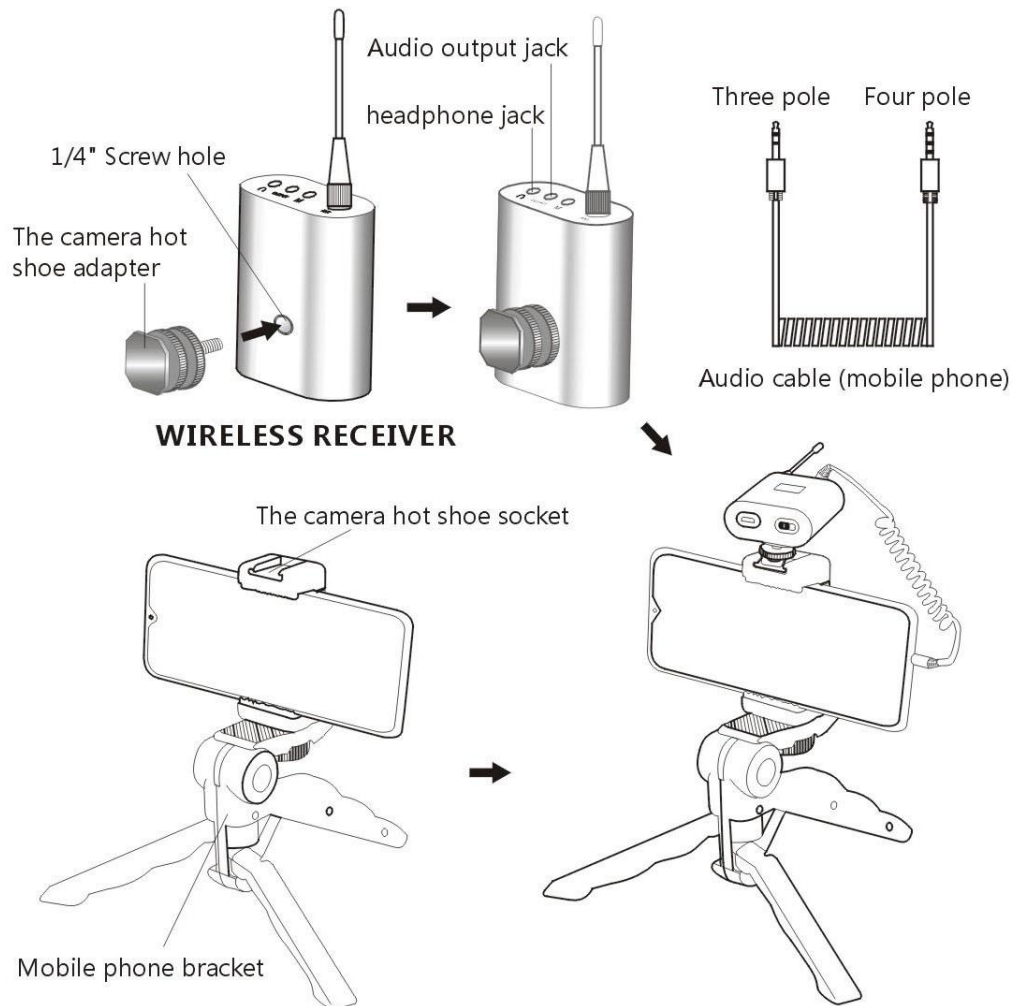
A、 Connect SLR camera :



- Rotate and install the hot shoe adapter into the 1 / 4 "hole on the back of the wireless receiver, and adjust the relative angle by adjusting the nut.
- Push the heat boot adapter into the heat boot mouth of the SLR camera, rotate the nut to fix it, and adjust the relative angle by adjusting the nut.
- Insert one end of the 3-segment audio connecting line into the "output" interface of the wireless receiver, and the other 3-segment audio connecting line into the 3.5mm "mic" interface of the SLR camera.
- The monitor headset is plugged into the monitor interface.

! For the equipment without 3.5mm interface, it can be connected and used through another conversion line or conversion head.

二、Connecting the mobile phone bracket :



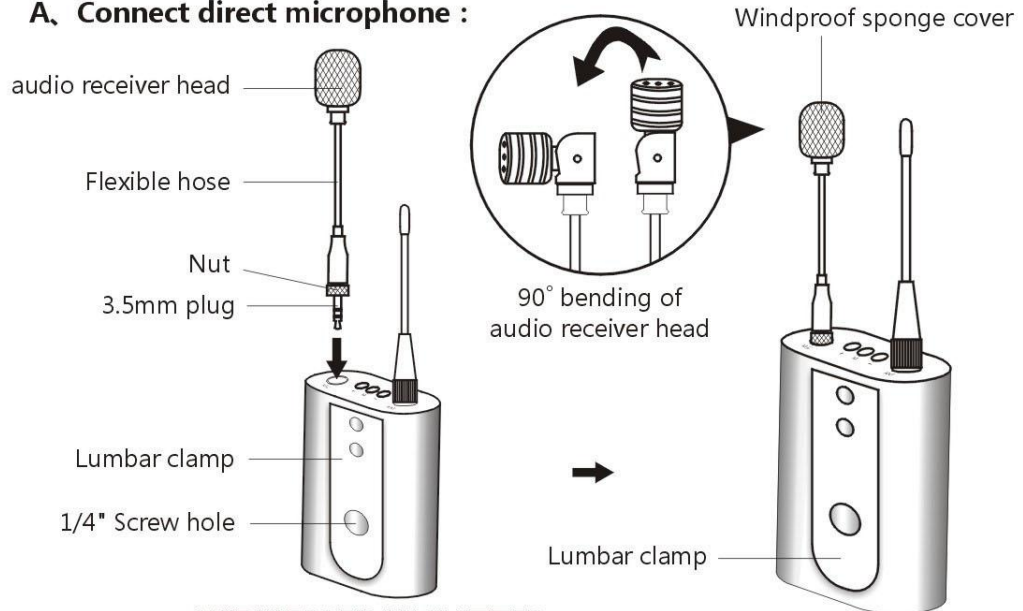
1. Rotate and install the hot shoe adapter into the 1 / 4 "hole on the back of the wireless receiver, and adjust the relative angle by adjusting the nut.
2. Push the hot shoe adapter into the hot shoe mouth of the mobile phone bracket, and rotate the nut to fix it. The relative angle can be adjusted by adjusting the nut.
3. Insert one end of the 4-segment audio cable into the 3.5mm "mic" interface of the mobile phone, and the other end into the "output" interface of the wireless receiver.
4. The monitor headset is plugged into the monitor interface.

❗ **Apple's lightning, usb-c and Android type-C phones need to use the original conversion cable connection.**

❗ **The mobile phone bracket is an optional accessory, which needs to be purchased separately.**

7、 CONNECTION AND USE OF WIRELESS TRANSMITTER

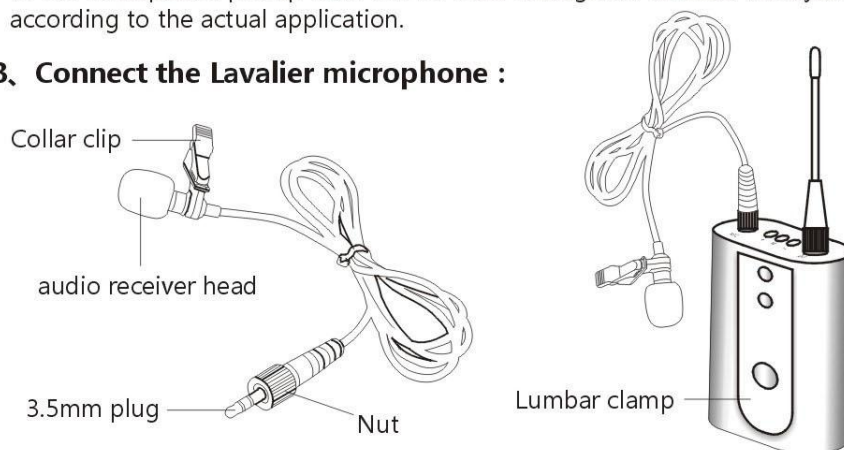
A、 Connect direct microphone :



WIRELESS TRANSMITTER

- Insert the in-line microphone into the "mic" socket of the wireless transmitter, and tighten the nut to fix the in-line microphone.
- The microphone pickup head can be bent 90 degrees, and can be adjusted flexibly according to the actual application.

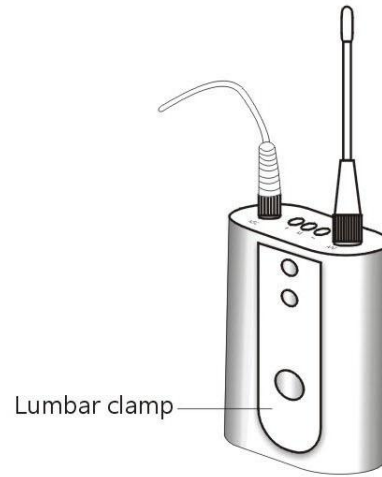
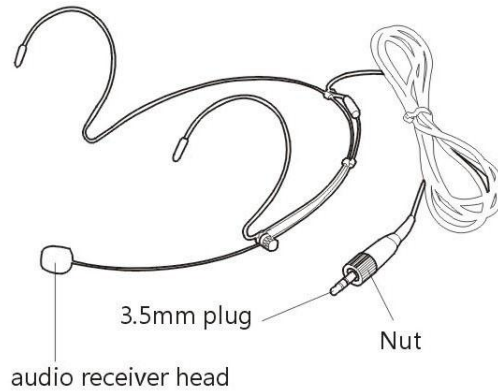
B、 Connect the Lavalier microphone :



- Insert the clip microphone into the "mic" socket of the wireless transmitter, and tighten the nut to fix the direct microphone.
- Clip the wireless transmitter to the user's belt or belt.
- Point the pickup head to the user's mouth, then clamp the collar clip on the user's collar or clothes for fixation. The distance between the pickup head and the user's mouth can be flexibly adjusted.

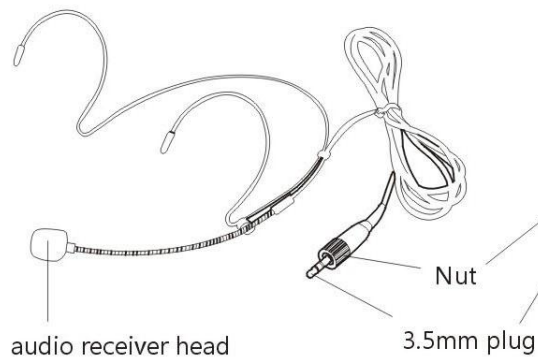
C、Connect headset microphone :

Section A :

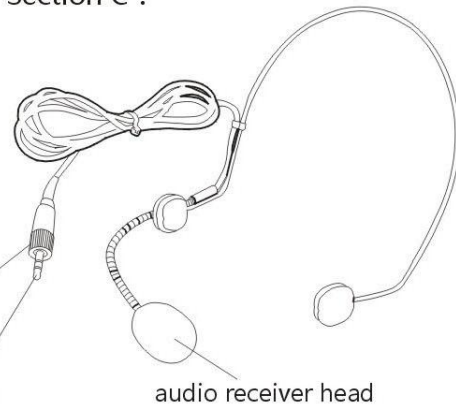


WIRELESS TRANSMITTER

Section B :



Section C :



1. Insert the 3.5mm plug of the headset microphone into the "mic" socket of the wireless transmitter, and tighten the nut to fix the direct microphone.
2. Clip the wireless transmitter to the user's belt or belt.
3. Put the headset microphone on the user's head or ear for fixation. The pickup head points to the user's mouth. The distance and angle between the pickup head and the user's mouth can be flexibly adjusted.

8、 TECHNICAL PARAMETERS

Frequency range: UHF 902-928mhz	Modulation mode: digital frequency modulation
Number of frequency points: 51	Battery Specification: 3.7V 800mA
Frequency response: 50Hz-18KHz	Use distance: 20 meters
Signal to noise ratio: 96dB	(depending on the use environment)
Distortion: 0.5% @ 1kHz	Battery life: about 8 hours
Polar pattern: moving coil	(depending on the use environment)

9、 TROUBLESHOOTING

The following table lists some common faults and Solutions:

FAULTS	SOLUTIONS
Unable to power on	<ul style="list-style-type: none">● Check whether the battery has enough power● Try to charge and restart
No sound	<ul style="list-style-type: none">● Whether the transmitter and receiver recognize the connection● Is the volume too low● Whether the audio cable is inserted in the wrong position
Whistling	<ul style="list-style-type: none">● Turn the volume down● Keep the microphone away from the speaker
Weak signal	<ul style="list-style-type: none">● Whether the battery power is sufficient● Reduce the distance between transmitter and receiver● Reduce the barrier of sundries in use

Please contact your dealer or agent if you are unable to remove the fault.

*The configuration of products will vary according to different countries or regions, and the actual situation shall prevail.

*Within the scope of legal license, in order to improve the user experience, we will continue to upgrade and improve the product, and the technical parameters of the product may be slightly different.



This device complies with Part 15 of the FCC Rules. Operation is subject to the following two conditions: (1) this device may not cause harmful interference, and (2) this device must accept any interference received, including interference that may cause undesired operation

NOTE: This equipment has been tested and found to comply with the limits for a Class B digital device, pursuant to Part 15 of the FCC Rules. These limits are designed to provide reasonable protection against harmful interference in a residential installation. This equipment generates, uses and can radiate radio frequency energy and, if not installed and used in accordance with the instructions, may cause harmful interference to radio communications. However, there is no guarantee that interference will not occur in a particular installation. If this equipment does cause harmful interference to radio or television reception, which can be determined by turning the equipment off and on, the user is encouraged to try to correct the interference by one or more of the following measures:

- Reorient or relocate the receiving antenna.
- Increase the separation between the equipment and receiver.
- Connect the equipment into an outlet on a circuit different from that to which the receiver is connected.
- Consult the dealer or an experienced radio/TV technician for help.

Warning: changes or modifications not expressly approved by the party responsible for compliance could void the user's authority to operate the equipment