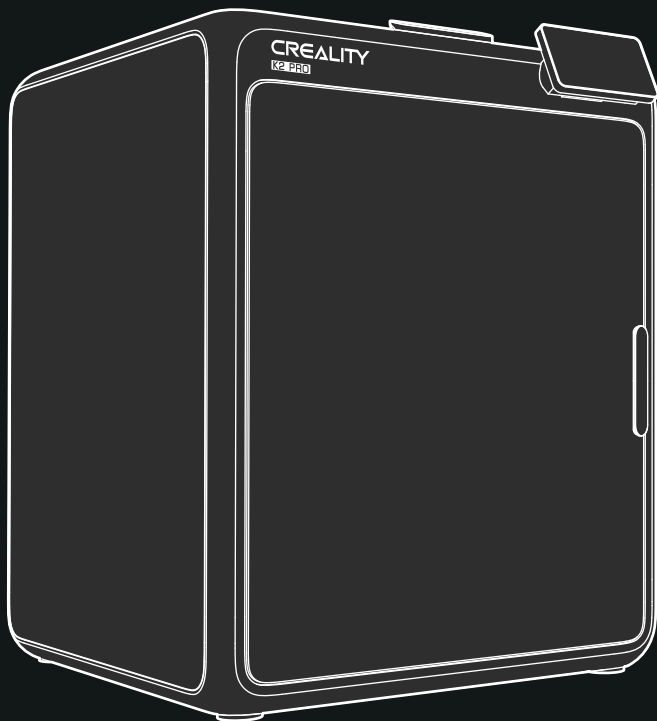




reddot winner 2025



K2 Pro

User Manual

K2 Pro 3D Printer

V 1.0_EN

To Our Dear Users

Thank you for choosing Creality. For your convenience, please read through this User Manual before you start and follow the instructions provided carefully.

Creality is always ready to provide you with high-quality services. If you encounter any issues or have any questions when using our products, please use the contact information at the end of this manual to contact us. To further improve your user experience, you can find more about our devices via the following methods:

User manual: You can find instructions and videos in the USB flash disk provided with the printer.

You can also visit our official website (<https://www.creality.com>) to find information regarding software, hardware, contact information, device instructions, device warranty information, and more.

Firmware Upgrade

1. You can upgrade the firmware directly through the device screen;
2. You can upgrade the firmware via the Creality Cloud OTA;
3. Please visit the official website <https://www.creality.com>, click on “Support → Download Center” , select the corresponding model to download the required firmware, (Or click on “Creality Cloud → Downloads → Firmware”) , after installation is complete, you can use it.

Product Operation and After-Sales Service Information

1. You can log in to the Creality Official Wiki (<https://wiki.creality.com>) to explore more detailed after-sales service tutorials.
2. Or contact our after-sales service center at +86 755 3396 5666, or send e-mail to cs@creality.com.



Creality Wiki

1. Do not use the printer in any way other than described herein in order to avoid personal injury or property damage;
2. Do not place the printer near any heat source or flammable or explosive objects. We suggest placing it in a well-ventilated, cool and dustless environment;
3. Do not expose the printer to a violent vibration or any other unstable environment, as this may cause poor print quality;
4. Please use recommended filaments to avoid clogging of the extrusion head and causing damage to the machine;
5. Do not use the power cable of other products during installation. Always use a grounded three-prong power outlet, which accompanies the printer;
6. Do not touch the nozzle and the heated bed during operation to avoid burns or personal injury;
7. Do not wear gloves or wraps while operating the machine to prevent entrapment of movable parts that could cause crushing and cutting injuries to bodily parts;
8. Use the provided tools to clean the filament from the extruder in time taking advantage of the residual temperature after printing. Do not touch the extruder directly when cleaning, otherwise it may cause burns;
9. Clean the printer frequently. Clean the printer body with a dry cloth regularly after powering off the printer, wipe away dust, bonded print filament and foreign objects on the guide rails;
10. It is not recommended for children under the age of 10 to use this machine directly to avoid personal injury.
11. Users should comply with the laws and regulations of the corresponding countries and regions where the equipment is located (used), abide by professional ethics, pay attention to safety obligations, and strictly prohibit the use of our products or equipment for any illegal purposes; Creality will not be responsible for any violators' legal liability under any circumstance;
12. Tip: Do not plug in or unplug wires on a charged basis.



Hot parts!

Burned fingers when handling the parts

Wait one-half hour after switching off before handling parts

1. Printer Information	01-06
1.1 Packing List	01-02
1.2 About the Printer	03-04
1.3 Equipment Specifications	05-05
1.4 Equipment Size	06-06
2. Unboxing	07-12
2.1 Install Accessories	07-08
2.2 Connecting CFS	09-10
2.3 Connecting Multiple CFS	11-11
2.4 Power-on Guide	12-12
3. Product Usage	13-16
3.1 User Interface	13-13
3.2 Loading Filament From Spool Holder	14-15
3.3 Loading Filament From CFS	16-16
4. First Use	17-20
4.1 Filament Setup	17-17
4.2 Print	18-18
4.3 Creality Print Slicing	19-20
5. Tips and Routine Maintenance	21-23
5.1 Printing Precautions	21-22
5.2 Maintenance Items	23-23

1. Printer Information

1.1 Packing List



① Printer



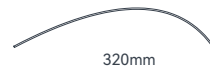
② Touch Screen



③ Spool Holder



④ Filament



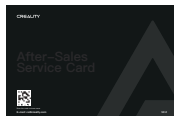
⑤ PTFE Tube



⑥ Power Cable



⑦ Quick Guide



⑧ After-sales services card

1. Printer Information



TOOL BOX



① Hexagonal Wrench



② Cutting Blade



③ Cutting Plier



④ Socket Spanner

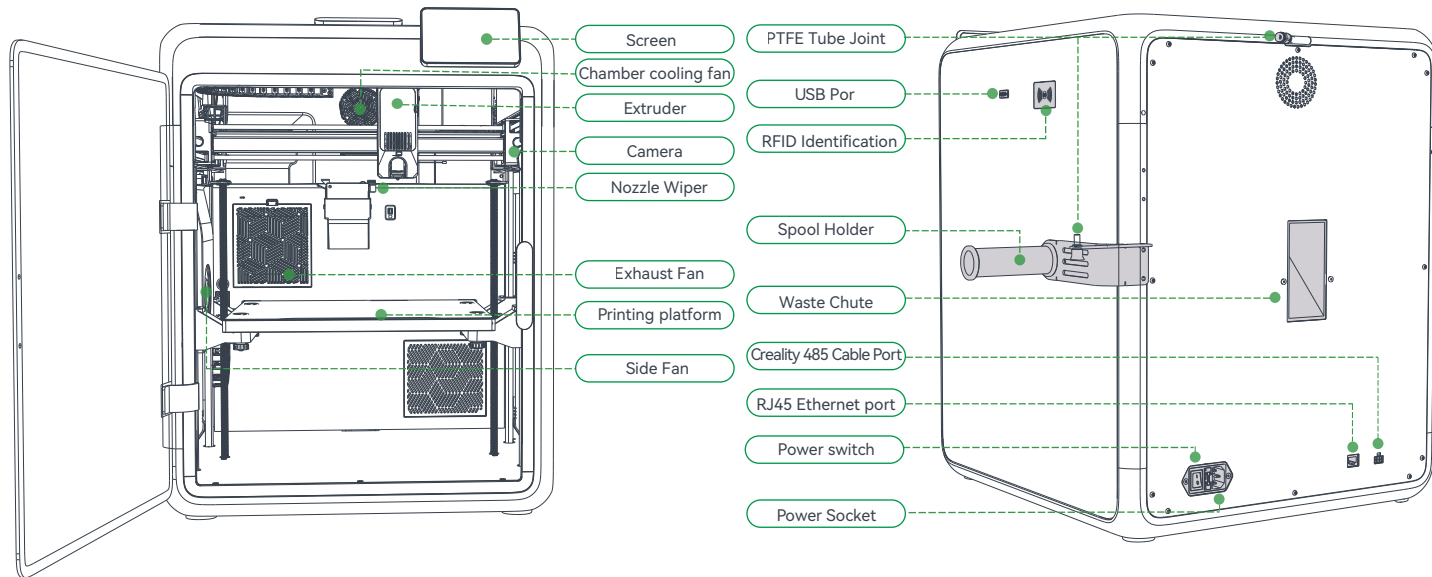


⑤ Nozzle Cleaner

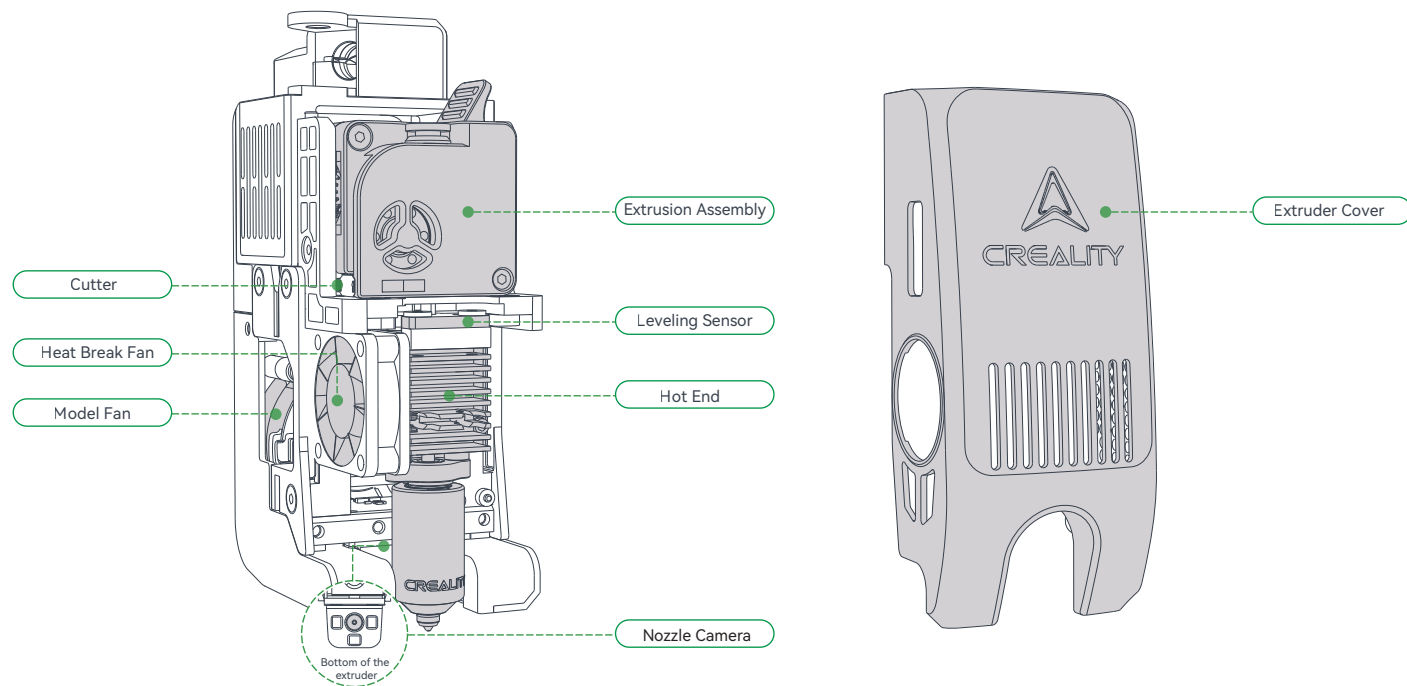
Tips: the above accessories are for reference only. Please refer to the physical accessories.

1. Printer Information

1.2 About the Printer



1. Printer Information



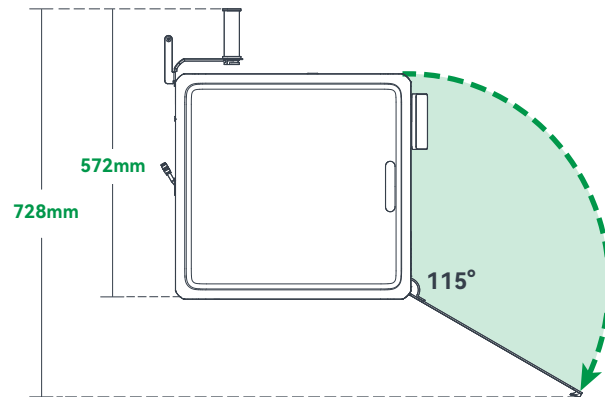
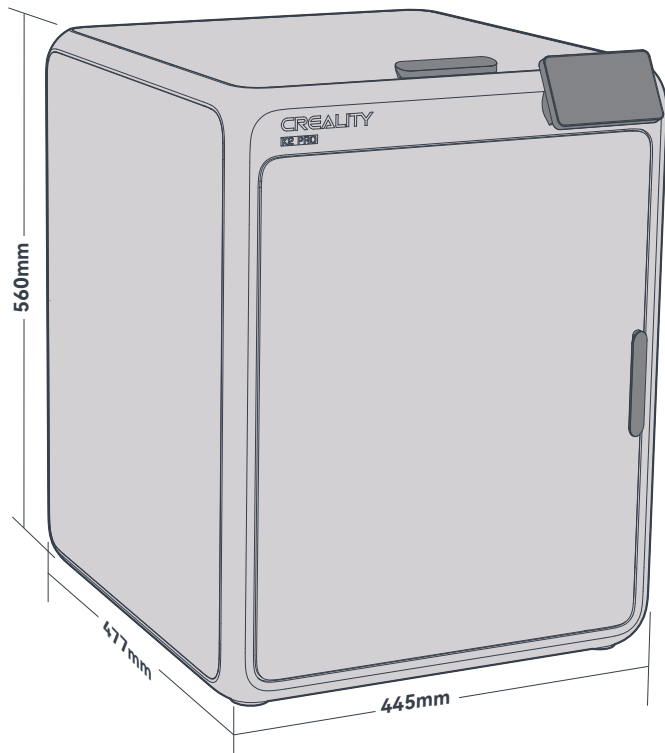
1. Printer Information

1.3 Equipment Specifications

Equipment Specifications	
Model	K2 Pro
Modeling dimensions	300*300*300mm ³
Printer size	445*477*573mm ³
Supported filaments	PLA/PETG/ABS/ASA/PLA-CF/PET
Extruder type	Proximal dual gear extruder
Printing speed	≤600mm/s
Acceleration	≤20000mm/s ²
Nozzle diameter	0.4mm (standard)
Nozzle temperature	≤300°C
Hotbed temperature	≤100°C
Rated power	1300W
Rated voltage	100-240V~, 50/60Hz
Screen	4-inch color touch screen
AI Camera	Yes
Power loss recover	Yes
Filament Detection	Yes
Traffic detection	Yes
Slicing software	Creality Print 6.0 and higher
Working mode	USB flash drive/Ethernet/WiFi
Printing platform	PEI Spring steel platform plate
Leveling method	Automatic leveling

1. Printer Information

1.4 Equipment Size

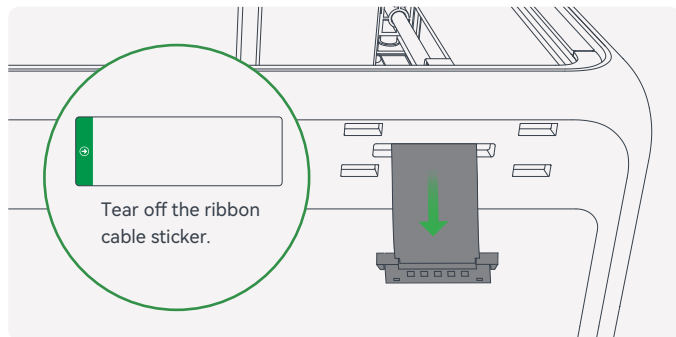


Overall machine dimensions (477× 445 × 560), including the top cover handle, front door handle, and foot pads. Please ensure at least a 10 cm distance between the machine and the wall.

2. Unboxing

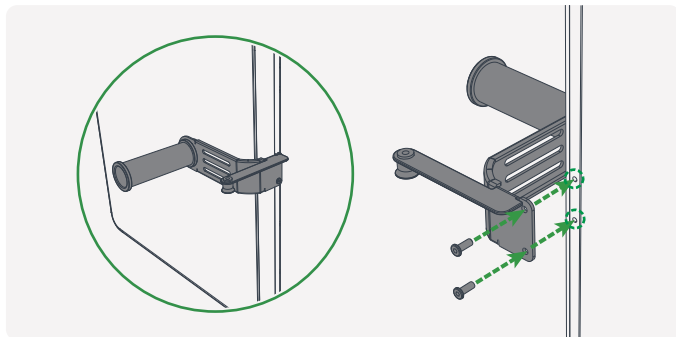
2.1 Install Accessories

2.1.1 Install Printer Screen

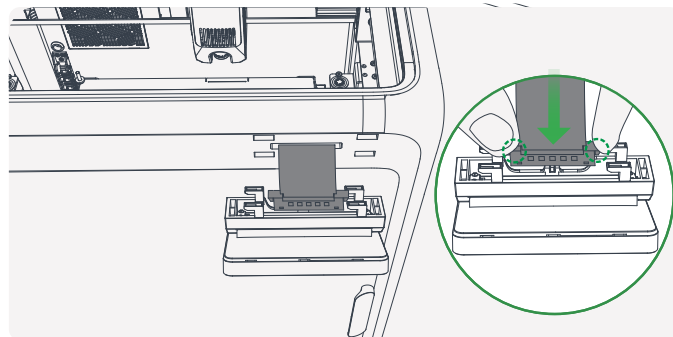


- 1 Connect the screen ribbon cable: Make sure to press it into place according to the direction shown in the diagram.

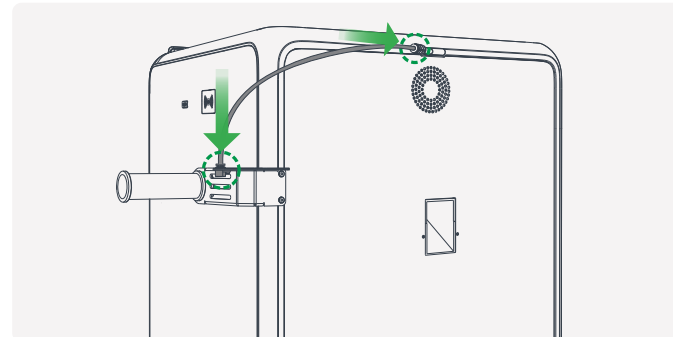
2.1.2 Install Spool Holder and PTFE Tube



- 1 First, remove the two material rack screws from the back panel. Then, align the material rack with the holes on the back of the machine and secure it with the two screws.



- 2 Connect the screen cable: Pay attention to the direction shown in the figure and press to connect.



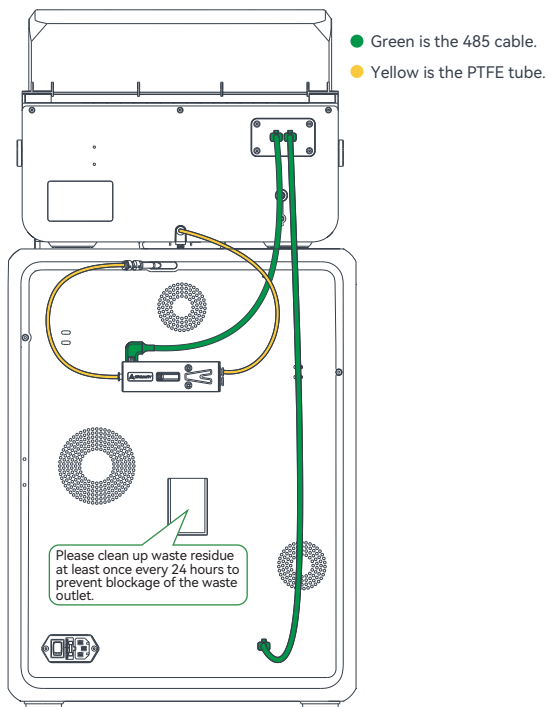
- 2 Connect the PTFE tube: As shown in the picture, connect both ends of the PTFE tube to the pneumatic fittings on the material rack and the machine.

2. Unboxing

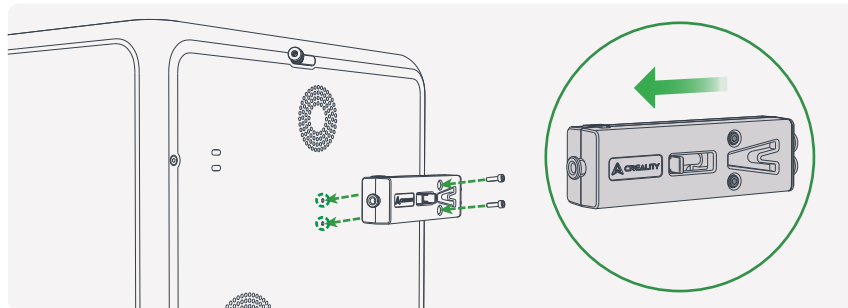
2.3 Connecting CFS



Users who have not purchased CFS can skip this step.

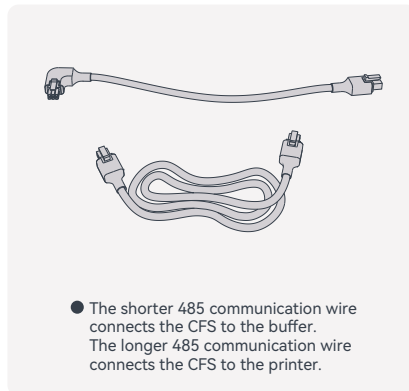
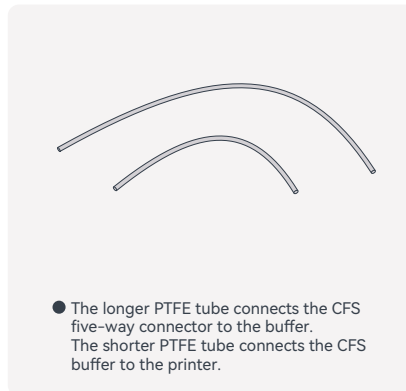


2.3.1 Install the filament buffer

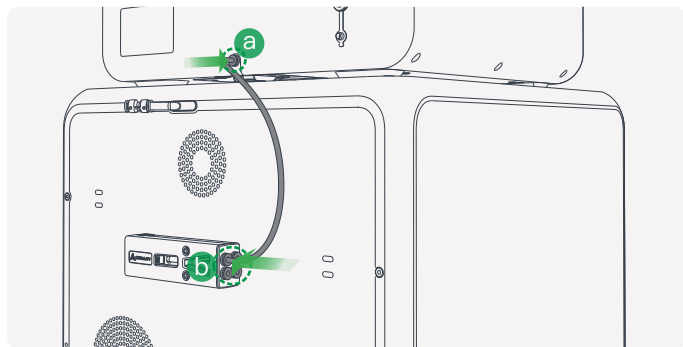


- 1 Install the filament buffer on the back of the printer and tighten it with two buffer screws; pay attention to the direction of the buffer, do not install it in a wrong direction.

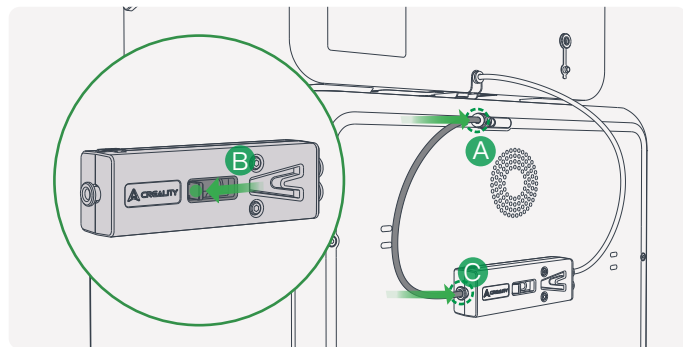
2.3.2 Connect the PTFE tube and 485 cable



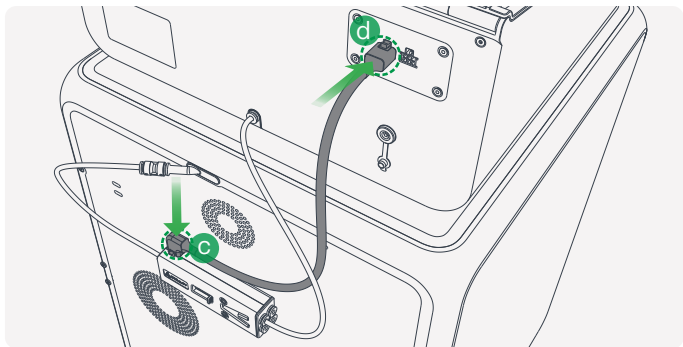
2. Unboxing



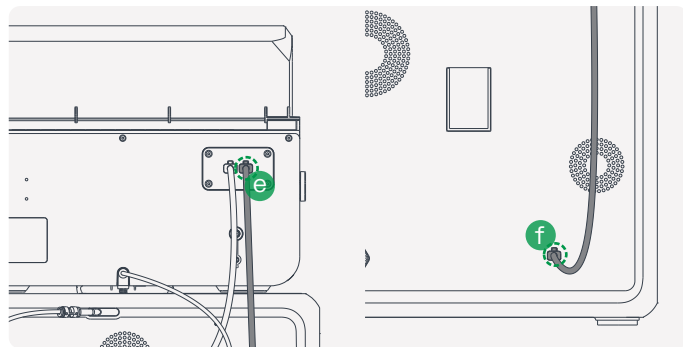
- 1 Connect CFS hub outlet and buffer: insert one end of the longer PTFE tube into the CFS hub outlet (position a); insert the other end into the buffer (position b, any of the four holes).



- 2 Connect the buffer to the printer following steps A, B, and C.



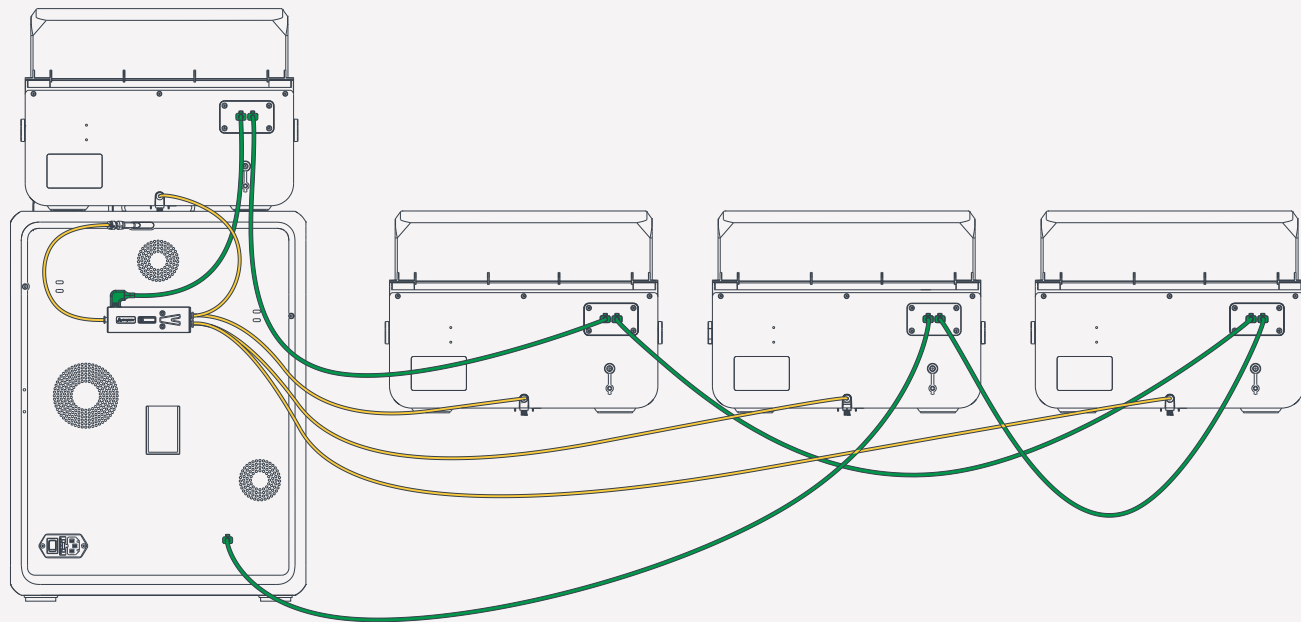
- 3 Connect CFS and buffer Crealty 485 cable: Note that the elbow is inserted into the buffer position c, and the straight head is inserted into the CFS position d (either of the two 485 sockets of CFS).



- 4 Connect the CFS to the printer using the 485 communication wire: This cable has 6-pin straight connectors on both ends with no specific orientation. Insert one end into position E on the CFS and the other end into position F on the machine interface.

2. Unboxing

2.4 Connecting Multiple CFS



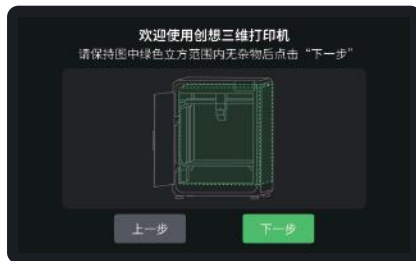
Users who have not purchased CFS can skip this step.

● Green is the 485 cable.

● Yellow is the PTFE tube.

2. Unboxing

2.4 开机引导



- ① 按屏幕提示完成开机引导程序，此过程大概需要16分钟；
- ② 振纹优化时，机器声音较大，属于正常现象。



当前界面仅供参考，由于功能不断升级，实际以官网最新软件/固件UI为准。

3. 产品使用

3.1 机器界面简介



左侧为导航栏:

- ① 首页: 空闲状态可查看机器各部分温度情况; 打印中在此界面可查看模型打印进度等信息;
- ② 调整页面: 在此页面可操作机器移动, 加载耗材等操作;
- ③ 文件页面: 在此页面可选择打印文件操作打印;
- ④ 功能设置页面: 可设置网络, 摄像头等功能; 也可查看机器信息;
- ⑤ 帮助页面: 可导出日志, 或查看机器WiKi。

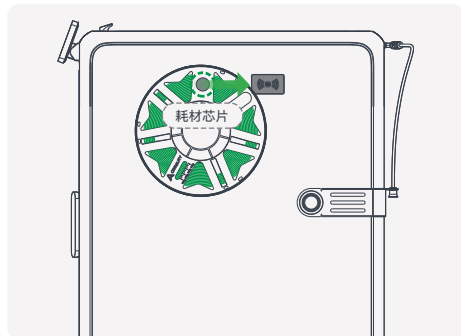
可手动设置参数



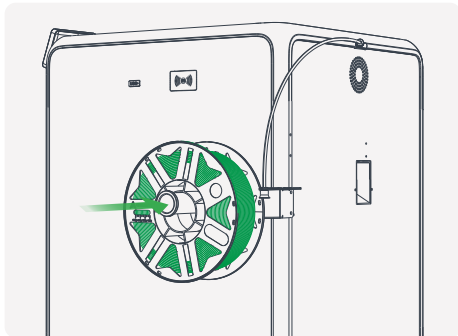
当前界面仅供参考, 由于功能不断升级, 实际以官网最新软件/固件UI为准。

3. 产品使用

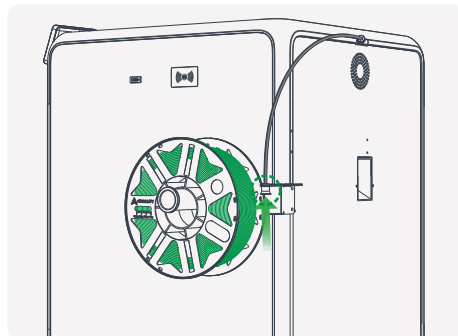
3.2 料架耗材编辑/进料/退料



① 若耗材支持RFID识别，请将耗材上的芯片对准机身RFID识别处扫描耗材，即可自动设置耗材信息；



② 将耗材悬挂在料架上；



③ 将耗材穿入铁氟龙管，轻推，直到推不动；



④ 若耗材不支持RFID识别，则需手动点击屏幕设置耗材信息：调整页面→耗材→编辑（如图料架下方），分别设置耗材品牌-类型-名称-颜色，最后点击确定即可保存设置；