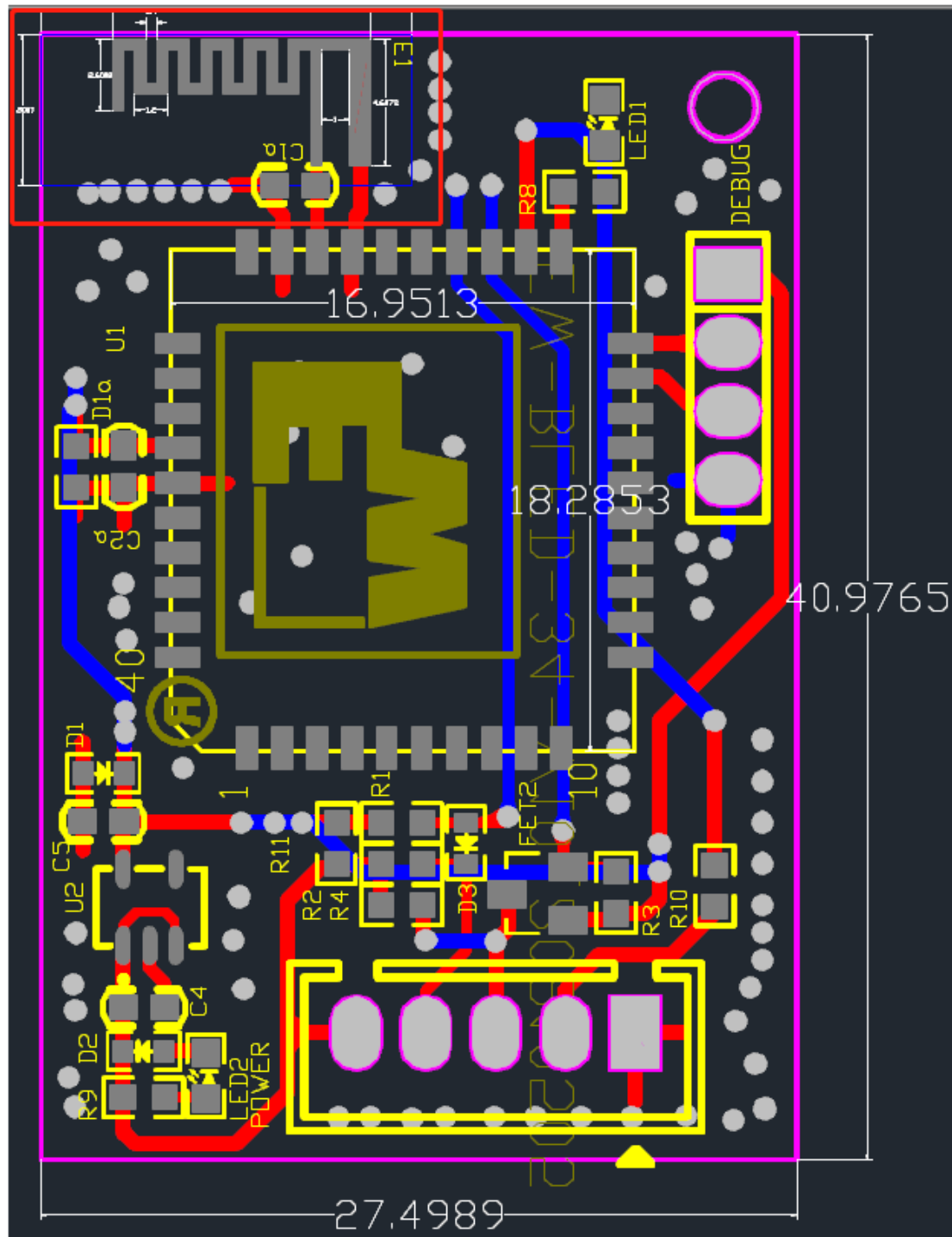


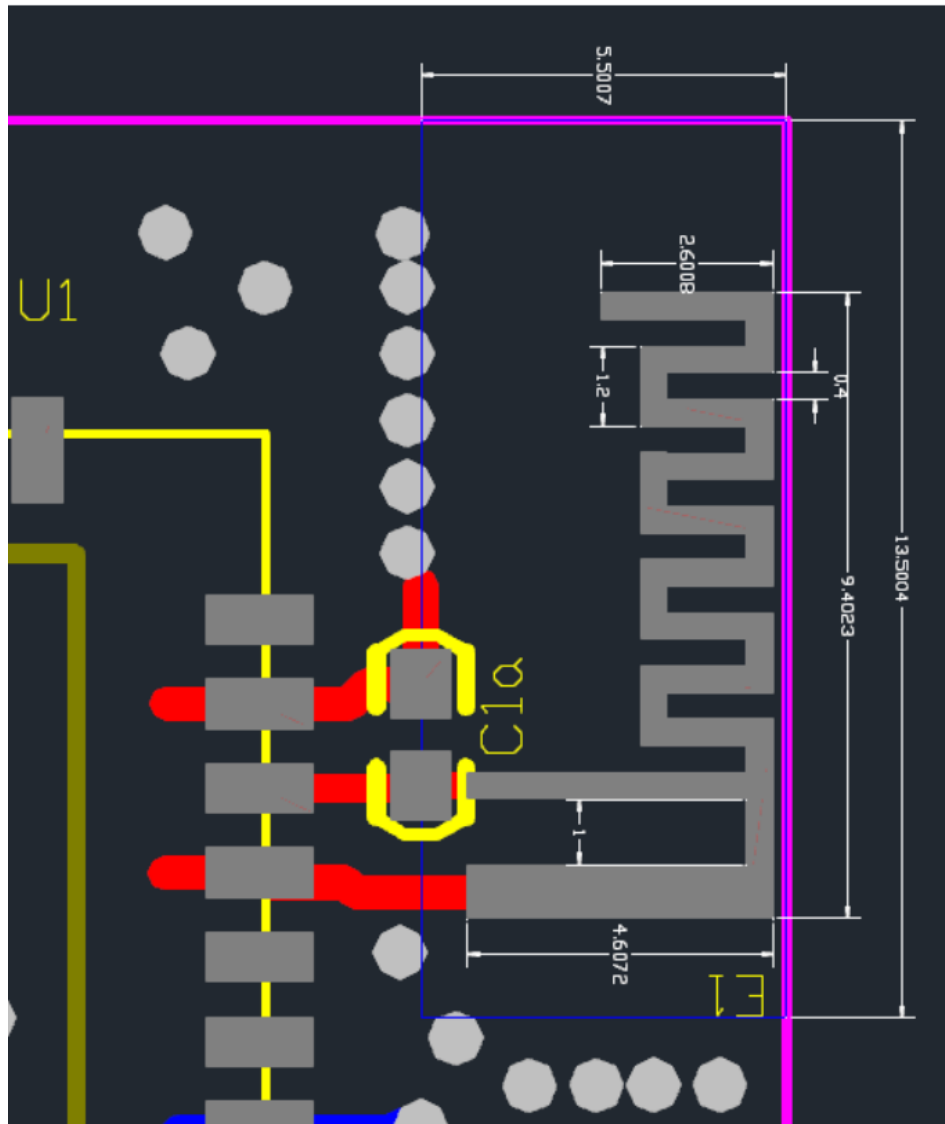
antenna specification

antenna size is 11.20mm*5.5mm From below

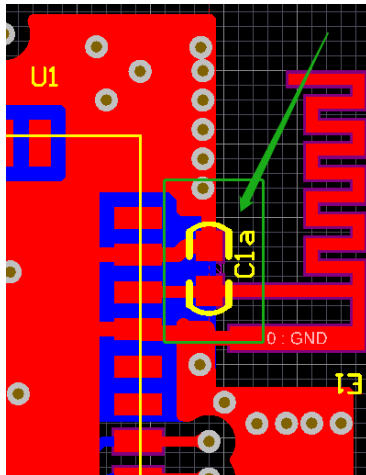
Specification.



Please refer to the chart below for PCB size of RF line terminal.



- 1) Antenna clearance area: there shall be no copper foil routing (package) directly below the antenna area of the user's motherboard(Including power supply, ground and signal layer).
- 2) Module position: ideally, the module should be arranged in a corner of the user's motherboard, PCB The antenna is located far from the motherboard End. This position minimizes the clearance area of the antenna.



C1a is the antenna matching capacitance, which affects the signal strength. There is no need to paste here

Antenna gain: 0dBi