

Security Information

Before using this product, please read the following safety instructions and follow all routine safety precautions.

Any operation that does not comply with this manual may result in damage to this product.

Warning

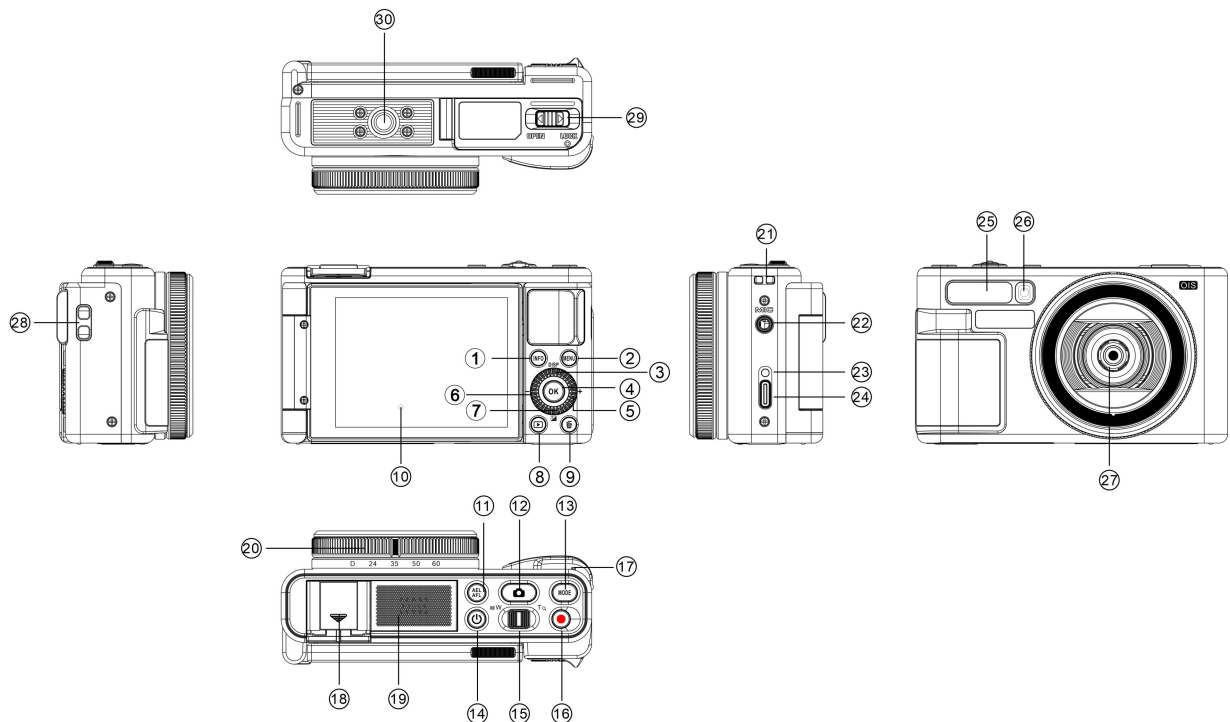
If the battery is used improperly, it may explode, cause a fire, or even chemically burn. Please follow the following precautions:

1. Do not disassemble to avoid short circuiting the battery, do not let metal come into contact with battery terminals, do not crush the battery pack, and do not let the battery pack be subjected to external forces such as knocking, falling, or stepping.
2. Do not place it in high temperatures exceeding 60 degrees Celsius, avoid direct sunlight or park it in a car under intense sunlight.
3. Do not burn or discard in the fire; Do not use damaged or leaking lithium-ion batteries.
4. Please keep the battery out of reach of children; Please keep the battery dry.
5. When using the power adapter, please connect it to the nearest wall socket. If any problems occur while using the device, please immediately unplug the power adapter from the wall socket.

be careful

1. Electromagnetic waves of specific frequencies may affect image quality.
2. Before you start working with this product, please make a trial video to familiarize yourself with its use.
3. When the machine malfunctions, do not disassemble or repair it arbitrarily. Only authorized maintenance personnel can carry out repairs on the machine.
4. If not used for a long time, please charge the device to about 50% every three months before storing it to effectively extend the battery life,
Please fully charge before use.

Introduction to Camera Components

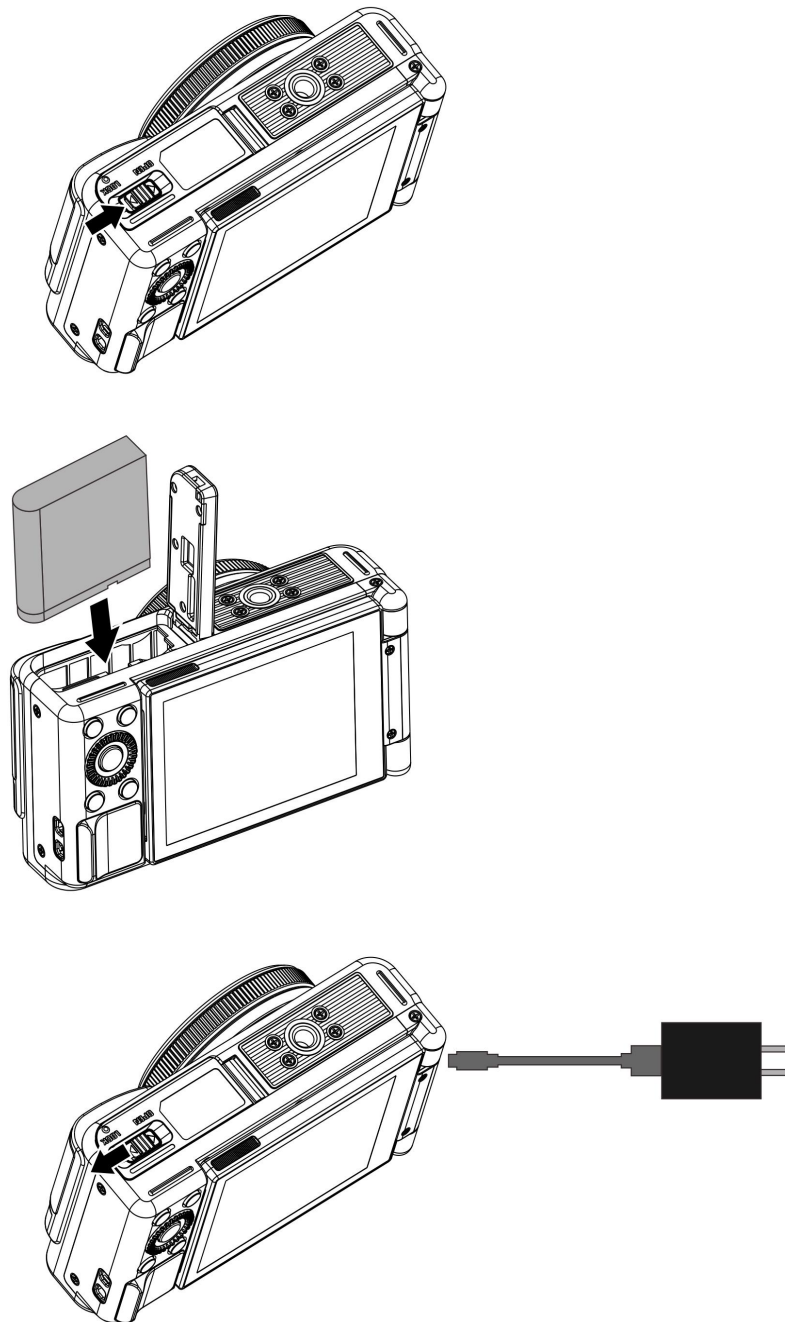


1	INFO main function menu key	Quickly access the main function list.
2	Menu key	Retrieve the function list.
3	Up key (DISP key)	Switch the display mode of the screen; Select upwards in the menu; Increase the volume when playing videos in playback mode.
4	OK button (filter style)	Filter shortcut menu; Confirm function in the menu; Replay video playback or pause playback.
5	Right click (+)	Select to the right in the menu; In P/S mode, the EV/Shutter parameters below can be directly switched; Replay video 2X fast forward.
6	Left click (-)	Select to the left in the menu; In P/S mode, the EV/Shutter parameters below can be directly switched; Replay video 2X fast return.
7	Down key (EV key)	EV shortcut menu; Switch down the menu in the menu; Reduce the volume when playing videos in playback mode.
8	Playback key	Enter/exit playback mode; End playback when replaying the video.
9	Delete key	Quickly delete the last file.
10	display	Preview of camera images and playback of local video photos.
11	exposure lock key/focus	Simultaneously lock/unlock the current exposure and current focus.

	lock key	
12	Photo button	Two segment button, lightly press to focus in photo and video modes; Press again to take a photo in photography mode; In other modes, simply tap to exit the preview mode.
13	Mode shooting mode switch key	Retrieve the list of shooting modes.
14	Power button	Press and hold for 2 seconds to turn on/turn off.
15	W/T zoom key	When in video/camera mode, adjust the zoom by moving left and right; Switch the W terminal in playback mode to enter playback thumbnail mode; stay When replaying images, turn the T terminal to zoom in and view.
16	record button	Start/Stop Recording.
17	Built in microphone	Video and audio recording.
18	Hot shoe interface	External dedicated flash for external use.
19	Speaker interface	Play sound.
20	Focusing Ring	Fixed focal segment adjustment ring, quick switching between D, 24mm, 35mm, 50mm, and 60mm.
21	Lens cover buckle	Fasten the lens cover.
22	MIC microphone interface	External microphone.
23	Charging indicator light	It stays on during charging and turns off when fully charged.
24	USB interface	External USB cable for charging/connecting to computer.
25	Nameplate	Nameplate identification.
26	AF Assist Lamp	Assist in focusing below LV6 in dark environments.
27	Camera lens	View the scene.
28	Wrist buckle	Buckle the wrist strap.
29	Battery compartment	Install the battery and storage card.
30	1/4 screw hole	Install the tripod.

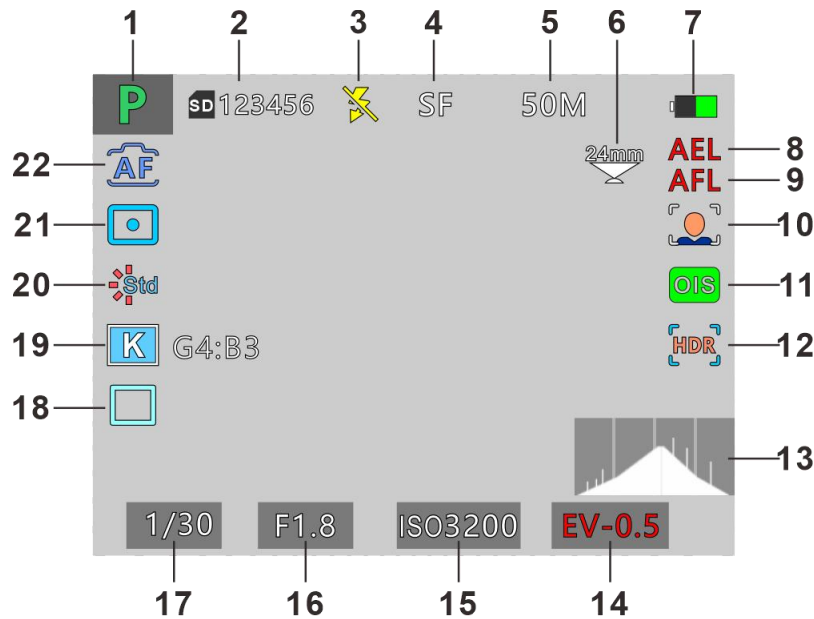
- Fixed focal length mode: 24mm corresponds to a camera resolution of 50M, 35mm corresponds to a camera resolution of 24M, 50mm corresponds to a camera resolution of 12M, and 60mm corresponds to a camera resolution of 8M (Digital Zoom not applicable in fixed focus mode) .
- When using the flash, please manually turn it on and press the flash button to select the function, while also turning on the menu flash function option.
- Flash cannot be used in continuous shooting mode and recording mode.

Installing batteries and charging



- Install the battery into the camera according to the direction shown in the diagram.
- Low battery display: When the voltage of the battery is too low, the battery level icon in the upper right corner of the display screen will turn red. Please charge the battery promptly after low battery appears to avoid affecting your use.
- When using a memory card that has been used by other devices for the first time, be sure to perform formatting on the camera.
- It is recommended to use regular U3 level storage cards. Storage cards below U3 level cannot be guaranteed to function properly.

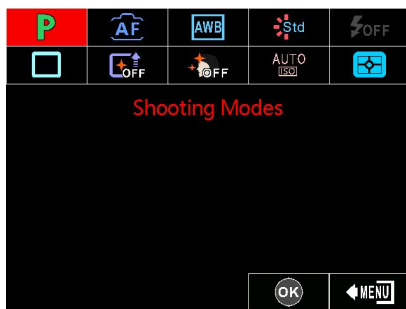
Preview interface



1	Shooting mode	12	Pixel Binning+HDR
2	Remaining number of available photos	13	Histogram
3	Flash status	14	Exposure compensation value
4	Image quality status	15	ISO sensitivity value
5	Photo resolution	16	Aperture value
6	Fixed focal segment Or W/T zoom bar	17	Shutter value
7	Battery icon	18	Single shot/continuous shooting/timed photography
8	Exposure Lock	19	White Balance status/ white balance offset value
9	Focus Lock	20	Filter status
10	Face tracking	21	Metering Modes status
11	OIS	22	Focus modes status

- Press and hold for 2 second to turn on the camera and enter the preview main interface.
- Set the required functional options through settings such as the settings menu and camera mode application.
- Lightly press the camera button to focus, and press the camera button again to take a photo.
- Press the 'Record' button to start recording; Press the 'Record' button again to stop recording.

INFO main function menu



【Press the INFO key on the preview main interface to bring up the INFO main function menu, select by pressing up/down/left/right, confirm by pressing the OK key, and exit by pressing the menu key】

	Shooting modes	Program Mode/Shutter Priority/Scene Selection /Standard Video/Automatic Mode, you can choose the desired mode for taking photos or recording.
	Focus modes	Auto focus/Real time focusing, you can choose the desired focus method for taking photos.
	White Balance	Auto/Daylight/Cloudy/Tungsten Light/Fluorescent(H)/Fluorescent(L)/Color Temperature 3000K~9000K(white balance offset), with the option to select the desired white balance parameters for photography.
	Filter Style	Standard/Natural/Vivid/Monotone/High Contrast B&W/Negative/High Contrast/Retro/CCD/Warm Colors/Cold Colors/Red Tone /Green Tone/Blue Tone/Yellow Tone, with the option to select the desired filter style parameters for photography.
	Flash Mode	Off/Auto Flash/Fill Flash, and select the desired flash mode according to the lighting environment for taking photos.
	Drive Mode	Single shooting/continuous shooting:3/continuous shooting:5/continuous shooting:7/Self-timer: 2 sec/Self- timer: 5 sec/Self- timer: 10 sec, can choose single shot/continuous shot/fixed shot for taking photos.
	Enhance	Enhance Off/Pixel Binning/Pixel Binning+HDR, you can choose the desired way to take photos.
	Beauty	Off/On, you can choose the desired way to take photos.
	ISO	ISO Auto/ISO 100/ISO 200/ISO 400/ISO 800/ISO 1600/ISO 3200 , You can choose the desired IOS sensitivity for taking photos.
	Metering Modes	Average/Center/Spot , you can choose the desired way to take photos.

Photo menu



【Press the menu button on the preview main interface to enter the photo menu, select by pressing up/down/left/right, confirm by pressing the OK button, and exit by pressing the menu button】

Shooting Modes	Program Mode/Shutter Priority/Scene Selection/Standard Video/Automatic Mode
Resolution	50M/24M/12M
Quality	Super Fine/Fine/Normal
Photo Ratio	4 : 3/16 : 9
Timestamp	Off/Date/Date&Time
Focus modes	AF/Real time focusing
Face Tracking	Off/On
AF Assist Lamp	Off/Auto
White Balance	Auto/Daylight/Cloudy/Tungsten Light/Fluorescent(H)/Fluorescent (L)/Color Temperature 3000K~9000K
Filter Style	Standard/Natural/Vivid/Monotone/High Contrast B&W/Negative/High Contrast/Retro/CCD/Warm Colors/Cold Colors/Red Tone /Green Tone/Blue Tone/Yellow Tone
Beauty	Off/On
Enhance	Enhance Off/Pixel Binning/Pixel Binning+HDR
Exposure Compensation	-3~+3
ISO	ISO Auto/ISO 100/ISO 200/ISO 400/ISO 800/ISO 1600/ISO 3200
ISO-A Upper Limit	3200/1600/800/400/200/100
Metering Modes	Average/Center/Spot
Flash Mode	Off/Auto Flash/Fill Flash
Drive Mode	Single shooting/continuous shooting:3/continuous shooting:5/continuous shooting:7/Self-timer: 2 sec/Self- timer: 5 sec/Self- timer: 10 sec
Interval Timer shooting	Off/3 Sec/5 Sec/10 Sec/30 Sec/1Min
Interval Mode Duration	Unlimited/5 Min/10 Min/15 Min/20 Min/30 Min/60 Min
OIS	Off/On

- Press the Mode key to switch between setting K value/white balance offset in the white balance menu and setting contrast/saturation/sharpness/tone/hue in the filter style menu.
- The resolution of Pixel Binning and Pixel Binning+HDR is fixed at 12M (Not applicable to fixed focus mode and fixed

focal segment mode) .

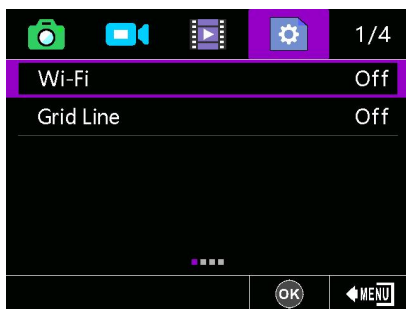
Video menu



【After entering the photo menu by pressing the menu button on the preview main interface, press the up button and then the right button again to switch to the recording menu interface (or you can directly press the right button continuously to switch to the recording menu interface). Press up/down/left/right to select, press OK to confirm, and press the menu button to exit】

Resolution	4K30FPS/2.7K60FPS/2.7K30FPS/1080P120FPS/1080P60FPS/ 1080P30FPS/720P120FPS/720P60FPS/720P30FPS
OIS	Off/On
Pre Record	Off/On
Timestamp	Off/Date/Date&Time
Microphone	0~20
Slow Motion	Off/1080P 4X/720P 4X
Loop Recording	Off/1 Min/3 Min/5 Min
Time-Lapse Video	Off/1 Sec/3 Sec/5 Sec/10 Sec/30 Sec/1Min
Duration	Unlimited/5 Min/10 Min/15 Min/20 Min/30 Min/60 Min

System Settings Menu

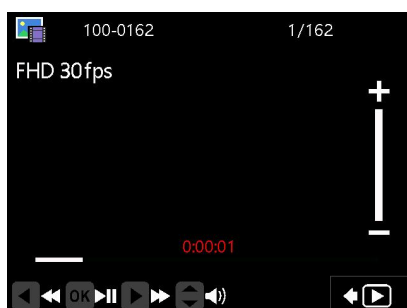


【After entering the photo menu by pressing the menu button on the preview main interface, press the up button and then right-click three times to switch to the system settings menu interface (you can also directly right-click to switch to the system settings menu interface). Press up/down/left/right to select, press OK to confirm, and press the menu button to exit】

Wi-Fi	Off/On
Grid Line	Off/White Line/Yellow Line/Red Line
Sounds	Shutter (Off/On) /Boot-up (Off/On) /Beep (Off/On) /Volume (Off/Low/Standard/High)

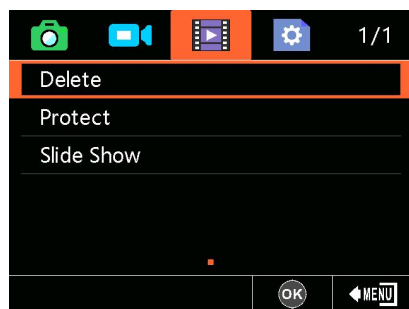
Date&Time Setup	Date and time settings
Date Format	YY/MM/DD MM/DD/YY DD/MM/YY
Language	English/简体中文/繁體中文/日本語/한국어 /Français/Deutsch/Italiano/Español/Português/Русский/Пolski/Tiếng Việt
Screen Brightness	Low/Middle/High
Screen Saver	Off/1 Min/2 Min/3 Min
Auto Power Off	Off/5 Min/10 Min
Light Frequency	50HZ/60HZ
Format Card	Yes/No
Factory Reset	Yes/No
Version	Current software version number in use

Replay videos and photos



- Press and hold for 2 second to turn on the camera and enter the preview main interface.
- Press the replay button to enter replay mode.
- Press the left and right keys to switch between videos and images; Press the INFO key to switch between video playback/photo playback/video and photo playback.
- Play back the video, press the OK button to play/pause playback, press the left button 2X to rewind playback, press the right button 2X to fast forward playback, press the up button to increase playback volume, press the down button to decrease playback volume, and press the playback button to stop playing the video.
- Rotate the T-end of the zoom ring to zoom in on a partial view of the photo, and rotate the W-end of the zoom ring to exit and zoom in on the photo.
- Rotate the zoom ring W end into the thumbnail mode.

Playback Menu



【In the preview main interface, after entering the playback mode, press the menu button to enter the playback menu. Press up/down/left/right to select, press OK to confirm, and press the menu button to exit】

Delete	Single/All
Protect	Protect This File/Unprotect This File/Protect All/Unprotect All
Slide Show	2 Sec/5 Sec

- Pressing the 'delete' button in standby mode can directly delete the current file.
- Locked files cannot be deleted and must be manually unlocked.

APP

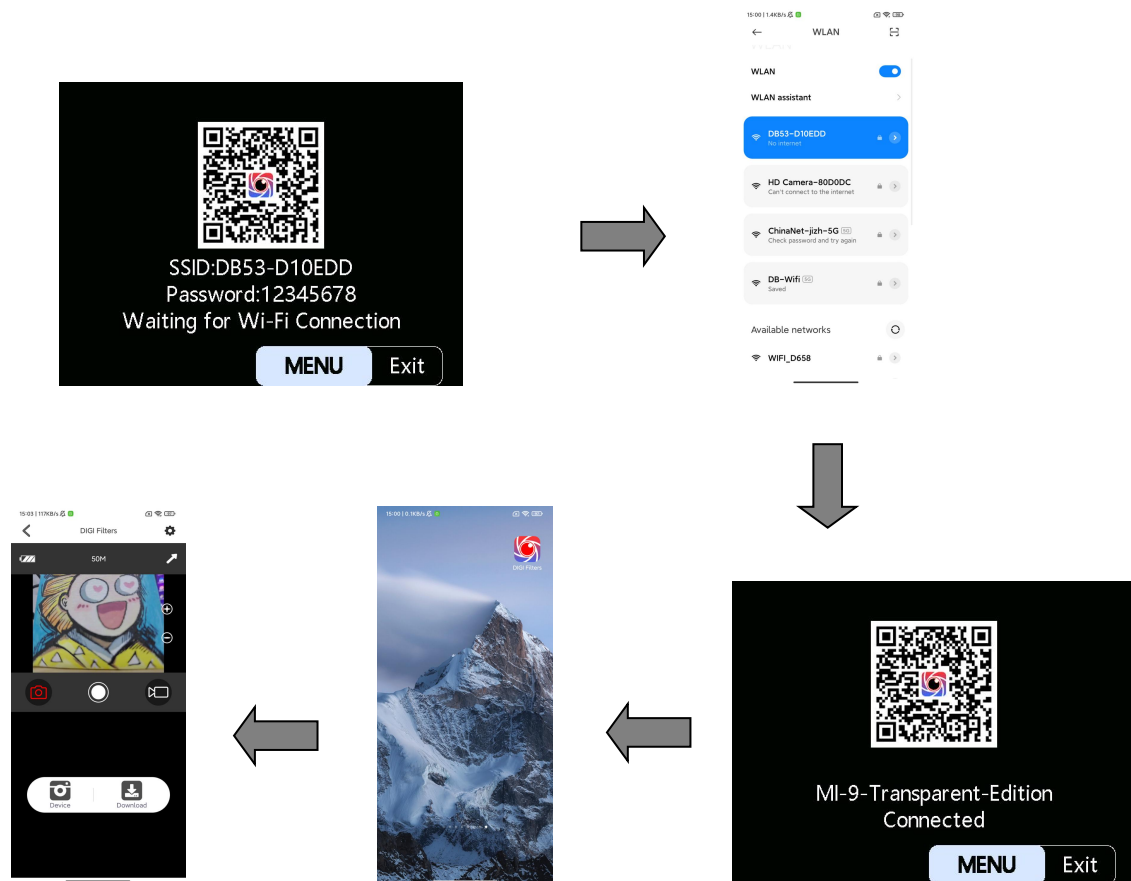
• APP download and installation

- ① Scan the QR code below directly with your phone to download and install.
- ② Download and install [DIGI Filters] directly by searching for it on the App Store or mobile app store.



- If the phone prompts 'Do you want to allow the app to obtain usage permission 'during installation, please select' Yes' for all options.
- When waiting for more than one minute to connect, the Wi-Fi function will automatically exit.
- This Wi-Fi function belongs to a limited distance point-to-point wireless connection, with a maximum distance of about 3 meters. Please use this function within the effective distance
- Due to different mobile phone brands and configurations, sometimes entering the main interface of the APP may be slow or prompt that the device is not connected. Please try entering again.
- APP support: Android 8.0 and above; IOS 12 and above.
- When Wi-Fi fails to connect:
 - ① Restart the local machine and try the above connection steps again.
 - ② Confirm if the Wi-Fi password is entered correctly. The default Wi-Fi password for the camera is 12345678.

•Connect to Wi-Fi



【After entering the photo menu by pressing the menu button on the preview main interface, press the up button and then right-click three times to switch to the system settings menu interface (you can also directly right-click to switch to the system settings menu interface), turn on Wi-Fi, and search for the Wi-Fi name on the phone: DB53 -XXXXXX; Enter password 12345678, click on DIGI Filters to enter the APP preview interface, and start operating】

Technical Specification

Sensor	50 million pixel CMOS sensor
Aperture and Focal length	F No. 1.8 f:5.68mm
Display	2.8" 4 : 3 Display
Zoom	Fixed focal length 24mm, 35mm, 50mm, 60mm/ Digital zoom 2.5X
Shooting distance	0.15m~INF
File format	Video : MP4 Photo : JPEG
Video resolution	4K :3840*2160(30fps) 2.7K: 2688*1512 (60fps) (30fps) FHD 1080P : 1920*1080 (120fps) (60fps) (30fps)

	HD 720P : 1280*720 (120fps) (60fps) (30fps)
Image resolution	50M/24M/12M
Storage medium	External TF card (supports up to 256GB), U3 or above
Microphone	built-in
Speaker	built-in
I/O interface	MIC/USB
Hot boots	Support
Computer system compatibility	Windows 7/8/10/11、 Mac OSX10.5 above
Power input	DC5V/2A Type-C USB
volume	Length 106.5MM X Height 62.5MMX Thickness 45.4MM (with lens cover 4.5MM)
weight	About 193g (With lens cover but without battery)
Storage environment temperature	-20 ~ 60℃
Working environment temperature	0 ~ 40℃

Fault problems and solutions

Fault performance	Possible reasons and solutions
Unable to power on	<ul style="list-style-type: none"> •The battery is not properly installed/the battery is dead, please install the battery correctly/charge the battery. •Is the operating environment temperature within the allowable range? Please use within 0-40 ℃.
The battery runs out quickly	<ul style="list-style-type: none"> •The battery performance will decrease at low temperatures. Please preheat before use. •The battery is not fully charged, please recharge it. •If the situation persists after recharging, it indicates that the battery has reached the end of its service life. Please purchase the product again. •Proper use of automatic shutdown or screen saver, screen brightness, and other functions can effectively save power consumption.
Poor focus	<ul style="list-style-type: none"> •Exceeding the focal length range, shooting within the autofocus range. •The ambient brightness is too low, please manually fill in the light. •The lens has foreign objects that are not clean. Please wipe the lens and reuse it.
Unable to use memory card/unable to record or take	<ul style="list-style-type: none"> •Card damage/TF card does not meet product read-write requirements, replace TF card/format TF card on this machine. •The storage card capacity is insufficient, please check the storage card.

photos	<ul style="list-style-type: none"> •The storage card format is incorrect. Please format it on your computer and try using it again.
The Wi-Fi signal is unstable	<ul style="list-style-type: none"> •If the distance is too far, please use within 3 meters. •The camera is placed on a metal table or shelf, causing wireless signal interference. Please use it in a location away from metal. •The Wi-Fi antenna signal of the mobile phone used is weak, please replace the phone.

Name and content of harmful substances in the product

Component Name	Harmful substances					
	Lead (Pb)	Mercury (Hg)	Cadmium (Cd)	Hexavalent chromium (Cr(VI))	Polybrominated biphenyls (PBB)	Polybrominated diphenyl ethers (PBDE)
Host shell and components	X	O	O	O	O	O
Internal electronic components of the host	X	O	O	O	O	O
Charger casing and components	O	O	O	O	O	O
Internal electronic components of charger	O	O	O	O	O	O

This table is prepared in accordance with the provisions of SJ/T 11364

O: The content of the hazardous substance in all homogeneous materials of the component is below the limit requirements specified in GB/T 26572.

X: The content of the hazardous substance in at least one homogeneous material of the component exceeds the limit requirements specified in GB/T26572, and there is no mature alternative solution in the industry. This product complies with the EU RoHS environmental directive requirements.



FCC Caution.

This device complies with part 15 of the FCC Rules. Operation is subject to the following two conditions: (1) This device may not cause harmful interference, and (2) this device must accept any interference received, including interference that may cause undesired operation. Any Changes or modifications not expressly approved by the party responsible for compliance could void the user's authority to operate the equipment. Note: This equipment has been tested and found to comply with the limits for a Class B digital device, pursuant to part 15 of the FCC Rules . These limits are designed to provide reasonable protection against harmful interference in a residential installation. This equipment generates uses and can radiate radio frequency energy and, if not installed and used in accordance with the instructions, may cause harmful interference to radio communications. However, there is no guarantee that interference will not occur in a particular installation. If this equipment does cause harmful interference to radio or television reception, which can be determined by turning the equipment off and on, the user is encouraged to try to correct the interference by one or more of the following measures: -Reorient or relocate the receiving antenna. -Increase the separation between the equipment and receiver. -Connect the equipment into an outlet on a circuit different from that to which the receiver is connected. -Consult the dealer or an experienced radio/TV technician for help.

The device has been evaluated to meet general RF exposure requirement. The device can be used in portable exposure condition without restriction.