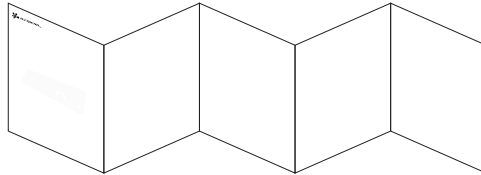


RF425說明書

尺寸: H 125 X W 525 mm



PANTONE BlackC黑色

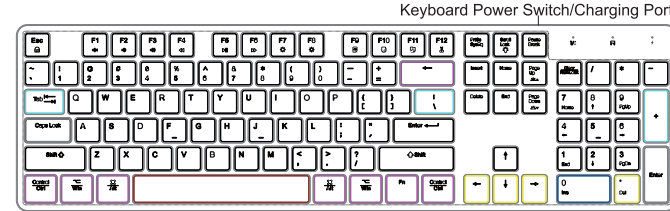


步驟1.
如左圖說明
橫向彈簧折

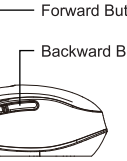
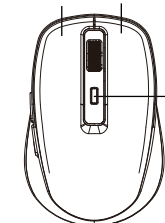


RF425 Backlit Wireless Keyboard and Mouse Combo

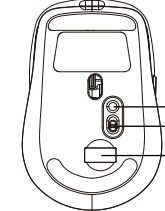
Product overview



Left Button Right Button



Charging Port



Light Mode Switch
Power Switch
USB Receiver

Product Specification

Model: RF425 Backlit Wireless Keyboard and Mouse Combo

KEYBOARD

Connection: 2.4G Wireless Connection
Dimension: (L)435*(W)125*(H)20.5mm
Net Weight: 1 lb
Working range: 10M
Battery capacity: 1500 mAh
Working current(without backlit): 2mA
Working hour(without backlit): 750 hours
Working current(with the brightest backlit): 320mA
Working hour(with the brightest backlit): 9 hours
Charging time: 3.5 hours
Backlit sleep mode: after 2 minutes of not use
Keyboard sleep mode: after 30 minutes of not use
System Requirement: Windows XP, Windows 7, Windows 8, Windows 10, Mac OS

MOUSE

DPI: 800/1200/1600/2000
Weight: 80g
Battery Capacity: 650mAh
Maximum Working Current: 16mA
Working Distance: 10m
Sleep Mode: If the mouse doesn't move in 90s, it will enter backlit sleep mode. If no movements for over 8 minutes, it will enter deep sleep mode.
Compatible Systems: Windows XP, Windows 7, Windows 8, Windows 10, Mac OS

Package include

- 1 x backlit wireless keyboard
- 1 x backlit wireless mouse
- 1 x USB receiver (under the mouse)
- 1 x charging cable
- 1 x manual

2.4G wireless mode connection

1. Plug the USB dongle into your device.
 2. Turn on the keyboard and mouse.
 3. The keyboard and mouse will connect to your device automatically.
- If USB dongle doesn't connect to your device automatically, please reference below:

KEYBOARD

1. Turn on the keyboard.
2. Please hold ESC and press K key, the num lock indicator will slowly flashes. Then plug the USB receiver into your device within 15 seconds.

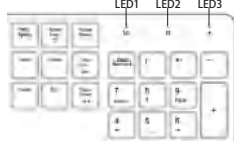
If connect successfully, the num lock indicator will flash 5 times and off.

MOUSE

1. Turn on the mouse
2. Plug the USB receiver into your device.
3. Please press scroll wheel and right button together then connect to pair.

Operation guidance

● KEYBOARD-LED Indicator light



LED1: Num lock(low power)
LED2: Caps Lock
LED3: Charging

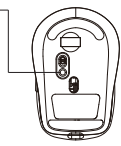
Low Battery: LED1 flashes slowly
Charging: LED3 is always on, light off after fully charged

● KEYBOARD-Backlit operation guidance

1. Press **[Fn] + [F7]** to switch backlit color
2. Hold and press **[Fn] + [F7]** for 5 seconds to turn on/off backlit
3. Press **[Fn] + [F8]** to increase backlit brightness
4. Press **[Fn] + [F9]** to decrease backlit brightness

Light mode switch:

1. Long press the switch for 3 seconds to turn off the light, and long press it again for 3 seconds to turn on the light.
2. Single press the switch, a total of 21 light modes will show on in cycles.

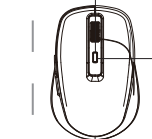


Battery Charging: The red light of the scroll wheel will stay on.
The Battery Is Full: The red light of the scroll wheel will turn off.
Battery is Low: RGB backlit red light will flash.
Mouse Jiggler mode is on: The green light of the scroll wheel will stay on.
Mouse Jiggler mode is off: The green light of the scroll wheel will turn off.



Note:

1. If no movements of the mouse for 90 seconds, the mouse will enter sleep mode, and the mouse backlight will automatically turn off. You can wake it up by clicking any buttons;
2. If no movements of the mouse for 8 minutes, the mouse will enter deep sleep mode, and all LED lights will automatically turn off. You can wake it up by clicking any buttons;
3. In Mouse Jiggler mode, after the mouse enters deep sleep, the mouse cursor will not stop moving unless you press and hold DPI for 3 seconds to exit Mouse Jiggler mode;
4. If there is a delay or the mouse backlight turns off during use, please fully charge the mouse.



Mouse Jiggler mode switch:

1. Long press DPI for 3 seconds to enter Mouse Jiggler mode(the green light of the scroll wheel will turn on)
2. Long press DPI again for 3 seconds to exit Mouse Jiggler mode(the green light of the scroll wheel will turn off)

Note: Move the mouse in Mouse Jiggler mode, the mouse can work normally. If the mouse didn't move in 5 seconds, the mouse will drift automatically (Enter Mouse Jiggler mode)

Key and Function

Key	Windows system	Mac OS system
F1 ⏮	Mute	Mute
F2 ⏮	Volume down	Volume down
F3 ⏮	Volume up	Volume up
F4 ⏮	Prev. Track	Prev. Track
F5 ⏮	Play/Pause	Play/Pause
F6 ⏮	Next Track	Next Track
F7 +	Decrease the brightness	Decrease the brightness
F8 +	Increase the brightness	Increase the brightness
F9 ⏮	Select all	Select all
F10 ⏮	Copy	Copy
F11 ⏮	Paste	Paste
F12 ⏮	Cut	Cut
ESC ⏮	Please hold FN and press ESC key to turn on/off FN function.	

Troubleshooting

1. Please make sure to fully charge keyboard and mouse before use.
2. If the keyboard and mouse have lag problem, please check if the battery is low and fully charge it.
3. Keyboard will switch to mac / win mode automatically according to your device.
4. On mac mode, there is no num lock key on standard mac keyboard. However, you may choose "system Preferences", then go to "Accessibility" - "Mouse & Trackpad" and look for an option called "Enable Mouse Keys" to enable num lock.

安全聲明

開始使用前請閱讀以下事項並請保留此聲明作為未來之依據。
請勿摔落或撞擊您的鍵盤/滑鼠。
請勿在強烈震動環境下使用您的鍵盤/滑鼠，因為震動可能損毀您的鍵盤/滑鼠。
請勿用任何方式拆解或改變您的鍵盤/滑鼠，自行拆解或改變您的鍵盤/滑鼠將造成，您的保固失效，或有可能造成短路。
請勿使用您的鍵盤/滑鼠於潮濕的環境中，液體滲入鍵盤/滑鼠中將可能造成產品損壞或有可能導致短路。
請勿將金屬特質插入滑鼠主體中。
開始使用前請閱讀以下事項並請保留此聲明作為未來之依據。
經型式認證合格之低功率射頻電機，非經許可，公司、商號或使用者均不得擅自變更頻率、加大功率或變更原設計之特性之功能。
低功率射頻電機之使用不得影響飛航安全及干擾合法通信；經發現有干擾現象時，應立即停用，並改善至無干擾時方得繼續使用。
前述合法通信，指依電信法規定作業之無線電通信。
低功率射頻電機須受合法通信或工業、科學及醫療用電波輻射性電機設備之干擾。

FCC STATEMENT :

This device complies with Part 15 of the FCC Rules. Operation is subject to the following two conditions:
(1) This device may not cause harmful interference, and
(2) This device must accept any interference received, including interference that may cause undesired operation.

Warning: Changes or modifications not expressly approved by the party responsible for compliance could void the user's authority to operate the equipment.

NOTE: This equipment has been tested and found to comply with the limits for a Class B digital device, pursuant to Part 15 of the FCC Rules. These limits are designed to provide reasonable protection against harmful interference in a residential installation. This equipment generates uses and can radiate radio frequency energy and, if not installed and used in accordance with the instructions, may cause harmful interference to radio communications. However, there is no guarantee that interference will not occur in a particular installation. If this equipment does cause harmful interference to radio or television reception, which can be determined by turning the equipment off and on, the user is encouraged to try to correct the interference by one or more of the following measures:
Reorient or relocate the receiving antenna.
Increase the separation between the equipment and receiver.
Connect the equipment into an outlet on a circuit different from that to which the receiver is connected.
Consult the dealer or an experienced radio/TV technician for help.

The device has been evaluated to meet general RF exposure requirement. The device can be used in portable exposure condition without restriction.