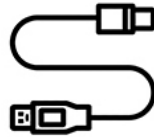


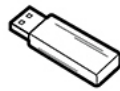
## WHAT'S IN THE BOX



**Core**



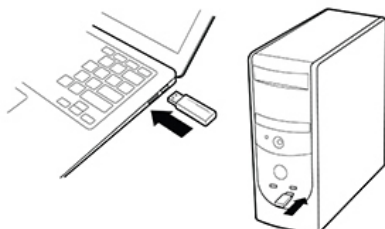
**USB Charging Cable**



**Bluetooth Receiver**

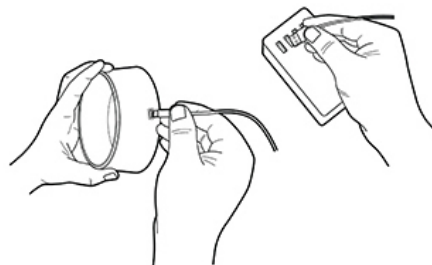
## INSTRUCTIONS FOR USE

### Step 01



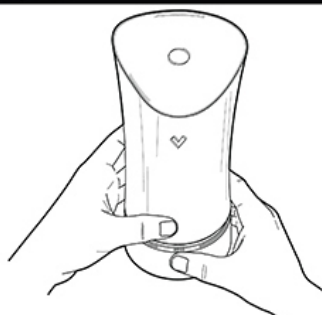
Plug Bluetooth Receiver into your computer's USB port.

### Step 02



Plug in your charger and connect it to Core's base.

### Step 03



Attach Core's body to the base.

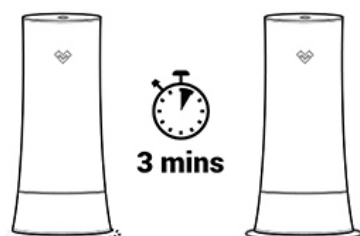
### Step 04

**ON**



Tap ON/OFF button one time to start heating Core. Logo light will turn on and base lights will start to circle.

### Step 05



After 3 minutes, base lights should stop circling, signaling that heating time is over and Core is ready to use.

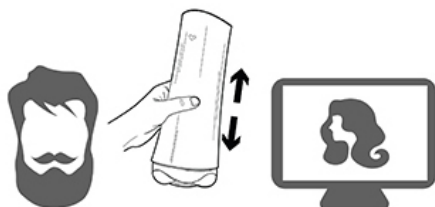
### Step 06



Add some lube into Sleeve's entrance.

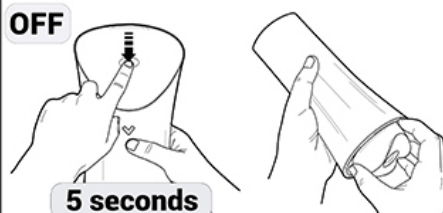
## INSTRUCTIONS FOR USE

### Step 07



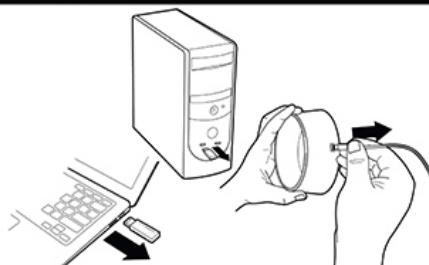
Start using Core.

### Step 08



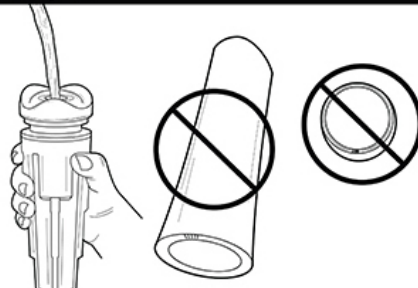
Tap and hold ON/OFF button for 5 seconds to turn off Core. When Core is turned off, logo light should be off as well. Take out Sleeve slowly.

### Step 09



Unplug Bluetooth Receiver from computer's USB port. Unplug charger from Core's base.

### Step 10



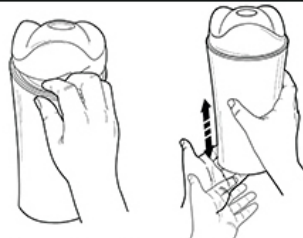
Wash Sleeve.  
Never wash Core's body or the base.

### Step 11



Dry off Sleeve. Remove any remaining moisture from its surface.

### Step 12



Put Sleeve back into Core. Press on the groove to insert Sleeve more easily. Tap on Core's body to make Sleeve settle and fit perfectly within.

## CAUTION

Only the TPE Sleeve can be washed. Other parts cannot be washed!

## USAGE RESTRICTIONS

1. This product is only suitable for adults aged 18 and above.
2. To avoid infectious diseases, please keep the device for personal use and do not share it with others.
3. Please do not use this product if you are feeling unwell.
4. This product is NOT suitable for people who are using medical electronic devices, nor for anyone to whom it may cause bodily harm.

## STORAGE

1. Please turn off the product completely and unplug its charger when not in use.
2. Please do not place the product in high temperature environments, so as to avoid malfunctions, excessive heating or fires.
3. Please do not disassemble the product, as it may cause damage to the device or affect your safety.
4. Please do not use any external equipment to heat or dry the product. For example, you cannot use a microwave oven, a hair dryer, etc. for heating and drying.

## PRODUCT SPECIFICATIONS

Product name: Core

Dimensions (H x W x D): 9.84'' x 4.72'' x 4.72'' (25cm x 12cm x 12cm)

TPE Sleeve Canal Diameter: 0.67'' (1.7cm)

Material: The sleeve is made of TPE. Core body and base are made of ABS.

Battery: Built-in 230 mAh rechargeable lithium battery

Input voltage: 5V

Rated power: 10W

Charging time: About 3 minutes

Use time: About 1 hour

Caution: The electronic part is NOT waterproof. Only the TPE sleeve is washable.

This device complies with part 15 of the FCC Rules. Operation is subject to the following two conditions: (1) this device may not cause harmful interference, and (2) this device must accept any interference received, including interference that may cause undesired operation.

Any changes or modifications not expressly approved by the party responsible for compliance

could void the user's authority to operate the equipment.

NOTE: This equipment has been tested and found to comply with the limits for a Class B digital device, pursuant to Part 15 of the FCC Rules. These limits are designed to provide reasonable protection against harmful interference in a residential installation. This equipment generates, uses and can radiate radio frequency energy and, if not installed and used in accordance with the instructions, may cause harmful interference to radio communications. However, there is no guarantee that interference will not occur in a particular installation.

If this equipment does cause harmful interference to radio or television reception, which can be determined by turning the equipment off and on, the user is encouraged to try to correct the interference by one or more of the following measures:

- Reorient or relocate the receiving antenna.
- Increase the separation between the equipment and receiver.
- Connect the equipment into an outlet on a circuit different from that to which the receiver is connected.
- Consult the dealer or an experienced radio/TV technician for help.

The device has been evaluated to meet general RF exposure statement.

The device can be used in portable exposure condition without restriction.

FCC ID: 2AX9M-CORE-1

**Warning:** Changes or modifications to this unit not expressly approved by the part responsible for compliance could void the user's authority to operate the equipment