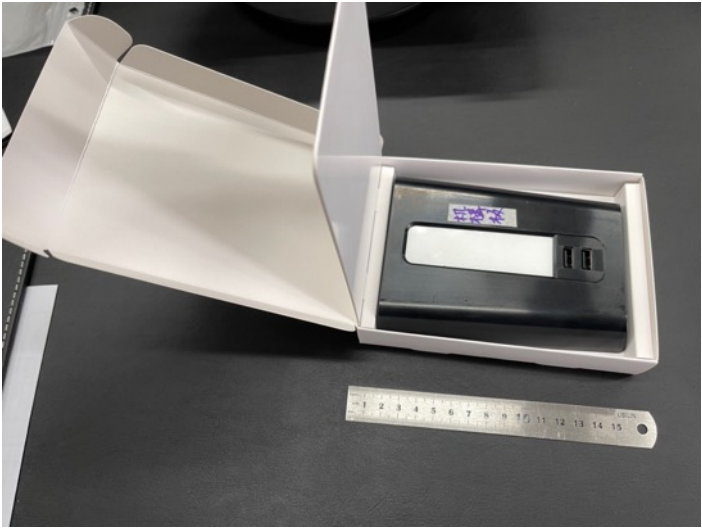
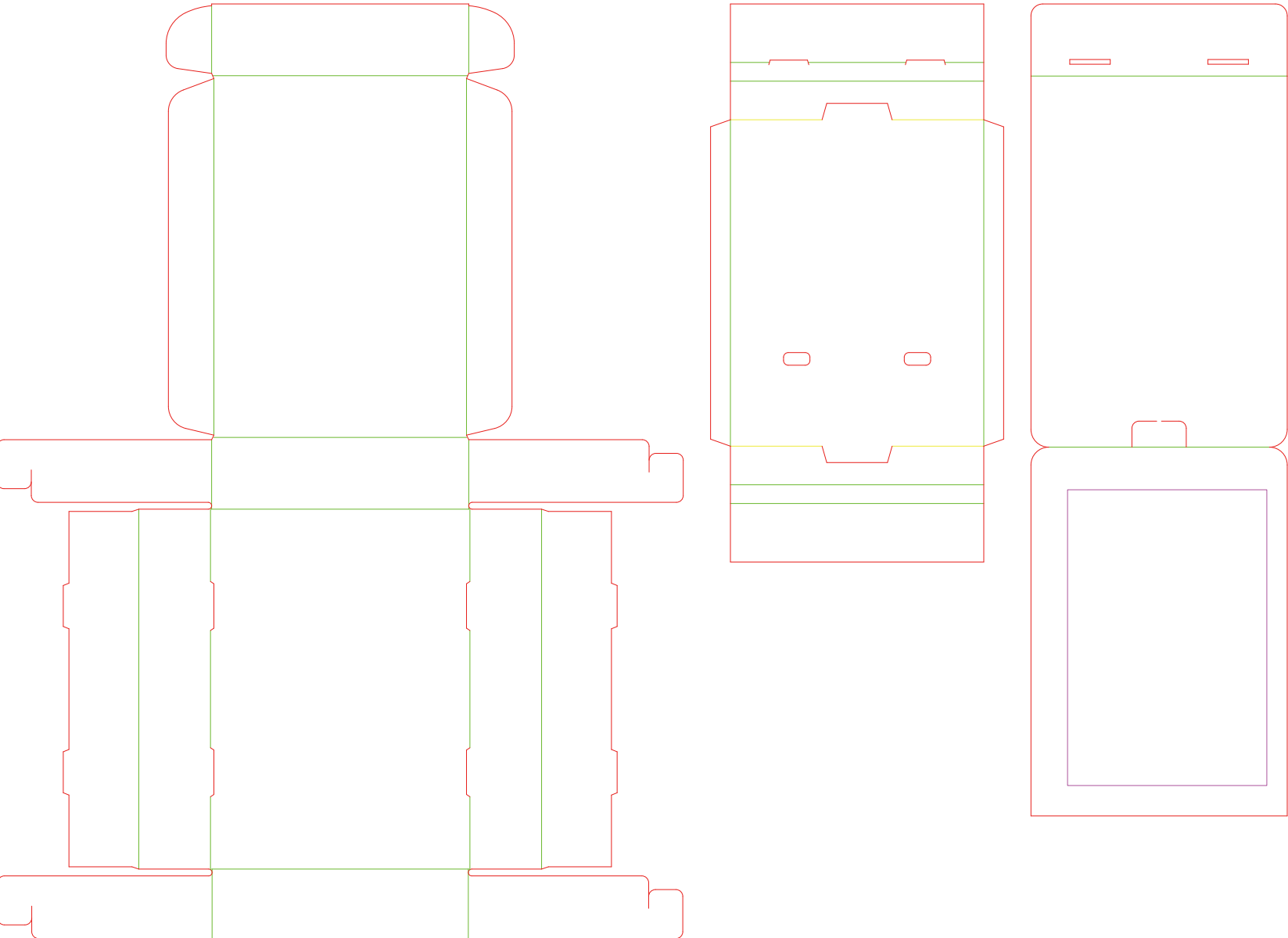


# JOWUA

## **USB Hub with LED Light for Tesla**

Installation Instructions

# USB HUB WITH LED LIGHT FOR TESLA



## USB HUB WITH LED LIGHT FOR TESLA

---

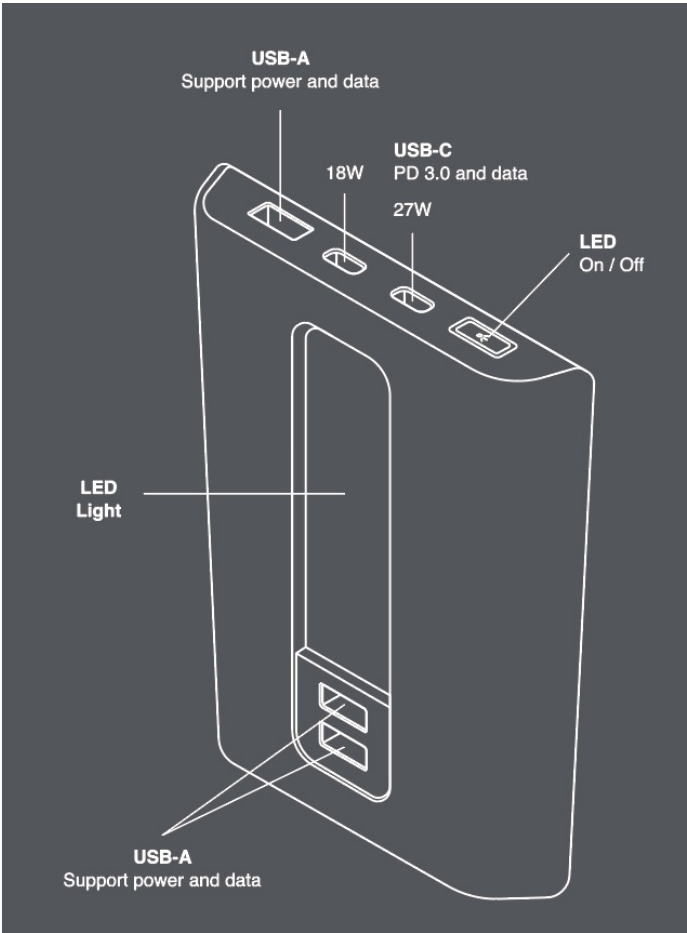


**JOWUA**

**USB Hub  
with LED Light  
for Tesla**

# USB HUB WITH LED LIGHT FOR TESLA

---



JOWUA



For More Details

# USB HUB WITH LED LIGHT FOR TESLA

## USB Hub

with  
LED Light



LED design



PD 3.0 fast charging



Data & entertainment



Perfectly fit with Jowua  
center console organizer

## USB Hub with LED Light for Tesla

### ● Light & Fit

Design for Tesla Model Y & Model 3 with 2021 refresh console (DUAL USB-C ports). Provides the light and helps you find the stuff in the dark.

### ● USB Hub With More Possibilities

Two USB-C ports support PD 3.0 power delivery and data. Other USB ports support DashCam and Sentry Mode storage, music, Boombox, game controller, and other USB device charging.

### ● Dynamic Power Control

Automatic distribution of the available power of your Tesla USB to all connected devices. Ensuring all connected devices charging are dynamically adjusted and optimized.

### ● The Perfect Combo

Perfectly fit with Jowua center console organizer. The ultimate organizing solution for the 2021 refresh console.



#### 4-YEAR / 100,000-MILES Warranty

Extend your warranty coverage to 4 years / 100,000 miles from the date of purchase via product registration.

Make sure to register your product at:  
[www.jowua-life.com/apps/product-registration](http://www.jowua-life.com/apps/product-registration)



[www.jowua-life.com](http://www.jowua-life.com)  
Designed by Jowua  
Made in Taiwan

#### Specification

Model: JOWUAHB5  
Dual Rated Input : 9V=3A; 9V=3A  
Output:  
USB-A Ports: 5V=1.5A (BC v1.2)  
Type-C1: 9V=3A  
Type-C2: 9V=2A  
FCC ID: 2AX7X-JOWUAHB5

Jowua P/N: FG000300104



# USB HUB WITH LED LIGHT FOR TESLA

---

## FCC Statement

This device complies with Part 15 of the FCC Rules. Operation is subject to the following two conditions: (1) this device may not cause harmful interference, and (2) this device must accept any interference received, including interference that may cause undesired operation.

Changes or modifications not expressly approved by the party responsible for compliance could void the user's authority to operate the equipment.

NOTE: This equipment has been tested and found to comply with the limits for a Class B digital device, pursuant to Part 15 of the FCC Rules. These limits are designed to provide reasonable protection against harmful interference in a residential installation. This equipment generates, uses instructions, may cause harmful interference to radio communications. However, there is no guarantee that interference will not occur in a particular installation. If this equipment does cause harmful interference to radio or television reception, which can be determined by turning the equipment off and on, the user is encouraged to try to correct the interference by one or more of the following measures:

- Reorient or relocate the receiving antenna.
- Increase the separation between the equipment and receiver.
- Connect the equipment into an outlet on a circuit different from that to which the receiver is connected.
- Consult the dealer or an experienced radio/TV technician for help.