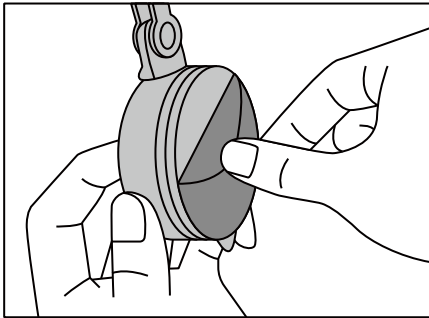


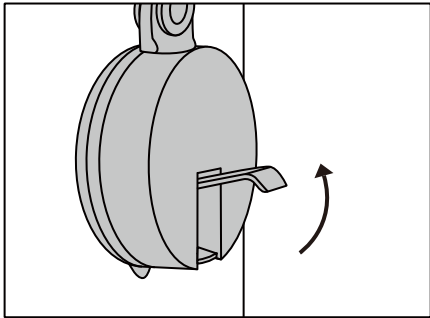
JOWUA

480° Rotation Car Mount
with Wireless Charging

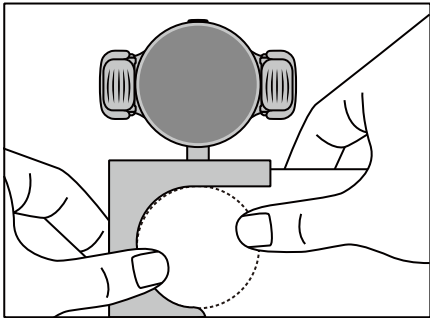
Car Mount Installation Guide



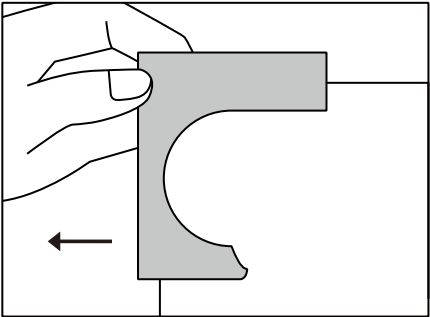
1. Take out the car mount and installation frame from the box together.
2. Make sure the back of the touchscreen is clean and dry.



3. Remove the lining and unlock the suction cup.

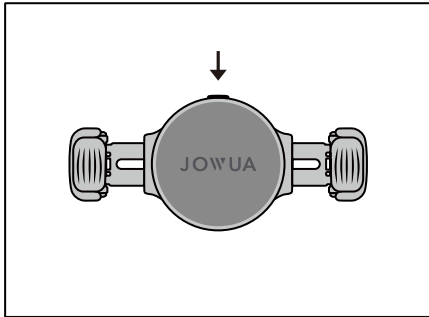


4. Place both car mount and installation frame on the top-left screen, and the included installation frame helps you easily align the car mount.
5. Press the suction cup firmly against the back of the screen and lock it in place.

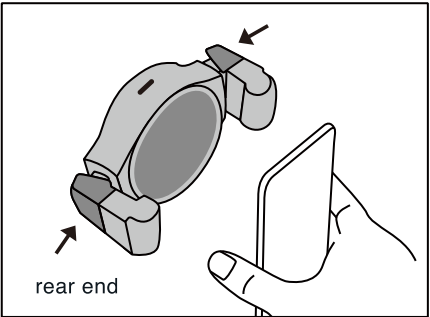


6. Remove the installation frame by sliding it to the left.
7. Plug in the included cables and connect it to any USB-C or USB-A port in your car.

Clamp Size Adjustment Guide



1. Press the button on the top of the car mount to release the side clamps.



2. Place your mobile and press the clamps to fit. Gently take out your phone and put it back again, make sure the clamps are not too tight.

****IMPORTANT:***
Please press the rear end of the clamps,
make sure your phone doesn't slip off.

FCC Statement

This equipment has been tested and found to comply with the limits for a Class B digital device, pursuant to part 18 of the FCC Rules. These limits are designed to provide reasonable protection against harmful interference in a residential installation. This equipment generates, uses and can radiate radio frequency energy and, if not installed and used in accordance with the instructions, may cause harmful interference to radio communications. However, there is no guarantee that interference will not occur in a particular installation. If this equipment does cause harmful interference to radio or television reception, which can be determined by turning the equipment off and on, the user is encouraged to try to correct the interference by one or more of the following measures:

- Reorient or relocate the receiving antenna.
- Increase the separation between the equipment and receiver.
- Connect the equipment into an outlet on a circuit different from that to which the receiver is connected.
- Consult the dealer or an experienced radio/TV technician for help.

FCC Radiation Exposure Statement

This device complies with FCC radiation exposure limits set forth for an uncontrolled environment and it also complies with Part 18 of the FCC RF Rules. This equipment must be installed and operated in accordance with provided instructions and the antenna(s) used for this transmitter must be installed to provide a separation distance of at least 15 cm from all persons and must not be co-located or operating in conjunction with any other antenna or transmitter. End-users and installers must be provided with antenna installation instructions and consider removing the no-collocation statement.

This Device Complies with Part 18 of the FCC Rules

Tips

- * Keep the device dry, do not put it in water or any other liquid, do not do not get it wet.
- * Use the charger at temperatures between -10°C and 60°C .
- * Do not disassemble the charger.
- * Do not place magnetic cards, magnetic recording media, and precision machines too close to the wireless charging area.
- * Do not allow dust or other things to accumulate on the product and the C-type input port.