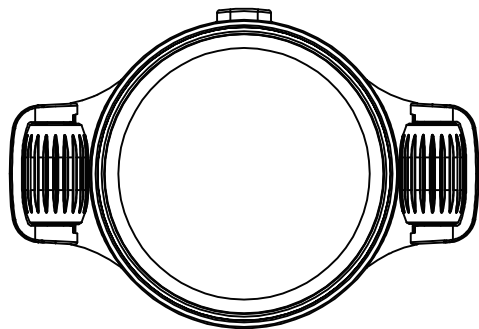


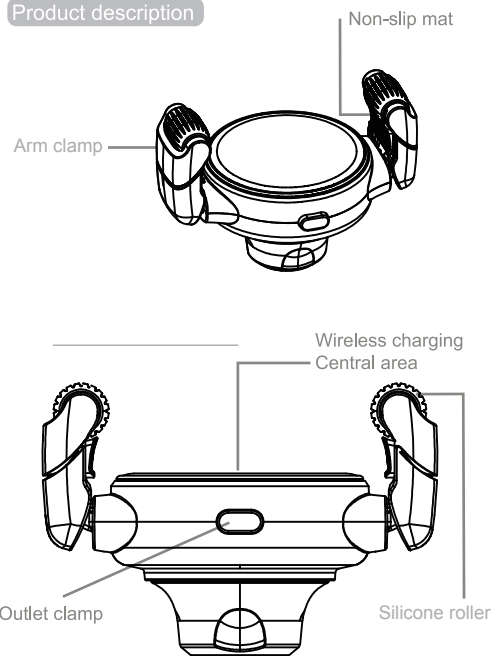
10W Car Wireless Charging

Roller Car Phone Holder



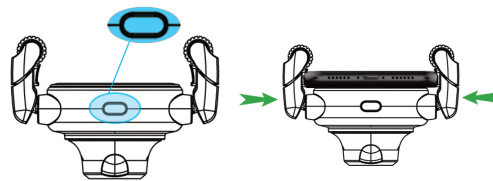
User Manual

Product description

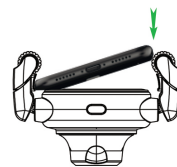


Instructions

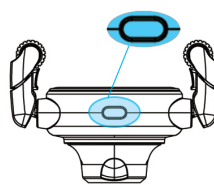
1. Pre Setting: Press the top button to release the arms, put your phone in the middle of the holder and push the left and right arms concurrently to clamp your phone firmly.



2.To mount your phone to the wireless charging center, insert one side of phone and then push other side in.



3.Reset the clamp. Press the button on the top of the holder to release the arm clamp, then follow the step 1 to adjust the arm size with your phone.



Function description

- (1) Fits for Qi standard mobile phones;
- (2) Support 10W charging , as well as 10W / 7.5W /5W wireless charging;
- (3) Push the reset button , and place phone in jaws slantly then push the clamps to hold the phone securely;
- (4) The arm clamp can be flexibly extended, so it is easy to hold different mobile phones;
- (5) This wireless charger comes with over-current protection, overheat protection, short circuit protection;

Product parameters

Material:ABS + PC

Input power:5V2A, 9V/2A

Output power:10W (Max)

Effective Distance of Wireless Charging:3-6mm

Conversion efficiency: standard charging $\geq 70\%$, fast charging $\geq 75\%$

Working frequency:115-205KHz

This device complies with Part 15 of the FCC Rules. Operation is subject to the following two conditions: (1) this device may not cause harmful interference, and (2) this device must accept any interference received, including interference that may cause undesired operation

NOTE: This equipment has been tested and found to comply with the limits for a Class B digital device, pursuant to Part 15 of the FCC Rules. These limits are designed to provide reasonable protection against harmful interference in a residential installation. This equipment generates, uses and can radiate radio frequency energy and, if not installed and used in accordance with the instructions, may cause harmful interference to radio communications. However, there is no guarantee that interference will not occur in a particular installation.

If this equipment does cause harmful interference to radio or television reception, which can be determined by turning the equipment off and on, the user is encouraged to try to correct the interference by one or more of the following measures:

- Reorient or relocate the receiving antenna.
- Increase the separation between the equipment and receiver.
- Connect the equipment into an outlet on a circuit different from that to which the receiver is connected.
- Consult the dealer or an experienced radio/TV technician for help.

Warning: changes or modifications not expressly approved by the party responsible for compliance could void the user's authority to operate the equipment

This equipment complies with FCC radiation exposure limits set forth for an uncontrolled environment. This equipment should be installed and operated with minimum distance 20cm between the radiator and your body.