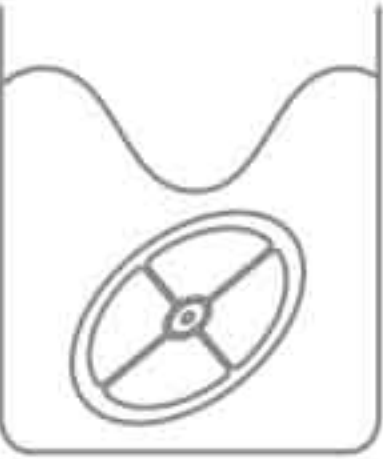


Drink Mini Manual

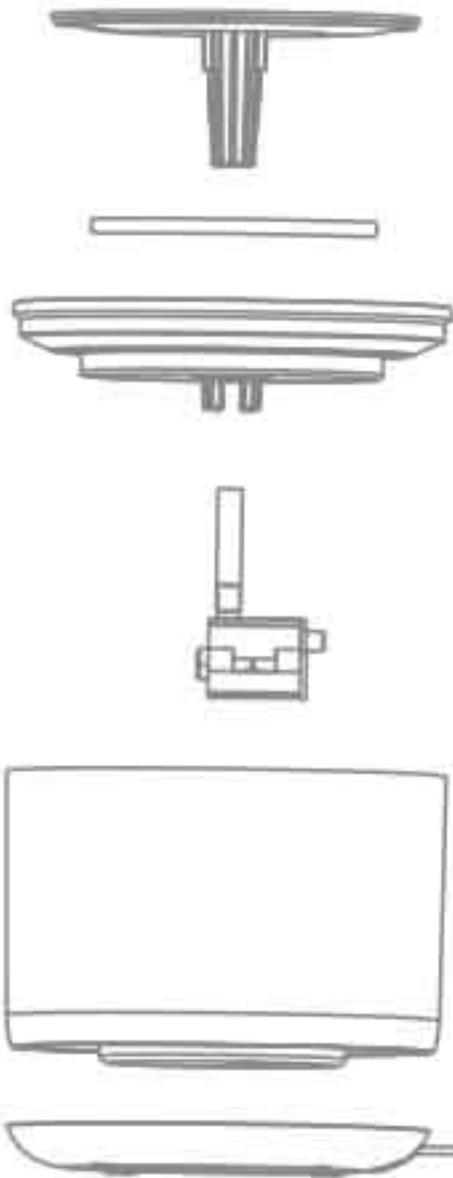
Thank you for choosing Miiibo Drink Mini !!

Quick start

Please soak the filter in clean water for 5 minutes.

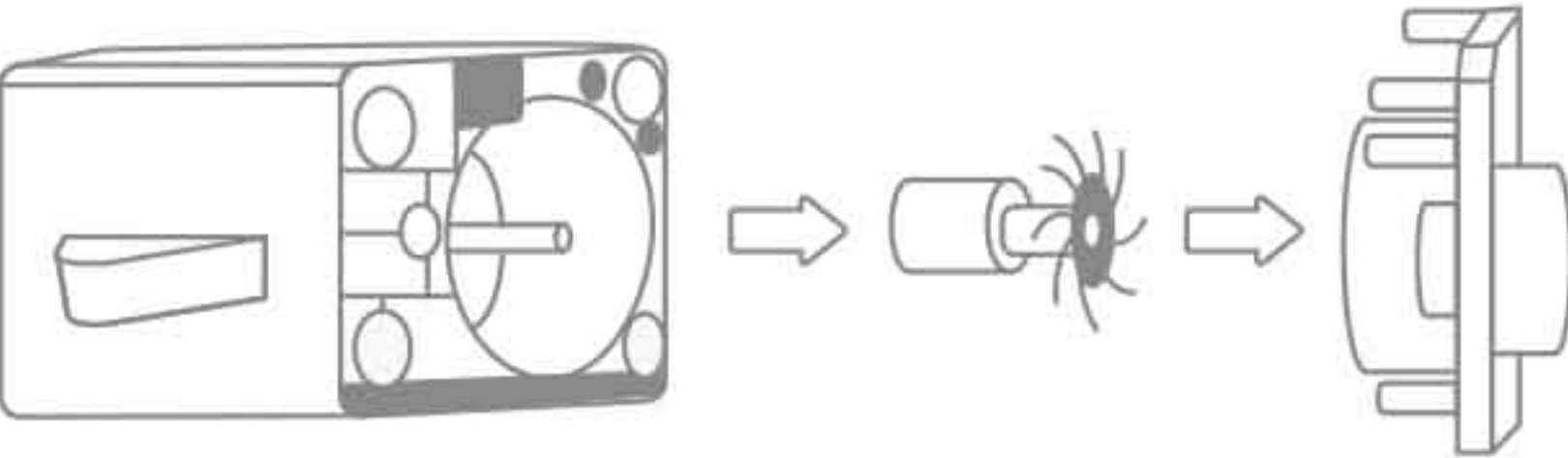


Please assemble the Miiibo Drink Mini by instructions as follows.



Notice

- 1. Please use 5V USB adaptor to charge the Miiibo Drink Mini.
- 2. In case of hair obstruction, please check the pump maintenance guidance as follows.



- 3. The filter is consumable, please clean with clean water at least once a week, and replace with a new filter every month.
- 4. Please protect the power cord from young and naughty pets.
- 5. The adaptor base is not waterproof, please do not immerse the adaptor base in water.

Buttons and Indicators

Blue light on	Default
Blue light flashes	Smart mode (pump works 5 mins and stop 10 mins)
Red light flashes	Filter is expired, please replace the filter
Red light on	Water shortage
Blue & Red light quick flashes	Absent pump
Blue & Red light slow flashes	Obstructed pump

- \*The default mode is the normal working mode.
- \*Click the button at the bottom to turn off the indicator.
- \*Double Click the button at the bottom to switch the default to smart mode (or smart to default mode).
- \*When the red light flashes, please replace a new filter and long press to reset the indicator.

Model: 102MB  
Input: DC5v 1A  
Size: D180\*137mm  
Volume: 1700ML MAX

Miiibo.com

FCC Caution.

This device complies with part 15 of the FCC Rules. Operation is subject to the following two conditions: (1) This device may not cause harmful interference, and (2) this device must accept any interference received, including interference that may cause undesired operation.

Any Changes or modifications not expressly approved by the party responsible for compliance could void the user's authority to operate the equipment.

Note: This equipment has been tested and found to comply with the limits for a Class B digital device, pursuant to part 15 of the FCC Rules. These limits are designed to provide reasonable protection against harmful interference in a residential installation. This equipment generates uses and can radiate radio frequency energy and, if not installed and used in accordance with the instructions, may cause harmful interference to radio communications. However, there is no guarantee that interference will not occur in a particular installation. If this equipment does cause harmful interference to radio or television reception, which can be determined by turning the equipment off and on, the user is encouraged to try to correct the interference by one or more of the following measures:  
-Reorient or relocate the receiving antenna.  
-Increase the separation between the equipment and receiver.  
-Connect the equipment into an outlet on a circuit different from that to which the receiver is connected.  
-Consult the dealer or an experienced radio/TV technician for help.

\*RF warning for Mobile device:  
This equipment complies with FCC radiation exposure limits set forth for an uncontrolled environment. This equipment should be installed and operated with minimum distance 20cm between the radiator & your body.