

Product Description



Specification

Name	Smart Light Switch
Model	LSW02 / LSW04
Power Supply Mode	Neutral + Live Wire
Rated Voltage	AC110~240V/50~60Hz
Rated Power	LED / 150W (Max.) Resistance Load / 500W (Max.)
Wireless Frequency	2.4 GHz
Wireless Standard	IEEE802.11 b/g/n

On/Off Indicator Light Meaning

Indicator Light Color	Activity	Description
Green	Solid	The light fixture is on.
	Solid	The light fixture is off.
	Blinking Rapidly	It's ready for setup with Default/Smart Mode.
	Blinking Slowly	It's ready for setup with AP Mode.
Orange	Off	When you turn off your light fixture, normally the orange indicator is solid, but if the orange indicator is off, there are two situations below: 1. You have turned off it, operation please referred to 4.5 Light Mode under APP Operation . 2. If you haven't turned off it, it means the Light Switch has lost network connection.

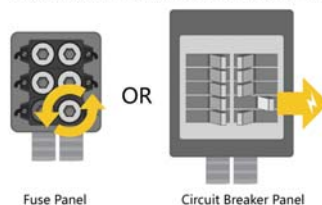
01

Installation Instruction

Step 1

Turn off circuit breaker

Shut OFF power to the circuit powering your light switch, the main circuit breaker, or the fuse panel of your home. Then make sure the power is off by flipping your light switch a few times.



Step 2

Remove off the existing switch

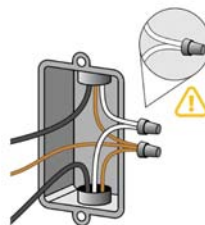
1) Remove the faceplate of your existing light switch. Using your voltage tester, confirm that your existing light switch has no power by testing the wires connected on both sides of the switch. If your voltage tester reads positive for voltage, you may need to turn OFF more than one circuit breaker or remove more than one fuse panel.

02

Step 3

Find the neutral wire and confirm no power in it.

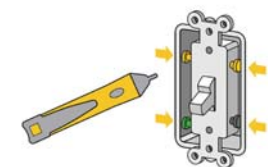
1) Confirm that you have neutral wires in the wall cassette. These are typically white and are not connected to the light switch. A neutral wire is required to install our Smart Light Switch. If the neutral wire is not present, STOP the installation and consult a professional electrician.



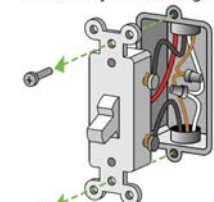
NOTE: A ground wire is optional.

2) Use your voltage tester to confirm that there is no power in the neutral wires from any neighboring circuits. If your voltage tester reads positive of voltage, you may need to turn OFF additional circuits at your breaker panel or fuse panel.

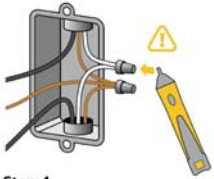
04



2) Use your screwdriver to remove two screws that are securing the light switch to the wall cassette. Once the screws are removed, gently pull out your light switch to detach it from the wall. Do not unscrew any of the wiring at this point.



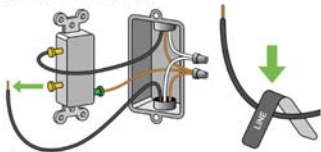
03



Step 4

Remove wires connected to the existing light switch and remove switch from the wall.

Remove the incoming AC LINE wire coming from your circuit breaker panel or fuse panel. This wire is usually black but, depending upon the wiring used, you may have a different wire color in the wall cassette. Then remove all other wires connected to the existing light switch such as the ground wire or the load wire.



QUICK TIP:

Included in the package of our Smart Light Switch, there is a LINE sticker which can be used to label the wire for future reference.

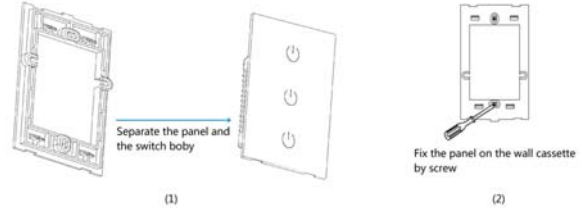
05

Step 5

Separate the panel from our Smart Light Switch

Note: Firstly identify the TYPE of Smart Light Switch in your hand.

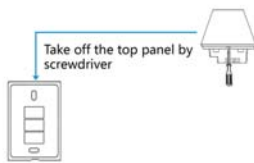
- 1) Separate the panel and switch body, then secure the panel to the wall cassette by screwdriver using the screws included with our Smart Light Switch.



It's ONLY suitable for Smart Light Switch Type: LSW02

- 2) Take a small screwdriver to separate the top panel from the switch.

06

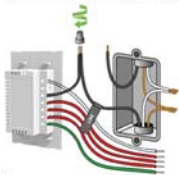


It's ONLY suitable for Smart Light Switch Type: LSW04

Step 6

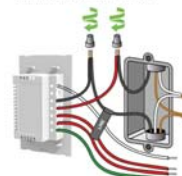
Wiring connection

- 1) Connect the BLACK LINE wire from the back of our Smart Light Switch to the wire you labeled earlier with the LINE sticker using a wire nut. This will supply power to our Smart Light Switch.

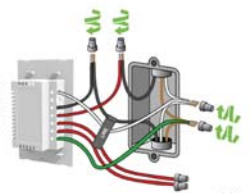


07

- 2) Using another wire nut, connect the RED LOAD 1 wire from the back of our Smart Light Switch to the load wire connected to your light fixture. The RED LOAD 2 or the RED LOAD 3 wire will not be used if you are installing only one-gang configuration, and just cap off the red wires using wire nuts. If you have two-gangs or three-gangs, just connect the RED LOAD 2 or RED LOAD 3 wire from the back of our Smart Light Switch to the OTHER load wires connected to your OTHER light fixtures. The load wire is usually black but, depending upon the wiring used, you may have a different wire color in the wall cassette.



- 3) Connect the WHITE NEUTRAL wire from the back of our Smart Light Switch to the neutral wires in the wall cassette. The colors of the neutral wires are usually white but you may have a different wire color in the wall cassette.



08

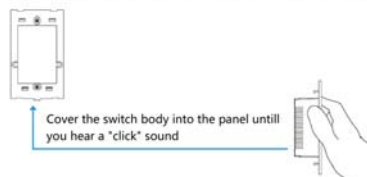
NOTE: If you have a ground wire or ground screw in the wall cassette, it should be connected to the YELLOW&GREEN ground wire on the back of our Smart Light Switch. This ground wire is usually green or bare copper but you may have a different color in the wall cassette. The ground wire is not required so if you do not have it, simply cap off the ground wire using a wire nut.

Step 7

Fixing our Smart Light Switch

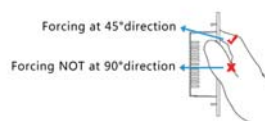
Note: Firstly identify the TYPE of Smart Light Switch in your hand.

- 1) Double check that all connections are secure and then carefully tuck the wires back into the wall cassette behind our Smart Light Switch. Then cover the switch body to the panel which have already been fixed on the wall cassette, completing installation until you hear a "click" sound.



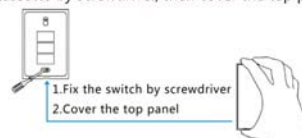
It's ONLY suitable for Smart Light Switch Type: LSW02

09



When you cover the switch body to the panel, you should push the switch body at 45°direction, not directly push the switch body at 90°direction, otherwise, it's hardly to fix switch body and the panel tightly.

- 2) Double check that all connections are secure and then carefully tuck the wires back into the wall cassette behind our Smart Light Switch. Using the screws included with our Smart Light Switch, secure it to the wall cassette by screwdriver, then cover the top panel.



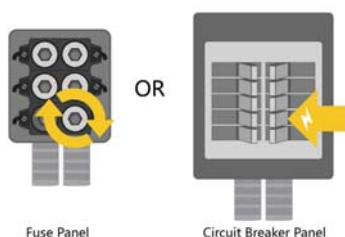
It's ONLY suitable for Smart Light Switch Type: LSW04

Step 8

Turn on circuit breaker

Return to your breaker panel or fuse box to turn the power back ON to the circuits you turned off before installation. And check our Smart Light Switch to confirm if it has been installed correctly and is receiving power.

10



Install "Smart Life" APP

1. APP Download

- 1.1 Scan the below QR Code to download and install the APP.



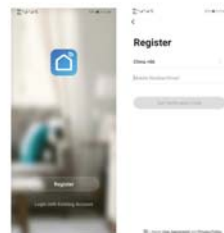
11

- 1.2 Search "Smart Life" in either App Store or Google Play to install the APP.



2. Registration

Open the Smart Life App and enter the register interface, then input the phone number or email address for getting the verification code to register an account. Please just login on if you already have a "Smart Life" account.

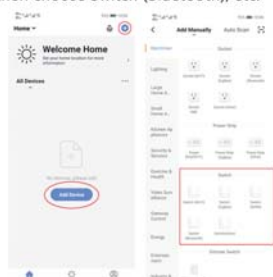


12

3. Add the switch to "Smart Life" APP

Note: This smart light switch can only support 2.4GHz network and can't work with 5.0GHz network. Please check if your home network is 2.4GHz and make sure that your phone have been connected to your Wi-Fi home network.

3.1 Tap "+" button on top right corner or directly press the button "Add Device" to enter the next page. Then choose the correct button under "switch column" based on different protocols, for example, if your switch is Wi-Fi switch, then choose Switch(Wi-Fi). And if your switch is Bluetooth switch, then choose Switch (Bluetooth), etc.



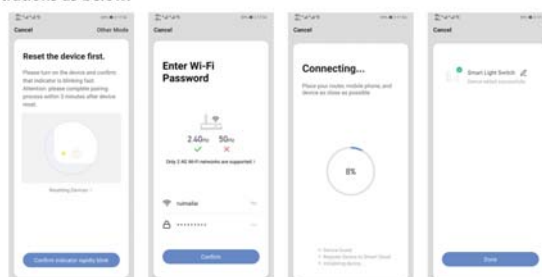
13

3.2 Two modes to connect the switch

Mode One: Smart Mode/Default Mode (Recommend)

- 1) Check the On/Off indicator light on switch rapidly blink or not, if not, hold the On/Off button for 5-10 seconds for reset. If yes, then tap "confirm indicator rapidly blink" to enter next page.
- 2) Type your Wi-Fi name and correct password, then tap "Confirm" to enter next page.
- 3) During connecting, confirm the device, mobile phone and router are as close as possible.
- 4) When successfully connected, it will pop out the "Done" page.

Illustrations as below:

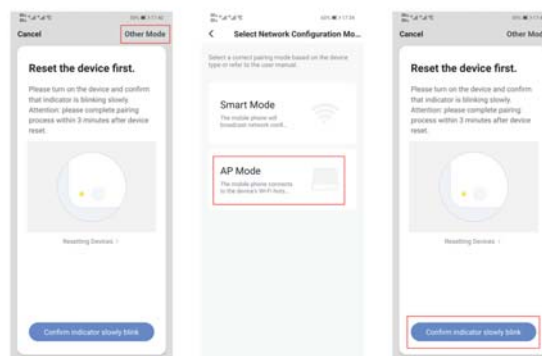


14

Mode Two: AP Mode (Alternative)

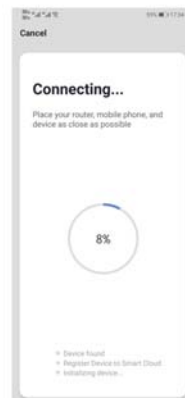
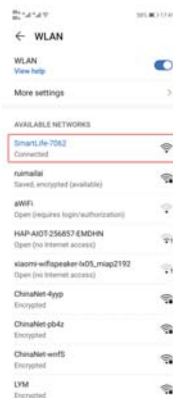
- 1) Tap the button "Other Mode" on the top right corner to choose AP Mode.
- 2) When the On/Off indicator light on switch blink RAPIDLY, press and hold the On/Off button for 5-10 seconds, the On/Off indicator light will blink SLOWLY.
- 3) Make sure the On/Off indicator light blink SLOWLY under the AP Mode connection, then press "confirm indicator slowly blink" to enter next page.
- 4) Type your Wi-Fi name and correct password, then tap "Confirm" to enter next page.
- 5) Connect your mobile phone to the device's hotspot, go to connect, and you will find "SmartLife-xxxx", choose and connect it, it will show "SmartLife-xxxx" connected.
- 6) Go back to connecting page, when it's successfully connected, it will pop out the "Done" page.

Illustrations as below:



15

16



4. APP Operation

After completing the above steps, you can now control the switch with Smart Life APP on this setting page.

- 4.1 All On: Press it to turn on all these switches at one time.
- 4.2 All Off: Press it to turn off all these switches at one time.
- 4.3 Timer: Schedule can be added, and set your switch on or off at any time when you wanted.
- 4.4 Switch name revised: Long press to edit switch name.
- 4.5 Setting

1) Restart Status

OFF: The light fixture is off when you restart the Smart Light Switch.
ON: The light fixture is on when you restart the Smart Light Switch.
Keep as last status: When you restart the Smart Light Switch, the light fixture will keep the same as last status before restarting.

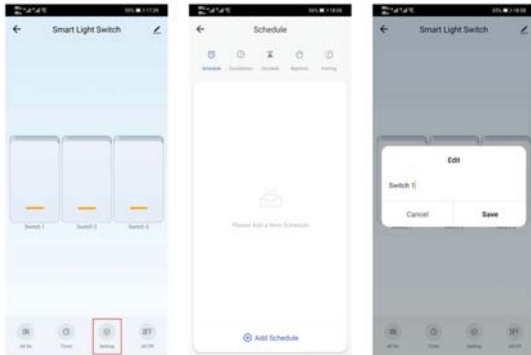
2) Light Mode

Indicate switch on/off: If you choose it, the OFF/ON indicator light is off when you switch off light fixture.
Indicate switch location: If you choose it, the OFF/ON indicator light is on when you switch off light fixture.
Indicator LED off: Our Smart Light Switch don't have such indicator LED because we combined this function for indicator LED with ON/OFF indicator, so just ignore this option.

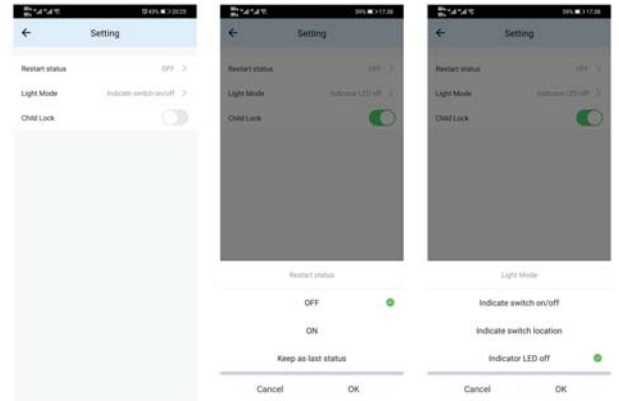
3) Child Lock

If you open this lock, the switch is not function when you turn on/off button manually, but if you press on/off button 5 times continuously, the child lock function will be invalid.

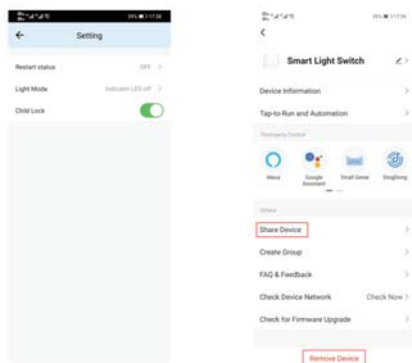
4.6 Share Device: you can share the device to your family numbers, so your family numbers also can control the device.
 Remove Device: if you want to reset the device, you can remove the device from here firstly.
 Illustrations as below:



21



22

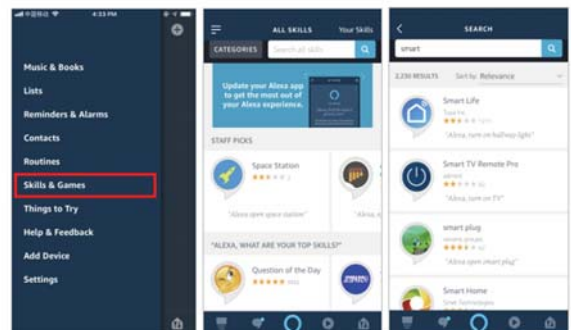


23

5. Link with the third-party access service

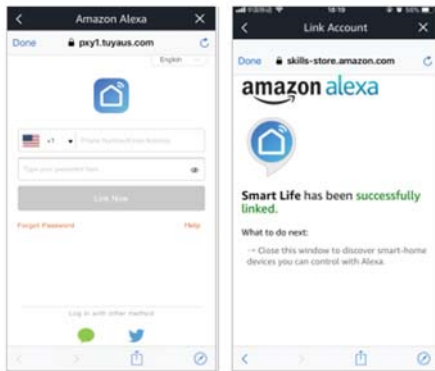
5.1 How to link Smart Life account to Alexa?

- 1) Tap "Skills&Games" in the hamburger menu, then search "Smart Life". Select "Smart Life" and tap "ENABLE" to enable the Skill.



24

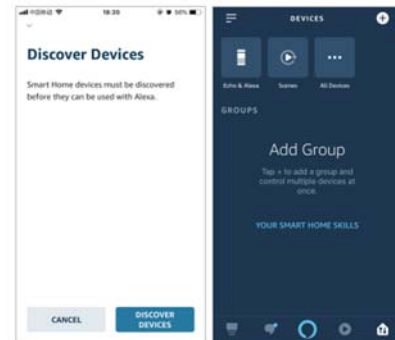
2) You will be redirected to the account link page. Type in your Smart Life account and password, don't forget to select the country/region where your account belongs to. Then tap "Link Now" to link your Smart Life account.



25

3) Control your smart devices through Alexa

I. Tap "DISCOVER DEVICES", wait a few seconds for Alexa to detect the switch from Smart Life APP, then you will find the smart device named "Smart Light Switch" which has been paired to Alexa APP from Smart Life APP.



26

II. Now you can control your smart devices through Alexa. You can use the following voice commands to control your devices (e.g., bedroom light):

"Alexa, turn on bedroom light."

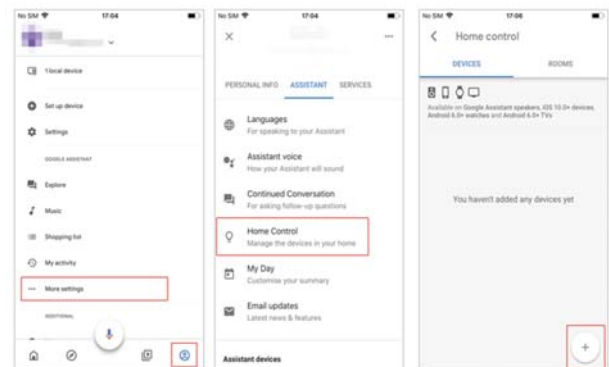
"Alexa, turn off bedroom light."

Note: Every time you change the device's name on Smart Life App, Echo must re-discover before you control them.

5.2 How to link Smart Life account in Home Control?

Note: Due to the Google Home App's known bug, you could only use one Google account to control "Home Control Action". If you sign in Google Home App with several Google accounts, only the first Google account you signed in can be used for "Home Control".

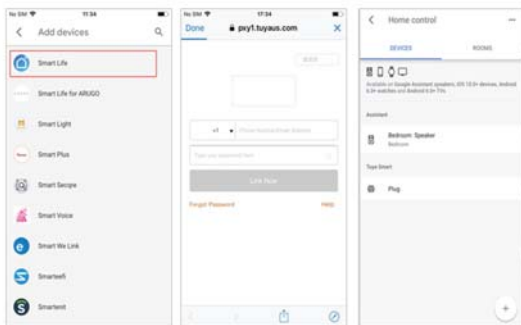
1) On the homepage of Google Home App, click the button in the lower right corner, select "MORE SETTING", select "Home CONTROL" under the list of "ASSISTANT", and then click "+" in the lower right corner.



2) Find "Smart Life" in the list. In the new window, select your Smart Life account's region, type your Smart Life account and password, then tap "Link Now". After you assign rooms for devices, your devices will be listed in the Home Control page.

27

28



- 3) Control your smart devices through Google Home
Now you can control your smart devices through Google Home. Take bedroom light as the example, the supported voice commands are as below:
"Ok Google, turn on bedroom light."
"Ok Google, turn off bedroom light."

29

6. FAQ

6.1 Please note when adding device

- 1) Confirm device is powered on.
- 2) Confirm device is waiting for network configuration.
- 3) Confirm the device, smart phone and router are as close to each other.
- 4) Make sure the network function of router and smart phone are unblocked.
- 5) Confirm the entered router password is correct.
- 6) Confirm adding device is under 2.4GHz Wi-Fi channel.
- 7) Confirm that router's encryption method is WPA2-PSK and authentication type is AES, or both are set up as automatic.
- 8) Confirm that Wi-Fi name contains letters and numbers only.
- 9) If router's connected device reach the amount limit, please try to turn off some devices Wi-Fi function and configure again.
- 10) If router enables MAC address filter, please try removing the device from MAC filter list and make sure router is allowing device to be connected.

6.2 Control device under 2G/3G/4G network?

Device and smart phone must be in the same Wi-Fi environment when adding device. After successfully adding, device can be controlled via mobile network.

6.3 Why can't I control the load after installing the product?

- 1) Please check if the wiring is correct.
- 2) Please check if there is a neutral wire in the wall cassette.(neutral wire is required)
- 3) Please check if the connected load exceeds the maximum value of the device.

30

SMART HOME

Smart Light Switch User Manual

Notes before installation

1. Neutral wire is required.
2. Cut off the power before installation.
3. Wi-Fi only support 2.4GHz network (802.11b/g/n), don't support 5GHz network.
4. Only support one way or single pole circuit, and it's not compatible with 3-way or multi-way circuit.
5. Don't exceed the maximum load, please refer to "Rated Power" under Specification in page 1.
6. Basic or experienced electrical wiring knowledge required, or please consult a professional electrician.
7. On/Off button also can be used as reset button, long press any one On/Off button to reset your switch to factory default setting.

Warning:

This device complies with Part 15 of the FCC Rules. Operation is subject to the following two conditions: (1) this device may not cause harmful interference, and (2) this device must accept any interference received, including interference that may cause undesired operation.

changes or modifications not expressly approved by the party responsible for compliance could void the user's authority to operate the equipment.

NOTE: This equipment has been tested and found to comply with the limits for a Class B digital device, pursuant to Part 15 of the FCC Rules. These limits are designed to provide reasonable protection against harmful interference in a residential installation. This equipment generates, uses and can radiate radio frequency energy and, if not installed and used in accordance with the instructions, may cause harmful interference to radio communications. However, there is no guarantee that interference will not occur in a particular installation. If this equipment does cause harmful interference to radio or television reception, which can be determined by turning the equipment off and on, the user is encouraged to try to correct the interference by one or more of the following measures:

- Reorient or relocate the receiving antenna.
- Increase the separation between the equipment and receiver.
- Connect the equipment into an outlet on a circuit different from that to which the receiver is connected.
- Consult the dealer or an experienced radio/TV technician for help.

NOTE: This device and its antenna(s) must not be co-located or operation in conjunction with any other antenna or transmitter

RF Exposure Statement

To maintain compliance with FCC's RF Exposure guidelines, This equipment should be installed and operated with minimum distance of 20cm the radiator your body. This device and its antenna(s) must not be co-located or operation in conjunction with any other antenna or transmitter