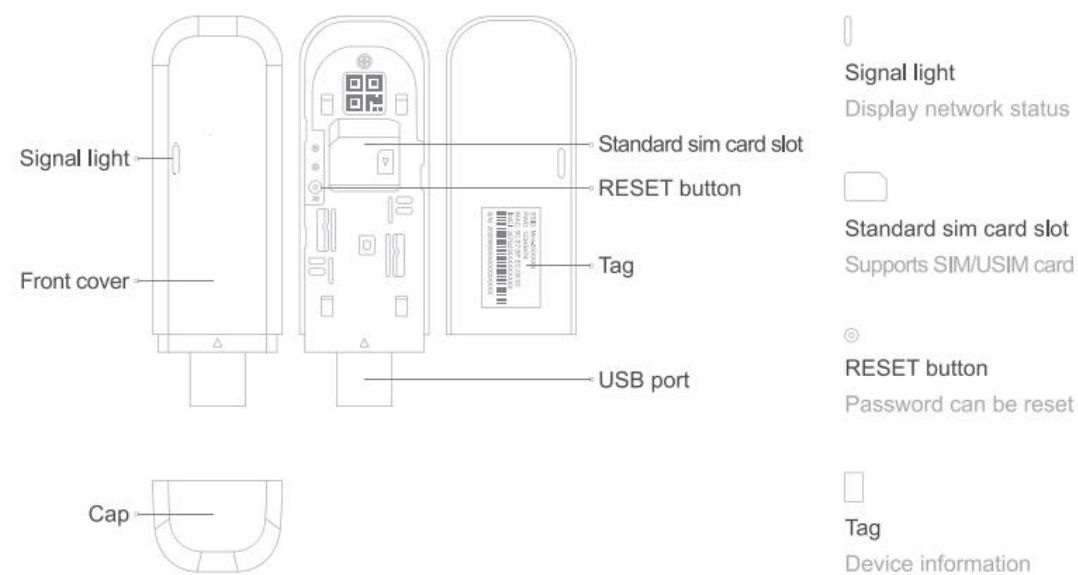





TD-LTE/LTE FDD/WLAN terminal SEL832/Mini11

User Manual

◎ Appearance and function description



◎ Signal light status and Tag information

-  Red light on: Searching network/ Fault
- Green & Blue lights on: Access network successfully.



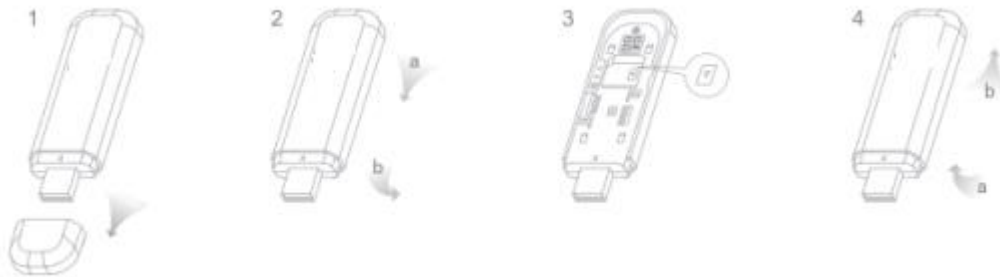
IMEI: 3579230XXXXXXX

SSID: Mini-5XXXXX

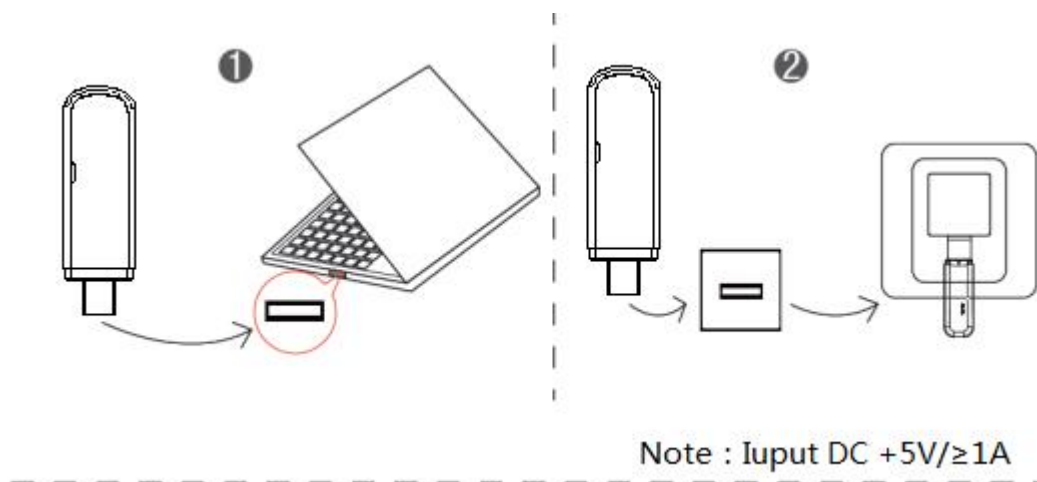
PWD: 12345678

◎ SIM card install

When the device is power off, please follow the picture below to insert the standard SIM card.



◎ Application scenario



© Using instruction

① Plug and play

The device is connected to PC through USB interface. After the driver is automatically and correctly installed, it will be identified as the network card. It can be used directly without through WiFi list.

The automatic driver installation support OS windows 7/8/10.

② Connect through WiFi

When both green and blue lights on, choose the SSID match this device from your WiFi list and enter the correct password to use.

③ WEB UI access

After connecting to WiFi, enter the following URL in the browser: <http://192.168.43.1>.

Then you can change the parameters of WiFi and do APN settings.

© Cautions

Please read the following precautions before using:

1. Input voltage requirements: DC +5V/ ≥ 1 A .
2. Handle with care and keep the product in a clean and dust-free place.
3. Do not drop,throw,bend or disassemble the product.
4. Do not put it in the place with moisture,water or other liquids.
5. Please do not put it in the place with high temperature or flammable gas.
6. Do not use this product in the aircraft and places where WiFi is required to turned off.
7. Do not allow children to use this product without guidance,keep it out of touch of children.
8. Operating ambient temperature: -10 ~ 50° C; humidity: 10 ~ 90%.

© Packing list

TD-LTE/LTE FDD/WLAN terminal	1PCS
User Manual	1PCS

FCC Warning

This equipment has been tested and found to comply with the limits for a Class B digital device, pursuant to part 15 of the FCC Rules. These limits are designed to provide reasonable protection against harmful interference in a residential installation. This equipment generates, uses and can radiate radio frequency energy and, if not installed and used in accordance with the instructions, may cause harmful interference to radio communications. However, there is no guarantee that interference will not occur in a particular installation. If this equipment does cause harmful interference to radio or television reception, which can be determined by turning the equipment off and on, the user is encouraged to try to correct the interference by one or more of the following measures:

- Reorient or relocate the receiving antenna.
- Increase the separation between the equipment and receiver.
- Connect the equipment into an outlet on a circuit different from that to which the receiver is connected.
- Consult the dealer or an experienced radio/TV technician for help.

Caution: Any changes or modifications to this device not explicitly approved by manufacturer could void your authority to operate this equipment.

This device complies with part 15 of the FCC Rules. Operation is subject to the following two conditions: (1) This device may not cause harmful interference, and (2) this device must accept any interference received, including interference that may cause undesired operation.

Specific Absorption Rate (SAR) information:

This TD-LTE/LTE FDD/WLAN terminal meets the government's requirements for exposure to radio waves. The guidelines are based on standards that were developed by independent scientific organizations through periodic and thorough evaluation of scientific studies. The standards include a substantial safety margin designed to assure the safety of all persons regardless of age or health. FCC RF Exposure Information and Statement the SAR limit of USA (FCC) is 1.6 W/kg averaged over one gram of tissue. Device types: TD-LTE/LTE FDD/WLAN terminal has also been tested against this SAR limit. This device was tested for typical body-worn operations with the back of the Tablet pc kept 10mm from the body. To maintain compliance with FCC RF exposure requirements, use accessories that maintain an 0mm separation distance between the user's body and the back of the TD-LTE/LTE FDD/WLAN terminal. The use of belt clips, holsters and similar accessories should not contain metallic components in its assembly. The use of accessories that do not satisfy these requirements may not comply with FCC RF exposure requirements, and should be avoided.